

# RIVER VIEW NATURAL AREA MANAGEMENT PLAN

October 2015



**PORTLAND PARKS & RECREATION**

Healthy Parks, Healthy Portland



**ENVIRONMENTAL SERVICES  
CITY OF PORTLAND**

working for clean rivers

# RIVER VIEW NATURAL AREA MANAGEMENT PLAN

October 2015

Prepared for  
Portland Parks & Recreation and  
Bureau of Environmental Services



**PORTLAND PARKS & RECREATION**  
Healthy Parks, Healthy Portland



ENVIRONMENTAL SERVICES  
CITY OF PORTLAND  
working for clean rivers



## Acknowledgements:

### Project Advisory Committee

Brian Baumann	Chris Sautter
Sarah Bice	Jennifer Seamans
Corrina Chase	Jay Withgott
Michel George	Maurico Villarreal
Marci Krass	Charlie Sponsel
Fran Laird	Michael Karnosh
Steve Manton	Torrey Lindbo

### Portland Parks & Recreation

Amanda Fritz, Commissioner  
 Mike Abbaté, Director

Emily Roth, Senior Planner, Project Manager  
 Maija Spencer, Public Involvement Specialist

Rachel Felice, Natural Area West Supervisor \*  
 Jeff Hough, Trail Program Coordinator \*  
 Kendra Petersen-Morgan, City Nature West Ecologist \*

### Portland Bureau of Environmental Services

Nick Fish, Commissioner  
 Michael Jordan, Director

Shannah Anderson, Land Conservation Specialist \*  
 Melissa Brown, Environmental Specialist \*  
 Mary Bushman, Environmental Specialist \*  
 Paul Ketcham, Willamette Watershed Manager \*

### Metro

Kate Holleran, Natural Resources Scientist \*

### Bureau of Land Management

Zach Jarrett, Lead Outdoor Recreation Planner \*

### ESA Vigil-Agrimis

Paul Agrimis, Principal  
 Steve Roelof, Project Manager  
 Susie Mattke-Robinson, Landscape Planner

### Sage Environmental Services

Sage Jensen, Natural Resource Ecologist

### Zenn Associates

Doug Zenn, Public Involvement Facilitator

### JLA Public Involvement

Kristin Kibler, Public Involvement Facilitator  
 Jessica Pickul, Public Involvement Coordinator

\*Technical Advisory Committee member





*River View Natural Area (Foreground) and Vicinity*

*Photo by Harold Hutchinson  
Cover page photo by ESA*

# TABLE OF CONTENTS

## River View Natural Area Management Plan

### Executive Summary

	<u>Page</u>
<b>I. Introduction and Background</b>	<b>1</b>
A. Purpose of the Plan	1
B. Location and Context	1
C. The Planning Process	2
D. Goals and Guiding Principles	4
<b>II. RVNA Existing Conditions</b>	<b>7</b>
A. General Conditions and Existing Use	7
B. Zoning	8
C. Natural Resources Inventory	8
o Geology	
o Soils	
o Topography	
o Aquatic Resources	
o Vegetation Composition and Trajectory	
o Wildlife	
D. Trails and Public Access	18
<b>III. RVNA Habitat Management</b>	<b>19</b>
A. Desired Future Condition	19
B. Habitat Management Areas	20
o Aquatic Function Area	
o Interior Forest	
C. Ecological Prescriptions	22
D. Water Quality BMPs	26
<b>IV. Plan Guidelines</b>	<b>28</b>
A. Design Criteria	28
B. Opportunities and Constraints	30
<b>V. Access and Nature-Based Recreation</b>	<b>32</b>
A. Compatible Uses	32
B. Trail System	32
o Trail Guidelines and Best Management Practices	
C. Access Improvements	39
o Access Points	
o Half Street Improvements with Parking	
o Overlooks	
o Restroom	
o Stream Crossings	
o Pedestrian Connection to Powers Marine Park	

<b>VI. RVNA Management</b>	<b>45</b>
A. Environmental Protection	45
B. Environmental Interpretation and Education	45
<b>VII. Implementation and Schedule</b>	<b>47</b>
A. Permitting	47
B. Plan Implementation	48
C. Construction Cost Estimate	48
D. Partnership	49
<b>Appendix A</b>	
Figures	
A1. Context	
A2. Corridor Analysis	
A3. Site Base Map	
A4. Zoning	
A5. Soils	
A6. Topography	
A7. Waterways and Wetlands	
A8. Aquatic Network	
A9. Existing Vegetation	
A10. Existing Social Trails	
A11. Transportation and Site Access	
A12. Forest Stand	
A13. Half-Street Improvements	
<b>Appendix B</b>	
1. Ecological Prescriptions	
2. RVNA Desired Future Condition	
3. River View – Potential and observed Amphibians, Reptiles, Mammals, and Birds	
<b>Appendix C</b>	
Construction Cost Estimate	
<b>Appendix D</b>	
1. Public Meeting Announcements and Comment Summaries	
2. PAC Meeting Notes	
3. Stakeholder Interviews	
<b>Appendix E</b>	
Background Technical Information and Reports	

## Executive Summary

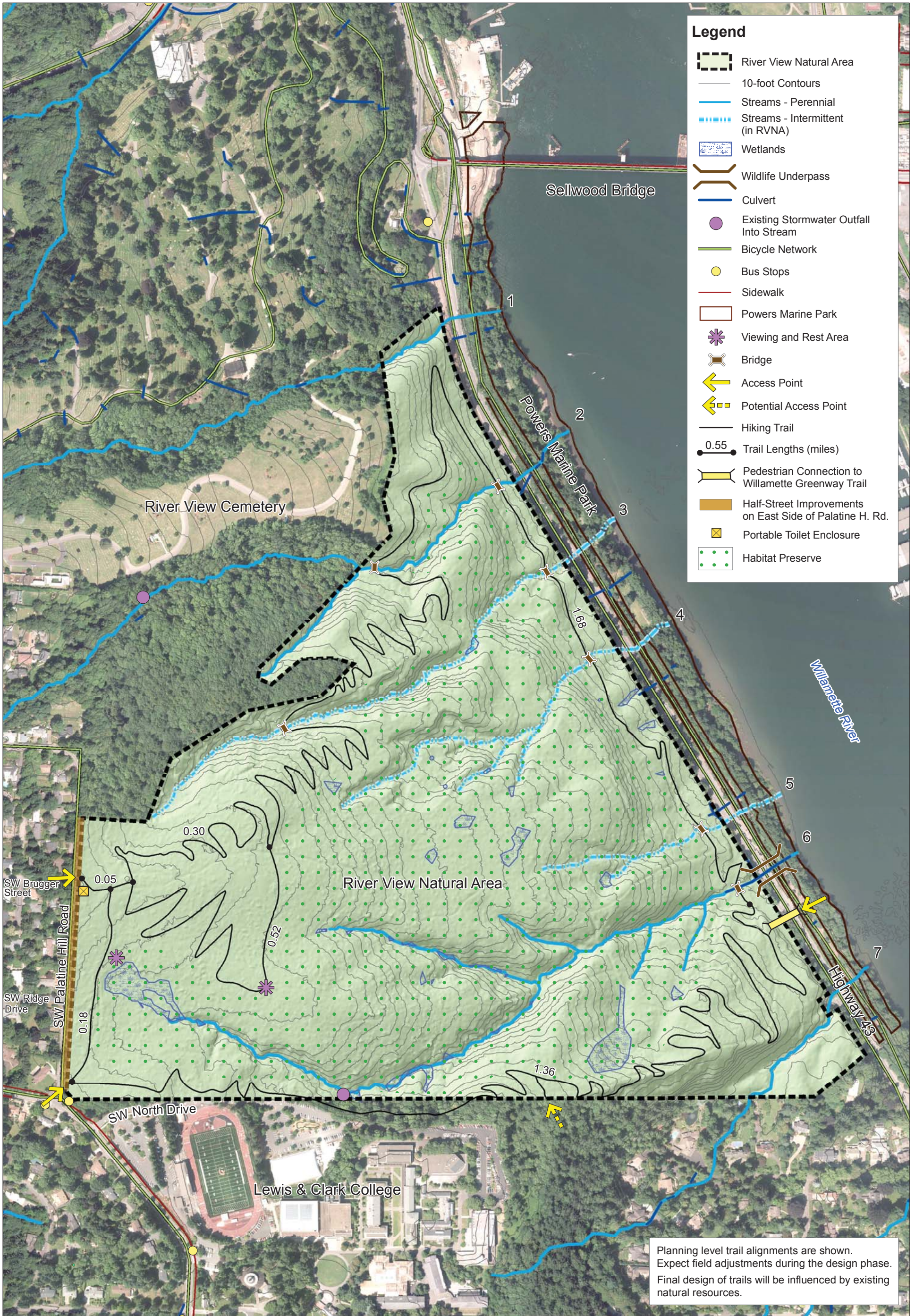
The management plan for River View Natural Area (RVNA) provides a framework for enhancing the ecological functions of the site while facilitating compatible recreational access. The plan documents existing conditions and sets forth considerations, prescriptions, and criteria for restoring the site and creating safe access facilities for nature-based recreation, ecological research, and stewardship.

RVNA is a 146-acre undeveloped forested parcel located in southwest Portland, Oregon, on the west side of the Willamette River. RVNA is positioned within an upland forested corridor known as the Westside Wildlife Corridor that stretches through Portland's West Hills. This is a target area to help protect remaining natural habitat, protect headwater streams, and create a continuous wildlife migration corridor in the West Hills. RVNA contains important natural resources that provide key functions for local and regional ecosystem health. The streams, wetlands, and intact forest within the largely undeveloped natural area make RVNA an important site for protection and enhancement.

Several agencies worked together to identify and acquire the RVNA property for the protection of its natural resources in 2011, including Portland Parks & Recreation (PP&R), the City of Portland Bureau of Environmental Services (BES), The Trust for Public Land (TPL), and Metro. The planning process for River View Natural Area was guided by Portland Parks & Recreation (PP&R), who worked with a consultant team, a technical advisory committee (TAC), and a project advisory committee (PAC) to develop the management plan.

Members of the project team and TAC developed the Ecological Prescriptions for RVNA, which identify actions to improve the ecological health of a natural area, inform policy changes, and guide monitoring efforts. Design criteria and opportunities and constraints were also developed to provide a decision-making framework for the management plan.

The proposed access and management concept for RVNA contains a system of trails that creates two loops and connects to key access points. The design and construction of the trail system will be guided by a set of best management practices (BMPs) to create trails that are sustainable from both a maintenance perspective and an environmental perspective. The planning team also developed a concept plan for half-street improvements along the eastern side of SW Palatine Hill Road for public parking. The primary management objectives for the trail system are protecting natural resources, water quality, and creating a safe place for visitors. Management recommendations include a no-dogs policy and seasonal trail closures to maintain water quality and protect wildlife during sensitive periods of their life cycle. Safe and sustainable access to RVNA will provide nature-based recreation opportunities and will help support stewardship, community connections, and environmental education opportunities.



Planning level trail alignments are shown. Expect field adjustments during the design phase. Final design of trails will be influenced by existing natural resources.



SOURCE: City parks, streams, culverts, contours, sidewalks, bike network, digital elevation model, and aerial photography data by City of Portland, accessed 09/2013. Bus stop data by Metro, accessed 09/2013. Wetlands delineated by WHPacific (2010) and determined by ESA Vigil-Agrimis (2013). Additional spring field verification will be required for wetlands determined in 2013.

## River View Natural Area Access and Management Concept