

SLABTOWN - BLOCKS 294E/295E

Design Advice Request Hearing / March 19, 2015

APPENDIX A: SITE CONTEXT PHOTOS

Site Aerial Images
Site Photos
Context Photos
Precedent Images



Looking southeast towards downtown

SITE PHOTOS



Looking west towards Forest Park.

SITE PHOTOS



Looking northeast towards the Willamette River and East Portland.

SITE PHOTOS



Existing condition at Block 294W (LJC II).



Existing condition at Block 293 (Adtech).

SLABTOWN SITE PHOTOS



Existing condition at Block 295W (LJC I).



Existing condition at EC building along NW Thurman (property directly north of block 294).

SLABTOWN SITE PHOTOS



Future condition at Block 296E (LL Hawkins). View is from NW 21st.



Future condition at Block 296E (LL Hawkins). View is from corner of NW 21st and NW Raleigh.

SLABTOWN SITE PHOTOS - BLOCK 296E



Future condition at Block 296W (New Seasons). View is from NW Raleigh and NW 22nd.



Future condition at Block 296W (New Seasons). View is from NW Raleigh and pedestrian accessway.

SLABTOWN SITE PHOTOS - BLOCK 296W



Future condition at Block 295W (Existing LJC I). View is from NW Raleigh and pedestrian accessway looking NW.

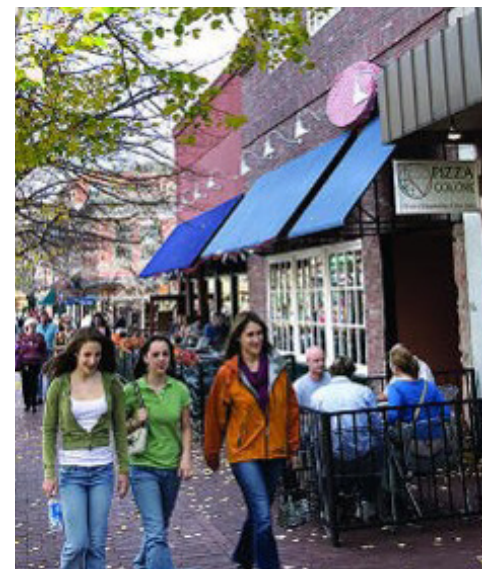


Existing condition at Block 295W (Existing LJC I). View is from NW Raleigh and pedestrian accessway looking NW.

SLABTOWN SITE PHOTOS - BLOCK 295W (PENDING APPLICATION)



CONTEXT PHOTOS



PRECEDENT IMAGES - SLABTOWN



PRECEDENT IMAGES - BLOCK 294E



PRECEDENT IMAGES - BLOCK 295E



PRECEDENT IMAGES - BLOCK 295W (PENDING APPLICATION)