

2035 TSP Response to PSC Questions

Planning and Sustainability Commission Work Session

March 10, 2015

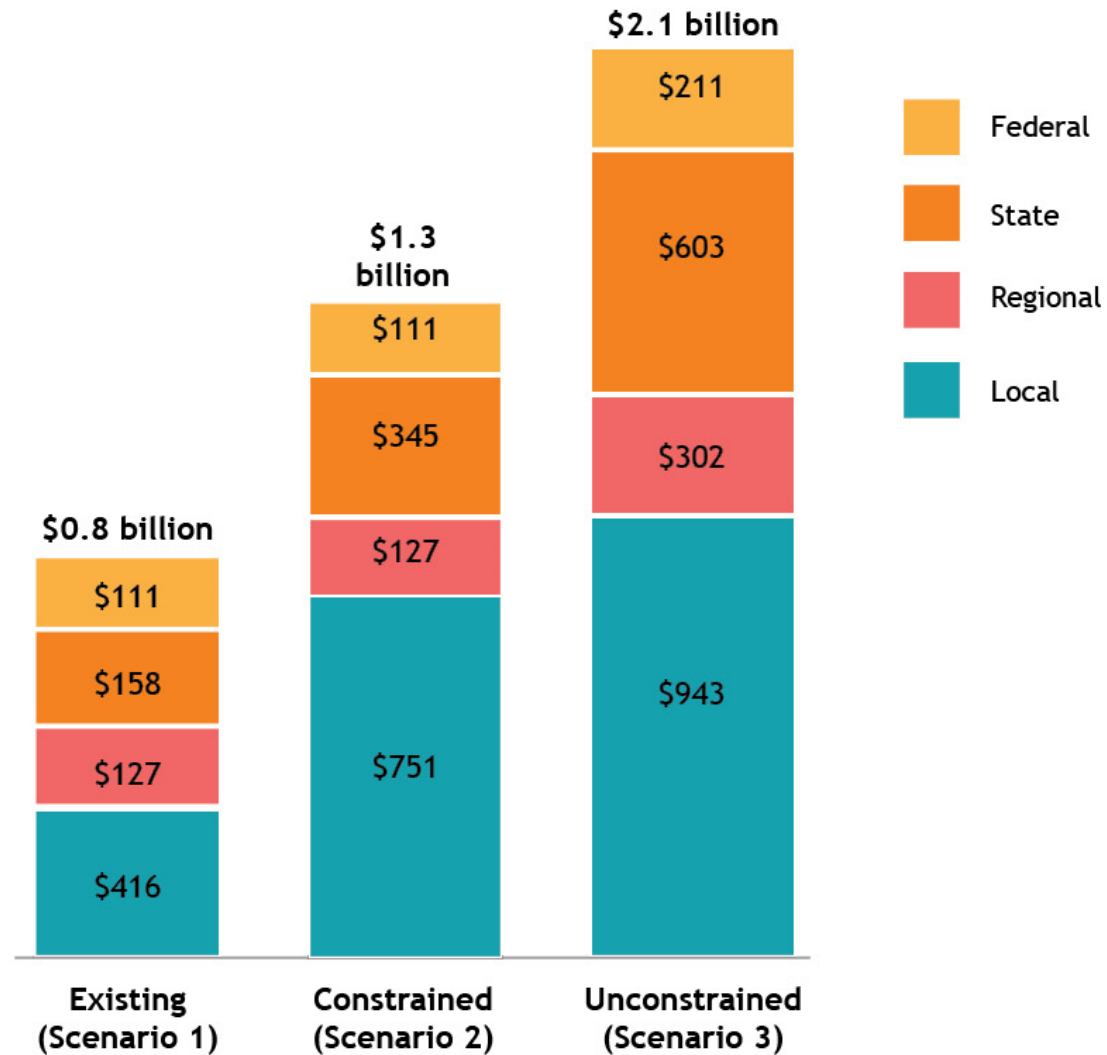
WE KEEP PORTLAND *MOVING*.



What We'll Cover

1. Context
2. Citywide Programs & Major Projects
 - Programs reference list
 - Project phasing, segmenting, and re-scoping
3. Analysis: Major Projects Performance Report
 - Maps and evaluation scores
4. Service Enhancement Plans
5. High Quality Transit
 - Letter of Intent
6. Coordination with BES
7. Next Steps

Revenue Scenarios (Capital, City-Led)



Citywide Program Reference List Examples

Bicycle Network Completion Program

- Location: SW 21st from Taylors Ferry to Spring Garden
- Description: Enhanced Shared Roadway Bicycle Facility
- Estimated Cost: \$7,000

Neighborhood Greenways Program

- Location: SE Center from 42nd to 80th
- Description: Retrofit Existing Neighborhood Greenway
- Estimated Cost: \$10,500

Pedestrian Network Completion

- Location: SE Foster Rd at 82nd Ave
- Description: Safety improvements to signalized intersection
- Estimated Cost: \$150,000

High Crash Corridor

- Location: NE 31st & Sandy Blvd
- Description: Add rapid flash beacon
- Estimated Cost: \$75,000



How a Small Project Gets On a Reference List

Modal Plan

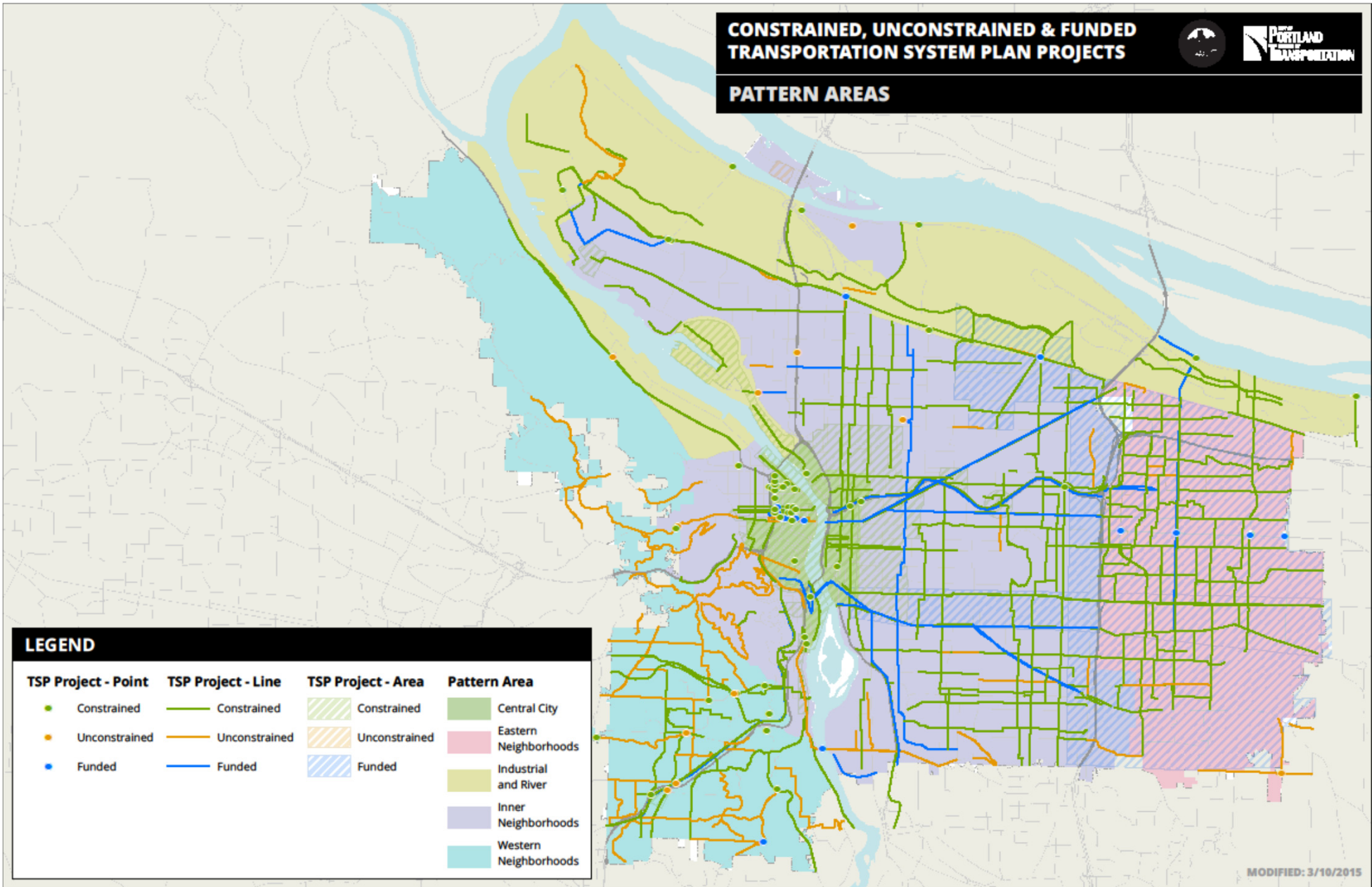
Area Plan

Program Manager

**CONSTRAINED, UNCONSTRAINED & FUNDED
TRANSPORTATION SYSTEM PLAN PROJECTS**



PATTERN AREAS



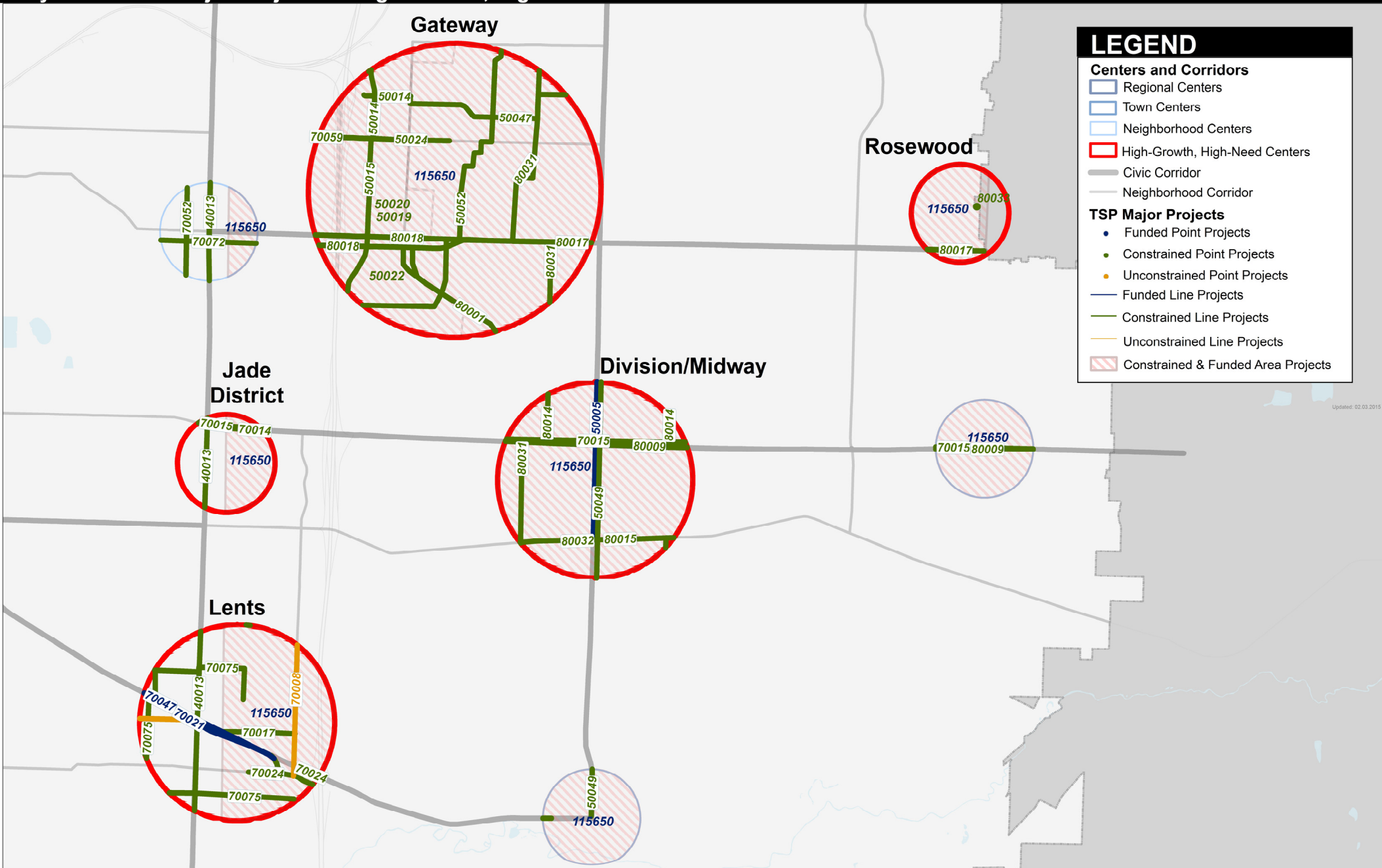
LEGEND

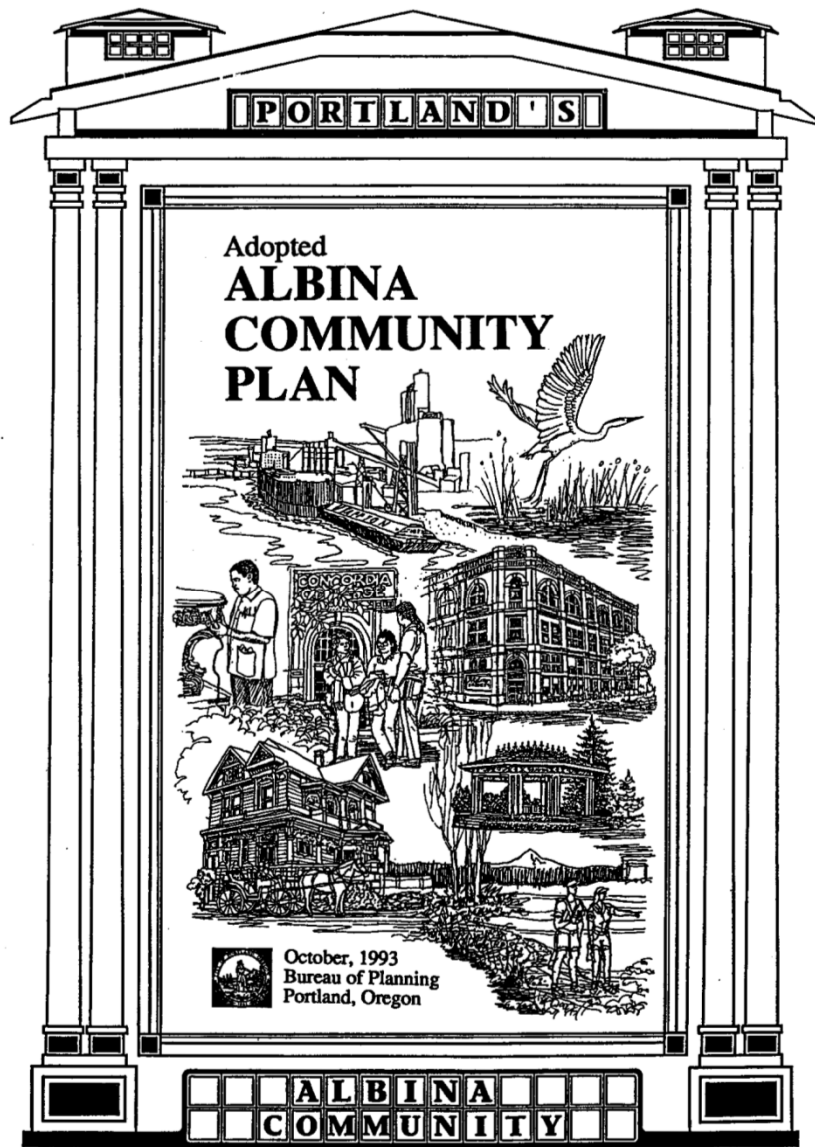
TSP Project - Point	TSP Project - Line	TSP Project - Area	Pattern Area
● Constrained	— Constrained	▨ Constrained	Central City
● Unconstrained	— Unconstrained	▨ Unconstrained	Eastern Neighborhoods
● Funded	— Funded	▨ Funded	Industrial and River
			Inner Neighborhoods
			Western Neighborhoods

MODIFIED: 3/10/2015

TRANSPORTATION SYSTEM PLAN

City of Portland Major Projects in High-Growth, High-Need Centers





Completed

- Denver Ave Streetscape
- Alberta Streetscape
- Killingsworth Frequent Bus
- Fremont/MLK Intersection

Funded

- Killingsworth Streetscape
- Twenties Bikeway
- Columbia/MLK Intersection Improvements

Constrained

- Mason Neighborhood Greenway
- MLK, Jr Blvd Transit Improvements
- Swan Island Active Transportation

Analysis: Major Projects Performance Report

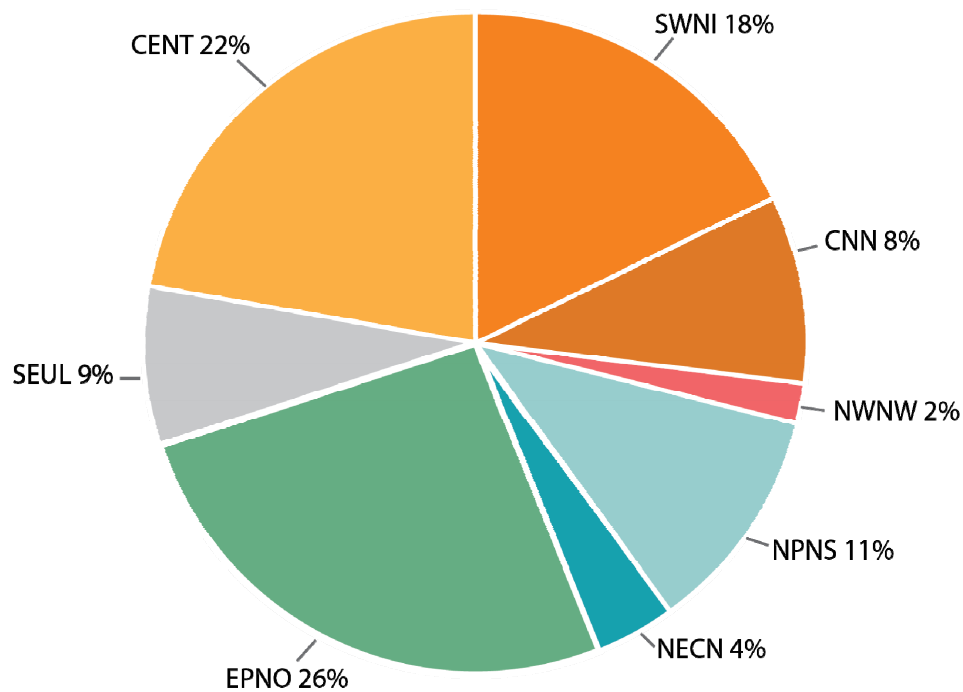
Project Maps by Criterion

Project Scores

Evaluation Criteria

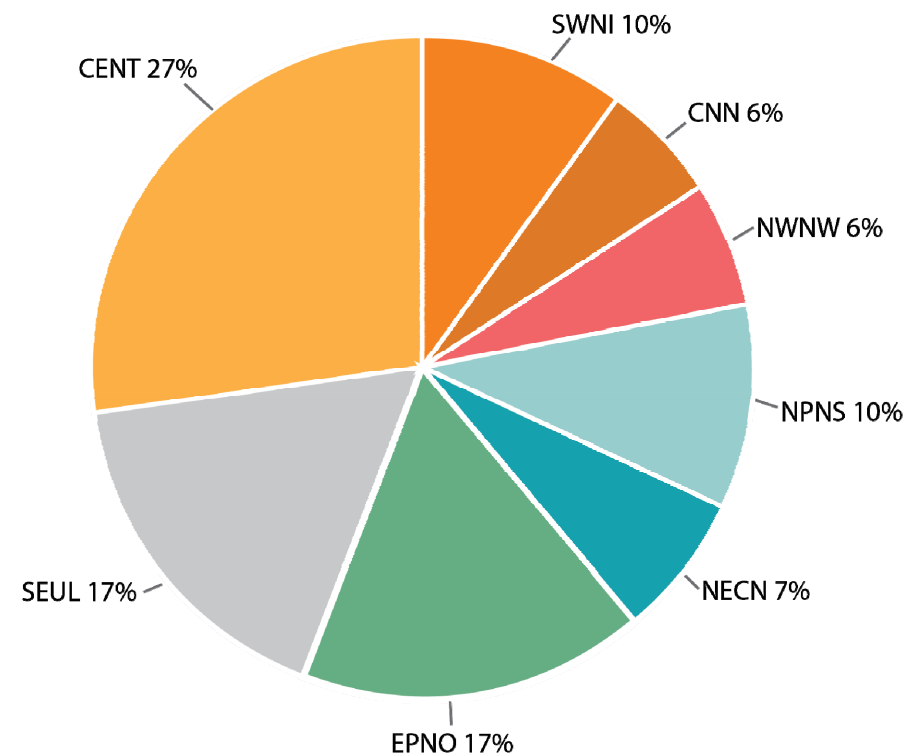
Geographic Constrained Spending & 2035 Growth

Share of Constrained Spending*
(~ \$1 Billion) Allocated by Geography



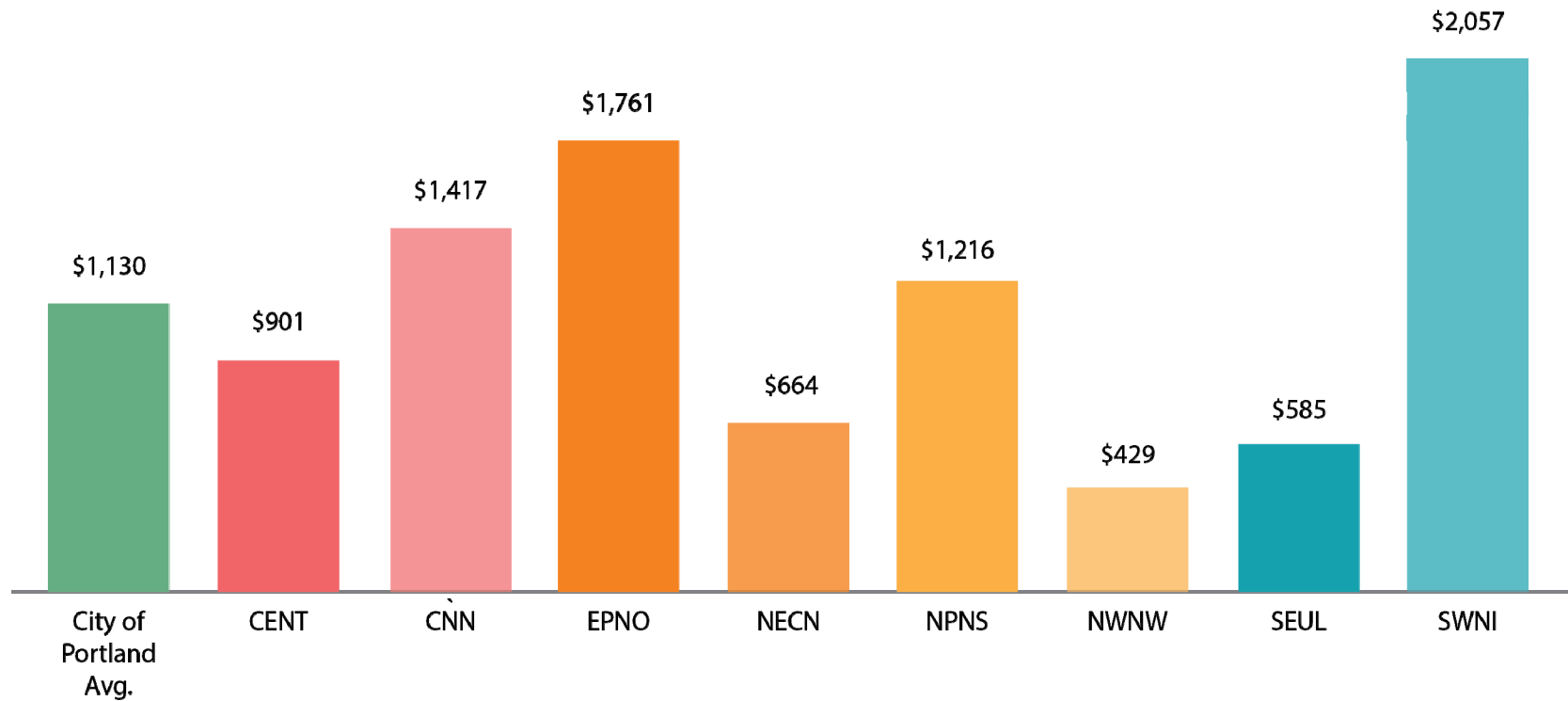
* Not including Citywide Programs

Share of Projected 2035 Households
& Jobs by Geography



Geographic Constrained Spending Per User

Constrained Spending* Allocation Per User
(Projected 2035 Households + Jobs)
by Geography



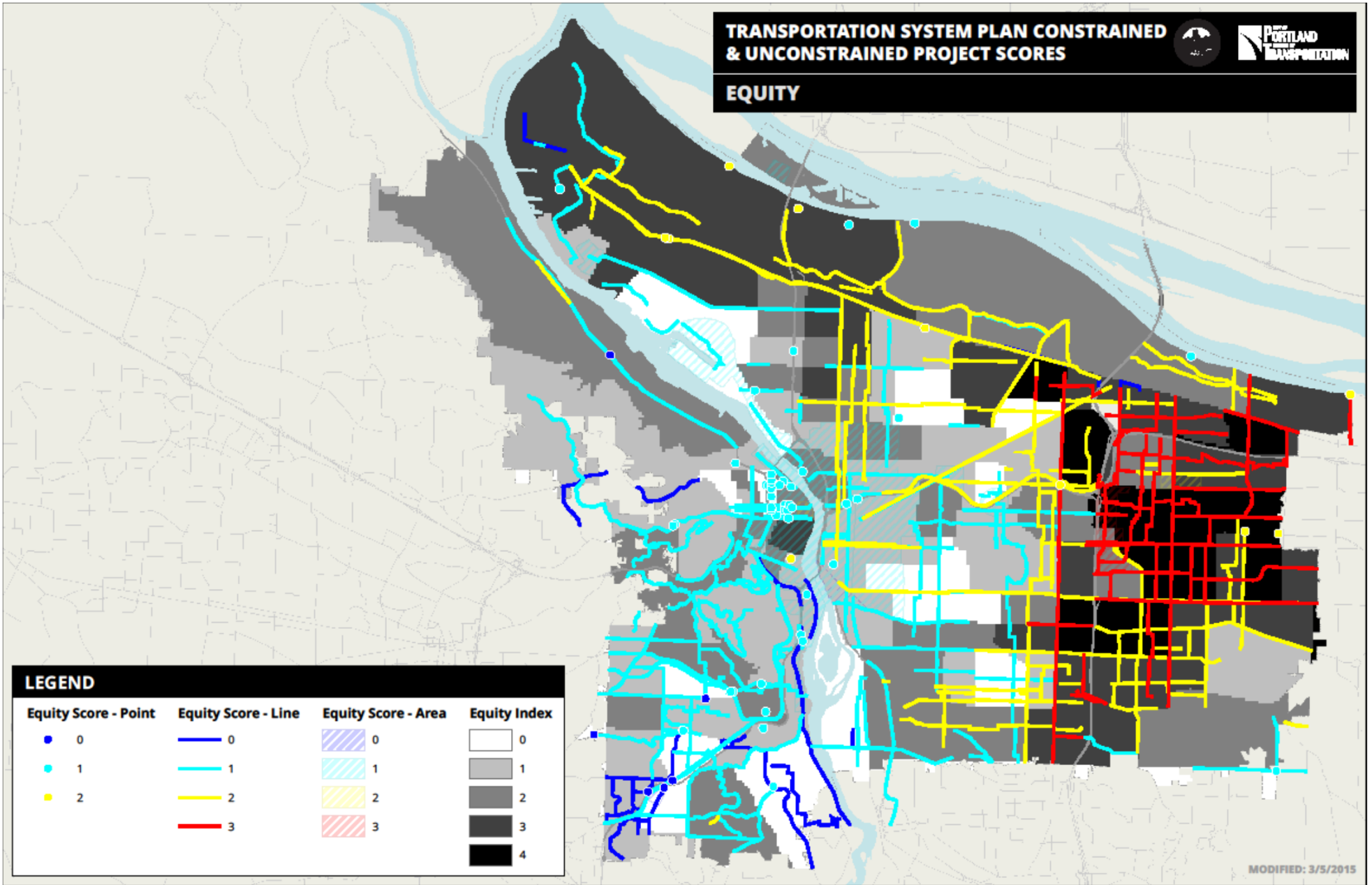
* Not including Citywide Programs

Project Score Maps

TRANSPORTATION SYSTEM PLAN CONSTRAINED & UNCONSTRAINED PROJECT SCORES



EQUITY



LEGEND

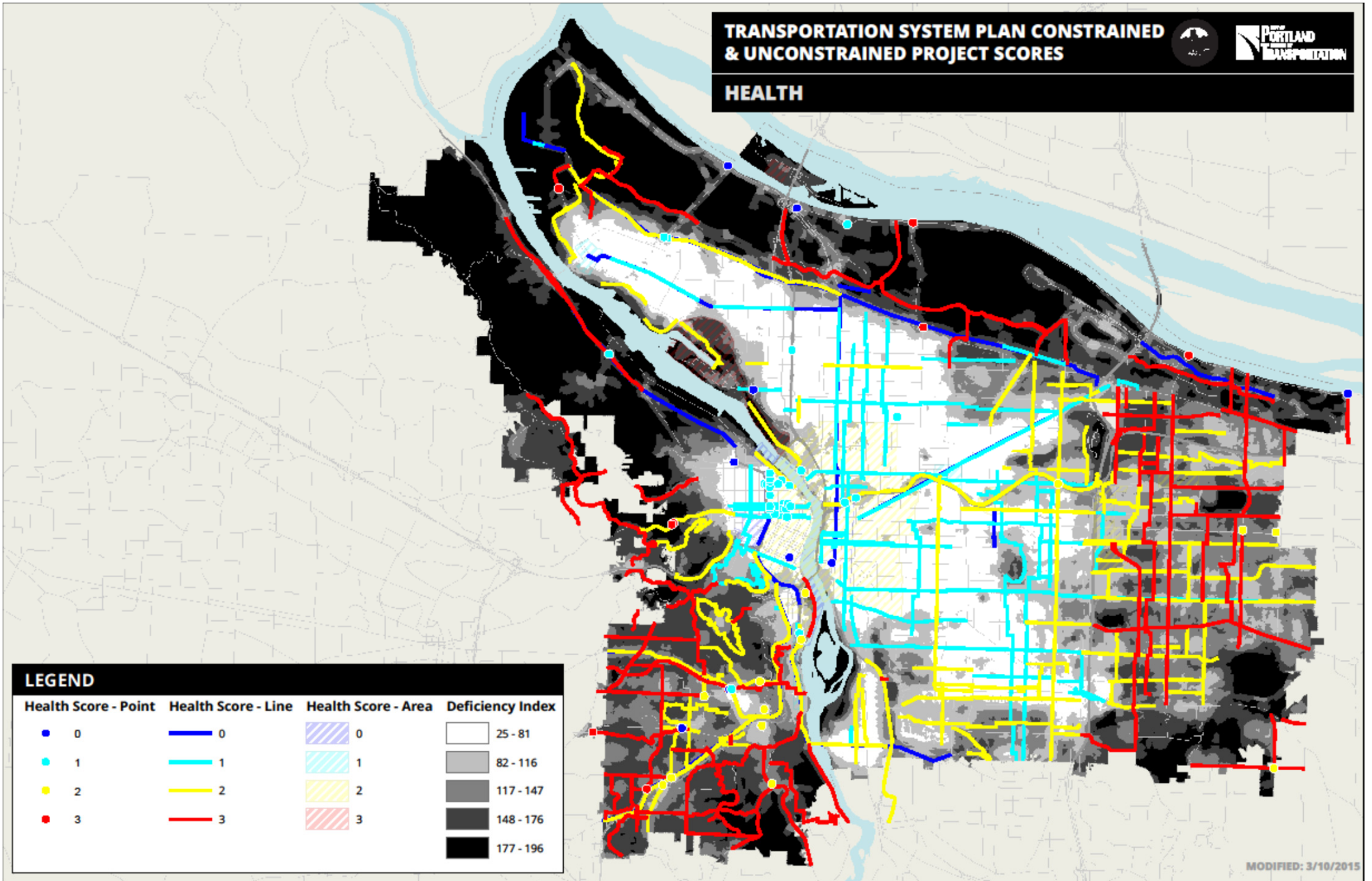
Equity Score - Point	Equity Score - Line	Equity Score - Area	Equity Index
0 (Blue dot)	0 (Blue line)	0 (Blue hatched area)	0 (White square)
1 (Cyan dot)	1 (Cyan line)	1 (Cyan hatched area)	1 (Light gray square)
2 (Yellow dot)	2 (Yellow line)	2 (Yellow hatched area)	2 (Medium gray square)
3 (Red dot)	3 (Red line)	3 (Red hatched area)	3 (Dark gray square)
			4 (Black square)

MODIFIED: 3/5/2015

**TRANSPORTATION SYSTEM PLAN CONSTRAINED
& UNCONSTRAINED PROJECT SCORES**



HEALTH

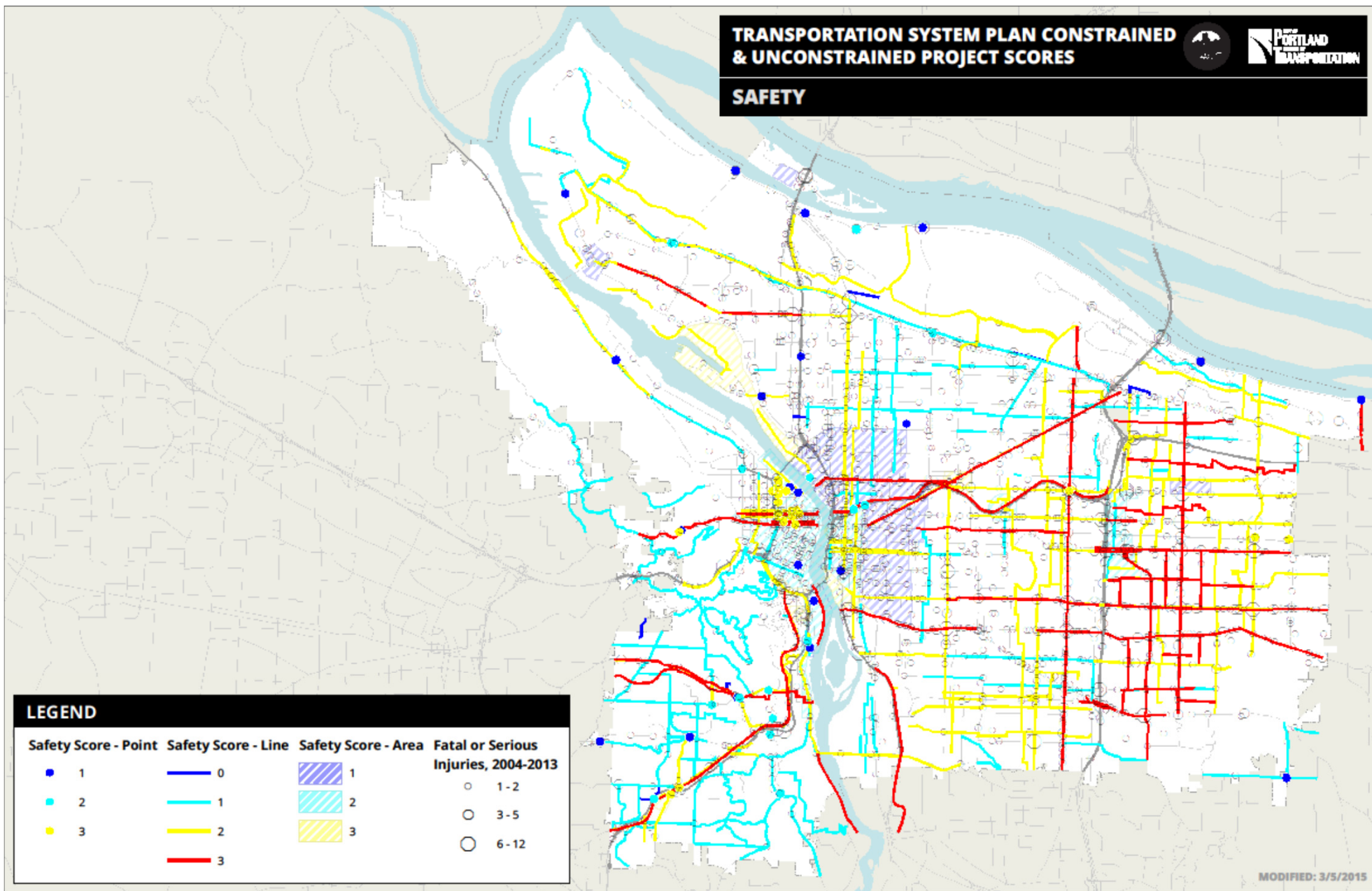


MODIFIED: 3/10/2015

**TRANSPORTATION SYSTEM PLAN CONSTRAINED
& UNCONSTRAINED PROJECT SCORES**



SAFETY



LEGEND

Safety Score - Point	Safety Score - Line	Safety Score - Area	Fatal or Serious Injuries, 2004-2013
■ 1	— 0	▨ 1	○ 1-2
● 2	— 1	▨ 2	○ 3-5
● 3	— 2	▨ 3	○ 6-12
	— 3		

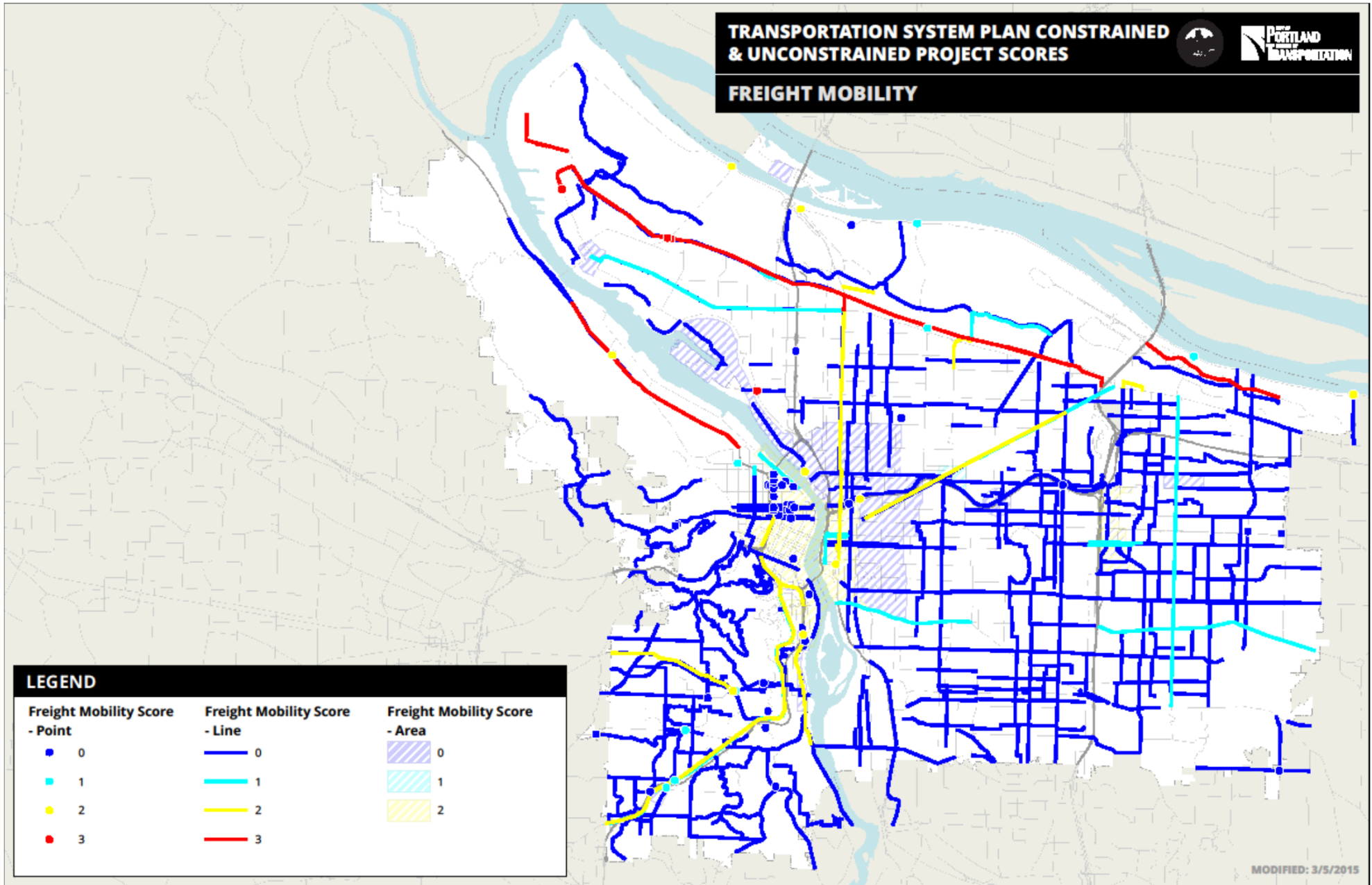
MODIFIED: 3/5/2015

TRANSPORTATION SYSTEM PLAN CONSTRAINED & UNCONSTRAINED PROJECT SCORES



PORTLAND
TRANSPORTATION

FREIGHT MOBILITY



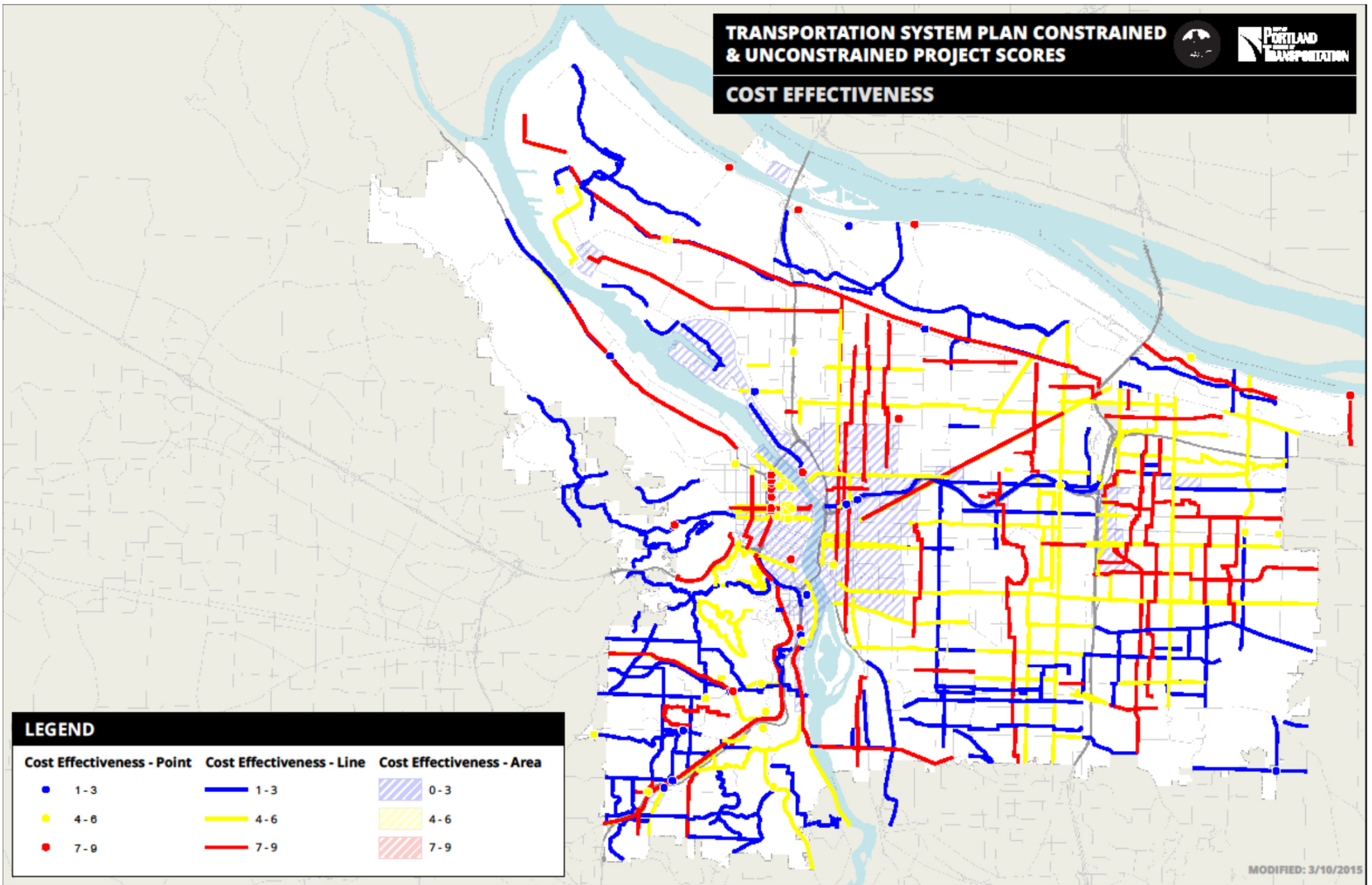
MODIFIED: 3/5/2015

**TRANSPORTATION SYSTEM PLAN CONSTRAINED
& UNCONSTRAINED PROJECT SCORES**



**PORTLAND
TRANSPORTATION**

COST EFFECTIVENESS

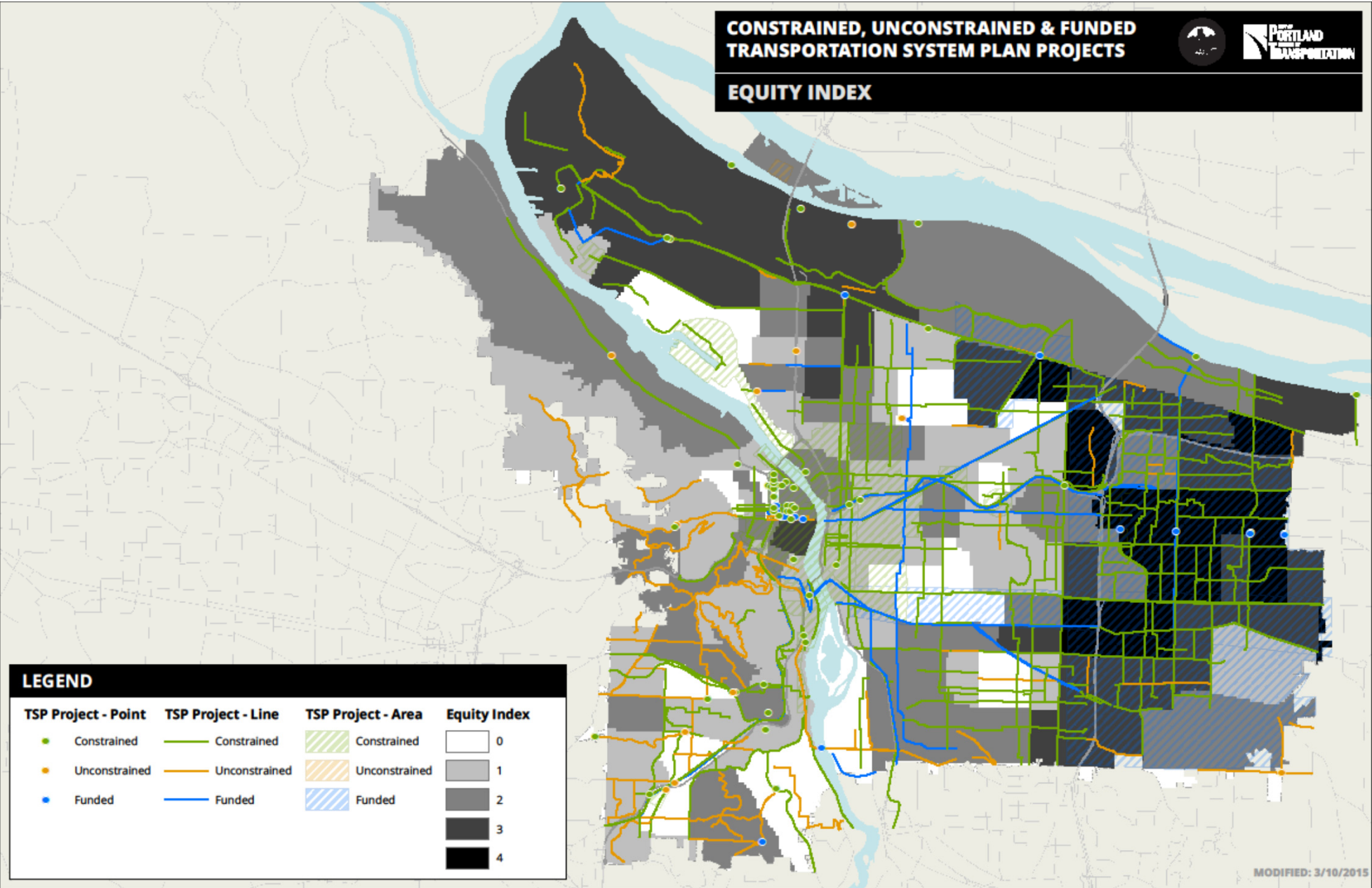


Project Tier Maps Overlaid with Characteristics

**CONSTRAINED, UNCONSTRAINED & FUNDED
TRANSPORTATION SYSTEM PLAN PROJECTS**



EQUITY INDEX



LEGEND

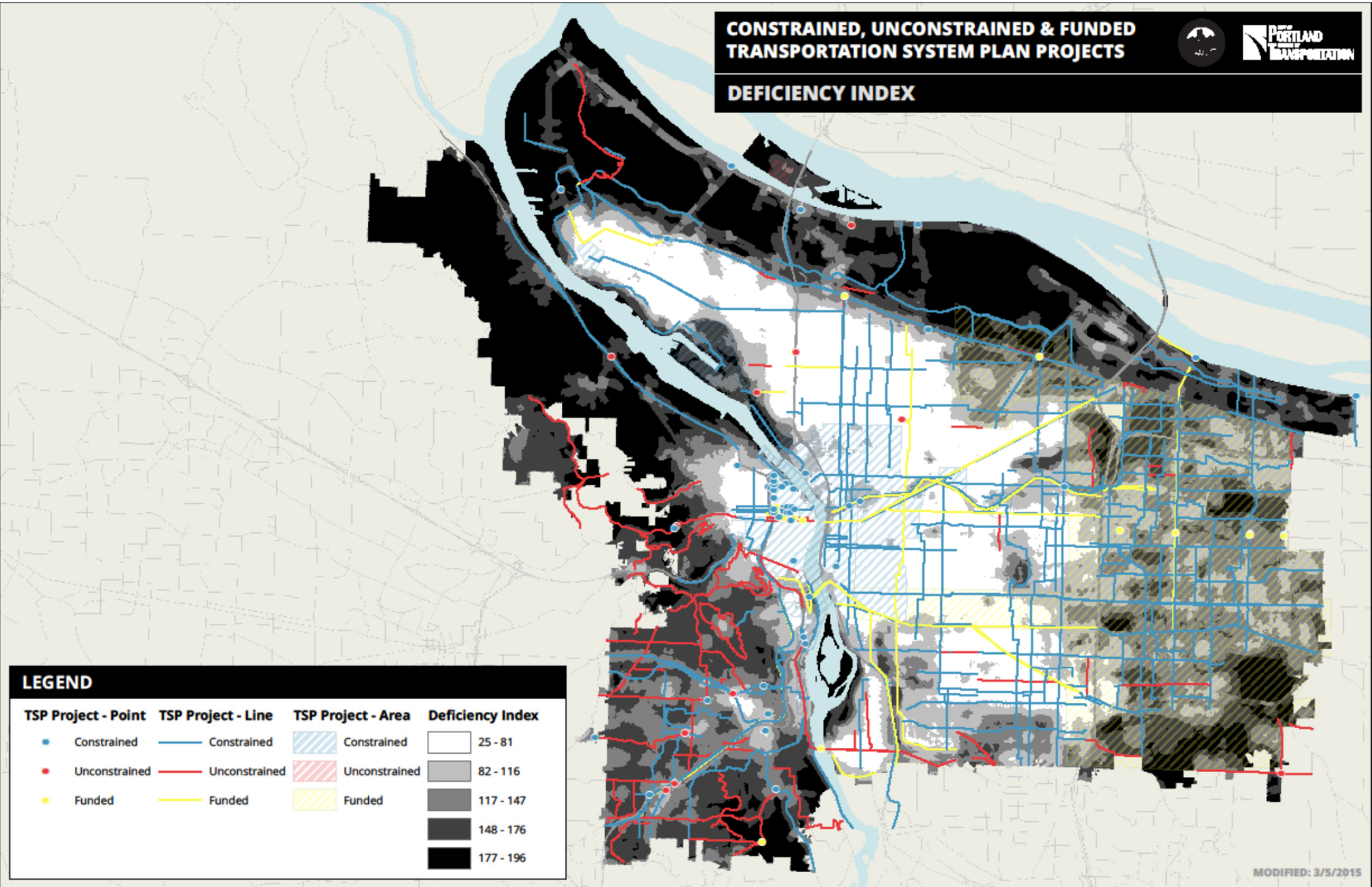
TSP Project - Point	TSP Project - Line	TSP Project - Area	Equity Index
● Constrained	— Constrained	▨ Constrained	□ 0
● Unconstrained	— Unconstrained	▨ Unconstrained	■ 1
● Funded	— Funded	▨ Funded	■ 2
			■ 3
			■ 4

MODIFIED: 3/10/2015

**CONSTRAINED, UNCONSTRAINED & FUNDED
TRANSPORTATION SYSTEM PLAN PROJECTS**



DEFICIENCY INDEX



LEGEND

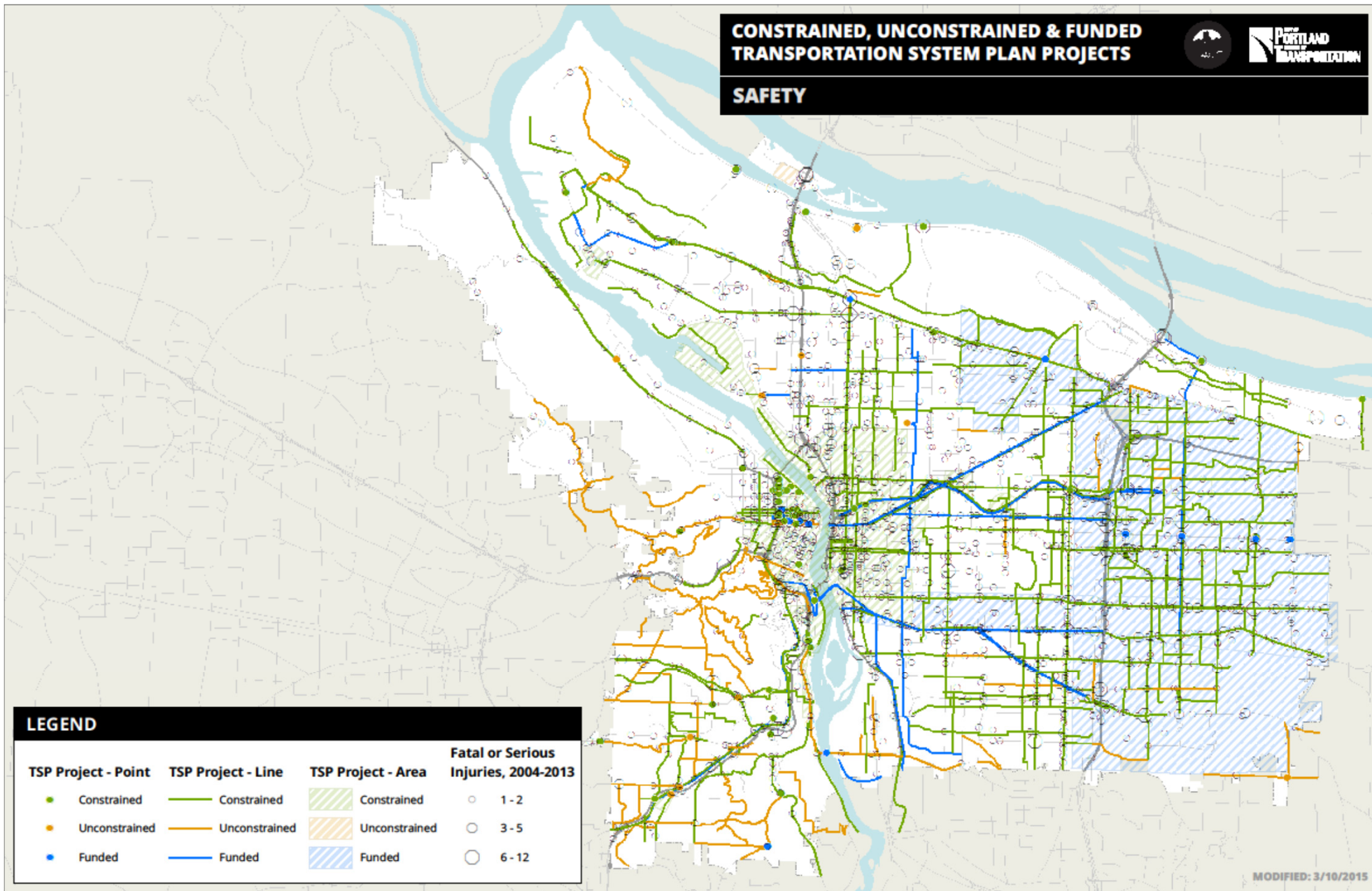
TSP Project - Point	TSP Project - Line	TSP Project - Area	Deficiency Index
● Constrained	— Constrained	▨ Constrained	25 - 81
● Unconstrained	— Unconstrained	▨ Unconstrained	82 - 116
● Funded	— Funded	▨ Funded	117 - 147
			148 - 176
			177 - 196

MODIFIED: 3/5/2015

**CONSTRAINED, UNCONSTRAINED & FUNDED
TRANSPORTATION SYSTEM PLAN PROJECTS**



SAFETY

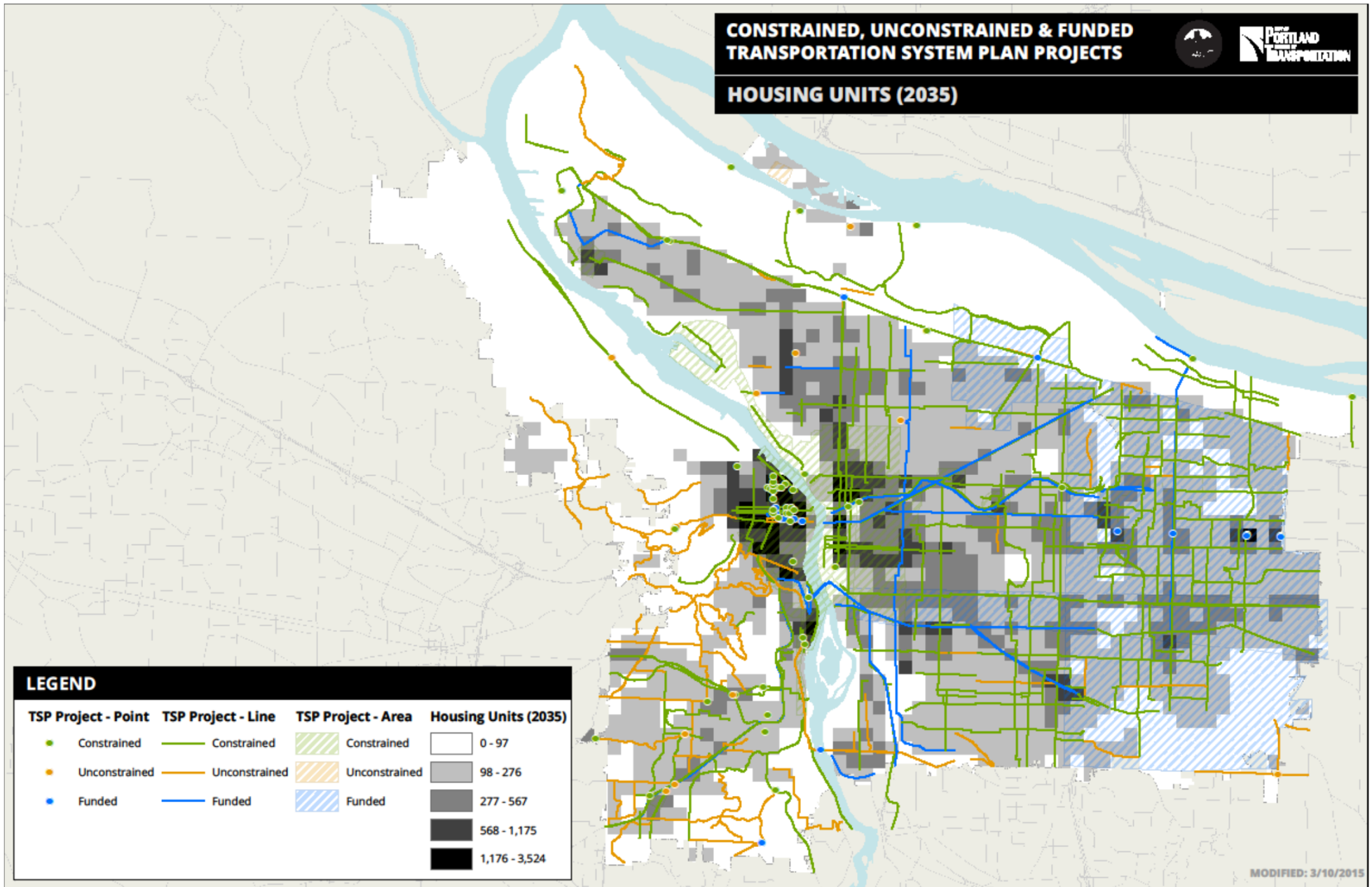


MODIFIED: 3/10/2015

**CONSTRAINED, UNCONSTRAINED & FUNDED
TRANSPORTATION SYSTEM PLAN PROJECTS**



HOUSING UNITS (2035)

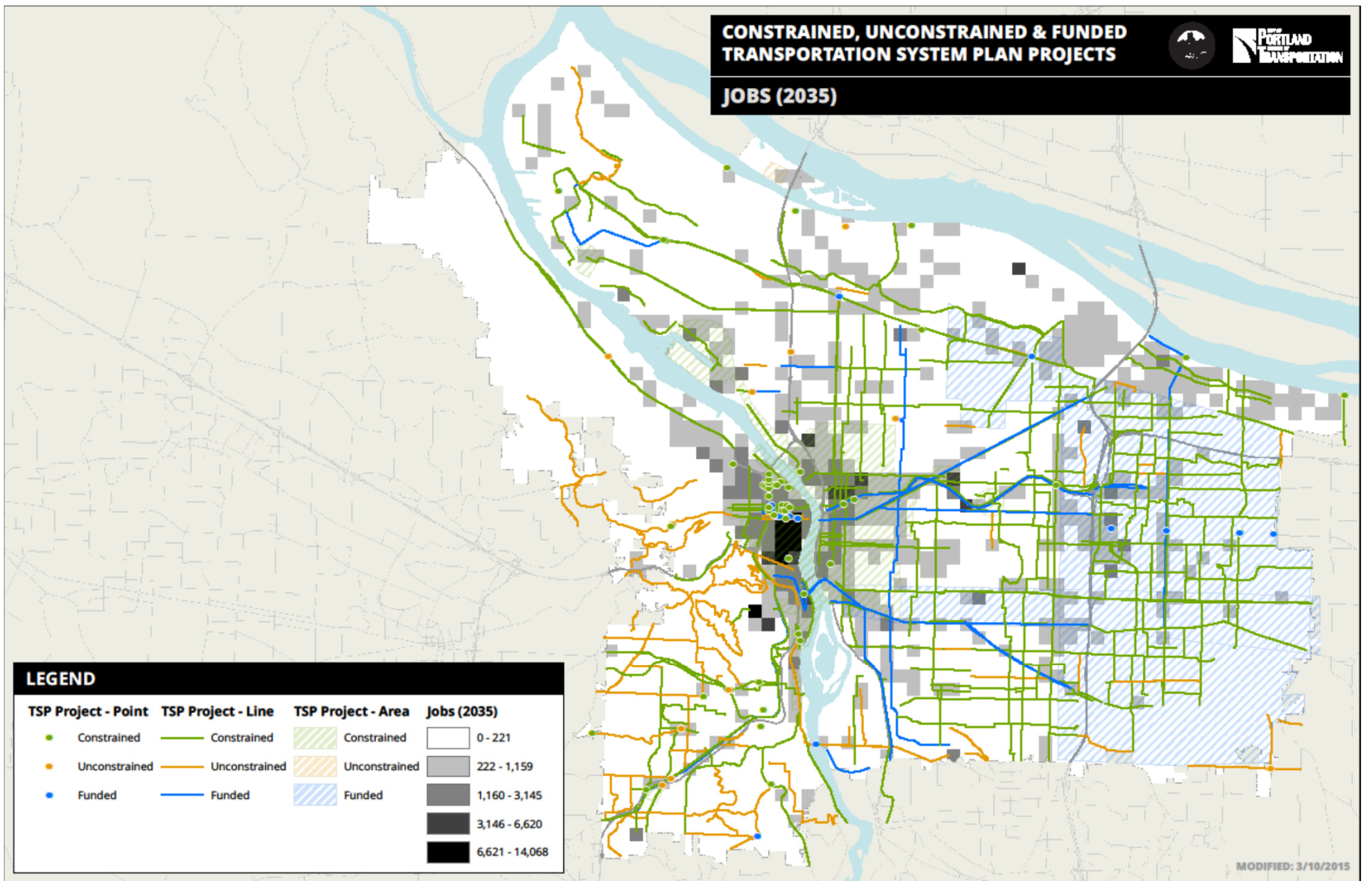


MODIFIED: 3/10/2015

**CONSTRAINED, UNCONSTRAINED & FUNDED
TRANSPORTATION SYSTEM PLAN PROJECTS**



JOBS (2035)



LEGEND

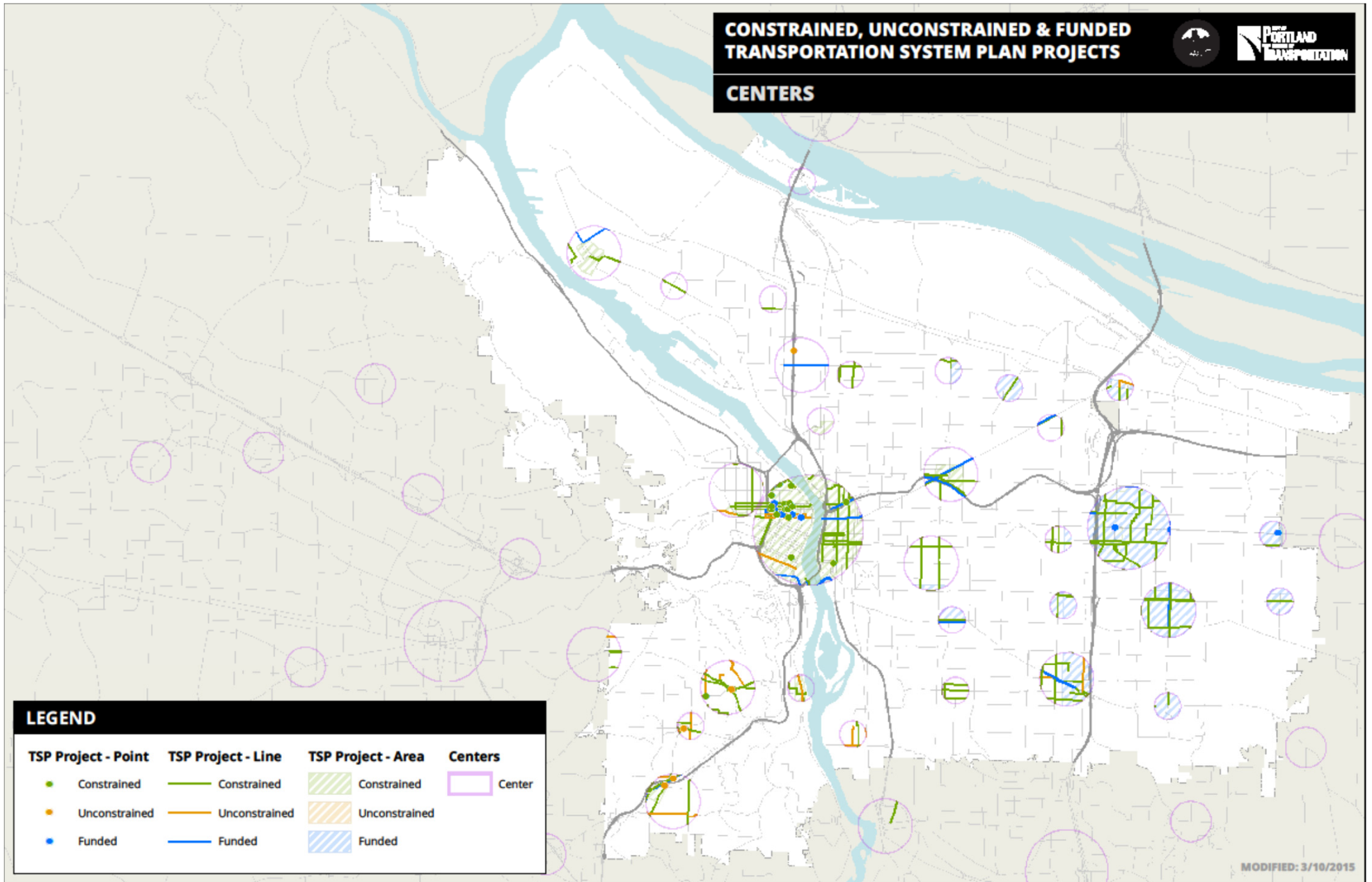
TSP Project - Point	TSP Project - Line	TSP Project - Area	Jobs (2035)
● Constrained	— Constrained	▨ Constrained	□ 0 - 221
● Unconstrained	— Unconstrained	▨ Unconstrained	▒ 222 - 1,159
● Funded	— Funded	▨ Funded	▓ 1,160 - 3,145
			■ 3,146 - 6,620
			■ 6,621 - 14,068

MODIFIED: 3/10/2015

**CONSTRAINED, UNCONSTRAINED & FUNDED
TRANSPORTATION SYSTEM PLAN PROJECTS**



CENTERS



LEGEND

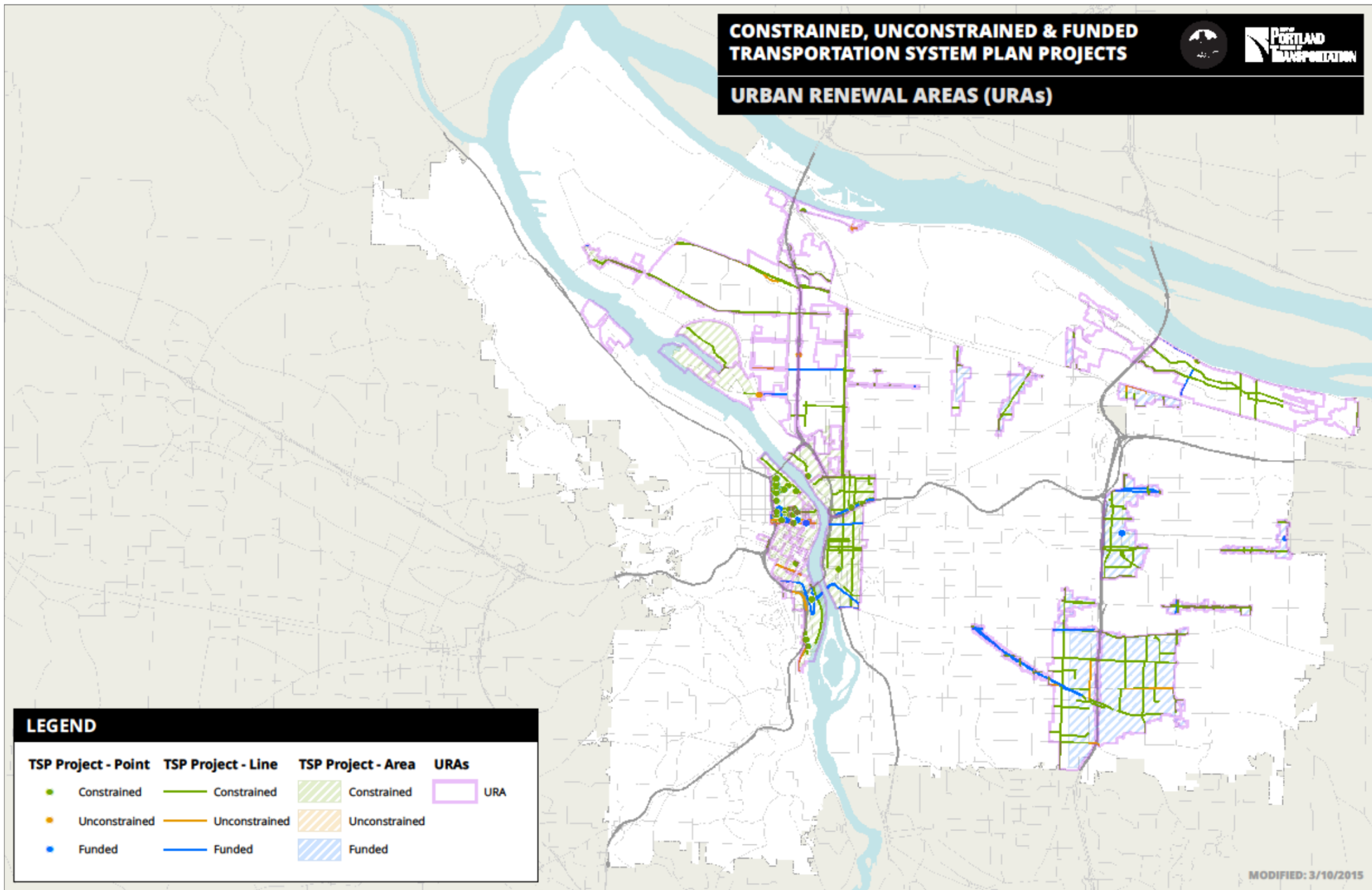
TSP Project - Point	TSP Project - Line	TSP Project - Area	Centers
● Constrained	— Constrained	▨ Constrained	○ Center
● Unconstrained	— Unconstrained	▨ Unconstrained	
● Funded	— Funded	▨ Funded	

MODIFIED: 3/10/2015

**CONSTRAINED, UNCONSTRAINED & FUNDED
TRANSPORTATION SYSTEM PLAN PROJECTS**



URBAN RENEWAL AREAS (URAs)



LEGEND

TSP Project - Point	TSP Project - Line	TSP Project - Area	URAs
● Constrained	— Constrained	▨ Constrained	□ URA
● Unconstrained	— Unconstrained	▨ Unconstrained	
● Funded	— Funded	▨ Funded	

MODIFIED: 3/10/2015