



Request for Cobblestone Re-use

December 15, 2014

Historic Landmarks Commission

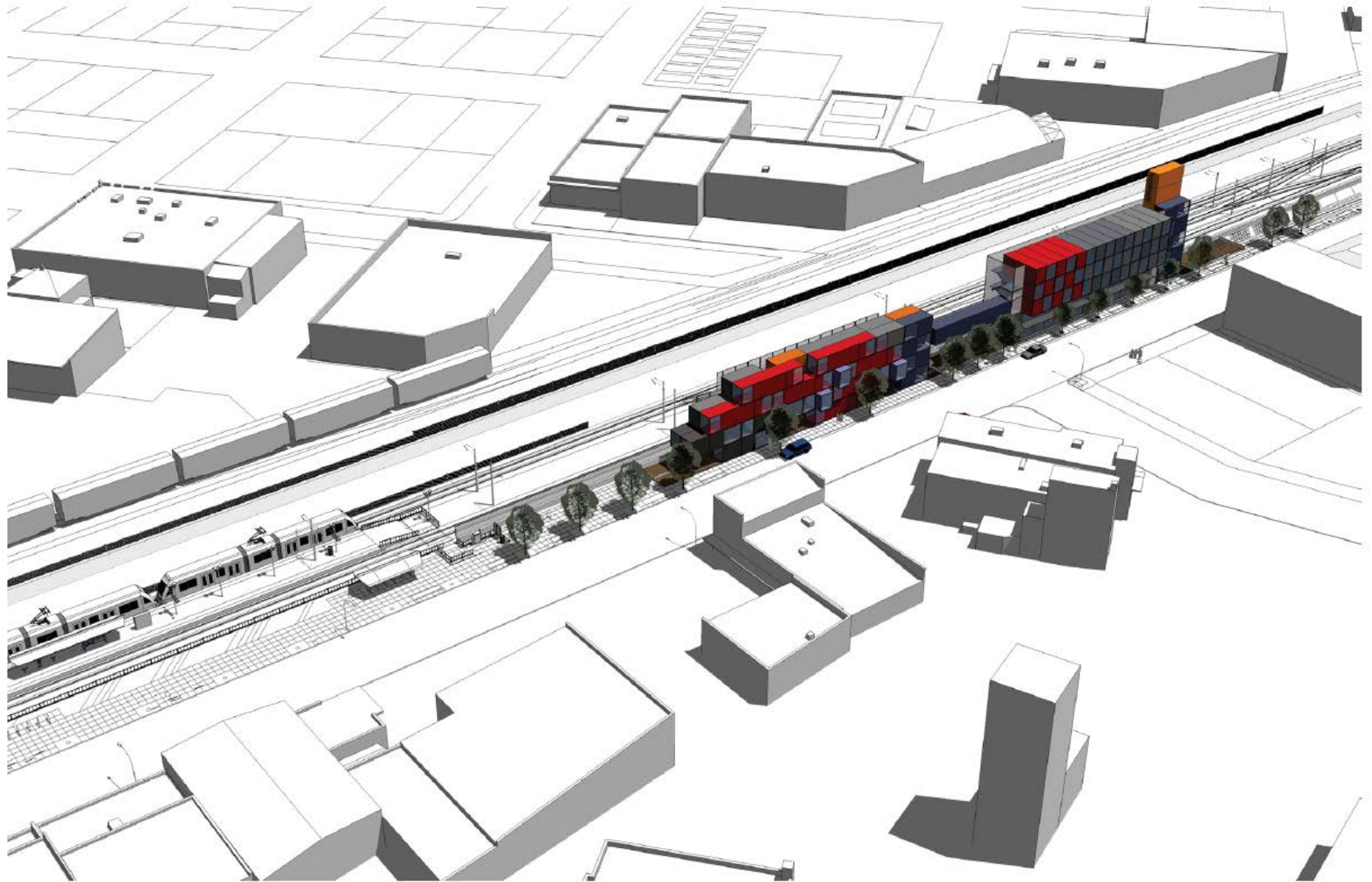
Joe Recker, TriMet Capital Projects

Cobblestone Request

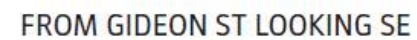
- Approximately 1,900 sf of sidewalk furniture zone
- Approximately 11,400 stones
- Associated with Portland-Milwaukie Light Rail Project







BIRD'S EYE PERSPECTIVE



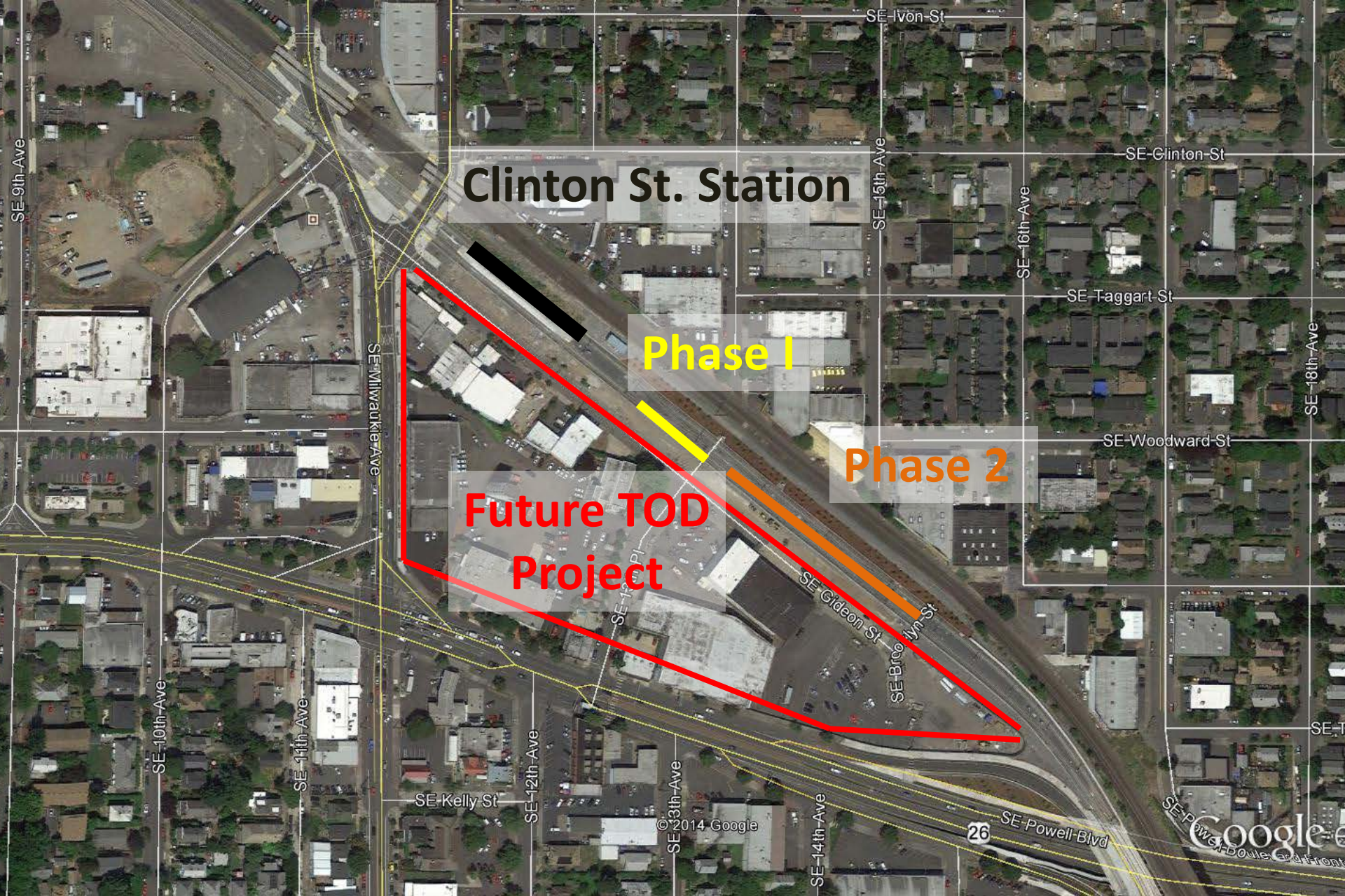
Cobblestone Criteria

- CRITERIA: Cobblestones should be reused primarily in districts or areas of the City **where they were originally used**. Historic Districts and Historic Landmarks where cobblestones were originally used as the paving material should receive first priority.
- FINDINGS:
 - TriMet and City crews unearthed several pallets of cobbles from the 11th/12th Ave prism.
 - Location is central to historic trolley system.
 - Adjacent historic buildings



Cobblestone Criteria

- CRITERIA - As a general policy, cobblestones should be used for large paving areas, primarily in public pedestrian spaces where the special character of the cobblestone texture would be meaningful.
- FINDINGS:
 - Light rail station area, heavy pedestrian traffic
 - Future transit-oriented development site
 - Long stretch of old industrial street



Clinton St. Station

Phase I

Phase 2

**Future TOD
Project**