

Tabor Reservoir Adjustments: Historic Resource and Environmental Reviews

Portland Historic Landmarks Commission

December 1, 2014

Presenters:

Kristen Minor (Peter Meijer Architects)

Teresa Elliott, P.E., Principal Engineer

Tom Carter, Sr. City Planner

Portland Water Bureau (PWB)

Tabor Historic Districts



Tabor Reservoir Adjustments

- Review Framework
 - Type III Historic Resource & Type II Environmental reviews only
 - Not a Conditional Use review
 - Oregon SHPO / Section 106 reviews are not part of this city process
 - This land use review is only about the current proposal, not the future

Why are we doing this project?

- In June 2013, City Council announced Portland would comply with the Long Term 2 Enhanced Surface Water Treatment Rule (LT2) and directed PWB to proceed with the projects proposed for compliance.
- LT2 requires either covering the reservoirs or constructing treatment facilities at the outlets, which would have major impacts on the historic resources and environment.

What does this project include?

- Disconnects the reservoirs from the water system.
- Constructs a large-diameter pipe to carry water around the reservoirs.
- Maintains the ability to fill, drain, and clean the reservoirs.
- Work to disconnect is reversible.
- Minimizes effects on the historic and environmental resources, the park, park users, and neighbors.

The Simplified Water System Today



And goes to distribution or to Washington Park

Passes through the reservoirs

Water from Powell Butte

Res 6

Res 5

Res 1

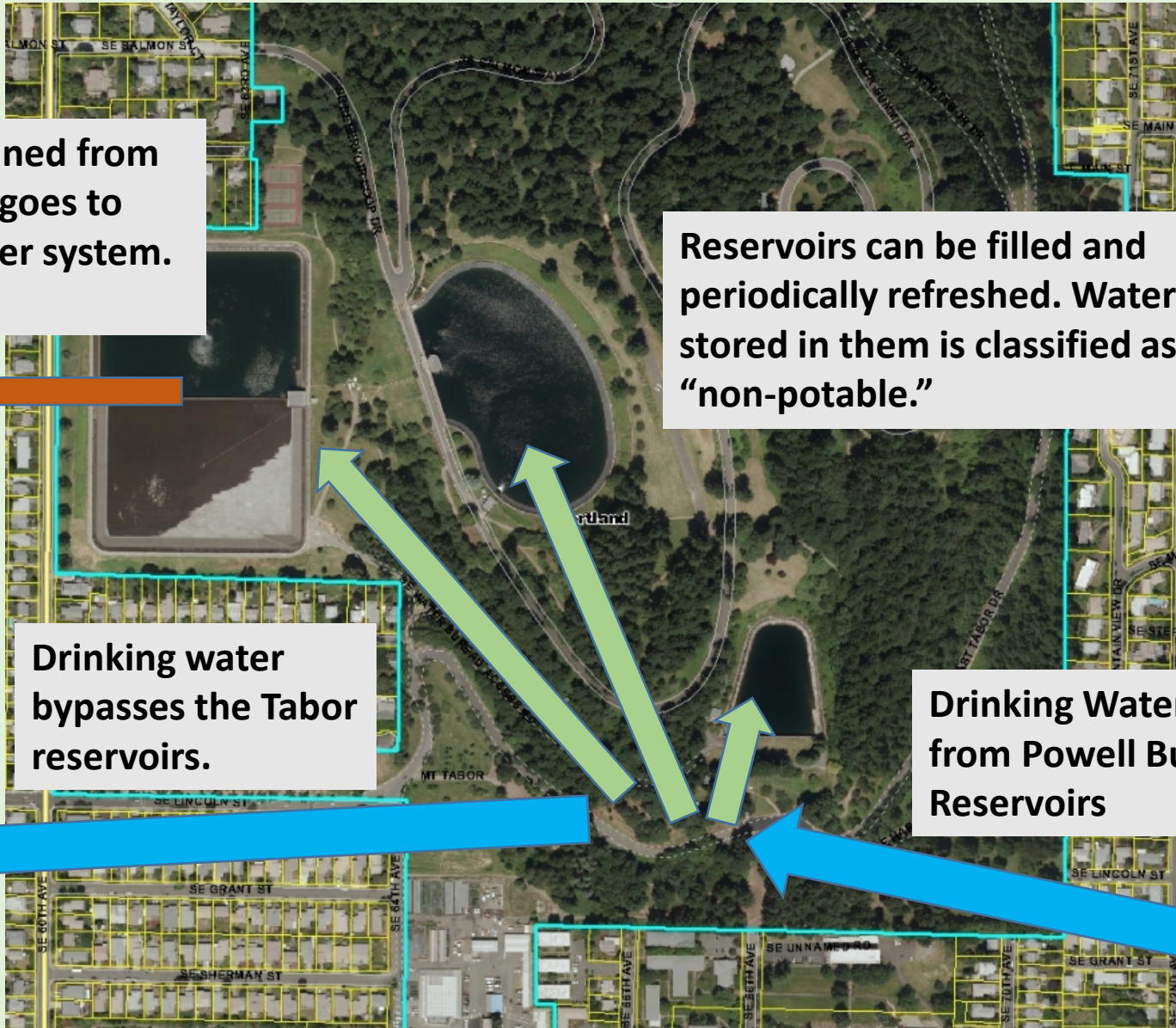
The Simplified Water System Afterward

Water drained from reservoirs goes to storm sewer system.

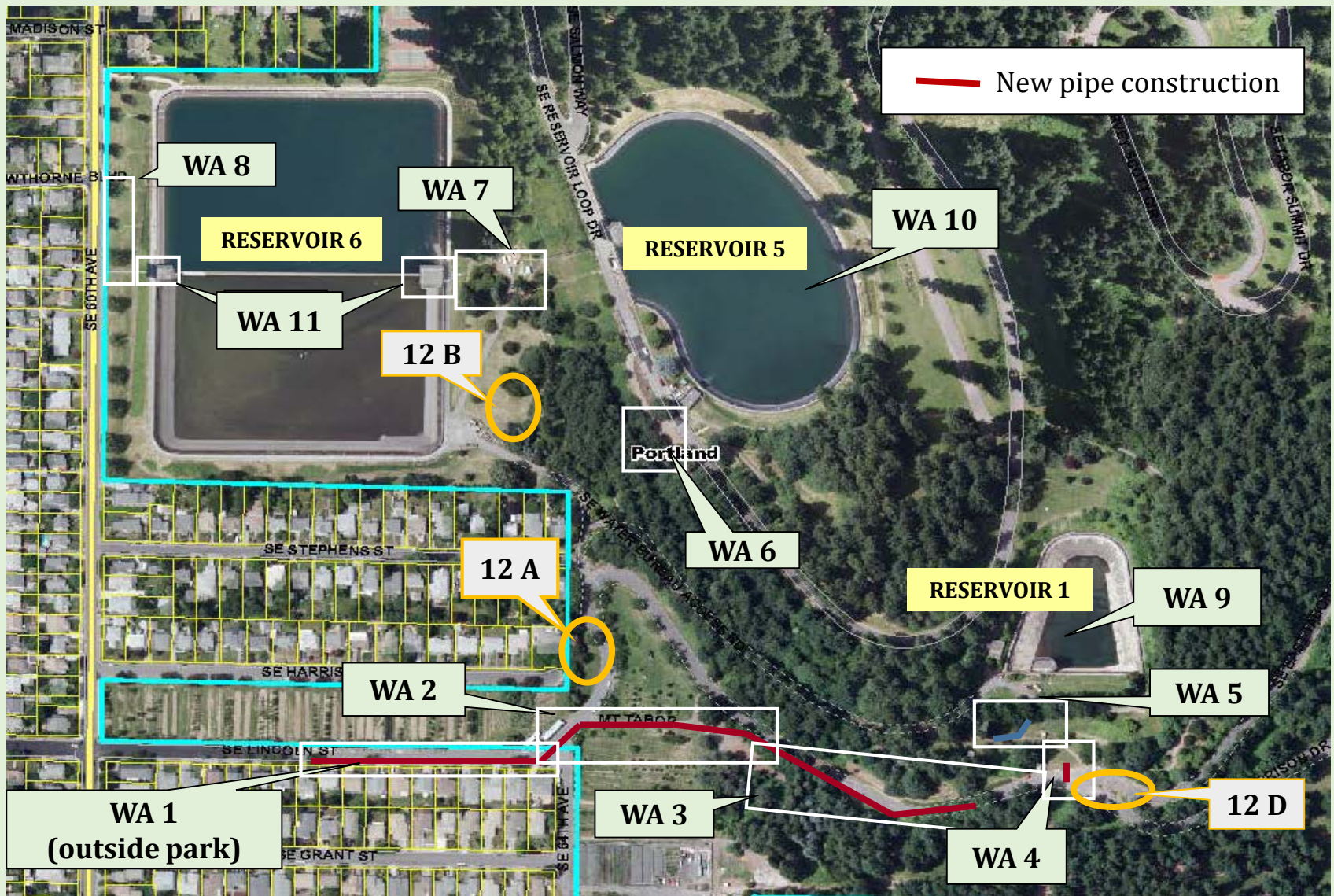
Reservoirs can be filled and periodically refreshed. Water stored in them is classified as "non-potable."

Drinking water bypasses the Tabor reservoirs.

Drinking Water comes from Powell Butte Reservoirs



Work Areas at Mount Tabor



WA 2-8 - Pipe Modifications

- 48-inch diameter pipe will be laid in WA 2 and WA 3 to connect two existing pipes.
- Large-diameter pipe connections will be constructed in WA 4 and 5.
- Vaults will be constructed in WA 3 and 5. Two manhole covers and a number of smaller cast-iron valve covers will be installed to access equipment.
- Above-ground vents will be installed in WA 5 and 6.
- Fifteen “cut-and-plugs” will be carried out in these work areas.

WA 2 – Lincoln Street Entrance



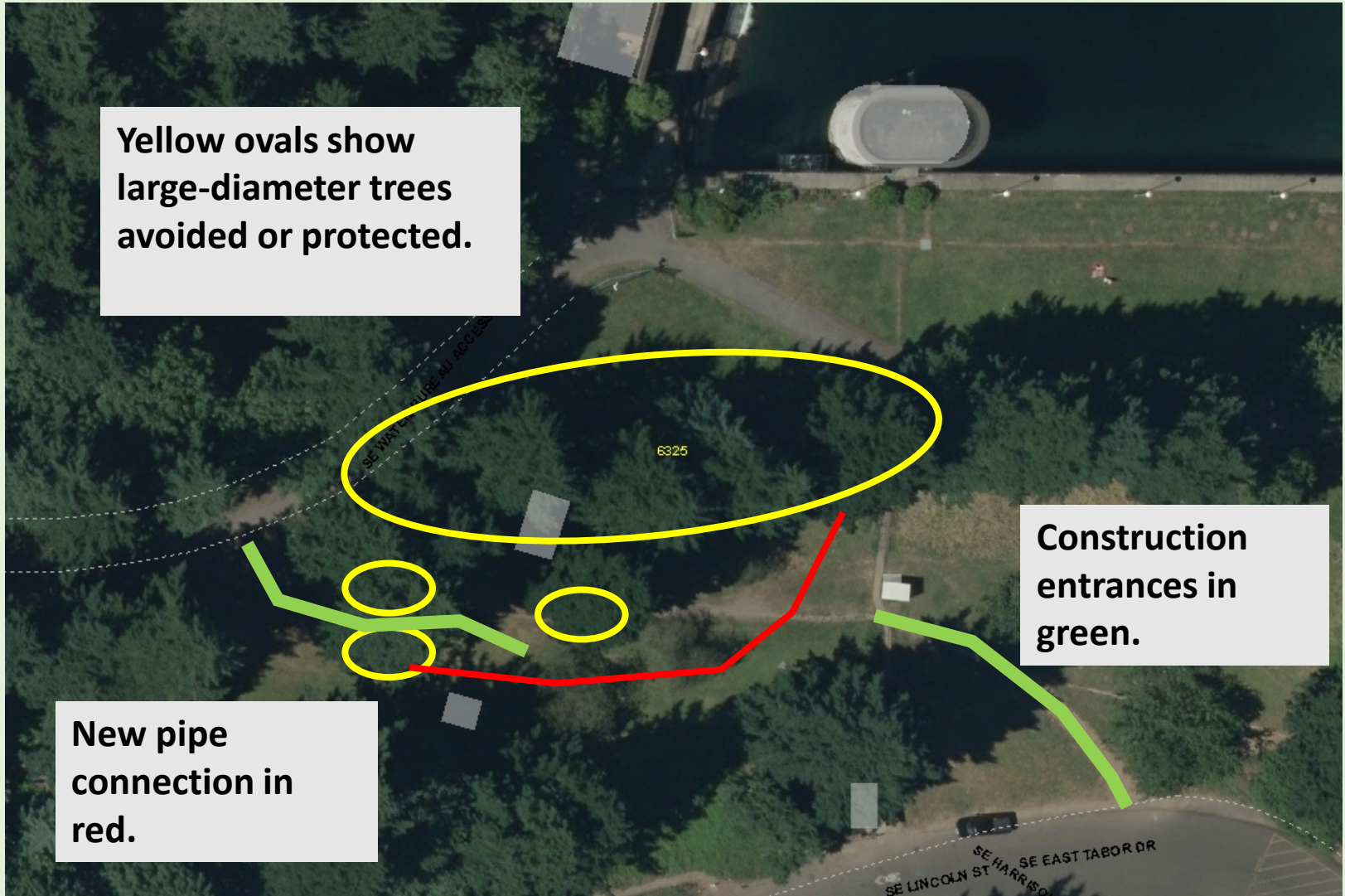
Work Areas 3 & 4



Work Area 5



WA5 Aerial



Yellow ovals show large-diameter trees avoided or protected.

Construction entrances in green.

New pipe connection in red.

Work Area 6



All work will be under the roadway, except the vent. No off-road disturbance in this e-zoned area.

A new vent pipe will be installed on top of the vault on the right.



Work Areas 7 & 8

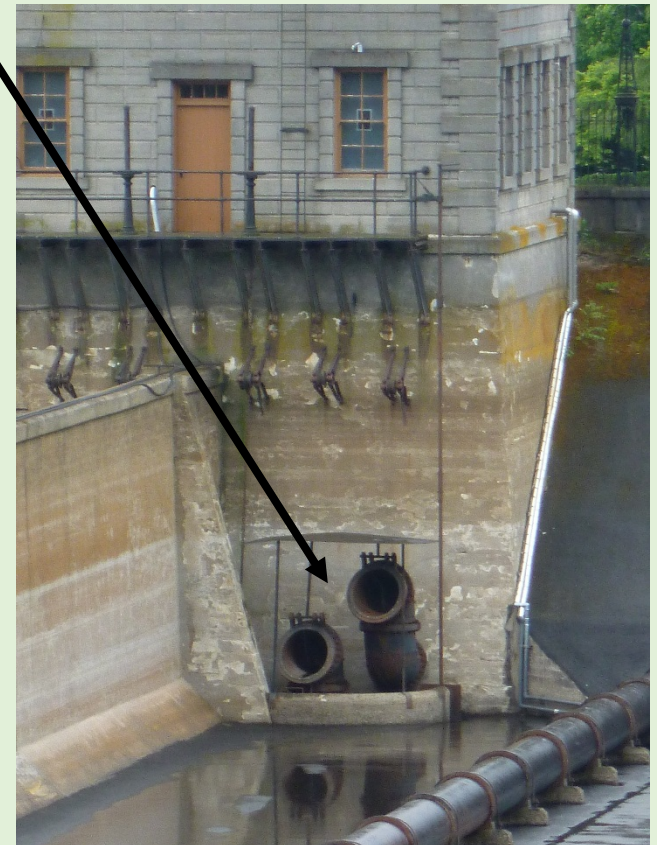


WA 9, 10 & 11 - Reservoir Openings



Some inlets will be capped; others will be blocked in a location not visible from the outside.

Outlets to drinking water system (such as these in WA 11) will be capped.



Reservoir 1 and 5 Inlet Weirs



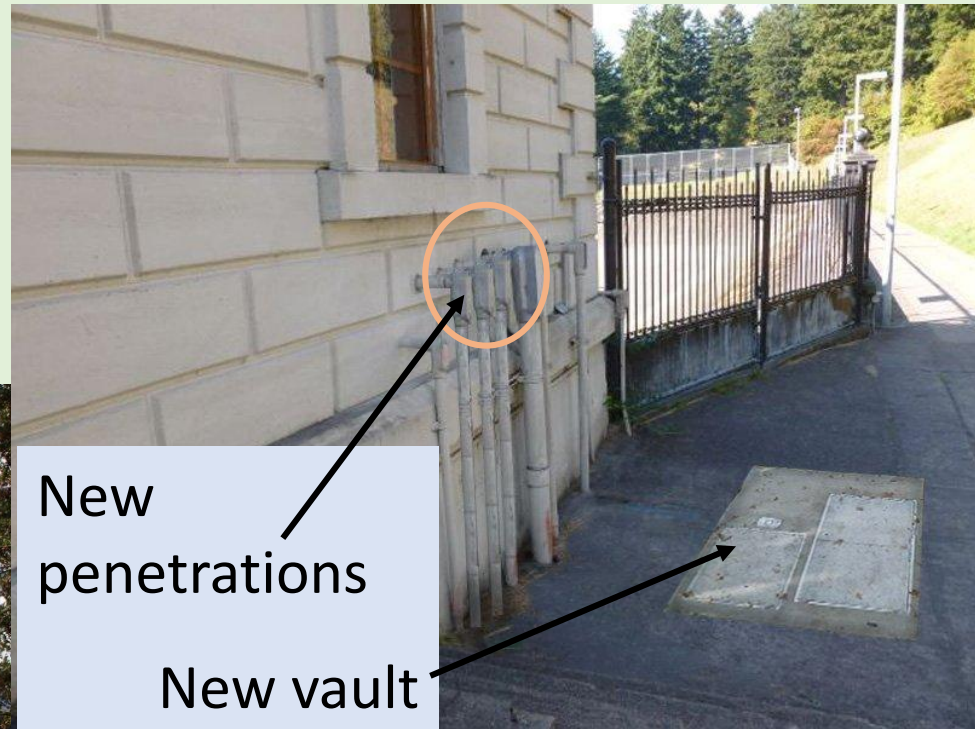
Before.

After. Because the screen will be recessed, it will be difficult to see.



WA 11 – Gatehouse 6 East Roof & Wall

New roof vents
here (to scale).



New
penetrations

New vault

Two new conduits if
needed, and one
new “pull box” vault.

Tree Summary

Work Area 2:

- 9 trees removed
- 4 protected, but mitigated

Work Area 3:

- 3 trees protected, but mitigated

Work Area 5:

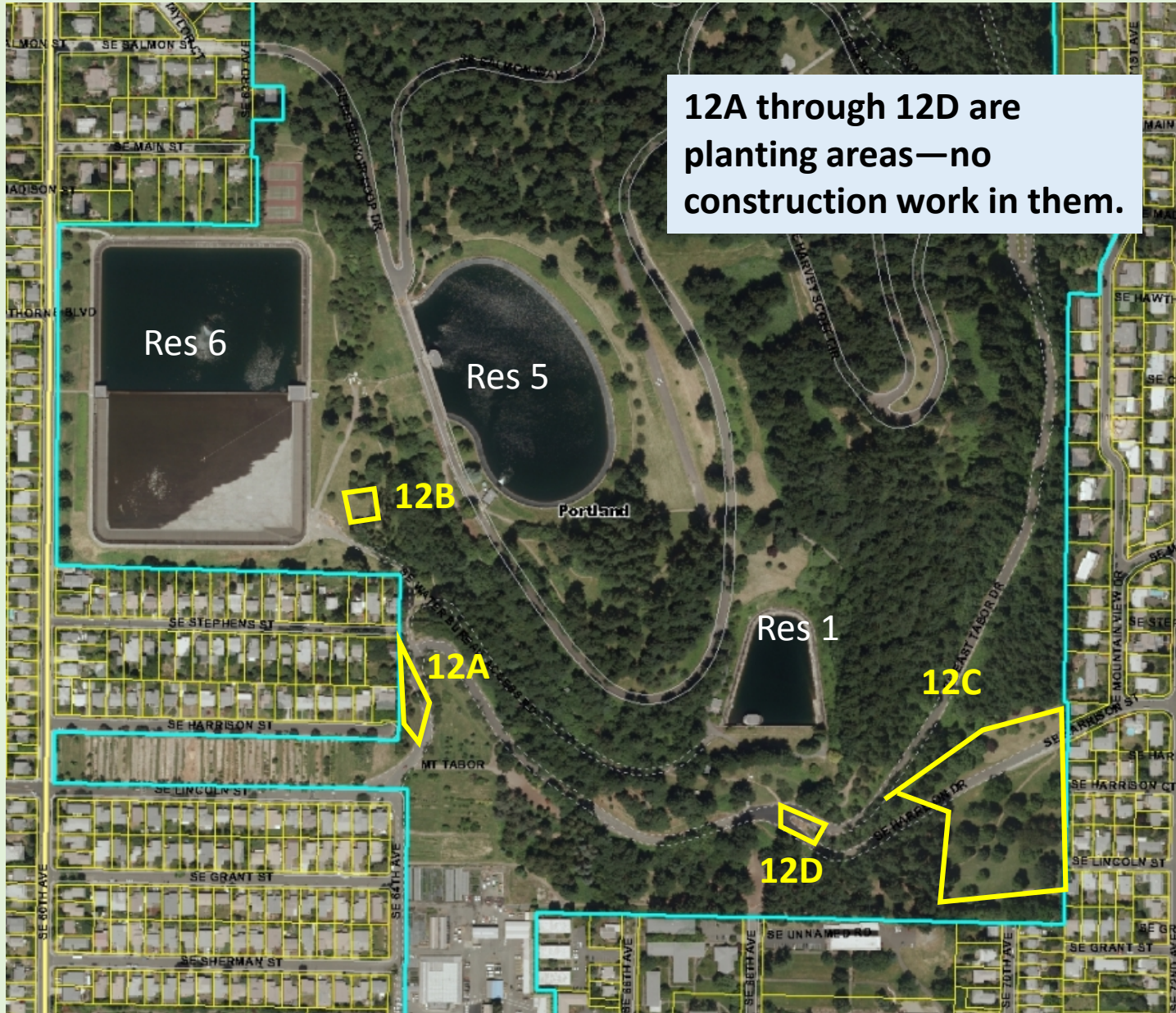
- 3 trees removed
- 3 trees protected, but mitigated

Grand total = 12 trees removed
(all under 14 inches diameter at breast height)
and
10 trees protected, but mitigated

Tree Planting

- No tree mitigation required by Zoning Code (Title 33) for this proposal.
- No tree impacts in environmental zones because all disturbance is in the existing roadways or in an existing vault (WA 3 and 6).
- The “landscape” is a “contributing (historic) resource,” so removals and plantings are part of the HR review.
- Plant locations have been coordinated with PWB, Parks, and neighbors.
- Remaining mitigation to be determined under Title 11 or Title 20 during Non-Parks Use Permit process.

Planting Overview



12A through 12D are planting areas—no construction work in them.

Work Areas 2 and 5



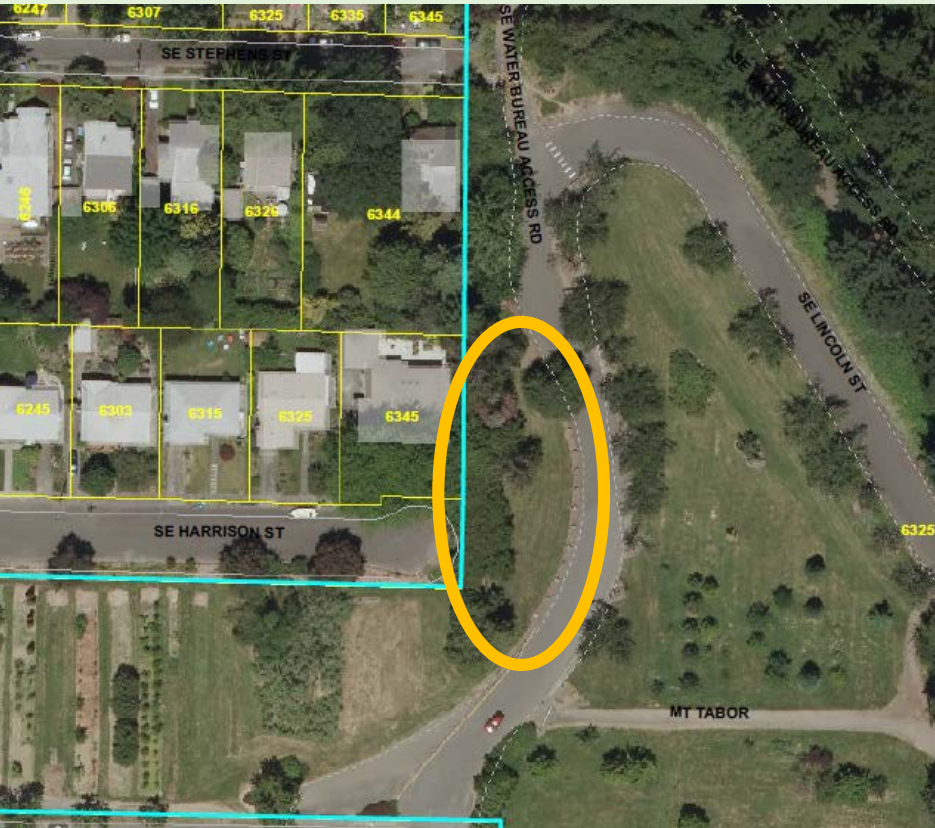
Work Area 2

Work Area 5



Planting Areas 12A & 12B

Area 12B



Area 12A



Planting Area 12C

Before



After

Planting Area 12D

Before



After



Comments on BDS-Recommended Conditions of Approval

HR-B. Leave water in the reservoirs after disconnection.

- Exceptions needed for cleaning, maintenance, safety, and operational needs.
- This LUR should not pre-determine the future development and use of the site.
- This condition should be temporary—until City Council decides and funds a future use.

However—

- PWB believes that the water is a use, not a development.
- This is like requiring the Portland Trailblazers to continue to play in Memorial Coliseum, a historic structure that was built to house them.

Comments on BDS-Recommended Conditions (p. 2)

HR-C. Develop interpretation program.

- Small proposal, few visible changes. An interpretation program may not be proportionate to the impacts being created.
- PP&R will be carrying out capital work in the park, which is a more appropriate time to develop an interpretation program.

HR-D. Stop work if archeological artifacts discovered.

- PWB will follow SHPO's protocol for responding to inadvertent discovery of cultural resources (which meets this condition).

EN-B.1. Only hand-held equipment outside disturbance fence.

- Add provision that this is only for the environmental zones (in WA 3 and 6).

EN-B.2. Only native vegetation to be used in revegetation.

- Add provision that this is only for the environmental zones (in WA 3 and 6).

Thank You

Project Contacts:

Tom Carter, Senior City Planner

tom.carter@portlandoregon.gov

503-823-7463

Teresa Elliott, P.E, Principal Engineer

Teresa.Elliott@portlandoregon.gov

503-823-7622