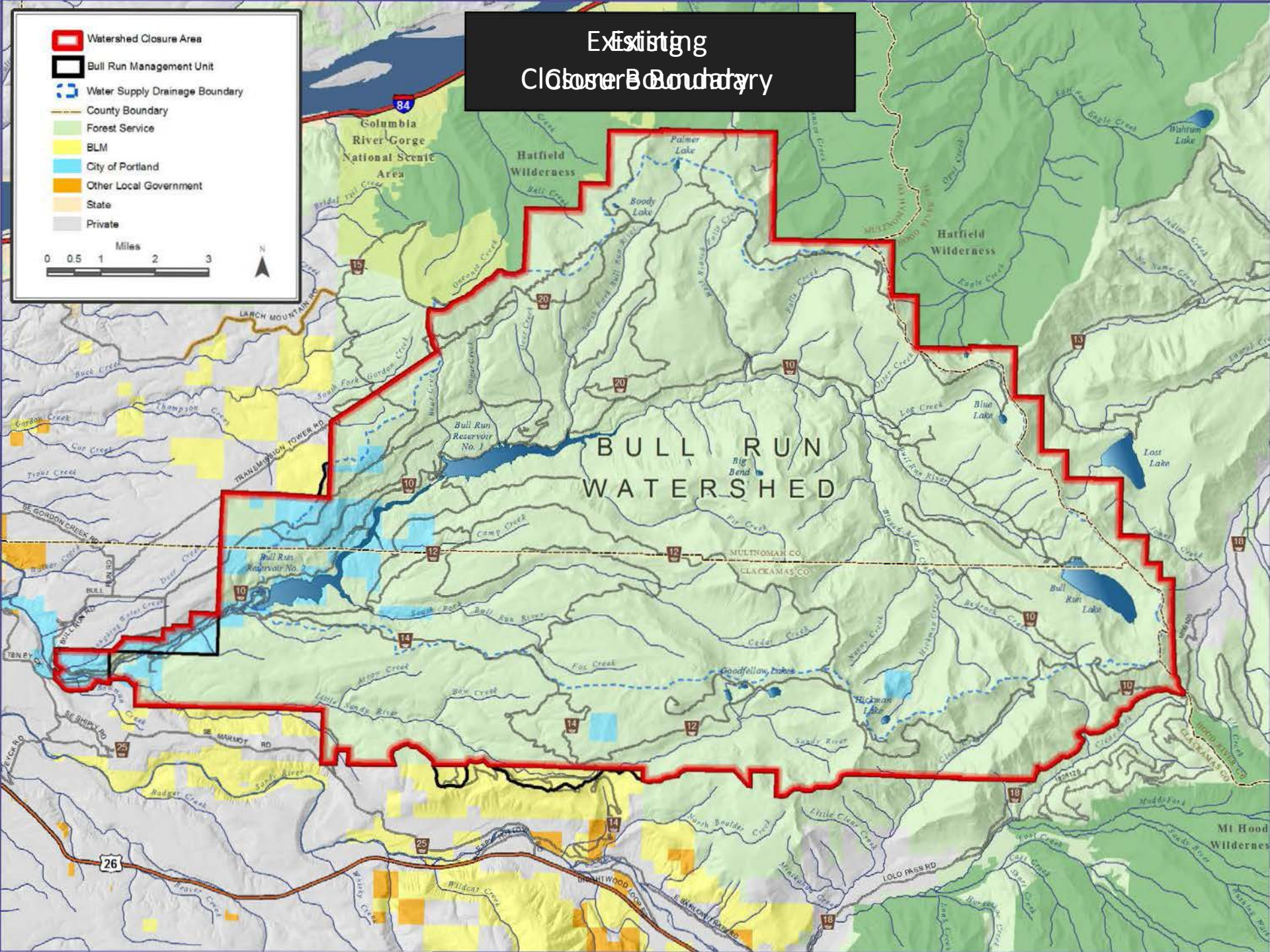




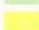



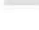
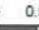


# Existing Closure Boundary

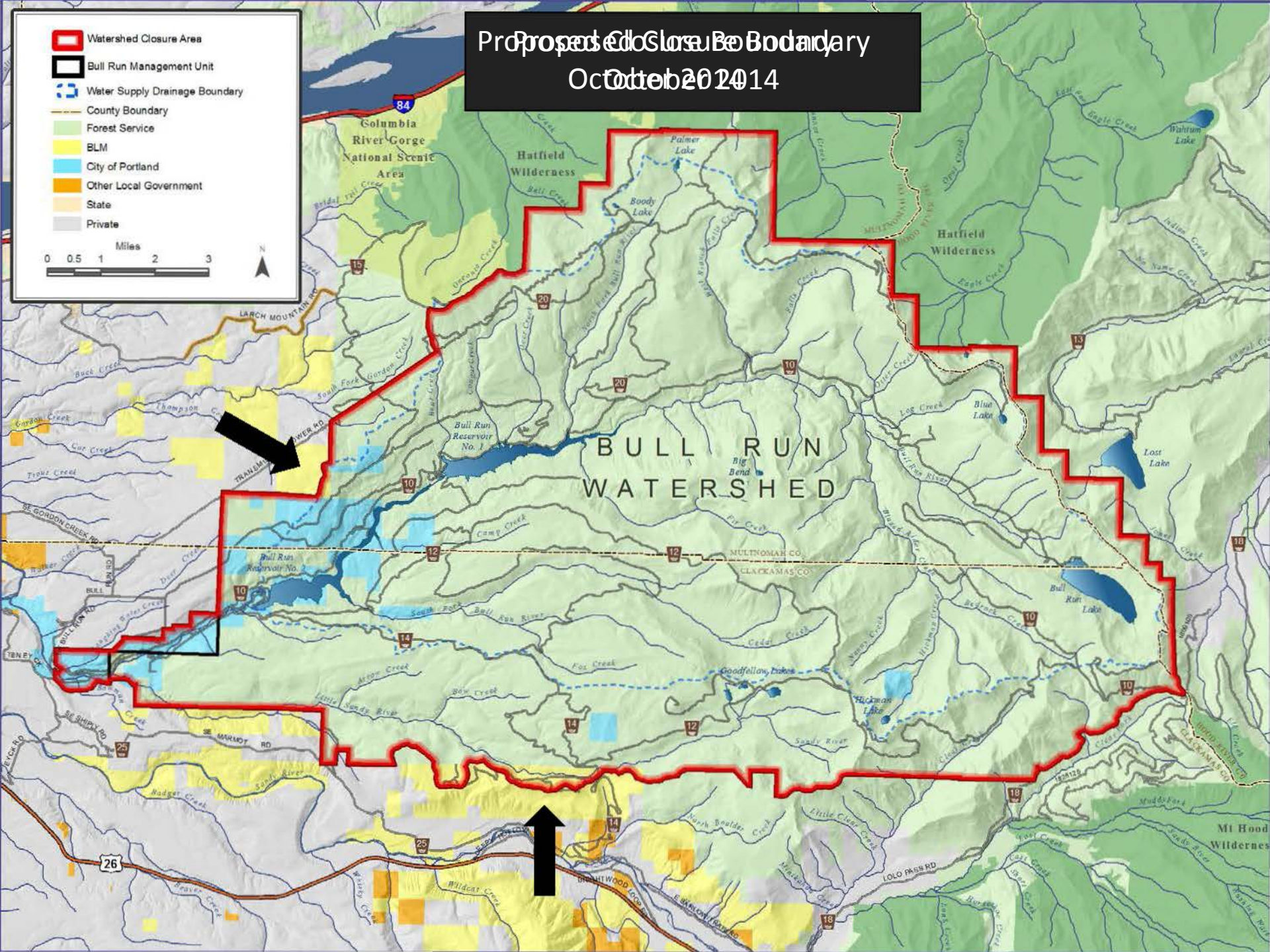

- Watershed Closure Area
- Bull Run Management Unit
- Water Supply Drainage Boundary
- County Boundary
- Forest Service
- BLM
- City of Portland
- Other Local Government
- State
- Private


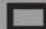










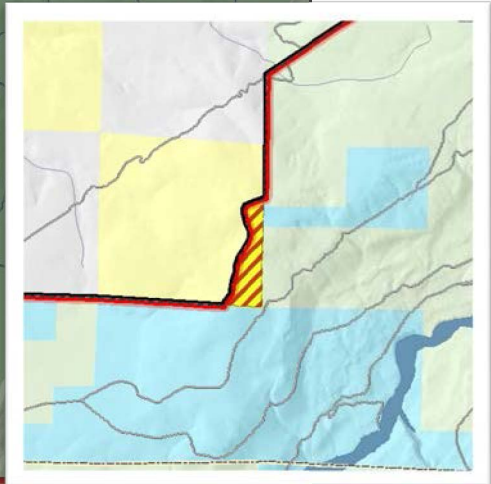
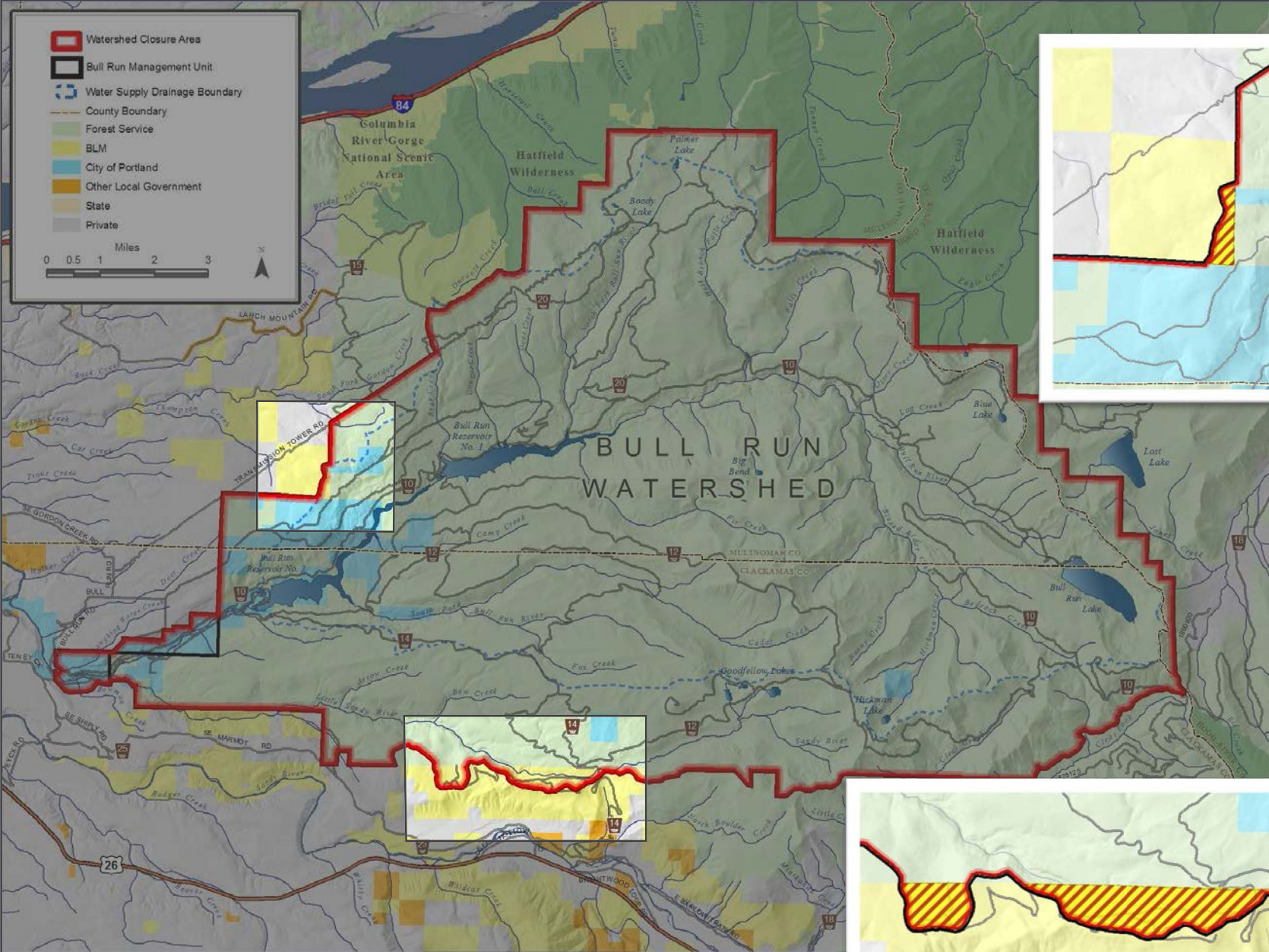
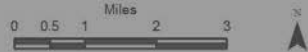
# Proposed Closure Boundary October 2014

-  Watershed Closure Area
-  Bull Run Management Unit
-  Water Supply Drainage Boundary
-  County Boundary
-  Forest Service
-  BLM
-  City of Portland
-  Other Local Government
-  State
-  Private

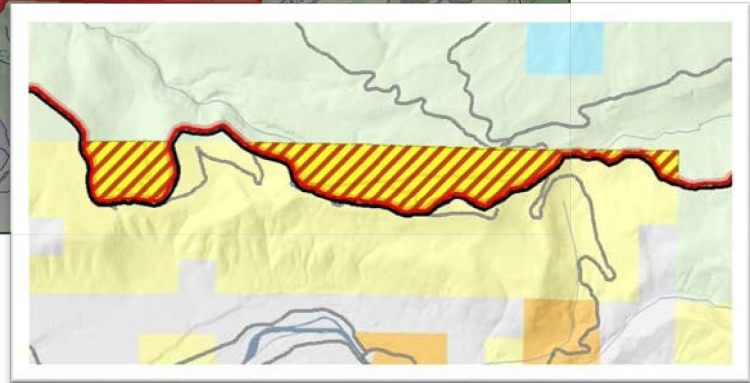
Miles  
0 0.5 1 2 3



-  Watershed Closure Area
-  Bull Run Management Unit
-  Water Supply Drainage Boundary
-  County Boundary
-  Forest Service
-  BLM
-  City of Portland
-  Other Local Government
-  State
-  Private



60 acres  
0.1 sq. mi



586 acres  
0.9 sq. mi

# Summary of Council Action

- BLM Lands Added to Closure Area
- Trespass Fine on City Lands Increased to \$1,250
- County Court Jurisdictions Clarified
- Administrator Authority to Pursue Enforcement Clarified