



2035 Comprehensive Plan *Overview of the Proposed Draft*

Design Commission
September 18, 2014



Bureau of Planning and Sustainability
Innovation. Collaboration. Practical Solutions.



What is the Comprehensive Plan?

- State-mandated, long-range plan
- Prepare for and manage growth
- Plan and coordinate major investments
- Guide decision-making on land use, transportation, parks, sewer and water systems, natural resources, etc.

Periodic Review

- Task 1- Community Involvement Plan (acknowledged 2010)
- Task 2 – Inventory and Analysis (acknowledged 2014)*
- Task 3 – Consideration of Alternatives (commission reviewed Growth Scenario Report in 2013)
- Task 4 – Policy Choices ← we are here now (The Plan! – Goals and Policies, Map, Projects)
- Task 5 – Implementation (coming in 2015)

* The EOA has been withdrawn and will come back to the PSC in 2014

Preparing for growth

Portland today...

- Roughly 260,000 households
(over 600,000 people)
- Roughly 390,000 jobs

We are Planning for....

- 122,000 new households
- 140,000 new jobs

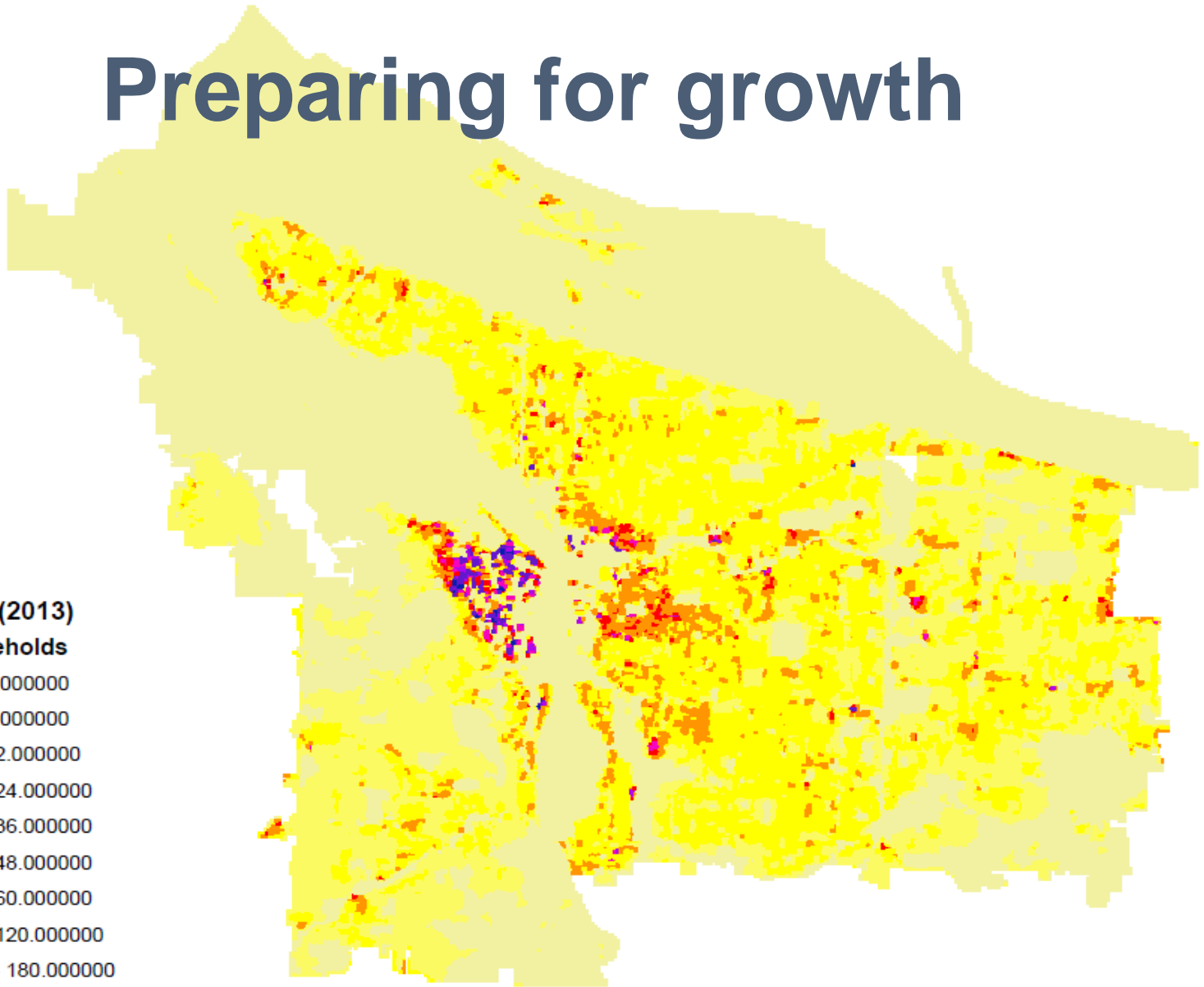
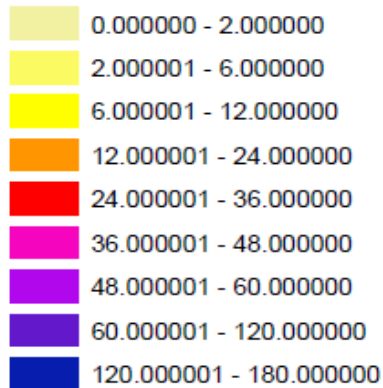
*Baseline year is 2010, the planning horizon is 2035

Preparing for growth

Legend

BLI Allocation (2013)

Total 2010 Households

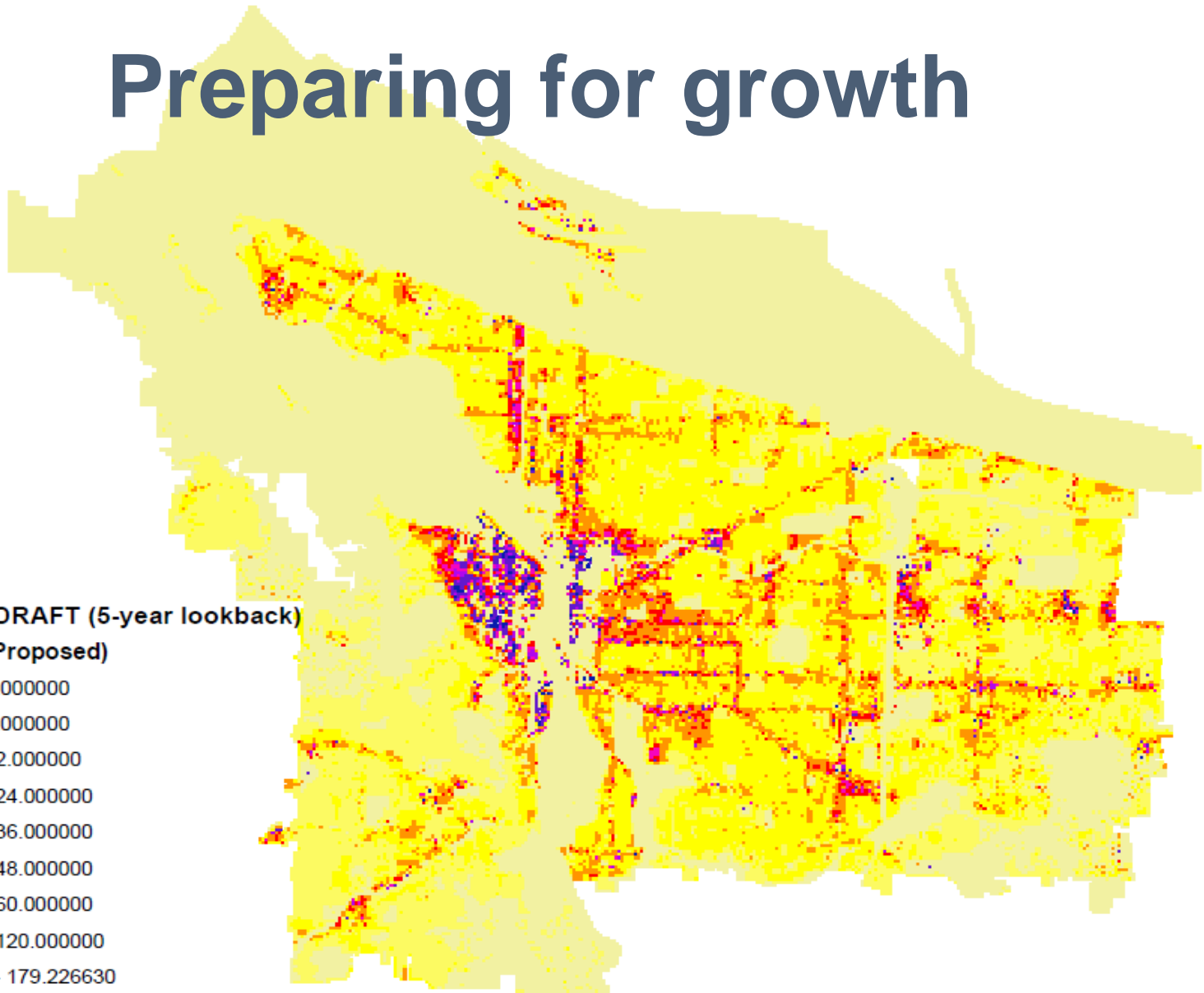
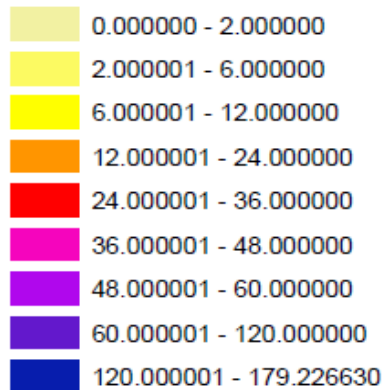


Preparing for growth

Legend

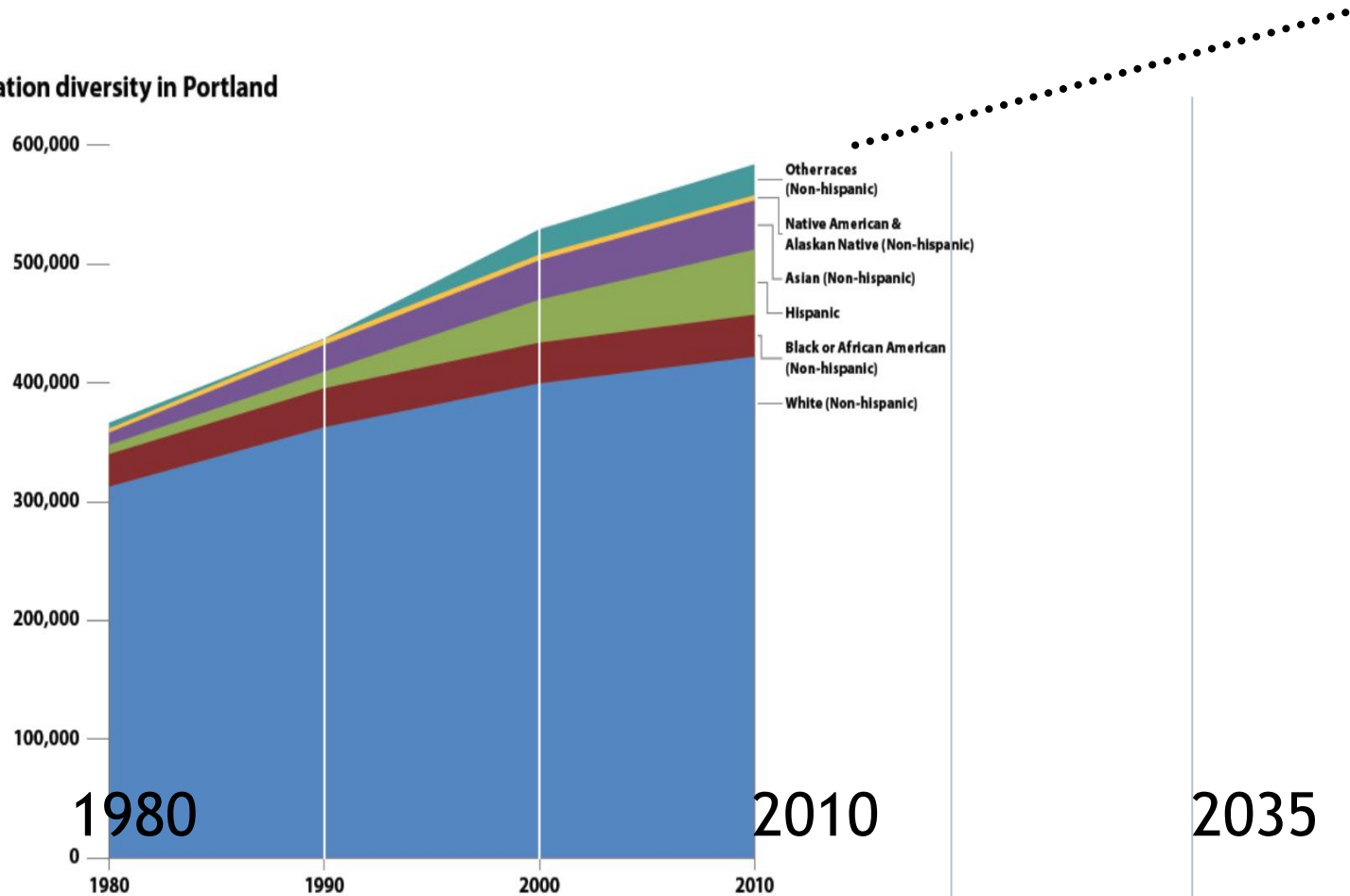
BLI Allocation DRAFT (5-year lookback)

Forecast Units (Proposed)

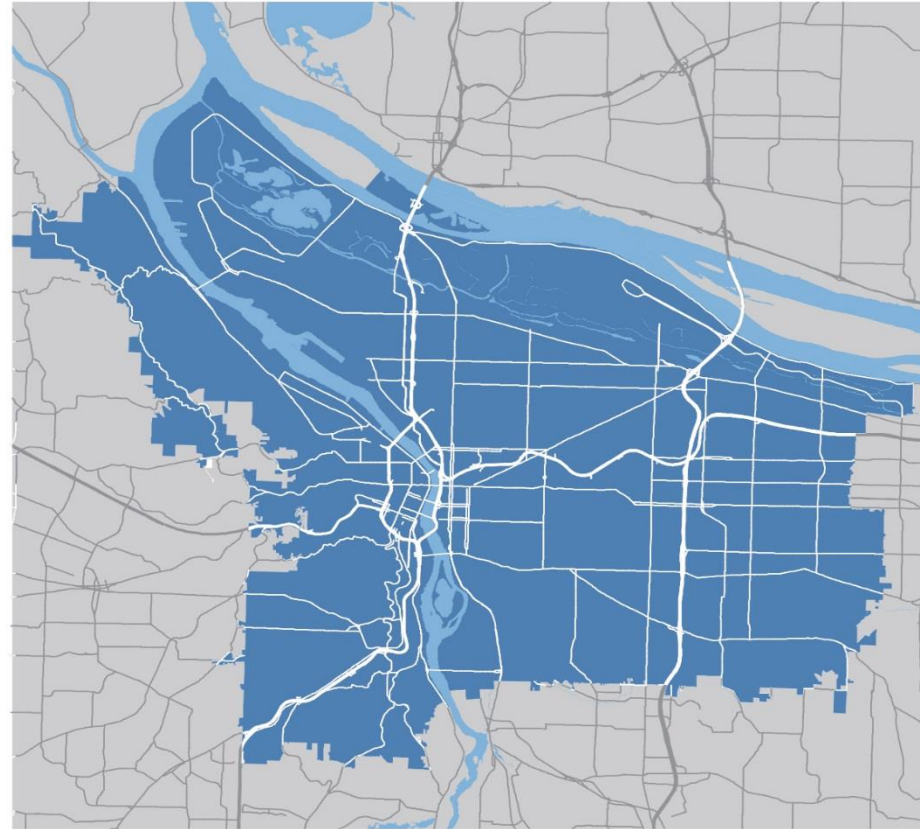
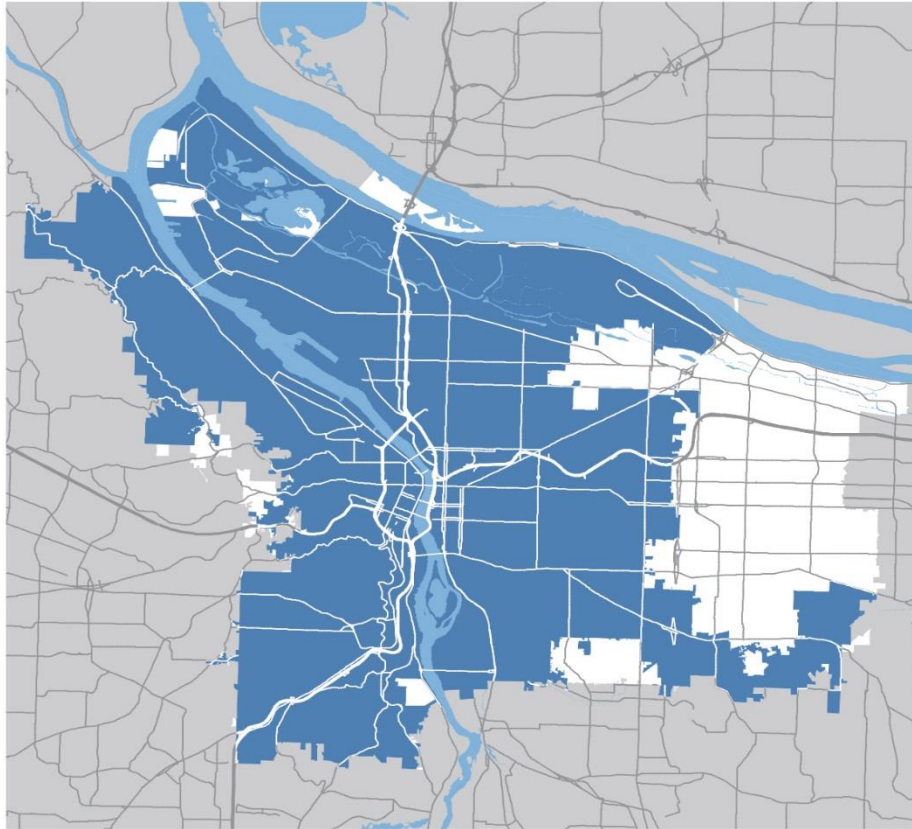


30 Years of Change

Growth in population diversity in Portland



1980 and Today



12 Measures of Success

1. Equity and inclusion
2. Resident Satisfaction
3. Educated Youth
4. Prosperous Households
5. Growing Businesses
6. Job Growth
7. Transit and Active Transportation
8. Reduced Carbon Emissions
9. Complete Neighborhoods
10. Healthier People
11. Safer City
12. Healthy Watersheds

Plan Elements

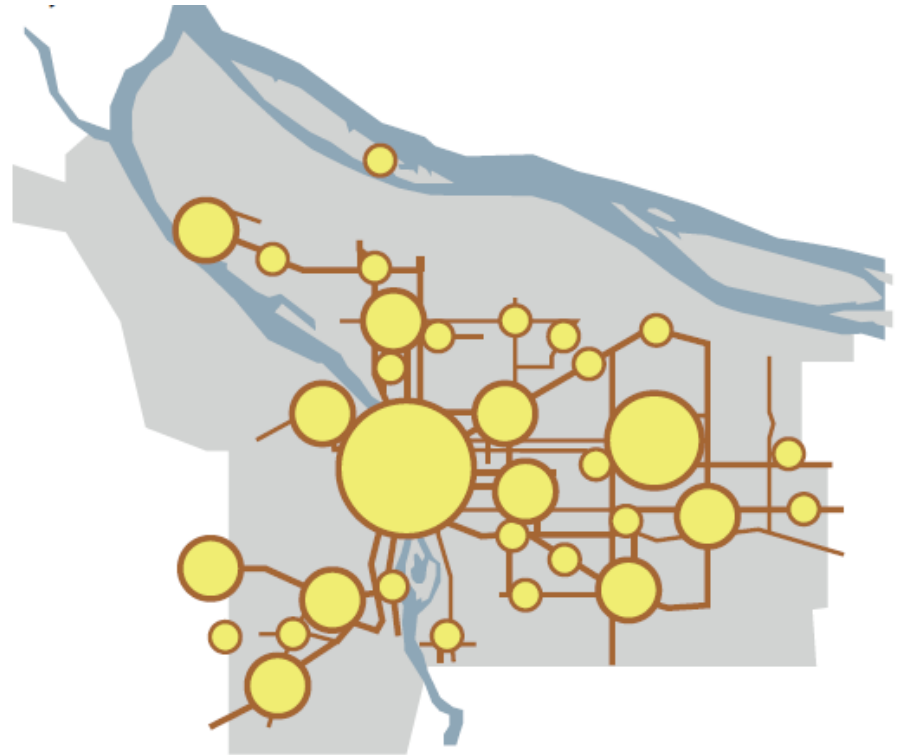
1. Goals and Policies
 2. List of Significant Projects
 3. Comprehensive Plan Map
 4. Portions of the Transportation System Plan (TSP)
- + Citywide Systems Plan (a supporting document)

Vision for 2035

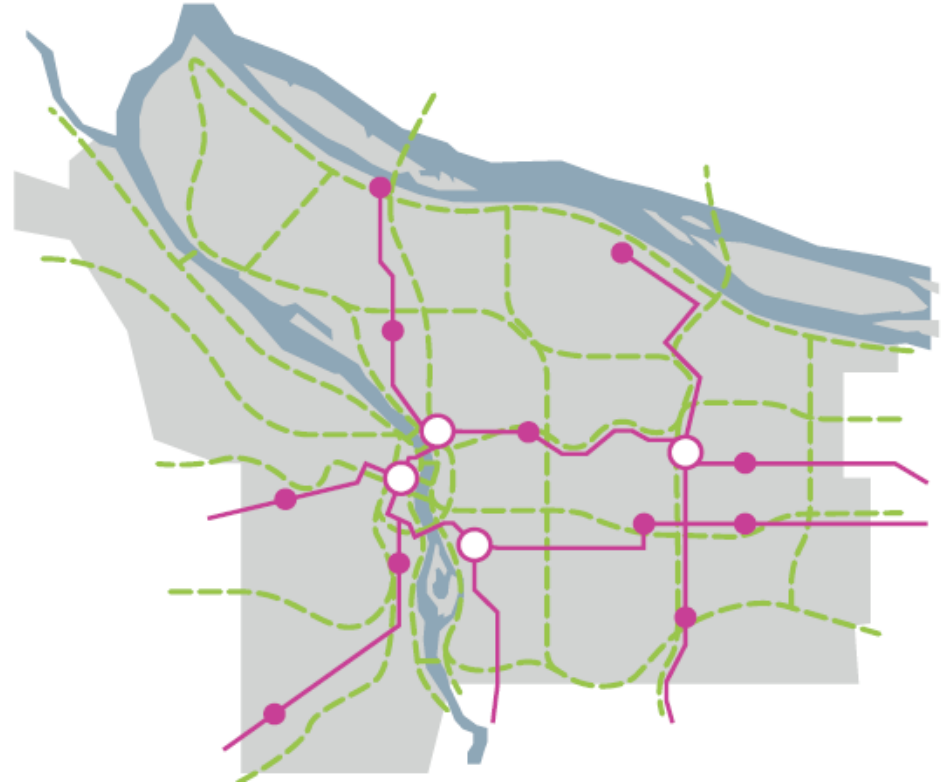
Portland is a prosperous, healthy, equitable and resilient city where everyone has access to opportunity and is engaged in shaping decisions that affect their lives.

- Thriving low-carbon economy
- Involvement in community decisions
- Nature woven into the city
- Distinctive neighborhoods and a vibrant downtown
- Resiliency and management of environmental risks

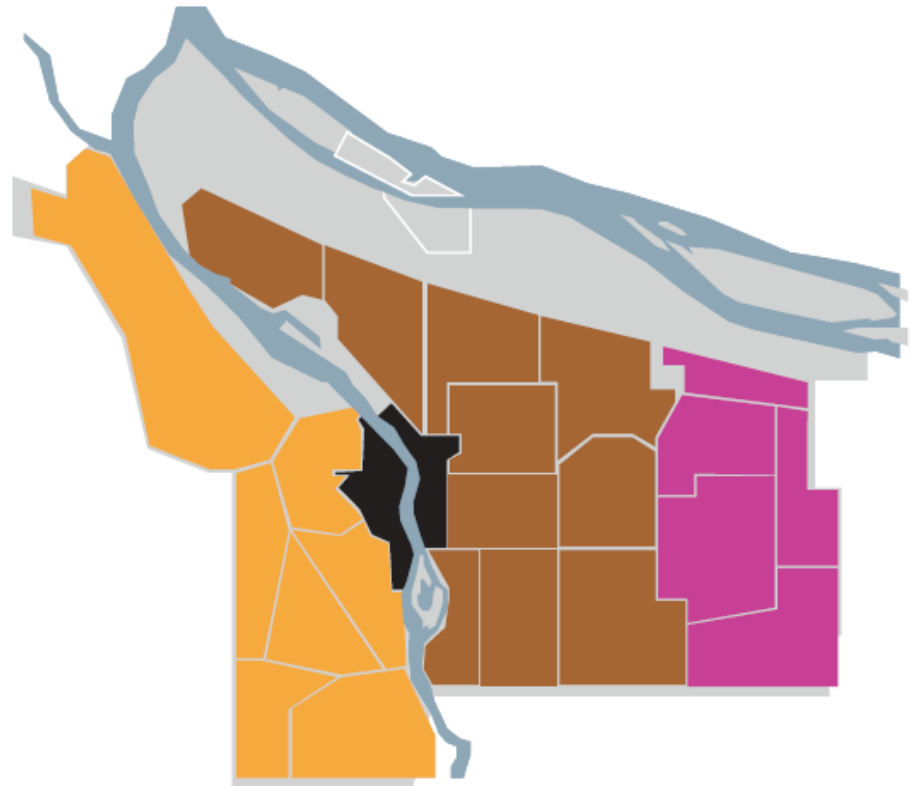
Complete Neighborhoods



Connect People and Neighborhoods



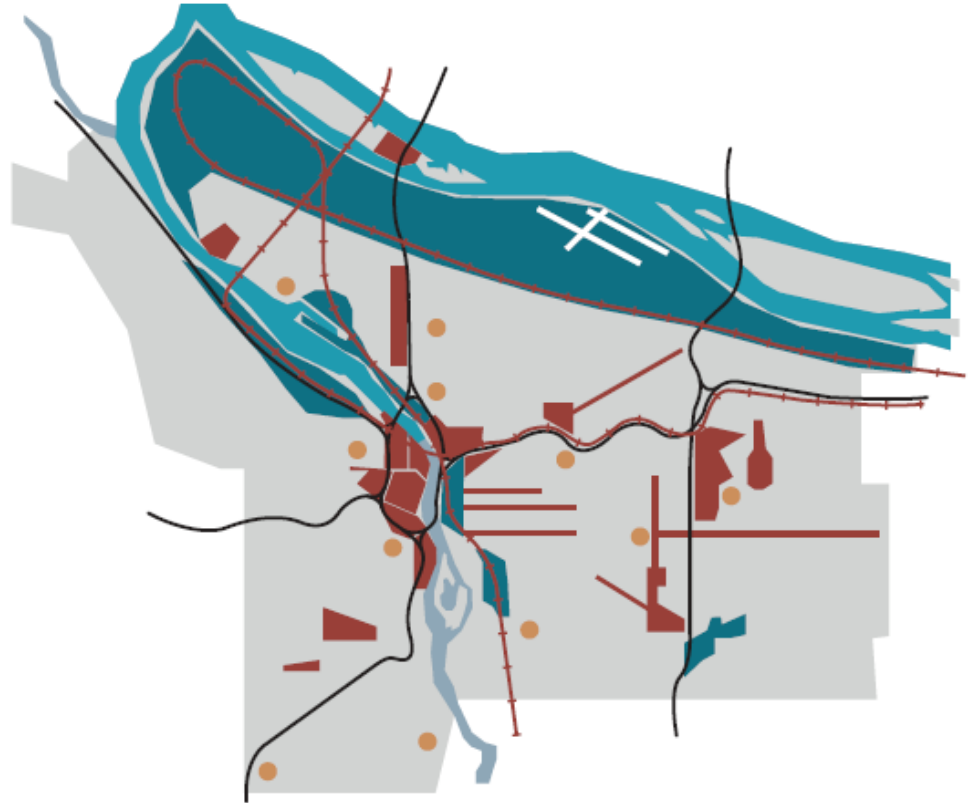
One Size Does Not Fit All



Improve Natural Areas and Open Spaces



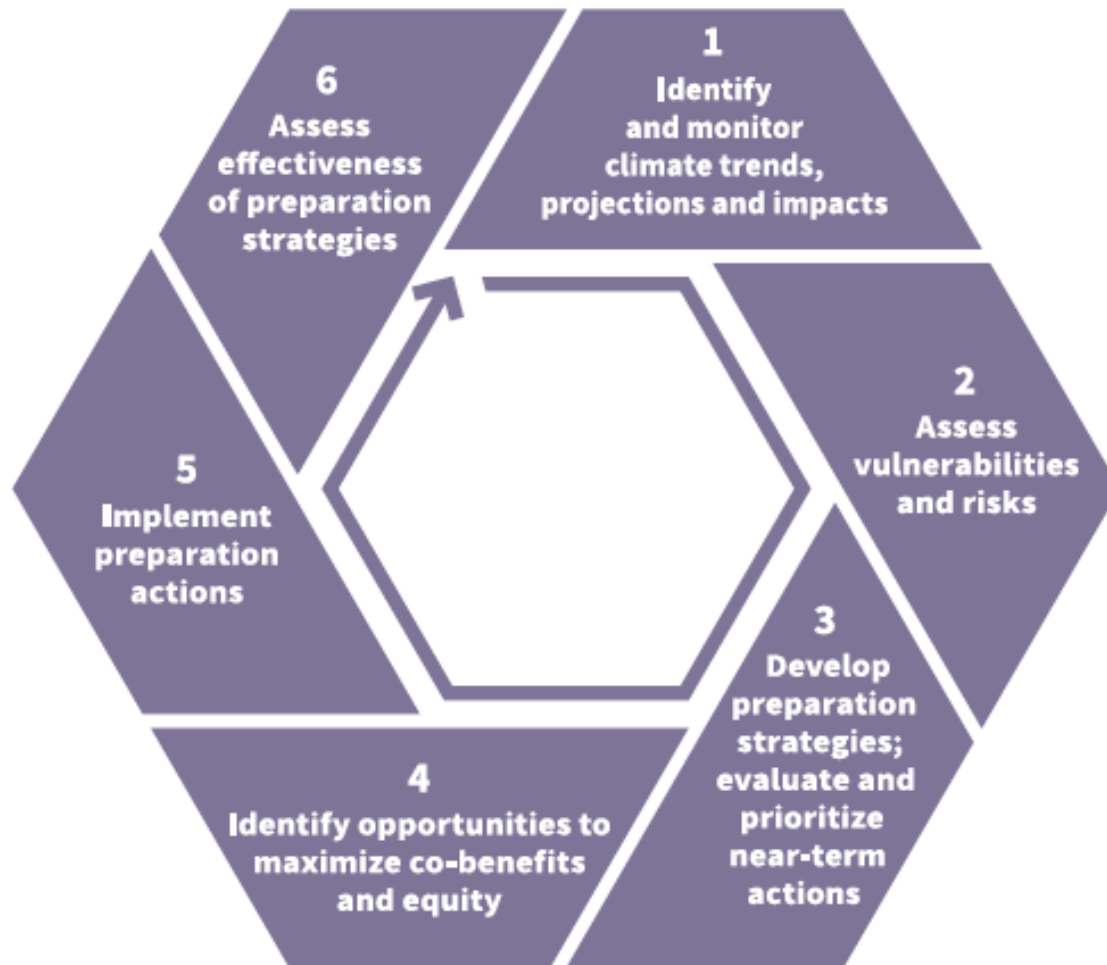
Encourage Job Growth



Resiliency



Low Carbon Community



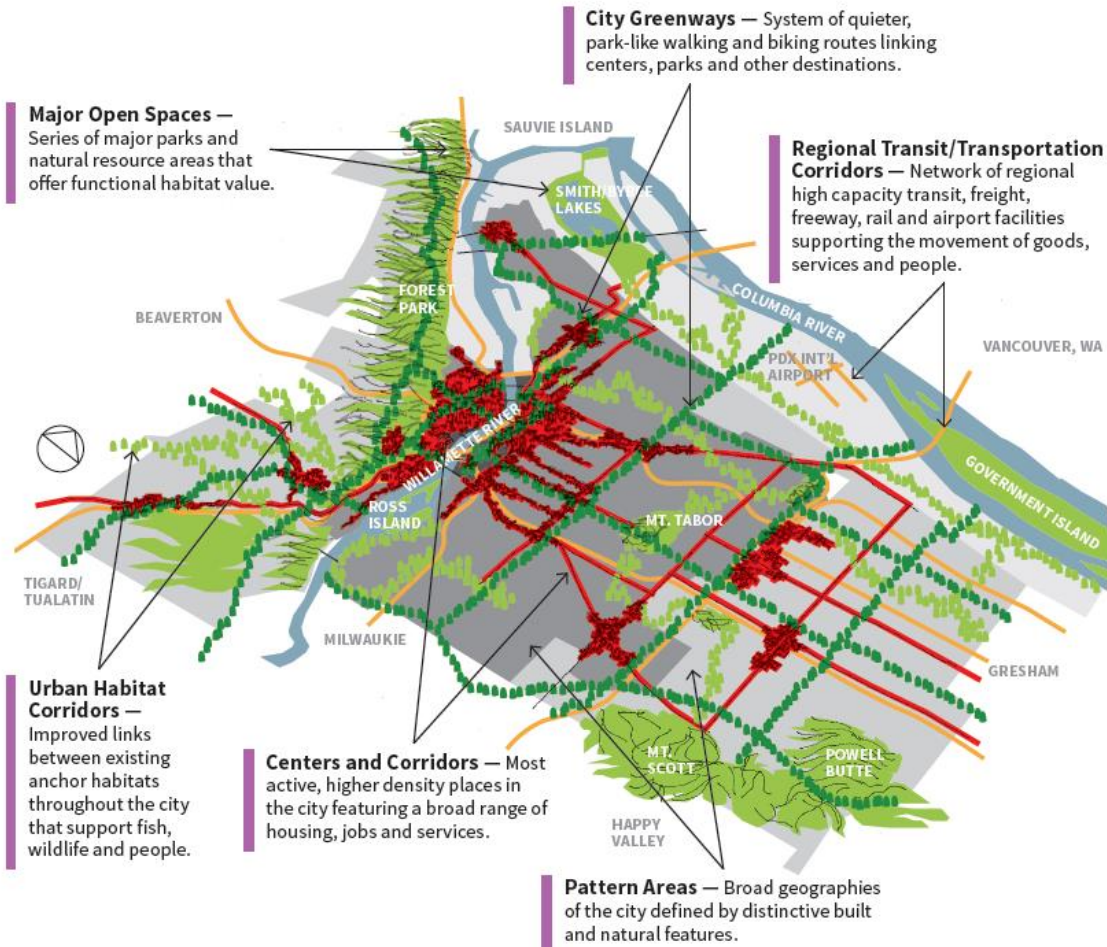
This diagram summarizes the adaptive management planning process the City of Portland is using to prepare for climate change.

Reliable Infrastructure to Equitably Serve All Parts of the City

- System maintenance
- System deficiencies
- Future needs/growth
- Equity



Urban Design

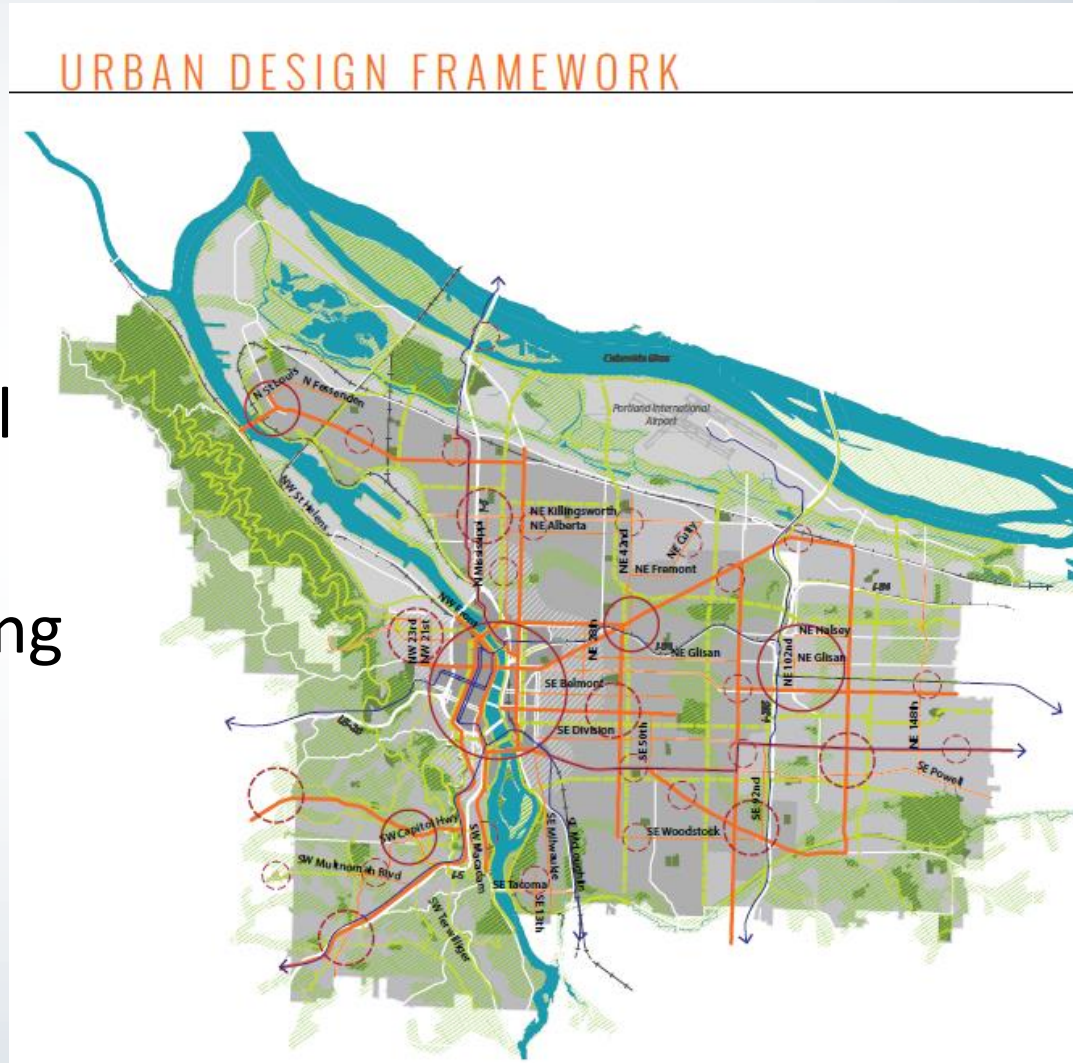


Urban Design Framework

What is it?

How is it used?

- Concept Illustration
- Communication tool
- Defines place types
- Informs later planning work



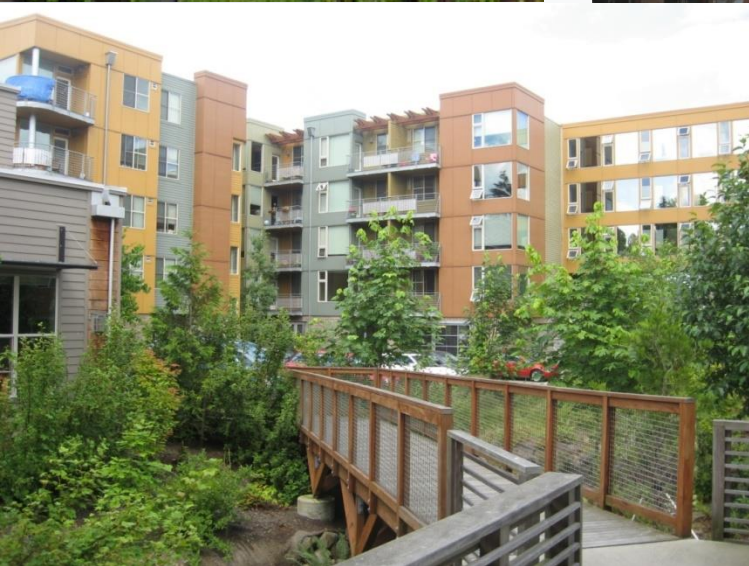
Pattern Areas



PATTERN AREAS



Central City
Inner Neighborhoods
Western Neighborhoods
Eastern Neighborhoods
Rivers
Inner Ring Districts



Inner Neighborhoods



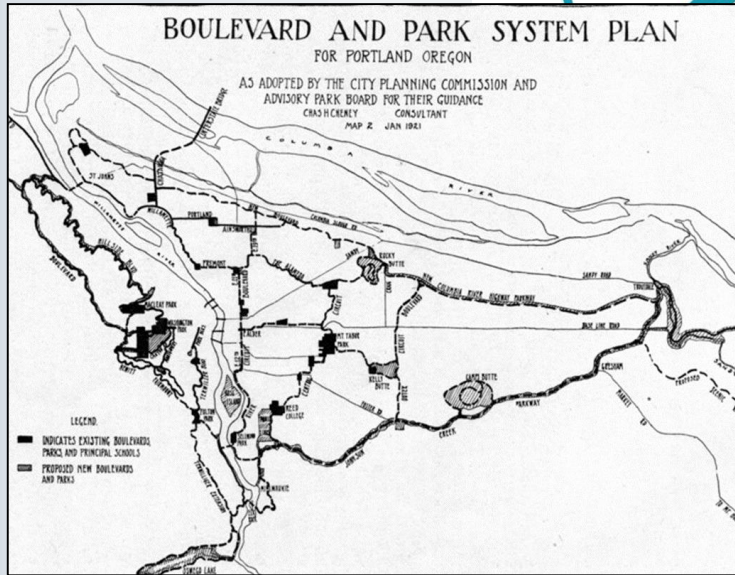
Western Neighborhoods

Eastern
Neighborhoods

City Greenways and Heritage Parkways



City Greenways and Heritage Parkway



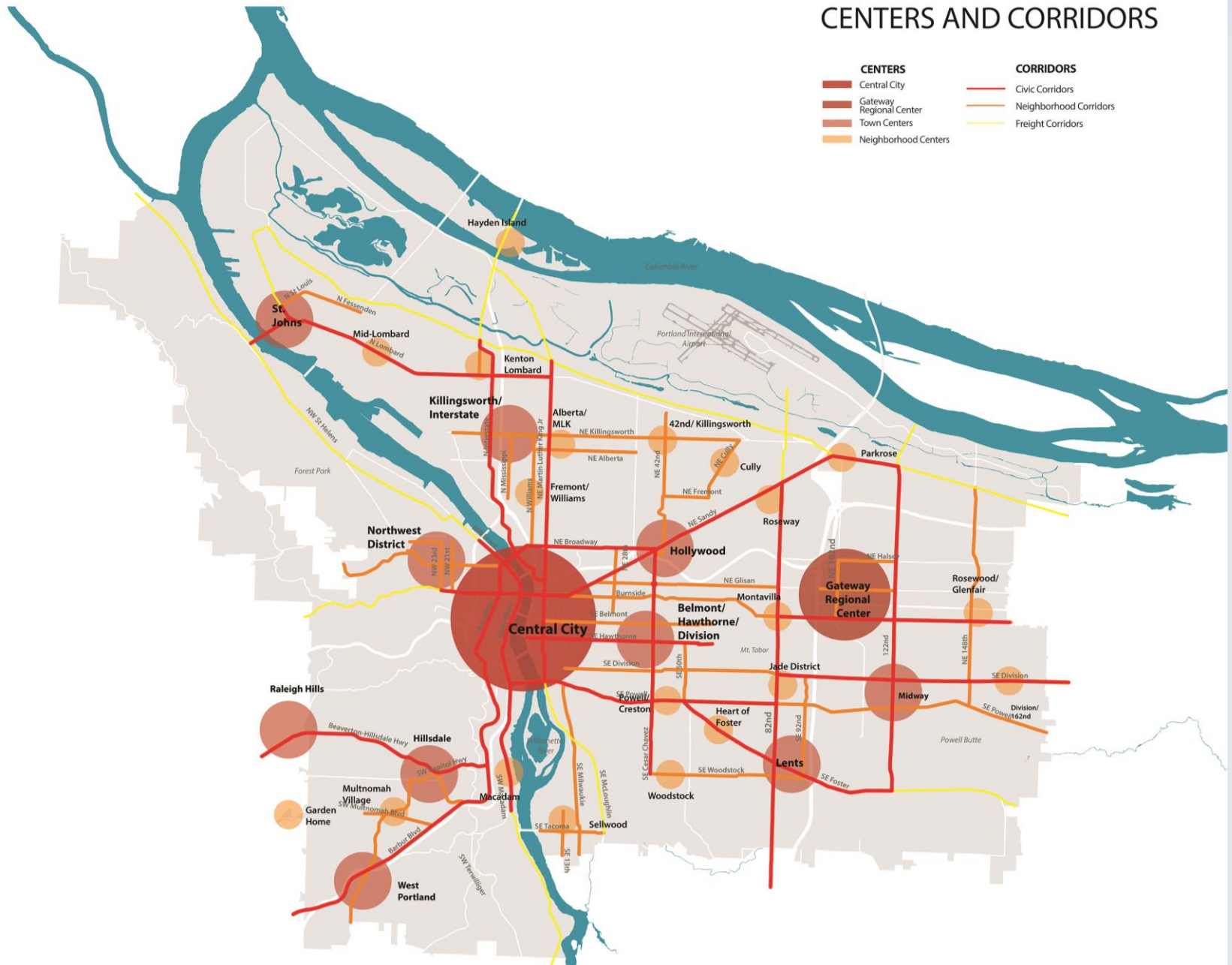
CITY GREENWAYS

-  Existing Trails
-  Proposed Trails
-  Enhanced Greenway Corridors
-  Heritage Parkways
-  Parks & Open Spaces



CENTERS AND CORRIDORS

- | CENTERS | CORRIDORS |
|-------------------------|------------------------|
| Central City | Civic Corridors |
| Gateway Regional Center | Neighborhood Corridors |
| Town Centers | Freight Corridors |
| Neighborhood Centers | |

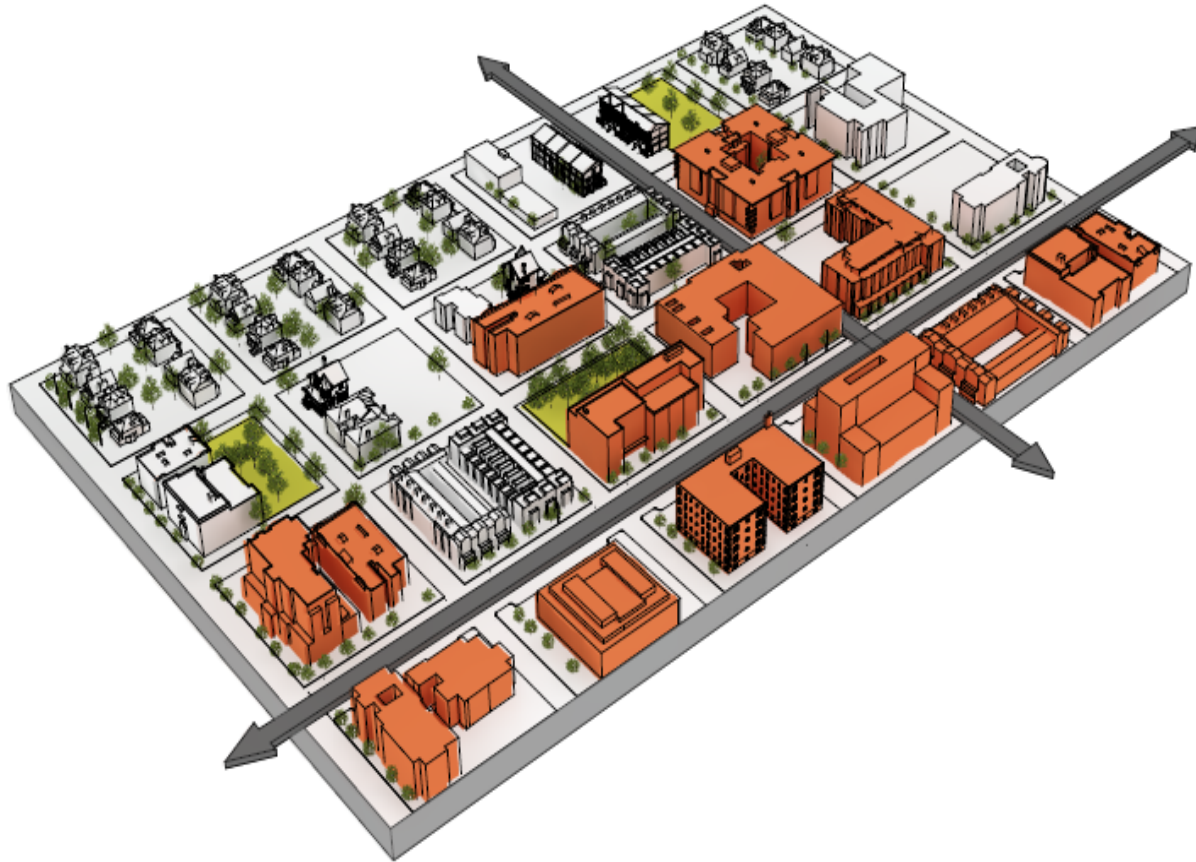


NEIGHBORHOOD CENTER



HOUSING	3,500 units
JOBS	Primarily retail/ service
BUILDING SCALE	Up to 4 stories

TOWN CENTER



HOUSING	7,000 units
JOBS	Diverse employment/ institutions
BUILDING SCALE	Up to 5-7 stories

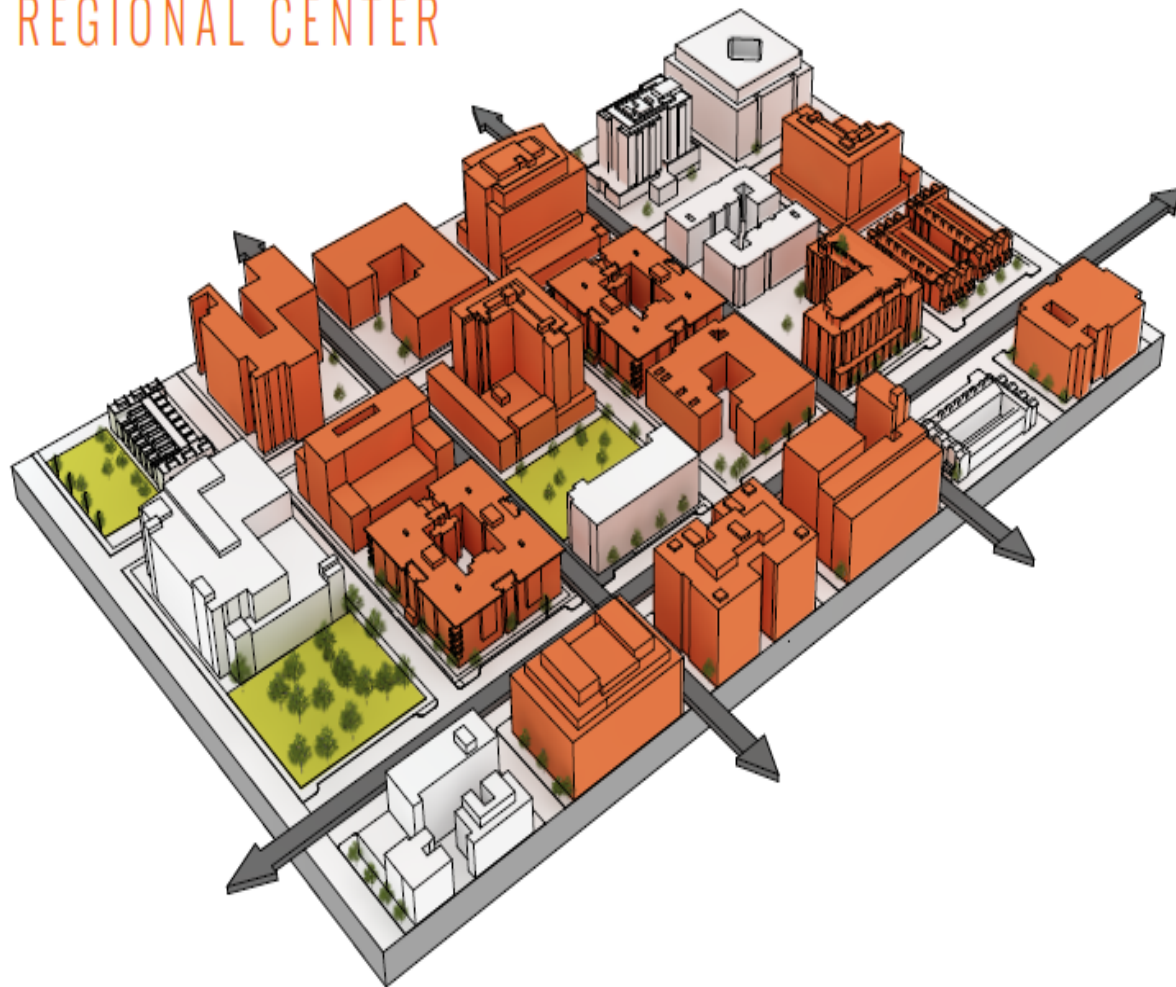


Corridor



New Development

REGIONAL CENTER



HOUSING	23,000 units
JOBS	Employment hub for East Portland (capacity for 23,000 jobs)
BUILDING SCALE	Up to 5-12 stories

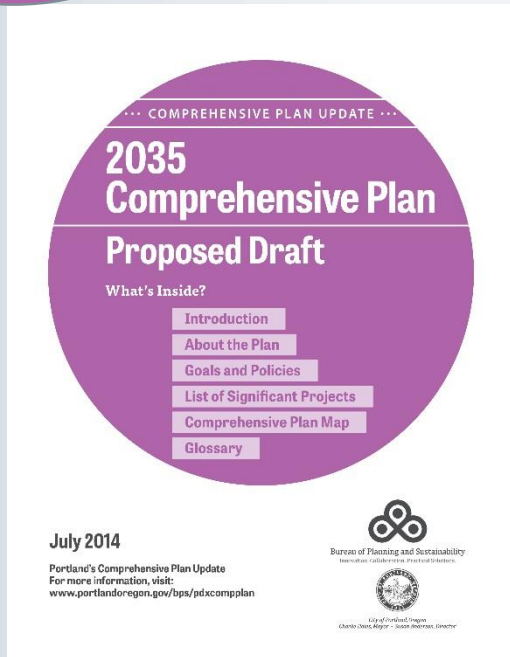
CENTRAL CITY



HOUSING	67,000 units
JOBS	Regional employment hub (capacity for 248,000 jobs)
BUILDING SCALE	Up to 30+

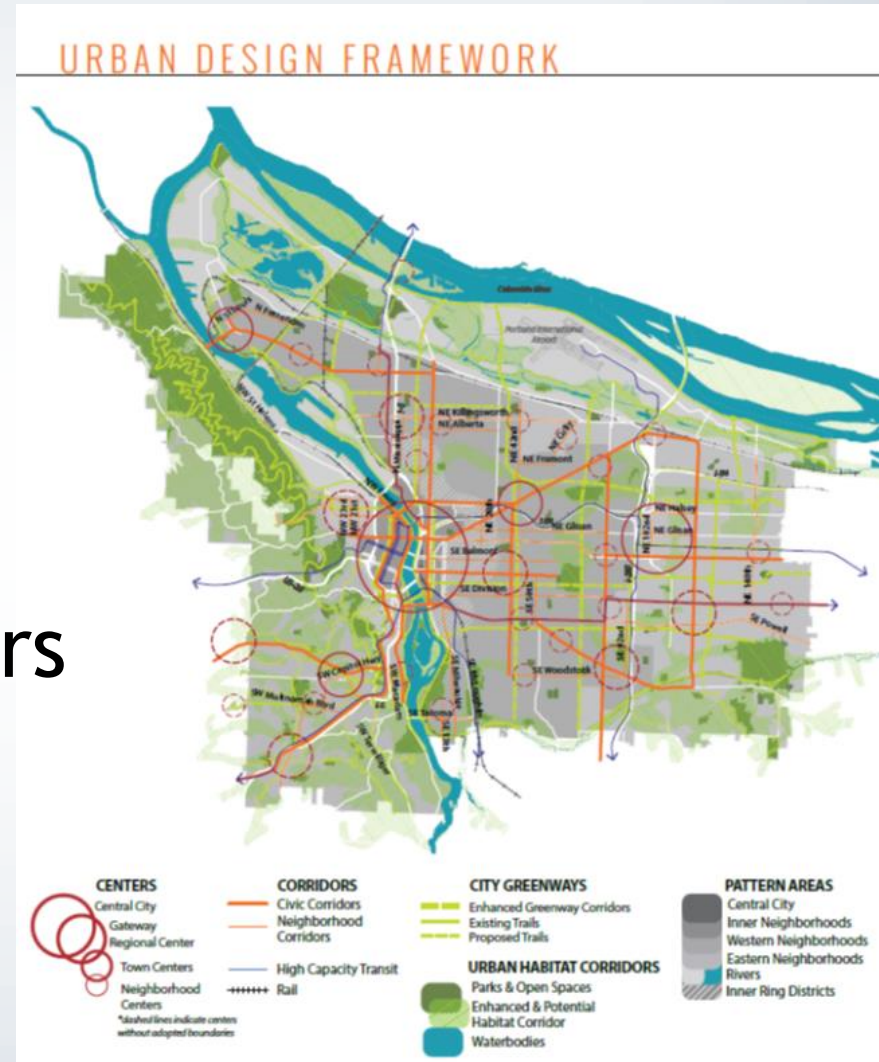
Goals and Policies

1. Guiding Principles
2. Community Involvement
3. Urban Form
4. Design and Development
5. Housing
6. Economic Development
7. Environment and Watershed Health
8. Public Facilities
9. Transportation
10. Administration



Urban Form Policies – Chapter 3

- Centers
- Corridors
- Transit Station Areas
- City Greenways
- Urban Habitat Corridors
- Pattern Areas

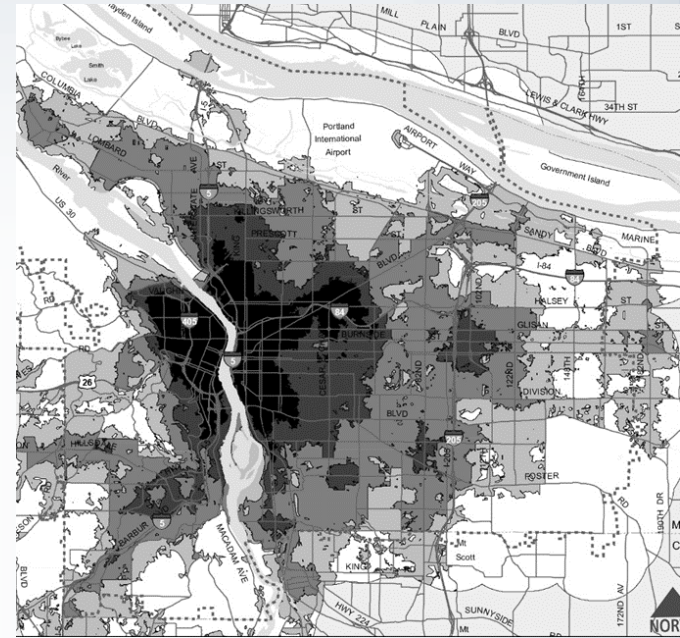


Design & Development Policies – Chapter 4

- Residential Areas
- Centers and Corridors
- Transitions
- Scenic Resources
- Historic and Cultural Resources, Public Art
- Resource Efficient Development
- Designing with nature, hazard resilience
- Healthy Food

Other Related Policies

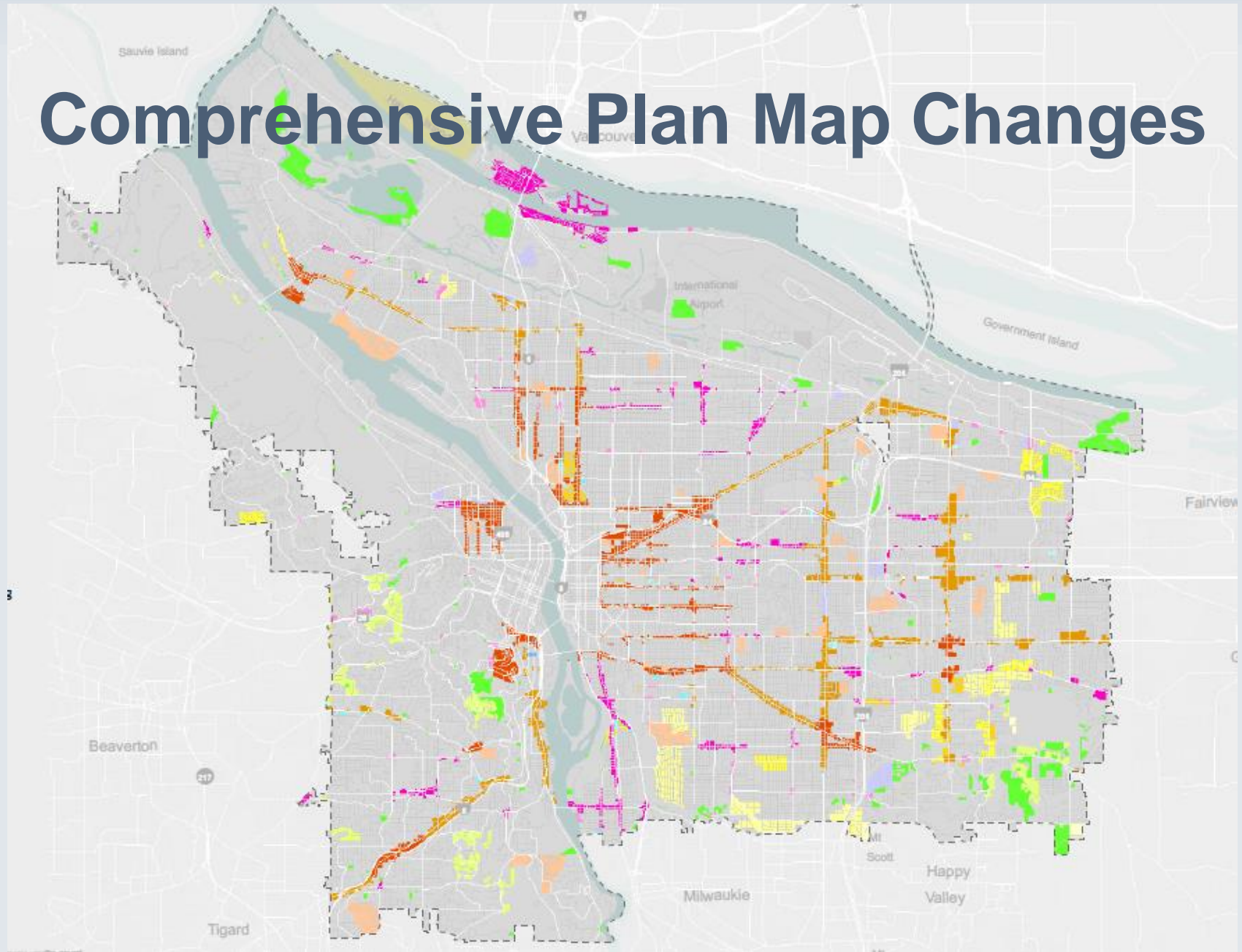
- Housing (Chapter 5) - focusing housing opportunities in service-rich areas, centers
- Economic Development (Chapter 6) - policies for employment areas, neighborhood business districts, centers
- Transportation (Chapter 9) - streets as public spaces



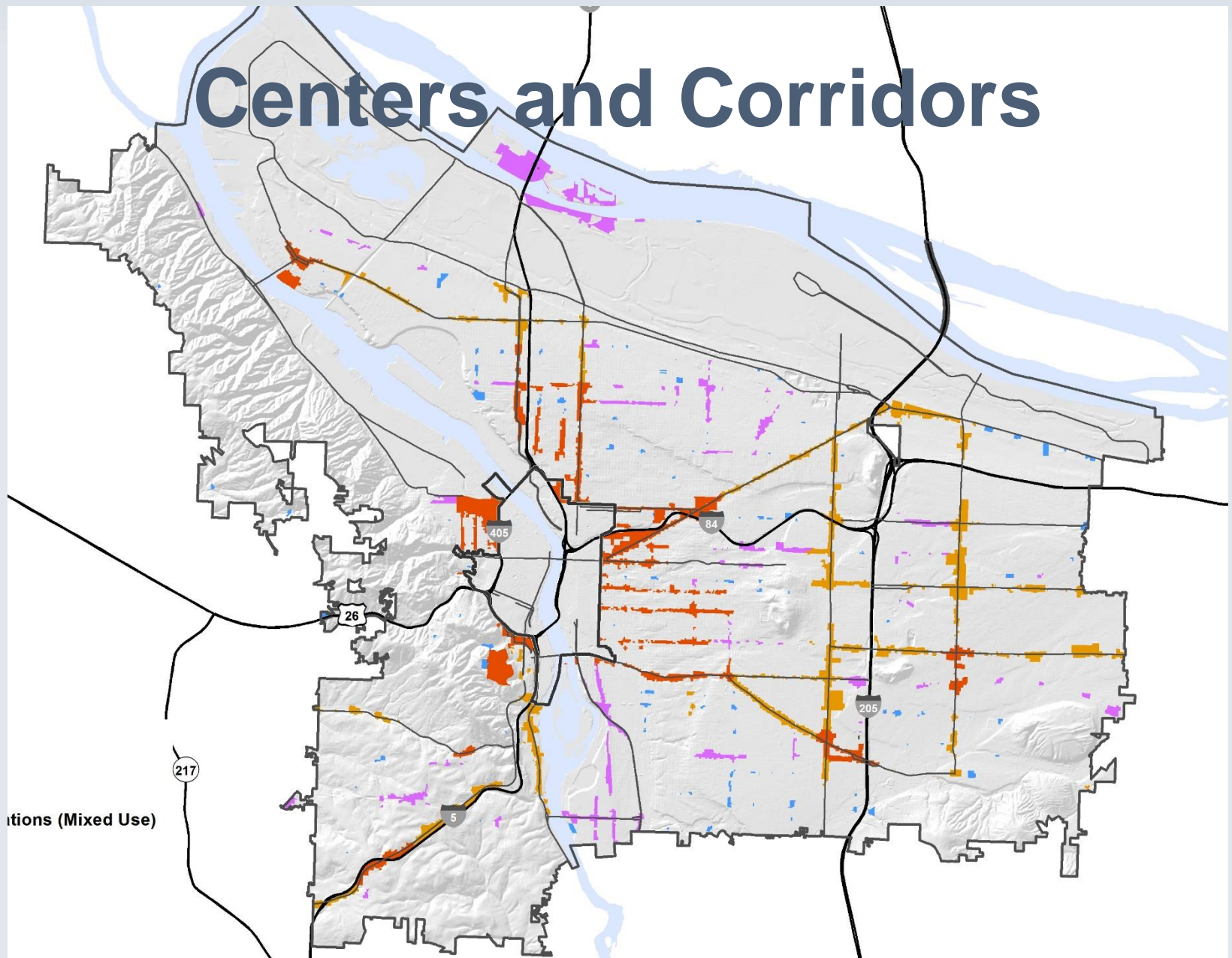
Comprehensive Plan Map

- Centers and Corridors
- Jobs
- Risks and Service Gaps
 - Hard to serve hazardous areas
 - East Portland, David Douglas schools
- Neighborhoods, Parks and Open Space

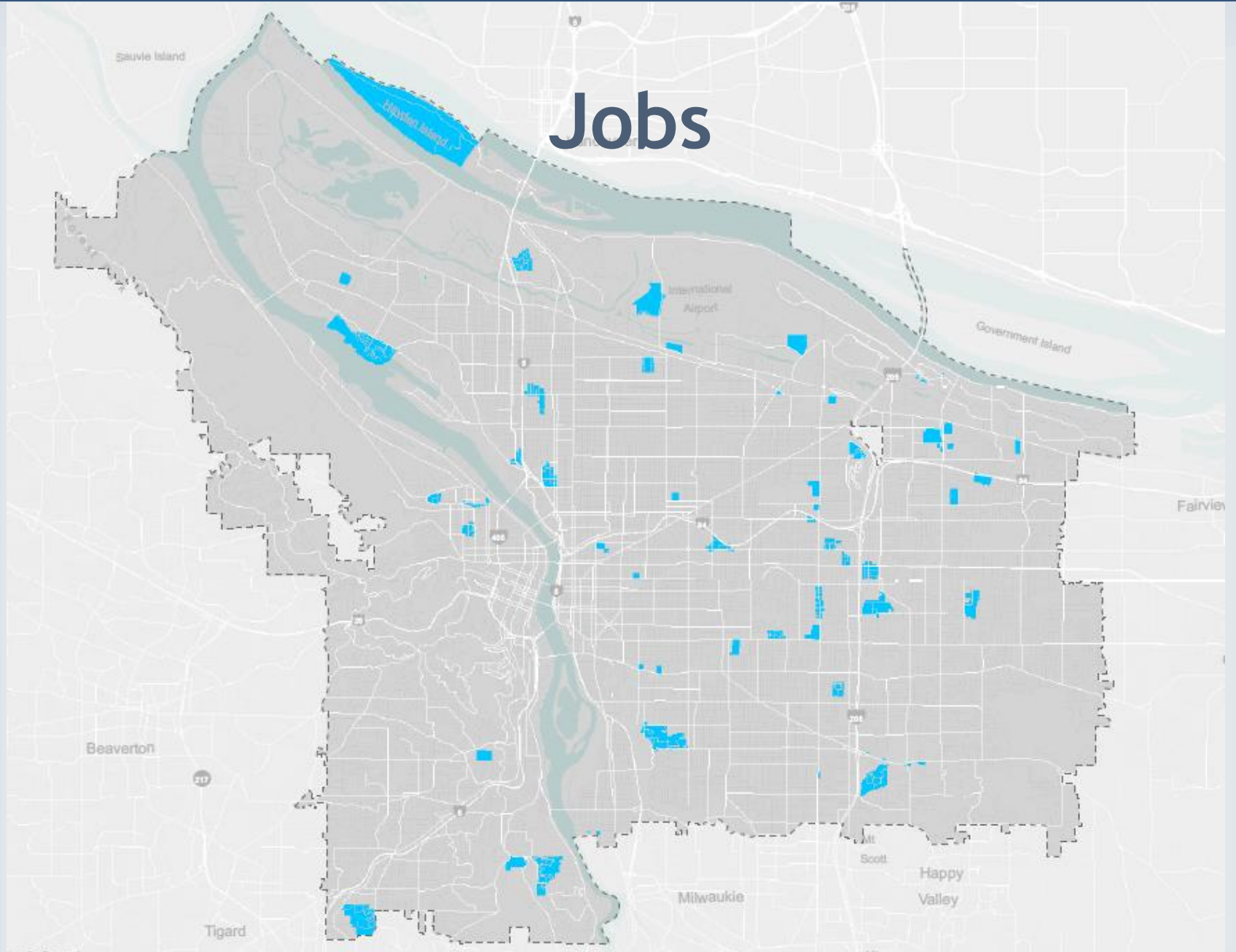
Comprehensive Plan Map Changes



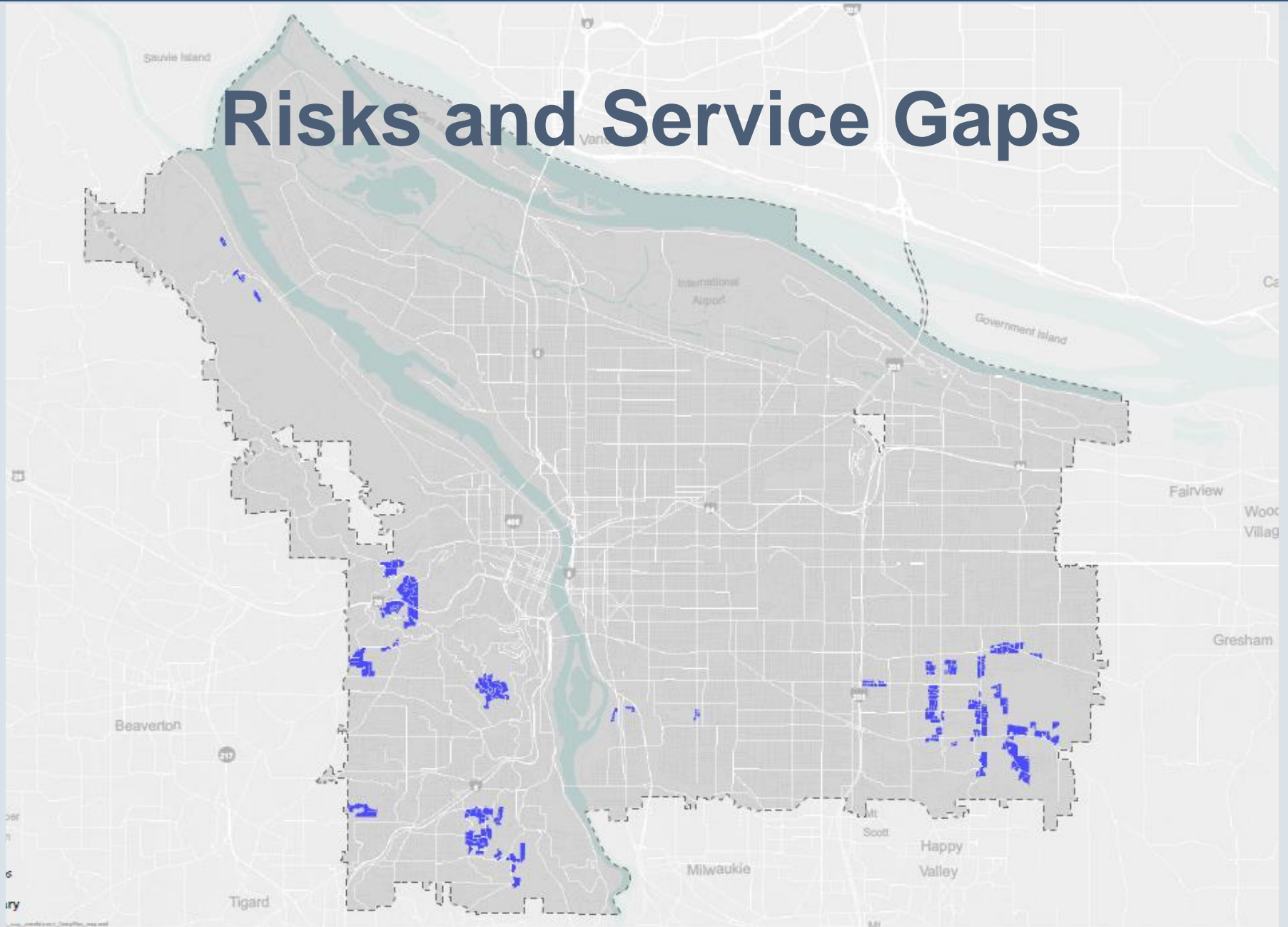
Centers and Corridors



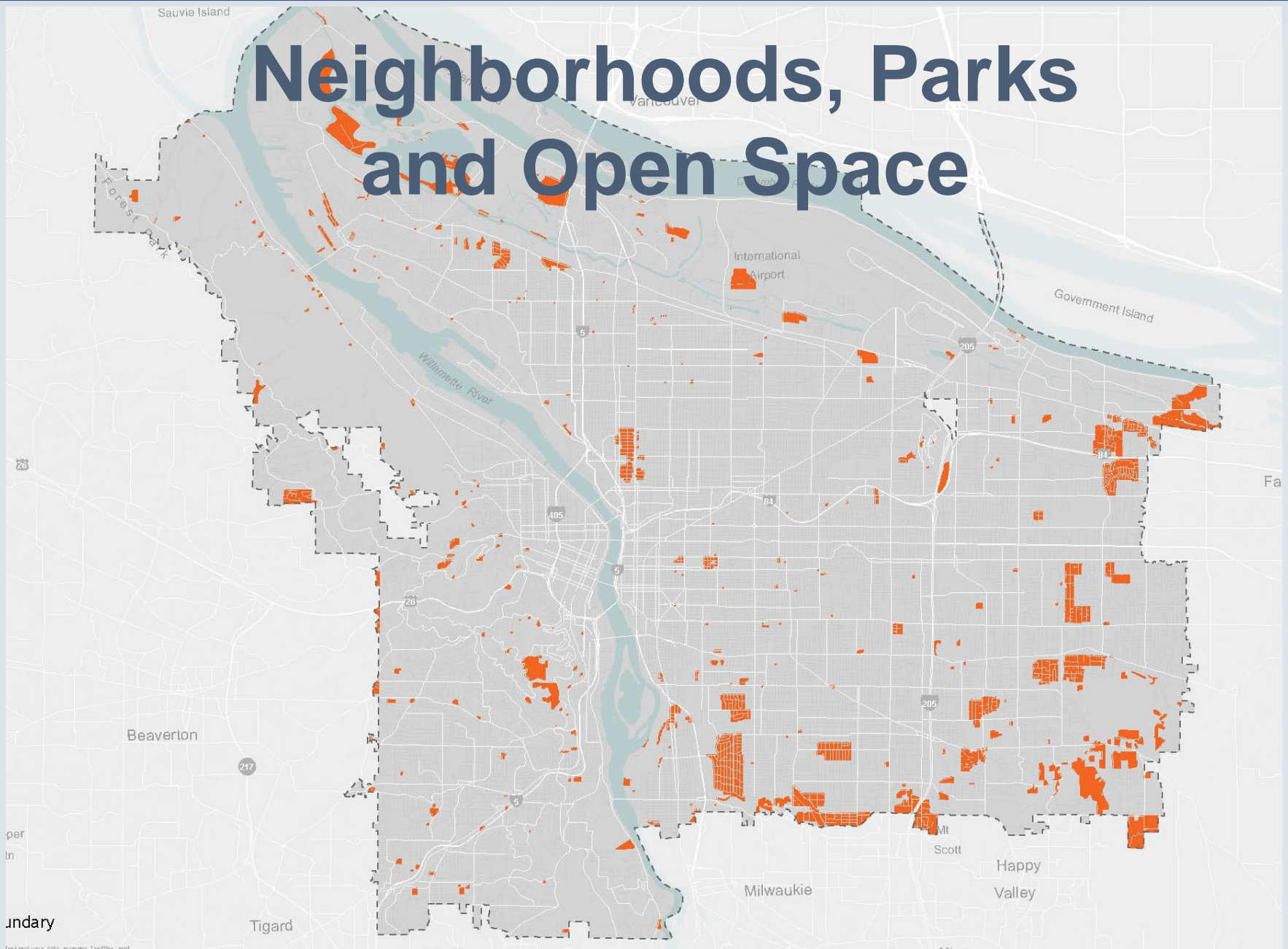
Jobs



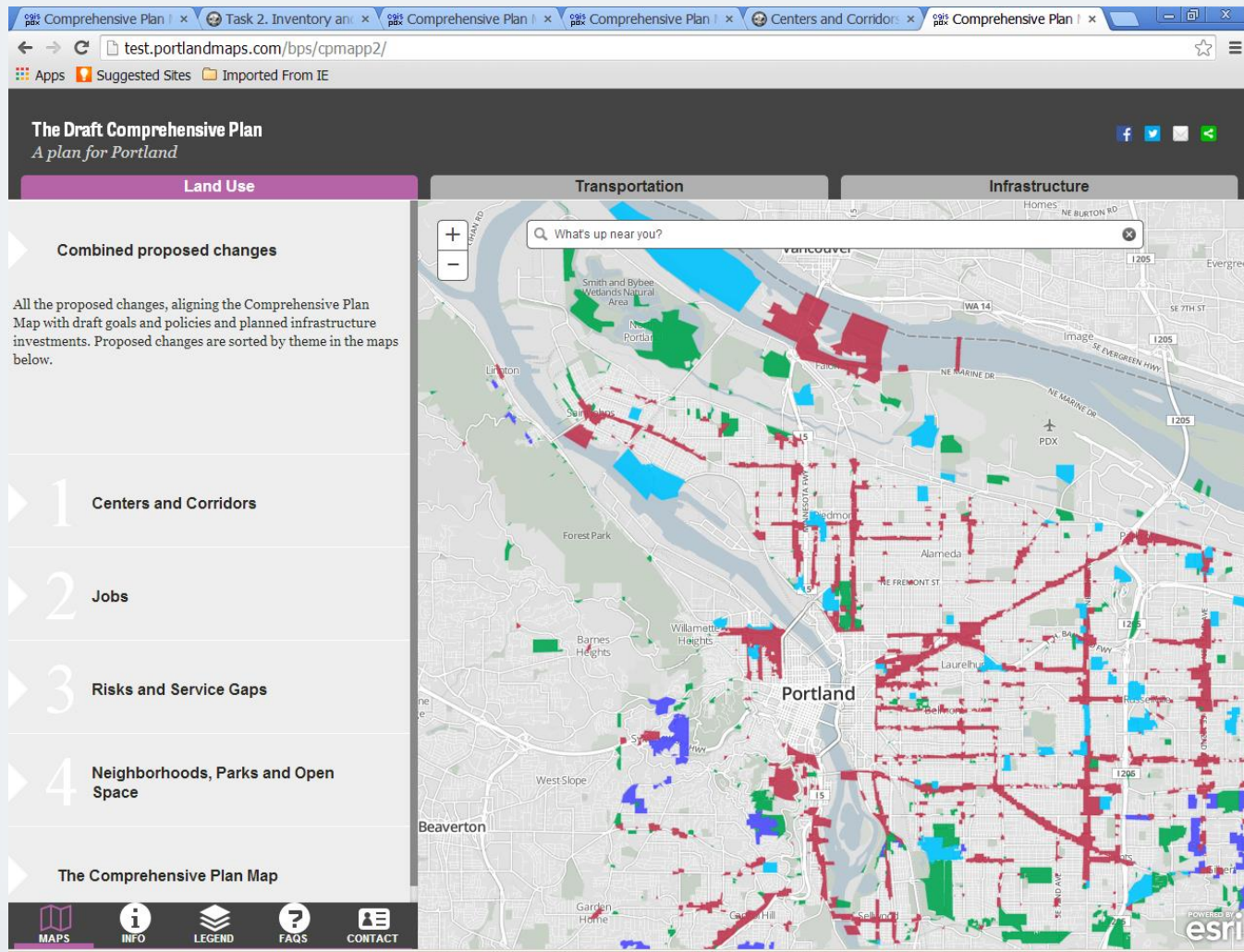
Risks and Service Gaps

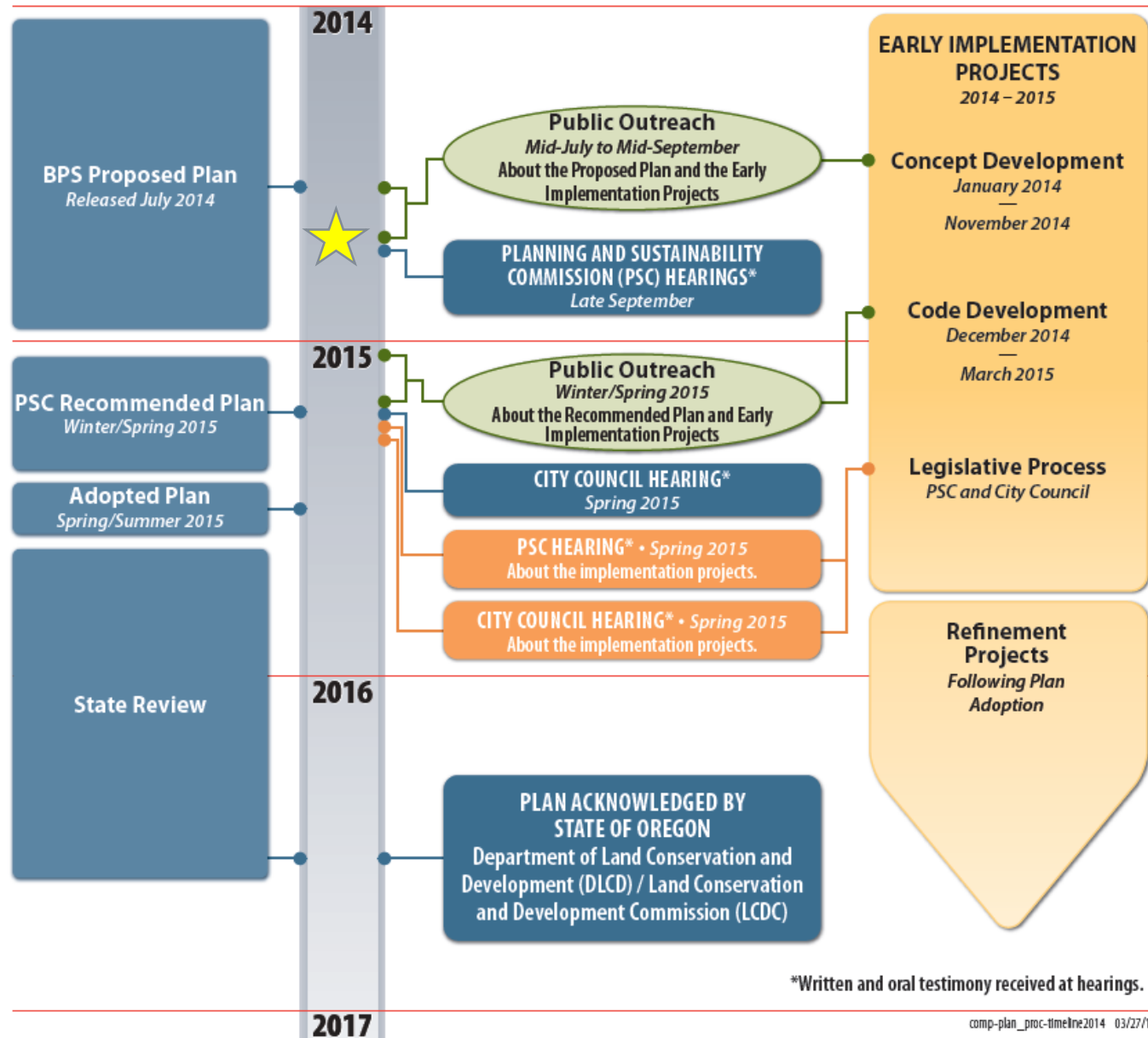


Neighborhoods, Parks and Open Space



The Map App





Input

- Through the Map App:
www.portlandoregon.gov/bps/mapapp
(the maps and projects)
- By email: psc@portlandoregon.gov with
“Comprehensive Plan Testimony” in the subject
line
- By mail: Send a letter to the PSC, 1900 SW 4th
Avenue, Portland, OR 97201-5380

Planning & Sustainability Commission Hearings

- September 23, 2014 (Policy)
- October 14, 2014 (Maps)
- October 28, 2014 (Maps)
- November 4, 2014 (CSP, TSP Part 1)
- November – January (Work Sessions)

Some Highlights

- **Growth package** – services, civic amenities, design tools
- **Pattern areas** – one size does not fit all
- **Equity** – expand affordable housing opportunities near Central City
- **City greenways network**



Implementation

- Mixed Use Zones Project
- Historic Resources Inventory Update
- Central City Design Guidelines

Questions and Comments

- Website:

www.portlandoregon.gov/bps/pdxcompplan