

Transportation System Plan Presentation

Planning and Sustainability Commission Briefing

September 2014

WE KEEP PORTLAND *MOVING.*



Comprehensive Plan

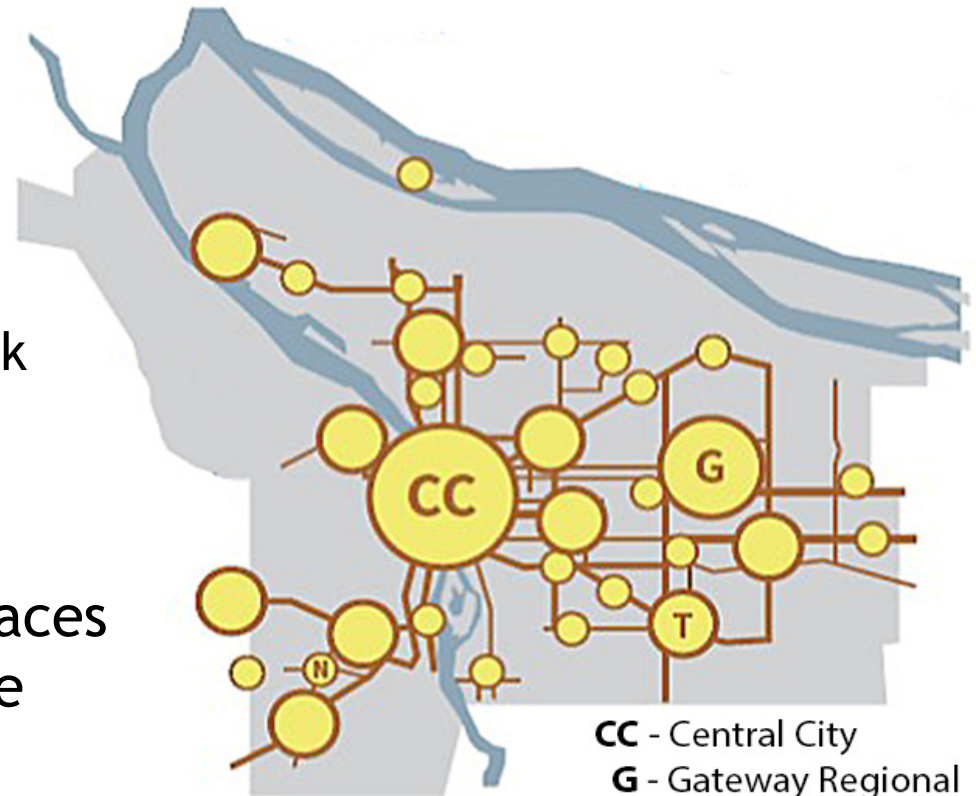
Transportation Systems Plan

Our Streets



Comprehensive Plan Context

- Comp Plan defines the land use direction for the City
 - Where should we grow?
 - What do we want the City to look like in 20 years?
- Transportation System Plan & Investment to support thriving places and efficient movement of people and goods



CC - Central City
G - Gateway Regional Center
TC - Town Center
TC - Neighborhood Center



Smart TSP

- **Growth is coming!**
 - 120,000 new households by 2035
 - 150,000 new commute trips per day
- Roadway system can't support growth with current mode split
- What are we going to do?



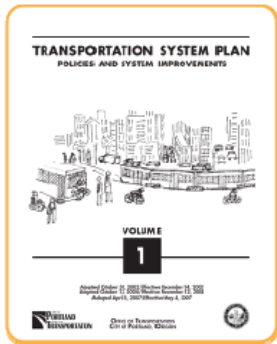
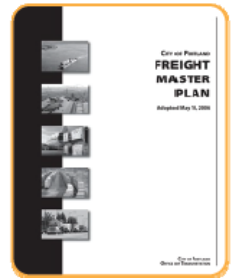
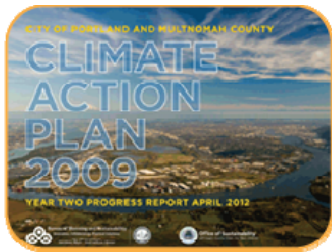
Smart TSP

We need a Balanced System

- More safe choices for short trips
- Saving space for longer trips and trips that must use vehicles
- A system that works for Everyone, including:
 - Commuters
 - Parents
 - Shippers
 - Disabled residents
 - Diverse populations

Must Drive? We are saving space for you!





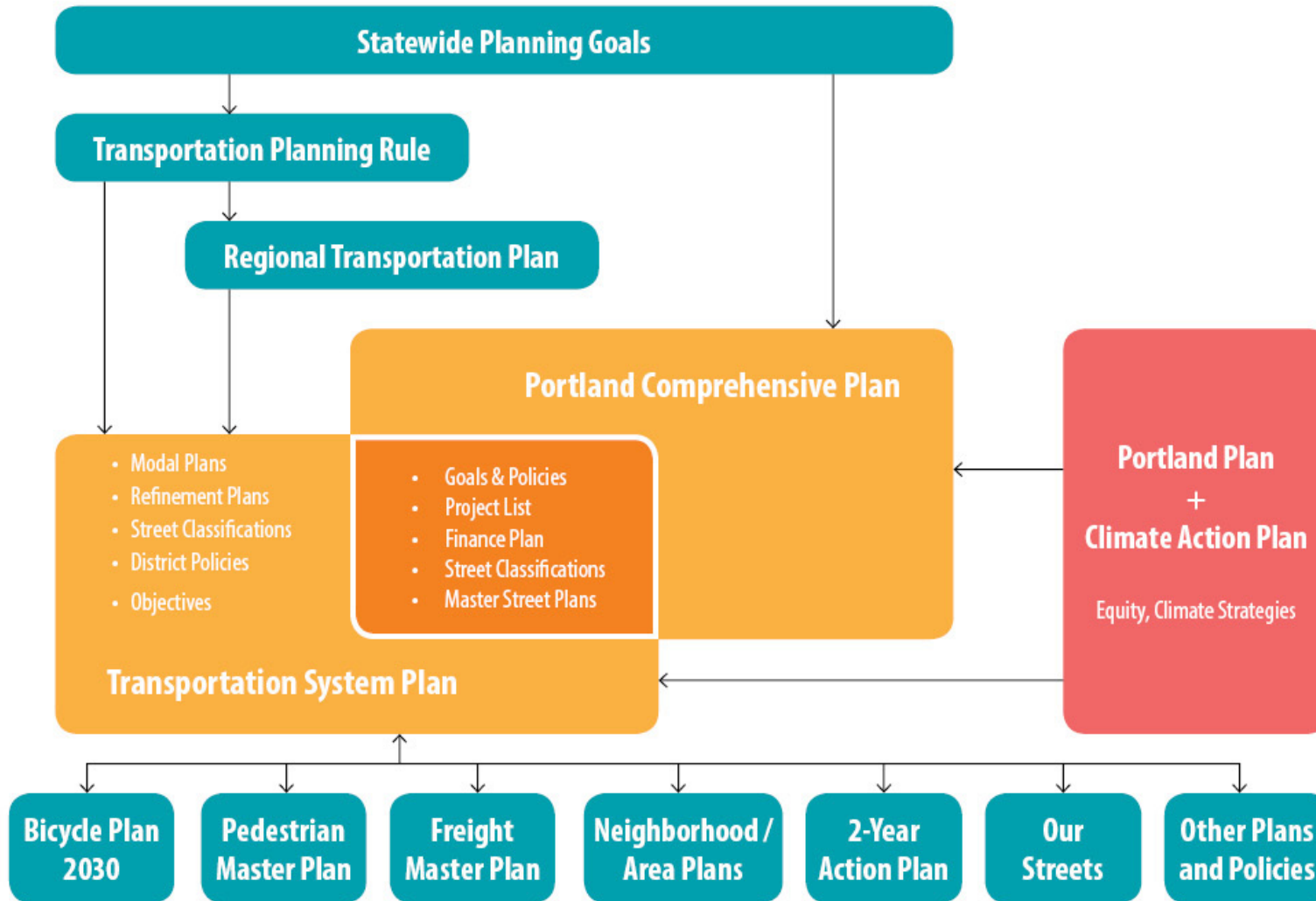
Transportation Planning Rule

The Seven Outcomes:

- 1 Improve access to daily needs, such as jobs, schools, grocery stores, health care
- 2 Reduce/eliminate transportation fatalities and injuries
- 3 Improve health by increasing walking and bicycling
- 4 Increase economic benefits, such as access to family wage jobs and freight access
- 5 Ensure disadvantaged communities benefit as much or more than non-disadvantaged communities
- 6 Reduce global warming pollution from transportation
- 7 Prioritize the most cost-effective projects



TSP : RELATIONSHIP TO OTHER PLANS



2015

- Modal Plans
- Refinement Plans
- Street Classifications
- District Policies
- Objectives

Transportation System Plan

Portland Comprehensive Plan

- Goals & Policies
- Project List
- Finance Plan
- Street Classifications
- Master Street Plans

TODAY



Chapters 3 & 4

Urban Form/Design & Development

1. Land Use and Transportation
2. *Civic corridors*: Concept addressed.
3. Greenways.
4. Patten areas.
5. One Size does not fit all.

Chapter 6

Economic Development

1. Stronger Land Use and Transportation Focus
2. Investments and policies to meet industrial and land use goals.

Chapter 8

Public Facilities & Services

1. *Rights-of-Way*: Multiple uses of the right-of-way. New flexible design policy supports local context design.
2. *Street Design*: “Design for All” ages/abilities/modes of transportation, local context along street length.
3. *Coordination*
4. *Funding*
5. *Asset Management*

Chapter 9

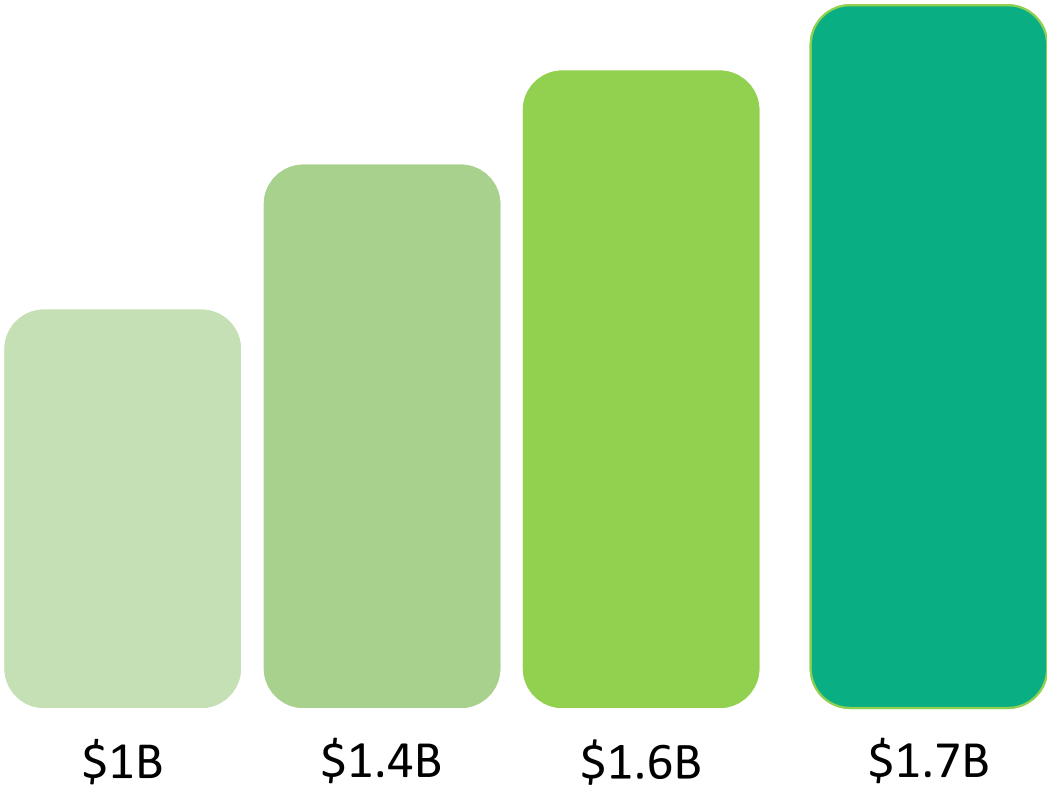
Transportation

1. *Six Goals*: function, quality of life, equity, health, prosperity, and safety.
2. *Modal Policies*: Uniform pedestrian, bicycle, and public transportation policies focus on trip destinations. Plus new automobile policy.
3. *Modal Priorities*: New “transportation hierarchy” supporting multimodal transportation system.
4. *Funding*: New policy.
5. *LOS*: New policy supporting multimodal LOS standards.
6. *Parking*: Revised policy address livability, safety, business district vitality, VMT reduction, air quality.
7. *Transportation Affordability*: New policy.

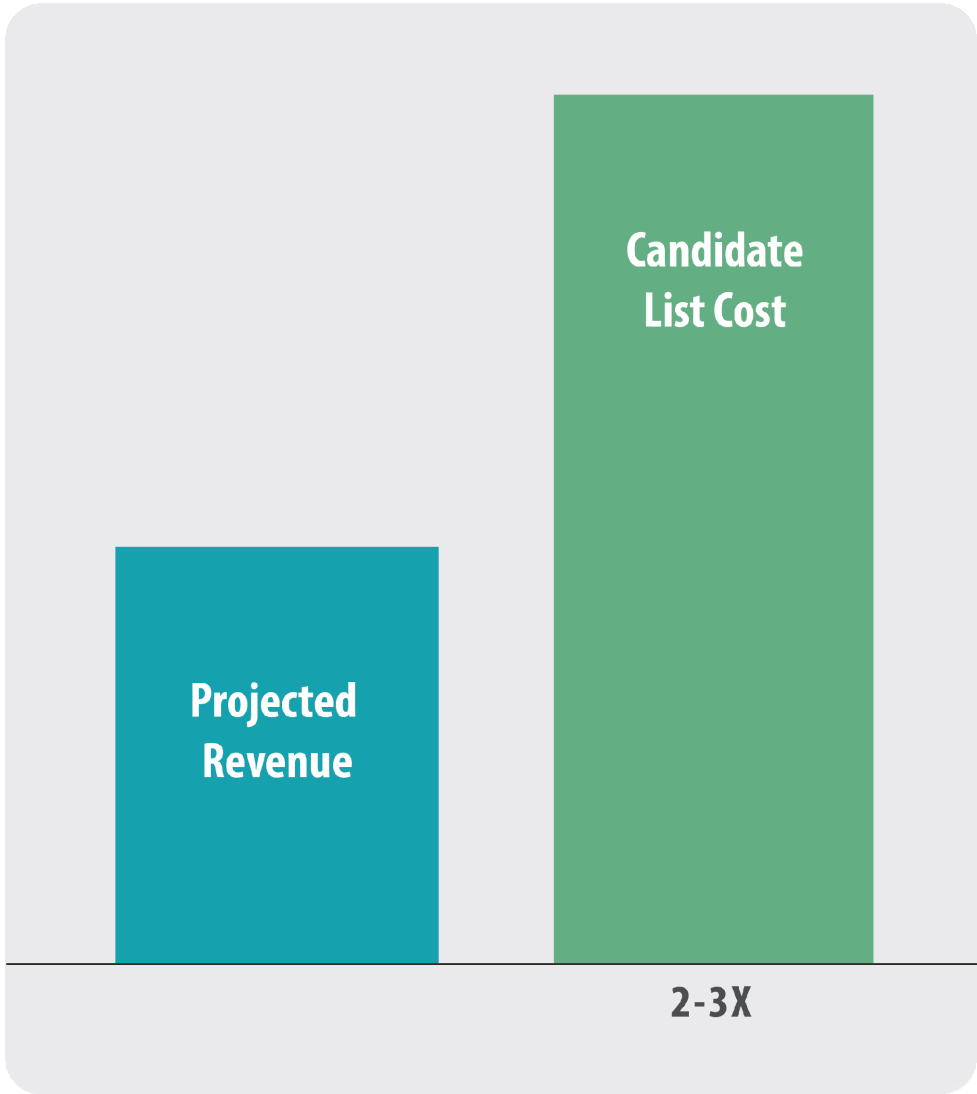
Policy Changes



Financial Plan: Revenue Scenarios



Project Cost/Funding Gap



Program Categories

Programs

Pedestrian Network Completion

Safe Routes to School

Bikeway Network Completion

Transit Priority

Neighborhood Greenways

Freight Priority

Livable Streets

Transportation Demand Management (TDM)

Accessible Streets

Transportation System Management (TSM)

High Crash Corridors

Parking Management



Maintenance & Operations Categories

Maintenance & Operations

Paving Preservation

Traffic Investigations

Bridges and Overpasses

Street Lighting

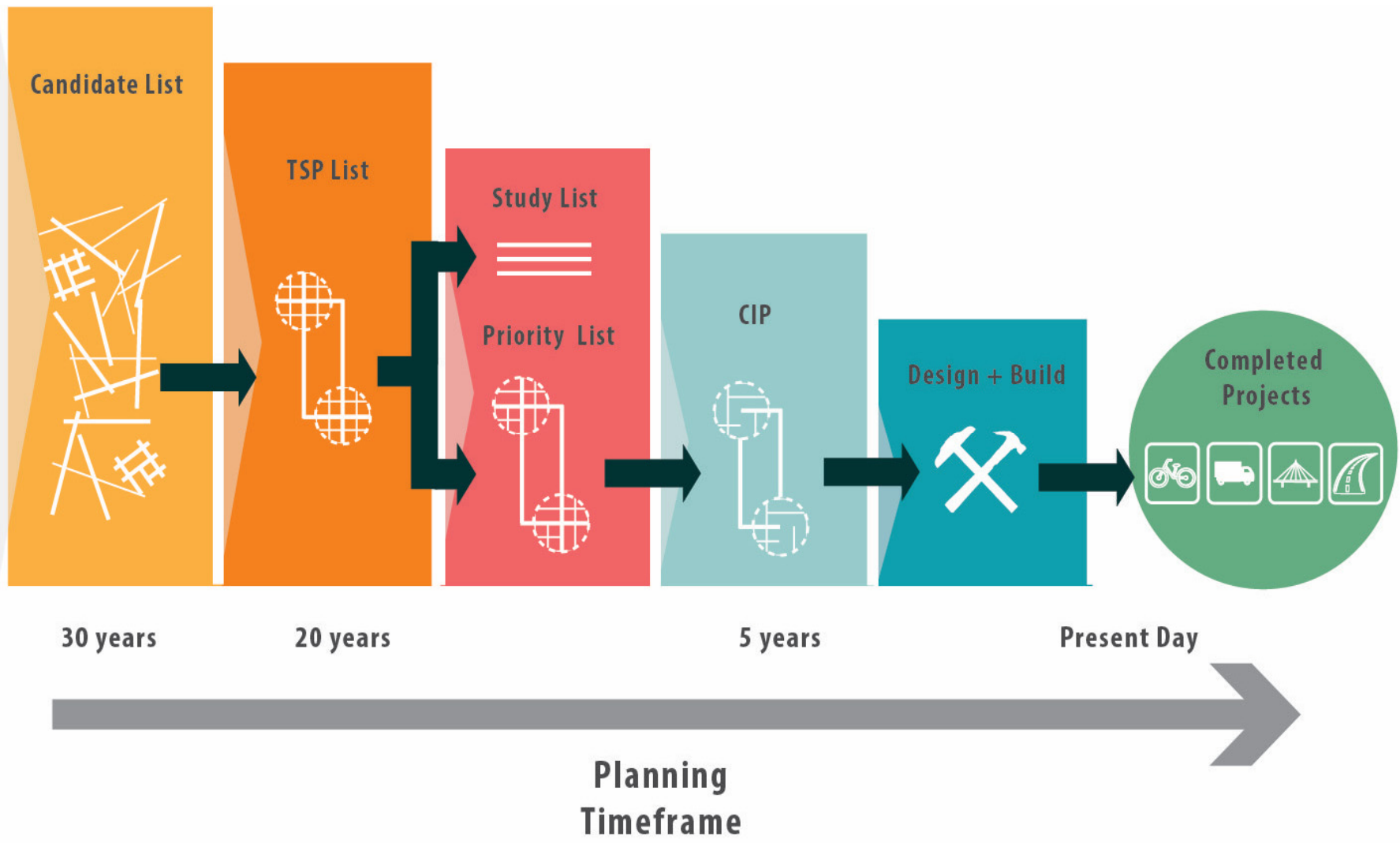
Signal Reconstruction

Signage

Signal Communications

Striping





THE MAGNIFICENT SEVEN

They fought like seven hundred



Safety Access Cost Equity Health Economics
Environment



Magnificent Seven

The Seven Outcomes:

- 1** Improve access to daily needs, such as jobs, schools, grocery stores, health care
- 2** Reduce/eliminate transportation fatalities and injuries
- 3** Improve health by increasing walking and bicycling
- 4** Increase economic benefits, such as access to family wage jobs and freight access
- 5** Ensure disadvantaged communities benefit as much or more than non-disadvantaged communities
- 6** Reduce global warming pollution from transportation
- 7** Prioritize the most cost-effective projects



TSP Project/Program Tiers

Financially
Constrained

Unconstrained

Dedicated Funds
Studies
Unresolved
Out





EQUITY

**JOB
ACCESS**

HEALTH

ACCESS

SAFETY

CLIMATE



What is Our Schedule for the Comprehensive Plan?

September 9th
Briefing

- Process Overview
- Policy Shifts
- Programs List
- Evaluation Criteria

October 13th
Release

- Financially Unconstrained Updated Candidate Project List

November 4th
PSC Hearing: CSP & TSP

- Policy Review
- Candidate List Comments
- Revised Revenue Forecast

February 24th
PSC Hearing: TSP Components of the Comp Plan

- Policy Review
- Sorted Prioritized Projects/Program List
- Financial Plan



Next Steps 2015



Other TSP Outreach Initiatives

September

9th - BAC (Projects)
10th - Open House
16th - Open House
16th - PAC (Policy + Process)
18th - Open House
23rd - Public Hearing
25th - TEG

October

14th - BAC (Policy & Process)
14th - Portland Business
Alliance
21st - PAC (Projects)
30th - TEG

November/ December

TBD - Joint Modal
Committee Meeting (2)
TBD - Targeted Stakeholder
Meetings (4)
Nov. 18th - TEG
Dec. 12th - TEG



Thank You



For more information please contact:

Courtney Duke - Policy/Process
Courtney.Duke@portlandoregon.gov
503-823-7265

Peter Hurley - Projects/Programs/Performance
Peter.T.Hurley@portlandoregon.gov
503-823-5007

