

# CONNECTING THE ODOTs

DESIGN RECOMMENDATIONS FOR THE FUTURE OF

SE POWELL BLVD



Catlin Gabel  
forming bold spaces



# WHO WE ARE



## People Learning Across City Environments

- Twenty one high school students
- Six different schools
- Four week program emphasizing civic engagement and urban planning
- Focused on equity, functionality, and aesthetics

### Mission Statement:

*To empower youth to be engaged citizens for positive change through real-world problem solving, innovative education, authentic community interactions, and hands-on leadership experience.*





- 



# OPPORTUNITY STATEMENT



- Our focus was the re-utilization of the ODOT-owned parcels along the south side of Powell
- Keeping in mind the needs and wants of the community from 50th - 82nd
- Assisting the implementation of high capacity transit



# THE PROJECT: HISTORY



- Vital part of Portland
- Used for Transportation
- Original Electric Streetcar



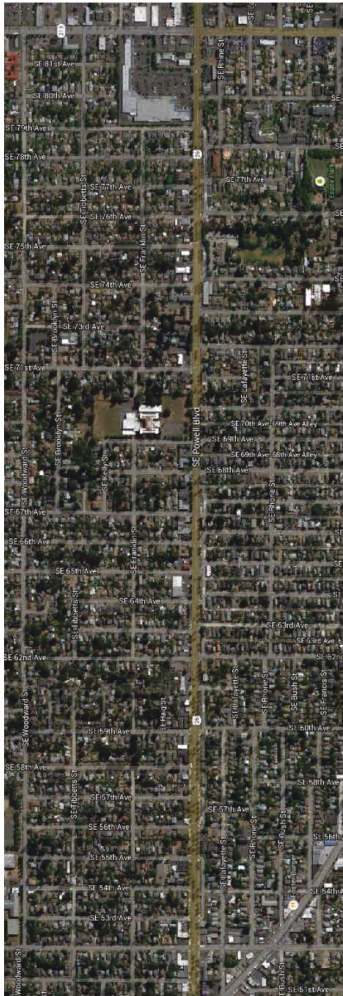
# THE PROJECT: CURRENT CONDITIONS



- Provides transportation
- Poor maintenance
- ODOT Parcels
- Lack of pedestrian safety







# METHODOLOGY: CASE STUDIES



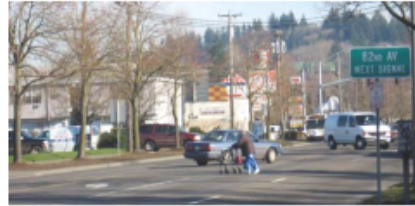
- High capacity transit systems and stops
- Examples of redesigning parking lots into parks
- Gardens
- Small libraries
- Art



# METHODOLOGY: LITERATURE AND DATA



- Powell Streetscape Plan
- Portland Plan
- Climate Action Plan
- Powell Demographics





# METHODOLOGY: INTERVIEWS



- Professionals and experts
  - Bus Rapid Transit
  - Urban renewal
  - Empty lot utilization
- Business owners on Powell





# INTERVIEWS



- Businesses interviewed:
  - Chair Outlet
  - 7 Dee's Nursery
  - Plaid Pantry



# METHODOLOGY: SURVEYS



- 160 surveys
- Conducted in Spanish, English, and Mandarin
- Posted on social media
- Focused largely on the surrounding communities and neighborhoods

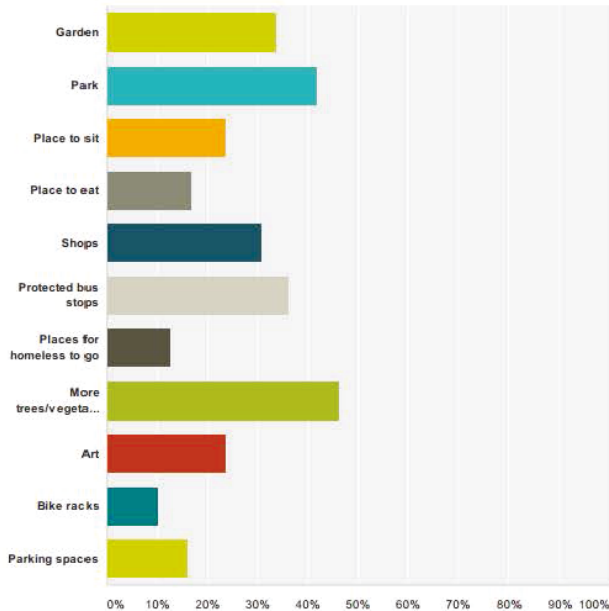


# METHODOLOGY: SURVEYS



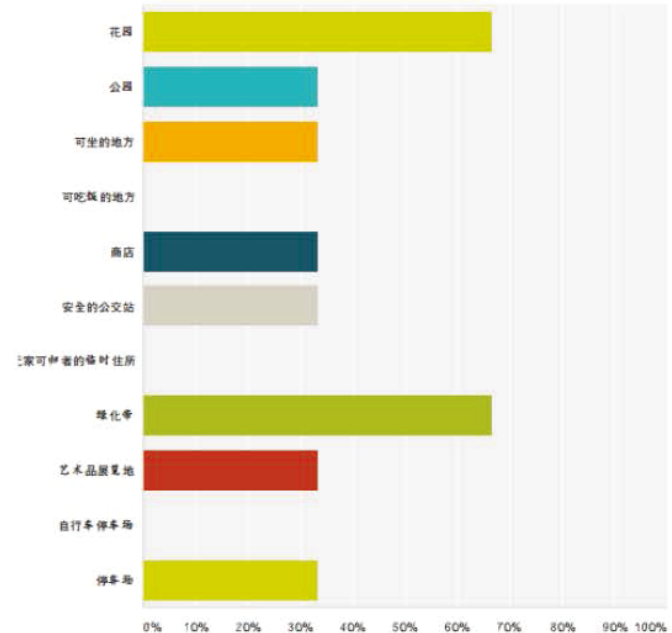
**Q12 Pick the top three of these options that you think would benefit the community most if placed in the ODOT parcels**

Answered: 136 Skipped: 21



**Q12 挑选你认为将有利于社区的前三名，如果将在Powell大道的公共停车场变成：**

Answered: 3 Skipped: 2



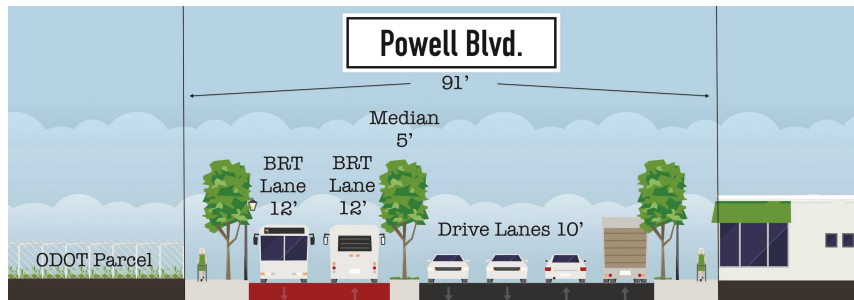
# FINDINGS: TRANSIT STATIONS



- History of Mass Transit
- 54% do not feel safe at night
- 25% do not feel safe during the day
- Portland Plan's goal is 90% of Portlanders having easy access to public transportation

“An aesthetically pleasing, and efficient design are the two most important things when building a stop.”

Tom Schwetz,  
Eugene/Springfield Transit  
Director

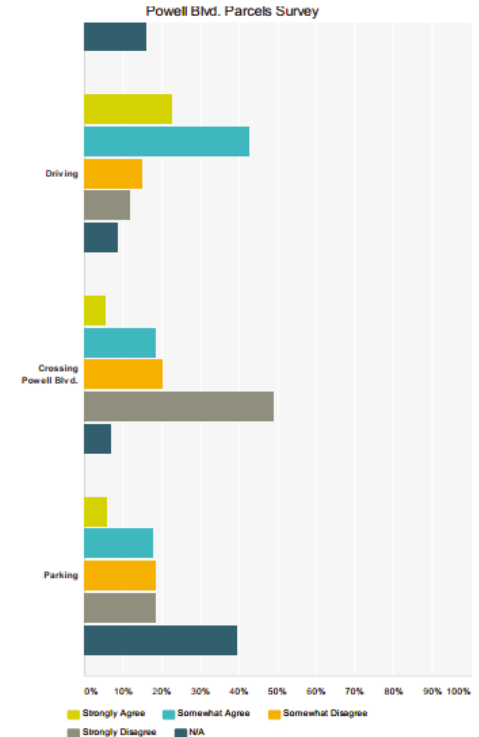




# FINDINGS: PARKING



- Parcels originally built for Park and Ride
- Case study based in New Jersey uses Permeable Pavement and Rain Gardens



# FINDINGS: COMMUNITY GATHERING



- Out of people surveyed
  - 42% answered that a park would be beneficial
  - 34% answered garden
  - 46% marked “green space” as one of their top three choices of designs
  - 24% of people reported wanting places to sit



“Although you are the ones designing it, just getting people excited about it [the project] before it is actually built creates a sense of ownership, which is really important.”

Phillip Auchettl  
RadLab

# CRITERIA

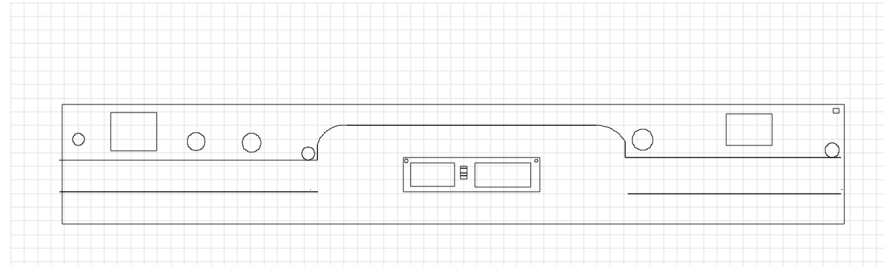


Safety			
Aesthetics			
Functionality			
Multi-purpose			
Eco-friendly			
Equity			
Green Space			





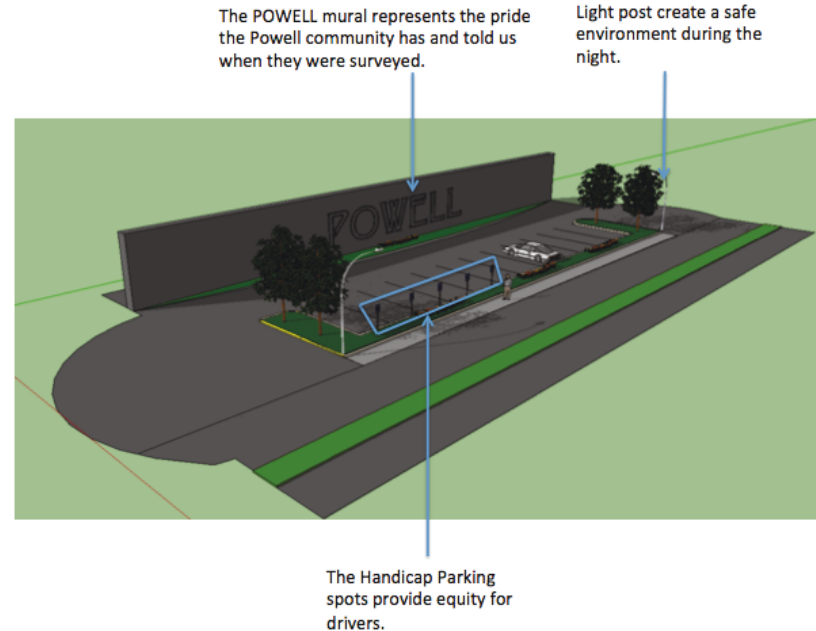
- 



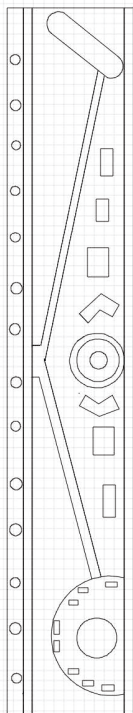
# RECOMMENDATIONS: PARKING



- Lighting
- Mural
- Efficient stormwater drainage
- Permeable pavement
- Rainwater garden



# RECOMMENDATIONS: COMMUNITY GATHERING



The fountain is a sight in the park and creates a peaceful sound.

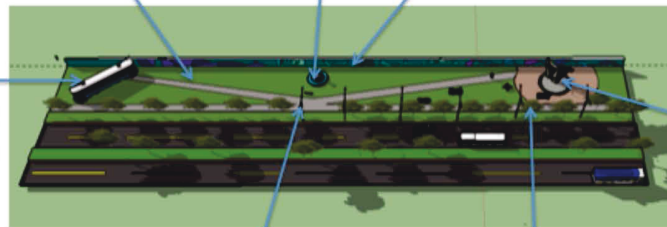
This is a key feature of the park idea, it holds it together with a basic and pleasing layer of grass.



The mural allows the surrounding community to express their diversity through the form of art.



The refurbished street car can be used as many things such as a library or coffee shop.



The lamps provide safety at night



The people of Powell suggested that more trees and vegetation was added, therefore there is trees used as a soft barrier.



The art installation serves as a common place for people to meet at.

# NEXT STEPS



- Connecting with community
- Community meetings
  - inform the community on the process
  - decide on placement of parcels
  - discuss the community mural idea
- Find other ways to increase safety of pedestrians and bicyclists



THANK YOU!



ANY QUESTIONS?