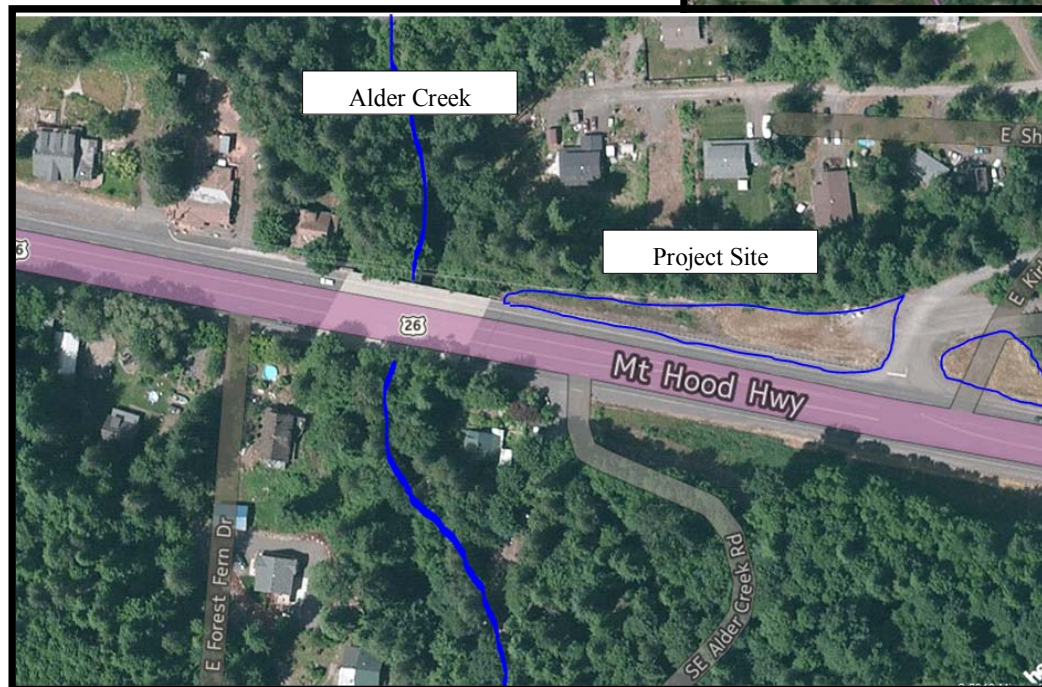
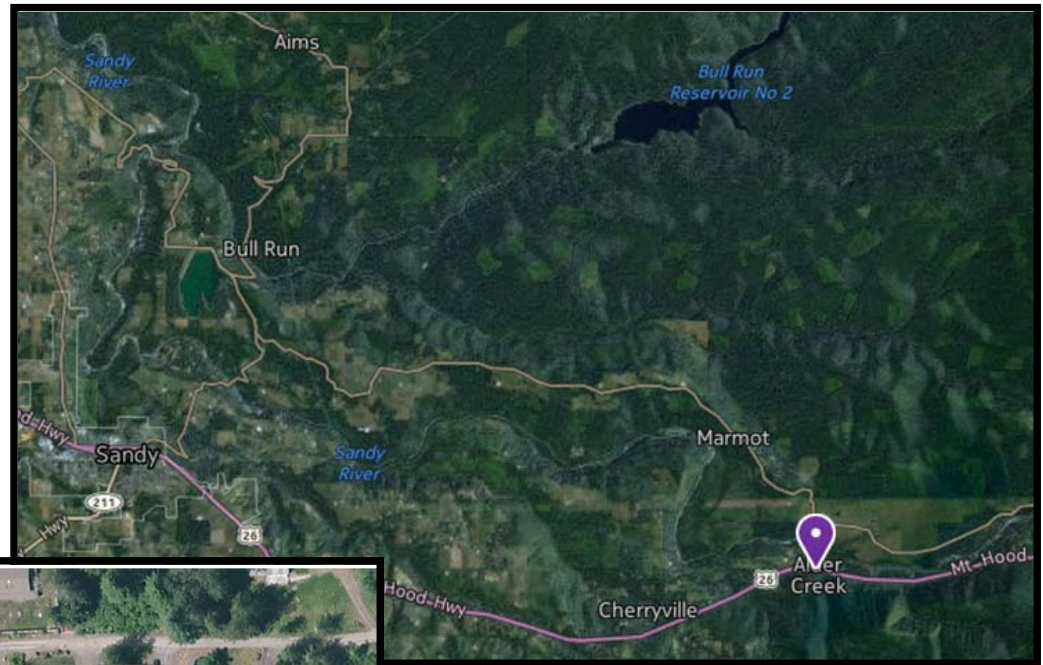


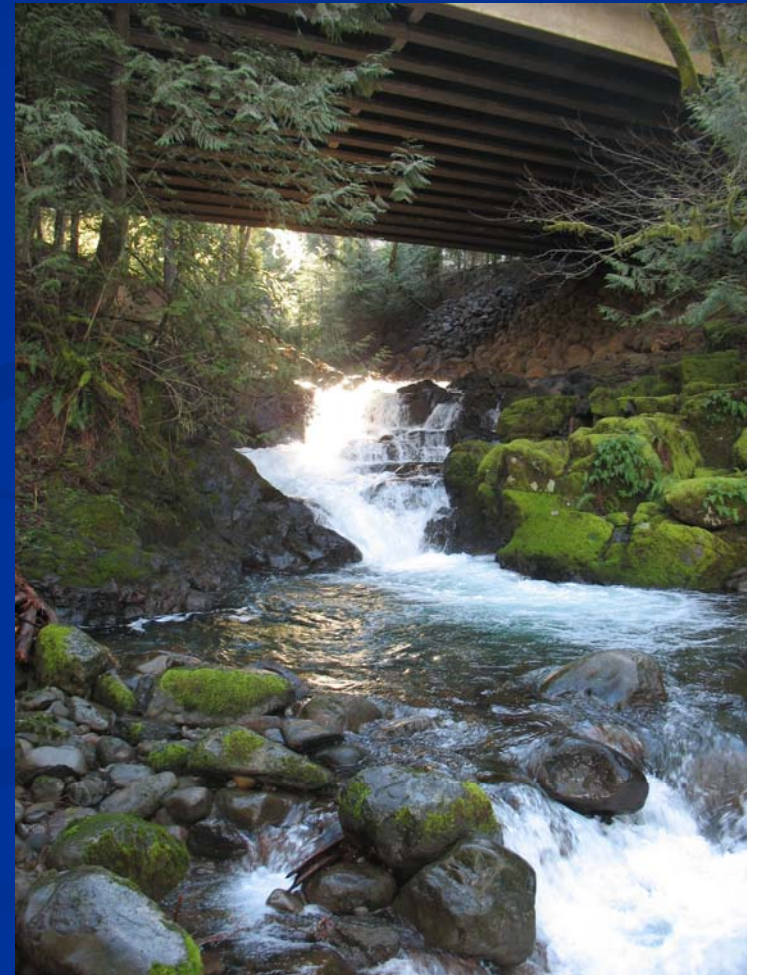
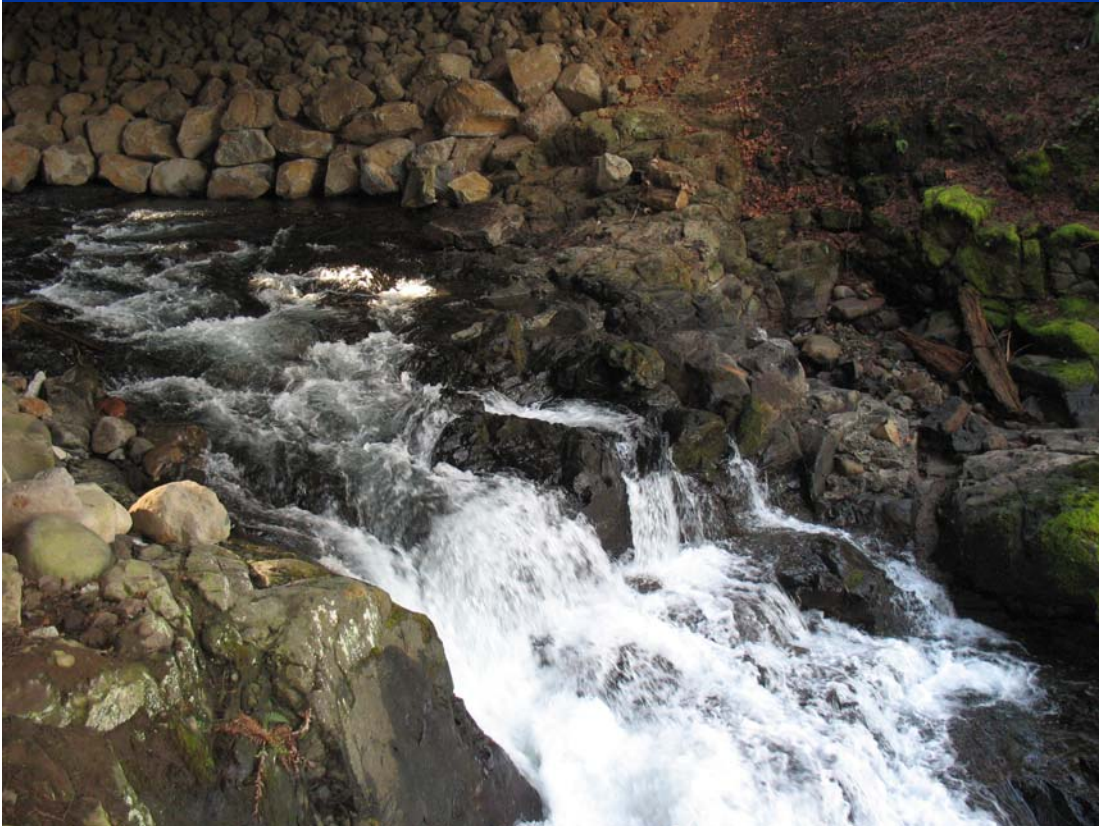
Alder Creek Fish Passage Project

Brightwood, Oregon



Existing Conditions

- Natural waterfall over basalt outcropping.
- Directly beneath a new Hwy 26 bridge.
- Steep side slopes.



Bypassing Stream

- Sand Bag Dam
- Multiple Small Pumps
- 24" HDPE Pipe
 - Designed to carry maximum flow of 20 cfs



Excavation by Hand



Excavating Pool #1



Placing Rebar



Formwork



Formwork



Flow Returned



Downstream View



Questions?