

# CLIMATE SMART COMMUNITIES SCENARIOS PROJECT



## What the future might look like in 2035

### Scenario

## A

### Recent Trends

This scenario shows the results of implementing adopted plans to the extent possible with existing revenue.

### Scenario

## B

### Adopted Plans

This scenario shows the results of successfully implementing adopted land use and transportation plans and achieving the current RTP, which relies on increased revenue.

### Scenario

## C

### New Plans and Policies

This scenario shows the results of pursuing new policies, more investment and new revenue sources to more fully achieve adopted and emerging plans.

# INVESTING IN GREAT COMMUNITIES

**The Climate Smart Communities Scenarios Project was initiated in response to a mandate from the 2009 Oregon Legislature to reduce per capita greenhouse gas emissions by 20 percent from cars and small trucks by 2035.**

There are many ways to reduce emissions while creating healthy, more equitable communities and a vibrant regional economy. Providing services and shopping near where people live, expanding transit service, encouraging electric cars and providing safer routes for walking and biking all can help.

The goal of the Climate Smart Communities Scenarios Project is to engage community, business, public health and elected leaders in a discussion with their communities to shape a preferred approach that meets the state mandate and supports local and regional plans for downtowns, main streets and employment areas.

To realize that goal, Metro evaluated three approaches – or scenarios – over the summer of 2013 to better understand how best to support community visions and reduce greenhouse gas emissions. The results will be used to frame the regional discussion about which investments and actions should be included in a preferred approach for the Metro Council to consider for adoption in December 2014.

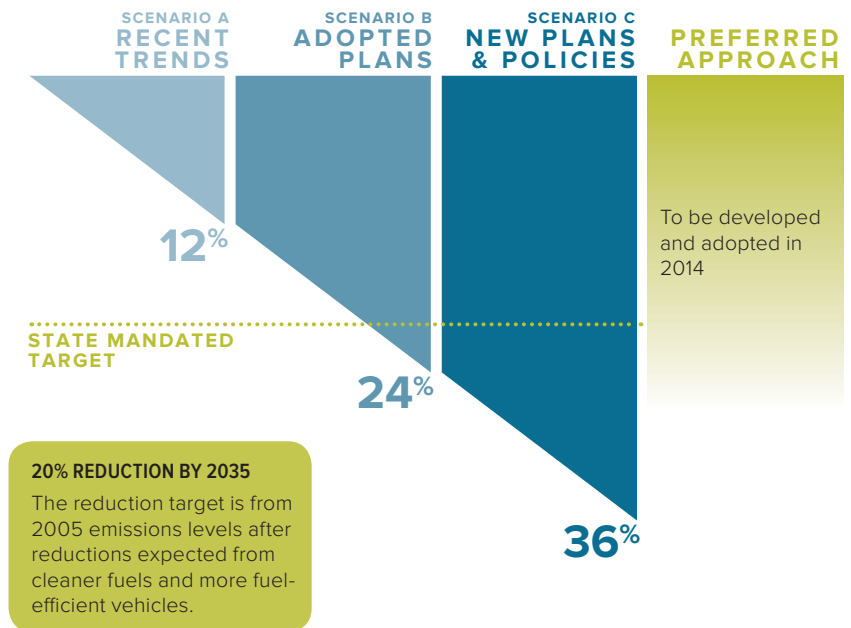
## WHAT HAVE WE LEARNED SO FAR?

### Adopted plans can meet the target

Our analysis indicates that adopted local and regional plans can meet our target for reducing greenhouse gas emissions – if we make the investments and take the actions needed to implement those plans.

**This is good news, but there is more work to be done.**

## REDUCED GREENHOUSE GAS EMISSIONS PERCENT BELOW 2005 LEVELS



INVESTMENTS AND ACTIONS THAT CREATE GREAT COMMUNITIES	RELATIVE CLIMATE BENEFIT
<b>WHERE WE LIVE AND WORK</b>	
Implement 2040 Growth Concept	★★★★★
Implement local zoning, comprehensive plans and transportation plans	★★★★★
Provide new schools, services, and shopping close to neighborhoods	★★★★★
Manage the urban growth boundary	★★★☆☆
<b>HOW WE GET AROUND</b>	
Maintain and make transit more convenient, frequent, accessible and affordable	★★★★★
Manage parking with a market-responsive approach	★★★★☆
Use technology and “smarter” roads to manage traffic flow and boost efficiency	★★★★☆
Provide information to expand use of low carbon travel options and fuel-efficient driving techniques	★★★★☆
Make walking and biking more safe and convenient with complete streets and trails	★★★☆☆
Maintain and make streets and highways more safe, reliable and connected	★★★☆☆
Expand access to car-sharing	★★★☆☆
<b>OUR HEALTH AND ENVIRONMENT</b>	
Transition to low emission vehicles and engines, including electric vehicles	★★★★★
Transition to cleaner and low carbon fuels	★★★★★
Achieve federal fuel economy standards	★★★★☆

## WHAT INVESTMENTS AND ACTIONS BEST SUPPORT YOUR COMMUNITY VISION?

### Each community is unique

Most of the investments and actions under consideration are already being implemented to varying degrees across the region to realize community visions and other important economic, social and environmental goals.

A one-size-fits-all preferred approach won't meet the needs of our diverse communities. A combination of investments and actions will help us realize our shared vision for making this region a great place for generations to come.



## WHAT DOES THIS MEAN FOR YOUR COMMUNITY?

### We're all in this together

Local, regional, state and federal partnerships are needed to make the investments and take the actions necessary to create great communities while reducing greenhouse gas emissions.

Working together, we can develop a shared strategy that may include a transportation legislative package for 2015.

RELATIVE COST	WHO HAS A ROLE?			
	FEDERAL	STATE	REGIONAL	LOCAL
\$\$\$			●	●
\$\$\$				●
\$\$\$				●
\$\$\$			●	
Up to \$\$\$	●	●	●	●
\$\$\$				●
\$\$\$	●	●	●	●
\$\$\$	●	●	●	●
\$\$\$	●	●	●	●
Up to \$\$\$	●	●	●	●
\$\$\$				●
\$\$\$	●	●	●	●
\$\$\$	●	●		
\$\$\$	●	●		



## About Metro

Clean air and clean water do not stop at city limits or county lines. Neither does the need for jobs, a thriving economy, and sustainable transportation and living choices for people and businesses in the region. Voters have asked Metro to help with the challenges and opportunities that affect the 25 cities and three counties in the Portland metropolitan area.

A regional approach simply makes sense when it comes to providing services, operating venues and making decisions about how the region grows. Metro works with communities to support a resilient economy, keep nature close by and respond to a changing climate. Together, we're making a great place, now and for generations to come.

Stay in touch with news, stories and things to do.

[www.oregonmetro.gov/connect](http://www.oregonmetro.gov/connect)

### Metro Council President

Tom Hughes

### Metro Council

Shirley Craddick, District 1  
Carlotta Collette, District 2  
Craig Dirksen, District 3  
Kathryn Harrington, District 4  
Sam Chase, District 5  
Bob Stacey, District 6

### Auditor

Suzanne Flynn

## WHAT'S NEXT?

**January to May 2014** Community and business leaders, local governments and the public are asked to weigh in on which investments and actions should be included in the region's preferred approach

**June 2014** The Metro Council is asked to provide direction to staff on the draft preferred approach

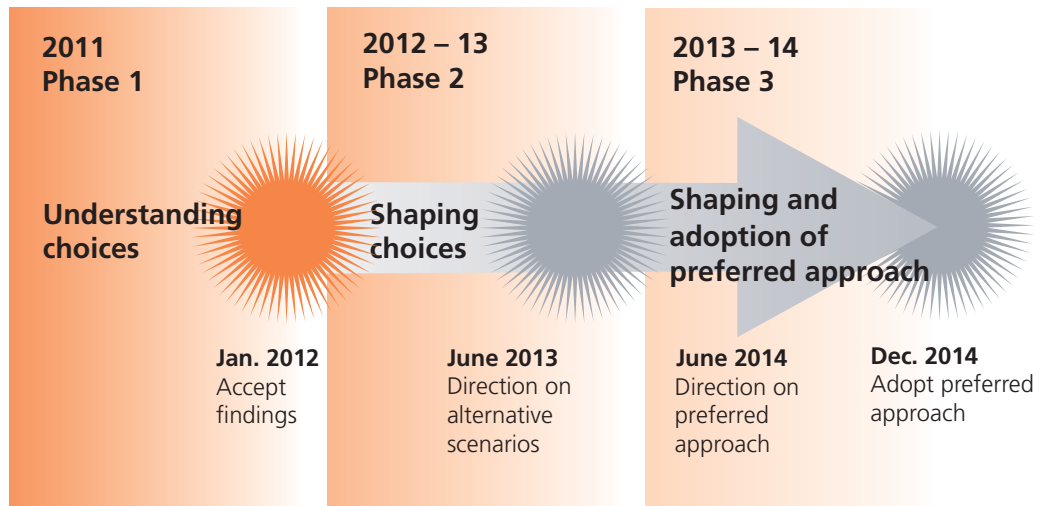
**Summer 2014** Evaluation of preferred approach

**September 2014** Final public review of preferred approach

**December 2014** Metro Council considers adoption of preferred approach

**January 2015** Submit adopted approach to Land Conservation and Development Commission for approval

## Climate Smart Communities Scenarios Project timeline



## WHERE CAN I FIND MORE INFORMATION?

[www.oregonmetro.gov/climatescenarios](http://www.oregonmetro.gov/climatescenarios)

Visit the project website to learn more about existing community efforts and their challenges, and to download other publications and reports.

For email updates, send a message to [climatescenarios@oregonmetro.gov](mailto:climatescenarios@oregonmetro.gov)

# MAKING A GREAT PLACE



JAN. 29, 2014