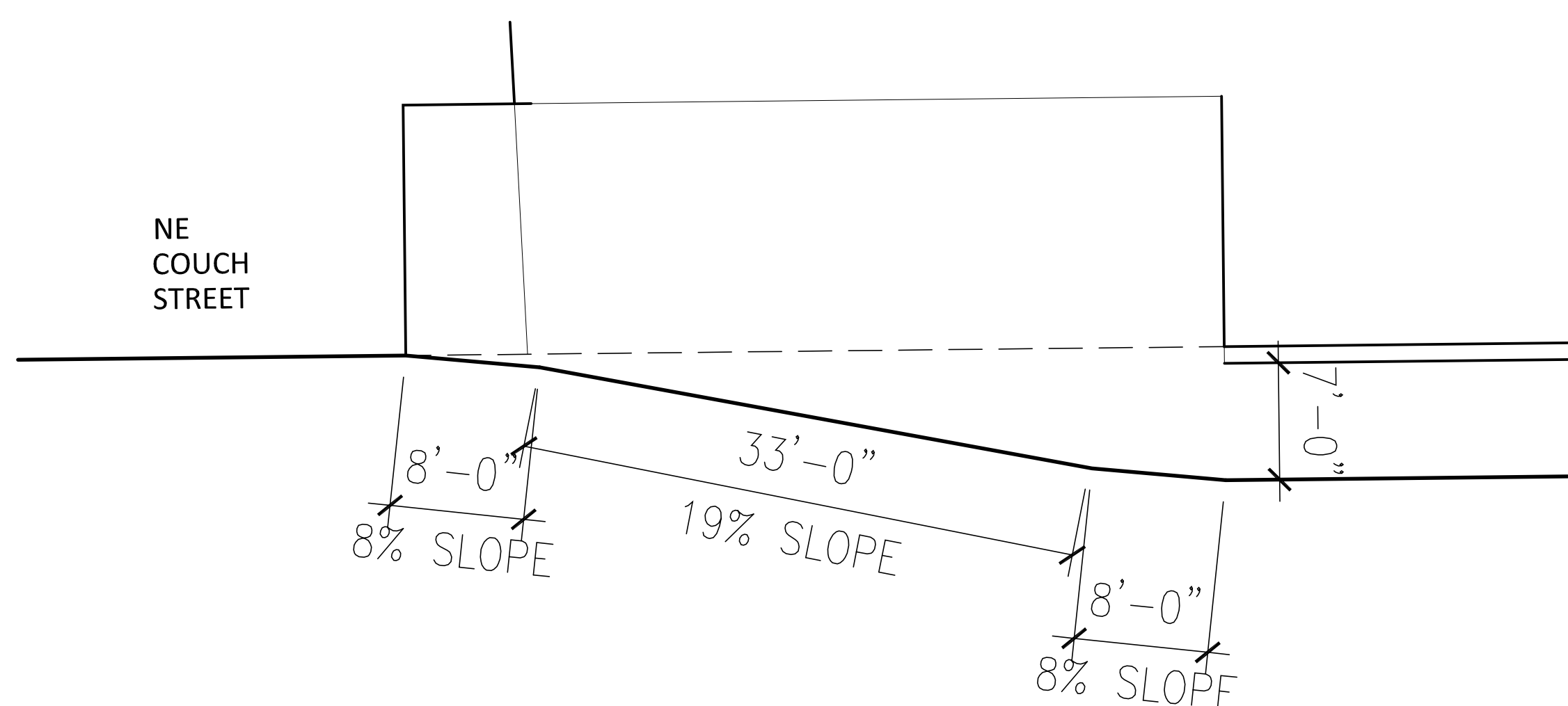
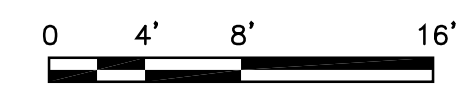


PARKING LEVEL

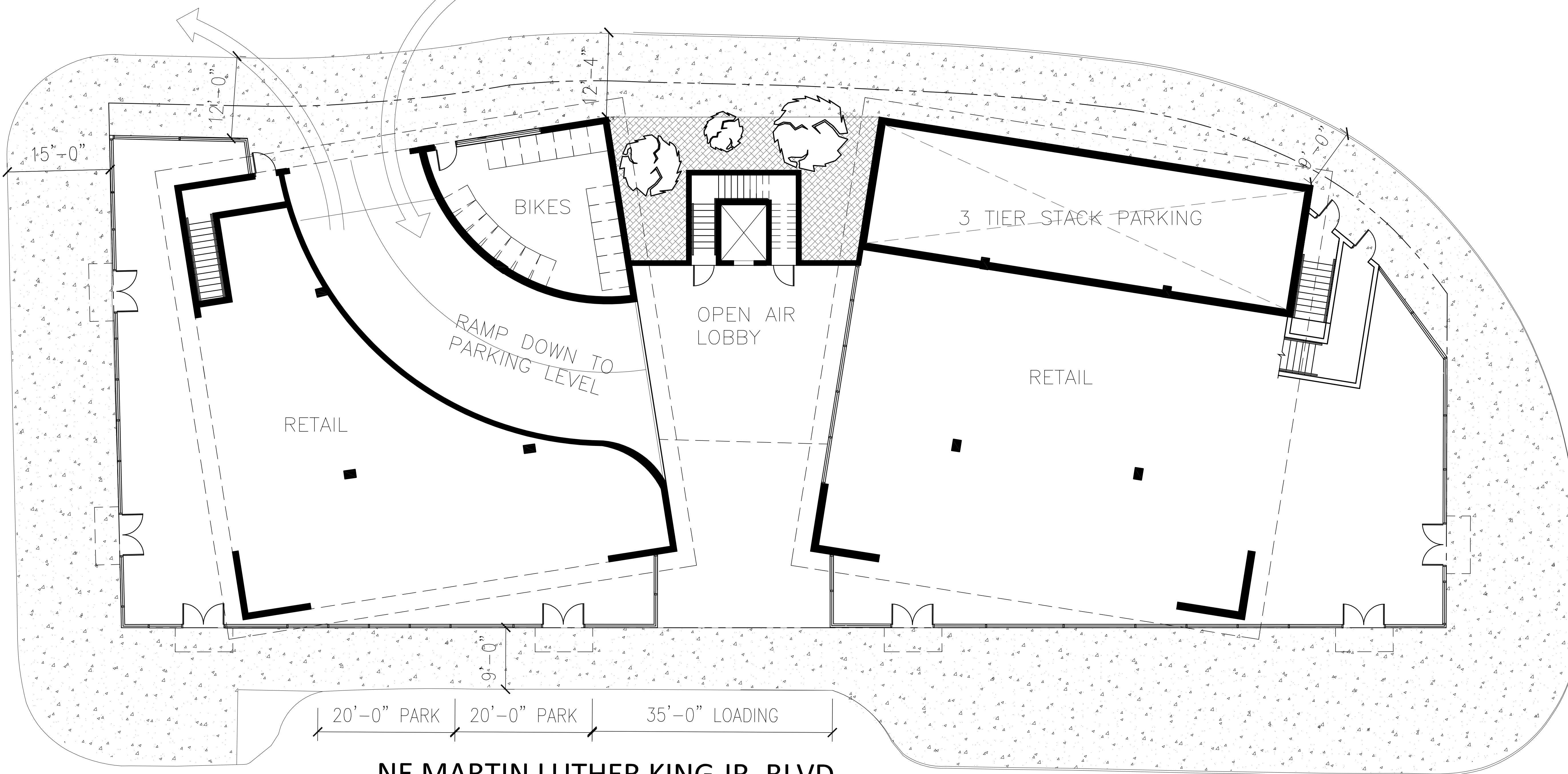


1 LOWER LEVEL PLAN
1/8" = 1'-0" @ 22X34, 1/16" = 1'-0" @ 11X17

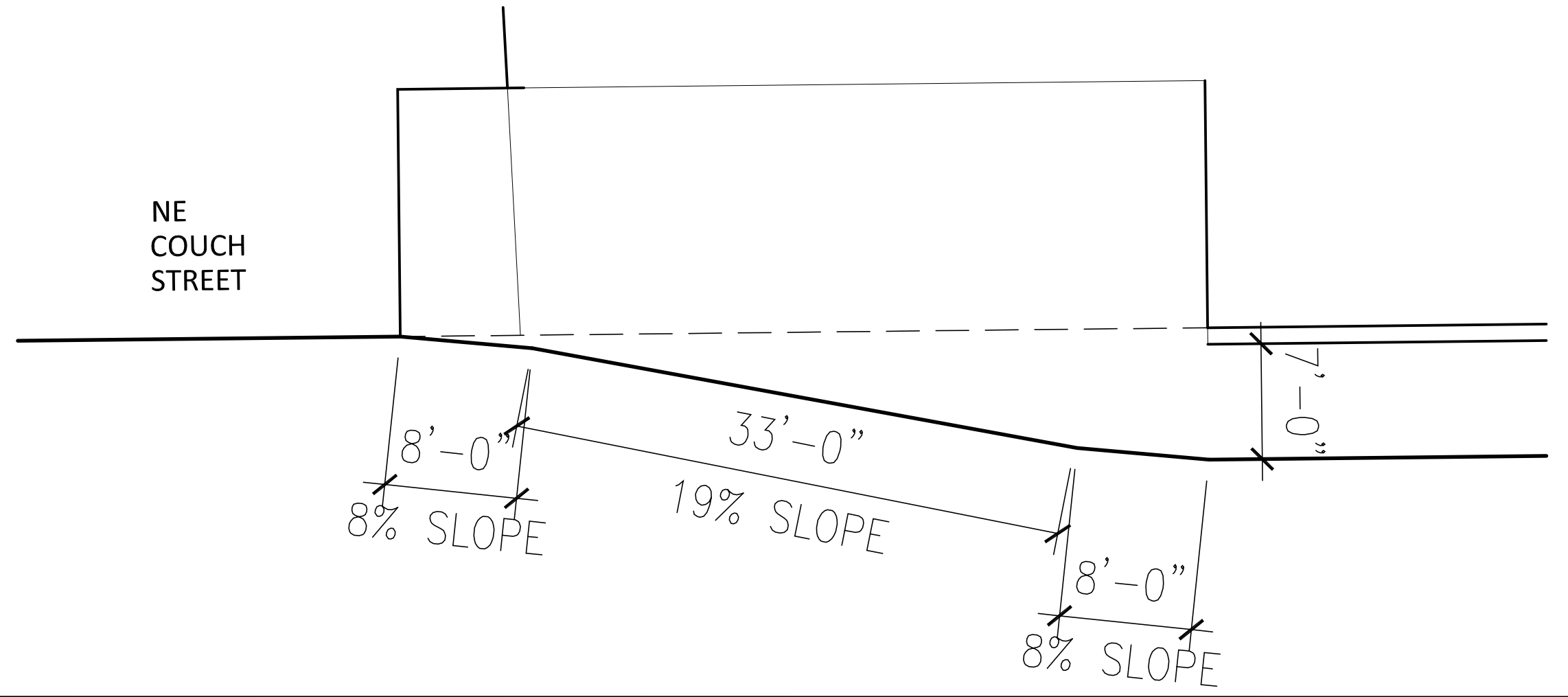


NE COUCH STREET

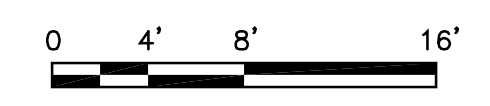
E BURNSIDE STREET



NE MARTIN LUTHER KING JR. BLVD



1 FIRST FLOOR PLAN
 1/8" = 1'-0" @ 22X34, 1/16" = 1'-0" @ 11X17



BRETT SCHULZ
 ARCHITECT

1111 E Burnside St., #303
 Portland, Oregon 97214
 503-222-9099

brett@brettschulz.com
 www.brettschulz.com

GUERRILLA DEVELOPMENT

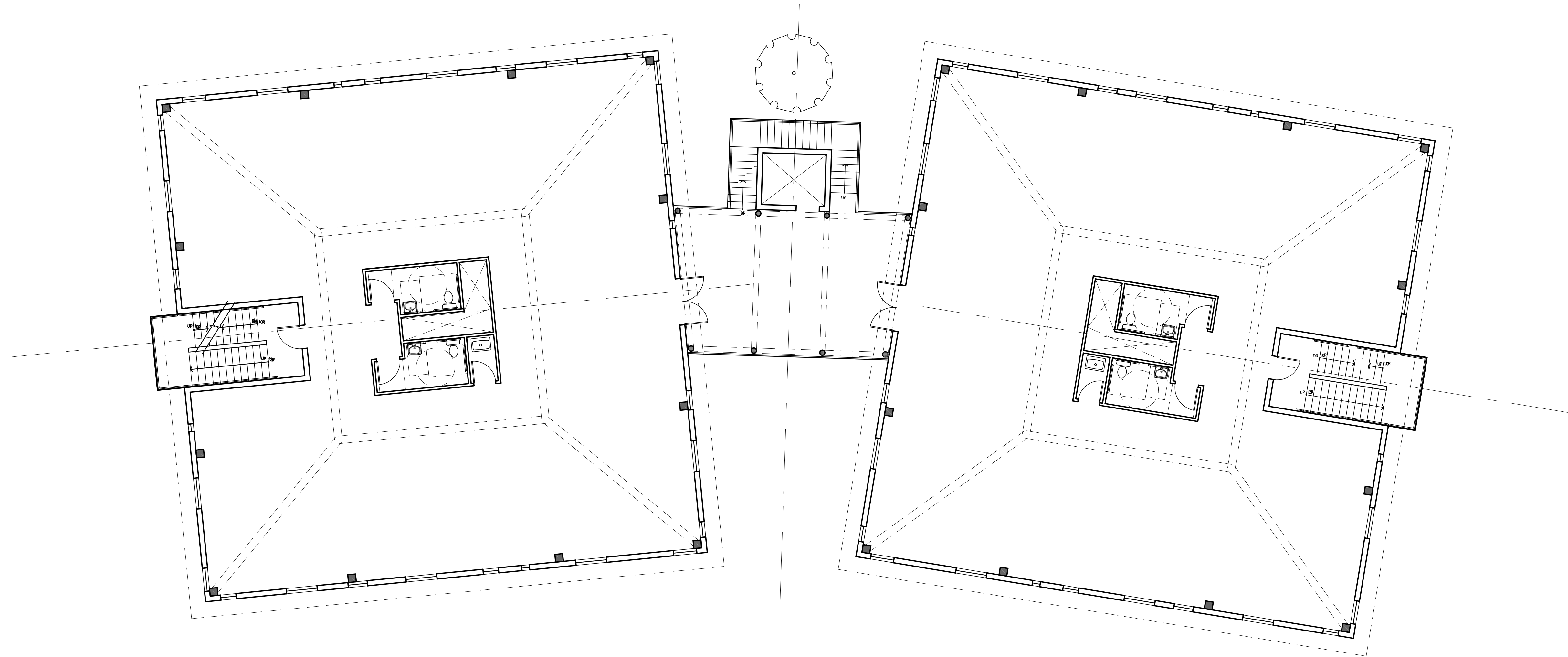
THE DUMBBELL

BLOCK 76
 11 E. BURNSIDE ST.
 PORTLAND, OREGON
 97214

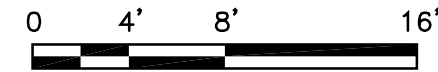
PRELIMINARY

DATE: MARCH 11, 2014
 DRAWN: BSC
 CHECKED: BJS
 APPROVED:
 REVISIONS:

SCALE: 1/8" = 1'-0"
 FIRST FLOOR
 PLAN



1 TYPICAL FLOOR PLAN
1/8" = 1'-0" @ 22X34, 1/16" = 1'-0" @ 11X17



GUERRILLA DEVELOPMENT

THE DUMBBELL

BLOCK 76
11 E. BURNSIDE ST.
PORTLAND, OREGON
97214

PRELIMINARY

DATE: MARCH 11, 2014

DRAWN: BSC

CHECKED: BJS

APPROVED:

REVISIONS:

-

-

-

-

-

-

-

-

-

-

SCALE: 1/8" = 1'-0"

TYPICAL FLOOR
PLAN

BRETT SCHULZ
ARCHITECT

1111 E Burnside St., #303
Portland, Oregon 97214
503-222-9099

brett@brettschulz.com
www.brettschulz.com

GUERRILLA DEVELOPMENT

THE DUMBBELL

BLOCK 76
11 E. BURNSIDE ST.
PORTLAND, OREGON
97214

PRELIMINARY

DATE: MARCH 11, 2014

DRAWN: BSC

CHECKED: BJS

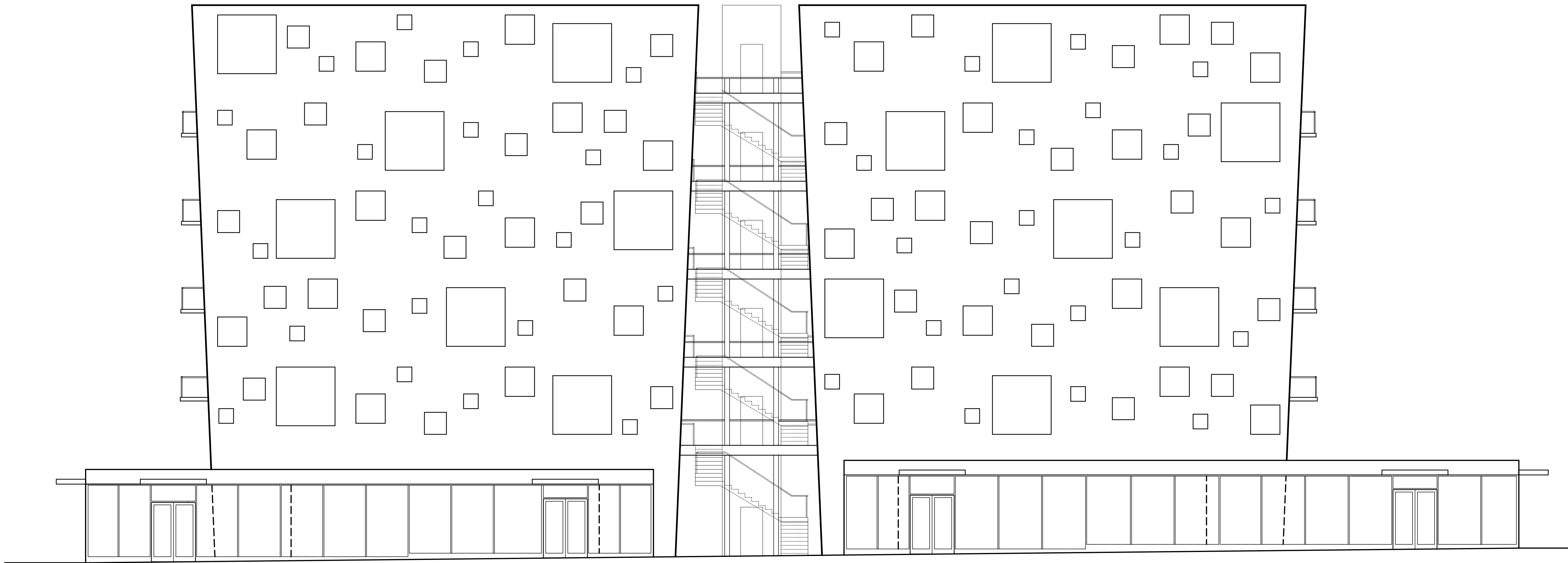
APPROVED:

REVISIONS:

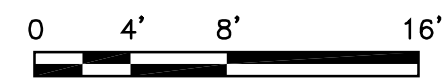
-

SCALE: 1/8" = 1'-0"

EAST ELEVATION



1 EAST ELEVATION
1/8" = 1'-0" @ 22X34, 1/16" = 1'-0" @ 11X17



BRETT SCHULZ
ARCHITECT

1111 E Burnside St., #303
Portland, Oregon 97214
503-222-9099

brett@brettschulz.com
www.brettschulz.com

GUERRILLA DEVELOPMENT

THE DUMBELL

BLOCK 76
11 E. BURNSIDE ST.
PORTLAND, OREGON
97214

PRELIMINARY
PRICING

DATE: MARCH 11, 2014

DRAWN: BSC

CHECKED: BJS

APPROVED:

REVISIONS:

-

SCALE: 1/8" = 1'-0"

EXTERIOR
ELEVATIONS



1 WEST ELEVATION
1/8" = 1'-0" @ 22X34, 1/16" = 1'-0" @ 11X17

