



Comprehensive Plan Update

Working Draft Part 2

Fall 2013



Bureau of Planning and Sustainability
Innovation. Collaboration. Practical Solutions.



Purpose of Today's Meeting

- Learn about Working Draft Part 2
- Discuss Key Directions
- Explore the Map App



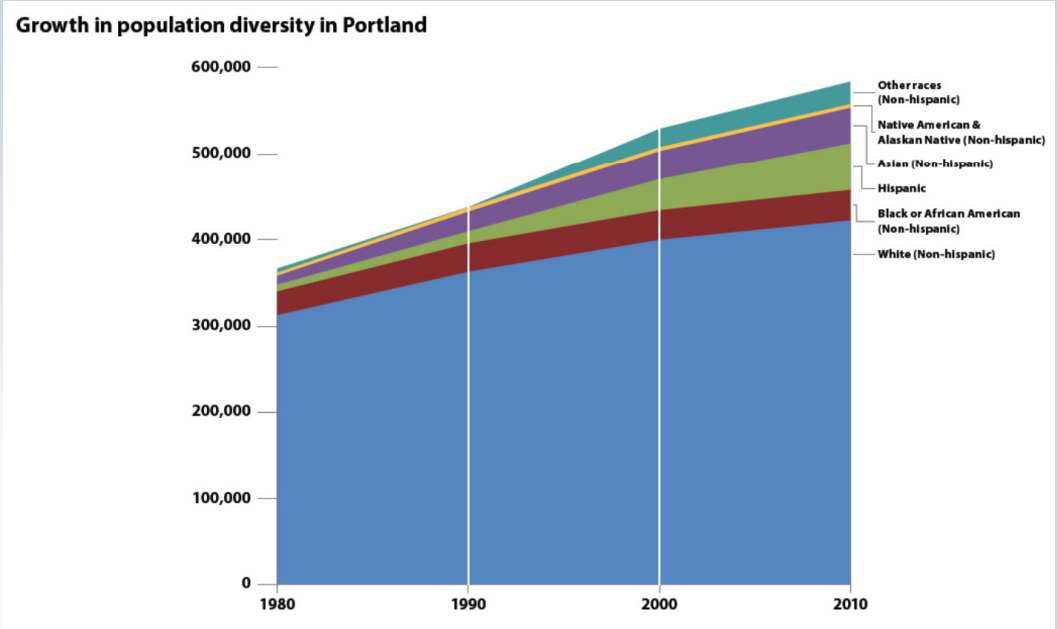
What is the Comprehensive Plan?

State-mandated, long-range plan

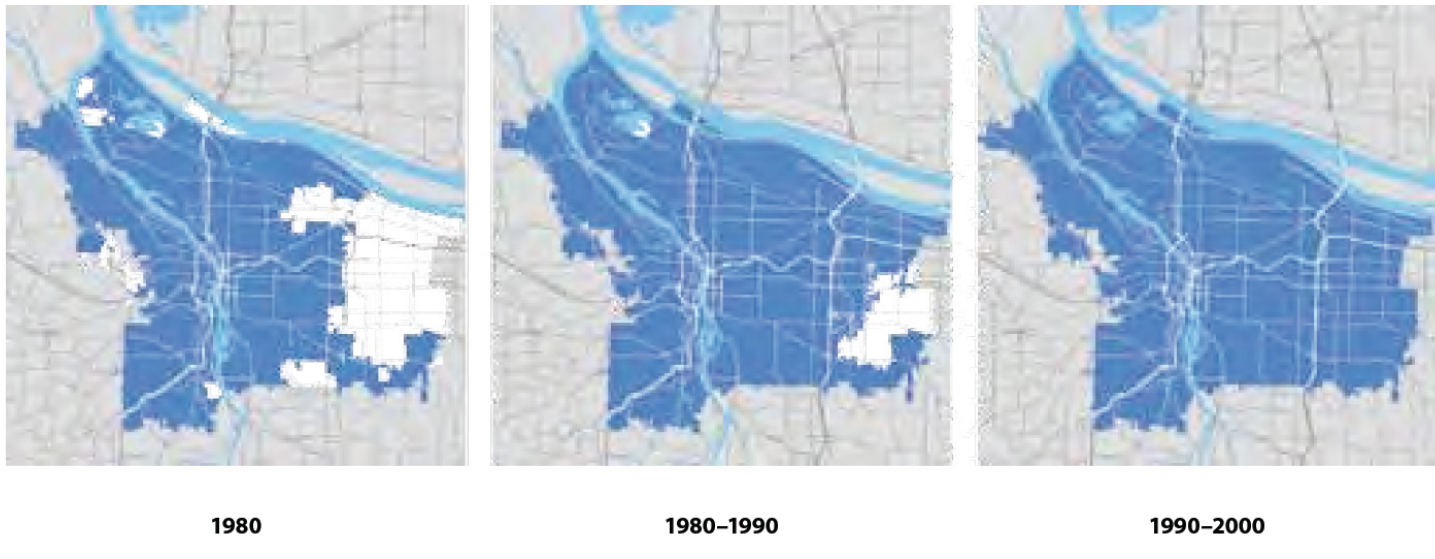
- Prepare for and manage growth
- Plan and coordinate major investments
- Guide decision-making on land use, transportation, parks, sewer and water systems, natural resources, etc.



30 Years of Change



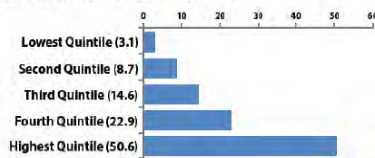
Annexations — The shaded areas of the maps show the City of Portland boundary.



12 Measures of Success

1 EQUITY AND INCLUSION

INCOME DISTRIBUTION (CITY OF PORTLAND, 2005-09)



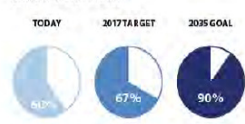
DIVERSITY INDEX

55

While racial and ethnic diversity, overall, is growing, it varies across the city. The diversity index shows that between 2000 and 2010, diversity declined in inner North and Northeast neighborhood and increased in East Portland. The information suggests that non-white residents are being pushed to areas where housing is more affordable, but transit service is less frequent and with unimproved fewer pedestrian-accessible commercial services.

3 EDUCATED YOUTH

HIGH SCHOOL ON-TIME GRADUATION RATE



Right direction, but challenges ahead

4 PROSPEROUS HOUSEHOLDS

TODAY



PERCENT ABOVE SELF-SUFFICIENCY

2017 TARGET



Right direction, but will still be a challenge to meet goal

2035 GOAL



2 RESIDENT SATISFACTION

PERCENT SATISFIED LIVING IN THE CITY



Right direction, steadily increasing

6 JOB GROWTH

NUMBER OF JOBS



Still need more jobs

7 TRANSIT AND ACTIVE TRANSPORTATION

TODAY



PERCENT WHO TAKE TRANSIT, WALK, BIKE OR LESS POLLUTING OPTIONS TO WORK

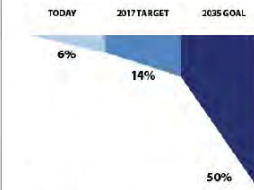


Right direction, but will still be a challenge to meet goal



8 REDUCED CARBON EMISSIONS

PERCENT BELOW 1990 LEVELS



Emissions steadily decreasing, but much more work to do

9 COMPLETE NEIGHBORHOODS



Less than half of city considered "complete"

Right direction, slow incremental progress

Incremental progress

10 HEALTHIER PEOPLE

ADULTS AT A HEALTHY WEIGHT



Declining

EIGHTH GRADERS AT A HEALTHY WEIGHT



No trend data

5 GROWING BUSINESSES

EXPORT VALUE, CITY RANK



Right direction

11 SAFER CITY

PERCENT WHO FEEL SAFE WALKING ALONE AT NIGHT IN THEIR NEIGHBORHOOD



Right direction, increasing

PART 1 CRIMES PER 1000



Right direction, declining

12 HEALTHY WATERSHEDS

WATER QUALITY INDEX	TODAY	2035 GOAL	TREND
Willamette River	67	75	Right direction, all steadily improving
Columbia Slough	52	60	
Johnson Creek	53	60	
Fanno Creek	56	60	
Tryon Creek	41	60	

TREE CANOPY	TODAY	2017 TARGET	2035 GOAL	TREND
TREE CANOPY	26% (2002)	28%	≥ 33%	Right direction, but challenge to raise percentage

2035 Growth Forecasts

Households

250,000 existing
+ 125,000 new
= 375,000 total

Surplus land for
93,000 units

Jobs

370,000 existing
+ 140,000 new jobs
= 510,000 total

Deficit of land

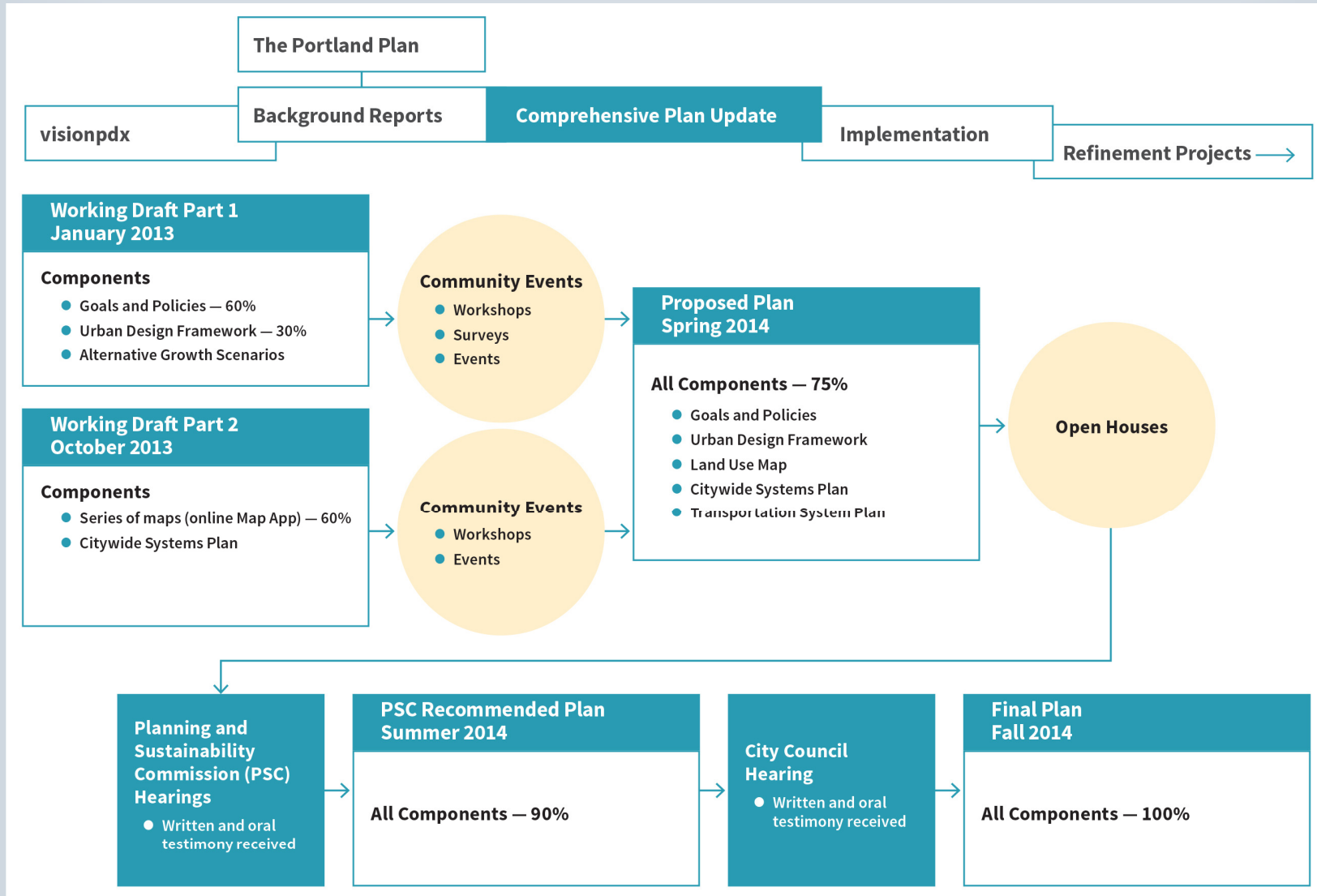


Five Main Components

1. Urban Design Framework
2. Land Use Map
3. Goals and Policies
4. Citywide Systems (Infrastructure) Plan
5. Transportation Systems Plan



Comprehensive Plan Update Process



Working Draft Part 2

- **Preliminary Working Maps**

- published in an online Map App

- <http://www.portlandbps.com/gis/cpmapp/>

- **Infrastructure Plan**

- published in the “Citywide Systems Plan”



Website and WiFi Password

[www.portlandoregon.gov/bps/
pdxcompplan/mapapp](http://www.portlandoregon.gov/bps/pdxcompplan/mapapp)

WiFi password: _____



Five Key Directions

1. Create Healthy Connected Neighborhoods by growing in centers and corridors
2. Provide Land and Infrastructure for Development
3. Connect Habitats and Building Green Infrastructure
4. Make Strategic Investments
5. Prepare for Climate Change, Earthquakes, and Other Natural Hazards



1

Create healthy
connected
neighborhoods by
growing in centers
and corridors



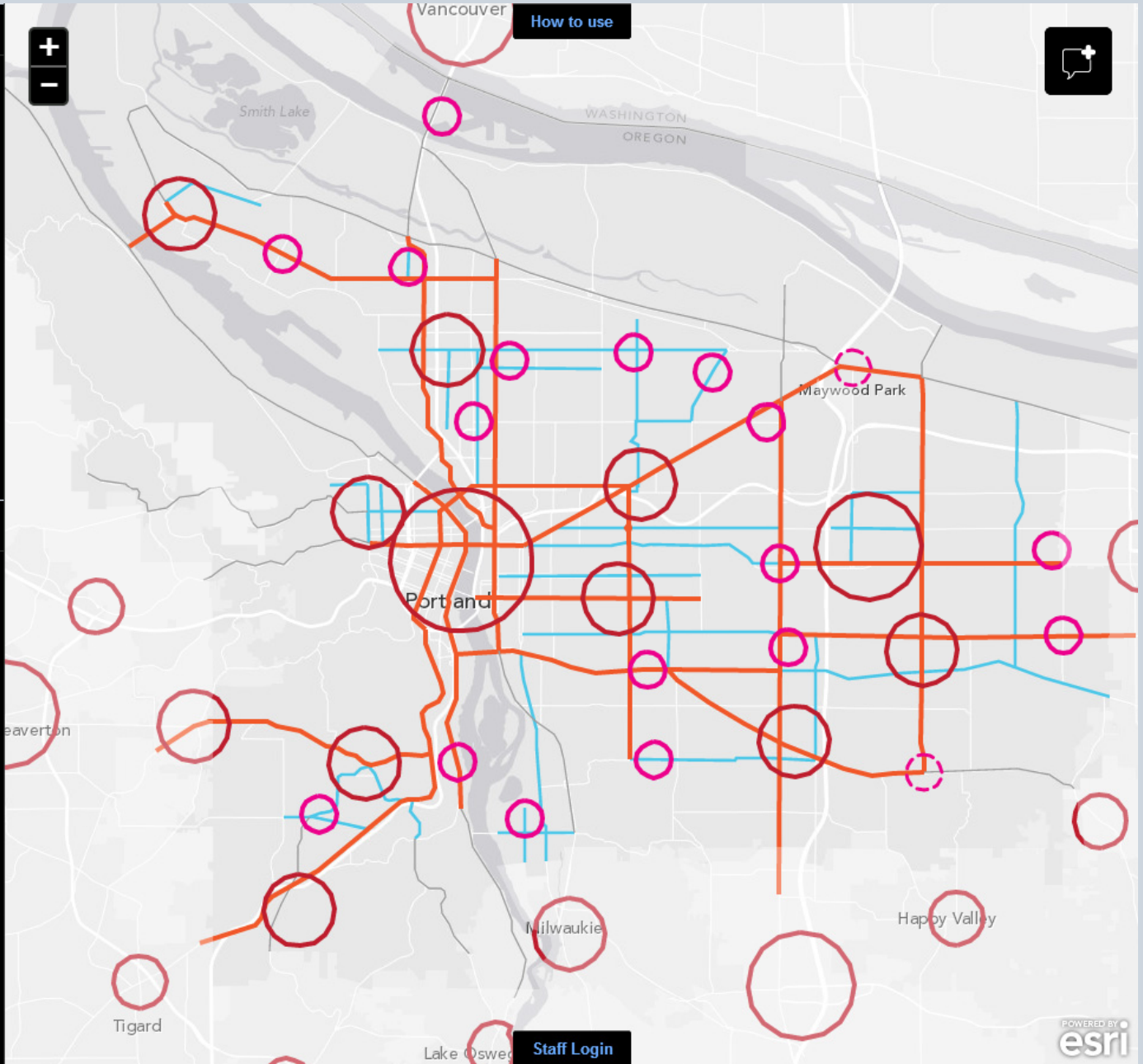
Discussion Layers

- Centers >
- Corridors >
- Employment >
- Public Transit >
- City Greenways >
- Urban Habitat >
- Stormwater >

Background Layers

- Median Age >
- Youth Population >
- Median Income >
- Communities of Color >
- Population Density >
- Vulnerable >
- Gentrification Risk >

MAP LAYERS WORKING MAPS LEGEND



POWERED BY
esri



Types of Centers

Central City

- Metropolitan region's premier center, anchors citywide system of centers
- Regional role in employment and services
- Highest level of transit access in region
- Key role in accommodating regional growth



Gateway Regional Center

- East Portland's largest center
- Hub of employment and services
- High-capacity transit hub
- Important role in accommodating regional growth



Types of Centers

Town Centers and Civic Corridors

- Serve a broad area of the city
- 7,000 households within ½ mile
- 4- to 5-story commercial and residential buildings, sometimes up to 7 stories
- Significant employment or institutional component
- Regional transit connections

Other neighborhood business areas and small nodes fill in service gaps between centers.



Types of Centers

Neighborhood Centers

- Smaller centers serving adjacent neighborhoods
- 3,500 households within ½ mile
- 2- to 4-story buildings
- Employment primarily retail/service
- Frequent bus service

Other neighborhood business areas and small nodes fill in service gaps between centers.



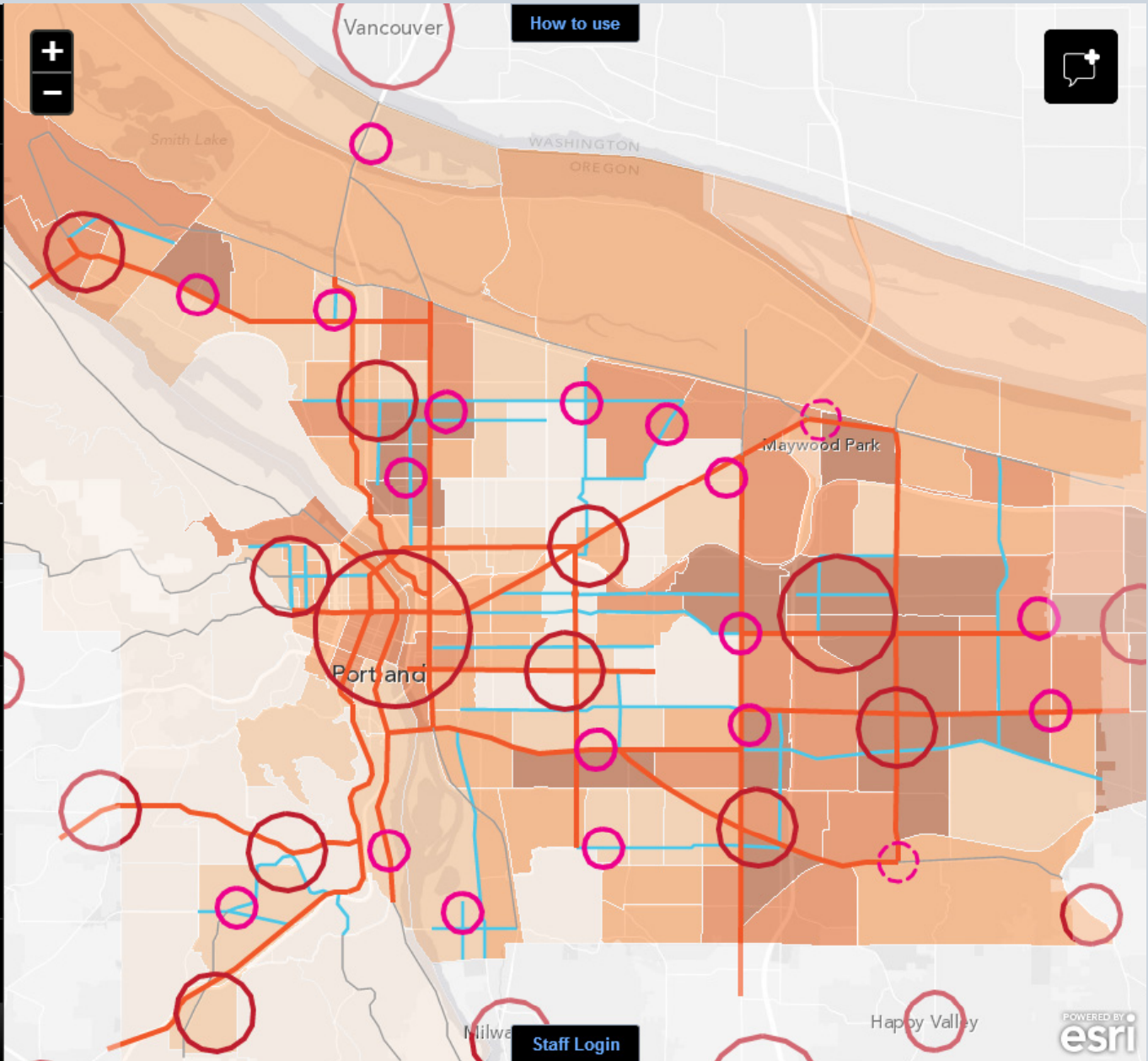
Discussion Layers

- Centers >
- Corridors >
- Employment >
- Public Transit >
- City Greenways >

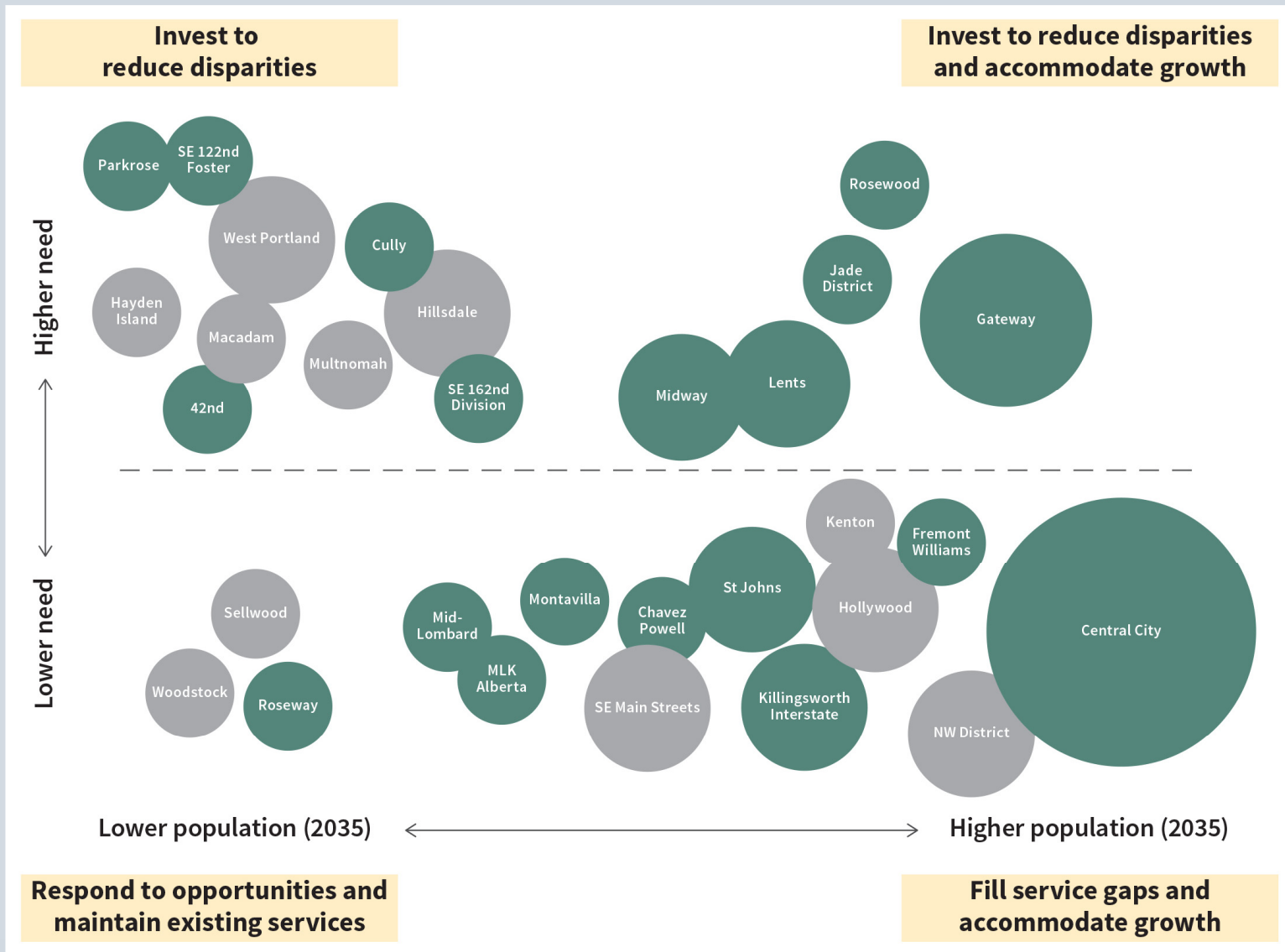
Background Layers

- Communities of >
- Population >
- Vulnerable >
- Gentrification >
- Neighborhoods & >

Map Layers Working Draft Maps Legend



Investment Strategies for Complete Centers



2

Encourage job growth by providing land and infrastructure for development



Employment Areas

- Central City is the region's office center
- Industrial Areas
- Institutions (hospitals and colleges)
- Neighborhood Business Districts



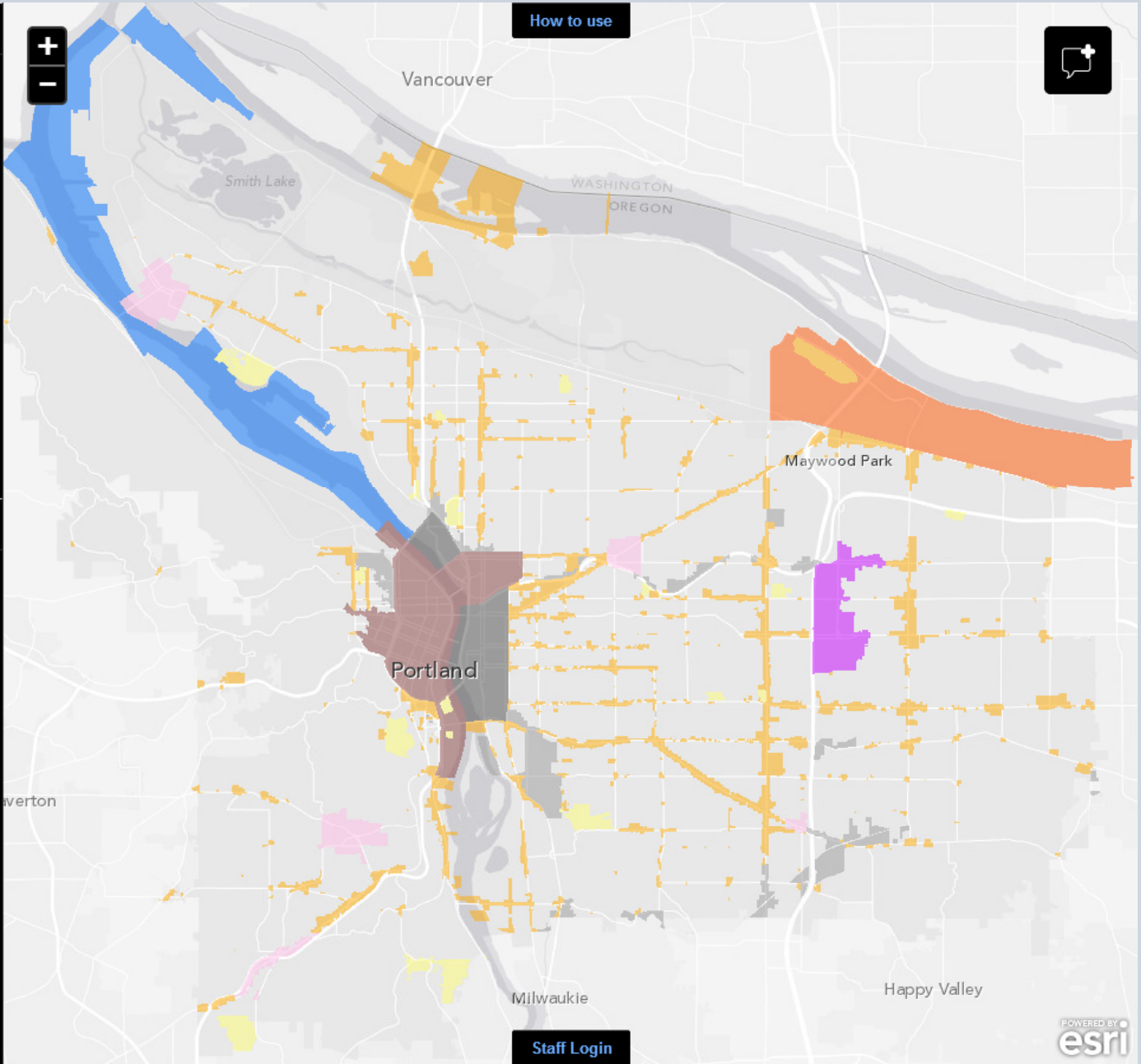
Discussion Layers

- OFF Centers >
- OFF Corridors >
- OFF Employment >
- OFF Public Transit >
- OFF City Greenways >
- OFF Urban Habitat >
- OFF Stormwater >

Background Layers

- ON Employment Areas >
- OFF Park Access >
- OFF Natural Area Access >
- OFF Tree Canopy >
- OFF Watershed Health >
- OFF Complete >
- OFF Employment Access >
- OFF Transit Access >

MAP LAYERS WORKING MAPS LEGEND



2035 Growth Forecasts

- 140,000 new jobs
- Commodity flows, multimodal facilities
 - deficit of 635 acres of industrial land
 - deficit of 74 acres of campus institutional land



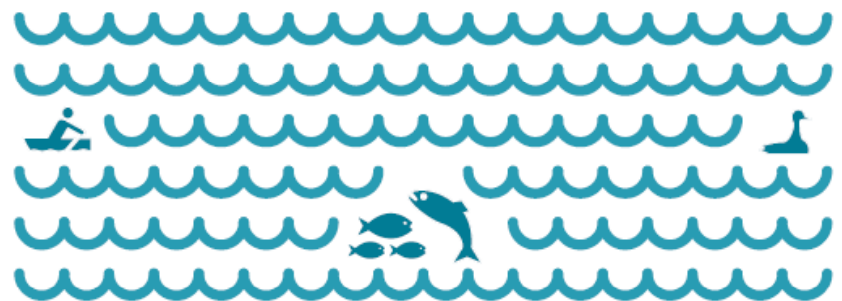
Strategies for Industrial Job Growth

1. Add new industrial areas
2. Intensify development and uses in existing industrial areas
3. Multimodal freight transportation
4. Re-invest in brownfields
5. Increase employment land in East Portland
6. Balance persistent land use conflicts



3

Support a healthy environment by connecting habitats and building green infrastructure



Strategies to Maintain and Improve Environmental Health and Quality

1. Protect, enhance and expand Urban Habitat Corridors and Areas
2. Build City Greenways
3. Manage stormwater with natural and built green infrastructure



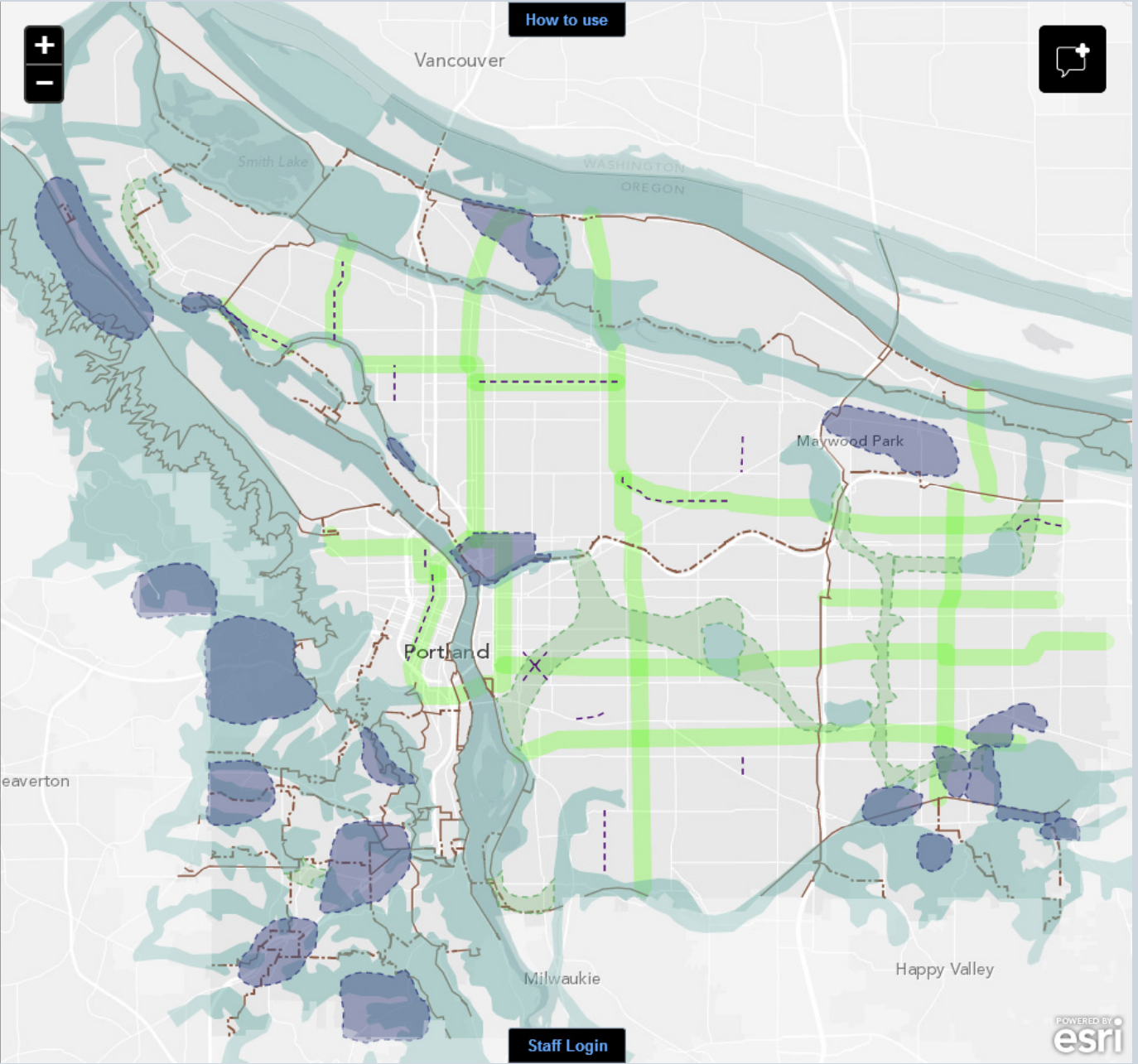
Discussion Layers

- City Greenways >
- Urban Habitat >
- Stormwater >
- Water >
- Sewer / Stormwater >
- Parks >

Background Layers

- Employment Areas >
- Park Access >
- Natural Area Access >
- Tree Canopy >
- Watershed Health >
- Complete >

Map Layers Working Draft Maps Legend



4

**Reduce disparities
and increase
equity through
strategic
infrastructure
investments**



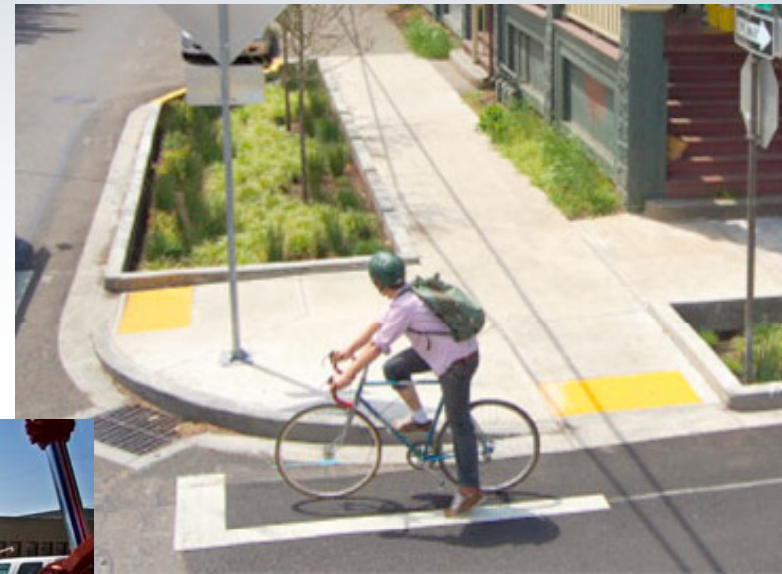
Infrastructure

- Water pipes and reservoirs
- Sanitary sewer and wastewater treatment
- Stormwater sewers and swales
- Streets, bridges, some sidewalks, traffic signals, street lights
- Parks, community centers, and trails



Core Infrastructure Concerns

- System maintenance
- System deficiencies
- Future needs



Infrastructure Equity

All Portlanders have equitable access to infrastructure services that are appropriate to the context of the community.



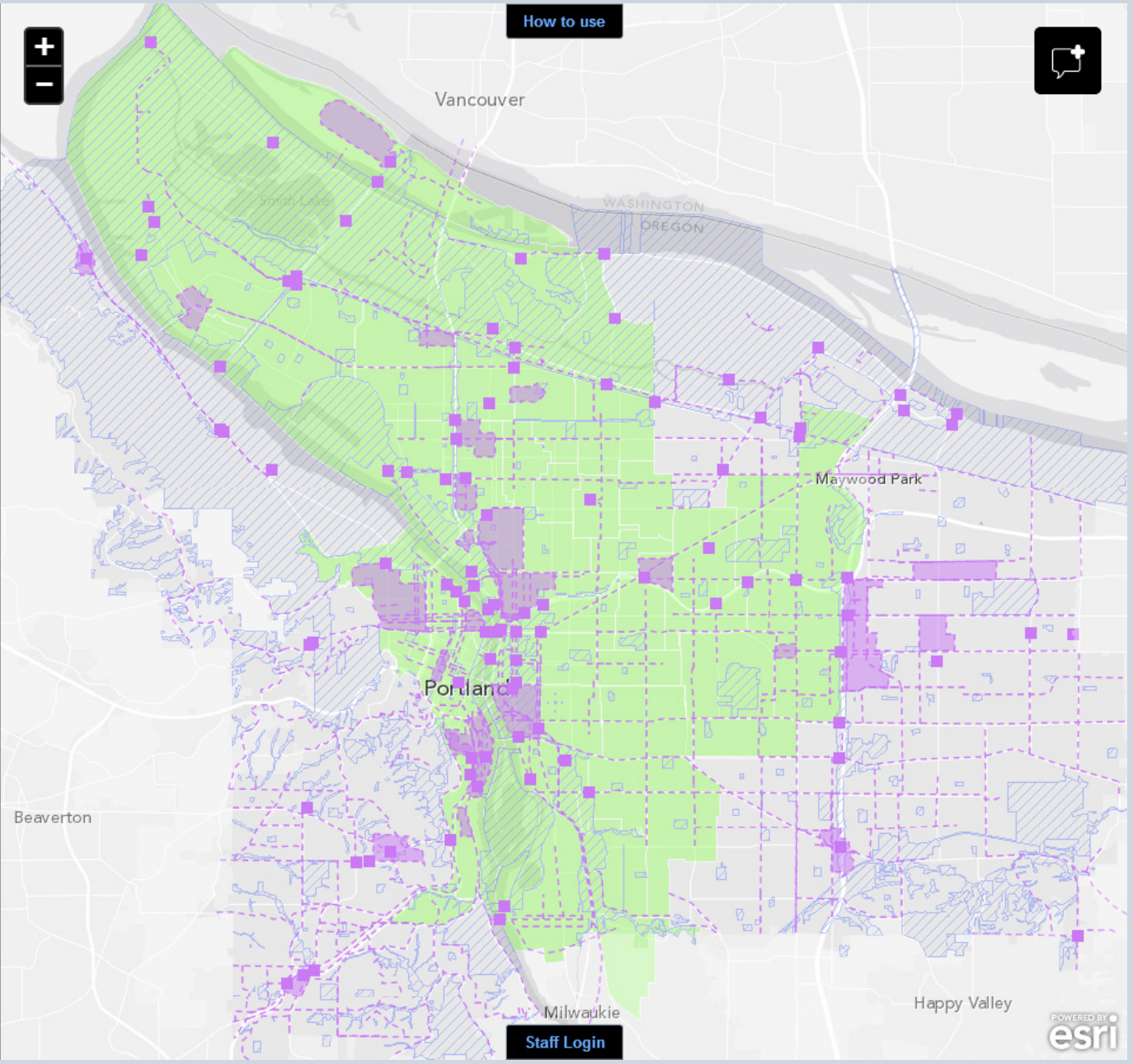
Discussion Layers

- OFF Urban Habitat >
- OFF Stormwater >
- OFF Water >
- OFF Sewer / Stormwater >
- OFF Parks >
- ON Transportation >

Background Layers

- OFF Zoning >
- OFF Earthquake Hazard >
- OFF Landslide Hazard >
- OFF Natural Resources >
- ON Connectivity >
- OFF Cultural Resources >

Map Layers Working Draft Maps Legend



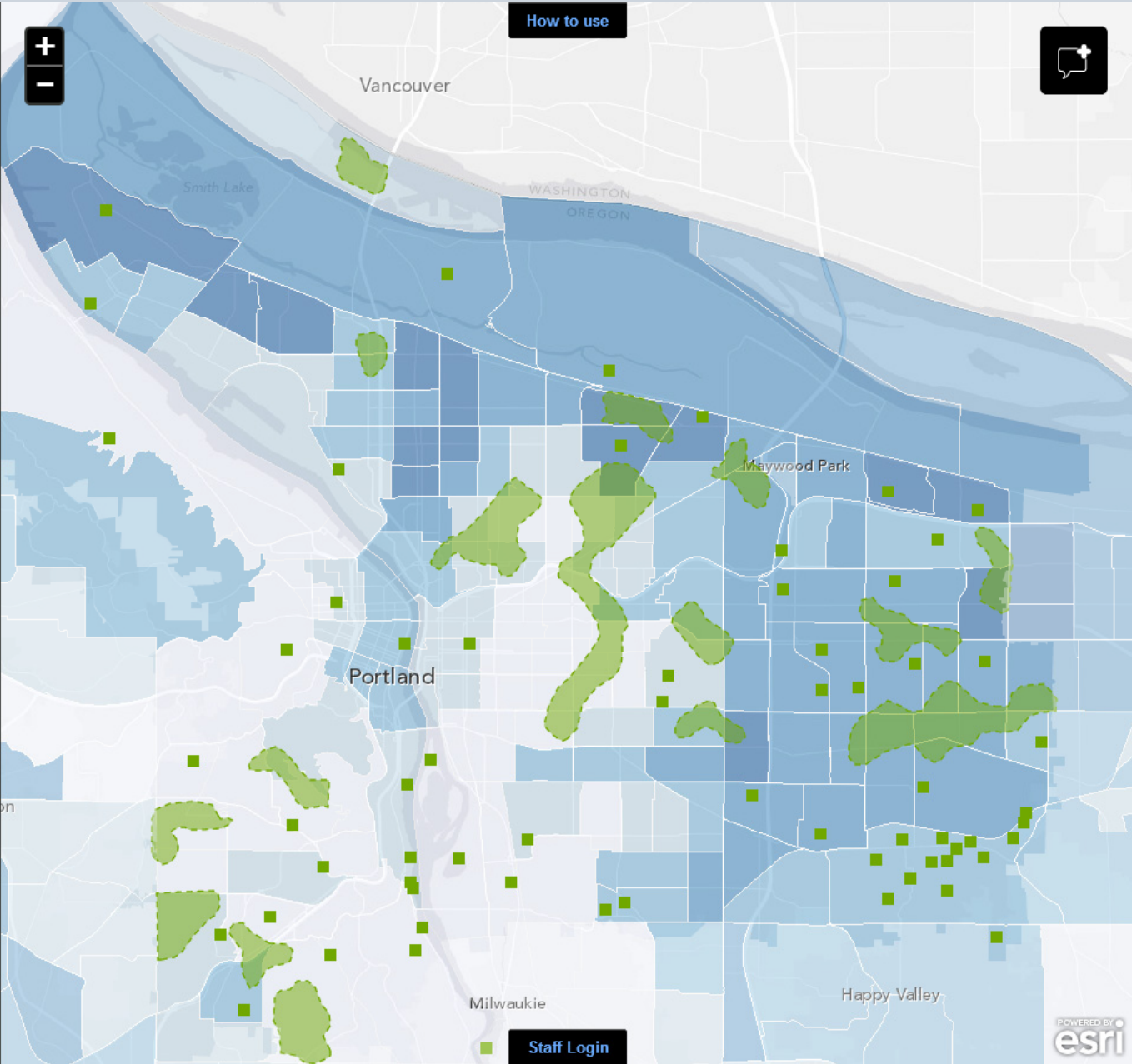
Discussion Layers

- OFF City Greenways >
- OFF Urban Habitat >
- OFF Stormwater >
- OFF Water >
- OFF Sewer / Stormwater >
- ON Parks >
- OFF Transportation >

Background Layers

- OFF Median Age >
- OFF Youth Population >
- OFF Median Income >
- ON Communities of Color >
- OFF Population Density >
- OFF Vulnerable >
- OFF Gentrification Risk >

MAP LAYERS WORKING MAPS LEGEND



Strategies to Reduce Infrastructure Disparities and Improve Equity

1. Make infrastructure investments to fill gaps in services
2. Grow in areas that have high levels of service
3. View infrastructure investment decisions through an equity lens





5

Improve resilience by preparing for climate change, earthquakes and other natural hazards



Strategies to Improve Resiliency

1. Encourage growth in lower-risk areas
2. Protect and improve the city's green infrastructure
3. Invest in infrastructure to reduce risks
 - critical infrastructure
 - backup systems
 - complete neighborhoods



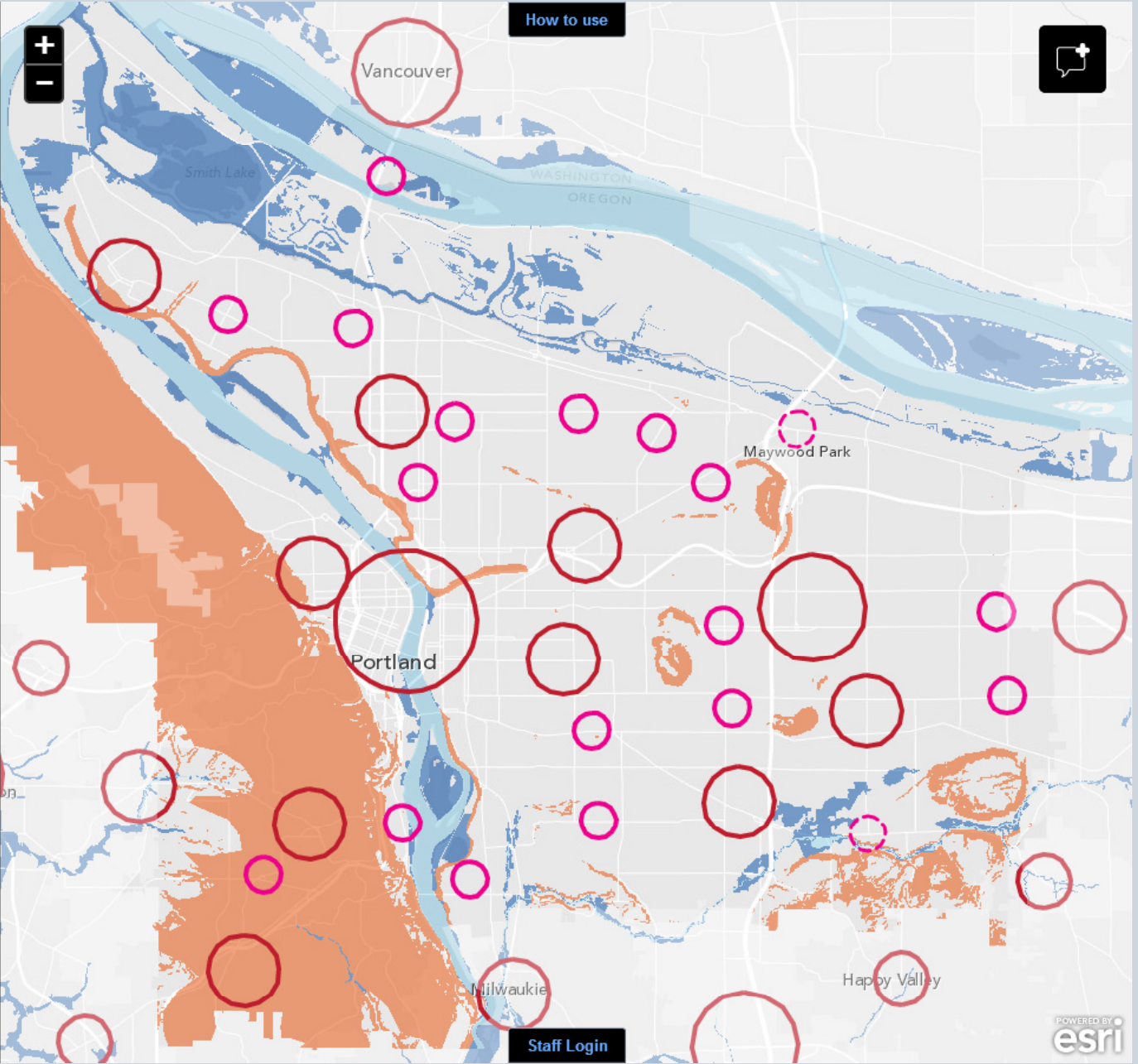
Discussion Layers

- Centers >
- Corridors >
- Employment >
- Public Transit >
- City Greenways >
- Urban Habitat >

Background Layers

- Bike Access >
- Flood Hazard >
- Parks >
- Zoning >
- Earthquake Hazard >
- Landslide Hazard >

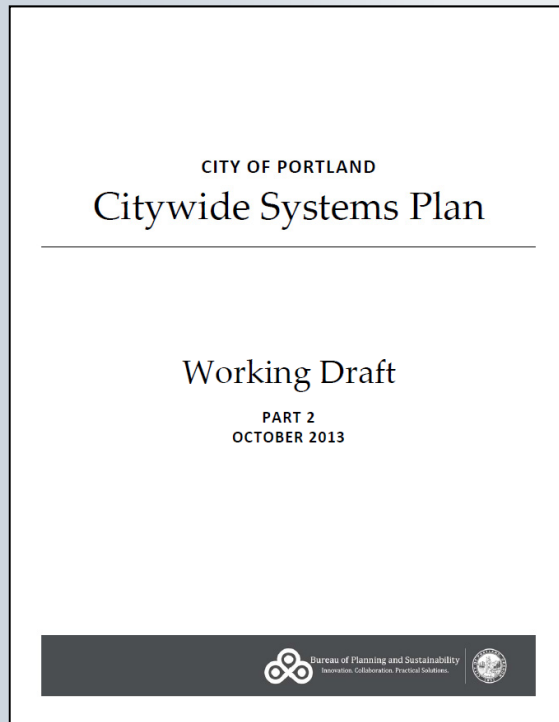
Map Layers Working Draft Maps Legend



CSP



Citywide Systems Plan & List of Significant Projects



- Long-term plan to meet the **infrastructure needs** of the residential and employment growth.
- Updates the City's Public Facilities Plan (1989).

What *Must* Be Included in a Public Facilities Plan?



Water



Sewer

(sanitary and storm)



Transportation

- Facilities needed to support designated land uses
- Inventory + Project List



Our Approach...

Going beyond state requirements
to create a **comprehensive
Citywide Systems Plan** for the
City of Portland.



Parks and Civic Assets Are Integral City Infrastructure



What Does the Draft Citywide Systems Plan Include?



Inventory and Condition



3 office buildings



14,200 hydrants



238 million gallons



2 treatment plants



10,000 park acres

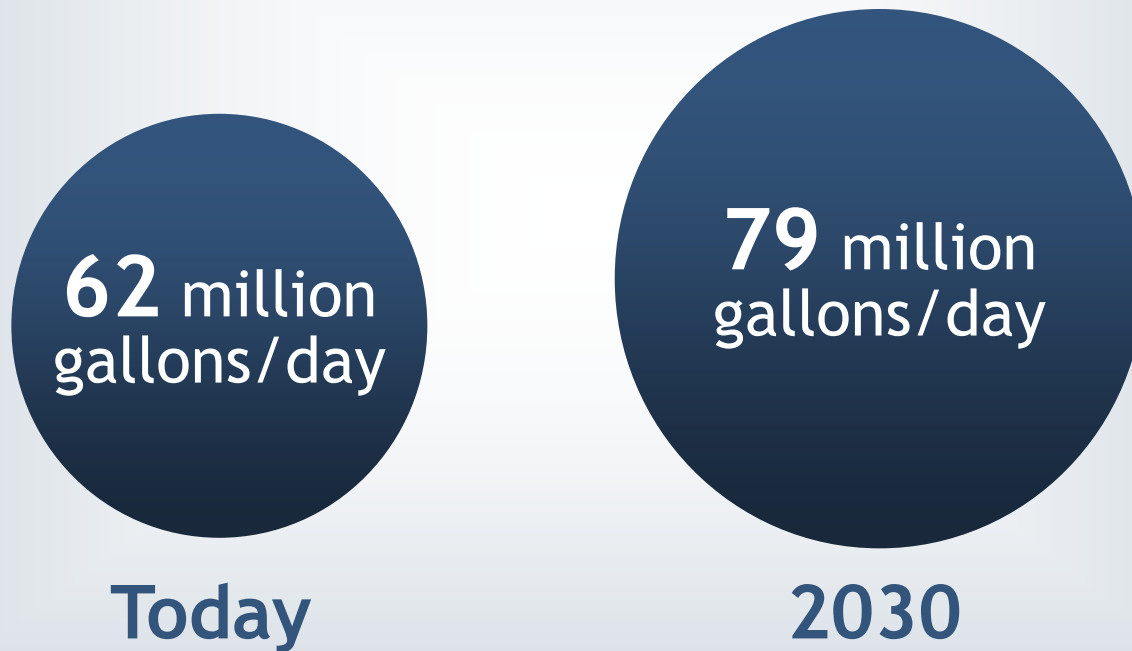


4,000 miles roads



Identified Needs

Average daily water demand



Level of Service Standards

Such as:

- **Parks:** Provide a developed park or natural area within ½ mile from every household
- **Combined sewer:** Convey combined sewage to prevent releases to buildings or streets up to a 25-year storm frequency.



Project List

Major Capital Projects

Groundwater Wellfield Improvements	2018-33	\$12 million
Powell Butte Reservoir #3	2023-33	\$20 million

Capital Programs

SDC Park Acquisitions	Ongoing	\$14.5 million
-----------------------	---------	----------------

Maintenance and other programs

Johnson Creek Restoration program	Ongoing	\$36 million
-----------------------------------	---------	--------------



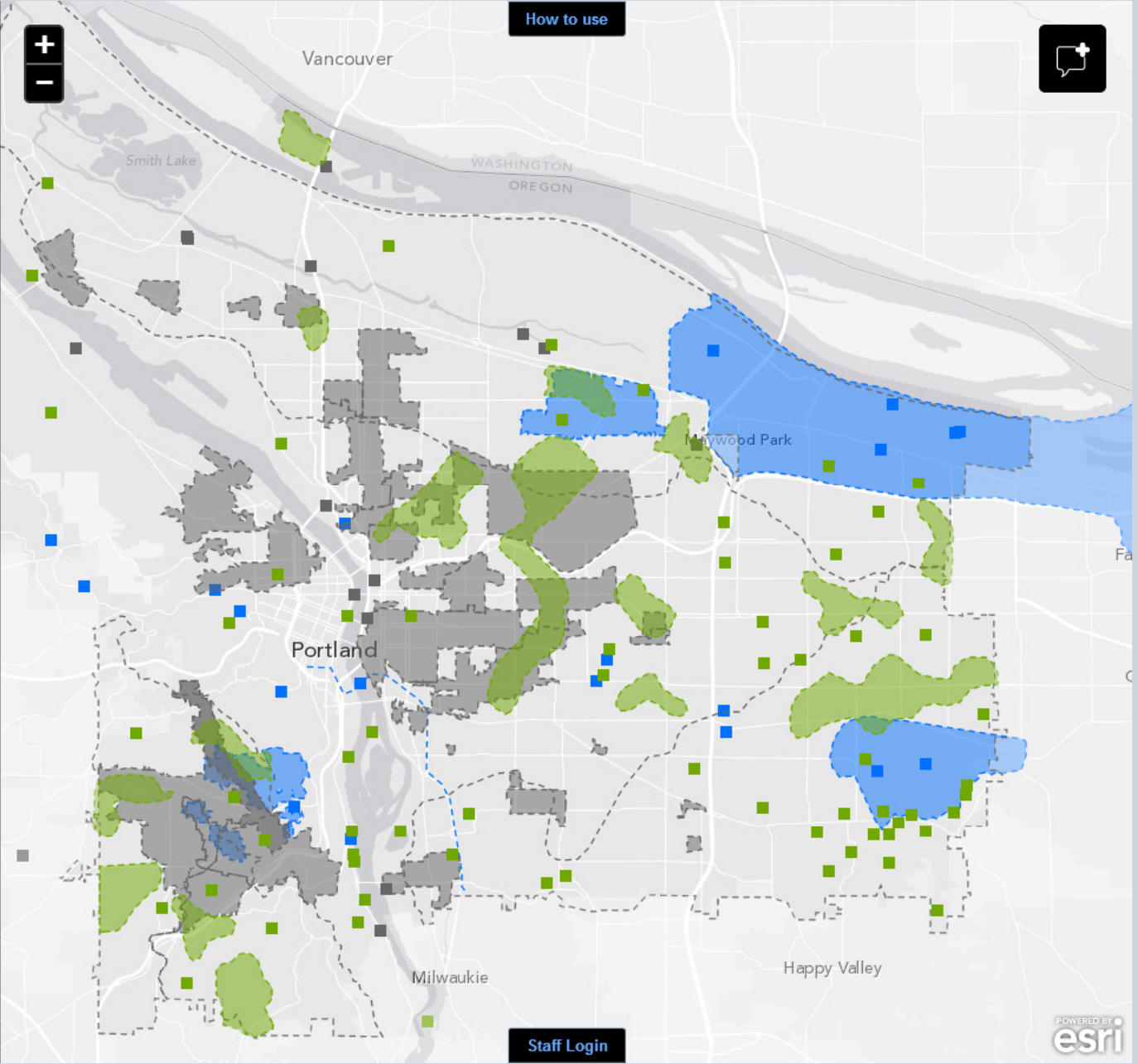
Discussion Layers

- OFF City Greenways >
- OFF Urban Habitat >
- OFF Stormwater >
- ON Water >
- ON Sewer / Stormwater >
- ON Parks >

Background Layers

- OFF Bike Access >
- OFF Flood Hazard >
- OFF Parks >
- OFF Zoning >
- OFF Earthquake Hazard >
- OFF Landslide Hazard >

Map Layers Working Draft Maps Legend



Get Involved!

At the Get Involved section of the
Comprehensive Plan Update website:
www.portlandoregon.gov/bps/pdxcompplan


Use the Map App:
www.portlandoregon.gov/bps/pdxcompplan/mapapp

Comment online:
www.portlandoregon.gov/bps/pdxcompplan

Send an email:
pdxcompplan@portlandoregon.gov

Write a letter:
Bureau of Planning and Sustainability
1900 SW 4th Avenue, Suite 7100
Portland, Oregon 97201

Call:
503-823-7700

 Facebook
PortlandBPS

 Twitter
@PortlandBPS



Next Steps

- **Comments on Working Draft Part 2**
 - December 31, 2013
- **Proposed Draft** – Spring 2014
- **Planning and Sustainability Commission**
- **Recommended Draft** – Summer 2014
- **City Council**
- **Adopted Plan** – Fall 2014





Websites

[www.portlandoregon.gov/bps/
pdxcompplan](http://www.portlandoregon.gov/bps/pdxcompplan)

[www.portlandoregon.gov/bps/
pdxcompplan/mapapp](http://www.portlandoregon.gov/bps/pdxcompplan/mapapp)



Bureau of Planning and Sustainability
Innovation. Collaboration. Practical Solutions.

