



East Burnside Mixed-Use

419 East Burnside Street Trinsic Residential Group

09/17/2013

130980

620 SW 5th Avenue, Suite 500
Portland, Oregon 97204
503.236.6000
www.myhregroup.com

©Myhre Group Architects, Inc. These drawings are the property of Myhre Group Architects and are not to be reproduced in any manner except with the prior written approval of Myhre Group Architects.

MGA
MYHRE GROUP ARCHITECTS

1



East Burnside Mixed-Use

419 East Burnside Street Trinsic Residential Group

09/17/2013

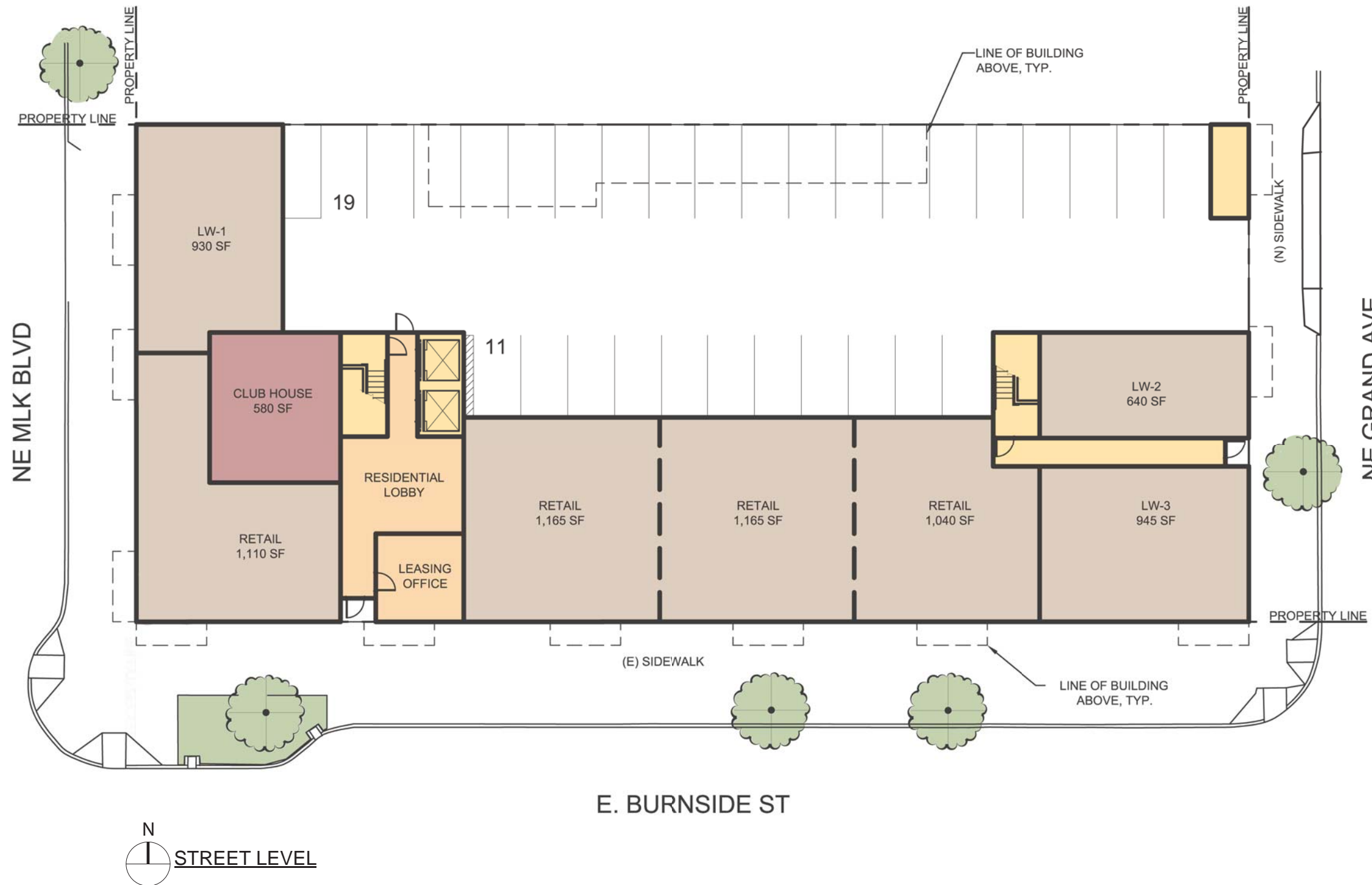
130980

620 SW 5th Avenue, Suite 500
Portland, Oregon 97204
503.236.6000
www.myhregroup.com

©Myhre Group Architects, Inc. These drawings are the property of Myhre Group Architects and are not to be reproduced in any manner except with the prior written approval of Myhre Group Architects.

MGA
MYHRE GROUP ARCHITECTS

2



SITE DEVELOPMENT SUMMARY

SITE AREA: 16,150 S.F.
(0.37 AC.)

BUILDING DATA

AREA: 87,477 GSF
 GROUND FLOOR 8,912 GSF
 SECOND FLOOR 15,713 GSF
 THIRD FLOOR 15,713 GSF
 FOURTH FLOOR 15,713 GSF
 FIFTH FLOOR 15,713 GSF
 SIXTH FLOOR 15,713 GSF
 SUB-TOTAL 87,477 GSF

F.A.R. 5.42:1
 STORIES 6

TOTAL UNIT COUNT: 118
 Studio 15 (13%)
 One-Bed 75 (65%)
 Two-Bed 25 (22%)
 SUB-TOTAL: 115
 Live-Work 3

PARKING DATA

STANDARD SPACES: 28 (93%)
 COMPACT SPACES: 0 (0.0%)
 HANDICAP SPACES: 2 (7%)
 TOTAL PARKING: 30 (.26 PER UNIT)

East Burnside Mixed-Use

419 East Burnside Street Trinsic Residential Group

SCALE: 1" = 20'-0"
 09/17/2013

130980

620 SW 5th Avenue, Suite 500
 Portland, Oregon 97204
 503.236.6000
 www.myhregroup.com

©Myhre Group Architects, Inc. These drawings are the property of Myhre Group Architects and are not to be reproduced in any manner except with the prior written approval of Myhre Group Architects.

MGA
 MYHRE GROUP ARCHITECTS

3



N
 TYPICAL FLOOR LEVEL (2-6)

East Burnside Mixed-Use

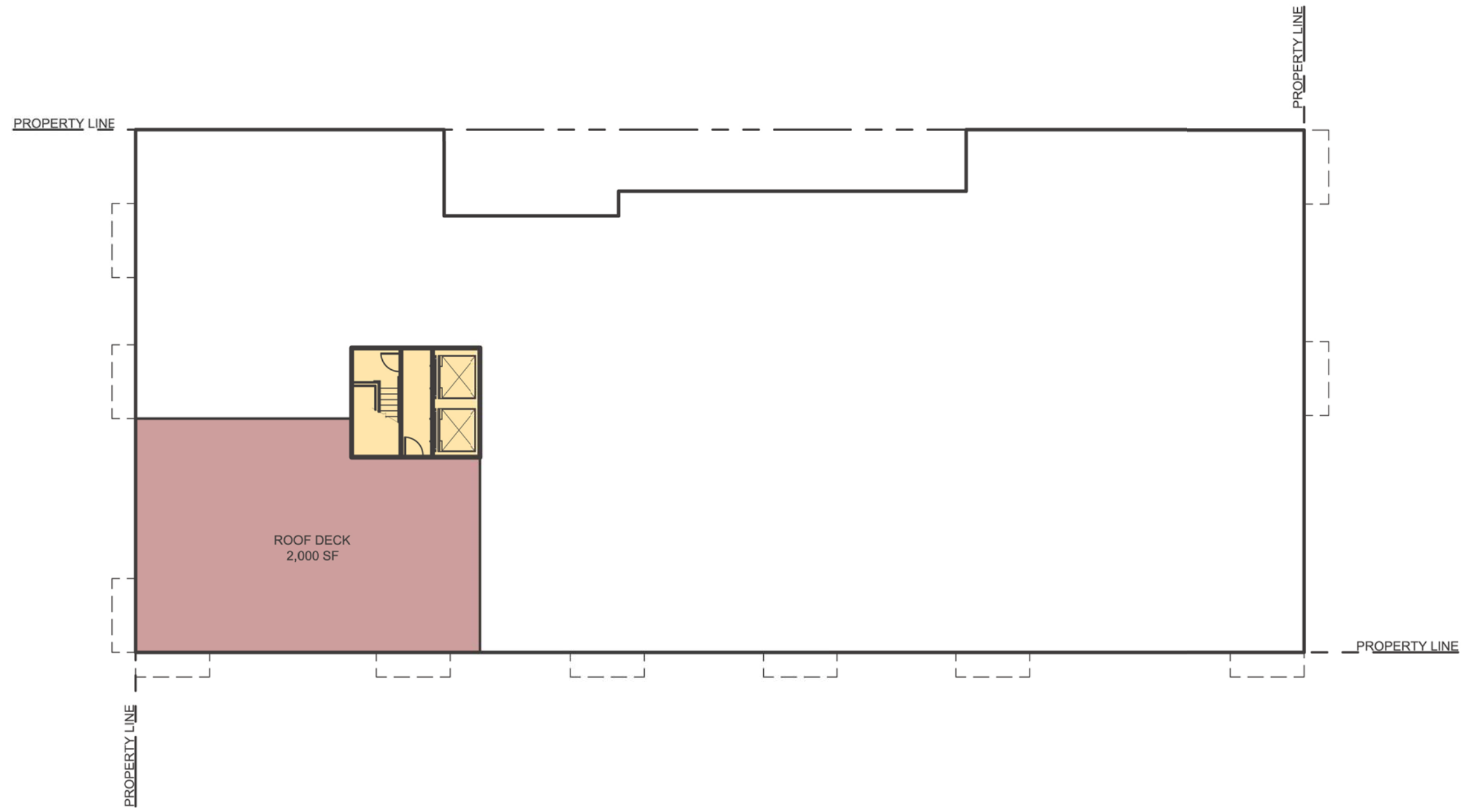
419 East Burnside Street Trinsic Residential Group
 SCALE: 1" = 20'-0"
 09/17/2013

130980

620 SW 5th Avenue, Suite 500
 Portland, Oregon 97204
 503.236.6000
 www.myhregroup.com

©Myhre Group Architects, Inc. These drawings are the property of Myhre Group Architects and are not to be reproduced in any manner except with the prior written approval of Myhre Group Architects.





East Burnside Mixed-Use

419 East Burnside Street Trinsic Residential Group
 SCALE: 1" = 20'-0"
 09/17/2013

130980

620 SW 5th Avenue, Suite 500
 Portland, Oregon 97204
 503.236.6000
 www.myhregroup.com

©Myhre Group Architects, Inc. These drawings are the property of Myhre Group Architects and are not to be reproduced in any manner except with the prior written approval of Myhre Group Architects.





SOUTH ELEVATION

East Burnside Mixed-Use

419 East Burnside Street Trinsic Residential Group

09/17/2013

130980

620 SW 5th Avenue, Suite 500
 Portland, Oregon 97204
 503.236.6000
 www.myhregroup.com

©Myhre Group Architects, Inc. These drawings are the property of Myhre Group Architects and are not to be reproduced in any manner except with the prior written approval of Myhre Group Architects.

MGA
 MYHRE GROUP ARCHITECTS

6



WEST ELEVATION



EAST ELEVATION

East Burnside Mixed-Use

419 East Burnside Street Trinsic Residential Group

09/17/2013

130980

620 SW 5th Avenue, Suite 500
Portland, Oregon 97204
503.236.6000
www.myhregroup.com

©Myhre Group Architects, Inc. These drawings are the property of Myhre Group Architects and are not to be reproduced in any manner except with the prior written approval of Myhre Group Architects.

MGA
MYHRE GROUP ARCHITECTS

7



PRECEDENT STUDIES

East Burnside Mixed-Use

419 East Burnside Street Trinsic Residential Group

09/17/2013

130980

620 SW 5th Avenue, Suite 500
 Portland, Oregon 97204
 503.236.6000
 www.myhregroup.com

©Myhre Group Architects, Inc. These drawings are the property of Myhre Group Architects and are not to be reproduced in any manner except with the prior written approval of Myhre Group Architects.

MGA
 MYHRE GROUP ARCHITECTS