



# Comprehensive Plan Update PSC

June 25, 2013



Bureau of Planning and Sustainability  
Innovation. Collaboration. Practical Solutions.



# Portland's Comprehensive Plan




## State-mandated, long-range plan

- prepare for and manage **growth**
- plan and coordinate major **investments**
- guide **decision-making** on land use, transportation, parks, sewer and water systems, natural resources, etc.



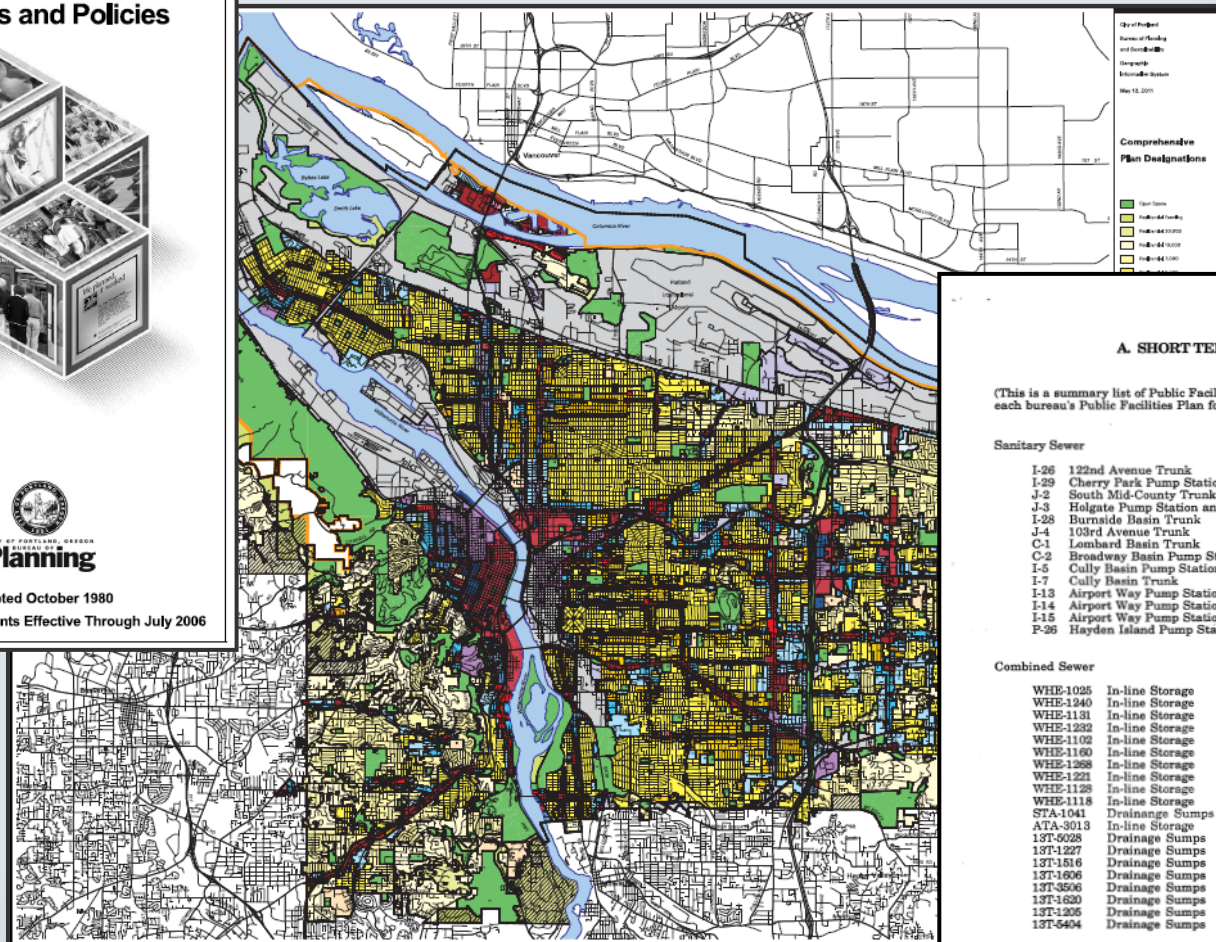
# Comprehensive Plan Components

**Comprehensive Plan Goals and Policies**

**Planning**

Adopted October 1980  
Includes Amendments Effective Through July 2006



161770

**A. SHORT TERM (Exhibit C)**

(This is a summary list of Public Facilities Plan projects. Please refer to each bureau's Public Facilities Plan for detail on each project.)

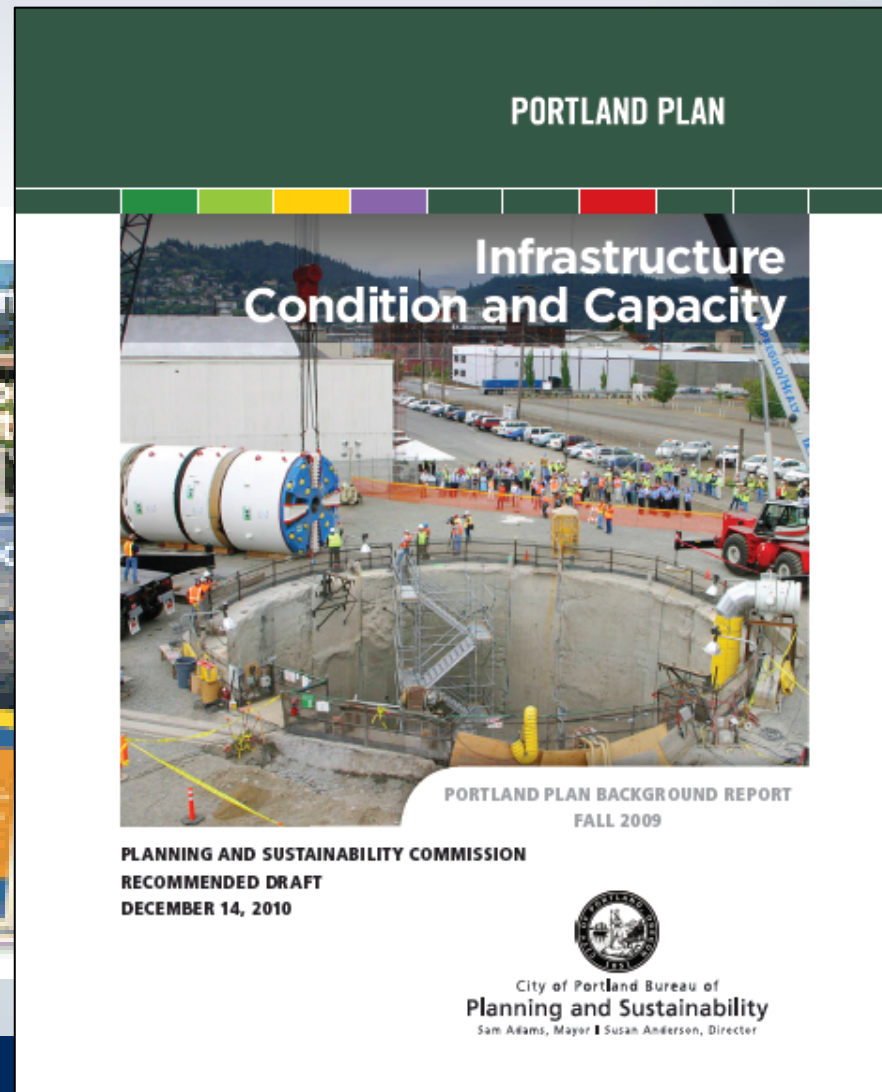
**Sanitary Sewer**

- I-26 122nd Avenue Trunk
- I-29 Cherry Park Pump Station and Trunk
- J-2 South Mid-County Trunk
- J-3 Holgate Pump Station and Pump Line
- I-23 Burnside Basin Trunk
- J-4 103rd Avenue Trunk
- C-1 Lombard Basin Trunk
- C-2 Broadway Basin Pump Station and Trunk
- I-5 Cully Basin Pump Station and Trunk
- I-7 Cully Basin Trunk
- I-13 Airport Way Pump Station and Trunk
- I-14 Airport Way Pump Station and Trunk
- I-15 Airport Way Pump Station and Trunk
- P-26 Hayden Island Pump Station and Pressure Line

**Combined Sewer**

- WHE-1025 In-line Storage
- WHE-1240 In-line Storage
- WHE-1131 In-line Storage
- WHE-1232 In-line Storage
- WHE-1102 In-line Storage
- WHE-1160 In-line Storage
- WHE-1268 In-line Storage
- WHE-1221 In-line Storage
- WHE-1128 In-line Storage
- WHE-1118 In-line Storage
- STA-1041 Drainage Sumps
- ATA-5013 In-line Storage
- 13T-5028 Drainage Sumps
- 13T-1227 Drainage Sumps
- 13T-1516 Drainage Sumps
- 13T-1606 Drainage Sumps
- 13T-3506 Drainage Sumps
- 13T-1620 Drainage Sumps
- 13T-1205 Drainage Sumps
- 13T-5404 Drainage Sumps

# Background Reports



Bureau of Planning and Sustainability  
Innovation. Collaboration. Practical Solutions.

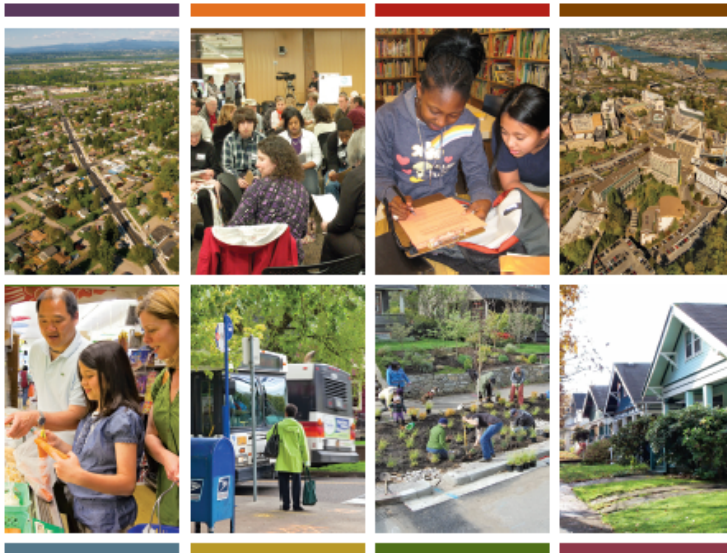


# Working Draft Part 1

## COMPANION GUIDE

to the Comprehensive Plan Working Draft Part 1

*This Companion Guide is designed to help you navigate through the Working Draft Part 1 of the Comprehensive Plan. It introduces the main ideas of the plan, and provides a place to jot down notes and comments as you review the draft.*



### Vision

*Portland is a prosperous, educated, healthy, equitable and resilient city where everyone has access to opportunity and is engaged in shaping the decisions that affect their lives. Our thriving economy supports the prosperity of our diverse population. Portlanders are connected to their city, their communities, and nature and the city sustains healthy neighborhoods, watersheds and families. Our distinct neighborhoods and vibrant downtown are safe, energizing civic and cultural spaces. Our diverse population, innovative businesses and forward-thinking leaders work together to ensure livability for all.*

Portland's Comprehensive Plan Update  
For more information, visit:  
[www.portlandoregon.gov/bps/pdxcompplan](http://www.portlandoregon.gov/bps/pdxcompplan)



Bureau of Planning and Sustainability  
Innovation. Collaboration. Practical Solutions.  
City of Portland Oregon  
Christie Mackey, Mayor | Pamela Anderson, Director



Printed on 100% post-consumer recycled paper.

## CITY OF PORTLAND Comprehensive Plan

Prosperous | Educated | Healthy | Equitable | Resilient

## Working Draft

PART 1  
JANUARY 2013



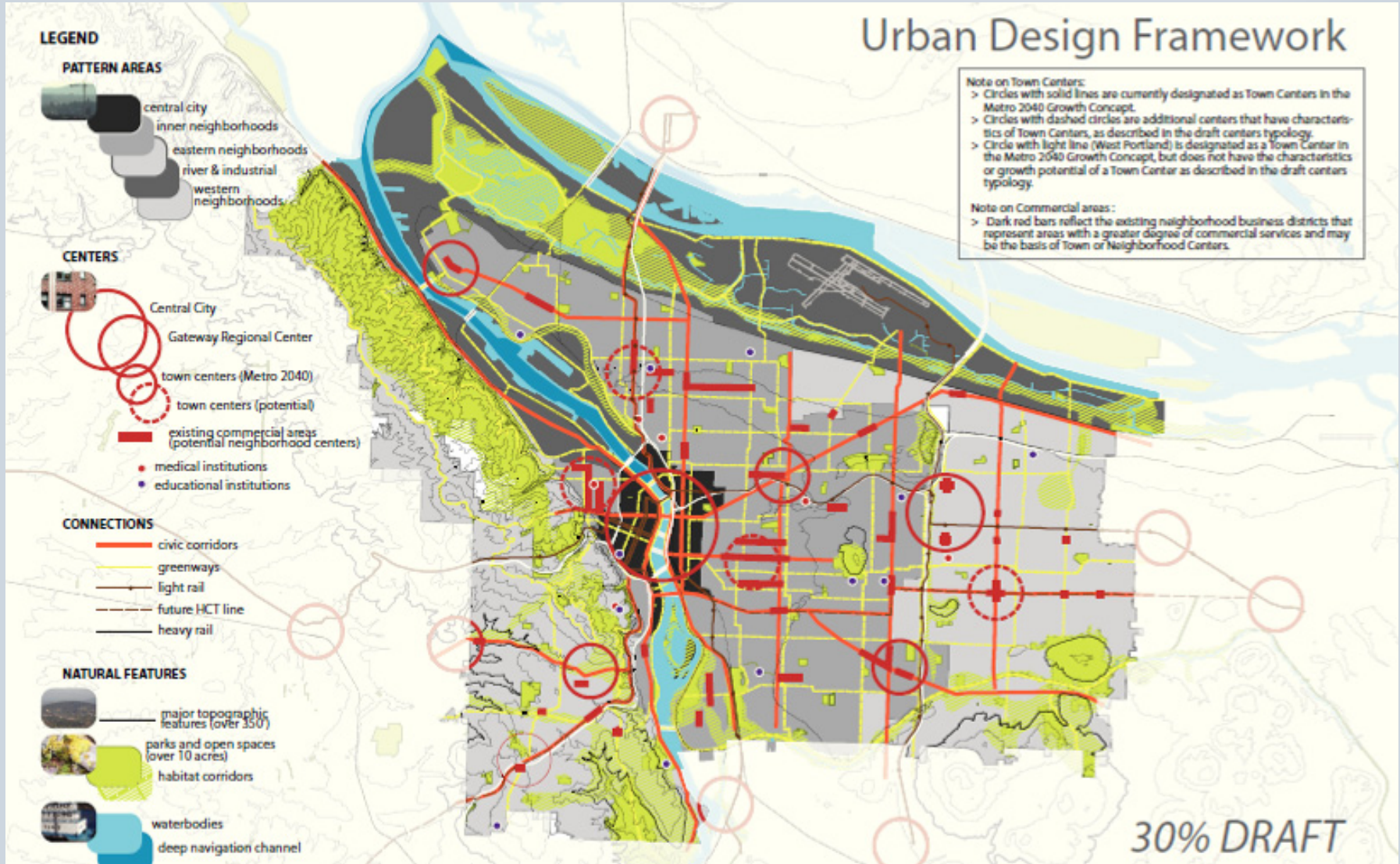
Bureau of Planning and Sustainability  
Innovation. Collaboration. Practical Solutions.



Bureau of Planning and Sustainability  
Innovation. Collaboration. Practical Solutions.



# Urban Design Framework



# Growth Scenarios Report



- Starting point for community discussion on **how and where** Portland will accommodate future growth.
- Evaluates different patterns of growth against **performance measures** from the Portland Plan.
- Provides **information and methodology** to help identify ‘preferred’ growth pattern.

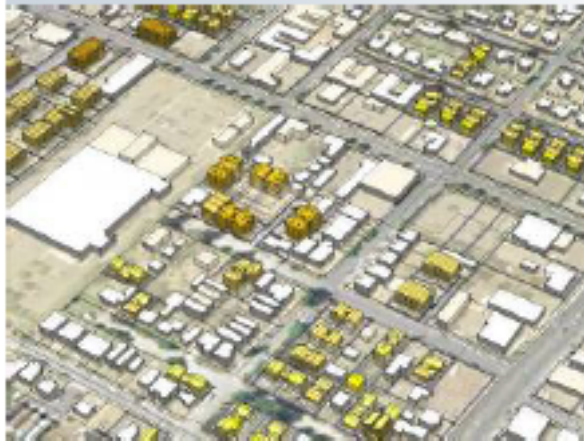
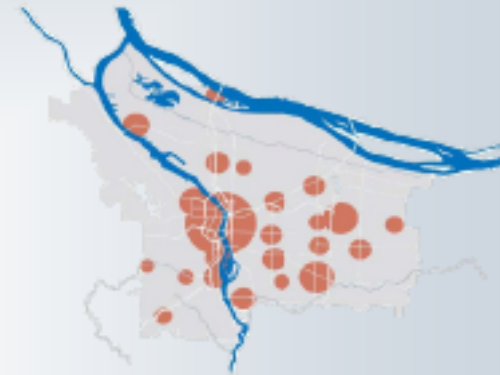
# Performance Measures

Complete Neighborhoods	Tree Canopy
Access to Frequent Transit	Watershed Health
Access to Family Friendly Bike Network	Vehicle Miles Traveled
Housing Mix	Mode Split
Housing Affordability	Carbon/GHG Emissions
Risk of Displacement/Gentrification	Access to Family Wage Jobs
Parks & Natural Area Access	





# Comparing Growth Patterns



Default Growth Scenario

Corridor Growth Scenario

Hubs Growth Scenario



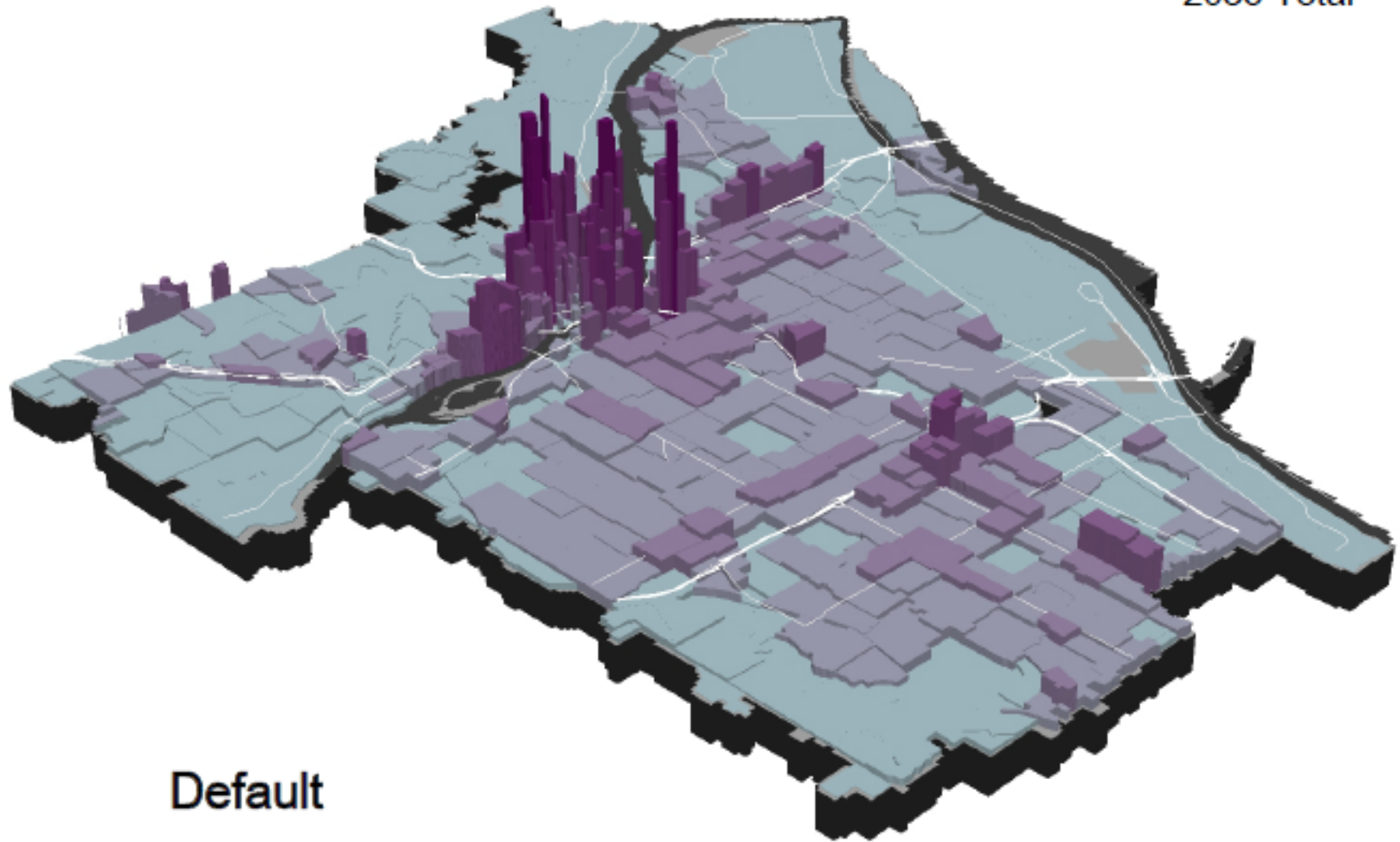
# Comparing Growth Patterns



Bureau of Planning and Sustainability  
Innovation. Collaboration. Practical Solutions.



2035 Total



Default

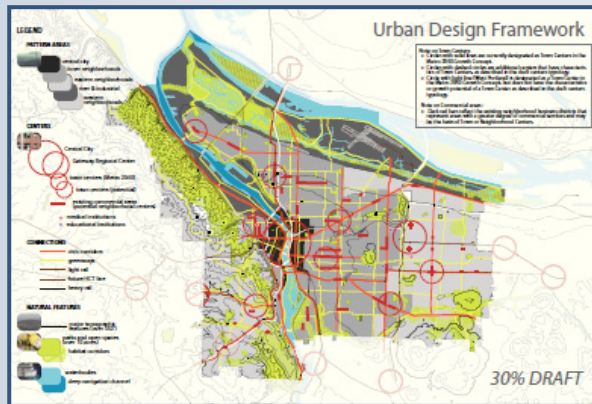


Bureau of Planning and Sustainability  
Innovation. Collaboration. Practical Solutions.

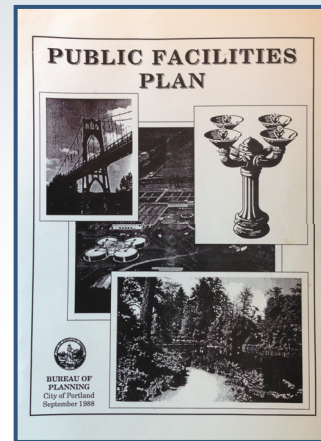


# Working Draft Part 2

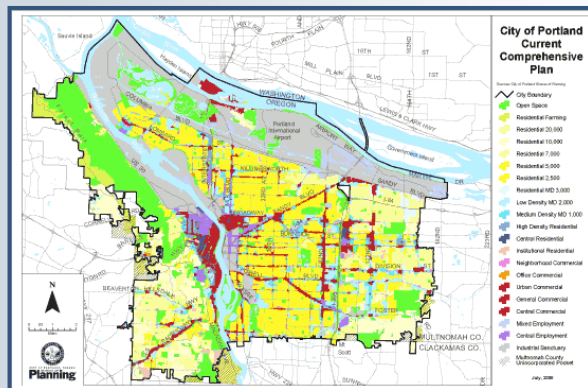
Draft updates to:



Urban Design Framework



Citywide Systems Plan



Land Use Map\*

Working Maps  
*a tool for public discussion*



## Working Draft Part 2

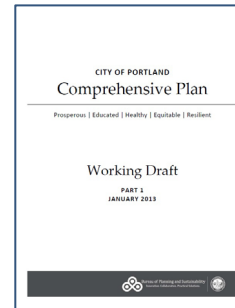
Urban Design Framework  
Land Use Map  
Citywide Systems Plan

Working Maps  
*a tool for public discussion*

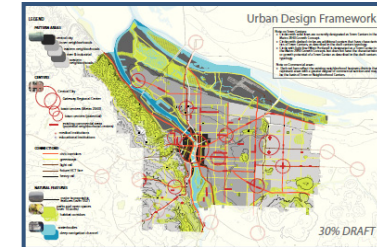
Summer 2013

Public review  
& workshops  
Fall 2013

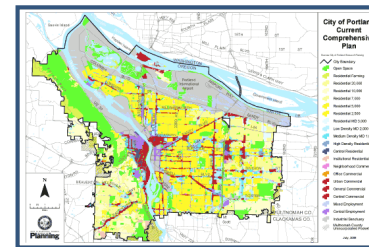
## Proposed Draft



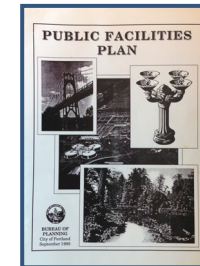
Goals & Policies



Urban Design Framework



Land Use Map

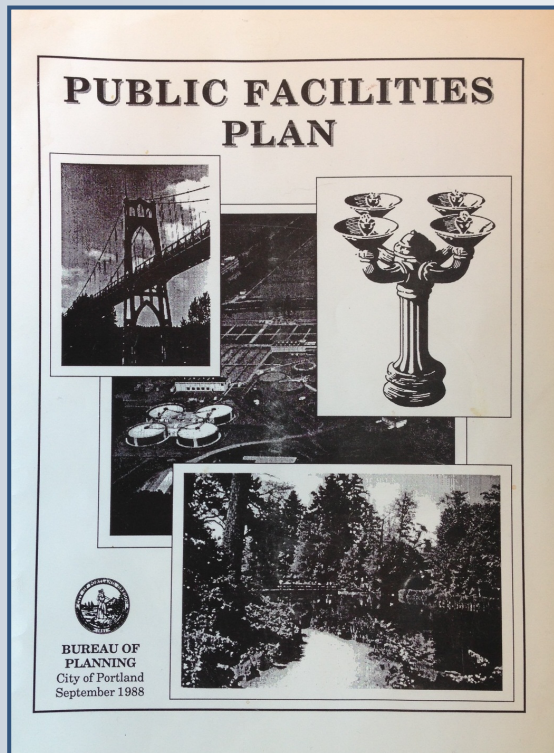


CSP

Winter 2013/14



# Citywide Systems Plan & List of Significant Projects



*The City's existing public facilities plan, adopted in 1989.*

Long-term plan for meeting the **infrastructure needs** of residential and employment growth.

Updates the City's Public Facilities Plan.



# What must be included in a public facilities plan?



**Water**



**Sewer**

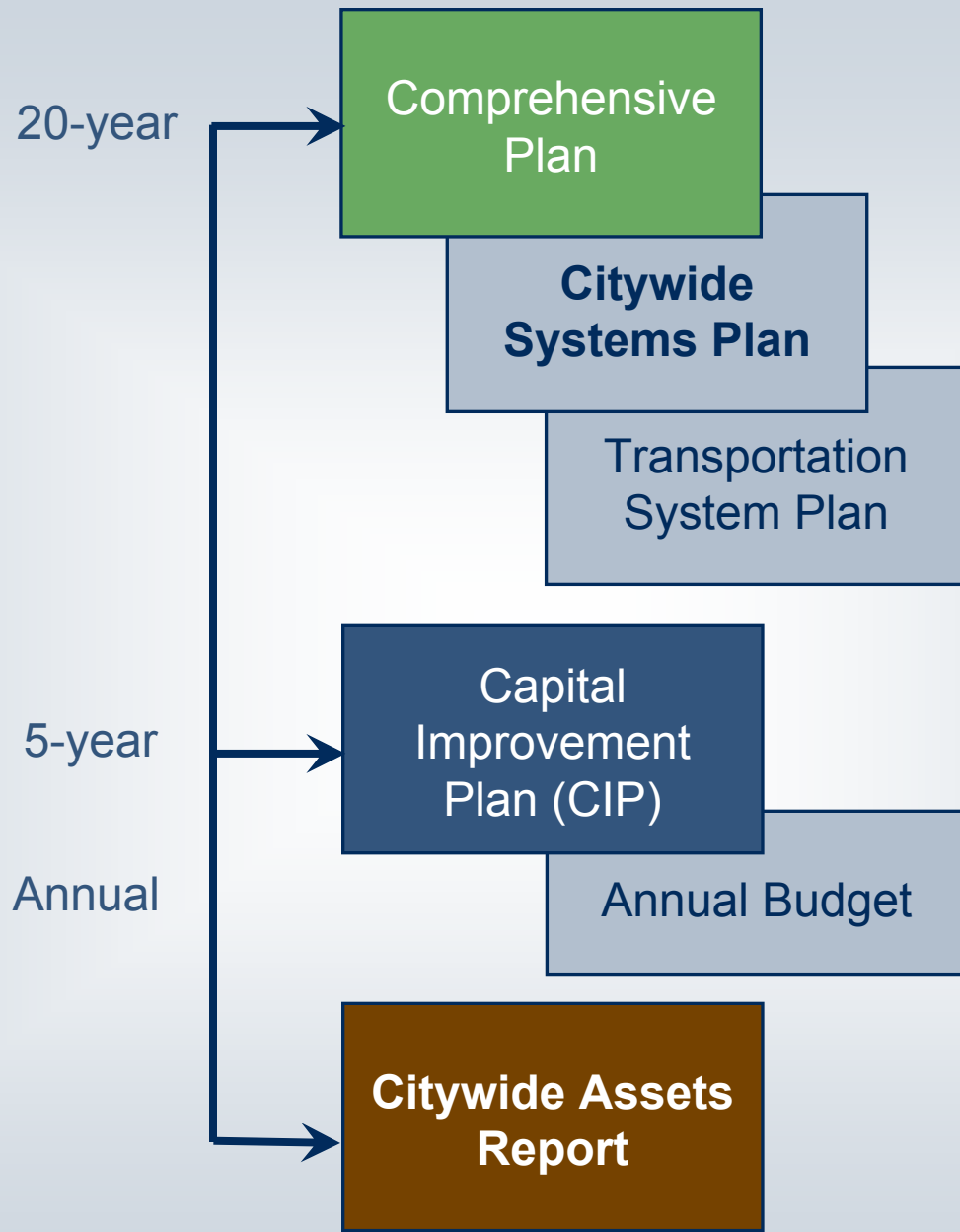
(sanitary and storm)



**Transportation**

Facilities needed to support designated land uses.







# The technical details..



Follows Comprehensive Plan process, including public review, PSC recommendation and City Council adoption.

Portion submitted to state in accordance with periodic review requirements.





# Questions?



Bureau of Planning and Sustainability  
Innovation. Collaboration. Practical Solutions.

