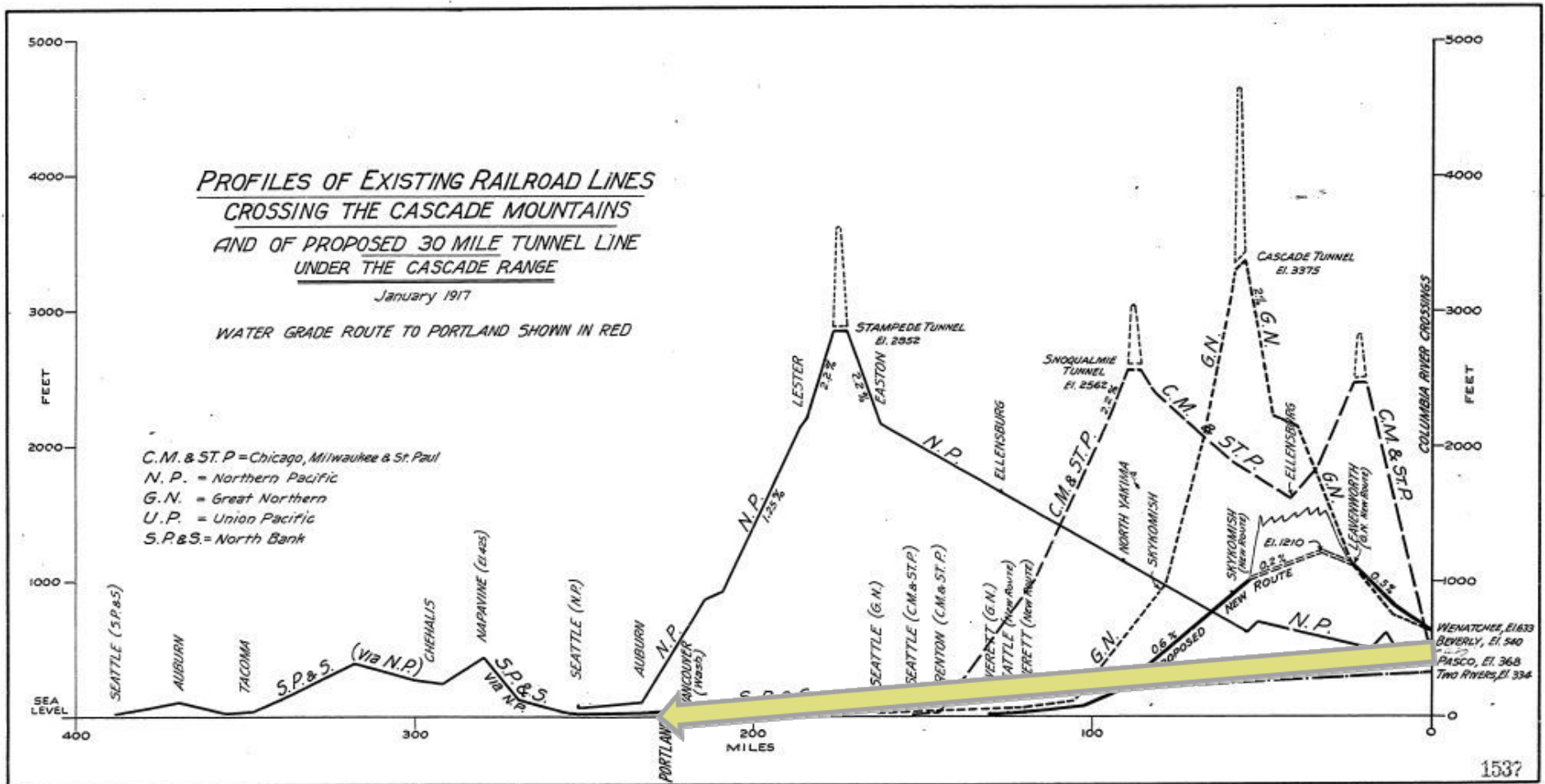


Portland's Marine Cargo Market

March 21, 2013

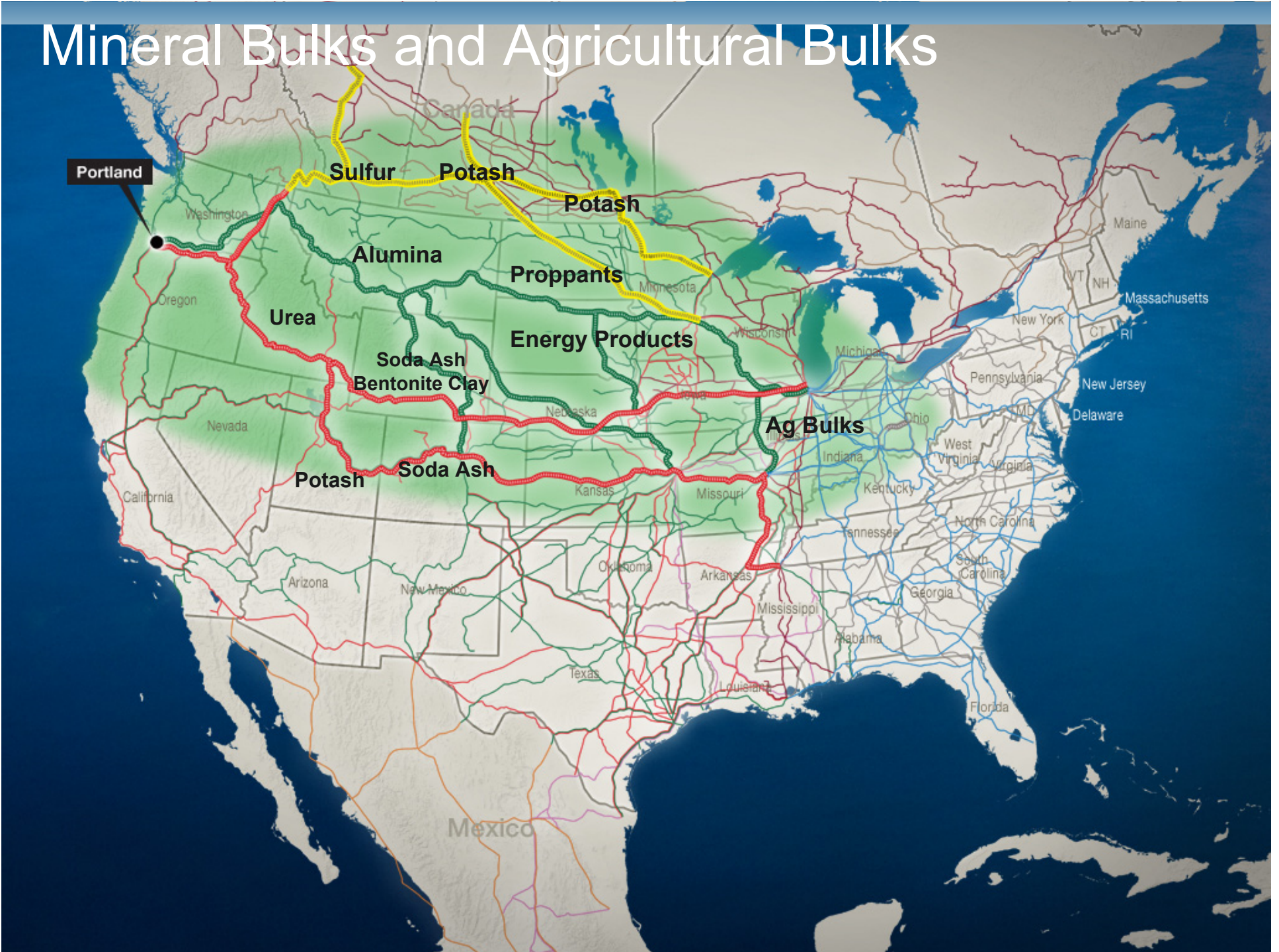
Historical natural advantage



Exceptional Rail links to Portland's Hinterland



Mineral Bulks and Agricultural Bulks



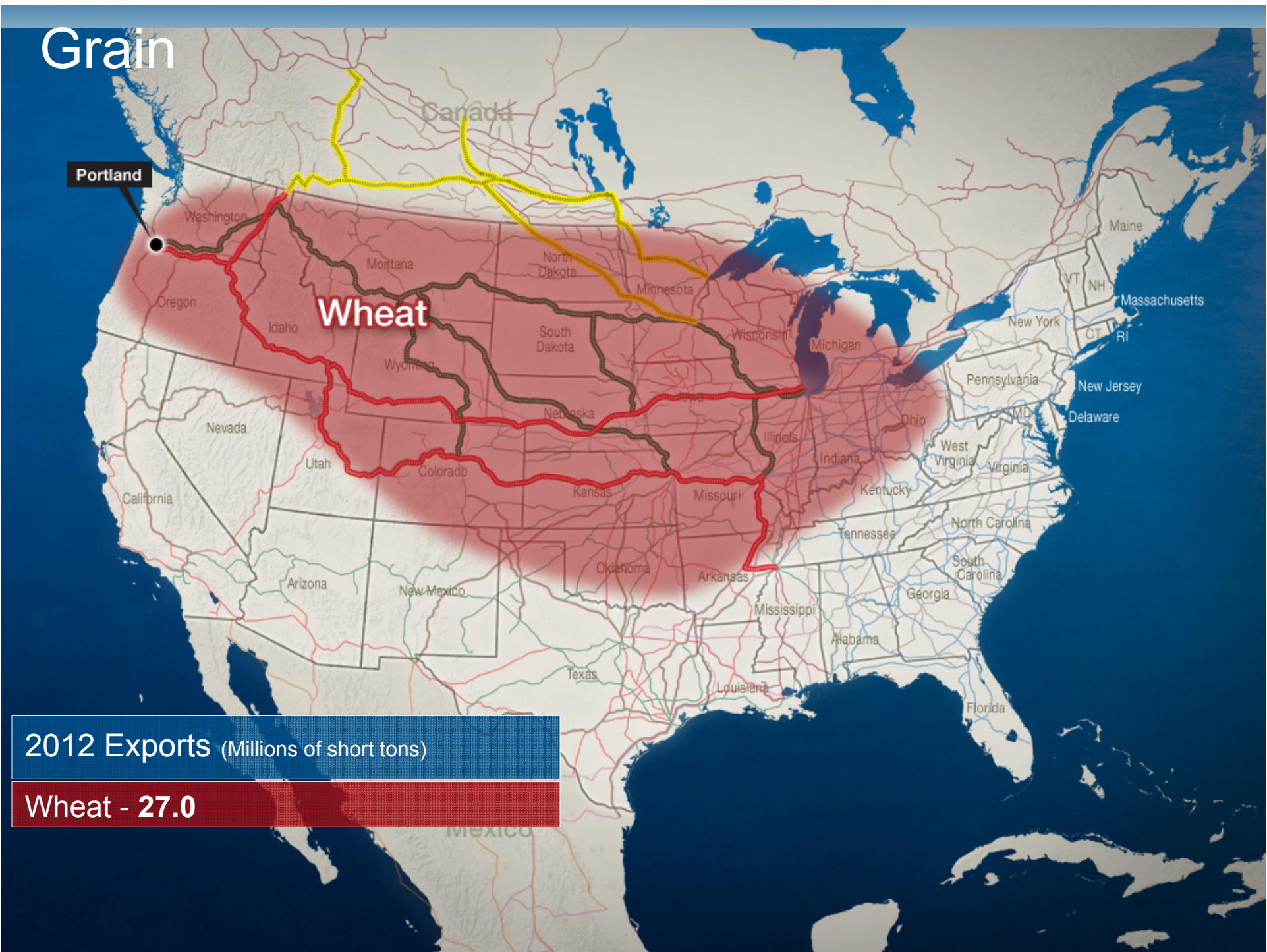
Grain

Portland

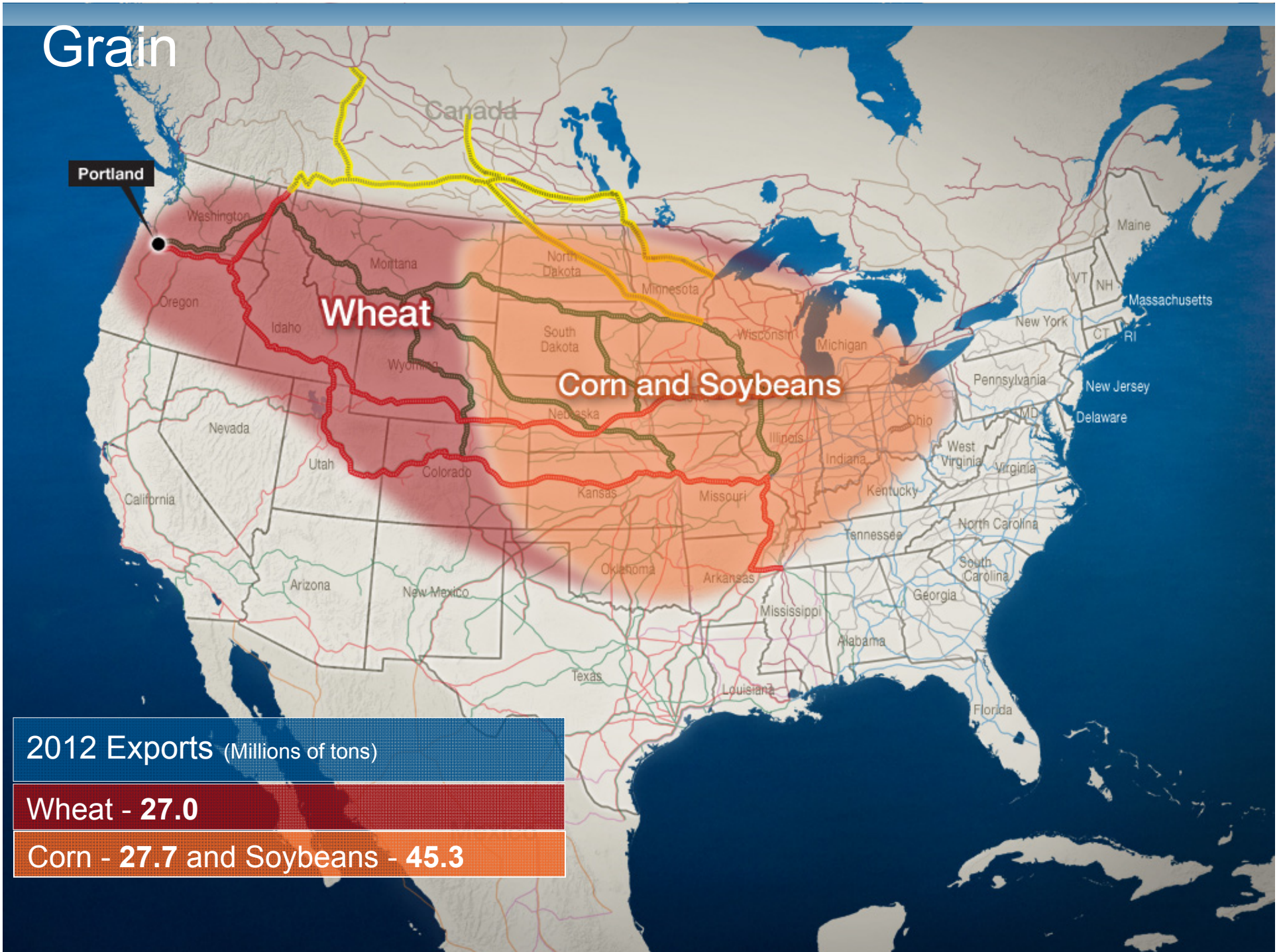
Wheat

2012 Exports (Millions of short tons)

Wheat - 27.0



Grain



2012 Exports (Millions of tons)

Wheat - 27.0

Corn - 27.7 and Soybeans - 45.3

Grain

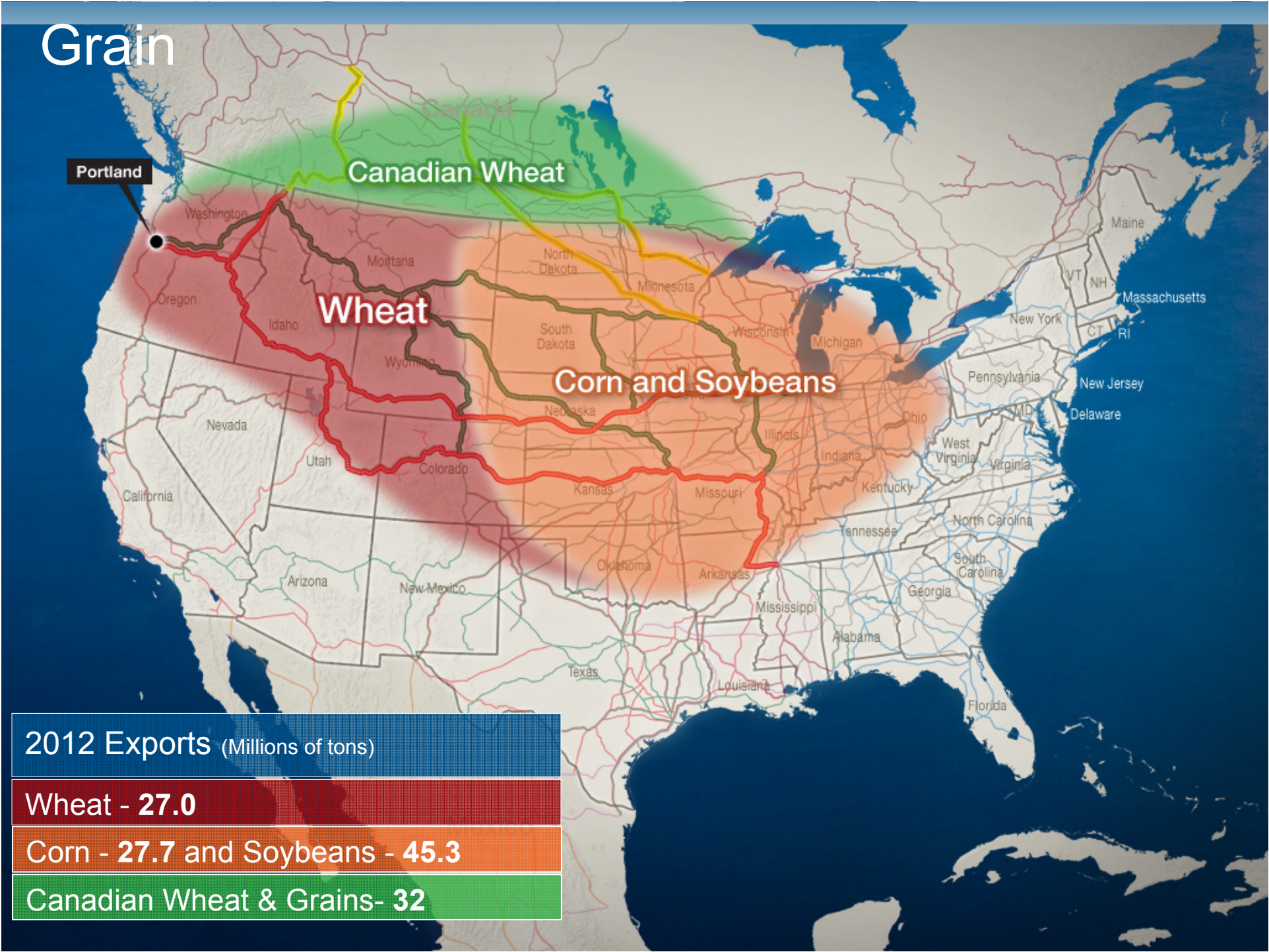
Portland

Canadian Wheat

Wheat

Corn and Soybeans

2012 Exports (Millions of tons)
Wheat - 27.0
Corn - 27.7 and Soybeans - 45.3
Canadian Wheat & Grains- 32



Grain

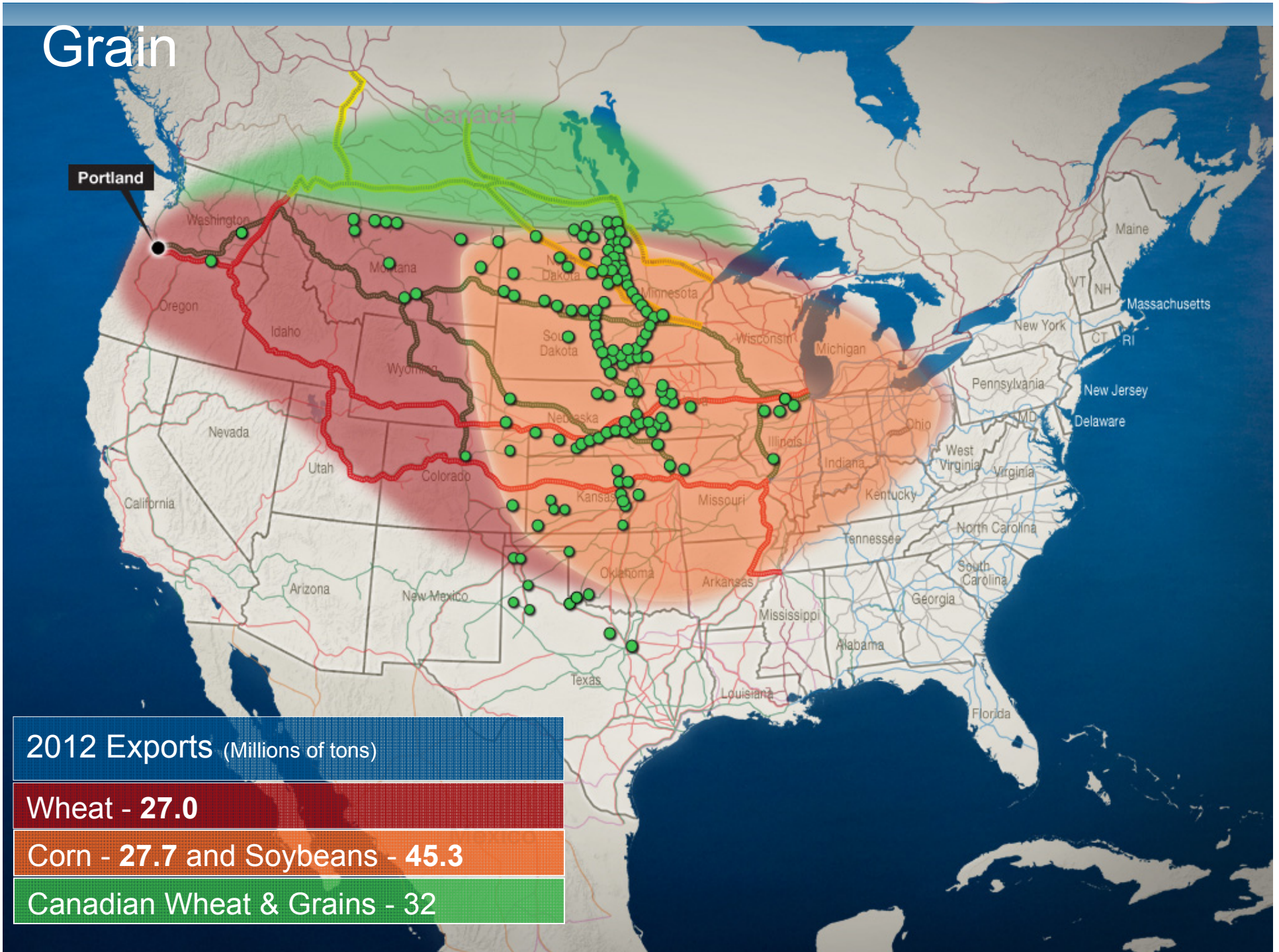
Portland

2012 Exports (Millions of tons)

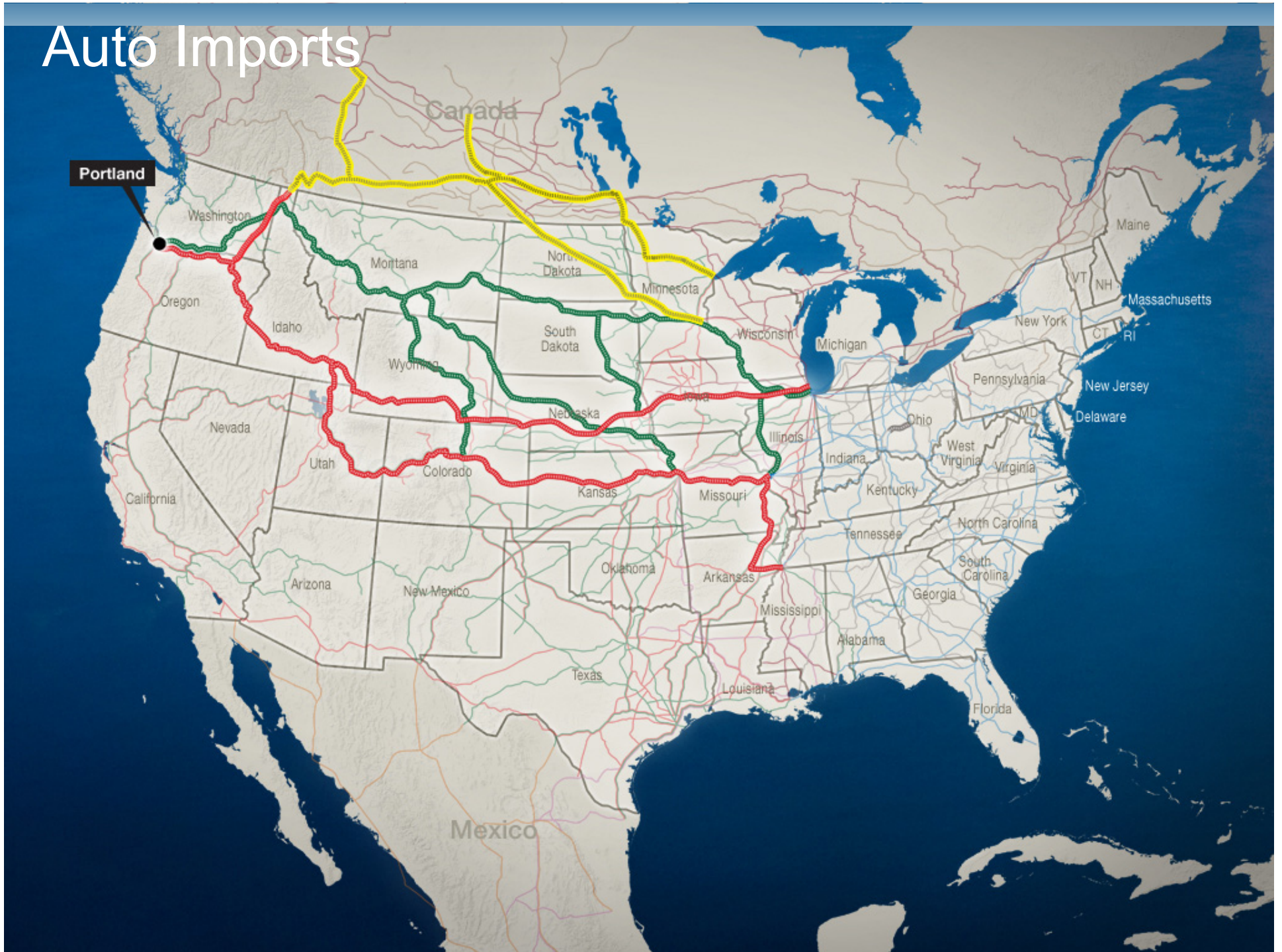
Wheat - 27.0

Corn - 27.7 and Soybeans - 45.3

Canadian Wheat & Grains - 32



Auto Imports



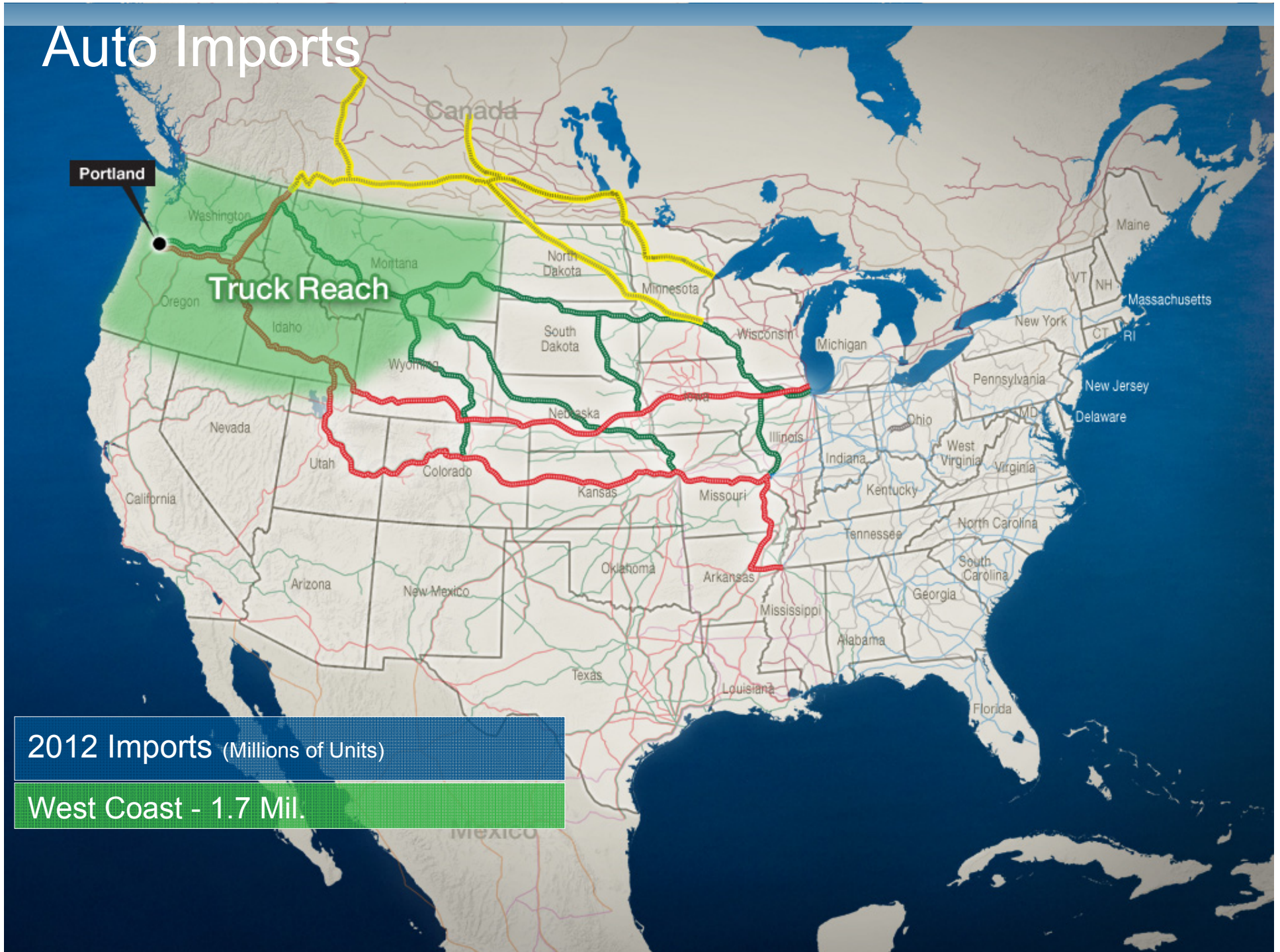
Auto Imports

Portland

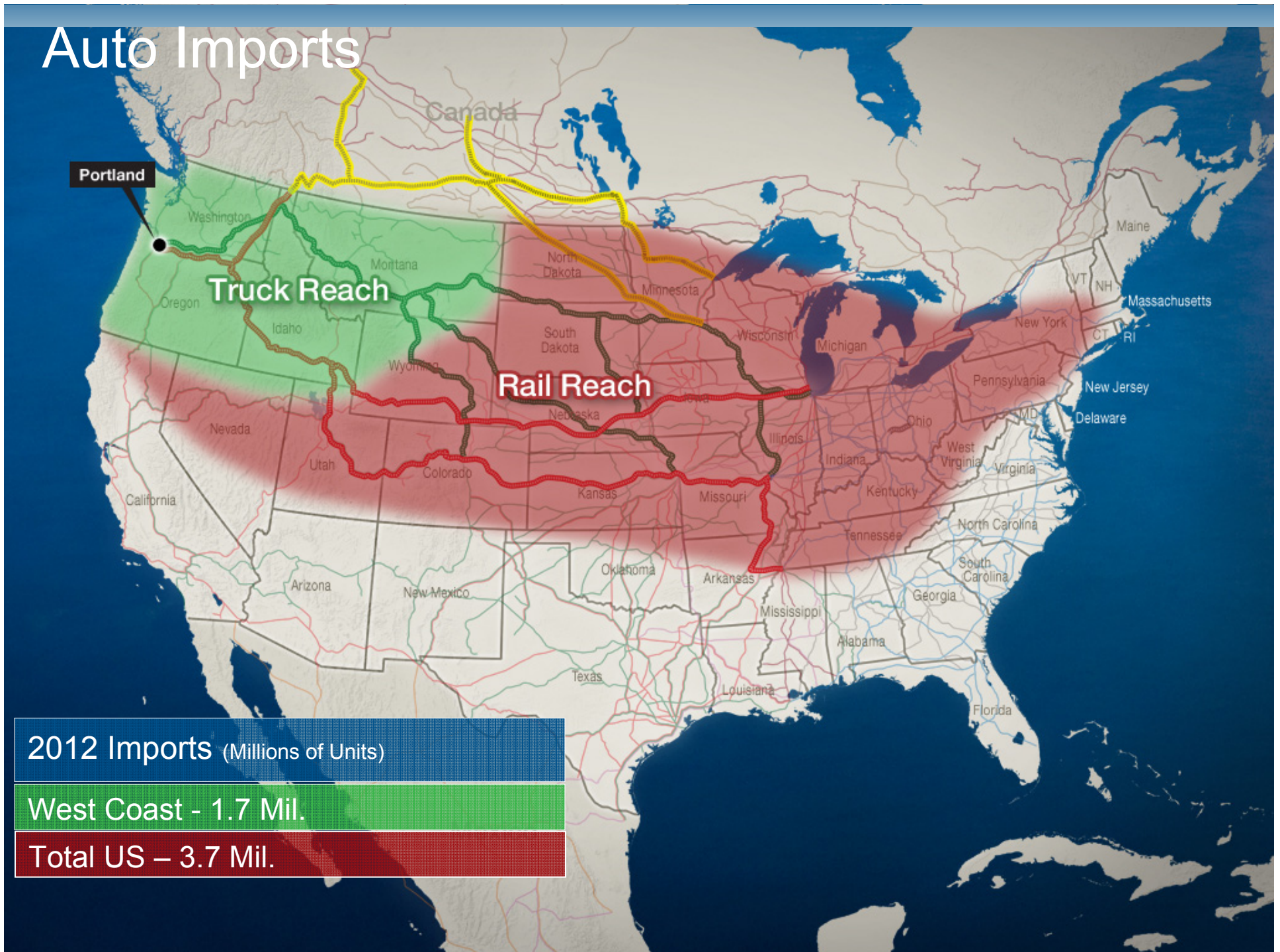
Truck Reach

2012 Imports (Millions of Units)

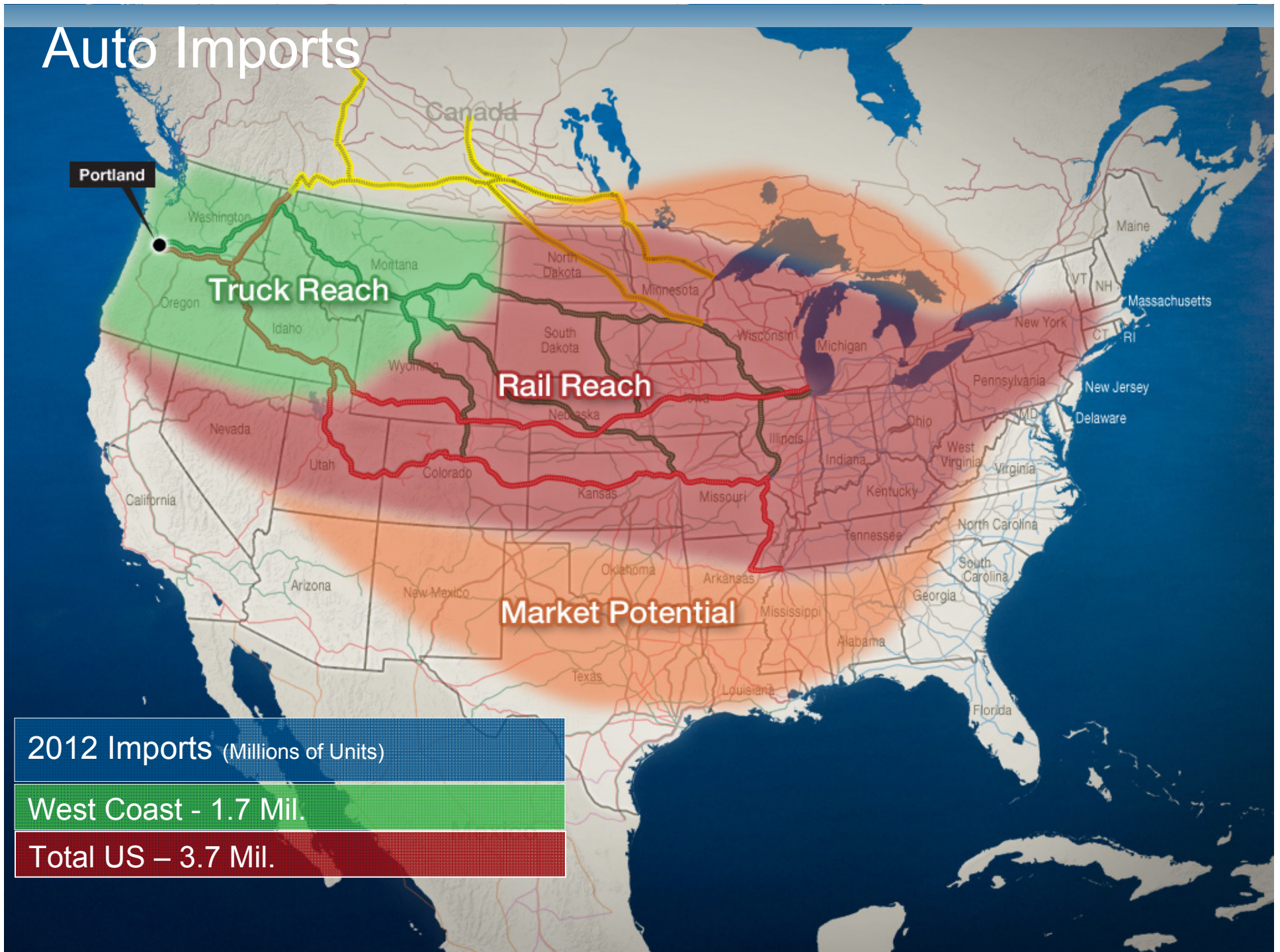
West Coast - 1.7 Mil.



Auto Imports



Auto Imports



2012 Imports (Millions of Units)

West Coast - 1.7 Mil.

Total US - 3.7 Mil.

Auto Exports



Auto Exports



Opportunities come in cycles

- Nearly \$1 billion in port terminal & infrastructure investment in last 2 years in 16 projects
- Investment creates the impetus for environmental enhancement, efficiencies, and sustained competitive advantages
- Impact & ripple effect in local & regional economy
 - Providing desired services in Portland
 - Sustaining jobs throughout the PNW
 - Improving the health & climate of the harbor



Walnut Park
Only \$40
A Front Foot, 1909

Brocklyn

Now Called
Portland's Business
Center,
1909



Above Portrait John Jacob Astor

This Picture Shows Future Portland,---The New York of The Pacific---as depicted by

Above Portrait W. M. Killingsworth

W. M. KILLINGSWORTH

Central Office, Walnut Park.

Suburban Office, 538 Chamber of Commerce.

Phone Main 7974

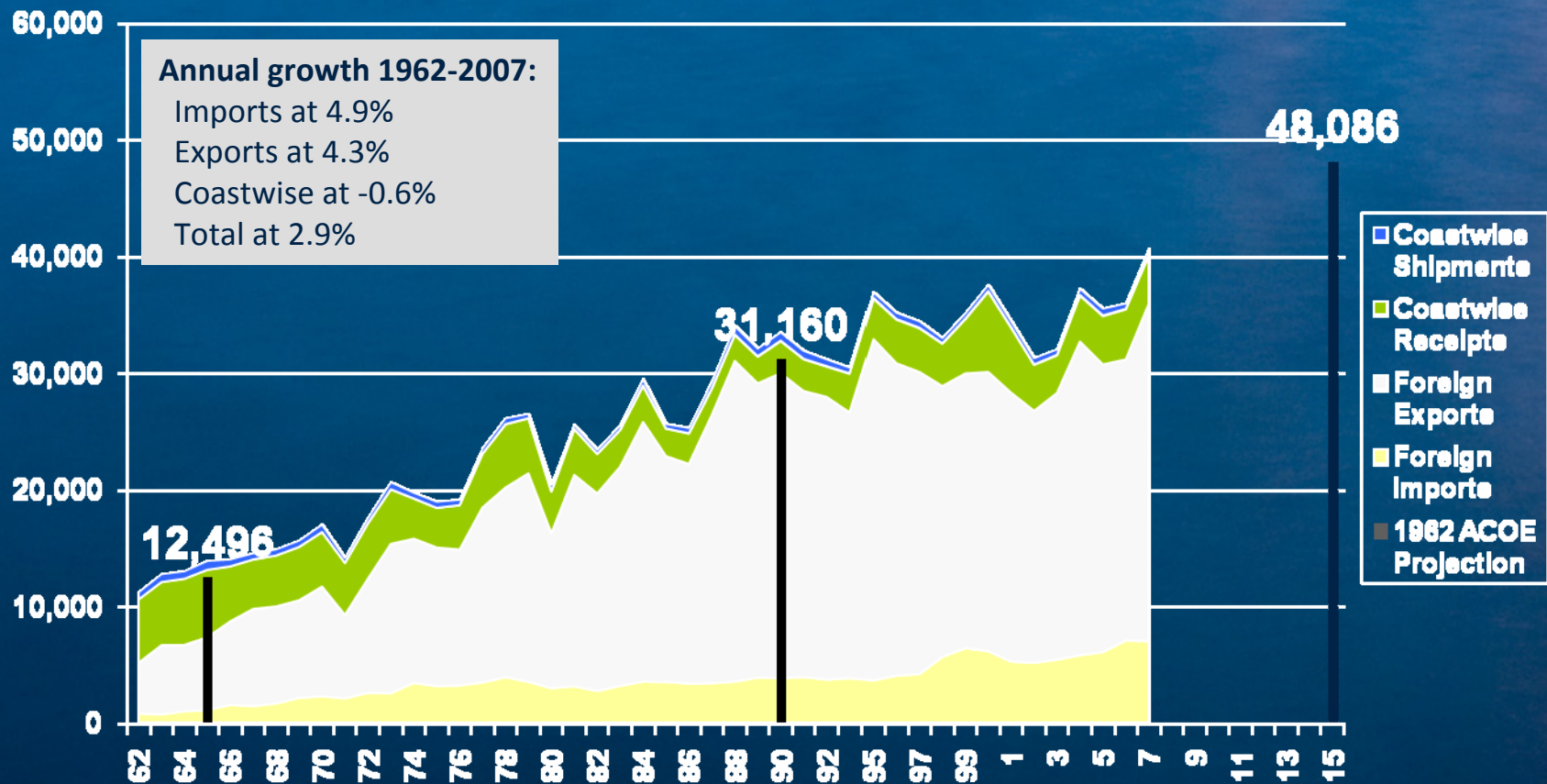
Rivergate Today



 **PORT OF PORTLAND**
Possibility. In every direction.

Columbia River Trends (1962-2007)

(1,000 Metric Tons) w/ 1962 ACOE Forecast superimposed



Sources: US Army Corps of Engineers Waterborne Commerce Statistics (in BST, 2009)

1962 ACOE Projection from Page 43, Chief of Engineers Report on Columbia and Lower Willamette Rivers, June 25, 1962