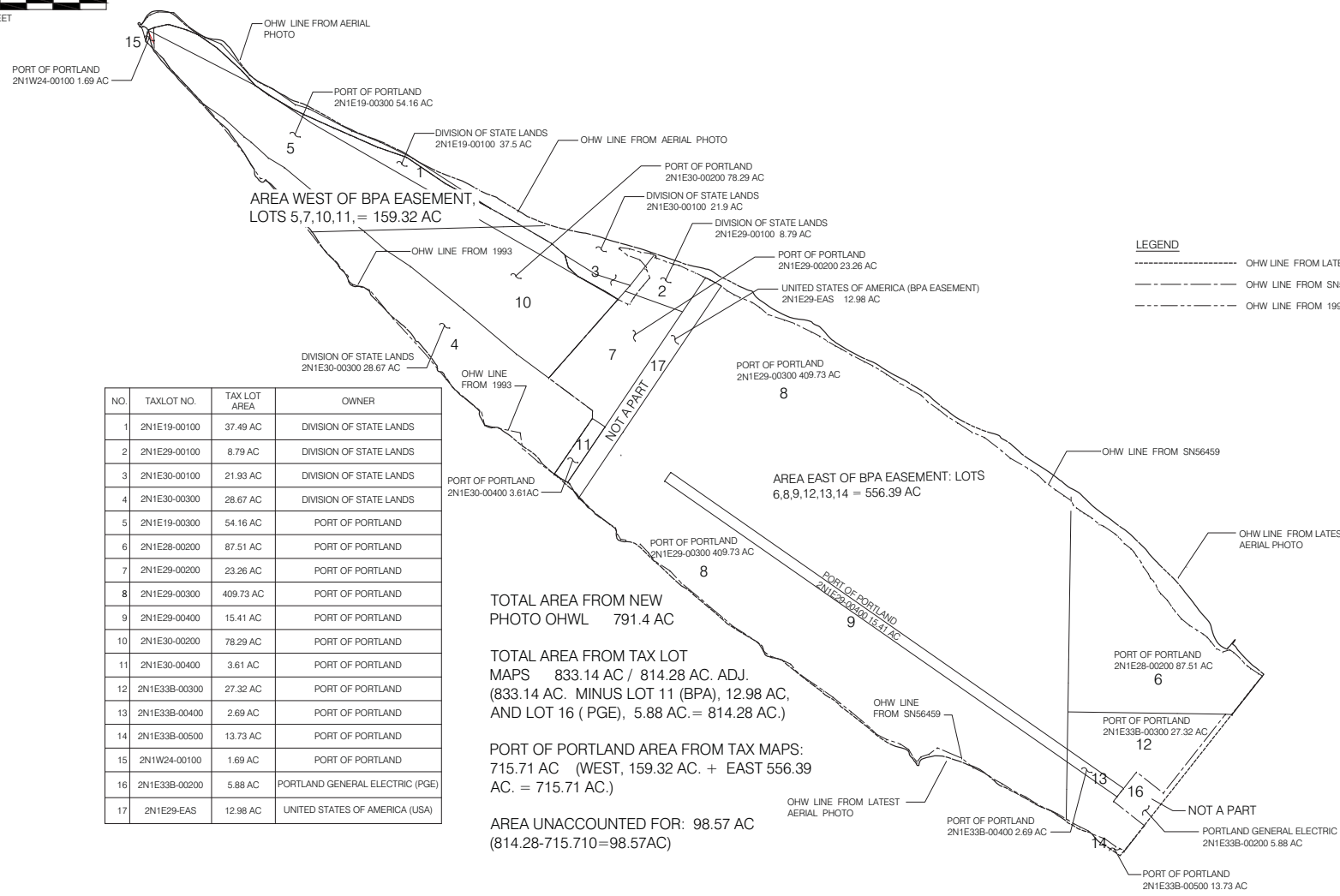


CAN YOU USE THE APPRALS? THE ADJACENT SAMPLES SHOW THREE DIFFERENT LEVELS OF SHADING. SETTINGS FOR VIEWING AND PRINTING DRAWING CONTENT ARE OPTIMIZED WHEN ALL THREE PLANES ARE VISIBLE. THIS GUIDANCE IS PROVIDED FOR REFERENCE ONLY.



LEGEND

- OHW LINE FROM LATEST AERIAL PHOTO
- OHW LINE FROM SN56459
- OHW LINE FROM 1993

NO.	TAXLOT NO.	TAX LOT AREA	OWNER
1	2N1E19-00100	37.49 AC	DIVISION OF STATE LANDS
2	2N1E29-00100	8.79 AC	DIVISION OF STATE LANDS
3	2N1E30-00100	21.93 AC	DIVISION OF STATE LANDS
4	2N1E30-00300	28.67 AC	DIVISION OF STATE LANDS
5	2N1E19-00300	54.16 AC	PORT OF PORTLAND
6	2N1E28-00200	87.51 AC	PORT OF PORTLAND
7	2N1E29-00200	23.26 AC	PORT OF PORTLAND
8	2N1E29-00300	409.73 AC	PORT OF PORTLAND
9	2N1E29-00400	15.41 AC	PORT OF PORTLAND
10	2N1E30-00200	78.29 AC	PORT OF PORTLAND
11	2N1E30-00400	3.61 AC	PORT OF PORTLAND
12	2N1E33B-00300	27.32 AC	PORT OF PORTLAND
13	2N1E33B-00400	2.69 AC	PORT OF PORTLAND
14	2N1E33B-00500	13.73 AC	PORT OF PORTLAND
15	2N1W24-00100	1.69 AC	PORT OF PORTLAND
16	2N1E29-00200	5.88 AC	PORTLAND GENERAL ELECTRIC (PGE)
17	2N1E29-EAS	12.98 AC	UNITED STATES OF AMERICA (USA)

TOTAL AREA FROM NEW PHOTO OHWL 791.4 AC

TOTAL AREA FROM TAX LOT MAPS 833.14 AC / 814.28 AC. ADJ.
(833.14 AC. MINUS LOT 11 (BPA), 12.98 AC, AND LOT 16 (PGE), 5.88 AC. = 814.28 AC.)

PORT OF PORTLAND AREA FROM TAX MAPS:
715.71 AC (WEST, 159.32 AC. + EAST 556.39 AC. = 715.71 AC.)

AREA UNACCOUNTED FOR: 98.57 AC
(814.28-715.71=98.57AC)

DRAFT



NO.	DATE	BY	REVISIONS	CHKD	APPV'D	NO.	DATE	BY	REVISIONS	CHKD	APPV'D



PORT OF PORTLAND
PORTLAND, OREGON

REGISTERED PROFESSIONAL LAND SURVEYOR
OREGON
THOMAS J. CONDON
7244
SIGNED: 12/31/2013
EXP: 12/31/2013

DESIGNED BY: T. CONDON
DRAWN BY: C. BIELANSKI
CHECKED BY: T. CONDON
DATE: N/A
SCALE: 1" = 600'

WEST HAYDEN ISLAND
TAX LOT AREA AND OWNERSHIP EXHIBIT

SUBMITTED BY: TOM CONDON
PROJECT SUPERVISOR

TYPE: DRAWING NO. EX WHI 2012-1
1/1 (SU-1)