



Portland Children's Levy Renewal

Portland City Council

Dec. 5th, 2012



- Created by city voters in 2002; overwhelmingly renewed in 2008.
- \$100 Million invested in children's programs through 2013.





- Annually audited.
- Operates with 5-percent admin cap.
- 95 cents of every dollar goes to proven, cost-effective programs.
- \$6 M in private funds leveraged over past two levies to maximize resources for Portland children.
- All programs monitored by staff.
- Grantees selected through competitive funding process.



Allocation Committee meets publicly and approves all funding:

- City Commissioner Dan Saltzman, Chair
- Mult. Co. Commissioner Deborah Kafoury
- Julie S. Young, City-appointed rep
- Adrienne Livingston, County-appointed rep
- Ron Beltz, Portland Business Alliance rep

- Early Childhood
Children enter kindergarten prepared to succeed.
- After School & Mentoring
Students stay engaged in school and safe after school.
- Child Abuse Prevention & Intervention
Stressed families most at risk receive support and intervention services.
- Foster Care
Ensuring kids in foster care succeed.





Outcomes for children/families

- Families report increased literacy and parenting skills.
- PCL has decreased the cost of quality childcare for low-income parents.
- Students in Portland Public, Centennial, David Douglas, Parkrose and Reynolds school districts attending after-school and mentoring programs show improved school attitude and social behaviors and higher self confidence.
- Parents annually receive nearly 5,000 hours of respite care to help prevent abuse and neglect.
- Families in foster care programs show improved parenting skills and reduction in reported abuse.

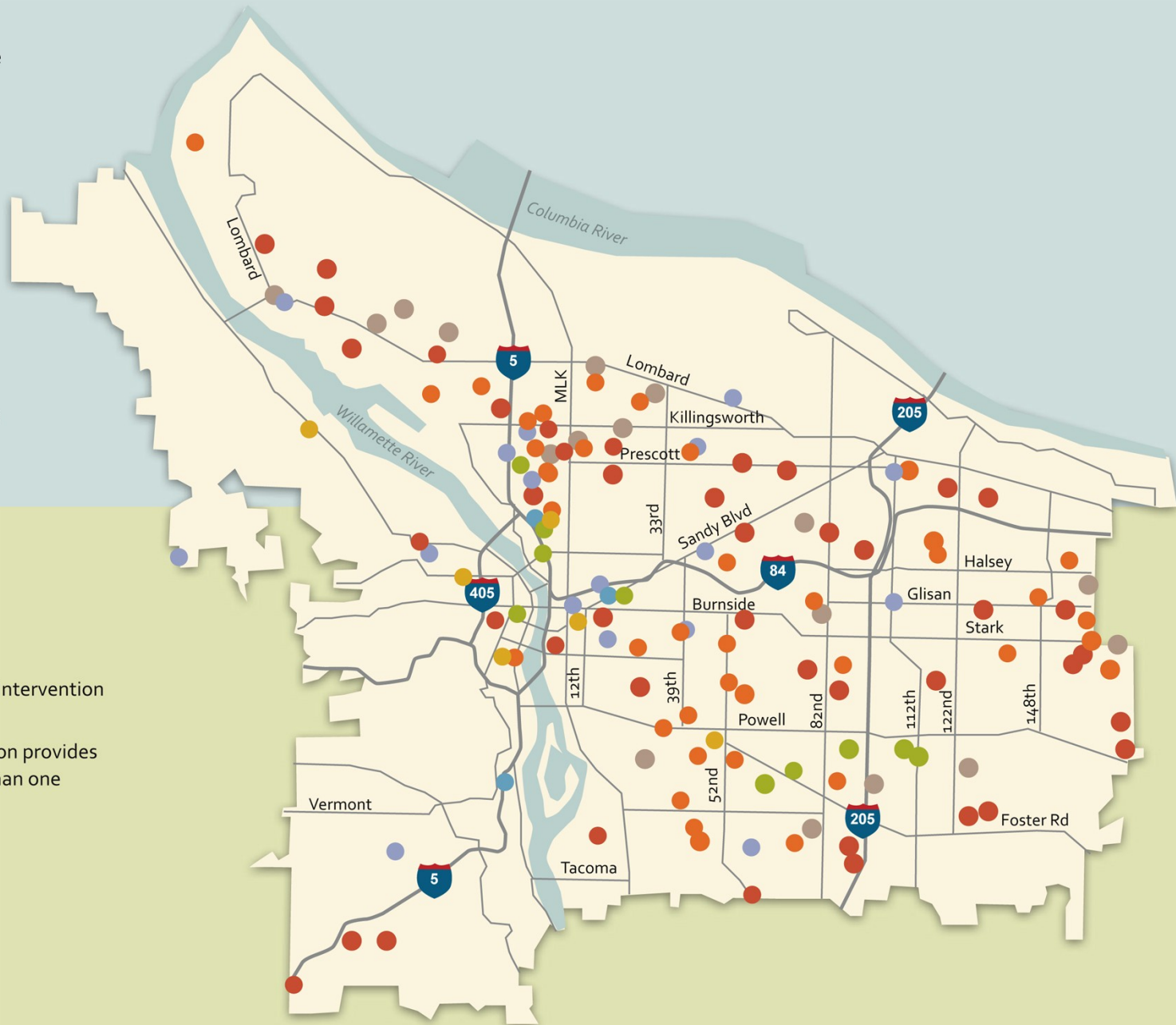
THE REACH OF THE PORTLAND CHILDREN'S LEVY

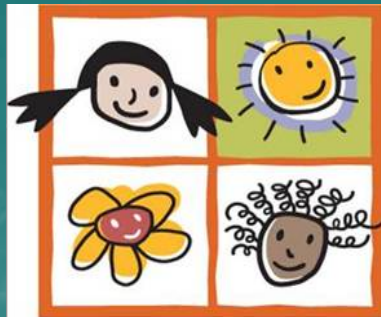
36979 presentation

Dots on the map represent Levy-funded organization administrative offices and the 62 schools at which a majority of our after-school and mentoring programs occur. Not shown on the map are:

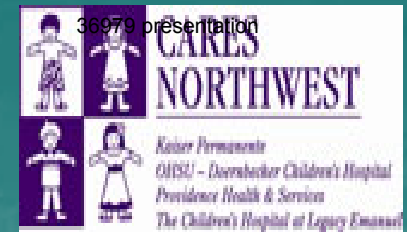
- 120-plus childcare providers at community preschools and family- and center-based sites
- 36 Head Start and Early Head Start sites
- Hundreds of children served in their homes by home-based services

- Early Childhood
- After School
- Mentoring
- After School/Mentoring
- Child Abuse Prevention/Intervention
- Foster Care
- Multiservice (Organization provides programming in more than one funding area)





Investing in our future
**portland
children's
levy**



Portland Children's
Levy Election:
May 21st, 2013

