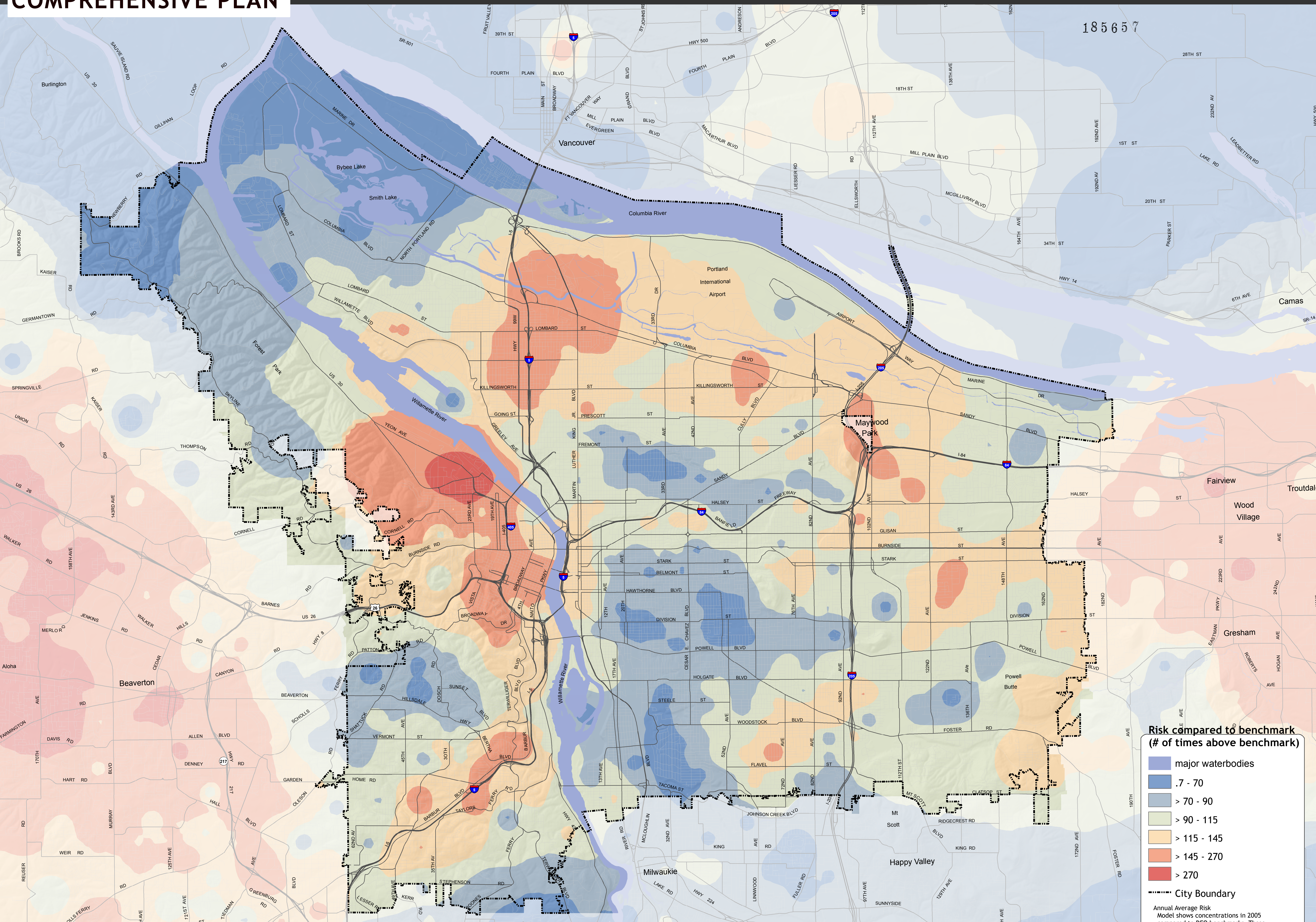


# 2005 Risk of Exposure to Outdoor Toxic Air Pollutants - HAZ-06

BUILDABLE LANDS

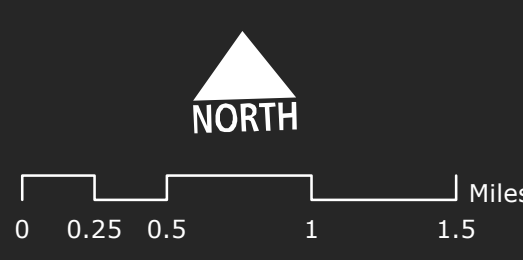
## COMPREHENSIVE PLAN



**Risk compared to benchmark  
(# of times above benchmark)**

- major waterbodies
- .7 - 70
- > 70 - 90
- > 90 - 115
- > 115 - 145
- > 145 - 270
- > 270
- City Boundary

**Annual Average Risk**  
Model shows concentrations in 2005 compared to DEQ benchmarks. These data were provided by the Oregon Department of Environmental Quality and are based on air quality modeling from their Portland Air Toxics Solutions (PATS) project



**Bureau of Planning and Sustainability**  
Innovation. Collaboration. Practical Solutions.  
City of Portland, Oregon  
Sam Adams, Mayor • Susan Anderson, Director



June 5, 2012 City of Portland | Bureau of Planning and Sustainability | Geographic Information System  
The information on the map was derived from digital data-bases on the City of Portland, Bureau of Planning and Sustainability GIS. Care was taken in the creation of this map but it is provided "as is". The City of Portland cannot accept any responsibility for error, omissions, or positional accuracy, and therefore, there are no warranties which accompany this product. However, notification of any errors will be appreciated.  
This work was supported in part by a periodic review grant from the Oregon Department of Land Conservation and Development.