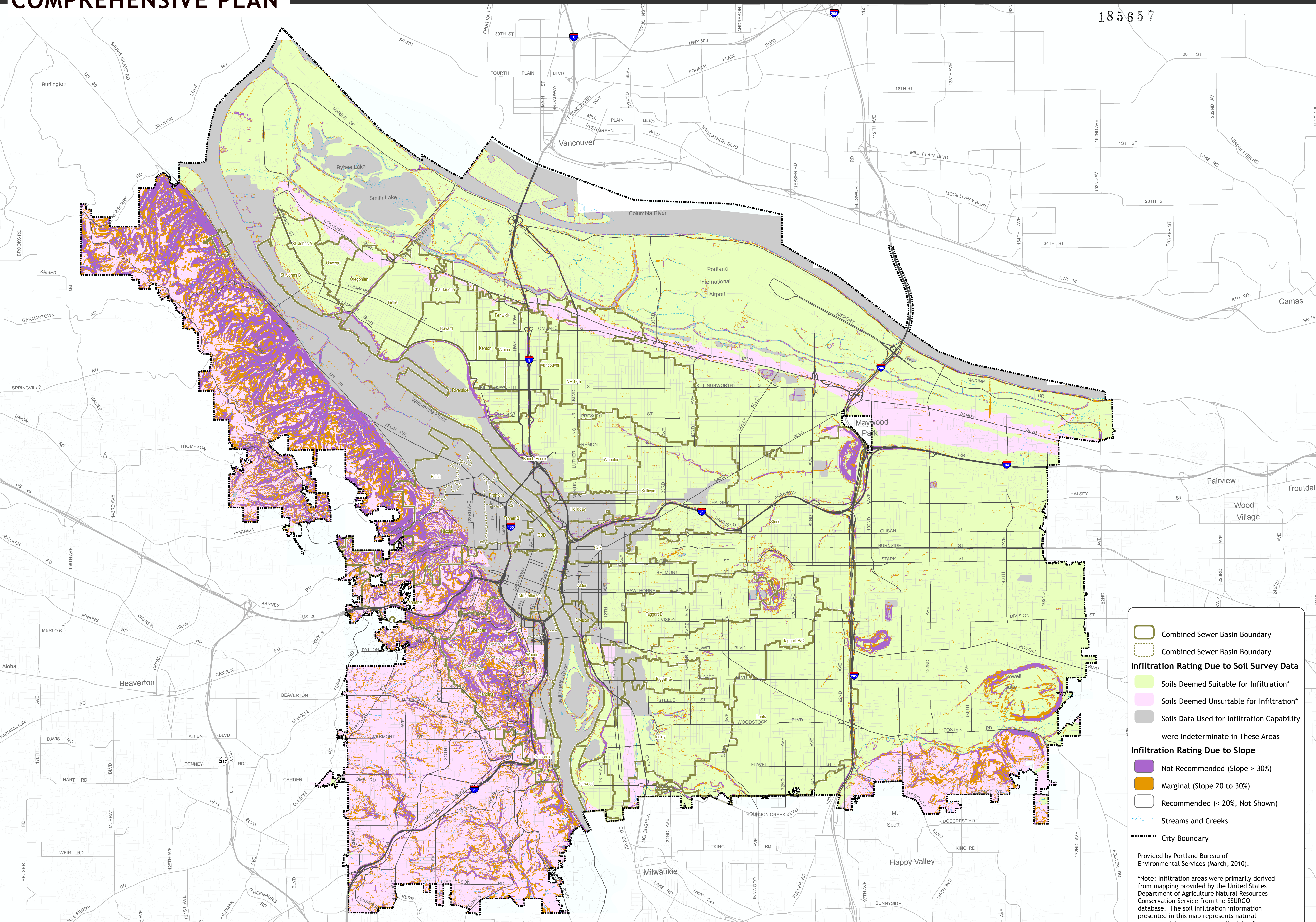


Soil Infiltration Capability - CON-12

BUILDABLE LANDS

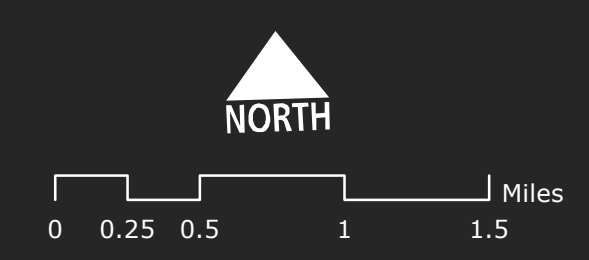
COMPREHENSIVE PLAN



- Combined Sewer Basin Boundary
- Combined Sewer Basin Boundary
- Infiltration Rating Due to Soil Survey Data**
- Soils Deemed Suitable for Infiltration*
- Soils Deemed Unsuitable for Infiltration*
- Soils Data Used for Infiltration Capability were Indeterminate in These Areas
- Infiltration Rating Due to Slope**
- Not Recommended (Slope > 30%)
- Marginal (Slope 20 to 30%)
- Recommended (< 20%, Not Shown)
- Streams and Creeks
- City Boundary

Provided by Portland Bureau of Environmental Services (March, 2010).

*Note: Infiltration areas were primarily derived from mapping provided by the United States Department of Agriculture Natural Resources Conservation Service from the SSURGO database. The soil infiltration information presented in this map represents natural resources data assessment methodology for soil infiltration capacity based on a variety of parameters. The method is currently under review and will likely be modified in the future, and thus should be considered provisional.



Bureau of Planning and Sustainability
Innovation. Collaboration. Practical Solutions.
City of Portland, Oregon
Sam Adams, Mayor • Susan Anderson, Director



June 5, 2012 City of Portland | Bureau of Planning and Sustainability | Geographic Information System
The information on the map was derived from digital data-bases on the City of Portland, Bureau of Planning and Sustainability GIS. Care was taken in the creation of this map but it is provided "as is". The City of Portland cannot accept any responsibility for error, omissions, or positional accuracy, and therefore, there are no warranties which accompany this product. However, notification of any errors will be appreciated.
This work was supported in part by a periodic review grant from the Oregon Department of Land Conservation and Development.