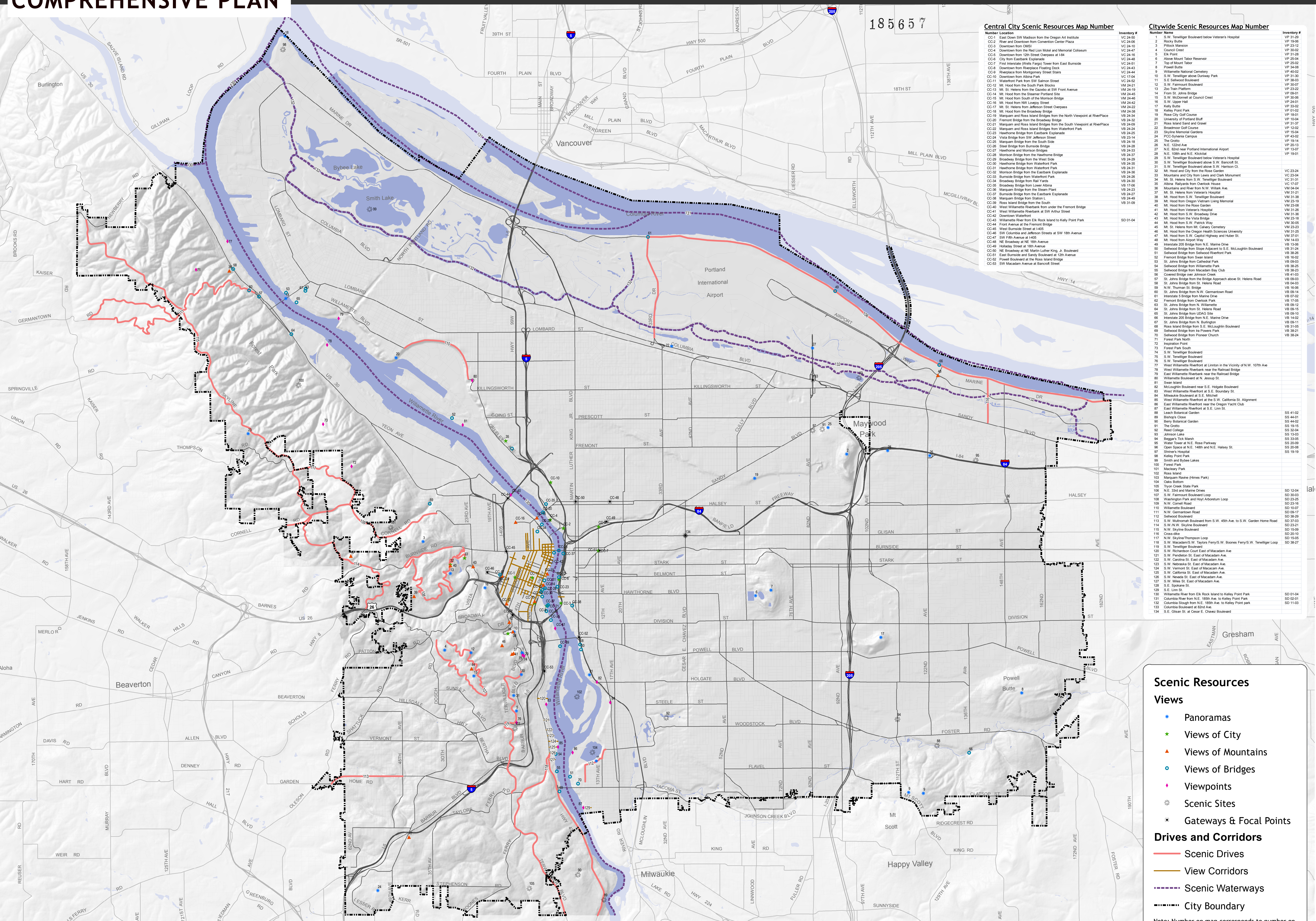


Significant Scenic Resources - CON-05

BUILDABLE LANDS

COMPREHENSIVE PLAN



Central City Scenic Resources Map Number

Number	Location	Inventory #
CC-1	East Down SW Madison from the Oregon Art Institute	VC 24-50
CC-2	River and Downtown from Convention Center Plaza	VC 24-56
CC-3	Downtown from OMSI	VC 24-10
CC-4	Downtown from the Red Lion Hotel and Memorial Coliseum	VC 24-47
CC-5	Downtown from 12th Street Overpass at Lake	VC 24-16
CC-6	City from Eastbank Esplanade	VC 24-48
CC-7	First Interstate (White Flange) Tower from East Burnside	VC 24-51
CC-8	Downtown from Riverplace Floating Dock	VC 24-43
CC-9	Riverplace from Montgomery Street Stairs	VC 24-44
CC-10	Downtown from Alsea Park	VC 24-34
CC-11	Waterfront Park from SW Salmon Street	VC 24-52
CC-12	Mt. Hood from the South Park Blocks	VM 24-21
CC-13	Mt. St. Helens from the Gazetto at SW Front Avenue	VM 24-19
CC-14	Mt. Hood from the Steamer Portland Site	VM 24-22
CC-15	Mt. Hood from South of the Morrison Bridge	VM 24-46
CC-16	Mt. Hood from NW Lowley Street	VM 24-42
CC-17	Mt. St. Helens from Jefferson Street Overpass	VM 24-22
CC-18	Mt. Hood from the Broadway Bridge	VM 24-38
CC-19	Marquam and Ross Island Bridges from the North Viewpoint at RiverPlace	VB 24-34
CC-20	Freemont Bridge from the Broadway Bridge	VB 24-32
CC-21	Marquam and Ross Island Bridges from the South Viewpoint at RiverPlace	VB 24-30
CC-22	Marquam and Ross Island Bridges from Waterfront Park	VB 24-24
CC-23	Hawthorne Bridge from Eastbank Esplanade	VB 24-25
CC-24	Vista Bridge from SW Jefferson Street	VB 23-14
CC-25	Marquam Bridge from the South Side	VB 24-18
CC-26	Steel Bridge from Burnside Bridge	VB 24-28
CC-27	Hawthorne and Morrison Bridges	VB 24-33
CC-28	Morrison Bridge from the Hawthorne Bridge	VB 24-37
CC-29	Broadway Bridge from the West Side	VB 24-29
CC-30	Hawthorne Bridge from Waterfront Park	VB 24-35
CC-31	Hawthorne Bridge from Waterfront Park	VB 24-31
CC-32	Morrison Bridge from the Eastbank Esplanade	VB 24-36
CC-33	Broadway Bridge from Waterfront Park	VB 24-30
CC-34	Broadway Bridge from Lower Alsea	VB 17-06
CC-35	Marquam Bridge from Statton L	VB 24-03
CC-36	Burnside Bridge from the Eastbank Esplanade	VB 24-27
CC-37	Marquam Bridge from Statton L	VB 24-49
CC-38	Ross Island Bridge from the South	VB 31-09
CC-39	Ross Island Bridge from the South	VB 31-09
CC-40	West Willamette Riverbank from under the Freemont Bridge	VM 31-21
CC-41	West Willamette Riverbank at SW Arthur Street	VM 31-28
CC-42	Downtown Waterfront	VM 31-28
CC-43	Willamette River from Elk Rock Island to Kelly Point Park	VM 31-28
CC-44	Front Avenue at the Freemont Bridge	VM 31-28
CC-45	West Burnside Street at 14th	VM 31-25
CC-46	SW Columbia and Jefferson Streets at SW 18th Avenue	VM 31-25
CC-47	SW Fifth Avenue at 14th	VM 14-03
CC-48	NE Broadway at NE 18th Avenue	VB 13-06
CC-49	Hollyday Street at 18th Avenue	VB 31-24
CC-50	NE Broadway at N. Martin Luther King, Jr. Boulevard	VB 38-26
CC-51	East Burnside and Sandy Boulevard at 12th Avenue	VB 38-26
CC-52	Powell Boulevard at the Ross Island Bridge	VB 38-26
CC-53	SW Macadam Avenue at Bancroft Street	VB 38-26

Citywide Scenic Resources Map Number

Number	Name	Inventory #
1	S.W. Terwilliger Boulevard below Veterans' Hospital	VP 31-29
2	Rosby Bluffs	VP 19-26
3	Pittcock Mansion	VP 23-12
4	Council Crest	VP 30-02
5	Elk Point	VP 31-28
6	Abnott Mount Labor Reservoir	VP 25-04
7	Top of Mount Hood	VP 25-02
8	Powell Butte	VP 34-08
9	Willamette National Cemetery	VP 49-02
10	S.W. Terwilliger above Dunsmuir Park	VP 31-30
11	S.E. Sellwood Boulevard	VP 38-03
12	S.W. Fairmount Boulevard	VP 30-07
13	Zoo Train Platform	VP 23-22
14	From St. Johns Bridge	VP 09-01
15	S.W. McDonnell at Council Crest	VP 30-06
16	S.W. Lipper Hall	VP 24-01
17	Kelly Point	VP 33-02
18	Kelly Point Park	VP 01-02
19	Rose City Golf Course	VP 18-01
20	University of Portland Bluff	VP 10-04
21	Rose Island Sand and Gravel	VP 23-02
22	Broadway Golf Course	VP 12-02
23	Skyline Memorial Gardens	VP 45-02
24	P.O. Systems Campus	VP 45-02
25	The Gridlo	VP 18-14
26	N.E. 122nd Ave	VP 20-13
27	N.E. 82nd near Portland International Airport	VP 13-07
28	N.E. 108th and N.E. Klischal	VP 19-01
29	S.W. Terwilliger Boulevard below Veterans' Hospital	VP 31-29
30	S.W. Terwilliger Boulevard above S.W. Bancroft St.	VC 23-24
31	S.W. Terwilliger Boulevard above S.W. Harrison Ct.	VC 23-24
32	Mt. Hood and City from the Rose Garden	VC 31-31
33	Mountains and City from Lewis and Clark Monument	VC 17-07
34	Mt. St. Helens from S.W. Terwilliger Boulevard	VC 31-31
35	Albina Railway from Columbia	VM 04-04
36	Mountains and River from N.W. Willamette Ave	VM 04-04
37	Mt. St. Helens from Veterans' Hospital	VM 31-21
38	Mt. Hood from S.W. Terwilliger Boulevard	VM 31-28
39	Mt. Hood from Oregon Vietnam Living Memorial	VM 31-28
40	Mt. Hood from the Rose Garden	VM 23-08
41	Mt. Hood from Veterans' Hospital	VM 31-28
42	Mt. Hood from S.W. Terwilliger Boulevard	VM 31-28
43	Mt. Hood from the Vista Bridge	VM 31-28
44	Mt. Hood from S.W. Park Way	VM 30-05
45	Mt. St. Helens from Mt. Casey Cemetery	VM 31-25
46	Mt. Hood from the Oregon Health Sciences University	VM 31-25
47	Mt. Hood from S.W. Cassid Highway and Huber St.	VM 31-25
48	Mt. Hood from Airport Way	VM 14-03
49	Interstate 205 Bridge from N.E. Marine Drive	VB 13-06
50	Selwood Bridge from Slope Adjacent to S.E. McLoughlin Boulevard	VB 31-24
51	Selwood Bridge from Sellwood Riverfront Park	VB 38-26
52	Freemont Bridge from Statton L	VB 24-49
53	St. Johns Bridge from Cathedral Park	VB 09-03
54	Selwood Bridge from Willamette Park	VB 38-26
55	Selwood Bridge from Macadam Bay Club	VB 38-23
56	Covered Bridge over Johnson Creek	VB 41-03
57	St. Johns Bridge from the Bridge Approach above St. Helens Road	VB 04-03
58	St. Johns Bridge from N. Helens Road	VB 04-03
59	N.W. Kurnum St. Bridge	VB 09-14
60	St. Johns Bridge from N.W. Gemartown Road	VB 09-14
61	Interstate 5 Bridge from Marine Drive	VB 17-05
62	Freemont Bridge from Overlook Park	VB 09-12
63	St. Johns Bridge from N. Willamette	VB 09-12
64	St. Johns Bridge from N. Helens Road	VB 09-15
65	St. Johns Bridge from LUDAG Site	VB 09-10
66	Interstate 205 Bridge from N.E. Marine Drive	VB 14-02
67	St. Johns Bridge from N. Burlington	VB 09-11
68	Ross Island Bridge from S.E. McLoughlin Boulevard	VB 31-05
69	Selwood Bridge from Pioneer Church	VB 38-24
70	Selwood Bridge from Pioneer Church	VB 38-24
71	Forest Park South	SS 41-02
72	Inspiration Point	SS 44-01
73	Forest Park North	SS 19-15
74	S.W. Terwilliger Boulevard	SS 19-15
75	S.W. Terwilliger Boulevard	SS 19-15
76	S.W. Terwilliger Boulevard	SS 19-15
77	West Willamette Riverbank at Linton in the Vicinity of N.W. 107th Ave	SS 19-15
78	West Willamette Riverbank near the Railroad Bridge	SS 19-15
79	East Willamette Riverbank near the Oregon Yacht Club	SS 19-15
80	Willamette Boulevard at N. Jessup St.	SS 19-15
81	Swan Island	SS 41-02
82	McLoughlin Boulevard near S.E. Hugate Boulevard	SS 44-01
83	West Willamette Riverbank at S.E. Broadway St.	SS 19-15
84	Milwaukie Boulevard at S.E. Mitchell	SS 19-15
85	West Willamette Riverbank at the S.W. California St. Alignment	SS 19-15
86	East Willamette Riverbank near the Oregon Yacht Club	SS 19-15
87	East Willamette Riverbank at S.E. Linn St.	SS 19-15
88	Leach Botanical Garden	SS 41-02
89	Birney's Cove	SS 44-01
90	Birney Botanical Garden	SS 19-15
91	The Gridlo	SS 19-15
92	Forest Park	SS 24-04
93	Johnson Lake	SS 13-03
94	Bragg's Tick Marsh	SS 35-05
95	Water Tower at N.E. Rose Parkway	SS 20-08
96	Open Space at N.E. 148th and N.E. Halsey St.	SS 20-08
97	Smith and Beebe Lakes	SS 19-19
98	Kelly Point Park	SS 19-19
99	Smith and Beebe Lakes	SS 19-19
100	Forest Park	SS 19-19
101	Mackey Park	SD 13-04
102	Rose Island	SD 30-03
103	Marquam Ravine (Himes Park)	SD 23-16
104	Oak Bluffton	SD 23-16
105	Tyran Creek State Park	SD 23-16
106	N.E. 33rd and Marine Dikes	SD 23-16
107	S.W. Fairmount Boulevard Loop	SD 10-07
108	Washington Park and Hoyt Arboretum Loop	SD 10-07
109	N.W. Cornell Road	SD 37-03
110	Willamette Boulevard	SD 23-21
111	N.W. Gemartown Road	SD 23-21
112	Selwood Boulevard	SD 15-09
113	S.W. Mathomish Boulevard from S.W. 49th Ave. to S.W. Garden Home Road	SD 20-10
114	S.W. N.W. Skyline Boulevard	SD 23-21
115	N.W. Skyline Boulevard	SD 15-09
116	Cross-Island	SD 15-05
117	N.W. Skyline-Thompson Loop	SD 15-05
118	S.W. Macadam/S.W. Taylor Ferry/S.W. Boones Ferry/S.W. Terwilliger Loop	SD 38-27
119	S.W. Terwilliger Boulevard	SD 38-27
120	S.W. Richardson Court East of Macadam Ave	SD 38-27
121	S.W. Anderson St. East of Macadam Ave	SD 38-27
122	S.W. Carolina St. East of Macadam Ave	SD 38-27
123	S.W. Nebraska St. East of Macadam Ave	SD 38-27
124	S.W. Vermont St. East of Macadam Ave	SD 38-27
125	S.W. California St. East of Macadam Ave	SD 38-27
126	S.W. Nevada St. East of Macadam Ave	SD 38-27
127	S.W. Alsea St. East of Macadam Ave	SD 38-27
128	S.E. Spokane St.	SD 01-04
129	S.E. Linn St.	SD 02-01
130	Willamette River from Elk Rock Island to Kelly Point Park	SD 02-01
131	Columbia Slough from N.E. 186th Ave. to Kelly Point Park	SD 02-01
132	Columbia Slough from N.E. 186th Ave. to Kelly Point Park	SD 11-03
133	Columbia Boulevard at 62nd Ave.	SD 11-03
134	S.E. Gilliam St. at Cesar E. Chavez Boulevard	SD 11-03

Scenic Resources

Views

- Panoramas
- Views of City
- Views of Mountains
- Views of Bridges
- Viewpoints

Scenic Sites

- Gateways & Focal Points

Drives and Corridors

- Scenic Drives
- View Corridors
- Scenic Waterways

City Boundary

Note: Number on map corresponds to number on Scenic Resources Inventory Map.

Scenic Resources Inventory:
City of Portland Planning & Sustainability,
March 1991.