

SOCIAL EQUITY CONTRACTING STRATEGY

IF YOU WISH TO SPEAK TO CITY COUNCIL, PRINT YOUR NAME, ADDRESS, AND EMAIL.

NAME (print)

ADDRESS AND ZIP CODE

Email

<del>Vinny Ramakrishnan</del>		
✓ Melvin Oden-Orr	519 SW Park Ave, Ste 310, 97205	Melvin@oden-orr-sw.com
✓ Steve Dukart	13121 SE Bobby Bruce Ln	Steve@dukeconst.com
✓ Roy Jay		
✓ JAMES ROSELY		
✓ Jorge Guevara		Jorge@oame.org
✓ Neil Lee		Succeed@leekinc.com
✓ Maurice Rehming		Maurice@ONCMLElectrics.com
✓ Tony Jones	MCIP	tony@mcip-pdx.org
1		



36944

P.O. Box 301251 • Portland, OR 97294-9251  
Phone (503) 742-8877 • Fax (503) 650-7555  
Email [nucaorswwa@aol.com](mailto:nucaorswwa@aol.com)  
Web [www.nucaorswwa.com](http://www.nucaorswwa.com)

July 19, 2012

Mayor Sam Adams  
Commissioner Nick Fish  
Commissioner Amanda Fritz  
Commissioner Randy Leonard  
Commissioner Dan Saltzman

Good afternoon... My name is Steve Dukart and I am the Chapter President of NUCA of Oregon and SW Washington. NUCA's members, including Roy Moore, with Moore Excavation, perform a great deal of the City's utility work, and are proud to provide quality work that maintains and improves the standard of the environment and life in Portland, at competitive prices.

NUCA would like to thank you and the City Staff for all your hard work on equity in contracting, from commissioning, developing, and publishing the most recent Disparity Report, to considering appropriate ways to address disparities found in the Disparity Report, and through to preparing and presenting today's resolution.

We would also like to thank you and the City for all the opportunities the public has had to be involved in the process. I have been honored to participate as co-chair on the New Small Business Construction Program. NUCA's Executive Director Melinda Dailey, past president John Kalkhoven, and board member Mat Warrington, all have been honored to participate on the Fair Contracting Forum and the subcommittees for Good Faith Efforts, and the Prequalification program, respectively. NUCA wants to thank all the other Fair Contracting Forum and subcommittee participants for their hard work as well.

We know that the process does not end here with today's resolution. In fact, the City Staff will have a great deal of hard work to do to implement today's resolution with concrete, substantive programs that appropriately ensure equity in contracting. NUCA is particularly pleased to see that the resolution before you today calls for continued Fair Contracting Forum participation in the process of implementing what today's resolution orders. NUCA and its representatives are looking forward to continued participation. We are certain that together, NUCA, the City Staff, and other stakeholders, can implement today's resolution with concrete, substantive programs that ensure equity, maintain quality, and keep costs to the City's rate payers at a minimum. That is our hope and expectation. Based on that hope and expectation, NUCA supports today's resolution.

Steve Dukart  
Chapter President



# NUCA

REPRESENTING UTILITY & EXCAVATION CONTRACTORS  
OREGON & SOUTHWEST WASHINGTON CHAPTER

36944



# 2012

## MEMBERSHIP DIRECTORY



**PETERSON**



Your source for Caterpillar machinery, agricultural equipment, rental equipment, portable and stationary diesel-powered generators, natural gas turbines, air compressors, and advanced equipment guidance systems.

Visit us at [petersoncat.com](http://petersoncat.com)!

**NOW WITH MORE LOCATIONS  
TO SERVE YOU:**

**CHICO, CA**  
425 Southgate Ave  
(530) 343-1911

**REDDING, CA**  
5100 Caterpillar Rd  
(530) 243-5410

**SAN MARTIN, CA**  
13155 Sycamore Ave  
(408) 686-1195

**SANTA ROSA, CA**  
3710 Regional Pkwy  
(707) 576-1616

**ALBANY, OR**  
30815 Hwy 34 SW  
(541) 791-9133

**KLAMATH FALLS, OR**  
1434 South 6th St  
(541) 850-8658

**NORTH BEND, OR**  
1570 Maple St  
(541) 756-8708

**PORTLAND RENTAL**  
6654 NE 47th Ave  
(503) 280-1899

**SALEM, OR**  
3850 Turner Rd SE  
(503) 364-0602

**THE DALLES, OR**  
1238 W. Second St  
(541) 296-4642

**FORTUNA, CA**  
1700 Alamar Way  
(707) 725-1888

**SAN LEANDRO, CA**  
955 Marina Blvd  
(510) 357-6200

**SANTA ROSA, CA**  
3710 Regional Pkwy  
(707) 576-1616

**WILLITS, CA**  
1471 B South Main St  
(707) 459-9006

**EUGENE, OR**  
2300 Henderson Ave  
(541) 302-9199

**MEDFORD, OR**  
2600 Biddle Rd  
(541) 282-8551

**PORTLAND, OR**  
4421 NE Columbia Blvd  
(503) 288-6411

**REDMOND, OR**  
3635 SW Airport Way  
(541) 548-8566

**SPRINGFIELD RENTAL**  
1626 30th St  
(541) 736-9343

**LONGVIEW, WA**  
1205 Baltimore St  
(360) 423-5760

**The shortest  
distance between  
two points  
is a  
straight line.**



Call For  
A Quote Or  
More Information

Oregon: **503.647.2218**  
Toll Free: **1.800.486.8523**

Fax: 503.647.5226  
Email: [GBTINC@AOL.COM](mailto:GBTINC@AOL.COM)

P.O. BOX 187 • NORTH PLAINS, OR 97133



Installing 120" diameter  
steel casing under  
B.N.R.R. in Pasco, WA



# NUCA

REPRESENTING UTILITY & EXCAVATION CONTRACTORS  
OREGON & SOUTHWEST WASHINGTON CHAPTER

PO Box 301251, Portland, OR 97294-9251 • Phone: (503) 742-8877 • Fax (503) 650-7555  
Email: nucaorswwa@aol.com • Web: www.nucaorswwa.com  
Contact: Melinda Dailey, Executive Director cell: (503) 572-4001

Proud Sponsor of the:



## ON THE COVER

### Supporting Our Military

This year's cover photo is of an excavator that was auctioned off at NUCA's 2011 Holiday Auction. Proceeds of the sale went to the Salvation Army's "Operation Santa Home Front War Relief," which helps provide for the needs of our military and their families. Clyde West donated the use of the excavator for 2012. Coffman Excavation, LLC and the MEI Group (A Moore Excavation Company) also have donated to the cause by renting the excavator for use on their job sites. The photo was taken at MEI's Sundial Yard in Troutdale, Ore.

*We would like to thank the contractor, associate and affiliate members for their support of the organization. It is our hope that through industry related meetings and various events provided by NUCA of Oregon & SW Washington, our members will gain successful business opportunities.*

The 2012 NUCA of Oregon & SW Washington Membership Directory was produced by:

# DJC

921 SW Washington St., Suite 210  
Portland, OR 97205  
(503) 226-1311 • www.djcoregon.com

#### DJC Staff:

Publisher: Rynni Henderson  
Advertising Director: Cris Schulz  
Advertising Sales: Ben Bracelin,  
Rob Hennis  
Graphic Design: Shannon Vincent  
Special Projects: Theresa McKinlay

Although every effort has been made to ensure that the information contained within this directory is both complete and accurate, the Daily Journal of Commerce and NUCA of Oregon & Southwest Washington assume no liability for any errors or omissions contained within. No part of this directory may be copied or reproduced without written permission from the publisher or NUCA of Oregon & Southwest Washington.

## TABLE OF CONTENTS

President's Message .....	4
Member News .....	5
Calendar of Events .....	6
Member Benefits .....	8
Membership Application .....	9
NUCA PAC Membership Form .....	10
2012 Board Members .....	11
Association Committees .....	12-13
Contractor Directory .....	14-18
Associates Directory .....	19-28
Affiliates Directory .....	29-30

## INDEX TO ADVERTISERS

Advantage Precast, Inc. ....	15
AKT, LLP .....	21
Armadillo Underground, Inc. ....	22
American Sani-Can .....	27
Anchor Insurance & Surety, Inc. ....	25
Assurety Northwest Insurance Agency .....	28
BakerCorp. ....	16
Biggs Insurance Services .....	20
CalPortland .....	27
Clyde West .....	17
Duke Construction & Excavation .....	22
Emery & Sons Construction, Inc. ....	21
Extreme Excavating .....	25
Gonzales Boring & Tunneling, Inc. ....	2
Hanson Pipe & Precast .....	18
The Iron Horse Group .....	24
Iron Horse Recycling .....	26
K & E Excavating .....	16
Knife River .....	26
Lakeside Industries .....	7
McCallum Rock Drilling, Inc. ....	14
MEI Group, A Moore Excavation Company .....	20
Ness & Campbell Crane, Inc. ....	4
NUCA .....	31
Oregon Tractor .....	23
Peterson Cat .....	2
PNE Construction .....	30
Stettler Supply Company .....	19
Stewart Sokol & Gray, LLC .....	23
Triad Machinery .....	7
United Rentals Trench Safety .....	32



## Message from Steve Dukart, 2012 NUCA President

As I enter my second year as Chapter President of NUCA of Oregon and SW Washington, I would like to thank all of our members for the ongoing support they have given our association. With the active participation of our members



**Steve Dukart**  
Duke Construction & Excavation

serving as board members and on NUCA committees, we continue to grow stronger and have become an organization that other industry organizations and public agencies look to for input on many issues. I would like to once again send out special thanks to our Executive Director Melinda Dailey for her tireless work that has helped NUCA get to where it is today.

Who really knows what 2012 will bring? Will the economy improve? We can only hope, but one thing is for certain, there will be many new issues, regulations and policies that arise. The governmental environment doesn't seem to get easier on us; it just seems to get

tougher. That is why NUCA needs to continue to grow strong in numbers and member participation. To do this we need continued support from our members, especially our contractor members. Attendance at the general meetings and participating on committees and the board of directors goes a long way in building relationships with fellow members. We need to hear from all of you to find out what is happening, how you think things are going, and share any issues that impact our industry.

I used to think that the difference we could make as an organization was very small, but we still needed to continue to fight. After being involved with NUCA for my years on the board and executive board, I have seen firsthand what a difference we could make. For instance in 2011, NUCA coordinated efforts to review and offer input on the City of Portland's proposed Clean Diesel Policy. Additionally, three members of our board were recently selected by the City of Portland to participate in workgroups that made recommendations to the Fair Contracting Forum. The Forum, which our Ex-

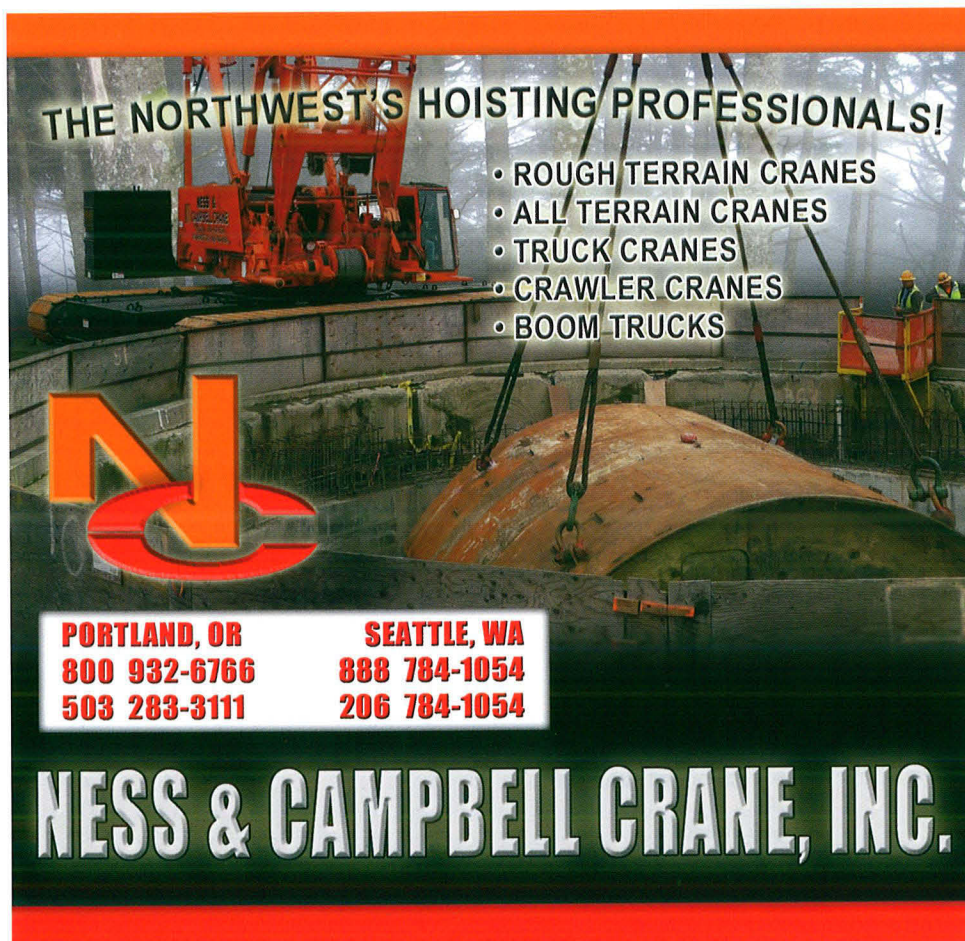
ecutive Director has a seat, is developing future policy for M/W/ESB contracting within the city. This is very encouraging and lets you know we can make a difference. The key is to get involved and help out; just like anything in life you only get out of it what you put into it.

Lately I have heard some asking "What has NUCA done for me." The obvious benefits and the easy ones to explain would be Engineers Night, networking with contractors, the NUCA Dividend Insurance program, our safety program, and the Health Net and Aflac insurance programs. These are all good benefits, and by themselves worthy of membership. But the deeper and long-lasting benefit of NUCA is the work we do as an organization to create policy and fight issues that concern our members and our industry. The work NUCA has done to create a better environment for our industry is priceless. Without NUCA's collective representation by contractor, associate and affiliate members alike, things would be much more difficult.

One of the highlights of 2011 was the return of an insurance dividend to our members that participated in the NUCA Insurance Dividend program. We exceeded the \$2 million threshold for earned premium, and we had a good loss ratio. The dividend totaled \$191,458 and was shared by 34 of our member firms. Once again, I would like to thank all of the brokers for their hard work ensuring the success of the program. The NUCA Insurance Dividend program is a huge accomplishment, and will be a great asset in growing our membership. It is a one of a kind program, so please take the time to check it out to see if it is right for your company.

In 2012 I would like to continue to grow NUCA by increasing membership and improving relationships with the community and the industry as a whole. We need to stress involvement and active participation by our contractor members in particular. Without their participation and help, we would be nowhere. To continue to grow and become stronger we need their continued support. Like I said last year there is strength in numbers. At a time where government regulation and industry rules just keep getting tougher, NUCA needs to do the same. I look forward to working with all of you again this year.

Thank you. I hope you all have a great year.



**THE NORTHWEST'S HOISTING PROFESSIONALS!**

- ROUGH TERRAIN CRANES
- ALL TERRAIN CRANES
- TRUCK CRANES
- CRAWLER CRANES
- BOOM TRUCKS

**PORTLAND, OR**  
800 932-6766  
503 283-3111

**SEATTLE, WA**  
888 784-1054  
206 784-1054

**NESS & CAMPBELL CRANE, INC.**



# NUCA of Oregon & SW Washington recognizes members' accomplishments with awards

Our chapter has established an award program to acknowledge the efforts of company members and individuals who serve as role models and provide outstanding leadership to the association. NUCA devotes its energies and resources to three core competencies, each of which describes a fundamental aspect of who we are and what we do. They are legislative/regulatory advocacy, jobsite safety promotion and professional education. We are recognizing the impressive achievements of individuals and companies who excel at aiding NUCA in these goals. The scope and breadth of this volunteerism is not only inspiring, but also a source of great pride for our industry. We honor those members that have demonstrated exceptional leadership.



## SAVE THE DATES!

**MAY 21 - 22**

DOZER DAY

- VANCOUVER, WA
- CEMEX/FISHER QUARRY

**JUNE 24**

PORTLAND TIMBERS VS. SEATTLE

**AUGUST 24**

- NUCA GOLF TOURNAMENT
- GRESHAM GOLF COURSE

**SEPTEMBER 15**

PORTLAND TIMBERS VS. SEATTLE

**NOVEMBER 10**

- NUCA HOLIDAY AUCTION
- PORTLAND HILTON HOTEL
- ROOM BLOCK AVAILABLE



### Contractor of the Year

The Contractor of the Year award is given to the person or company that has gone over and above for the industry in the past year.

The 2011 Contractor of the Year is awarded to John Kalkhoven with Titan Utilities, LLC. John has been a Past President of the association and currently serves on the board of directors. In addition, he chairs the City of Portland BES, Clean Water Services and Self-Performing Work Committees. John's commitment to the industry and this association is unparalleled. He devotes countless hours to our association and is truly deserving of this award.



**Contractor of the Year**  
*John Kalkhoven*

### Associate of the Year

The 2011 award for Associate of the Year is given to Dawn Morse with D.P. Nicoli, Inc. Dawn sits on the board of directors as the Associate Committee chair, and also participates on several other committees, including Safety, Membership, City of Gresham, BES, Portland Water, Publicity, Golf and the Auction committee. She is a tireless advocate of the association and repeats as award winner for 2011.

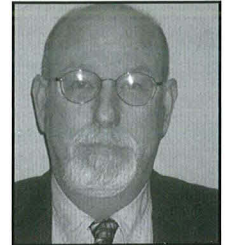


**Associate of the Year**  
*Dawn Morse*

### Committee Person of the Year

The Committee Person of the Year award is given to the member that really separates themselves from the pack at the committee level. The 2011 Committee Person of the Year is Hank Lane with Coffman Excavation. Hank chairs both the Safety Committee and the Dividend Program Safety & Loss Committee, and sits on the Budget & Investment Committee. In

addition, he served as the Secretary-Treasurer for the association and created the Safety Portal for the NUCA website. Hank is a great representative for NUCA and his efforts are much appreciated.



**Committee Person of the Year**  
*Hank Lane*

### Outstanding Achievement Awards

The Outstanding Achievement Award is given to the member, or company, that exhibits extraordinary service and dedication to NUCA of Oregon & SW Washington. The 2011 Outstanding Achievement Award is shared by Cynthia Hilton with Biggs Insurance Services and Jeff Broyles with Beecher Carlson Insurance Agency.

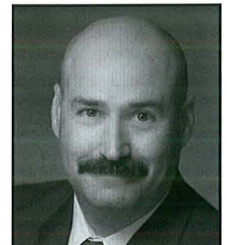
The award was given to them in recognition of their innovative thinking and hard work to create the NUCA Dividend Insurance Program. They are responsible for developing a program that is a tremendous member benefit, which realized its first dividend for 2010.

The program is one that benefits members by returning a portion of their premium directly to them, and benefits our association by recruiting new members and retaining existing ones.

Congratulations to all on your well-deserved awards! You are all an integral part of ensuring the continued growth and success of NUCA of Oregon & SW Washington!



**Outstanding Achievement Award**  
*Cynthia Hilton*



**Outstanding Achievement Award**  
*Jeff Broyles*



## 2012-2013 CALENDAR OF EVENTS

### 2012

*March*

12-16 NUCA Convention 2012 –  
Ft. Worth, TX

*April*

5 Board Meeting – NW College of  
Construction

10 General Meeting – Engineers Night –  
Monarch Hotel, Clackamas

*May*

3 Board Meeting – NW College of  
Construction

8-10 Washington, D.C. Summit

19-20 Dozer Day – Vancouver, WA  
Cemex/Fisher Quarry

*June*

7 Board Meeting – NW College of  
Construction

19 General Meeting – Monarch Hotel,  
Clackamas

*July*

12 Board Meeting – NW College of  
Construction

*August*

2 Board Meeting – NW College of  
Construction

24 NUCA Golf Tournament –  
Gresham Golf Course

*September*

6 Board Meeting – NW College of  
Construction

18 General Meeting – Monarch Hotel,  
Clackamas

*October*

4 Board Meeting – NW College of  
Construction

16 General Meeting – Monarch Hotel,  
Clackamas

*November*

1 Board Meeting – NW College of  
Construction

10 Holiday Auction – Portland Hilton

*December*

6 Board Meeting – NW College of  
Construction

11 General Meeting – Board Elections –  
Monarch Hotel, Clackamas

### 2013

*January*

3 Board Meeting – NW College of  
Construction

*February*

7 Board Meeting – NW College of  
Construction

19 General Meeting – Monarch Hotel,  
Clackamas

## The NUCA Holiday Auction

**November 10, 2012**  
**at the Portland Hilton Hotel – Downtown**  
**Room block available**



**Dinner, Games, Silent and Oral Auctions, Dancing to “DesignBand”**





### WHAT IS EZ STREET?

*EZ Street is a high performance, permanent, polymer-modified cold asphalt material requiring no mixing or tack coat.*

### WHERE IS IT USED?

- Utility Trenches
- Pothole repair
- Concrete repair
- Small asphalt overlays
- Wide crack restoration
- Patching utility adjustments

# **EZ**

## **STREET®**

### **COLD ASPHALT**

### WHAT DOES IT DO?

*EZ Street works in water, provides greater workability, and superior performance. It works in all weather conditions and requires minimal preparation.*

### WHO USES EZ STREET?

*WSDOT, ODOT, ITD, AlaskaDOT, City of Seattle, Pierce County, City of Portland, City of Spokane, City of Yakima and many general and specialty contractors in the PNW.*



EZ Street is APPROVED for use by WSDOT, ODOT, ITD, AlaskaDOT, Seattle DOT, Portland DOT, etc.

[www.lakesideind.com](http://www.lakesideind.com)  
[www.ezstreet-miami.com](http://www.ezstreet-miami.com)

**Contact:**

**Rick Rawlings**

**at: 425-313-2681**

**[rickr@lakesideind.com](mailto:rickr@lakesideind.com)**

Available  
by the ton,  
in 1 & 2 ton  
bulk bags &  
50# bags

FOB Seattle  
Dock



# **Dependable, Affordable... TRIAD**



**Link-Belt** **Kawasaki**  
EXCAVATORS • FORESTRY  
DEMOLITION • MATERIAL HANDLING

**TRAMAC**  **Link-Belt**  
CRANES

## **Sales ▴ Rentals ▴ Service ▴ Parts**

**Portland | Eugene | Prineville | Seattle | Spokane**

800.221.8512 800.342.6780 888.662.2940 800.622.8876 800.945.9168

[www.triadmachinery.com](http://www.triadmachinery.com)

**TRIAD**  
**MACHINERY**  
CONSTRUCTION  
AND FORESTRY



## Member Benefits

# \*\*\* NUCA Insurance Dividend Program DIVIDEND RETURNED FOR 2010!!! \*\*\*

A truly proprietary, State approved insurance benefit for all active contractor and (select) associate members of NUCA of Oregon & SW Washington, allowing for up to 24.9% of annual premium returned.

- General Liability
- Auto Liability
- Property
- Inland Marine
- Umbrella\*

*\*Umbrella quotes/coverage available but line is not included in dividend calculation*

Highlights of the program include:

- Competitive Rates
  - Composite GL Rating available based on Sales or Payroll
  - Tailored coverages – NO subsidence exclusion, NO residential exclusion, full 10-year statute of limitations coverage, Ltd. Jobsite Pollution, Ltd. Demolition, etc.
- Dividend payout based on loss results of the group – up to 24.9% of premium returned.
- No Joint & Several liability for members
- No Assessments upon the group for less than favorable results.
- Carrier and Sponsor / Administrator Advertising \$\$ back to NUCA of Oregon & SW Washington based on participation

Sponsored and Administered by NUCA of Oregon & SW Washington, underwritten by Bituminous Insurance Company (AM Best rated A+ IX)



Health Insurance exclusive to NUCA members!!

### Program Benefits

**- Competitive RATES!!!**

- Large Group Purchasing Power
- Coverage for firms with 2 or more enrolled employees
  - Long-term Rate Stability
- Large Group Service Center for Superior Claims and - Administrative Services
  - Program Design
- 14 – Medical plans to choose from
- 3 – Rx plan options
- 2 Vision plans
- 3 – Dental plan options
- Alternative Care – included w/ All plans



We've got you under our wing.®

Aflac is built on two distinct platforms, Individual and Group. All NUCA members can access the Aflac Individual Platform and certain guidelines, such as number of employees, need to be met to offer the Aflac Group Platform.

### Available Aflac Programs:

Accident Protection  
Sickness Protection  
Short Term Disability  
Cancer Protection  
Critical Care and Recovery  
Critical Illness Lump Sum Protection  
Hospital Protection  
Intensive Care Unit Protection  
Vision Protection  
Dental Protection

### **Discounts on Cellular Service and Equipment through Sprint/Nextel Corporation**

- 10% Discount Off all Rate Plans.
- Flat Rate Pricing on All Equipment (Usually \$50.00 Off)
- 15% of Accessories.

### **30% Discount on Books & Lab Fees at the NW College of Construction Educational Scholarships**

- \$1500 scholarship for a current high school senior
- \$1500 scholarship for a student currently enrolled in college
- \$1500 scholarship to the NW College of Construction

### **Access to Resource Materials**

- Pipelayer Training DVD
- Transporting Construction Equipment DVD
- Rental Rate Blue Book





## 2012 MEMBERSHIP APPLICATION

### NUCA OF OREGON & SW WASHINGTON

**COMPANY NAME:** \_\_\_\_\_  
**OWNER/REPRESENTATIVE(S)** \_\_\_\_\_

**ADDRESS:** \_\_\_\_\_

**CITY:** \_\_\_\_\_

**STATE:** \_\_\_\_\_ **ZIP CODE:** \_\_\_\_\_ **PHONE:** \_\_\_\_\_

**FAX:** \_\_\_\_\_ **EMAIL:** \_\_\_\_\_

**INTERNET ADDRESS:** \_\_\_\_\_

**Check one box:**

- ☐ **CONTRACTOR MEMBERSHIP**  
☐ **ASSOCIATE/AFFILIATE MEMBERSHIP**

This application is subject to acceptance by the NUCA of Oregon & SW Washington Board of Directors within thirty days. Should this application be accepted, the below signed agrees to the following statement. The certification of membership to be issued shall be subject to the provisions of the Articles of Incorporation Bylaws. The code of ethics and rules and regulations shall be considered an essential part of the membership between NUCAORSWWA and the below signed.

**AUTHORIZED SIGNATURE:** \_\_\_\_\_

**DATE:** \_\_\_\_\_ **REFERRED BY:** \_\_\_\_\_

**POSSIBLE MEMBERSHIP PROSPECTS:** \_\_\_\_\_

WE APPRECIATE YOUR INTEREST IN OUR ORGANIZATION!  
FOR BOARD ACCEPTANCE, YOU MUST SUBMIT YOUR DUES WITH THIS APPLICATION

## DUES SCHEDULE

### CONTRACTOR MEMBERS

#### ALL CONTRACTORS.....SEE BELOW

CONTRACTOR – Any person, firm or corporation engaged in utility construction. Any person, firm or corporation engaged in the construction and/or rehabilitation of utility systems including, but not limited to, storm sewers, sanitary sewers and drainage, systems, water lines, cables (underground communication and electric), ducts, conduits, gas lines, tunneling, boring, trenchless construction, treatment systems, pump stations and other utility construction and appurtenances thereof.

A.) National dues are based on your company's total annual utility construction revenue only:

Less than \$2,000,000	\$ 625	\$2,000,000 to \$5,000,000	\$1,260
\$5,000,001 to \$10,000,000	\$1,520	More than \$10,000,000	\$1,775

Please add the above amount to the following:

B.) Local Dues - NUCA of OR & SW WA

+  
\$ 750

C.) Total Contractor Dues

\$ \_\_\_\_\_

### ASSOCIATE & AFFILIATE MEMBERS

#### ALL CHAPTER ASSOCIATES & AFFILIATES

\$ 750

ASSOCIATE/AFFILIATE – Any person, firm or corporation involved in the utility construction industry, as a supplier of equipment, materials, or service.

**ASSOCIATES & AFFILIATES ARE SUSTAINING MEMBERS OF THE LOCAL CHAPTER ONLY.**  
**NATIONAL MEMBERSHIP IS NOT INCLUDED**

**MEMBERSHIP COMMITTEE CHAIR:** Roy Moore, MEI Group, (503) 252-1180

**NUCA EXECUTIVE DIRECTOR:** Melinda Dailey (503) 742-8877

**CHECKS SHOULD BE MADE PAYABLE TO:** NUCA Of Oregon & SW Washington

**AND MAILED WITH MEMBERSHIP APPLICATION TO:** NUCA of OR & SW WA, P.O. Box 301251, Portland, OR 97294-9251





## 2012 NUCA of Oregon & SW Washington PAC Membership Form

NUCA's voluntary political action committee is committed to improving and protecting our industry through better government. It's easy to join the NUCA of Oregon & SW Washington PAC. Just complete and return this membership form.

### Club Level

- ☐ President - \$1,000
- ☐ Vice President - \$500
- ☐ Secretary - \$250
- ☐ Treasurer - \$150
- ☐ Capitol - \$75
- ☐ Patriot - \$25

### Payment Method:

\_\_\_\_\_ My personal check is enclosed

\_\_\_\_\_ Please charge my personal Visa/Mastercard/AMEX

Amount \$ \_\_\_\_\_

Card # \_\_\_\_\_

Exp. Date \_\_\_\_\_

CID (3 or 4 digits on back of card) \_\_\_\_\_

### Please print the following information:

Name: \_\_\_\_\_ Phone: \_\_\_\_\_

E-mail address: \_\_\_\_\_ Fax number: \_\_\_\_\_

Personal address: \_\_\_\_\_

City: \_\_\_\_\_ State: \_\_\_\_\_ Zip: \_\_\_\_\_

Occupation: \_\_\_\_\_ Company: \_\_\_\_\_

Signature: \_\_\_\_\_ Date: \_\_\_\_\_

Please return by mail to NUCA of Oregon & SW Washington PAC  
P.O. Box 301251, Portland, OR 97294-9251 or by fax to (503) 650-7555



## 2012 NUCA of Oregon & SW Washington Executive Board



**President**  
Steve Dukart  
Duke Construction  
& Excavation



**Vice President**  
Dave Short  
S-2 Contractors, Inc.



**Secretary/Treasurer**  
Kerry Kuenzi  
K&E Excavating, Inc.

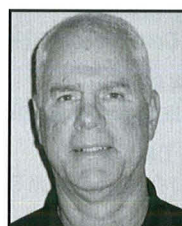
## 2012 NUCA of Oregon & SW Washington Board Members



**Alan Aplin**  
Kerr Contractors, Inc.  
  
*Contractor  
Board Member*



**Kasey Cooper**  
Sawcutters NW  
  
*Associate  
Board Member*



**Kevin Culligan**  
Peterson Cat  
  
*Associate  
Board Member*



2008-2009  
**John Kalkhoven**  
Titan Utilities,  
LLC



**Rick Day**  
Advantage  
Precast, Inc.  
  
*Associate  
Board Member*



**Dick Classen**  
K&E Excavating, Inc.  
  
*Contractor  
Board Member*



**Ryan McDonald**  
McDonald  
Excavating, Inc.  
  
*Contractor  
Board Member*



2006-2007  
2011  
*National  
Contractor  
Director*  
**Bill Martinak**  
Emery & Sons  
Construction, Inc.



**Dawn Morse**  
D.P. Nicoli, Inc.  
  
*Associate  
Board Member*



**Brick Obye**  
Brix Paving  
Company  
  
*Associate  
Board Member*



**Billy Stimpson**  
Knife River  
  
*Contractor  
Board Member*



2004-2005  
**Roy Moore**  
MEI Group



**Kevin Tapani**  
Tapani  
Underground, Inc.  
  
*Contractor  
Board Member*



**Mathew Warrington**  
Westech  
Construction, Inc.  
  
*Contractor  
Board Member*



**Joe Yazbeck**  
Yazbeck, Cloran &  
Bowser, LLC  
  
*Associate  
Board Member*



2002-2003  
**Jim Gonzales**  
Gonzales Boring  
&  
Tunneling, Inc.



*Executive  
Director*  
**Melinda Dailey**



*Immediate Past President*  
2010  
*Past President* 1998-1999  
2009 *National President*  
**Lyle Schellenberg**  
Armadillo Underground, Inc.



2000-2001  
**Gary Stephens**  
MEI Group



## 2012 Committees

### Associates

**DAWN MORSE, Chair**  
D.P. Nicoli, Inc., 503-209-6975  
Email: dmorse@dpmnicoli.com

**GEOFF BROWN**  
KG Specialties, 503-669-8233

**CHAD KLINE**  
Triad Machinery, 503-254-5100

**JANELLE MARKOVICH**  
Assurety Northwest Insurance Agency,  
503-205-8111

**JEFF BROYLES**  
Beecher Carlson Insurance Agency,  
503-222-1831

### Golf

**LINDA BUCK, Chair**  
Gonzales Boring & Tunneling, Inc., 503-647-2218  
Email: lindagbt@aol.com

**GEOFF BROWN**  
KG Specialties, 503-669-8233

**DAWN MORSE**  
D.P. Nicoli, Inc., 503-209-6975

**NICK FRAPPIER**  
Vermeer Pacific, 503-282-0694

**TRAVIS BERG**  
D.P. Nicoli, Inc., 503-913-4272

### Legislative

**BILL MARTINAK, Chair**  
Emery & Sons Construction, Inc., 503-588-7576  
Email: bill@emeryandsons.com

**BILLY STIMPSON**  
Knife River, 503-805-1270

**RICK DAY**  
Advantage Precast, Inc., 503-390-2048

**MATT GEBAROWSKI**  
DirtLogic, LLC, 877-775-6442

**LYLE SCHELLENBERG**  
Next Step Business Coaching, 503-949-9670

**CYNTHIA HILTON**  
Biggs Insurance Services, 360-828-3780

**JANELLE MARKOVICH**  
Assurety Northwest Insurance Agency,  
503-205-8111

**DAVE SHORT**  
S-2 Contractors, Inc., 503-849-2486

**JOSEPH TRIPI**  
Law Office of Joseph A. Tripi, P.C., 503-546-1505

**TOM LARKIN**  
Stewart Sokol & Gray, LLC, 503-221-0699

### Public Works – Gresham

**BILLY STIMPSON, Chair**  
Knife River, 503-805-1270  
Email: billy.stimpson@kniferiver.com

**DAVE SHORT**  
S-2 Contractors, Inc., 503-849-2486

**JOSEPH A. YAZBECK JR.**  
Yazbeck, Cloran & Bowser P.C., 503-227-1428

**JANELLE MARKOVICH**  
Assurety Northwest Insurance Agency,  
503-205-8111

**STEVE DUKART**  
Duke Construction & Excavation, 503-519-5986

**DAWN MORSE**  
D.P. Nicoli, Inc., 503-209-6975

**DAVE CALLISTER**  
United Rentals Trench Safety, 503-708-6479

**EVAN WILLIAMS**  
A D Traffic Control Services, 503-715-5760

### Public Works Portland – BES

**JOHN KALKHOVEN, Chair**  
Titan Utilities, LLC, 503-706-8288  
Email: jfkccs@comcast.net

**GARY STEPHENS**  
MEI Group, 503-252-1180

**DAVE SHORT**  
S-2 Contractors, Inc., 503-849-2486

**STEVE DUKART**  
Duke Construction & Excavation, 503-519-5986

**DAWN MORSE**  
D.P. Nicoli, Inc., 503-209-6975

**LANCE LANDIS**  
Landis & Landis Construction, Inc., 503-466-9043

**DAN JOHNSTON**  
Dunn Construction, Inc., 503-408-7601

**DAVE CALLISTER**  
United Rentals Trench Safety, 503-708-6479

**BRET TAYLOR**  
Cascade Shoring, LLC, 503-777-2017

**JOHNATHAN WOOLWORTH**  
Willis of Oregon, 503-224-4155

### Public Works Clean Water Services

**JOHN KALKHOVEN, Chair**  
Titan Utilities, LLC, 503-706-8288

**LANCE LANDIS**  
Landis & Landis Construction, Inc., 503-466-9043

**BILLY STIMPSON**  
Knife River, 503-944-3500

**BILL MARTINAK**  
Emery & Sons Construction, Inc., 503-588-7576

**DAVE CALLISTER**  
United Rentals Trench Safety, 503-708-6479

### Scholarship and Education

**DAWN MORSE, Co-Chair**  
D.P. Nicoli, Inc., 503-209-6975  
Email: dmorse@dpmnicoli.com

**PHIL MARTINSON, Co-Chair**  
Phil Martinson Engineering, Inc., 503-557-1555  
Email: phil@pmeng.com

**JOHNATHAN WOOLWORTH**  
Willis of Oregon, 503-224-4155

**RICK DAY**  
Advantage Precast, Inc., 503-390-2048

**DARRIN OELKE**  
Travelers Bond, 503-534-4290

### Budget & Investment

**RICK DAY, Chair**  
Advantage Precast, Inc., 503-390-2048  
Email: advantageprecast@comcast.net

**JOHN KALKHOVEN**  
Titan Utilities, LLC, 503-706-8288

**STEVE DUKART**  
Duke Construction & Excavation, 503-519-5986

**DAVE SHORT**  
S-2 Contractors, Inc., 503-849-2486

**KERRY KUENZI**  
K & E Excavating, Inc., 503-399-4833

**MICHAEL TUDOR**  
Sloy, Dahl & Holst, Inc., 503-248-9800

### Dividend Program Safety / Loss Control

**BRAD JOHNSON, Chair**  
Westech Construction, Inc., 503-777-7000  
Email: brad@wtc-inc.com

**SCOTT COPELAND**  
Kerr Contractors, Inc., 971-216-0550

**JOHN DUKART**  
Duke Construction & Excavation, 503-492-0530

**GINGER EDWARDS**  
Vancouver Paving, 360-573-7973

**BRAD CUTLER**  
Bituminous Insurance, 800-383-1122

*Continued next page*



## 2012 Committees

### DEREK SADOWSKI

A.G. Sadowski Company, 503-362-2711

### RICK KOWALSKI

Anchor Insurance, 503-224-2500

### JANELLE MARKOVICH

Assurety Northwest Insurance Agency,  
503-205-8111

### JEFF BROYLES

Beecher Carlson Insurance Agency, LLC,  
503-219-3202

### CYNTHIA HILTON

Biggs Insurance Services, 360-828-3780

## Safety

### DICK CLASSEN, *Chair*

K & E Excavating, Inc., 503-399-4833  
Email: dick@keex.net

### DAWN MORSE

D.P. Nicoli, Inc., 503-209-6975

### JENNIFER CARTER

Emery & Sons Construction, Inc., 503-588-7576

### JOHN DUKART

Duke Construction & Excavation, 503-519-5987

### JIM CRAIG

United Rentals Trench Safety, 503-255-3449

### JEFF BROYLES

Beecher Carlson Insurance Agency, LLC,  
503-219-3202

### JOHN MITCHAM

Ness & Campbell Crane, 503-283-3111

### CHRIS MILLER

AGC - Oregon Columbia Chapter, 503-682-3363

### CYNTHIA HILTON

Biggs Insurance Services, 360-828-3780

## Membership & Publicity

### ROY MOORE, *Co-Chair*

MEI Group, 503-252-1180  
Email: roy.moore@themeigroup.com

### DAWN MORSE, *Co-Chair*

D.P. Nicoli, Inc., 503-209-6975  
Email: dmorse@dpnicoli.com

### DAVE SHORT

S-2 Contractors, Inc., 503-849-2486

### PHIL MARTINSON

Phil Martinson Engineering, Inc., 503-557-1555

### GEOFF BROWN

KG Specialties, 503-669-8233

## Public Works – Salem

### BILL MARTINAK, *Chair*

Emery & Sons Construction, Inc., 503-588-7576  
Email: bill@emeryandsons.com

### RICK DAY

Advantage Precast, Inc., 503-390-2048

### KERRY KUENZI

K & E Excavating, Inc., 503-399-4833

## Public Works Portland – Water

### JIM GONZALES, *Chair*

Gonzales Boring & Tunneling, Inc., 503-647-2218  
Email: jimgbt@aol.com

### DAN JOHNSTON

Dunn Construction, Inc., 503-408-7601

### LANCE LANDIS

Landis & Landis Construction, Inc.,  
503-466-9043

### DAVE SHORT

S-2 Contractors, Inc., 503-849-2486

### STEVE DUKART

Duke Construction & Excavation, 503-519-5986

### DAWN MORSE

D.P. Nicoli, Inc., 503-209-6975

### GARY STEPHENS

MEI Group, 503-252-1180

## Public Works – Clark County

### KEVIN TAPANI, *Chair*

Tapani Underground, Inc., 360-687-1148

### BILL MONTGOMERY

CEMEX, 360-254-7770

### CHUCK ROSE

CEMEX, 360-254-7770

### SHANE TAPANI

Tapani Underground, Inc., 360-687-1148

### RICK SCALF

CalPortland, 503-355-2600

### RYAN McDONALD

McDonald Excavating, Inc., 360-835-8794

### JEFF BROYLES

Beecher Carlson Insurance Agency,  
503-219-3202

### JOHNATHAN WOOLWORTH

Willis of Oregon, 503-224-4155

## Public Agencies Self-Performing Work

### JOHN KALKHOVEN, *Chair*

Titan Utilities, LLC, 503-706-8288  
Email: jfkccs@comcast.net

### ROY MOORE

MEI Group, 503-252-1180

### BRICK OBYE

Brix Paving Co., 503-570-9355

## Auction

### KATHY MOORE, *Co-Chair*

MEI Group, 503-252-1180  
Email: kathy.moore@themeigroup.com

### JENNIFER DIXSON, *Co-Chair*

503-753-9408  
Email: jenny.dixson@gmail.com

### DAWN MORSE

D.P. Nicoli, Inc., 503-209-6975

### JANELLE MARKOVICH

Assurety Northwest Insurance Agency,  
503-205-8111

### AIMEE GEBAROWSKI

DirtLogic, LLC, 877-775-6442

### JAMIE WHIPPLE

MEI Group, 503-252-1180

### LISA NEMMERT

MEI Group, 503-252-1180





### Armadillo Underground, Inc.

P.O. Box 12219  
Salem, OR 97309  
Phone: 503-588-8050  
Fax: 503-362-1008  
Web site: www.armadillounderground.com  
**Tim O'Neil**, timo@armadillounderground.com  
See Our Ad Page 22

### Bones Construction, Inc.

3508 SW 209th Ave.  
Aloha, OR 97007  
Phone: 503-649-5682  
Fax: 503-649-1717  
**Scott R. Bernhardt**, scott@bonesco.com

### Brotherton Pipeline, Inc.

11 S. Frontage Rd.  
Gold Hill, OR 97525  
Phone: 541-855-7062  
Fax: 541-855-7284  
Web site: www.bplinc.com  
**Jim Brotherton**

### Clackamas Construction, Inc.

P.O. Box 279  
28890 SE Hwy. 212  
Boring, OR 97009  
Phone: 503-663-1144  
Fax: 503-663-6251  
**Jeff Mueller**, twohigh1222@comcast.net  
**Bobbie Mohler**, bobbie5164@comcast.net

### Coffman Excavation, LLC

13014 Clackamas River Dr.  
P.O. Box 687  
Oregon City, OR 97045  
Phone: 503-656-7000  
Toll Free: 888-656-3101  
Fax: 503-656-0686  
Web site: www.coffmanexcavation.com  
**Jim Shannon**, President  
**Hank Lane**, hlane@coffmanteam.com

### CP Construction, LLC

225 Driver Valley Road #100  
Oakland, OR 97462  
Phone: 541-459-3959  
Fax: 541-459-3995  
Web site: www.cpcon.net  
**Todd Carson**, todd.carson@cpcon.net  
**Jon Silbernagel**

### D & T Excavation, Inc.

*Let D&T Excavation's team of experienced personnel take care of all your earthwork needs. We perform as promised, in a professional, efficient, safe, and detailed manner. We strive to exceed our client's expectations.*

P.O. Box 3767  
Wilsonville, OR 97070  
Phone: 503-263-2607  
Fax: 503-263-2648  
**Derek Osterholme**,  
dereko@dtexcavation.com

### Davidson's Masonry, Inc.

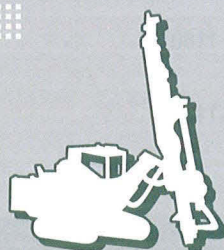
2295 Rural Ave. SE  
Salem, OR 97302  
Phone: 503-364-3715  
Fax: 503-364-3487  
Web site: www.davidsonsmasonry.com  
**Davis Evenson**, davis@davidsonsmasonry.com  
**Tom Moore**

### Del Barber Excavation, Inc.

P.O. Box 6554  
Bend, OR 97708  
Phone: 541-504-1100  
Fax: 541-548-6910  
**Del Barber**  
**Rita Barber**, ritasdirt@yahoo.com

### Dirt & Aggregate Interchange, Inc.

20905 NE Sandy Blvd.  
Fairview, OR 97024  
Phone: 503-661-5093  
Fax: 503-669-1192  
Email: contractor@dirtagg.com  
**Henry Pelfrey**, President  
**Corey Pelfrey**, Project Manager



WWW.MCCALLUMROCKDRILLING.COM

# MCCALLUM ROCK DRILLING INC

115 STURDEVANT RD. CHEHALIS, WA 98532

MCCALLUM ROCK DRILLING INC. HAS BEEN PROVIDING SAFE, HIGH QUALITY, CONTROLLED DRILLING AND BLASTING SERVICES FOR THE LAST 20 YEARS. MRD SPECIALIZES IN CONTROLLED BLASTING OPERATIONS OF ALL TYPES, INCLUDING SUBDIVISIONS, TRENCHING, COMMERCIAL QUARRIES, ROADS AND HIGHWAYS.

BLASTING  
CONSTRUCTION  
RESIDENTIAL  
QUARRY  
SUBDIVISION  
TRENCHING

360-748-7259 OFFICE  
360-748-8823 FAX





**Duke Construction & Excavation**

17860 SE Foster  
Damascus, OR 97089  
Phone: 503-492-0530  
Fax: 503-492-0760  
Web site: www.dukeconst.com  
**Steve Dukart**, steve@dukeconst.com  
**John Dukart**, john@dukeconst.com  
**Jim Dukart**  
See Our Ad Page 22

**Dunn Construction, Inc.**

1223 NW Eastwood Ave.  
Gresham, OR 97030  
Phone: 503-408-7601  
Fax: 503-408-7602  
**Frank Dunn**  
**Dan Johnston**, dan@dunnconstructionpdx.com

**Emery & Sons Construction, Inc.**

P.O. Box 4109  
Salem, OR 97302  
Phone: 503-588-7576  
Fax: 503-371-6637  
Web site: www.emeryandsons.com  
**Bill Martinak**, bill@emeryandsons.com  
See Our Ad Page 21

**Extreme Excavating, Inc.**

P.O. Box 3129  
Clackamas, OR 97015  
Phone: 503-722-8088  
Fax: 503-722-8488  
Web site: www.extremeex.com  
**Shawn Duntley**  
**Tiffany Duntley**  
See Our Ad Page 25

**Gene S. McMurrin, Inc.**

5059 State St.  
Salem, OR 97317  
Phone: 503-581-2274  
Fax: 503-581-6532  
**Kenneth E. McMurrin**, kengsmc@aol.com

**Gonzales Boring & Tunneling, Inc.**

P.O. Box 187  
North Plains, OR 97133  
Phone: 503-647-2218  
Toll free: 800-486-8523  
Fax: 503-647-5226  
**Jim Gonzales**, jimgbt@aol.com  
See Our Ad Page 2

**Gregory Pacific Corp.**

11650 SW 67th Ave. Ste. 130  
Portland, OR 97223  
Phone: 503-639-3887  
Fax: 503-624-6860  
**Sam Wiseman**, sam@gregorypacific.com

**Humbert Asphalt, Inc.**

84899 Hwy. 11  
Milton Freewater, OR 97862  
Phone: 541-938-3174  
Fax: 541-938-5001  
Email: humbertasphalt@hotmail.com  
**Jennifer Humbert**  
**Troy Humbert**

**Interlaken, Inc.**

P.O. Box 2010  
Fairview, OR 97024  
Phone: 503-674-7460  
Fax: 503-674-7020  
Web site: www.WeDigPortland.com  
**Kendall Miller**, kendall@interlaken-inc.com  
Cell: 971-404-9244  
WBE/ESB/DBD #4005  
CCB #160018

**Iron Mountain Excavation, LLC**

7350 SW Straughan Rd.  
Hillsboro, OR 97123  
Phone: 971-344-2224  
**Brian Lorence**  
**Allen Kalkhoven**

**James W. Fowler Co.**

*James W. Fowler Co. is a diversified general contractor specializing in constructing complex water and wastewater treatment facilities; fish hatcheries; microtunneling and trenchless projects; and sewer and utility pipeline projects.*

P.O. Box 489  
Dallas, OR 97338  
Phone: 503-623-5373  
Fax: 503-623-9117  
Web site: www.jwfowler.com  
**John Fowler**, Vice President,  
johnf@jwfowler.com

**K & E Excavating, Inc.**

3871 Langley St. SE  
Salem, OR 97317  
Phone: 503-399-4833  
Fax: 503-399-4767  
Email: kerry@keex.net  
Web site: www.keex.net  
**Kerry Kuenzi**, President  
**Eric Kuenzi**, Vice President  
See Our Ad Page 16

**Ken Leahy Construction, Inc.**

915 S. 12th Ave.  
Cornelius, OR 97113  
Phone: 503-357-2193  
Fax: 503-357-3649  
Web site: www.kenleahy.com  
**Chuck Leahy**, chuckl@kenleahy.com  
**Scott Zollinger**, scottz@kenleahy.com  
**Slade Leahy**, sladel@kenleahy.com

**Kerr Contractors, Inc.**

395 Shenandoah Lane NE  
P.O. Box 1060  
Woodburn, OR 97071  
Phone: 971-216-0050  
Fax: 971-216-0079  
Web site: www.kerrcontractors.com  
**Brent Kerr**, brent@kerrcontractors.com  
**Alan Aplin**, aaplin@kerrcontractors.com  
**Tim Kerr**, tkerr@kerrcontractors.com

**ADVANTAGE PRECAST, INC.**

*"A locally Owned Small Business Where Service Comes First"*

**For all your precast concrete product needs!**



**Over 25 years of experience in the precast concrete industry.**

- Manholes (24" - 144")
- Catch basins (20 types)
- Retaining Walls
- Box Culvert
- Arch Culvert (3-sided)
- Custom Structures
- Water Tanks
- Stormwater Detention
- Pollution Control Structures
- Pipe
- Architectural Precast

**CALL US TODAY!**  
**(503) 390-2048**

1302 Candlewood Dr. Keizer, OR.

info@advantageprecast.com  
www.advantageprecast.com





**K&E**  
**EXCAVATING**  
INCORPORATED  
(P) 503-399-4833 • www.keex.net

SPECIALIZING IN HEAVY  
CIVIL CONSTRUCTION AND  
UNDERGROUND UTILITIES

*Where our integrity and your satisfaction are #1*

**18 MGD just became 33,  
time is tight and Mother Nature's  
about to toss you a curve ball.**

**Better call Baker.**



**There are a thousand things that can go wrong at your jobsite. Your rental equipment shouldn't be one of them.**



BakerCorp provides the largest, most dependable equipment rental fleet of tanks, pumps, filtration and specialty media for any project application.

**BakerCorp. The one certainty at your jobsite.**

**Rental equipment for:**

Construction / Municipal / Sewer Bypass  
Refineries / Environmental Remediation  
Power Plants / Quarries

6400 S.E. 101st Ave. / Portland, OR 97266  
(503) 775-7211 / [www.bakercorp.com](http://www.bakercorp.com)

**BAKERCORP**  
PEOPLE. EQUIPMENT. SOLUTIONS.

**Kiewit-Bilfinger Berger**

2016 SE Water Ave.  
Portland, OR 97214  
Phone: 503-290-7000  
Fax: 503-233-8977  
Web site: [www.kbbescso.com](http://www.kbbescso.com)  
**Niels Kofoed** Project Manager,  
[niels.kofoed@kiewit.com](mailto:niels.kofoed@kiewit.com)

**Landis & Landis Construction, Inc.**

P.O. Box 50  
Marylhurst, OR 97036  
Phone: 503-466-9043  
Fax: 503-213-5964  
Web site: [www.lconstruction.com](http://www.lconstruction.com)  
**Thane Landis**  
**Lance Landis**, [llandis@lconstruction.com](mailto:llandis@lconstruction.com)

**LCG Pence Construction, LLC**

2747 Pence Loop SE  
Salem, OR 97302  
Phone: 503-399-7223  
Fax: 503-585-7477  
Web site: [www.lcgpence.com](http://www.lcgpence.com)  
**Matt Smith**, [matt.smith@lcgpence.com](mailto:matt.smith@lcgpence.com)

**LKE Corporation**

P.O. Box 350  
Washougal, WA 98671  
Phone: 360-837-1700  
Fax: 360-838-0012  
Web site: [www.lkecorporation.com](http://www.lkecorporation.com)  
**Lorraine Kim Erioin**, [kim@lkecorporation.com](mailto:kim@lkecorporation.com)

**M&M Earthworks**

9570 SW Barbur Blvd. #311  
Portland, OR 97219  
Phone: 503-459-4732  
Fax: 503-213-5886  
Web site: [www.mmearthworks.com](http://www.mmearthworks.com)  
**Mitch Seitzinger**, [mitch@mmearthworks.com](mailto:mitch@mmearthworks.com)  
**Mark Syska**

**Mark Latham Excavation, Inc.**

84 SE 5th St. #100  
Bend, OR 97702  
Phone: 541-382-8267  
Fax: 541-382-4367  
Web site: [www.lathamexcavation.com](http://www.lathamexcavation.com)  
**Pat McClain**  
**Cougar Caverhill**, [cougar@lathamexcavation.com](mailto:cougar@lathamexcavation.com)

**McDonald Excavating, Inc.**

2719 Main St.  
Washougal, WA 98671  
Phone: 360-835-8794  
Fax: 360-835-1514  
Web site: [www.mcdonaldexcavatinginc.com](http://www.mcdonaldexcavatinginc.com)  
**Ryan McDonald**, Project Manager,  
[ryan@mcdonaldexcavatinginc.com](mailto:ryan@mcdonaldexcavatinginc.com)

**MEI Group**

**A Moore Excavation Company**

17090 NE San Rafael  
Portland, OR 97230  
P.O. Box 30569  
Portland, OR 97294  
Phone: 503-252-1180  
Fax: 503-252-1730  
Web site: [www.themeigroup.com](http://www.themeigroup.com)  
**Roy Moore**, [roy.moore@themeigroup.com](mailto:roy.moore@themeigroup.com)  
**Gary Stephens**, [gary.stephens@themeigroup.com](mailto:gary.stephens@themeigroup.com)  
See Our Ad Page 20



**Mid Pacific Enterprises, Inc.**

33965 Highway 99E  
Tangent, OR 97389  
Phone: 541-928-7731  
Fax: 541-928-7412  
Email: midpacific2003@yahoo.com  
**Merle M. Mitchell**  
**Carmen D. Mitchell**

**Miller & Sons Welding  
dba Miller & Sons Excavating**

61384 Dee Cox Road  
PO Box 650  
Heppner, OR 97836  
Phone: 541-676-9613  
Fax: 541-676-5298  
Email: millerandsons@centurytel.net  
**Ryan L. Miller**

**Northwest Earthmovers, Inc.**

P.O. Box 1609  
13600 SW Galbreath Dr.  
Sherwood, OR 97140  
Phone: 503-625-3100  
Fax: 503-625-3108  
**Craig Smelter**, csmelter@nwearthmovers.com

**Owen Construction, Inc.**

PO Box 21150  
Keizer, OR 97307  
Phone: 503-390-6936  
Fax: 503-390-6938  
Email: kelly@owenconstructioninc.com  
**Keith Owen**

**Pacific Excavation, Inc.**

79 N. Danebo Ave.  
Eugene, OR 97402  
Phone: 541-726-7380  
Fax: 541-726-7943  
Email: brad@pacificexc.com  
Web site: www.pacificexc.com  
**Brad Carlsen**

**Parsons Excavating, Inc.**

P.O. Box 3607  
Tualatin, OR 97062  
Phone: 503-590-3500  
Fax: 503-590-3550 Accounting/General  
Fax: 503-691-6800 Estimating  
Web site: www.parsonsexcavating.com  
**Gregory A. Parsons**, greg@parsonsexcavating.com

**Pihl Excavating**

41660 NW Sunset Hwy.  
Banks, OR 97106  
Phone: 503-324-6210  
Fax: 503-324-1017  
Web site: www.pihl-inc.com  
**Matt Pihl**, President  
**Mike Lawson**, Operations Manager,  
mike@pihl-inc.com

**Pioneer Asphalt, Inc.**

P.O. Box 38  
Pendleton, OR 97801  
Phone: 541-276-7885  
Fax: 541-276-7886  
Web site: www.pioneerasphaltinc.com  
**Jayne L. Clarke**, jayne@pioneerasphaltinc.com

**Portland Road & Driveway Co., Inc.**

10500 SE Jennifer St.  
Clackamas, OR 97015  
Phone: 503-650-5006  
Fax: 503-650-8022  
Web site: www.portlandroadinc.com  
**Michael D. Bright**  
**Thomas R. Bright**, tbright@portlandroadinc.com

**R&G Excavating, Inc.**

39300 Montgomery Dr.  
Scio, OR 97374  
Phone: 503-394-2190  
Fax: 503-394-2169  
Email: randgbids@aol.com  
**Gary Zellner**

**Renner Trucking and Excavating, Inc.**

228 SW Walnut St.  
Hillsboro, OR 97123  
Phone: 503-846-1512  
Fax: 503-846-1354  
Web site: www.rdrennertrucking.com  
**Shaughn Renner**, shaughn.renner@gmail.com

**Revcon, Inc.**

16655 SW Ivy Glenn St.  
Beaverton, OR 97007  
Phone: 503-848-7300  
Fax: 503-356-5599  
Web site: www.revconinc.net  
**Troy L. Sandstrom**, troy@revconinc.net  
**Chad Mitchell**

**GET IT DONE FROM ONE SOURCE:  
YOUR VOLVO DEALER.**

**LET'S WORK.**

Whatever you do, **Clyde/West** is there to help you do it. **Dependable equipment** – from construction and road building to forestry, utilities and more. **Support** – from sales and remarketing to reliable parts and service. **Offerings** – to get you working and keep you working – from Customer Support Agreements and CareTrack telematics to full-service financial solutions through Volvo Financial Services. It's all delivered directly through one source: **Clyde/West**.

We're the solution you can trust – before and after the sale. Let's work together. Contact your nearest **Clyde/West** location today.



**Eugene, OR**  
1550 Irving Rd.  
Eugene, OR 97402  
866-920-5933

**Portland, OR**  
13805 NE Sandy Blvd.  
Portland, OR 97230  
800-929-5933

**Seattle, WA**  
8207 S. 216th St.  
Kent, WA 98032  
800-935-5933

**Spokane, WA**  
4030 E. Trent Ave.  
Spokane, WA 99202  
800-938-5933

**VOLVO CONSTRUCTION EQUIPMENT**





### Rio Underground, LLC

11562 SW 175th  
Beaverton, OR 97007  
Phone: 503-706-8288  
Fax: 503-590-5113  
John Kalkhoven, jfkccs@comcast.net

### Robinson & Owen Heavy Construction, Inc.

P.O. Box 267  
Sisters, OR 97759  
Phone: 541-549-1848  
Fax: 541-549-0601  
Email: cheryl@robinsonandowen.com  
Michael Owen  
Rod Robinson

### Rod Anderson Construction, Inc.

4531 NW "A" Ave.  
Pendleton, OR 97801  
Phone: 541-276-4104  
Fax: 541-966-8860  
Web site: www.rodandersonconstruction.com  
Rodney L. Anderson,  
rod@rodandersonconstruction.com

### S-2 Contractors, Inc.

6860 S. Anderson Rd.  
Aurora, OR 97002  
Phone: 503-651-4000  
Fax: 503-651-4004  
Web site: www.s2contractorsinc.com  
Dick Shunn, dshunn@canby.com  
Dave Short, dshort@s2contractorsinc.com

### Stettler Supply & Construction

1810 Lana Ave. NE  
Salem, OR 97301  
Phone: 503-585-5550  
Fax: 503-581-6799  
Web site: www.stettlersupply.com  
Trevor Spiers, trevors@stettlersupply.com  
Kristi Conaway, kristic@stettlersupply.com  
See Our Ad Page 19

### Tapani Underground, Inc.

P.O. Box 1900  
1904 SE 6th Place  
Battle Ground, WA 98604  
Phone: 360-687-1148  
Fax: 360-687-7968  
Web site: www.tapaniunderground.com  
Kevin Tapani  
Shane Tapani, shanet@tapaniunderground.com

### Thompson Bros. Excavating, Inc.

18211 NE Fourth Plain Rd.  
Vancouver, WA 98682  
Phone: 360-254-7056  
Fax: 360-254-7195  
Web site: www.thompsonbrosexcavating.com  
Steve Ambuehl, Project Manager,  
steve@thompsonbrosexcavating.com

### Titan Utilities, LLC

Oregon ESB  
11562 SW 175th  
Beaverton, OR 97007  
Phone: 503-706-8288  
Fax: 503-590-5113  
John Kalkhoven, jfkccs@comcast.net

### Weitman Excavation, LLC

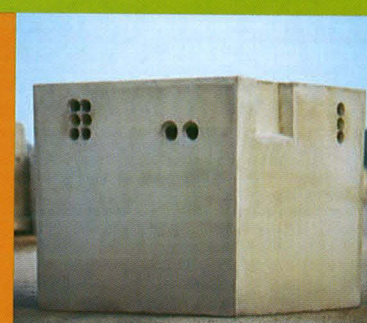
9775 SW Commerce Circle C-5  
Wilsonville, OR 97070  
Phone: 503-682-3322  
Fax: 503-682-3366  
James Weitman,  
jweitman@weitmanexcavation.com

### Westech Construction, Inc.

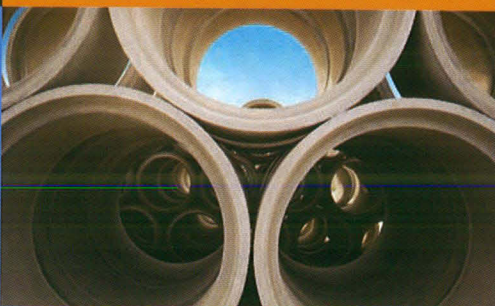
2204 NE 194th Ave.  
Portland, OR 97230  
Phone: 503-777-7000  
Fax: 503-774-3191  
Email: admin@wtc-inc.com  
William B. Johnson  
Mathew J. Warrington



Engineered and built to  
meet project specifications.



Hanson Pipe & Precast has  
the right solution to  
handle your project's needs.



Precast concrete  
building products  
where you need  
them, when you  
need them.



Portland, Oregon  
phone: (503) 285 8391  
toll free: (800) 509 7473

hansonpipeandprecast.com

 **Hanson**  
HEIDELBERGCEMENT Group



### A D Traffic Control Services

P.O. Box 28154  
Portland, OR 97228  
309 S McLoughlin Blvd.  
Oregon City, OR 97045  
Phone: 503-715-5760, 503-657-6636  
Fax: 503-715-0495

**Evan Williams**, [evan@pdxtraffic.com](mailto:evan@pdxtraffic.com)

### Advanced Drainage Systems, Inc.

204 SE Stonemill Drive #225  
Vancouver, WA 98684  
Phone: 800-733-8523  
Fax: 360-828-0774

Web site: [www.ads-pipe.com](http://www.ads-pipe.com)

**Scott Gordanier**, [scott.gordanier@ads-pipe.com](mailto:scott.gordanier@ads-pipe.com)  
Cell: 360-798-3731

**Jeff Mason**, [jeff.mason@ads-pipe.com](mailto:jeff.mason@ads-pipe.com)  
Cell: 503-358-1511

### Advantage Precast, Inc.

P.O. Box 21713  
Kelizer, OR 97307  
Phone: 503-390-2048  
Fax: 503-390-1645  
Email: [sales@advantageprecast.com](mailto:sales@advantageprecast.com)  
Web site: [www.advantageprecast.com](http://www.advantageprecast.com)

**Rick Day**

See Our Ad Page 15

### Allwest Underground

8324 NE MLK Jr. Blvd.  
Portland, OR 97211  
Phone: 503-546-8875  
Fax: 503-445-2020  
Web site: [www.allwestunderground.com](http://www.allwestunderground.com)

**Bob Checca**, *President*

**Jared Williams**, *Branch Manager*,  
[jwilliams@allwestunderground.com](mailto:jwilliams@allwestunderground.com)  
Cell: 971-563-6059

### American Sani-Can

*Simply the best. Portable restrooms, holding tanks. 37 years experience, locally owned and operated. Our reputation is based on the best quality, excellent customer service and a fair price. Visit our website: [www.americansanican.com](http://www.americansanican.com)*

P.O. Box 20265  
Portland, OR 97294  
Phone: Portland area 503-252-0550; Vancouver area: 360-253-5225  
Web site: [www.americansanican.com](http://www.americansanican.com)

**Craig Mendenhall**, *Owner*,  
[craig@americansanican.com](mailto:craig@americansanican.com)

**Jessica Jones**, *Manager*  
See Our Ad Page 27

### Ameron International Water Transmission Group

10100 West Linne Rd.  
Tracy, CA 95377  
Phone: 209-836-5050  
Fax: 209-832-2115

Web site: [www.ameronpipe.com](http://www.ameronpipe.com)

**Olivia Rios**, [olivia.rios@Nov.com](mailto:olivia.rios@Nov.com)

**Tony Catizzone**, [tony.catizzone@Nov.com](mailto:tony.catizzone@Nov.com)

**Edgar Benitez**, [edgar.benitez@Nov.com](mailto:edgar.benitez@Nov.com)

### BakerCorp

*BakerCorp is the industry leader in containment, pump, filtration and shoring equipment rental solutions. BakerCorp has over 100 locations nationwide and international operations in Europe, Canada and Mexico.*

6400 SE 101st Ave.  
Portland, OR 97266  
Phone: 503-775-7211  
Fax: 503-775-1176

Web: [www.bakercorp.com](http://www.bakercorp.com)

**Derek Reamy**, [dreamy@bakercorp.com](mailto:dreamy@bakercorp.com)

**Wes Freadman**, [wfreadman@bakercorp.com](mailto:wfreadman@bakercorp.com)  
See Our Ad Page 16

### Bravo Environmental

*"Bravo Environmental operates the largest, best-equipped fleet of Vector trucks, tankers, CCTV inspection units and sweepers in the region. Our field personnel are among the best trained in the industry."*

4927 NW Front Ave.  
Portland, OR 97210  
Phone: 503-261-9800  
Fax: 503-261-9900

Web site: [www.BravoEnvironmental.com](http://www.BravoEnvironmental.com)  
**Ron Bascue**, [rbascue@bravonw.com](mailto:rbascue@bravonw.com)

### Brix Paving Northwest, Inc.

P.O. Box 2388  
Tualatin, OR 97062  
Phone: 503-570-9355  
Fax: 503-570-9365

Web site: [www.brixpaving.com](http://www.brixpaving.com)

**Brick Obye**, [brick@brixpaving.com](mailto:brick@brixpaving.com)

**Rick Beyer**, [rbeyer@brixpaving.com](mailto:rbeyer@brixpaving.com)

### CalPortland

(formerly Glacier NW)

1050 N. River St.  
Portland, OR 97227  
Phone: 503-335-2600, main office  
Phone: 503-331-3740, dispatch  
Fax: 503-331-3700

Web site: [www.calportland.com](http://www.calportland.com)

**Troy Zilles**, [tzilles@calportland.com](mailto:tzilles@calportland.com)

**Rick Scalf**, [rscalf@calportland.com](mailto:rscalf@calportland.com)

Cell: 503-351-2431

See Our Ad Page 27

### Campbell Crane & Rigging Service (See Ness & Campbell Crane)

See Our Ad Page 4

### Cascade Concrete Products, Inc.

P.O. Box 1245  
Scappoose, OR 97056  
Toll Free: 800-642-7331  
Phone: 503-543-5213  
Fax: 503-543-5488

**Tom Gianotti**, [tom@cascade-concrete.com](mailto:tom@cascade-concrete.com)

**Dolores Gianotti**, [dolores@cascade-concrete.com](mailto:dolores@cascade-concrete.com)

**Stettler Supply Company**  
"Committed to Service Excellence"  
 1810 Lana Avenue NE • Salem, Oregon 97301  
503.585.5550-office 503.581.6799-facsimile  
CCB #33228 866.985.5550-toll free

*Your full service  
water, wastewater,  
pump systems  
contractor/supplier*

## COMMERCIAL INDUSTRIAL RESIDENTIAL

### MUNICIPAL/INDUSTRIAL

Water Pump Stations  
Sewer Pump Stations  
Water Treatment Plants  
Wastewater Treatment Plants  
Fabrication (Pipe, Manifolds, Etc.)  
Chemical Feed Pumps & Piping  
Water Features  
Mechanical Piping  
Value Engineering

### PUMPS

Submersible  
Vertical Turbine  
Jet Pumps  
Submersible Turbine  
Centrifugal  
Pump Installation  
Pump Repair  
Dewatering  
Construction Water

### WATER SUPPLY

Design & Installation  
Water Conditioning  
Water Softeners  
Water Purifiers  
Iron Removal  
Reverse Osmosis  
Water Testing  
Tanks & Reservoirs  
Backflow Certification



**24 HOUR EMERGENCY CALLS WELCOME**

1810 LANA AVE. NE, SALEM, OR 97301

EMERGENCIES: (503) 373-3488  
[www.stettlersupply.com](http://www.stettlersupply.com)

**503-585-5550**

**TOLL FREE: 1-866-985-5550**





[www.themeigroup.com](http://www.themeigroup.com)

**Safe • Innovative • Professional**  
Contracting since 1956

Utilities	Storm Drains
Sitework	Pipe Bursting
Drywells	Value Engineering
Excavation	Water/Sewage Projects
Demolition	Underground Construction
Subdivisions	

**(503) 252-1180**

Toll Free: 1-888-408-3351 • Fax: (503) 252-1730 • 17090 NE San Rafael • Portland, OR 97230



Associates Directory

**NUCA**

**Cascade Shoring, LLC**

7410-B SE Johnson Creek Blvd.  
Portland, OR 97206  
Phone: 503-777-2017  
Toll Free: 877-711-4015  
Fax: 503-777-2155

Web site: [www.cascadeshoring.com](http://www.cascadeshoring.com)

**Bret Taylor**, [bret@cascadeshoring.com](mailto:bret@cascadeshoring.com)

**Greg Heneveld**, [greg@cascadeshoring.com](mailto:greg@cascadeshoring.com)

**Case Power & Equipment**

1745 NE Columbia Blvd.  
Portland, OR 97211-1639  
Phone: 503-283-2461  
Fax: 503-283-2879

1665 Silverton Rd. NE  
Salem, OR 97303-3133  
Phone: 503-362-1371  
Fax: 503-362-8047

Web site: [www.casepower.com](http://www.casepower.com)

**Bill Hunsinger**, [billh@casepower.com](mailto:billh@casepower.com)  
Cell: 503-701-6104

**Mark Teneyck**, [markt@casepower.com](mailto:markt@casepower.com)  
Cell: 503-780-7569

**Randy Roppe**, [randyr@casepower.com](mailto:randyr@casepower.com)  
Cell: 503-930-7569

**CCS (A Division of PNE Corp.)**

*www.pnecorp.com – Serving the Western US from 6 Pacific NW locations; Emergency Spill Response (Land & Water), Hazwaste & Non-Hazwaste Services; UL Panels Design & Fabrication, Mobile Filter Pressing, Waste Minimization, Hydro-Excavation, Jet-Rodding, Vacs, Tankers, Hydroblasting, & Sweepers*

55 International Way  
Longview, WA 98632  
Phone: 24 HR/Office 888-423-6316  
Fax: 360-423-3409

Web site: [www.pnecorp.com](http://www.pnecorp.com)

**Doug Richter**, [dougr@pnecorp.com](mailto:dougr@pnecorp.com)  
Cell: 360-957-0466

**Portland Office:** 503-247-9466  
**Eugene Office:** 541-607-9177

**CEMEX**

8705 NE 117th Ave.  
Vancouver, WA 98662  
Phone: 360-254-7770  
Fax: 360-253-3794

Web site: [www.cemex.com](http://www.cemex.com)

**Bill Montgomery**, Aggregate Sales Manager,  
[william.montgomery@cemex.com](mailto:william.montgomery@cemex.com)  
Cell: 360-772-2511

**Michael Easley**, Aggregate Account Manager,  
[measley@cemexusa.com](mailto:measley@cemexusa.com)  
Cell: 503-519-9697

**Clyde West, Inc.**

13805 NE Sandy Blvd.  
Portland, OR 97230  
Phone: 800-929-5933  
Fax: 503-252-1769

Web site: [www.volvoc.com/dealers/en-us/clydewest/DealerHome.htm](http://www.volvoc.com/dealers/en-us/clydewest/DealerHome.htm)

**Pat McConnell**, President

**Rick Semke**, Vice President

**Jim McNeal**, Sales Manager,  
[jmcneal@clydewest.com](mailto:jmcneal@clydewest.com), 503-956-2268

**Serving the insurance needs of  
northwest contractors since 1935.**



**A proud representative of the  
NUCA Dividend Insurance Program**

insurance services  
**biggs.**  
est. 1935

**Contact: Cynthia Hilton**  
**Bill Koehler**  
**Jon Courser**

360.695.3301 • 503-285-9700 • [WWW.BIGGSINSURANCE.COM](http://WWW.BIGGSINSURANCE.COM)

*Continued next page*



**Ed Kanable**, Sales, 503-799-3683,  
ekanable@clydewest.com

**Lee Gibby**, Sales, 503-313-7922,  
lgibby@clydewest.com

**Marty Krueger**, Municipal Sales, 503-804-2750,  
mkrueger@clydewest.com

**Jim Fillback**, Sales, jfillback@clydewest.com  
**Nate Gray**, Parts Manager, ngray@clydewest.com

**Bob Mohagen**, Service Manager,  
bmohagen@clydewest.com

Eugene Store  
1550 Irving Rd.  
Eugene, OR 97402  
Phone: 866-920-5933  
Fax: 541-302-3763

**Ron Bocking**, Eugene Sales,  
rbocking@clydewest.com, 541-228-2078

**Greg Derrickson**, Eugene Parts,  
gderrickson@clydewest.com

**Heather Rhodes**, Eugene Parts,  
hrhodes@clydewest.com

See Our Ad Page 17

## Consolidated Supply Co.

7337 SW Kable Lane  
Tigard, OR 97224  
Phone: 503-620-7050  
Fax: 503-968-2920 Waterworks  
**Bruce Hunt**, hunbru@consolidatedsupply.com  
**Scott Narum**, narsco@consolidatedsupply.com

## Construction Equipment Company – CEC

18650 SW Pacific Hwy.  
Tualatin, OR 97062  
Phone: 503-692-9000  
Fax: 503-692-6220  
Web: www.ceccrushers.com  
**Gary Smith**, President, gsmith@ceccrushers.com

## Contech Construction Products, Inc.

11835 NE Glenn Widing Dr.  
Portland, OR 97220  
Phone: 253-514-2149  
Fax: 503-258-3172  
Web site: www.contech-cpi.com  
**Dean Lourens**, lourensd@contech-cpi.com  
**Wayne Peterson**, petersonw@contech-cpi.com

## CSI Geosynthetics

2119 SE Columbia Way, Bldg. 2, Ste. 280  
Vancouver, WA 98661  
Phone: 360-699-1426  
Fax: 360-699-1344  
Web site: www.csigeo.com  
**Kevin Pfeifer**, kevin@csigeo.com

## D.P. Nicoli, Inc.

19600 SW Cipole Rd.  
Tualatin, OR 97062  
Toll Free: 800-695-5006  
Phone: 503-692-6080  
Fax: 503-692-6549  
Web site: www.dpnicoli.com  
**Dawn Morse**, dmorse@dpnicoli.com  
Cell: 503-209-6975  
**Bruce Ellis**, bellis@dpnicoli.com  
Cell: 971-563-0004



Salem, Oregon | (503) 585-7774  
Portland, Oregon | (503) 620-4489  
Escondido, California | (760) 746-1560  
Carlsbad, California | (760) 431-8440  
Anchorage, Alaska | (907) 522-2130

Proudly serving the construction industry since 1973.



CPAs and Business Consultants

www.aktcpa.com



## Emery & Sons Construction, Inc.

General Contractors  
Underground Specialists

Providing  
these services  
for over  
45 years!



- ♦ Sitework
- ♦ Road Construction
- ♦ Structural Concrete
- ♦ Water/Wastewater Treatment Plants
- ♦ Water/Wastewater Pump Stations
- ♦ Agricultural/Vineyard Irrigation Systems
- ♦ Sanitary Sewer Installations
- ♦ Storm Sewer Installations
- ♦ Dry Utility Installations
- ♦ Design Build/CMCG

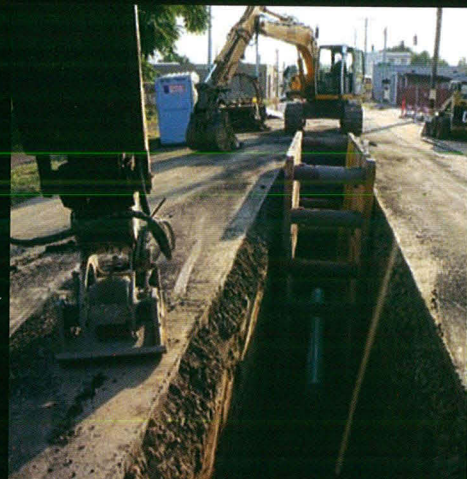
Give us a  
call today!  
**503-588-7576**

Licensed in: OR # 312 WA # 601208238 CA # 920395 NV # 0071718

P.O. Box 4109, Salem, OR 97302 • fax: 503-371-6637 • website: www.emeryandsons.com



QUALITY YOU CAN BUILD ON



# DUKE

## CONSTRUCTION & EXCAVATION, L.L.C.

Commercial / Industrial / Residential

- Dig outs
- Trenching
- Grading
- Specialty trenching for plumbing & electrical
- Value engineering & design
- Sitework
- Utilities
- Subdivisions
- Land Clearing
- Demolition

**(503) 492-0530**

Fax: (503) 492-0760

email: see company profile

17860 SE Foster Rd., Damascus, OR 97089

WWW.DUKECONST.COM

Associates Directory **NUCA**

### DirtLogic, LLC

PO Box 28317  
Portland, OR 97228  
Toll Free: 1-877-77-LOGIC  
Phone: 877-775-6442  
Fax: 503-907-9504  
Web: www.dirtlogic.com

**Matthew L. Gebarowski**, matt@dirtlogic.com

**Aimee Gebarowski**, aimee@dirtlogic.com

### Ditch Witch Northwest

7909 N. Upland Drive  
Portland, OR 97203  
Phone: 503-286-6400  
Fax: 503-286-6111  
Web site: www.ditchwitchnw.com

**Steve Jergentz**, sjergentz@ditchwitchnw.com

### Feenaughty Machinery Co.

4800 NE Columbia Blvd.  
Portland, OR 97218  
P.O. Box 13279  
Portland, OR 97213  
Phone: 503-282-2566  
Fax: 503-282-1755  
Web site: www.feenaughty.com

**Randy Harris**, President, randyh@feenaughty.com

**Byron Rose**, bvr@pacifier.com

**Bobby Meyer**, strkdog@aol.com

### Ferguson Waterworks

9129 N. Tyndall  
Portland, OR 97217  
Phone: 503-240-6747  
Toll Free: 800-283-8803  
Fax: 503-240-6751  
Web site: www.ferguson.com

**Dan Warner**, President/General Manager, daniel.warner@ferguson.com

Cell: 503-250-1713

**Pat Casey**, Sales Manager

Cell: 503-504-0394

**Darryl Case**, West Coast Waterworks District Manager, darryl.case@ferguson.com

Cell: 858-342-3838

### First Cascade Corp.

P.O. Box 2158  
Lake Oswego, OR 97035  
Phone: 503-699-8970  
Fax: 503-699-8985  
Web site: www.firstcascade.com

**Scott Conway**, scottc@firstcascade.com

### G.E.W. LLC - Solutions In Safety

P.O. Box 2485  
Battleground, WA 98604  
Phone/Fax: 360-687-5984  
Web site: www.gew-llc.com

**Brian Clarke**, brianclarke@gew-llc.com

Cell: 360-601-4365

### Geotk, LLC

2313 E. 2nd St.  
Vancouver, WA 98661  
Phone: 360-750-1955  
Toll Free: 888-708-8835  
Fax: 360-750-1974  
Web site: www.geotk.com

**Tammy Eastman**, tammy@geotk.com

**Kevin O'Neill**, kevin@geotk.com

### Godwin Pumps of America, Inc. (See Xylem Dewatering Solutions, Inc.)



## Armadillo Underground, Inc.

Serving the Northwest for over 25 years

NUCA Member



Auger Boring - Directional Drilling - Rock Drilling - Pipe Ramming - Vacuum Excavation



Phone: (503) 588-8050 • Fax: (503) 362-1008

3840 Boone Rd. SE Salem, OR 97317 • P.O. Box 12219 SE Salem, OR 97301

www.armadillounderground.com • email: timo@armadillounderground.com



**Hanson Pipe & Precast**

755 NE Columbia Blvd.  
Portland, OR 97211  
Phone: 503-285-8391  
Fax: 503-286-0603

Web site: [www.hansonpipeandprecast.com](http://www.hansonpipeandprecast.com)

**Peder Gunderson**, [peder.gunderson@hanson.com](mailto:peder.gunderson@hanson.com)

**Lon Tweed**, [lon.tweed@hanson.com](mailto:lon.tweed@hanson.com)

**Koby Rogers**, [koby.rogers@hanson.biz](mailto:koby.rogers@hanson.biz)

P.O. Box 363

Tualatin, OR 97062

Phone: 503-692-3885

Fax: 503-692-3173

Web site: [www.hansonpipeandprecast.com](http://www.hansonpipeandprecast.com)

See Our Ad Page 18

**HD Fowler Company**

28800 SW Boberg Road  
Wilsonville, OR 97070

Phone: 503-783-3490

Fax: 503-783-3497

Web site: [www.hdfowler.com](http://www.hdfowler.com)

**Mike Dietzman**, [miked@hdfowler.com](mailto:miked@hdfowler.com)

**Shon Fournier**

**Kevin Cedergreen**

**Hobas Pipe USA**

1241 Laysan Teal Dr.

Roseville, CA 95747

Phone: 916-257-3572

Fax: 916-788-2080

Web site: [www.hobaspipe.com](http://www.hobaspipe.com)

**Michael A. Garcia**, Area Manager,

[mgarcia@hobaspipe.com](mailto:mgarcia@hobaspipe.com)

**Holm Brothers Construction, Inc.**

686 Bratton Rd.

Goldendale, WA 98620

Phone: 503-252-2291

Fax: 503-419-4368

Email: [holmbros@yahoo.com](mailto:holmbros@yahoo.com)

**Dale Holm**

**Larry Holm**

**Honey Bucket**

P.O. Box 12923

Salem, OR 97309

Phone: 800-966-2371

Fax: 503-581-7223

Web site: [www.honeybucket.com](http://www.honeybucket.com)

**Jason Perry**, Site Coach

**David Litherland**, Key Accounts, [david@nwcascade.com](mailto:david@nwcascade.com)

**HPS Pipe & Supply, Inc.**

P.O. Box 890

Cornelius, OR 97113

Phone: 503-357-4217

Fax: 503-357-3903

Email: [jimr@hpspipe.com](mailto:jimr@hpspipe.com)

**The Iron Horse Group**

P.O. Box 30569

Portland, OR 97294

Phone: 503-943-3400

Fax: 503-943-3389

Web site: [www.theironhorsegroup.com](http://www.theironhorsegroup.com)

**Lonn Sweers**, [lonn.sweers@theironhorsegroup.com](mailto:lonn.sweers@theironhorsegroup.com)

Cell: 503-849-9644

See Our Ad Pages 24 and 26

When a project goes wrong,  
having an expert on your side can make  
choosing a direction so much easier.



Construction projects don't always go as planned. Whether you're an architect, engineer, or a subcontractor, we may be able to help. At Stewart Sokol & Gray, we pride ourselves on knowing the construction industry better than anyone in the legal field. With over 150 years of combined experience, our team of construction litigation experts is prepared to help you maneuver whatever complications arise on a project.

Working with an emphasis in construction and design law, commercial litigation, business and corporate law, surety and fidelity law, bankruptcy, and insurance coverage and defense, Stewart Sokol & Gray maintains a local, regional and international presence. Let us show you the difference having an expert on your side can make.

*Principle. Purpose. Passion.*

**STEWART SOKOL & GRAY LLC**

ATTORNEYS AT LAW

503.221.0699

[WWW.LAW5SG.COM](http://WWW.LAW5SG.COM)



**OREGON TRACTOR**

Construction & Materials Handling Equipment

Rental ♦ Sales ♦ Parts ♦ Service

Excavators, Wheel Loaders, Dozers,  
Dump Trucks, Graders, Universal  
Processors, Excavator-Mounted  
Hydraulic Jaw Crushers and More!

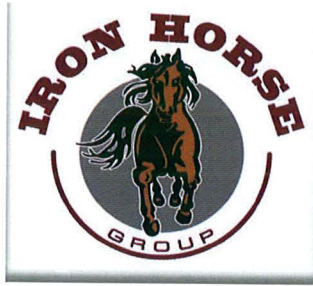


6455 NE Columbia Boulevard  
Portland, OR 97218  
(503) 282-7211 • Fax (503) 281-2596

4373 Highway 99 South  
Roseburg, OR 97471  
(541) 679-6211 • Fax (541) 679-9722

Toll Free: 800-338-5495  
[www.oregontractor.com](http://www.oregontractor.com)





**503-943-3400**

**www.theironhorsegroup.com**  
**OR CCB #28397**



**Vacuum Service**

- ☐ Manholes ☐ Catchbasins ☐ Storm & Sewer Lines • Hydro Excavating
- Hazwoper Certified



**Video Services**

- ☐ Mainline Pan & Tilt • Self Propelled Lateral Launch Camera • Pipe Locating
- Pipe Grade Check Photos



**Trenchless Pipe Repair**

- ☐ Licensed Dealer for LMK • Vac-a-Tee Technology • Mainline Spot Repair
- Trenchless Lateral Rehabilitation CIPP



**Manhole Repair**

- Chemical Resistant • Moisture Tolerant ☐ Slip Resistant ☐ "Green"
- 100% Solids ☐ Cold Temperature
- ☐ Long Wearing

**NUCA MEMBER DISCOUNTS AVAILABLE**

**Iron Planet**

4813 Parkview Dr.  
Lake Oswego, OR 97035  
Phone: 503-209-0022  
Fax: 503-660-3360  
Web site: [www.ironplanet.com](http://www.ironplanet.com)  
**Travis Duncan**, [tduncan@ironplanet.com](mailto:tduncan@ironplanet.com)

**J. Davidson & Sons**

P.O. Box 1018  
Oakridge, OR 97463  
Phone: 541-782-4122  
Fax: 541-782-4526  
**Jerry Davidson**  
**Roy Davidson**  
**David Davidson**  
Email: [tech-davidson@qwestoffice.net](mailto:tech-davidson@qwestoffice.net)

**KG Specialties**

17084 NE Sandy Blvd.  
Portland, OR 97230  
Phone: 503-669-8233  
Fax: 503-669-4908  
Web site: [www.kgspecialties.com](http://www.kgspecialties.com)  
**Geoff Brown**, [geoff@kgspecialties.com](mailto:geoff@kgspecialties.com)

**Knife River-Western Oregon Division**

12222 NW Marina Way  
Portland, OR 97231  
Phone: 503-944-3500  
Fax: 503-944-3599  
Web site: [www.kniferiver.com](http://www.kniferiver.com)  
**Chris Giles**, [chris.giles@kniferiver.com](mailto:chris.giles@kniferiver.com)  
Cell: 503-805-5820  
**Billy Stimpson**, [billy.stimpson@kniferiver.com](mailto:billy.stimpson@kniferiver.com)  
Cell: 503-805-1270  
See Our Ad Page 26

**Kuker-Ranken, Inc.**

5400 NE Columbia Blvd. Suite A  
Portland, OR 97218  
Phone: 503-641-3388  
Fax: 503-964-5535  
Web site: [www.krinc.net](http://www.krinc.net)  
**Bob Lycke**, [blycke@krinc.net](mailto:blycke@krinc.net)  
**Tom Bergen**, [tbergen@krinc.net](mailto:tbergen@krinc.net)

**Les Schwab Tire Centers**

2140 NE Columbia Blvd.  
Portland, OR 97211  
Phone: 503-289-4559  
Fax: 503-735-9885  
Web site: [www.lesschwab.com](http://www.lesschwab.com)  
**Greg Pierce**, *Fleet Tire Systems*,  
[greg.L.pierce@lesschwab.com](mailto:greg.L.pierce@lesschwab.com)  
Cell: 503-860-7566  
**Rick Edwards**, *Fleet Tire Systems*,  
[rick.d.edwards@lesschwab.com](mailto:rick.d.edwards@lesschwab.com)  
Cell: 503-580-3914

**McCallum Rock Drilling, Inc.**

P.O. Box 599  
Chehalis, WA 98532  
Phone: 360-748-7259  
Fax: 360-748-8823  
Web site: [www.mccallumrockdrilling.com](http://www.mccallumrockdrilling.com)  
**Rich McCallum**, [richm@mccallumrockdrilling.com](mailto:richm@mccallumrockdrilling.com)  
**Ramon Coronel**  
See Our Ad Page 14

**Modern Machinery**

5241 NE 82nd Ave.  
Portland, OR 97220  
Phone: 503-255-7841  
Fax: 503-255-1553  
Web site: [www.modernmachinery.com](http://www.modernmachinery.com)  
**Phil Berard**, [pberard@modernmachinery.com](mailto:pberard@modernmachinery.com)

**Ness & Campbell Crane**

8001 NE 14th Place  
Portland, OR 97211  
Phone: 503-283-3111  
Fax: 503-283-3115  
Email: [sales@campbellcrane.com](mailto:sales@campbellcrane.com)  
Web site: [www.campbellcrane.com](http://www.campbellcrane.com)  
**Tony Steelman**, *President*  
**Dan Pollard**, *Vice President*  
**Mike Teeter**, *Vice President*  
**Rick Moultrie**, *Vice President*  
See Our Ad Page 4

**Next Step Business Coaching**

P.O. Box 12986  
Salem, OR 97309  
Phone: 503-949-9670  
Fax: 503-391-0780  
Web site: [www.nextstep-bc.com](http://www.nextstep-bc.com)  
**Lyle Schellenberg**, [lyle@nextstep-bc.com](mailto:lyle@nextstep-bc.com)

**Northwest Pipe Company**

5721 SE Columbia Way, Suite 200  
Vancouver, WA 98661  
Phone: 360-397-6250  
Fax: 360-397-6257  
Web site: [www.nwpipe.com](http://www.nwpipe.com)  
**Jeffrey S. Curl**, *Sales Representative*,  
[jcurl@nwpipe.com](mailto:jcurl@nwpipe.com)  
Cell: 503-939-8700  
Direct: 503-382-3434

**Oldcastle Precast**

P.O. Box 323  
Wilsonville, OR 97070-0323  
Phone: 503-682-2844  
Fax: 503-682-2657  
Web site: [www.oldcastleprecast.com/wilsonville](http://www.oldcastleprecast.com/wilsonville)  
**Vern Boomer**, [vern.boomer@oldcastle.com](mailto:vern.boomer@oldcastle.com)

**Oregon Tractor**

6455 NE Columbia Blvd.  
Portland, OR 97218-2960  
Phone: 503-282-7211  
Fax: 503-281-2596  
Web site: [www.oregontractor.com](http://www.oregontractor.com)  
**Dave Simonson**  
**Jim Dukart**, [jdukart@oregontractor.com](mailto:jdukart@oregontractor.com)  
Roseburg Office  
Phone: 541-679-6211  
Fax: 541-679-9722  
**Rick Smith**, [rsmith@oregontractor.com](mailto:rsmith@oregontractor.com)  
See Our Ad Page 23

**Pape' Machinery, Inc.**

1425 NE Columbia Blvd.  
Portland, OR 97211  
Toll Free: 800-452-5346  
Phone: 503-289-1103  
Fax: 503-283-4549  
Web site: [www.papemachinery.com](http://www.papemachinery.com)  
**Scot Boatright**, *General Manager*,  
[sboatright@papemachinery.com](mailto:sboatright@papemachinery.com)

*Continued next page*



**Tim Ellis, Sales/Territory Manager,**  
tellis@papemachinery.com

**Dale Branch, Sales/Territory Manager,**  
dbranch@papemachinery.com

**Eric Johnson, Sales/Territory Manager,**  
ejohnson@papemachinery.com

**Russ Paradis, Rental Manager,**  
rparadis@papemachinery.com

### Pape Rents

7909 N Upland Drive

Portland, OR 97203

Phone: 503-278-3530

Fax: 503-286-6111

Web site: www.paperents.com

### Steve Jergentz

**Brett Hawkins,** bhawkins@paperents.com,

Cell: 360-606-0086

### Peterson Cat

4421 NE Columbia Blvd.

Portland, OR 97218

Phone: 503-288-6411

Fax: 503-280-1842

Web site: www.petersoncat.com

**Kevin Culligan, General Manager ORIWA Branch**

Operations, kmculligan@petersoncat.com

Cell: 541-231-9541

**Chris Harbeson, General Manager Product Support,**

ceharbeson@petersoncat.com

503-280-1536

Albany Office

30815 Highway 34 SW

Albany, OR 97321

Phone: 541-791-9133

Fax: 541-791-9140

**Bob Stucky,** rstucky@petersoncat.com

Eugene Office

2300 Henderson Ave.

Eugene, OR 97403

Phone: 541-302-9199

Fax: 541-302-9599

**Bill Bean,** webean@petersoncat.com

Klamath Falls Office

1434 S. 6th St.

Klamath Falls, OR 97601

Phone: 541-850-8658

Fax: 541-850-2121

**Tim Murphy,** tbmurphy@petersoncat.com

Longview Office

1205 Baltimore St.

Longview, WA 98632

Phone: 360-423-5760

Fax: 360-423-5292

**Gary Spence,** grspence@petersoncat.com

Medford Office

2600 Biddle Road

Medford, OR 97504

Phone: 541-282-8551

Fax: 541-282-7914

**Tim Murphy,** tbmurphy@petersoncat.com

North Bend Office

1570 Maple St.

North Bend, OR 97459

Phone: 541-756-8708

Fax: 541-756-2364

**Shannon Hunt,** sphunt@petersoncat.com



**WWW.EXTREMEEX.COM**

**TRENCHING, DIRECTIONAL BORING,  
VAULT SETTING, TRAFFIC SIGNALS**



**We are a PGE Certified Union Contractor | 503-722-8088**



**ANCHOR**

**INSURANCE & SURETY, INC.**

**Proud to serve NUCA members in 2012**



**WE CAN  
HOOK  
YOU UP!**

Portland (503) 224-2500

[www.anchorias.com](http://www.anchorias.com)

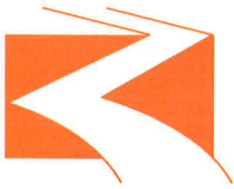
Eugene (541) 342-4400

1201 SW 12th Ave, Suite 500, Portland, Or. 97205

450 Country Club Rd, Suite 100, Eugene, Or. 97401

Continued next page





# KNIFE RIVER

AN MDU RESOURCES COMPANY

# CHOOSE KNIFE RIVER FOR YOUR AGGREGATE ASPHALT & READY -MIX NEEDS

For more information about MDU Resources Group see [www.mdu.com](http://www.mdu.com)

Knife River  
Portland Metro Division  
12222 NW Marina Way  
Portland, OR 97231  
503.944.3500

Redmond Office  
3635 SW Airport Way  
Redmond, OR 97756  
Phone: 541-548-8566  
Fax: 541-548-8591  
**Bill Bean**, [webean@petersoncat.com](mailto:webean@petersoncat.com)

Salem Office  
3850 Turner Rd. SE  
Salem, OR 97302  
Phone: 503-364-0602  
Fax: 503-364-9527

**Paul Grove**, [pagrove@petersoncat.com](mailto:pagrove@petersoncat.com)

The Dalles Office  
1238 W. 2nd St.  
The Dalles, OR 97058  
Phone: 541-296-4642  
Fax: 541-296-1733  
**Gary Spence**, [grspence@petersoncat.com](mailto:grspence@petersoncat.com)  
See Our Ad Page 2

### Phil Martinson Engineering, Inc.

P.O. Box 544  
Marylhurst, OR 97036  
Phone: 503-557-1555  
Fax: 503-210-0360  
Web site: [www.pmeng.com](http://www.pmeng.com)  
**Phil Martinson**, [phil@pmeng.com](mailto:phil@pmeng.com)

Associates Directory

# NUCA

### PNE Construction (A Division of PNE Corp.)

1081 Columbia Blvd.  
Longview, WA 98632  
Phone: 888-533-2867  
Fax: 360-423-2272  
Web site: [www.pnecorp.com](http://www.pnecorp.com)  
**Mark Schlittler**, [marks@pnecorp.com](mailto:marks@pnecorp.com)  
**Doug Richter**, [dougr@pnecorp.com](mailto:dougr@pnecorp.com)  
See Our Ad Page 30

### Porter W. Yett Company

5949 NE Cully Blvd.  
Portland, OR 97218  
Phone: 503-282-3251  
Fax: 503-282-3253  
Email: [info@porteryett.com](mailto:info@porteryett.com)  
Web site: [www.porteryett.com](http://www.porteryett.com)

#### Steven Yett

**Dave Garrison**, Construction Division Manager  
*Soil Treatment & Stabilization: Cement/Lime/  
Bentonite*

*Full Depth Reclamation  
Pulverization & Coldplaning*

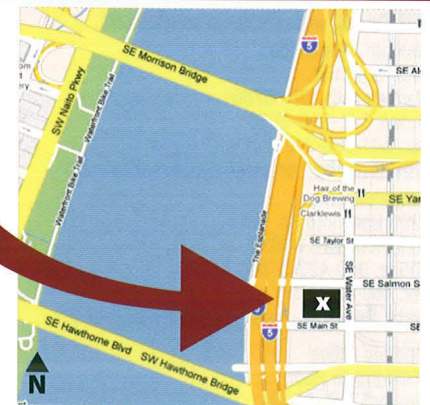
**Flindt Windom**, Materials Division Manager  
*Hot & Cold Mix Asphalt  
Aggregate Products  
Concrete & Asphalt Recycling*

## Iron Horse Recycling Yard

503-943-3400 [www.theironhorsegroup.com](http://www.theironhorsegroup.com)

**1221 SE Water Ave**  
**Open 8:00am - 4:30pm**  
**or by appointment**

- Conveniently located in downtown Portland.
- Dump site for clean dirt, asphalt & concrete.
- Recycled blended concrete/asphalt material for sale at competitive pricing.
- Recycled materials meet COP/ODOT/PDOT specifications.
- Dump truck, conveyor truck and sweeper truck services available.



## Iron Horse Mobile Crushing

*"We are your crushing & recycling solution"*

**MOBILE CRUSHING** with track mounted equipment

- Pioneer 4250 horizontal impact crusher
- Stacking conveyor 36" x 60'

**CALL  
FOR PRICING  
503-943-3400**



## The PPI Group

6015 NE 80th Ave.  
Portland, OR 97218  
Phone: 503-231-1576, 800-247-1927  
Fax: 503-231-4012  
Web site: [www.thePPIgroup.com](http://www.thePPIgroup.com)

**Tigue Howe**, *President & General Manager*  
**Jeff Peterson**, *Senior Vice President*,  
[jeffp@theppigroup.com](mailto:jeffp@theppigroup.com)

## R.S. Davis Recycling, Inc.

10105 SE Mather Rd.  
Clackamas, OR 97015  
Phone: 503-657-5593  
Fax: 503-657-6131  
Web site: [www.portlandrecycling.com](http://www.portlandrecycling.com)

**Hank Doane**, [hank@portlandrecycling.com](mailto:hank@portlandrecycling.com)

## Rain for Rent

11035 NE Marx St.  
Portland, OR 97220  
Phone: 503-262-7246  
Fax: 503-262-1299  
Web site: [www.rainforrent.com](http://www.rainforrent.com)

**Miles Strampe**, *Sales Representative, Senior*,  
[mstrampe@rainforrent.com](mailto:mstrampe@rainforrent.com)

**Don Ehly**, *Sales Representative, Industrial*,  
[dehly@rainforrent.com](mailto:dehly@rainforrent.com)

## Ritchie Bros. Auctioneers

13232 Case Rd. SW  
Olympia, WA 98512  
Phone: 360-956-1500  
Fax: 360-956-1508  
Web site: [www.rbauktion.com](http://www.rbauktion.com)  
**Wayne Settle**, [wsettle@rbauktion.com](mailto:wsettle@rbauktion.com)

## Sawcutters NW

P.O. Box 481  
Boring, OR 97009  
Phone: 503-668-7274  
Fax: 503-668-0023  
Web site: [www.sawcuttersnw.com](http://www.sawcuttersnw.com)

## Debbie Cooper

Cell: 503-703-5368

## Kasey Cooper

Cell: 503-705-8499  
Email: [sawcuttersnw@aol.com](mailto:sawcuttersnw@aol.com)  
Alternate Email: [jessnikk@aol.com](mailto:jessnikk@aol.com)

## Site One Conveyor Trucks

P.O. Box 10618  
Portland, OR 97296  
Phone: 503-296-1055  
Fax: 503-296-5722  
Web site: [www.siteoneconveyors.com](http://www.siteoneconveyors.com)  
**Jenna Mae**, [jenna@siteoneconveyors.com](mailto:jenna@siteoneconveyors.com)

## Sprint Nextel Communications

8405 SW Nimbus Ave. #B  
Beaverton, OR 97008  
Phone: 503-957-1722  
Web site: [www.sprint.com](http://www.sprint.com)  
**Elisabeth Costa**, [elisabeth.d.costa@sprint.com](mailto:elisabeth.d.costa@sprint.com)

## Star Rentals

1735 SE MLK Jr. Blvd.  
Portland, OR 97214  
Phone: 503-231-7300  
Fax: 503-231-1155  
Web site: [www.starrentals.com](http://www.starrentals.com)  
**Ryan Adamo**, [ryana@starrrentals.com](mailto:ryana@starrrentals.com)  
**Bryon Rush**

FLUSHING UNITS • HOLDING TANKS • VIP UNITS

LOCALLY OWNED AND OPERATED

CERTIFIED DRIVERS • DOCUMENTED SERVICE



CALL TODAY FOR NUCA  
MEMBER DISCOUNTS!

**"SIMPLY THE BEST"**

**FREE PICKUP & DELIVERY**  
**FREE HAND SANITIZER**  
**FREE SEAT COVERS**

- **Guaranteed Service for Construction Sites & Special Events**
- **Fast, Clean, Reliable – 24 Hours A Day**
- **SAME DAY DELIVERY**

- **DAMAGE WAIVERS AVAILABLE - BEST FLEXIBLE PRICING**

Portable Restrooms • Portable Sinks • Restroom Trailers • Holding Tanks • Security Containers

**503-252-0550 Or 360-253-5225**

**[www.americansanican.com](http://www.americansanican.com)**

HANDWASH SINKS • HIGH RISE SANITATION

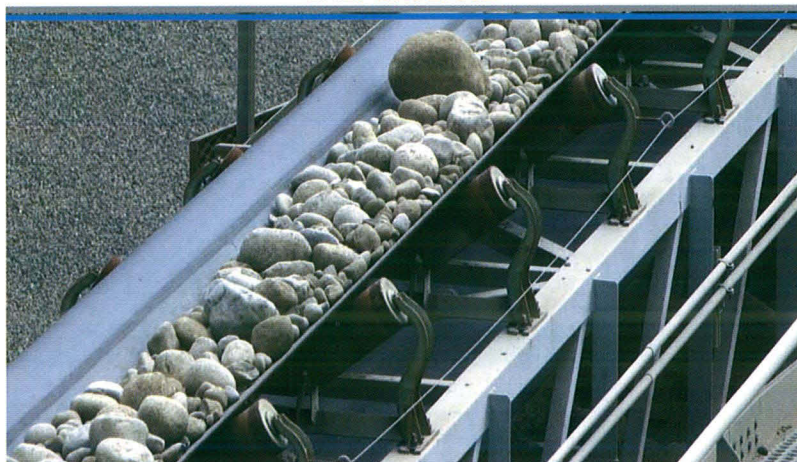


HI-TECH UNITS • HAND SANITIZERS • TRAILERS

ASSOCIATES DIRECTORY



**CALPORTLAND®**



## Aggregate Operations in Oregon and Southwest Washington

Crushed Base Rock,

Mason Sand, Coarse Sand, Fill Sand and Fill Materials

Specialty Blends on Request

Blue Lake Aggregate Yard 503.665.1495 Portland, OR  
Front Avenue Aggregate Yard 503.243.5535 Portland, OR  
Santosh Aggregate Plant 503.543.7116 Scappoose, OR  
Port of Vancouver Aggregate Yard 360.694.1627 Vancouver, WA





**Sunbelt Rentals Pump & Power Services**

7610 NE Killingsworth St.  
Portland, OR 97218  
Phone: 503-256-0091  
Fax: 503-256-9247  
Email: pcm576@sunbeltrentals.com  
Web site: www.sunbeltrentals.com  
**Donald Cochran**

**Taylor Transport, Inc.**

2631 Scott Ave.  
Vancouver, WA 98660  
Phone: 360-573-5600  
Fax: 360-573-7469  
Email: TayTransport@aol.com  
**Mike Leboki**  
**Mary-Ann Leboki**

**TBH & Associates, LLC**

"We Improve the Earth"  
5211 NE 88th St.  
Vancouver, WA 98665  
Phone: 360-546-1600  
Fax: 360-546-1700  
Web site: www.tbhdrill.com  
**Peter Tapio**, peter.tapio@tbhdrill.com

**Triad Machinery**

*Triad Machinery Inc. continues to serve our northwest customers, offering Sales, Rentals, Parts and Service to fulfill all your equipment needs. Triad partners with your company to "Create Successful Futures".*

4530 NE 148th  
Portland, OR 97230  
Phone: 503-254-5100  
Fax: 503-254-8578  
Web site: www.triadmachinery.com  
**Edd Taylor**, Operations Manager  
**Chad Kline**, Portland Branch Manager,  
ckline@triadmachinery.com  
See Our Ad Page 7

**United Pipe & Supply**

*United Pipe & Supply is a family owned North-west wholesale distributor providing products and services to the underground utility contractor, including pipeline testing and tapping.*

7600 SE Johnson Creek Blvd.  
Portland, OR 97206  
Phone: 503-788-8813, 503-772-6031  
Fax: 503-777-5066  
Email: tdodson@unitedpipe.com  
Web site: www.unitedpipe.com

**United Rentals Trench Safety**

9050 NE Halsey  
Portland, OR 97220  
Phone: 503-255-3449  
Fax: 503-251-0563  
Web site: www.unitedrentals.com/trench  
**Jim Craig**, OR-SW WA Manager, jcraig@ur.com  
Phone: 503-255-3449  
**Dean Adams**, Counter, deadams@ur.com  
**John Sheaffer**, Sales, jsheaffe@ur.com  
Cell: 360-951-3409  
**Dave Callister**, Sales, dcallist@ur.com  
Cell: 503-708-6479

Salem Office  
Phone: 503-566-7533

Eugene-Southern Oregon Office  
Phone: 541-391-0110  
See Our Ad Page 32

**Vancouver Oil Company, Inc.**

P.O. Box 528  
Vancouver, WA 98666  
Phone: 360-574-5440  
Toll Free: 800-221-7067  
Fax: 360-574-9070  
Web site: www.vancouveroil.com  
**Dale E. Wayrynen**, dalew@vancouveroil.com  
**Todd Shaw**, todds@vancouveroil.com

**Vancouver Paving Co. (WBE/DBE)**

406 NE 139th St.  
Vancouver, WA 98685  
Phone: 360-573-7973  
Fax: 360-574-1609  
Web site: www.vancouverpavingco.com  
**Ginger Edwards**, President/Owner,  
gedwards@vancouverpavingco.com  
**Jim Moyer**, General Manager  
**Gregg Walker**, Estimator

**Vermeer Pacific**

7640 NE 33rd Dr.  
Portland, OR 97211  
Phone: 503-282-0694  
Toll Free: 800-869-3989  
Fax: 503-281-8601  
Email: portland.or@vermeerdrr.com  
Web site: www.vermeerpacific.com  
**Nick Frappier**, nfrappier@rdoequipment.com

**Xylem Dewatering Solutions, Inc.**  
(Formerly known as Godwin Pumps of America)

*"Xylem Dewatering Solutions, Inc. offers the most complete range of pumps available anywhere for immediate rental or sale. The best pumps and the best people - that's our commitment to you."*

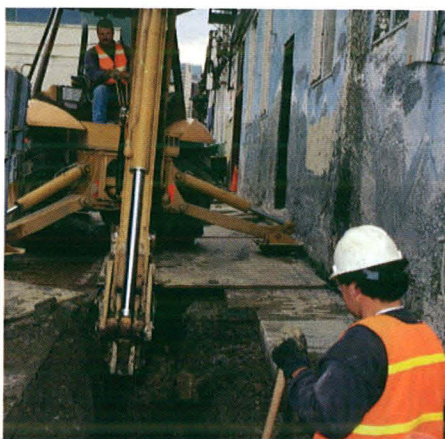
2754 Pacific Hwy.  
Hubbard, OR 97032  
Phone: 503-981-0341  
Fax: 503-981-1428  
Web site: www.godwinpumps.com  
**Glen McCord**, glen.mccord@xylemnc.com  
Cell: 503-572-3912

**Don't dig yourself into a hole...**

If you're a contractor, you're looking for an insurance advisor who will help you secure the proper and adequate coverage that will safeguard your business. Your independent agent can offer you expert advice that will give you peace-of-mind when it comes to choosing insurance coverage and let you go back to doing your job.



For your property and casualty needs...representing affiliated companies of Liberty Northwest®



**ASSURETY**  
NORTHWEST

COMMERCIAL • BONDING • PERSONAL • LIFE • HEALTH

Insurance & Bonding

www.assuretynw.com

Janelle Markovich, CIC, 503.205.8111 ♦ Janelle.Markovich@assuretynw.com  
8931 SE Foster Rd., Suite 200 Portland, OR 97266 ♦ 800-769-7726

Over 30 years in business.

Policies are underwritten by the member companies of Liberty Mutual Group. Not all coverages available in all states. Logos owned by Liberty Northwest Insurance Company. ©2008 The Liberty Northwest Insurance Company.





**AGC - Oregon-Columbia Chapter**

9450 SW Commerce Circle, Suite 200  
 Wilsonville, OR 97070  
 Phone: 503-682-3363  
 Fax: 503-682-1696  
 Web site: [www.agc-oregon.org](http://www.agc-oregon.org)  
**Chris Miller**, [chrism@agc-oregon.org](mailto:chrism@agc-oregon.org)  
 Cell: 503-704-7636

**A.G. Sadowski Company**

1605 Liberty St. SE  
 Salem, OR 97302  
 Phone: 503-362-2711  
 Fax: 503-362-2837  
**A.G. (Andy) Sadowski**  
**Kathleen (Chick) Sadowski**, [derek@agsadowski.com](mailto:derek@agsadowski.com)  
**Derek Sadowski**, [derek@agsadowski.com](mailto:derek@agsadowski.com)  
**Ty Moffett**

**AKT, LLP**

5665 SW Meadows Rd. #200  
 Lake Oswego, OR 97035  
 Phone: 503-620-4489  
 Fax: 503-624-0817  
 Web site: [www.aktcpa.com](http://www.aktcpa.com)  
**Jim Dailey**, [jdailey@aktcpa.com](mailto:jdailey@aktcpa.com)  
**Joe Schneid**, [jschneid@aktcpa.com](mailto:jschneid@aktcpa.com)  
**Matt Van Doren**, [mvandoren@aktcpa.com](mailto:mvandoren@aktcpa.com)  
**Mike Sause**, [msause@aktcpa.com](mailto:msause@aktcpa.com)  
**Seneca Steber**, [ssteber@aktcpa.com](mailto:ssteber@aktcpa.com)  
**Darin Richards**, [drichards@wealthadvisors.com](mailto:drichards@wealthadvisors.com)  
 Offices in Portland, Salem, San Diego and Anchorage  
 See Our Ad Page 21

**Anchor Insurance & Surety, Inc.**

500 Century Tower  
 1201 SW 12th Ave.  
 Portland, OR 97205  
 Phone: 503-224-2500  
 Toll Free: 800-892-8967  
 Fax: 503-224-9830  
**Pat Dooney**, [pdooney@anchorias.com](mailto:pdooney@anchorias.com)  
**Brent Olson**, [bolson@anchorias.com](mailto:bolson@anchorias.com)  
**Rick Kowalski**, [rkowalski@anchorias.com](mailto:rkowalski@anchorias.com)  
**Joel Dietzman**, [jdietzman@anchorias.com](mailto:jdietzman@anchorias.com)  
 See Our Ad Page 25

**Assurety Northwest Insurance Agency**

8931 SE Foster, Suite 200  
 Portland, OR 97266  
 Phone: 503-777-3700  
 Toll Free: 800-769-7726  
 Fax: 503-205-8171  
 Web site: [www.assuretynw.com](http://www.assuretynw.com)  
**John Ludwick**  
 Phone: 503-205-8110  
**Janelle Markovich**, [janelle.markovich@assuretynw.com](mailto:janelle.markovich@assuretynw.com)  
 Phone: 503-205-8111  
 See Our Ad Page 28

**Bank of the West**

*Bank of the West ([www.bankofthewest.com](http://www.bankofthewest.com)) offers a full range of business, corporate, equipment finance, personal, trust and international banking services through banking locations in 19 Western and Midwestern states.*

7925 SW Nyberg Rd.  
 Tualatin, OR 97062  
 Phone: 503-691-1699  
 Fax: 503-691-1578  
 Web site: [www.bankofthewest.com](http://www.bankofthewest.com)  
**Kimberly Wheeler**, [Kimberly.wheeler@bankofthewest.com](mailto:Kimberly.wheeler@bankofthewest.com)  
 Phone: 503-713-7097  
**David Maslyk**, [David.maslyk@bankofthewest.com](mailto:David.maslyk@bankofthewest.com)  
 Phone: 503-294-6366

**Beecher Carlson Insurance Agency, LLC**

220 NW Second Ave., Suite 800  
 Portland, OR 97209  
 Phone: 503-222-1831  
 Fax: 503-274-0323  
 Web site: [www.beechercarlson.com](http://www.beechercarlson.com)  
**Craig Payne**, [craig.payne@beechercarlson.com](mailto:craig.payne@beechercarlson.com)  
 Phone: 503-219-3267  
**John Stott**, [john.stott@beechercarlson.com](mailto:john.stott@beechercarlson.com)  
 Phone: 503-219-3243  
**Jeff Broyles**, [jeff.broyles@beechercarlson.com](mailto:jeff.broyles@beechercarlson.com)  
 Phone: 503-219-3202  
 Eugene Office  
 59 E. 11th Ave.  
 Eugene, OR 97401  
 Phone: 541-485-6633  
 Fax: 541-485-3946  
**Dan De Grange**, [Dan.DeGrange@beechercarlson.com](mailto:Dan.DeGrange@beechercarlson.com)  
 Medford Office  
 707 Murphy Rd.  
 Medford, OR 97504  
 Phone: 541-772-1111  
 Fax: 541-772-3785  
**Barb Pinkham**, [barbara.pinkham@beechercarlson.com](mailto:barbara.pinkham@beechercarlson.com)  
 Bend Office  
 296 SW Columbia St., Suite D.  
 Bend, OR 97702  
 Phone: 541-382-1611  
 Fax: 541-382-7477  
**Julie Hammond**, [Julie.Hammond@beechercarlson.com](mailto:Julie.Hammond@beechercarlson.com)  
 Phone: 541-749-4958  
**Gary Githens**, [Gary.Githens@beechercarlson.com](mailto:Gary.Githens@beechercarlson.com)  
 Phone: 541-749-4954  
 Longview, WA Office  
 1700 Hudson St. Suite 204  
 Longview, WA 98632  
 Phone: 360-703-0101  
**Trinity Collins**, [trinity.collins@beechercarlson.com](mailto:trinity.collins@beechercarlson.com)  
 Phone: 360-353-9301  
**Jeff Broyles**, [jeff.broyles@beechercarlson.com](mailto:jeff.broyles@beechercarlson.com)  
 Phone: 360-353-9305

**Biggs Insurance Services**

Portland, Vancouver, Longview  
 916 Main St.  
 P.O. Box 189  
 Vancouver, WA 98666-0189  
 Phone: 503-285-9700; 360-695-3301  
 Fax: 360-828-3801  
 Web site: [www.biggsinsurance.com](http://www.biggsinsurance.com)  
**Cynthia Hilton**, [Cynthia.Hilton@biggsinsurance.com](mailto:Cynthia.Hilton@biggsinsurance.com)  
 Phone: 360-828-3780, direct  
**Bill Koehler**, [bill.koehler@biggsinsurance.com](mailto:bill.koehler@biggsinsurance.com)  
 Phone: 360-828-3722, direct  
**Jon Courser**, [jon.courser@biggsinsurance.com](mailto:jon.courser@biggsinsurance.com)  
 Phone: 360-828-3720, direct  
 See Our Ad Page 20

**Bituminous Insurance**

1200 Valley West Drive  
 West Des Moines, IA 50265  
 Phone: 800-383-1122  
 Fax: 515-223-4315  
 Web site: [www.bituminousinsurance.com](http://www.bituminousinsurance.com)  
**Steve Agey**, Branch Manager, [sagey@bituminousinsurance.com](mailto:sagey@bituminousinsurance.com)

**Bradach Law Offices**

Portland Union Station  
 800 NW 6th Ave. Suite 209  
 Portland, OR 97209-3783  
 Phone: 503-238-7170  
 Fax: 503-238-7127  
 Web site: [www.bradachlaw.com](http://www.bradachlaw.com)  
**John F. Bradach, Sr.**, [jbradach@bradachlaw.com](mailto:jbradach@bradachlaw.com)  
 Cell: 503-329-7627

**Daily Journal of Commerce**

921 SW Washington St. Suite 210  
 Portland, OR 97205  
 Phone: 503-226-1311  
 Fax: 503-802-7219  
 Web site: [www.djcoregon.com](http://www.djcoregon.com)  
**Rynni Henderson**, [rynni.henderson@djcoregon.com](mailto:rynni.henderson@djcoregon.com)

**Hoffman, Stewart & Schmidt P.C.**

4900 Meadows Road, Suite 200  
 Lake Oswego, OR 97035  
 Phone: 503-220-5900  
 Fax: 503-220-8836  
 Web site: [www.hss-cpas.com](http://www.hss-cpas.com)  
**Jason Hall**, [jason@hss-cpas.com](mailto:jason@hss-cpas.com)

**Law Office of Joseph A. Tripi, PC**

806 SW Broadway Ave.  
 Jackson Tower, Suite 800  
 Portland, OR 97205  
 Phone: 503-546-1505  
 Fax: 503-546-2200  
 Web site: [www.tripilaw.com](http://www.tripilaw.com)  
**Joseph A. Tripi**, [joe@tripilaw.com](mailto:joe@tripilaw.com)

**LaPorte & Associates, Inc.**

5515 SE Milwaukie Ave.  
 Portland, OR 97202  
 Phone: 503-239-4116  
 Fax: 503-231-9021  
**Jon Niedermeyer**, Licensed Health Consultant, [jniedermeyer@laporte-insurance.com](mailto:jniedermeyer@laporte-insurance.com)  
**Marvin LaPorte**, President  
**Steve Byerley**, Vice President



**Liberty Mutual Surety/  
Liberty SuretyFirst**

16505 SW 72nd Ave. Bldg. F  
Portland, OR 97224  
Phone: 503-697-0171  
Fax: 866-547-4875  
Web site: [www.libertymutualsurety.com](http://www.libertymutualsurety.com)

**Scott Pyritz**, [Scott.Pyritz@LibertyMutual.com](mailto:Scott.Pyritz@LibertyMutual.com)

**Kyle Smith**, [KyleE.Smith@LibertyMutual.com](mailto:KyleE.Smith@LibertyMutual.com)

**Marianne Paine**,  
[Marianne.Paine@LibertyMutual.com](mailto:Marianne.Paine@LibertyMutual.com)

**NW College of Construction**

*Offering construction craft, safety, supervisory  
and management training.*

8111 NE Holman St.  
Portland, OR 97218  
Phone: 503-256-7300  
Fax: 503-252-9560  
Web site: [www.nwcoc.com](http://www.nwcoc.com)  
Email: [info@nwcoc.com](mailto:info@nwcoc.com)

**Oregon Water Resources Congress**

1201 Court St. NE, Suite 303  
Salem, OR 97301  
Phone: 503-363-0121  
Fax: 503-371-4926  
Email: [owrc.info@gmail.com](mailto:owrc.info@gmail.com)  
Web site: [www.owrc.org](http://www.owrc.org)

**Anita Winker**, *Executive Director*

**April Snell**, *Assistant Director*

**Marc Thalacker**, *Federal Affairs Committee Chair*

**Sloy, Dahl & Holst, Inc.**

1230 SW 1st Ave. Suite 310  
Portland, OR 97204  
Phone: 503-248-9800  
Fax: 503-248-7088  
Web site: [www.sdh-inc.com](http://www.sdh-inc.com)  
**Ron Sloy**, *CFP*, [ronsloy@sdh-inc.com](mailto:ronsloy@sdh-inc.com)

**Stewart Sokol & Gray, LLC**

2300 SW 1st Ave. Suite 200  
Portland, OR 97201  
Phone: 503-221-0699  
Fax: 503-223-5706  
Web site: [www.lawssg.com](http://www.lawssg.com)

**John Spencer Stewart**, [jstewart@lawssg.com](mailto:jstewart@lawssg.com)

**Jan D. Sokol**, [jdsokol@lawssg.com](mailto:jdsokol@lawssg.com)

**Thomas A. Larkin**, [tlarkin@lawssg.com](mailto:tlarkin@lawssg.com)

**Robert B. Coleman**, [rcoleman@lawssg.com](mailto:rcoleman@lawssg.com)

See Our Ad Page 23

**Travelers Bond**

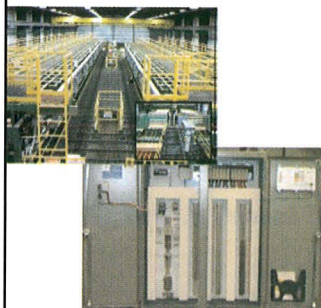
4000 Kruse Way Place  
Building One, #125  
Lake Oswego, OR 97035  
Phone: 503-534-4290  
Fax: 503-534-4288  
Web site: [www.travelers.com](http://www.travelers.com)  
**Darrin Oelke**, [doelke@travelers.com](mailto:doelke@travelers.com)  
**Erin Bullard**, [ebullard@travelers.com](mailto:ebullard@travelers.com)  
**Stacey Poirier**, [spoirier@travelers.com](mailto:spoirier@travelers.com)

**Yazbeck, Cloran & Bowser, PC**

1300 SW 5th Ave. #2750  
Portland, OR 97201  
Phone: 503-227-1428  
Fax: 503-227-4866  
**Joseph A. Yazbeck Jr.**, [jay@ycblaw.com](mailto:jay@ycblaw.com)

**Willis of Oregon**

222 SW Columbia St., Suite 600  
Portland, OR 97201  
Phone: 503-224-4155  
Fax: 503-274-2155  
Web site: [www.willis.com](http://www.willis.com)  
**Johnathan G. Woolworth**



**INDUSTRIAL CONTRACTING**  
UL508A LISTED CONTROL  
PANELS  
DESIGN/BUILD  
FREQUENCY DRIVES  
PLC CONTROL SYSTEMS

**800-533-2867**



**SWEEPING**  
HYRDO-EXCAVATION  
HAZARDOUS MATERIALS  
EMERGENCY RESPONSE &  
REMEDIATION  
INDUSTRIAL CLEANING  
DISPOSAL

**888-423-6316**



**MOBILE FILTER PRESS**  
CENTRIFUGE WORK  
FILTERING  
DREDGING  
GEO TUBE DEWATERING  
CONSULTING

**360-532-4309**

**We've grown to include these services!**

Visit [www.pnecorp.com](http://www.pnecorp.com) to see our full list of services and locations

**DJC  
PROJECT  
CENTER**

**Search. Find. Bid.**

**From idea to the completed  
project —let the DJC help you  
win the job.**

The DJC Project Center online  
offers the best project information  
at an unbelievable price.  
**Now, with plans & specs online!**

- ✓ Experienced local customer service
- ✓ PDFs of Plans and Specs
- ✓ Daily and weekly construction update emails
- ✓ Email alerts for projects you are tracking, and instant alerts when a project arrives that meets your desired scope of work
- ✓ BBC Directory Listing – make it easy for people to find your company!
- ✓ Now includes up to 3 "seats" (log-in ID's) for your company

**For more details,  
call Betty for a tour at 503.802.7252**



# DIVIDEND RELEASED TO CONTRACTORS



Health Net  
Insurance

Aflac  
Insurance

3 - \$1500  
Educational  
Scholarships

Access to  
Resource  
materials

Discounts on  
cellular service  
and equipment  
through  
Sprint/Nextel  
Corporation

Tuition credits  
and 30%  
discount on  
books & lab fees  
at the NW  
College of  
Construction

## NUCA MEMBERS RECEIVE \$191,000 INSURANCE DIVIDEND

**A.G. Sadowski Company**  
503-362-2711 Derek Sadowski

**Anchor Insurance & Surety, Inc.**  
503-224-2500 Rick Kowalski

**Assurety Northwest Insurance Agency**  
503-205-8111 Janelle Markovich

**Beecher Carlson Insurance Agency, LLC**  
503-219-3202 Jeff Broyles

**Biggs Insurance Services**  
360-828-3780 or 503-285-9700  
Cynthia Hilton



www.nucaorswwa.com | 503-742-8877

## NUCA HAS OPENED NEW MEMBER ENROLLMENT FOR PARTICIPATION IN THE GROUP

### Nuca Of Oregon And Southwest Washington Announces First Ever Insurance Dividend

Portland, Oregon – November 2011 – The local chapter of NUCA which represents Utility and Excavation Contractors throughout Oregon and Southwest Washington (including Clark, Cowlitz, Skamania, Wahkiakum and others) has delivered dividend checks totaling over \$191,000 to members that participate in the chapters Insurance Dividend Program.

This program represents over 35 local contractors involved in utility or excavation work in the Northwest. The first of its kind in the country, this program rewards participating contractors for achieving low loss ratios, as a group, on general liability, automobile, equipment and property insurance coverage.

The program, underwritten by Bituminous Insurance Company, is an exclusive benefit for chapter members and provides extremely competitive insurance coverage with the added benefit of a potential dividend for controlling losses. At the center of the program is a safety and loss control program comprised of contractors, brokers, safety professionals and loss control specialists from Bituminous Insurance. This group works closely with the participating members to identify and address troublesome loss or claim trends.

With potential dividend payouts approaching 25% of premiums depending on loss ratios for the calendar year, the members have excellent incentive to actively create safe work environments, train safety conscious employees and promote loss awareness throughout their companies. The member contractors work in many construction trades but have a common thread in the support and knowledge of the utility, excavation and underground specialties but most importantly a desire to be rewarded for controlling claims.

Melinda Dailey, executive director for NUCA of Oregon and Southwest Washington, believes this program is a major benefit to her associations membership, although it is one of many the members enjoy. She has seen membership grow dramatically since the program was created in 2006. Steve Dukart, chapter president, has been very pleased with the quality of the claims management, loss prevention services, and especially the excellent coverage provided by Bituminous Insurance. His company, Duke Construction and Excavation, works throughout Oregon and Southwest Washington on both public and private projects. Steve said "Insurance coverage that is competitively priced and tailored to our industry is important to my bottom-line, but to also get a percentage of my premium back in my pocket makes the NUCA Insurance Dividend Program a no-brainer!"

The program does not have a common anniversary date and new members can join at anytime. Program quotes are available from any of the participating NUCAORSWWA member brokers and agents. Contact Melinda Dailey, Executive Director or any NUCAORSWWA member for more information.

NUCA of Oregon and Southwest Washington  
www.nucaorswwa.com  
Melinda Dailey, Executive Director 503-742-8877



# Safety first. Let us help.

- The largest inventory of trench safety rental protective systems
- Competent Person Training and Confined Space Training
- Expert trench safety plans designed by a Registered Professional Engineer
- Online account management and analysis tools at no charge through URdata® technology



## Trench Equipment

- |                                   |                                 |                                  |
|-----------------------------------|---------------------------------|----------------------------------|
| • Aluminum Hydraulic Shores       | • Mega Bracing Systems          | • Confined Space Entry Equipment |
| • Trench Boxes (Aluminum & Steel) | • Sheeting                      | • Gas Monitors                   |
| • Bedding Boxes                   | • Beam and Plate Systems        | • Blowers and Ventilators        |
| • Slide-Rail Systems              | • Customized Engineered System  | • Pipe Testing Equipment         |
| • Manhole Braces                  | • Road Plates (4'x8' to 8'x20') | • Pipe Plugs 4" to 96"           |

## Call or stop by your local branch:

Abbotsford, BC, Canada  
604-851-4215

Seattle, WA  
206-767-3121

Tacoma, WA  
253-548-8300

Portland, OR  
503-255-3449

Spokane Valley, WA  
509-534-7294

Woodinville, WA  
425-424-8896

Rentals • Sales • Service • Supplies

800-UR-RENTS  
[unitedrentals.com](http://unitedrentals.com)