

Central City 2035

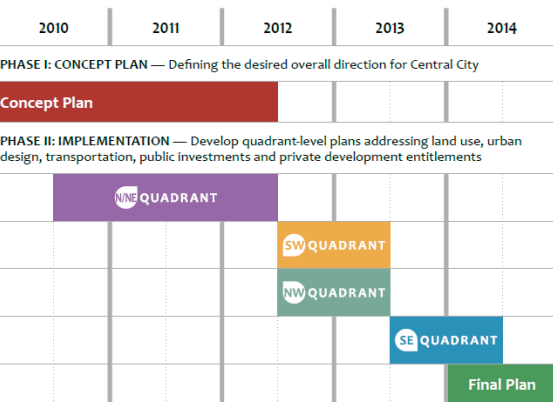
Central City 2035

Portland's Central City is home to thriving urban neighborhoods and the core of the regional economy. It is a resource for the metro area with its concentration of jobs, innovative cultural and entertainment destinations, bustling retail districts, urban universities and direct access to the Willamette River.

It is important that we plan for the continued success of the Central City. As an update to the 1988 *Central City Plan*, Central City 2035 (CC2035) will address new challenges and opportunities to ensure a vibrant and sustainable Central City, now and in the future.

The following are potential regulatory issues to be discussed as part of CC2035.

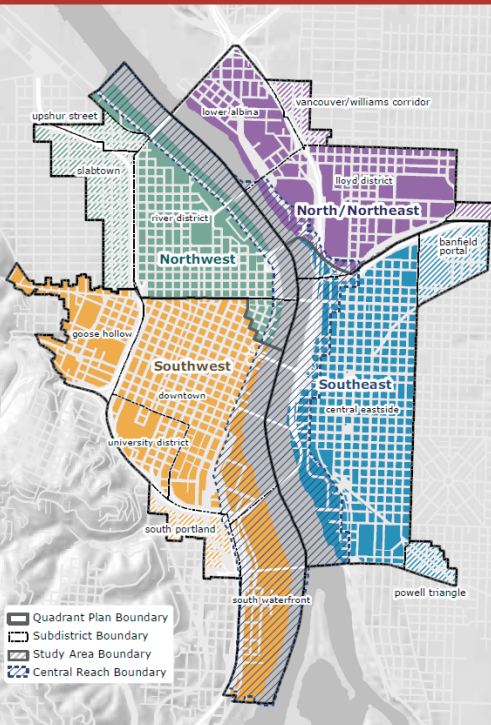
- The Public Realm
- Willamette River
- Central City Plan District
- Development Bonus Provisions
- Central City Parking Access, Capacity and Mode Split
- Urban Form and Design Review
- Historic Preservation
- Sustainability and Land Use



Phase I: Concept Plan Development — Set overall direction for the future of the Central City related to . . .



Phase II: Plan Implementation — Identify specific ways to implement the Concept Plan:



Quadrant Plans — Develop a framework for each of the four Quadrants of the Central City, including detailed plans for the subdistricts within each Quadrant

Regulatory Improvement — Adjust land use, zoning, transportation and development regulations



Have questions?
 Check out the project website at: www.portlandonline.com/bps/cc2035
 or contact the project staff:

Joe Zehnder, Chief Planner
 (503) 823-7815
joe.zehnder@portlandoregon.gov

Steve Iwata, Central City Supervisor
 (503) 823-9904
steve.iwata@portlandoregon.gov

Troy Doss, CC2035 Lead
 (503) 823-5857
troy.doss@portlandoregon.gov

CC2035 Steering Committee Members

Mike Zokoych

Central Eastside Industrial Council

Paddy Tillett

Zimmer Gunsul Frasca Architects

Chet Orloff

CC2025 Advisory Group

Michelle Rudd

Planning & Sustainability Commission

Andre Baugh

Planning & Sustainability Commission

Ethan Seltzer

PSU Urban Studies Program

Amy Lewin

Hosford – Abernethy Neighborhood
Development

Linda Nettekoven

Hosford – Abernethy Neighborhood
Development (Alternate member)

David Knowles

Former Planning Director / Transportation
Planner

Patricia Gardener

Pearl District Neighborhood Association

Bernie Bottomly

Portland Business Alliance

Wink Brooks

Urban Land Institute / Former Planning
Director, Hillsboro

Jeff Miller

Travel Portland

Veronica Rinard

Travel Portland (Alternate member)

Erin Flynn

Portland State University

Heather Hoell

Venture Portland

James McGrath

AIA Urban Design Panel

Bill Scott

Small Business Owner

Mary Wahl

Public-at-large