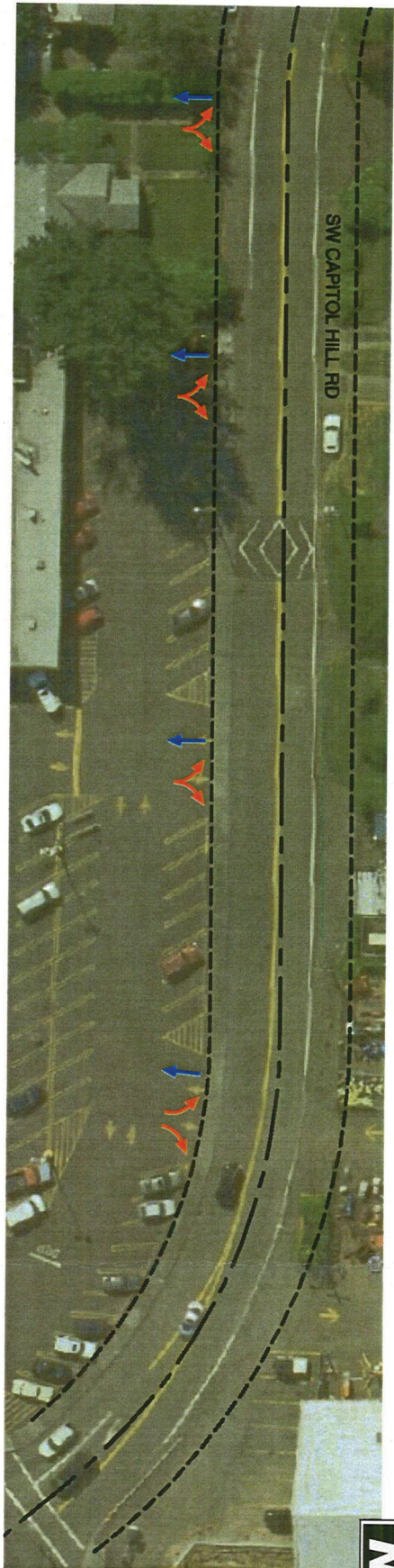
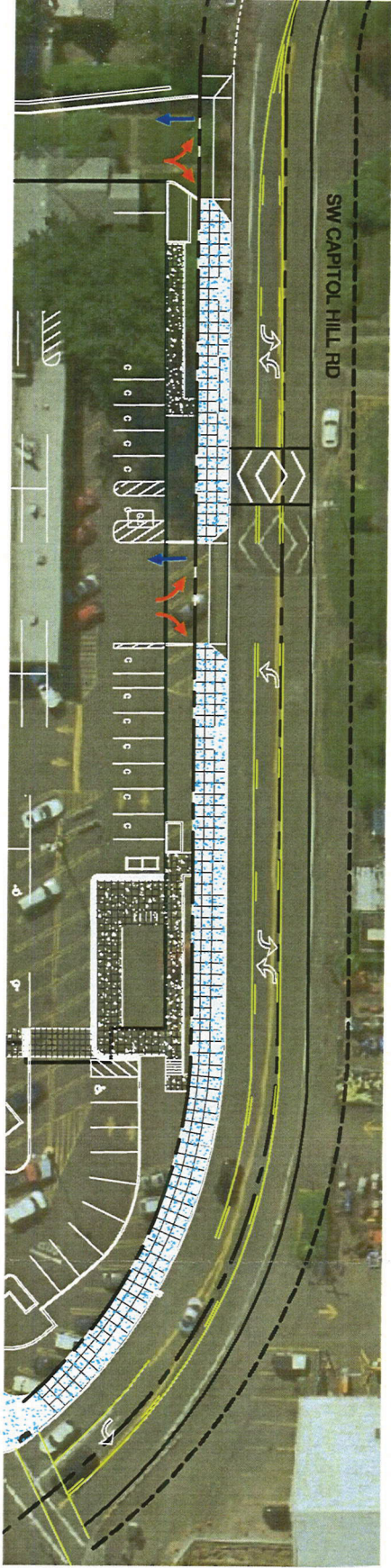
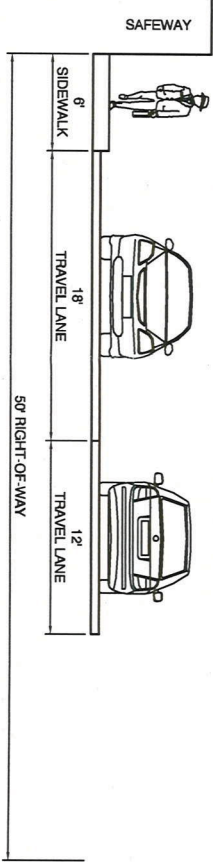


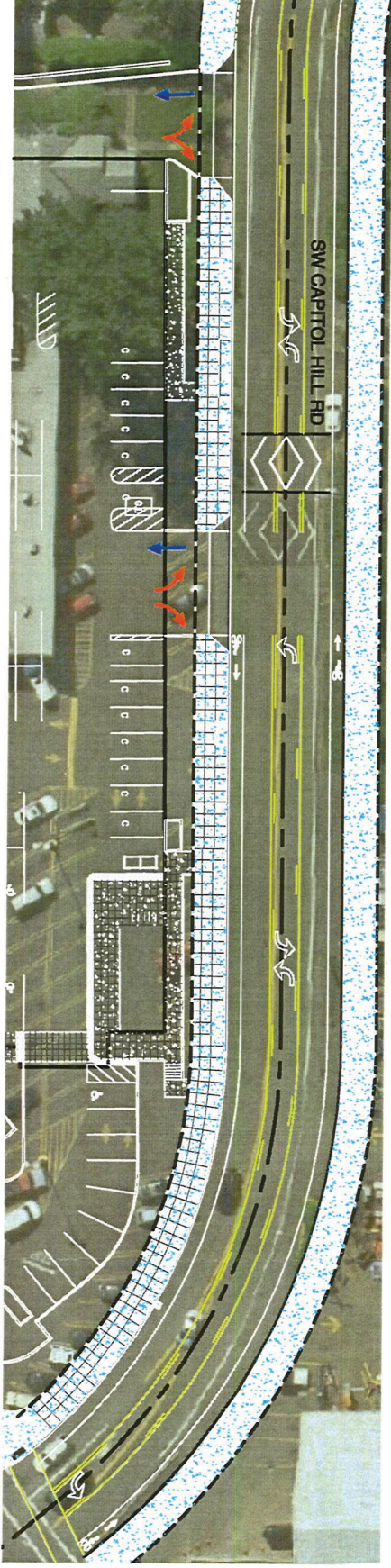
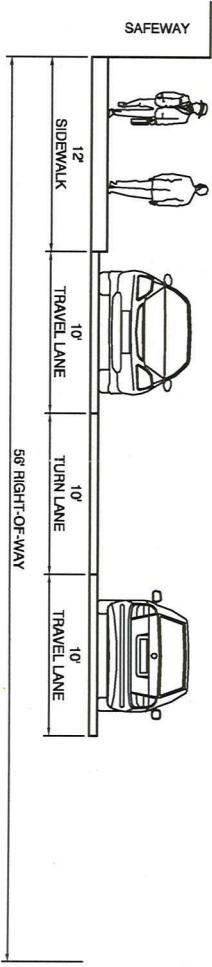
Submitted by  
Chris Brehmer  
1/26/2012  
January 2012



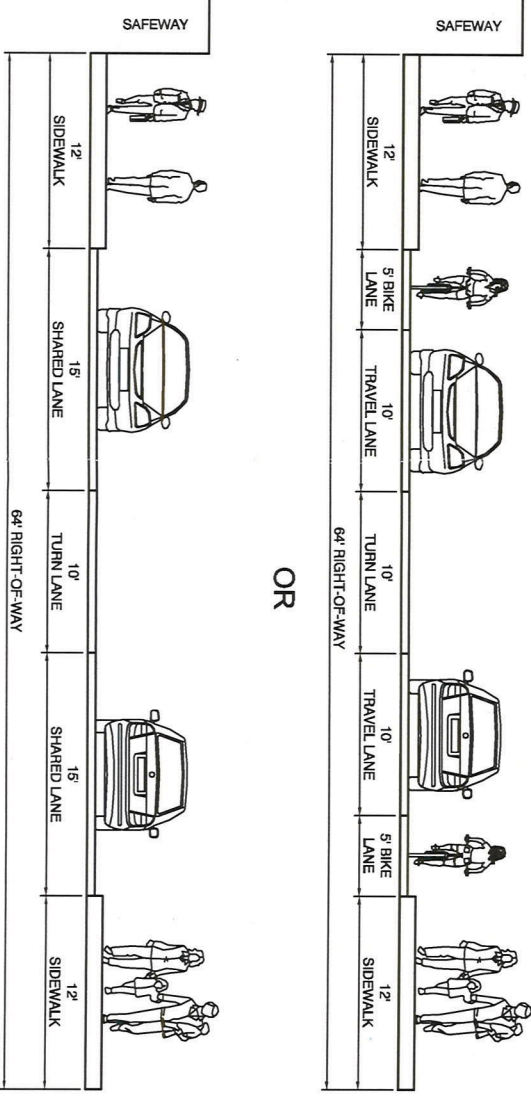
EXISTING CONDITIONS



PROPOSED CONDITIONS WITH SAFEWAY REDEVELOPMENT



POTENTIAL FUTURE CONDITIONS  
(ADDITIONAL WIDENING BY OTHERS)



CAPITOL HILL ROAD CROSS SECTIONS  
PORTLAND, OREGON



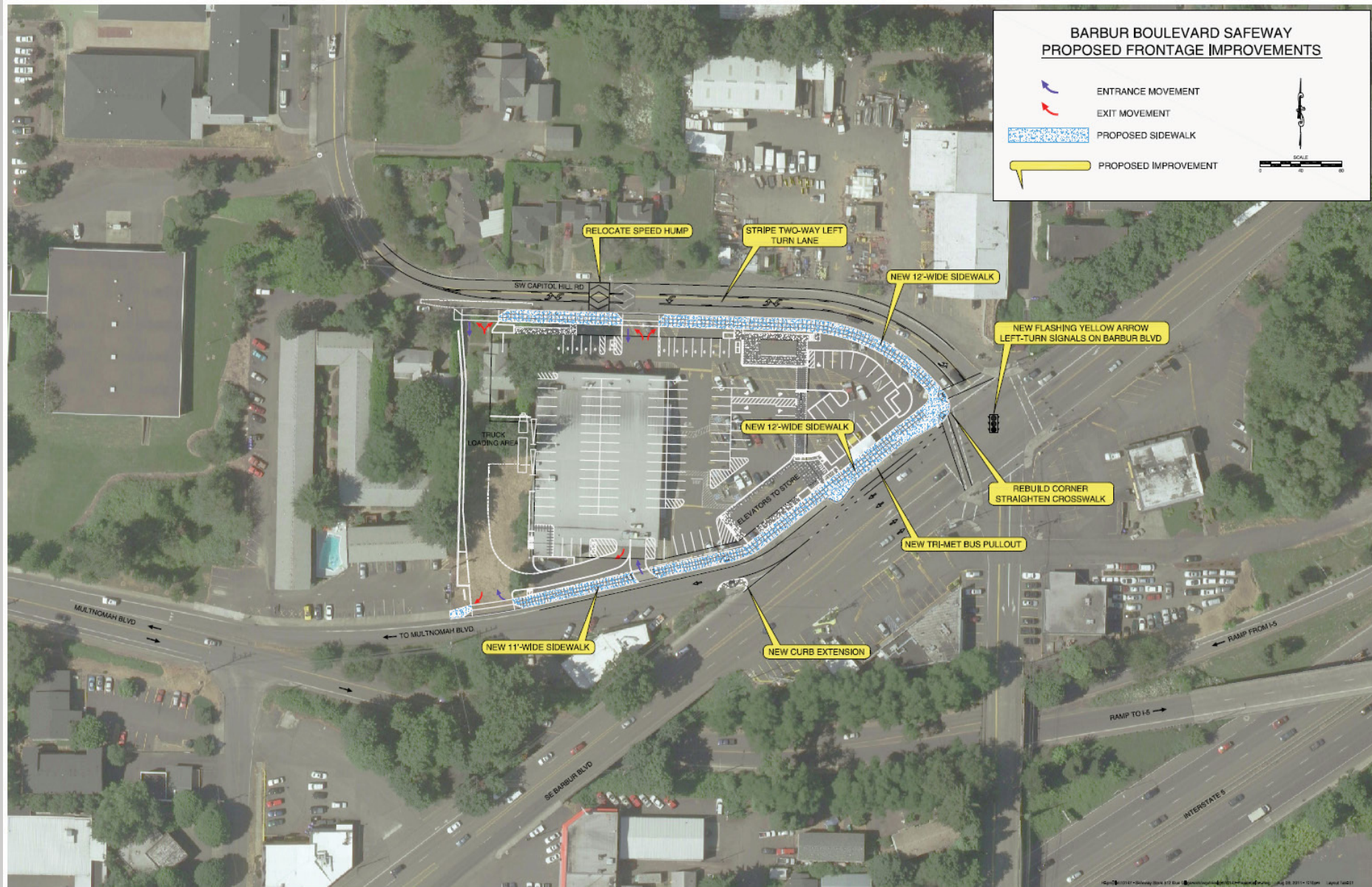
# Existing Site/Transportation Challenges



->Insights from multiple parties: Neighborhood, PBOT, ODOT, TriMet



# Proposed Transportation Solutions



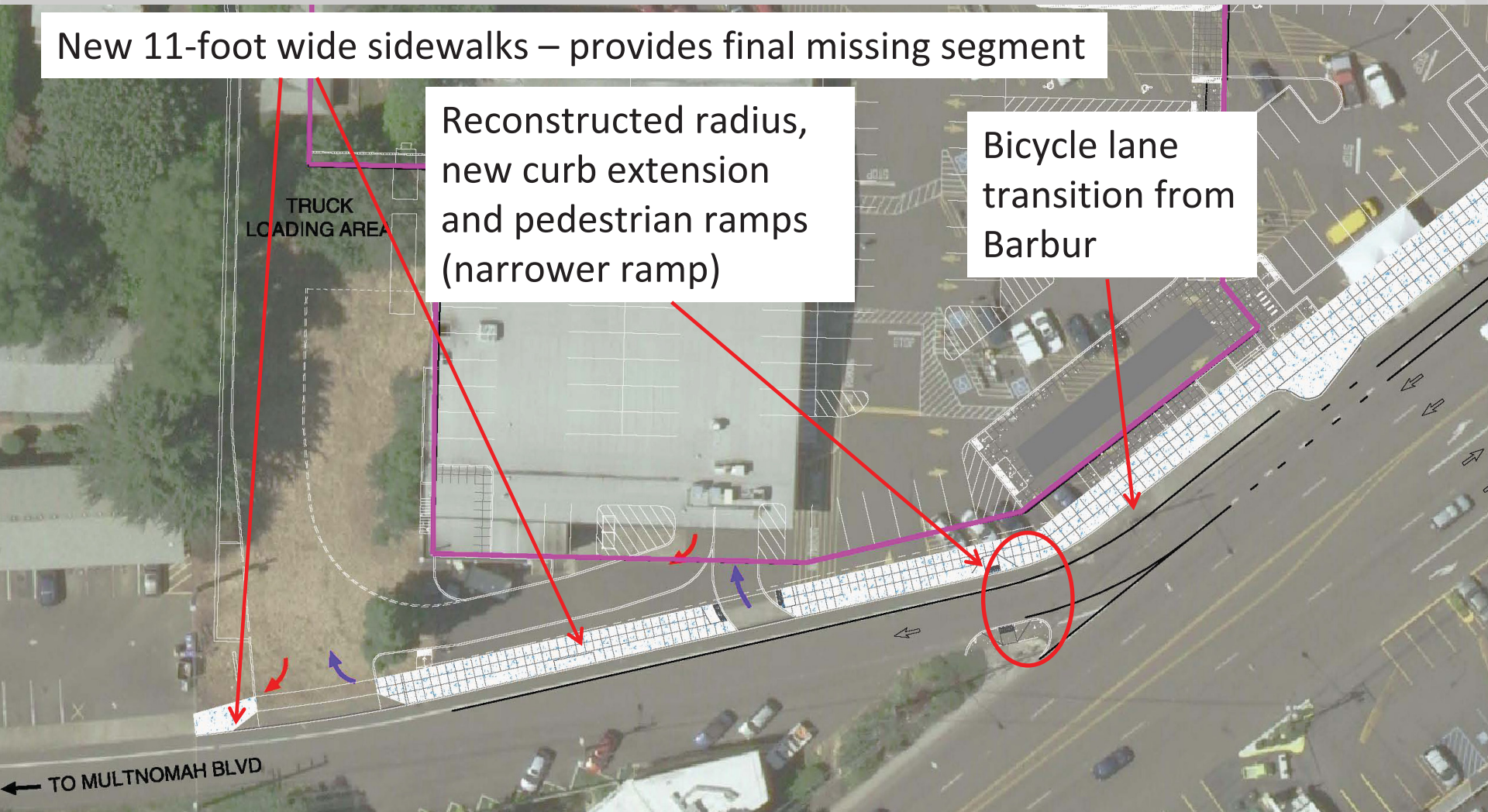


# Proposed Transportation Solutions – Multnomah Ramp

New 11-foot wide sidewalks – provides final missing segment

Reconstructed radius, new curb extension and pedestrian ramps (narrower ramp)

Bicycle lane transition from Barbur

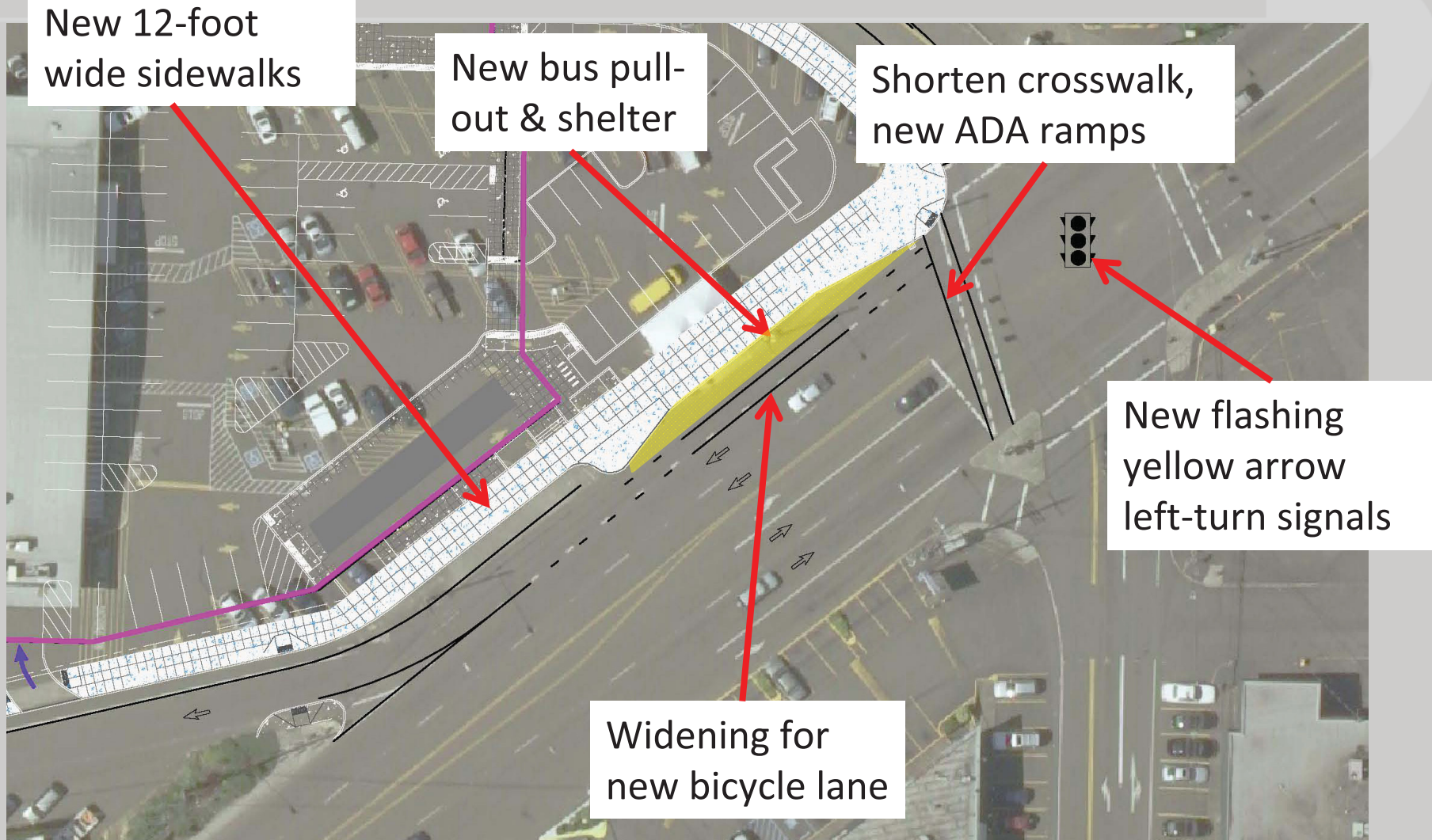


->Result: More pedestrian friendly, more bicycle friendly, reduce vehicle speeds



KITTELSON & ASSOCIATES, INC.  
TRANSPORTATION ENGINEERING/PLANNING

# Proposed Transportation Solutions – Barbur Boulevard



->Closes all Safeway driveways, eliminates old loading dock truck turns, adds signal capacity, reduces weaving. Result: *Exceeds* Barbur Blvd. Street Plan: more pedestrian friendly, more bicycle friendly, more efficient and safer for all modes



# Proposed Transportation Solutions – Capitol Hill Road

New 12-foot  
wide sidewalks

Relocate speed  
hump

Stripe in new center  
left-turn lane

Provide shared  
lane markings

TRUCK  
LOADING AREA

->Consolidates Safeway driveways and moves west away from Barbur Boulevard, adds left-turn storage capacity, provides right-of-way dedication. Result: more pedestrian friendly, more efficient and provides for future bike lanes if desired



KITTELSON & ASSOCIATES, INC.  
TRANSPORTATION ENGINEERING/PLANNING