



# Barbur Concept Plan

June 14, 2011



Bureau of Planning and Sustainability  
Innovation. Collaboration. Practical Solutions.



# Overview

- Staff introductions
- Barbur Concept Plan - what is it?
- SW Corridor Plan - how does it fit in?
- SW Corridor tour
- Timeline and key milestones
- Community engagement
- PSC involvement



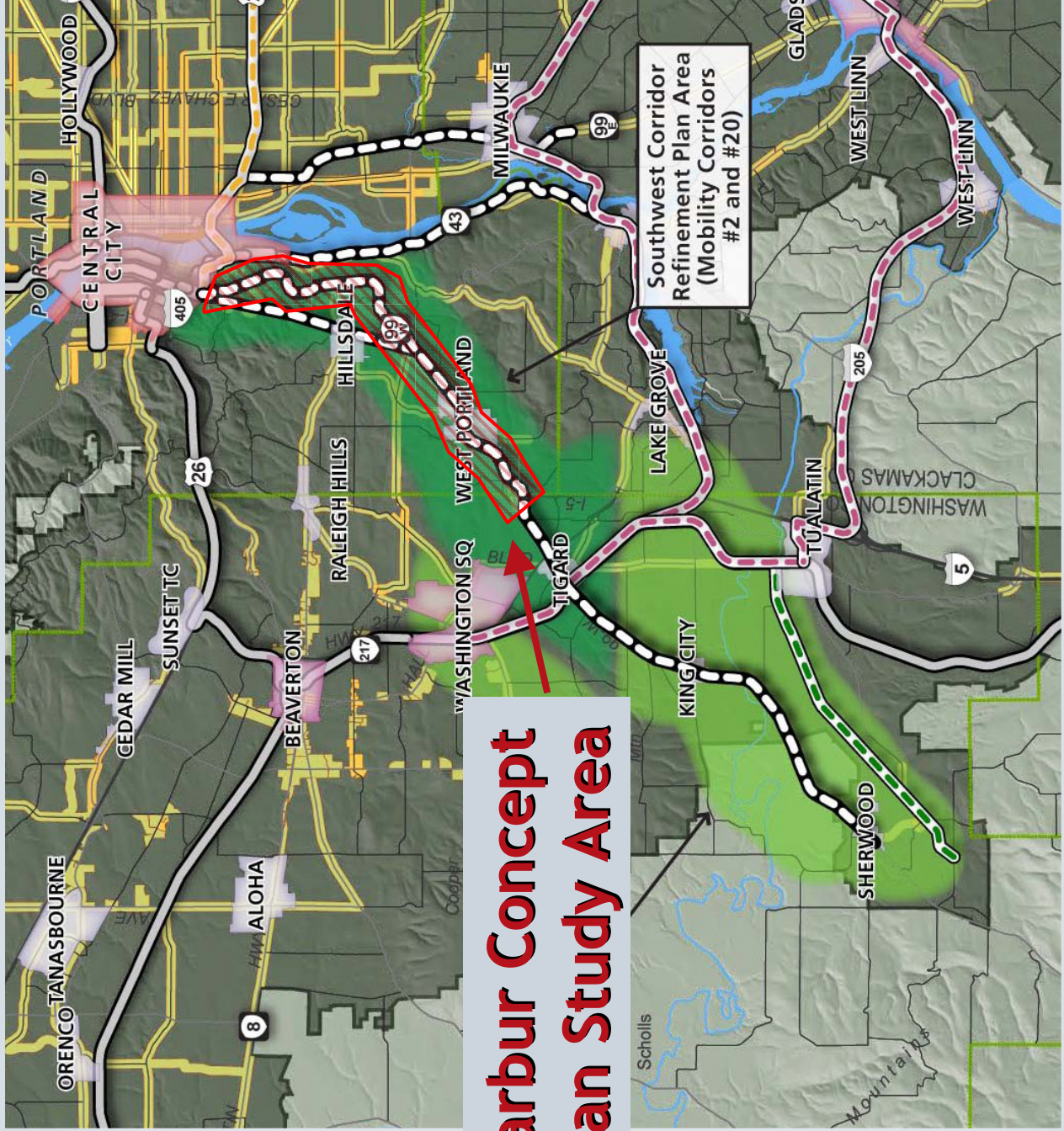
# Project Team

- Jay Sugnet - BPS Project Manager
- Morgan Tracy - BPS City Planner
- Patrick Sweeney - PBOT
- Amin Wahib - BES
- Shannon Axtel - BES
- Malu Wilkinson - Metro
- Dave Unsworth - Trimet
- Consultant team



Capitol Hill





# Barbur Concept Plan Study Area





# Barbur Concept Plan

- BPS received a grant from Metro
- 18-month process starting Summer 2011
- Three focus areas:
  - Develop a vision
  - Identify potential nodes/station areas
  - Evaluate alternative scenarios
- Influence regional High Capacity Transit (HCT) discussion

# SW Corridor Plan and Implementation Strategy

## Purpose:

Develop a coordinated investment strategy to implement a shared vision for the corridor

## Integrate:

- affordable housing
- parks and green infrastructure
- economic development
- public health

HCT Land  
Use Plan -  
Tigard

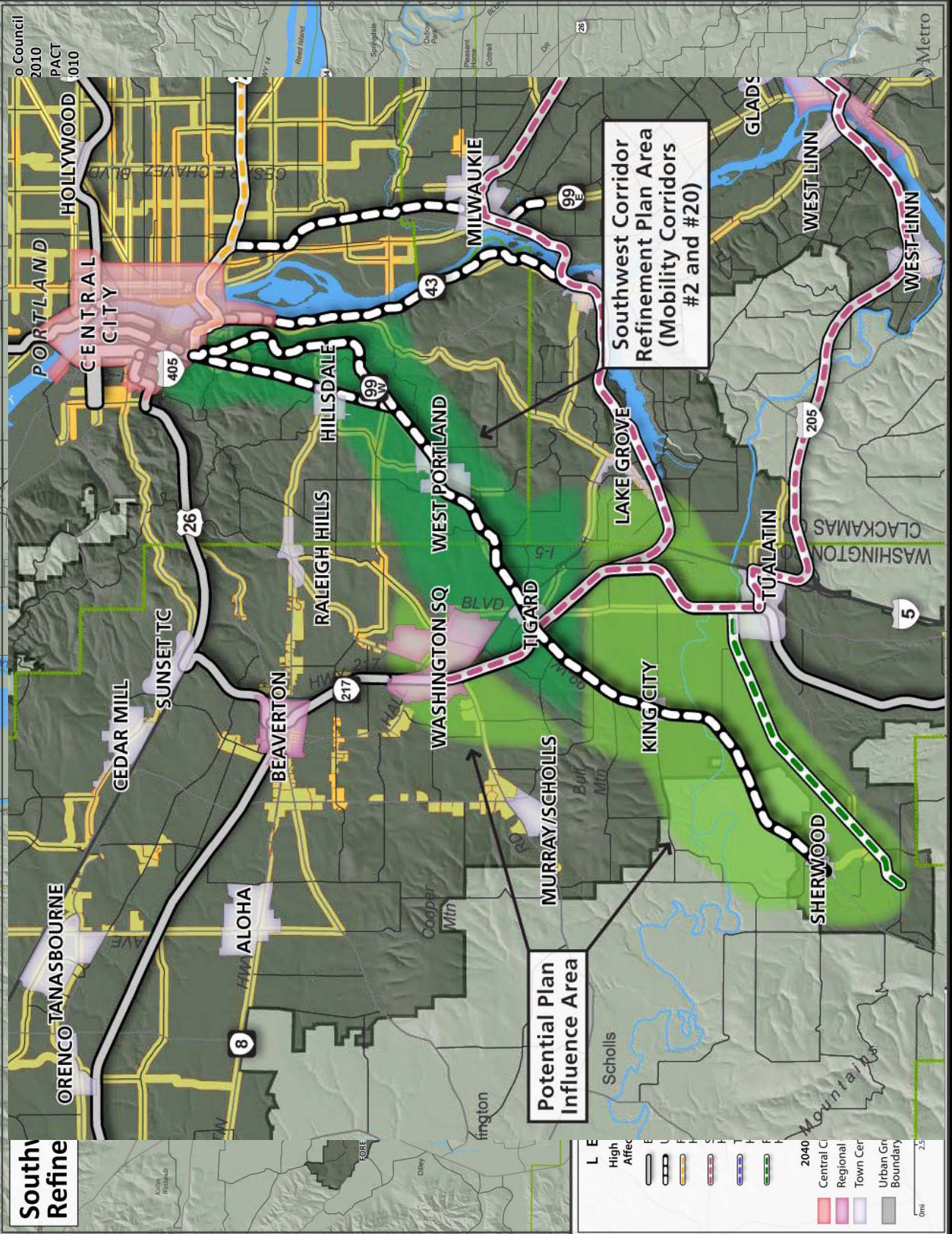
HCT Land  
Use Plan -  
Tualatin

Barbur  
Concept  
Plan

Transportation  
plan -  
Metro/ODOT

Transit  
alternatives  
analysis

# Southwest Refine



**Southwest Corridor Refinement Plan Area (Mobility Corridors #2 and #20)**

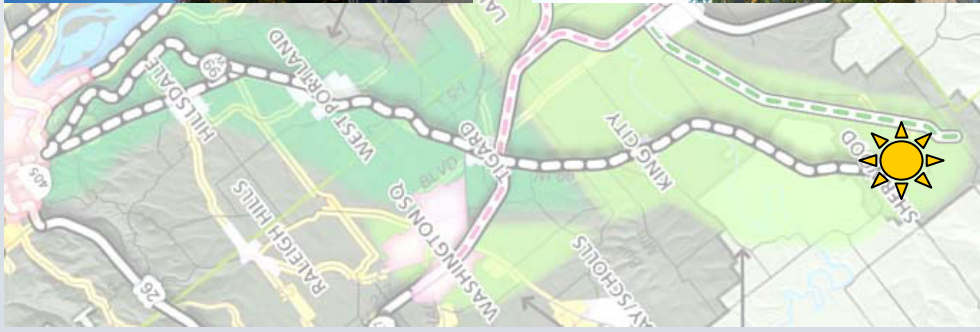
**Potential Plan Influence Area**

- LE High Affect
- 2040
  - Central City
  - Regional
  - Town Center
  - Urban Growth Boundary



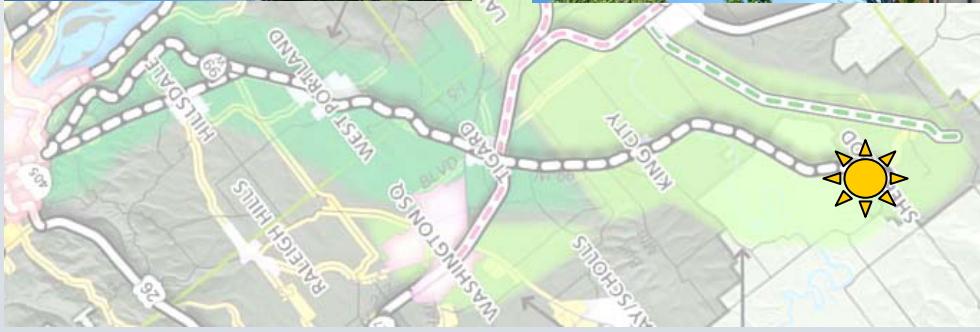


# Downtown Sherwood





# Sherwood Town Center



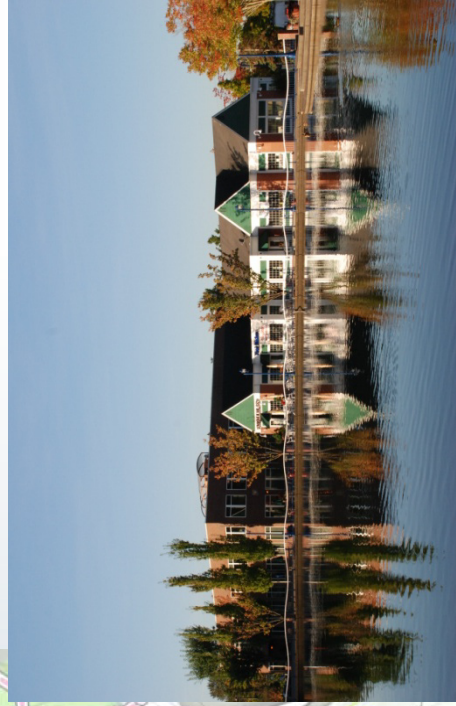
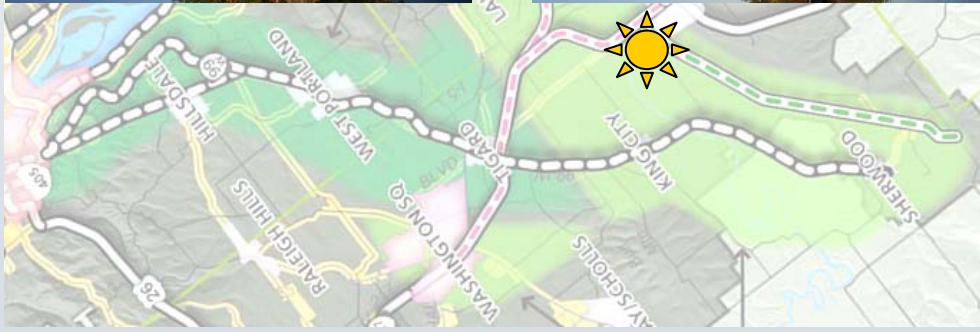


# Tualatin Refuge





# Tualatin Commons



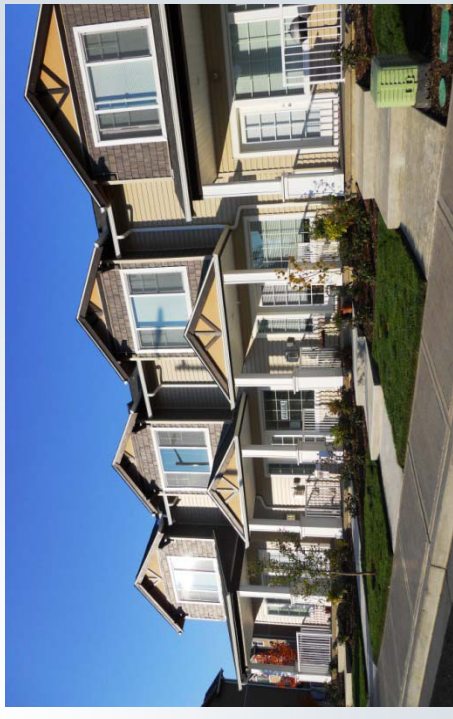
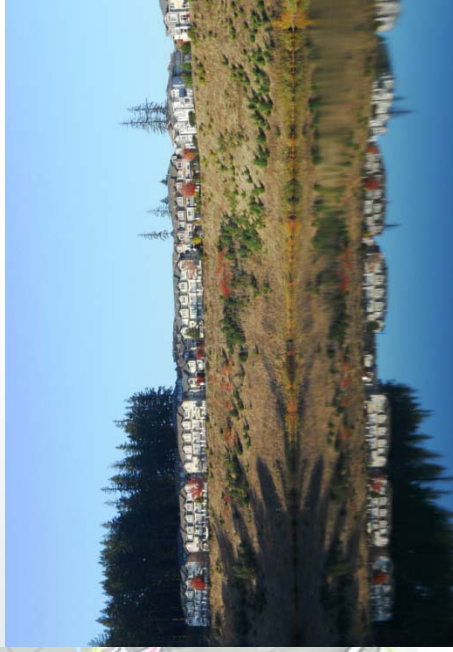


# King City



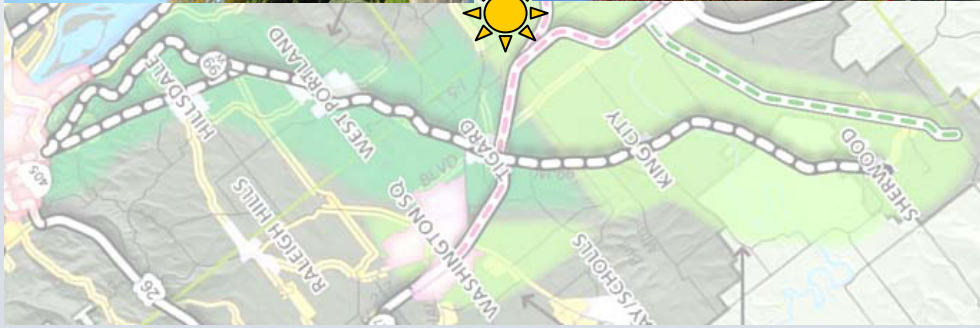


# Murray Scholl's Town Center



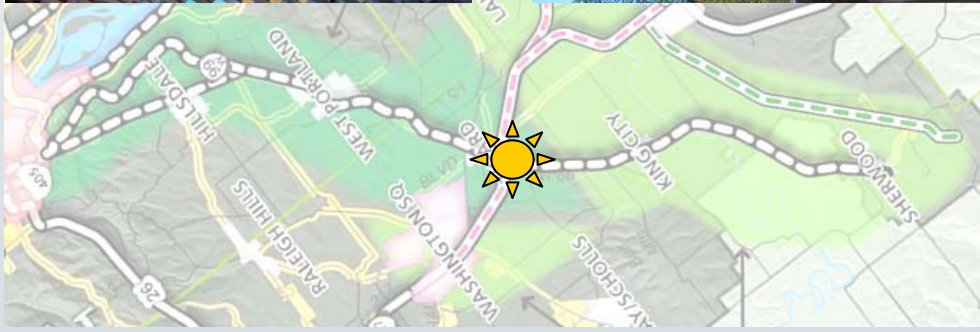


# Lake Grove



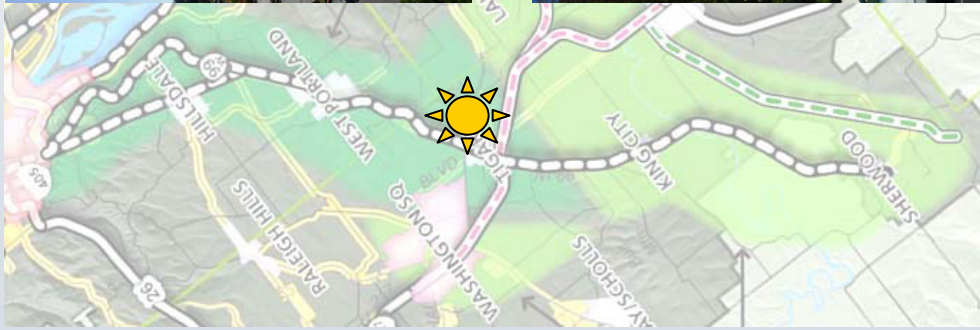


# Downtown Tigard



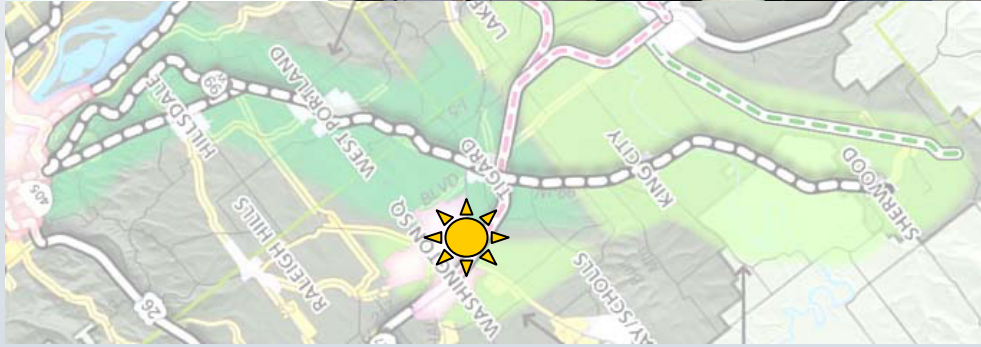


# Tigard Triangle





# Washington Square



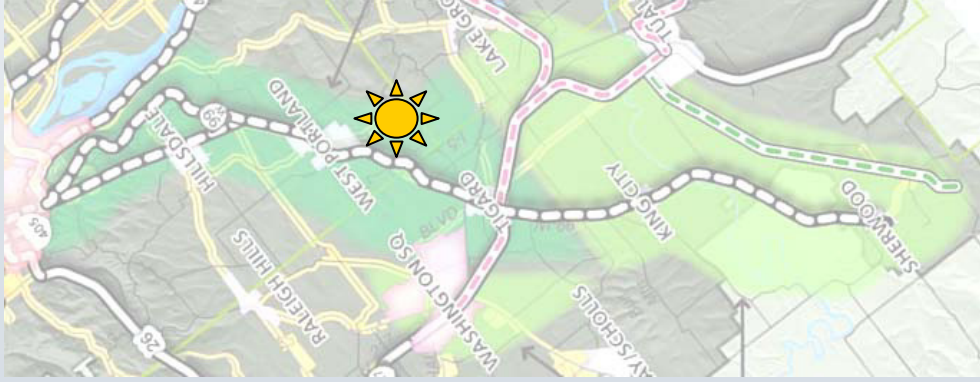


# Nimbus



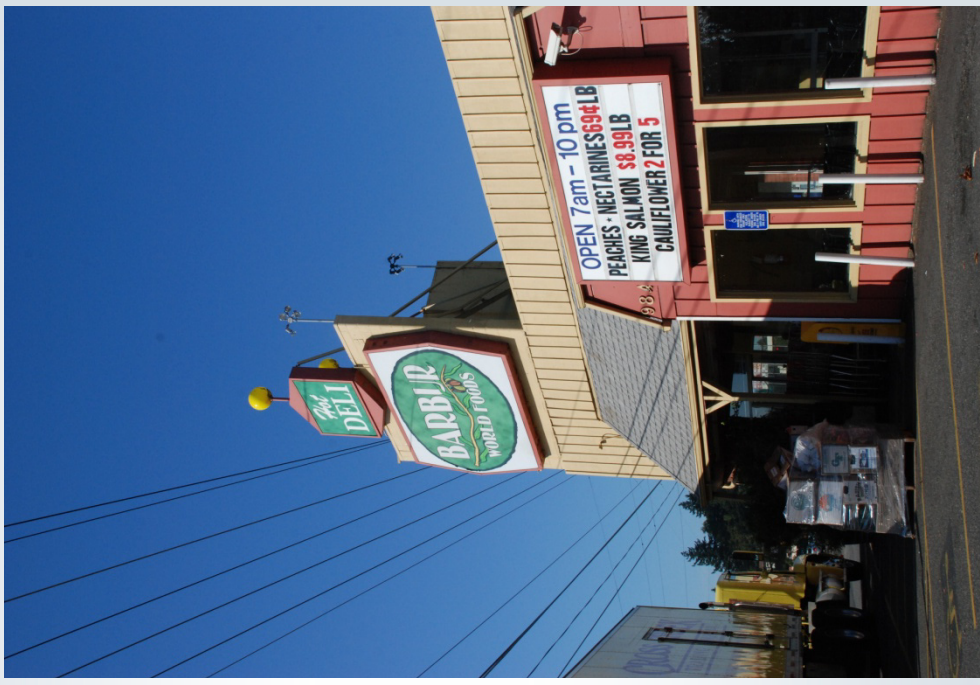
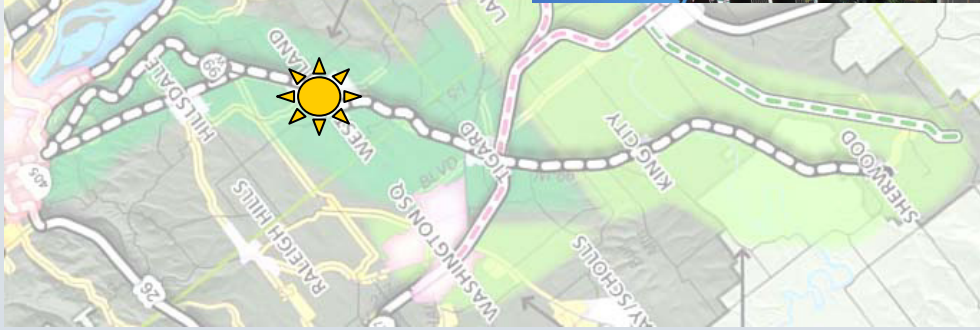


# Portland Community College



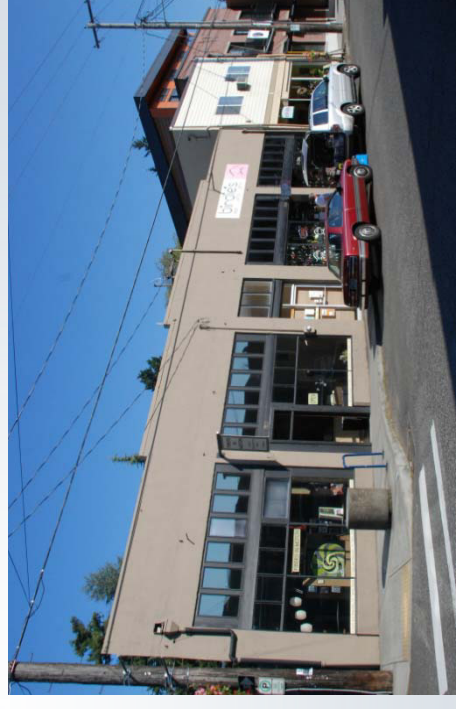
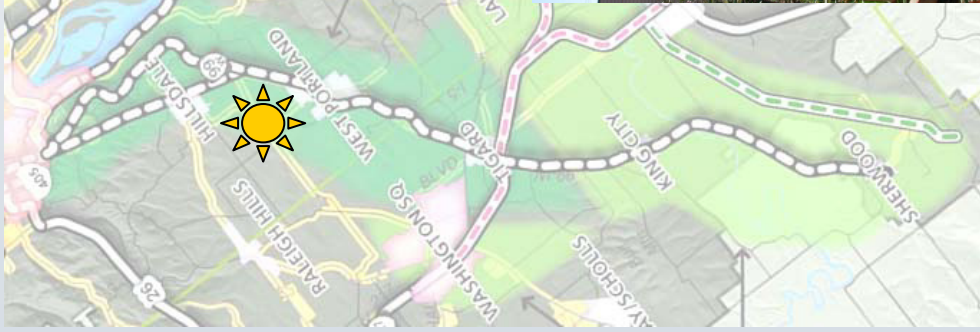


# West Portland/Crossroads



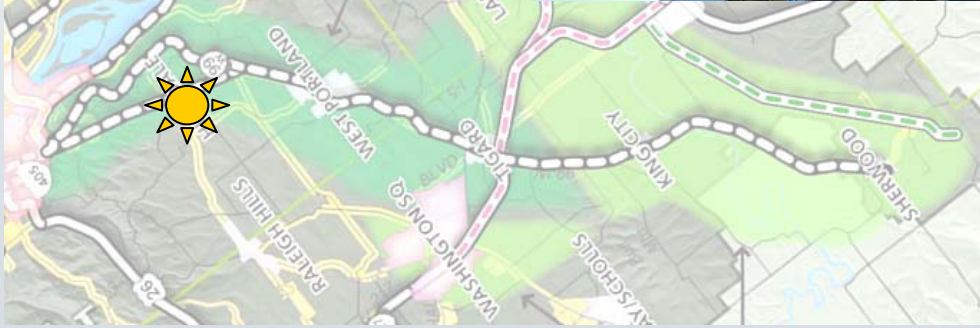


# Multnomah Village



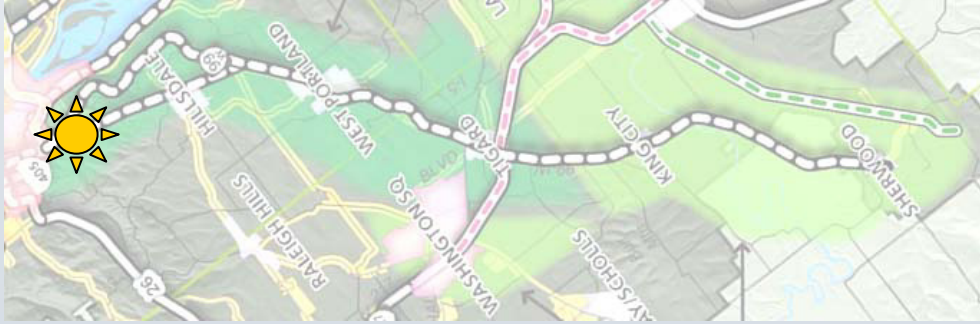
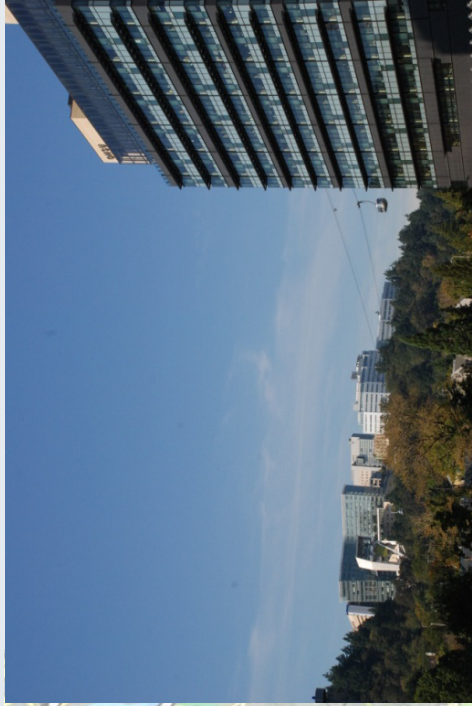


# Hillsdale



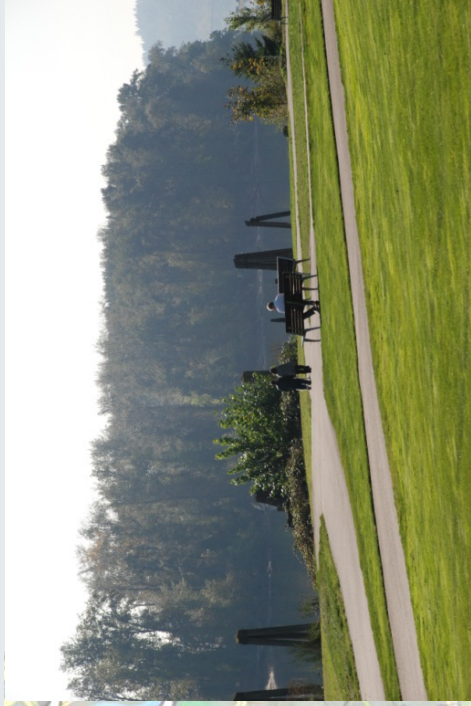
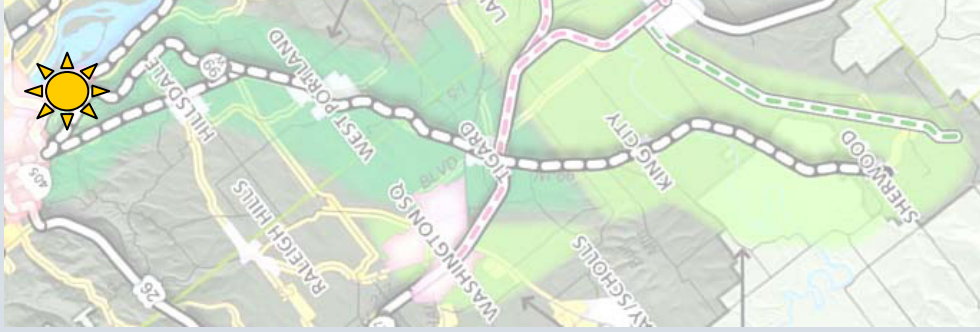


# OHSU





# South Waterfront



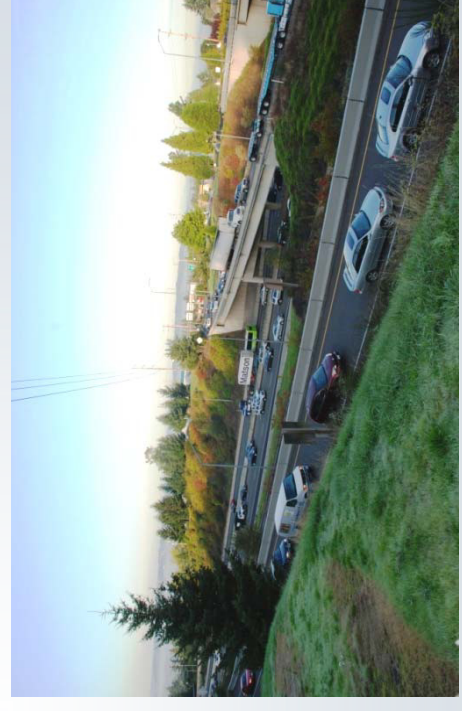
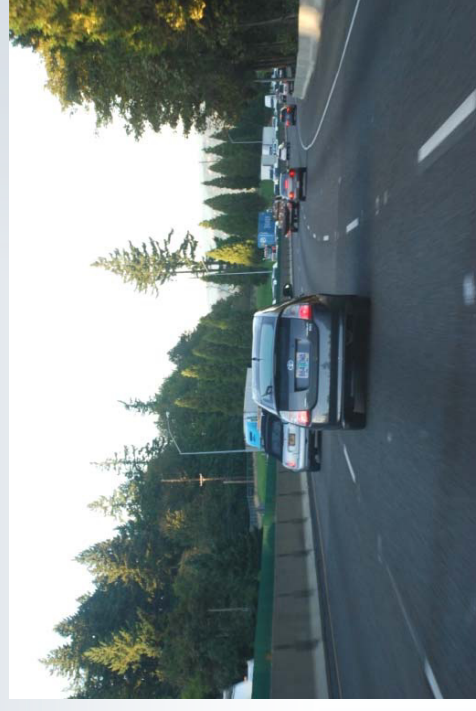
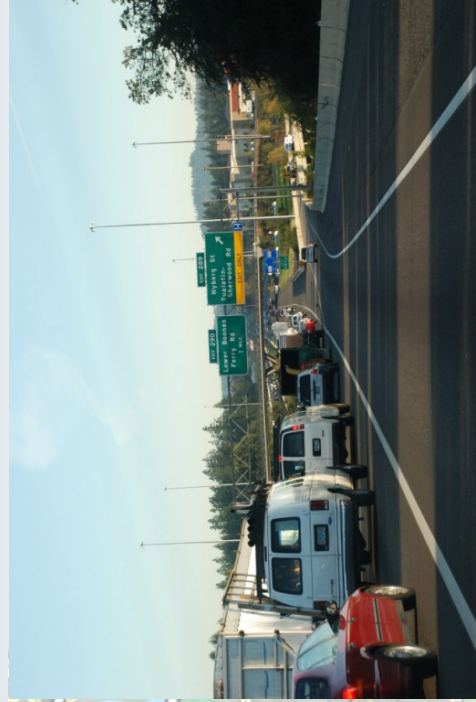
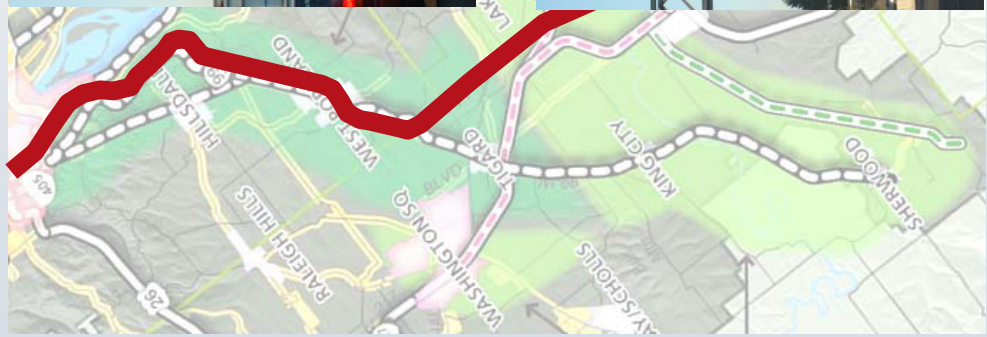


# Riverplace



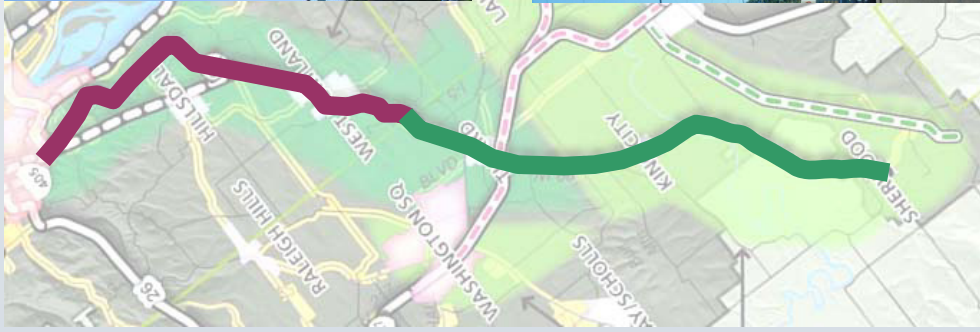


# I-5



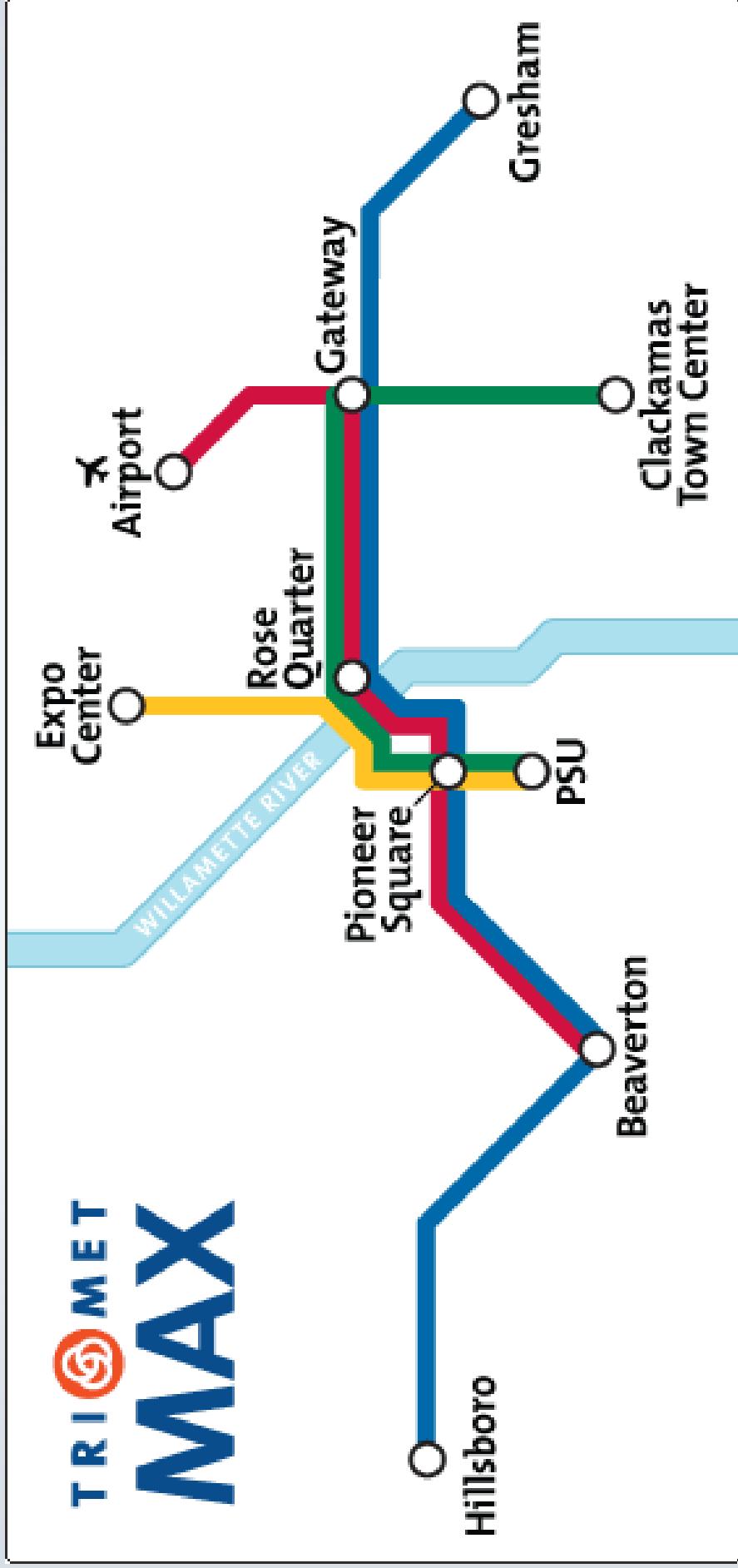


# Barbur Boulevard





# High Capacity Transit Story





# High Capacity Transit Story

1982 - Light Rail System Plan

1986 - Banfield Light Rail (Blue Line)

1998 - Westside Light Rail (Blue Line)

2001 - Airport Light Rail (Red Line)

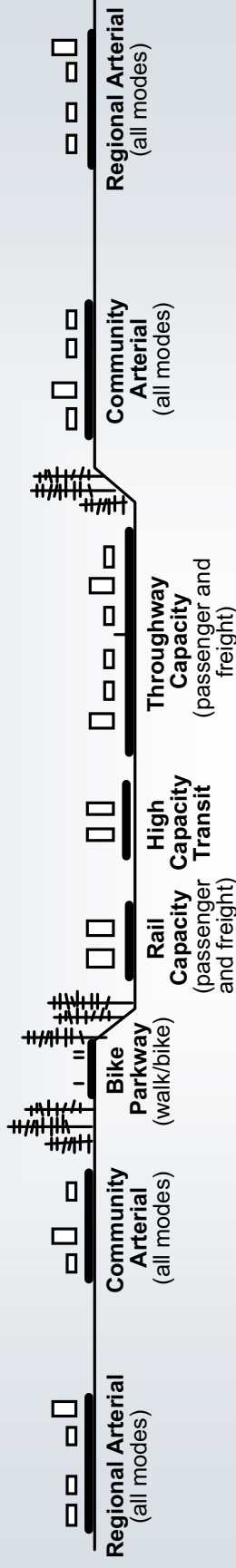
2004 - North Corridor Interstate MAX (Yellow Line)

2008 - Westside Express Service Commuter Rail

2009 - S. Corridor I-205/Portland Mall Light Rail  
(Green Line)



# Mobility Corridors



- Interconnected system of multi-modal corridors that move people and goods
- Provide primary access to 2040 land uses
- Multi-jurisdictional



# Why the SW Corridor?

- Serve major regional destinations
- Address the growing population in an already congested corridor
- Provide transportation options
- Reduce greenhouse gas emissions
- Increase access to affordable housing
- Enhance economic competitiveness
- Avoid or minimize environmental impacts

# Projected Growth

## Population

- 2010: 140,000
- 2035: 206,000

## Employment

- 2010: 163,000
- 2035: 251,000

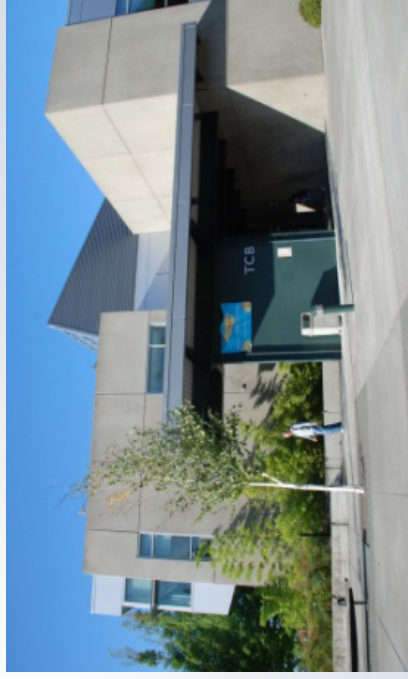
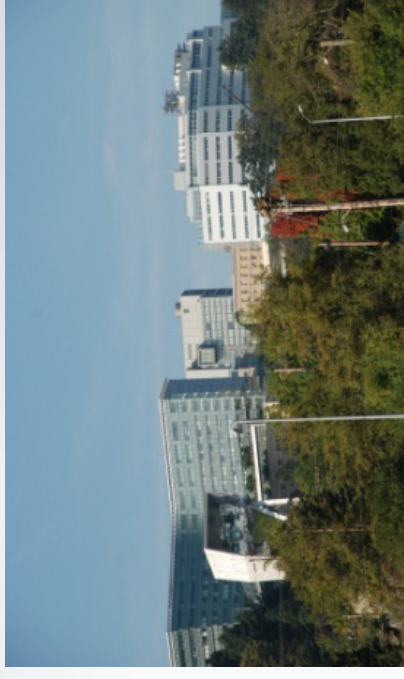




# Major Regional Destinations

Largest commercial, employment, educational and residential centers:

- Oregon Health & Science University
- Washington Square Regional Center
- Portland Community College
- Portland State University



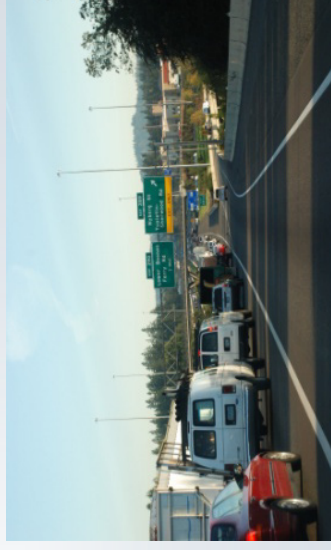
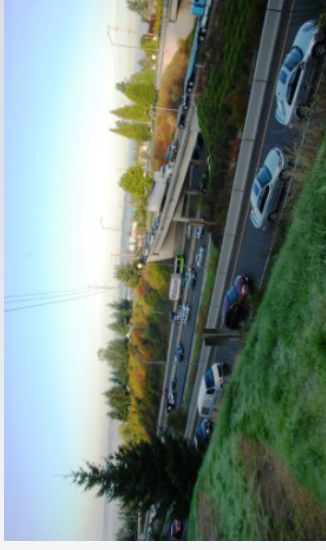
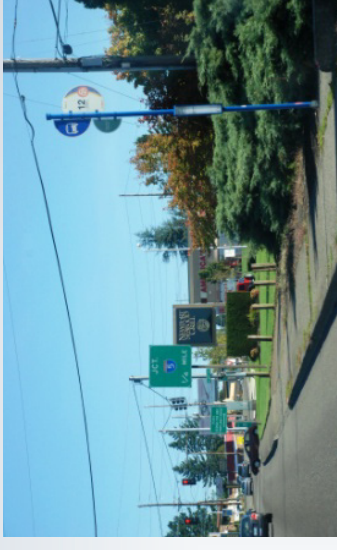
# Congestion and Access Issues

25 miles of the most highly congested corridors in the region

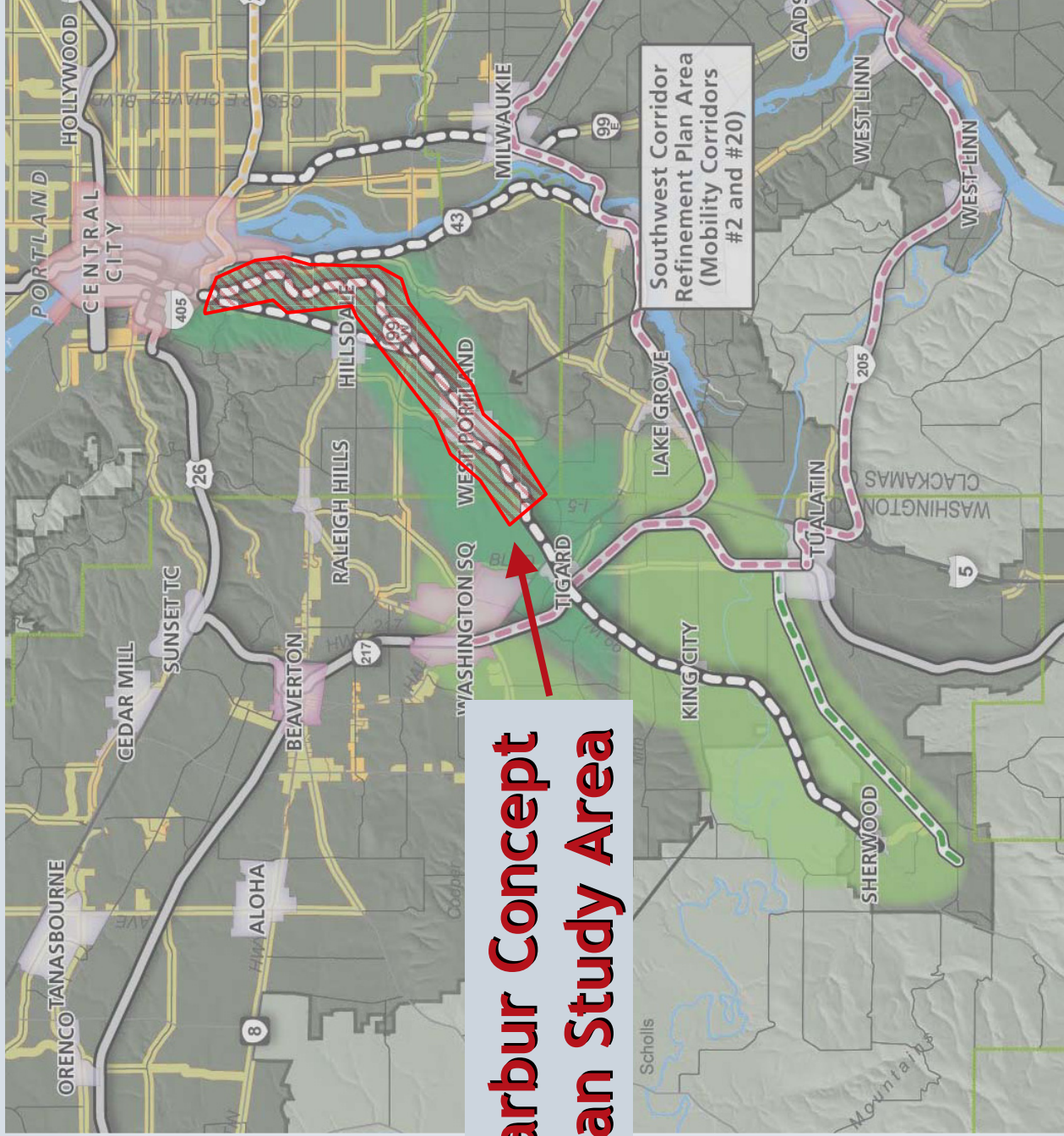
- limits reliability of bus service
- impedes workforce travel and the flow of goods for economic growth

Lacks 140 miles of sidewalks

- limits accessibility and opportunities for lower-income residents and non-driving residents







# Barbur Concept Plan Study Area



# Project Milestones

## Timeframe

## Milestones

## Public Events

July - Sept 2011

Existing conditions, needs, opportunities, constraints

Barbur neighborhood walks / open house #1

Oct 2011 - Apr 2012

Goals, criteria, and alternatives development

Open house #2

May - Sept 2012

Alternative analysis / investment strategies

Open house #3

Oct - Dec 2012

Plan development

Briefings with officials



# Community Engagement

- Community Working Group (CWG)
- Technical Advisory Group (TAG)
- Neighborhood walks in September
- Community forums at milestones
- Other tools (web site, focus groups)
- PSC involvement

# Comments/Questions

