

CITY OF PORTLAND AND MULTNOMAH COUNTY

# CLIMATE ACTION PLAN 2009

*Year 1 Progress Report*

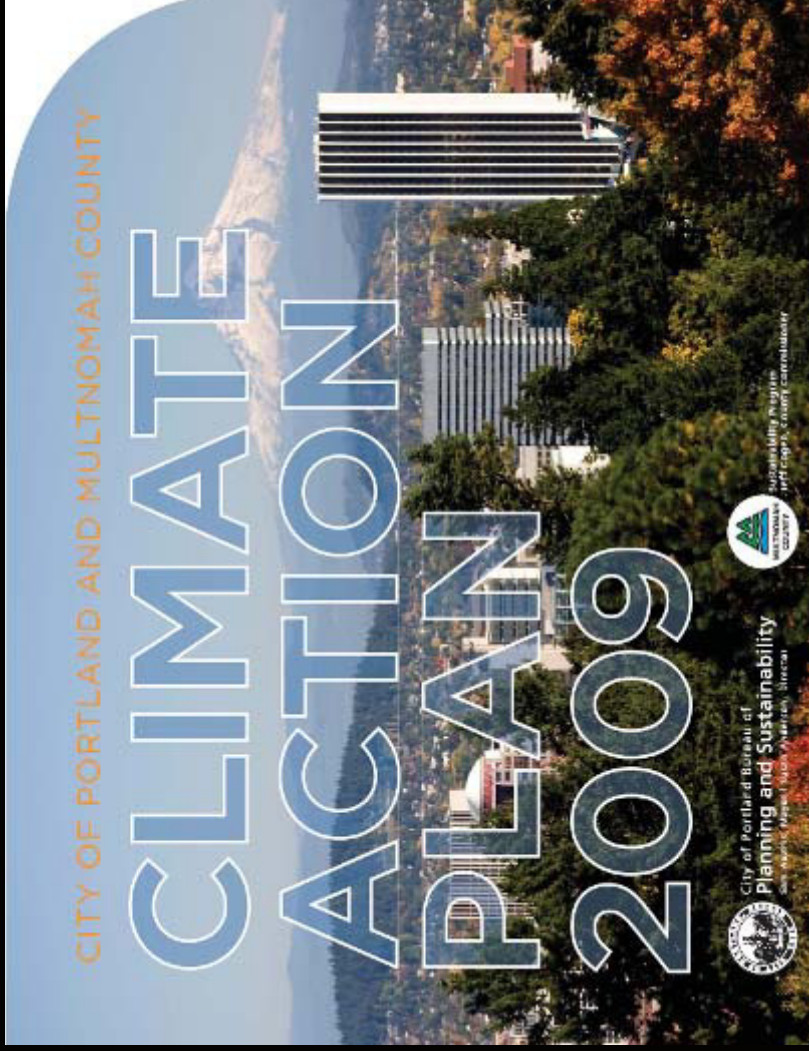


City of Portland Bureau of  
**Planning and Sustainability**  
Sam Adams, Mayor | Susan Anderson, Director



Sustainability Program  
Jeff Cogen, County Commissioner

# Climate Action Plan



**Builds on prior plans from 1993 and 2001**

**2050 Goal:**  
80% reduction in emissions

**2030 Interim goal:**  
40% reduction

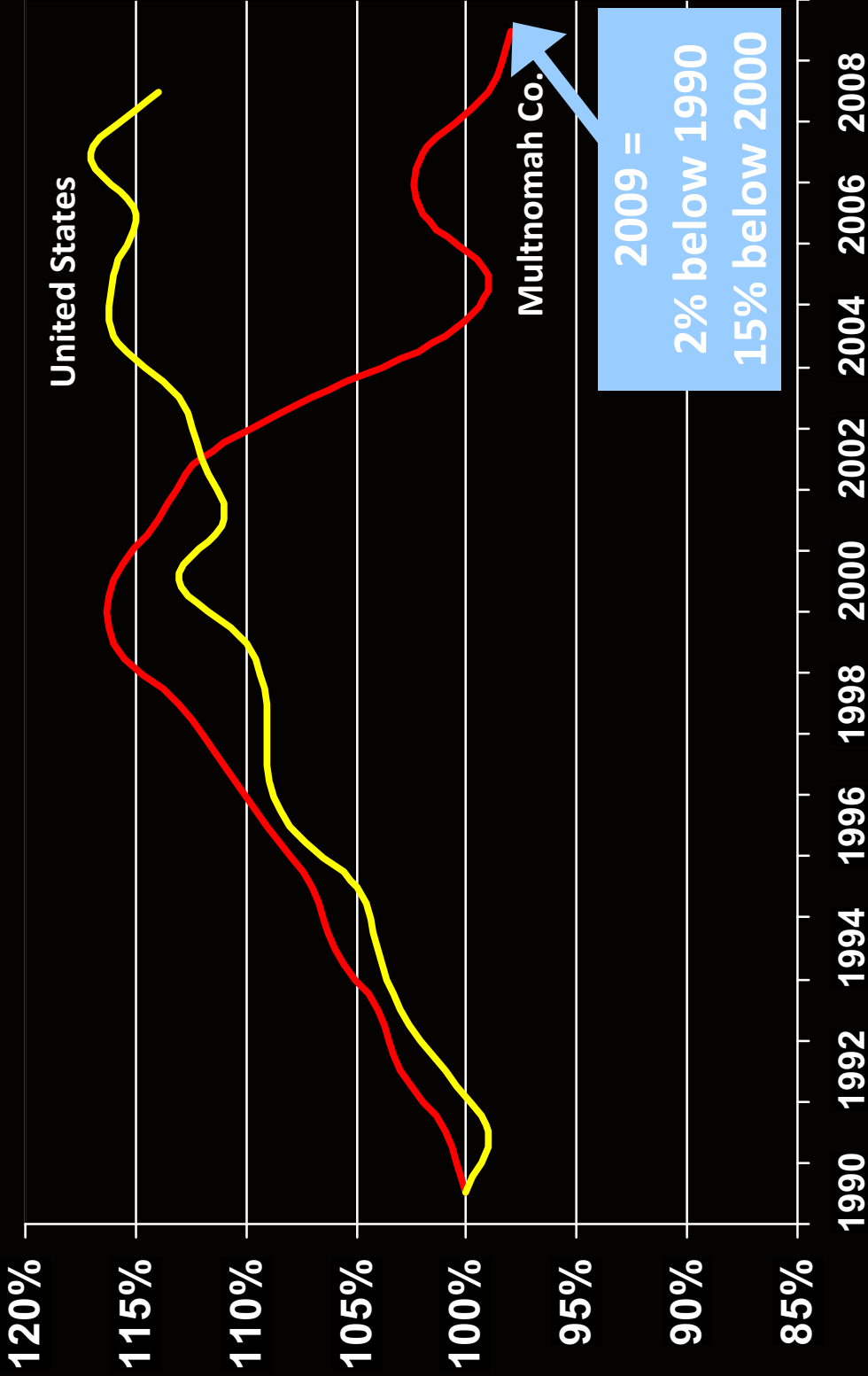
**2030 Objectives**

**2012 Actions**



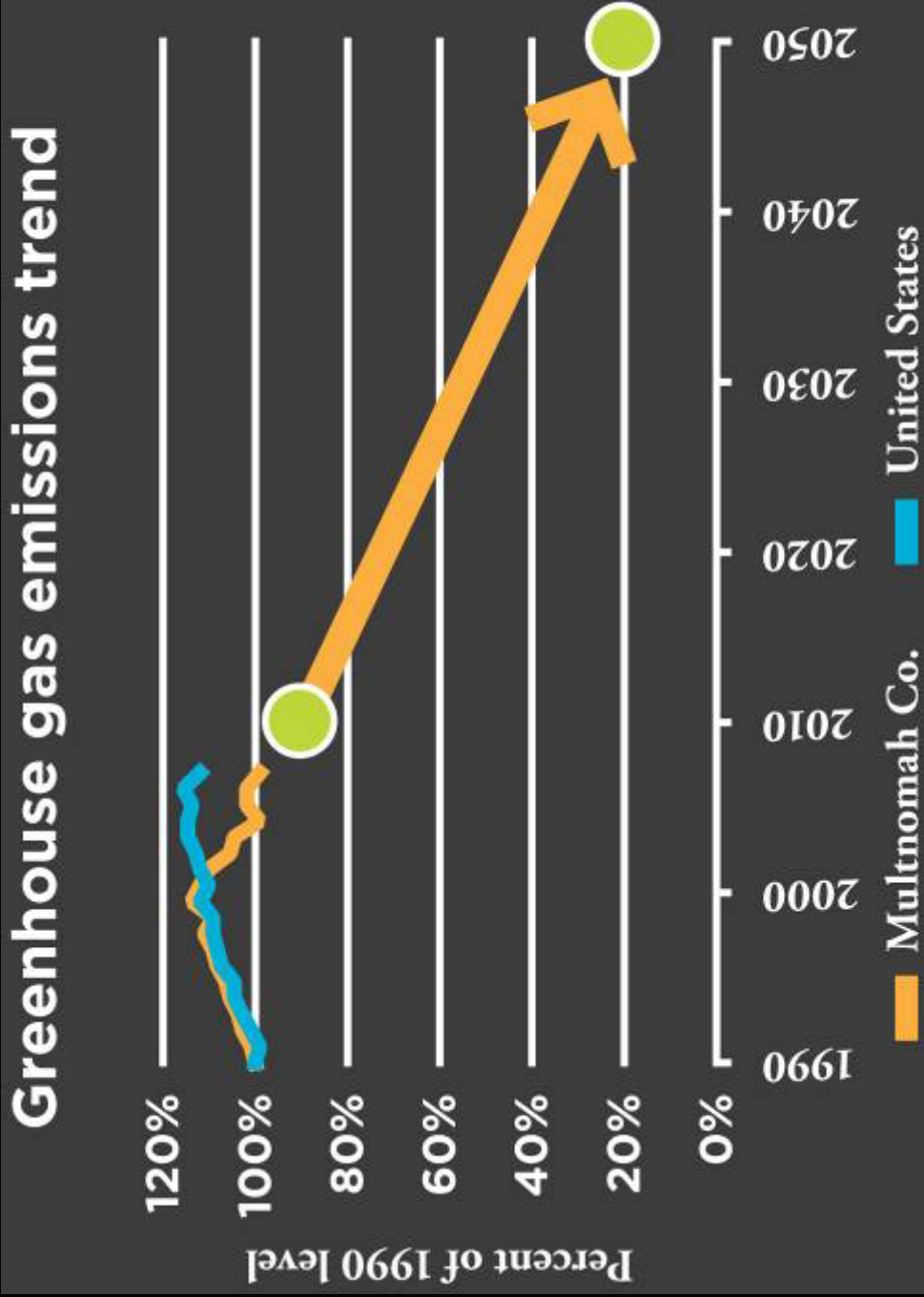
City of Portland Bureau of  
**Planning and Sustainability**  
Sam Adams, Mayor | Susan Anderson, Director

# Carbon emissions trends



City of Portland Bureau of  
**Planning and Sustainability**  
Sam Adams, Mayor | Susan Anderson, Director

# Challenges



City of Portland Bureau of  
**Planning and Sustainability**  
Sam Adams, Mayor | Susan Anderson, Director

# Eight Action Areas

1

BUILDINGS AND ENERGY

2

URBAN FORM AND MOBILITY

3

CONSUMPTION AND SOLID WASTE

4

URBAN FORESTRY AND NATURAL SYSTEMS

5

FOOD AND AGRICULTURE

6

COMMUNITY ENGAGEMENT

7

CLIMATE CHANGE PREPARATION

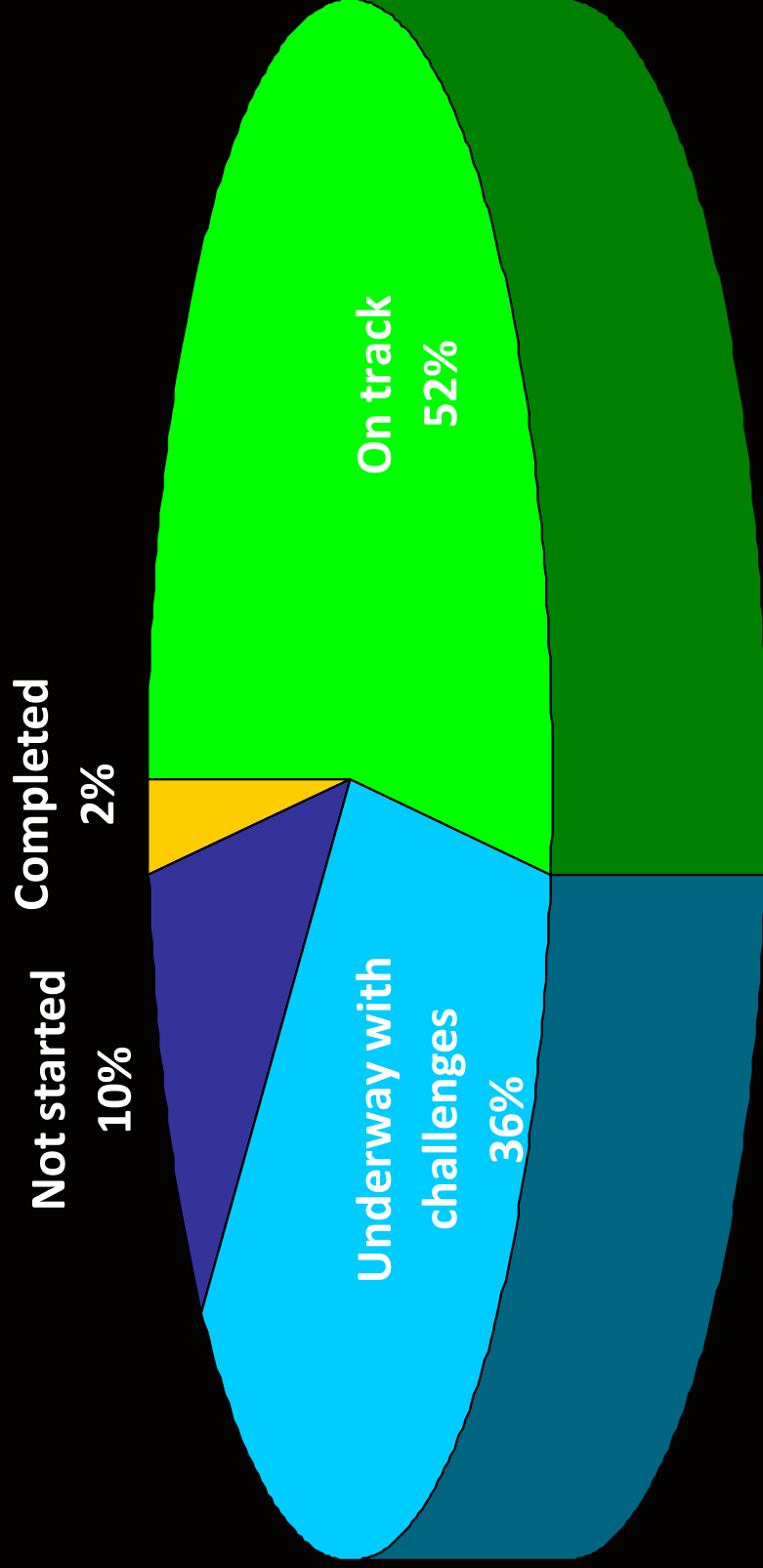
8

LOCAL GOVERNMENT OPERATIONS



City of Portland Bureau of  
**Planning and Sustainability**  
Sam Adams, Mayor | Susan Anderson, Director

# Status of Climate Action Plan actions October 2010



City of Portland Bureau of  
**Planning and Sustainability**  
Sam Adams, Mayor | Susan Anderson, Director



## BUILDINGS AND ENERGY

On track:

- Major energy retrofit effort: Clean Energy Works Portland
- Advocate for reducing coal in electricity supply
- On-site renewable energy such as solar

Still in development:

- Policy addressing existing commercial buildings
- New/expanded district energy systems



City of Portland Bureau of  
**Planning and Sustainability**  
Sam Adams, Mayor | Susan Anderson, Director

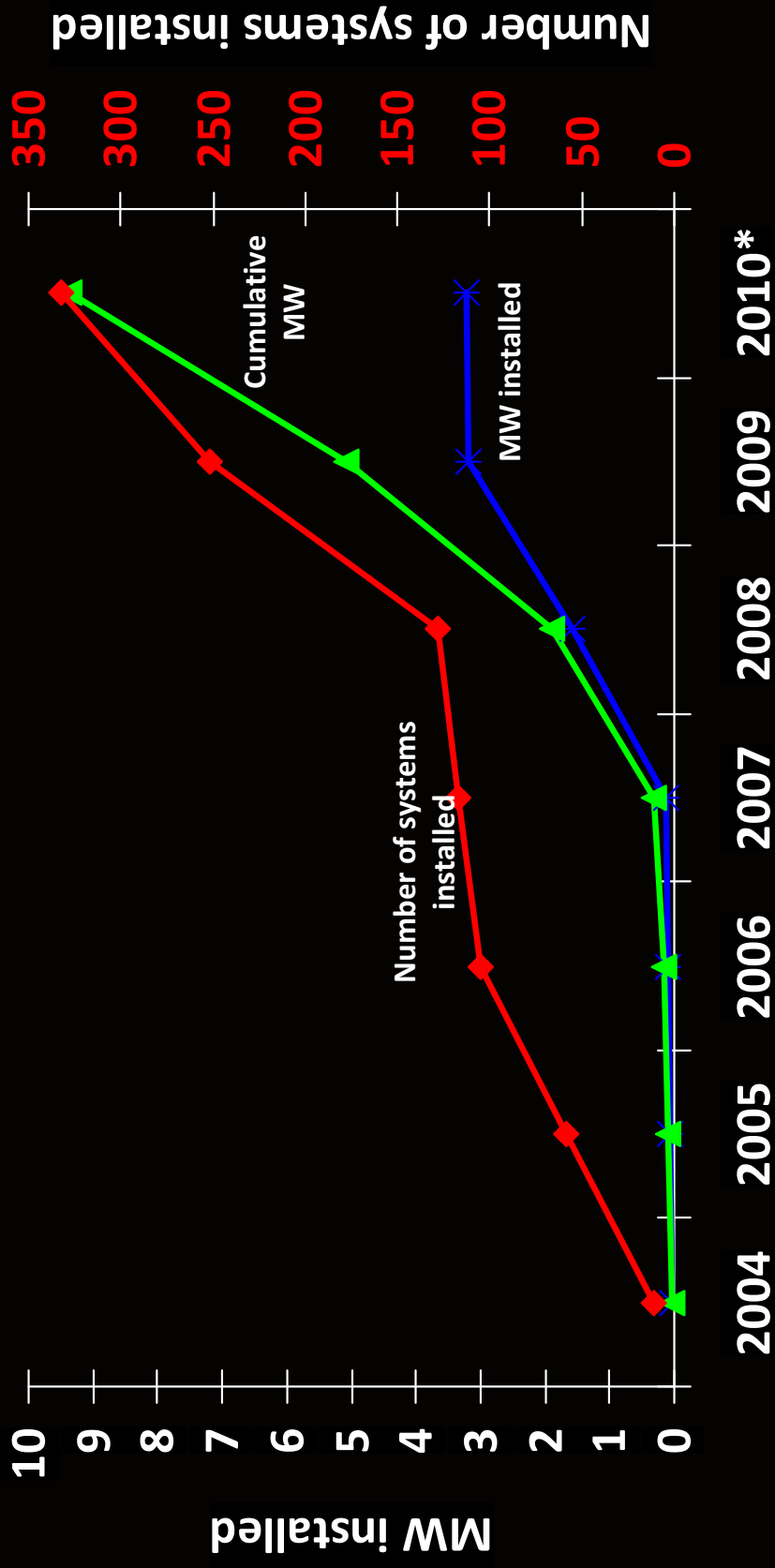
# Clean Energy Works

- Goal: \$50 million fund for energy retrofits
- To date have secured \$25 million; leverage is expected to reach \$100 million
- Based on current funding (next 3 years):
  - Total lifetime carbon savings = 540,000 metric tons
  - Total lifetime bill savings = \$125 million



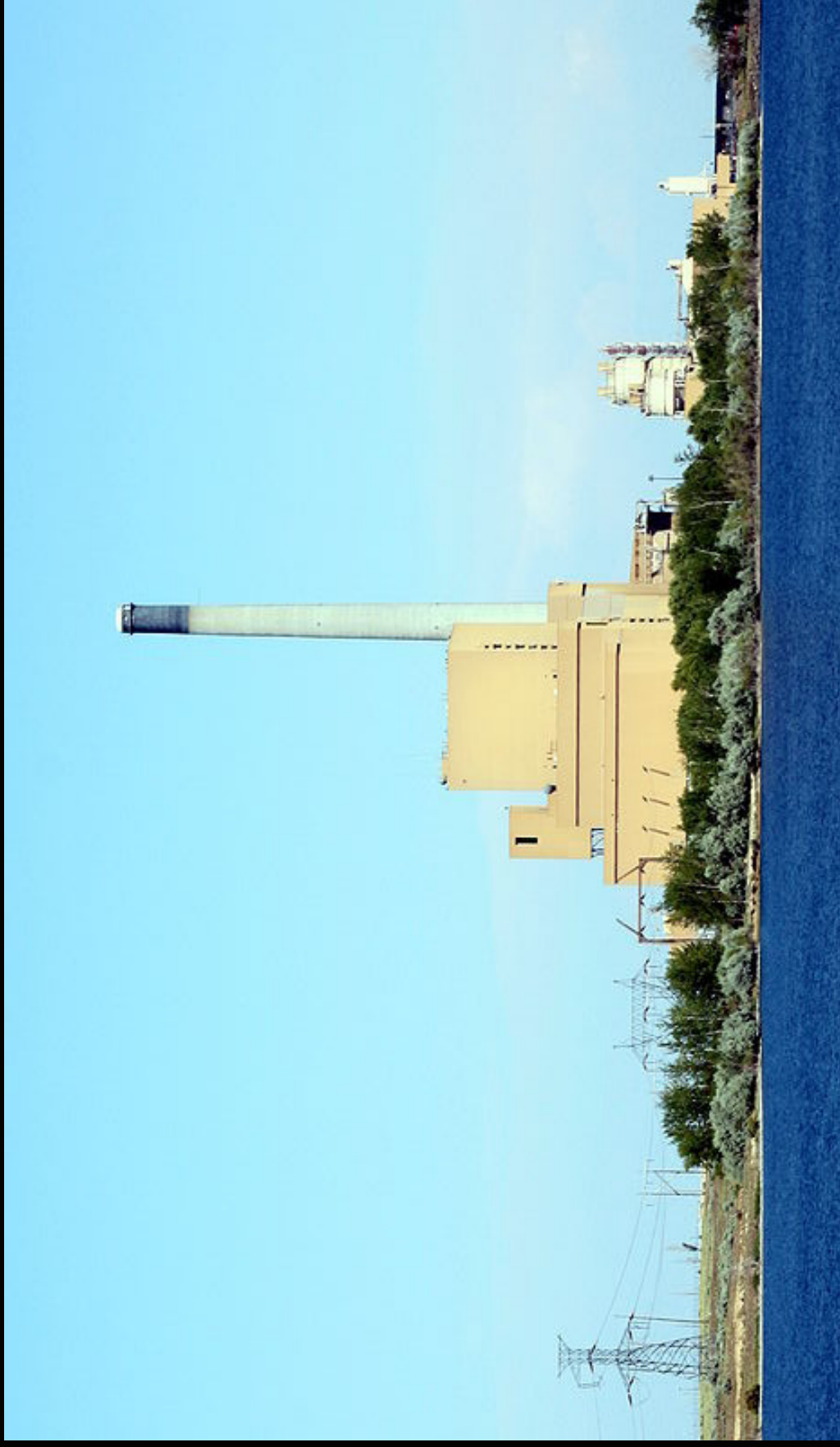


# Solar: 2012 goal = 10 MW installed



City of Portland Bureau of  
**Planning and Sustainability**  
Sam Adams, Mayor | Susan Anderson, Director

Coal: Boardman coal plant likely to close  
no later than 2020



# 2

## URBAN FORM AND MOBILITY



Establish sustainable source of funding for transportation to support:

- Next 3.3 miles of streetcar
- Bicycle Master Plan
- Sidewalk construction

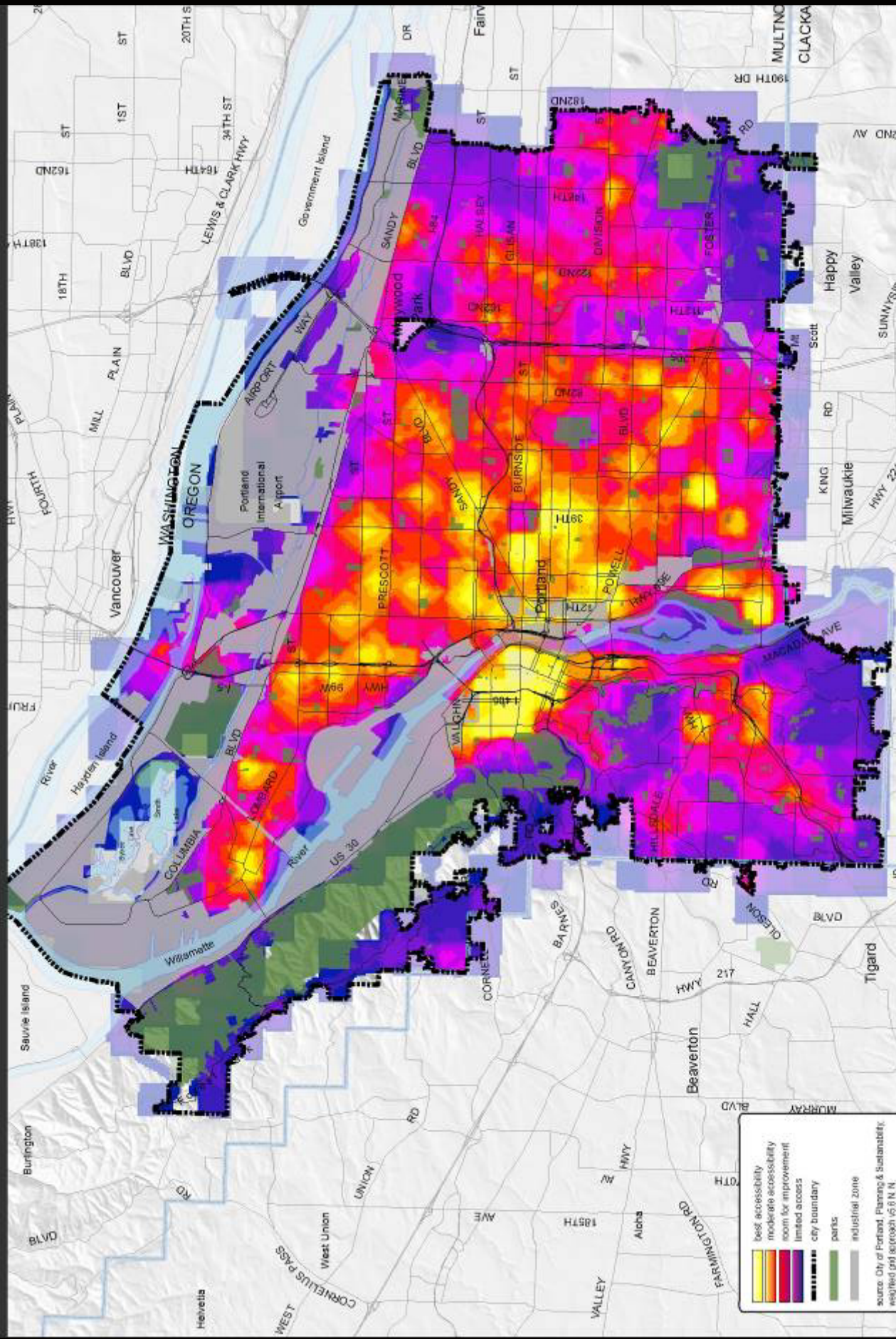


20-minute complete neighborhoods



City of Portland Bureau of  
**Planning and Sustainability**  
Sam Adams, Mayor | Susan Anderson, Director

# 20-minute neighborhood concept



September 10, 2009 **City of Portland | Bureau of Planning and Sustainability | Geographic Information System**  
 The information on the map was derived from digital data-bases on the City of Portland, Bureau of Planning and Sustainability GIS. Care was taken in the creation of this map but it is provided "as is". The City of Portland cannot accept any responsibility for error, omissions, or positional accuracy, and therefore, there are no warranties which accompany this product. However, notification of any errors will be appreciated.

- best accessibility
  - moderate accessibility
  - room for improvement
  - limited access
  - city boundary
  - parks
  - industrial zone
- source: City of Portland, Planning & Sustainability, revised grid approach v5.0 N.N.

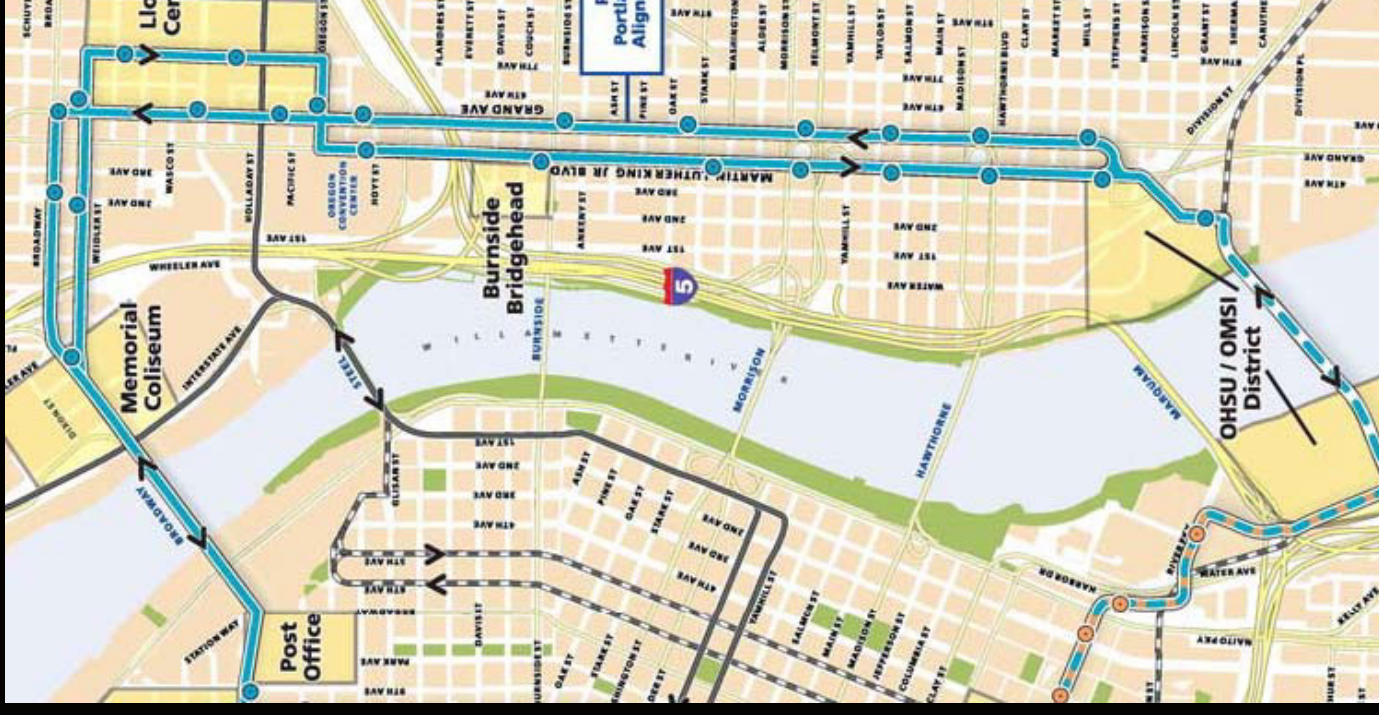
0 0.5 1 2 Miles  
 NORTH

# Portland Plan: Framework and strategic action



-  **arts & culture**  **connections & access**
-  **neighborhoods & housing**  **environmental health**
-  **educational opportunity**  **community design**
-  **civic life**  **human health**
-  **economic vitality**

# Eastside streetcar construction proceeding



City of Portland Bureau of  
**Planning and Sustainability**  
Sam Adams, Mayor | Susan Anderson, Director

# Bicycling

- Bicycle Master Plan adopted
- 15 miles of Neighborhood Greenways built



A healthy community, vibrant neighborhoods... *and bicycles everywhere!*

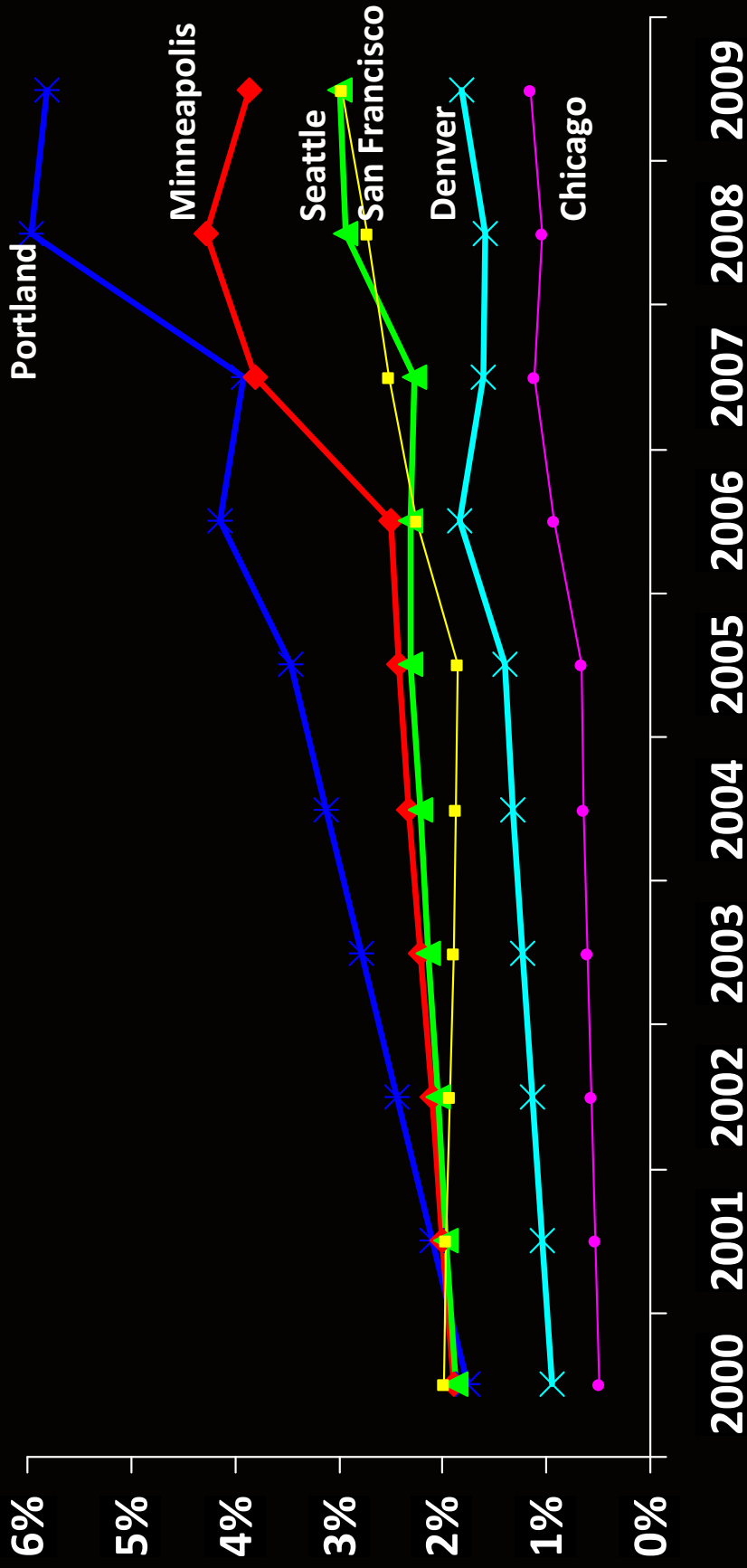


**PORTLAND BICYCLE PLAN FOR 2030**

**A WORLD-CLASS BICYCLING CITY**



# Percent commute by bicycle



Source: American Community Survey

City of Portland Bureau of  
**Planning and Sustainability**  
 Sam Adams, Mayor | Susan Anderson, Director





# City Council adopted EV Strategy July 2010

- Policies (permitting, parking, right of way)
- Incentives and outreach
- Economic development
- City Fleet
- Carshare and transit
- Partnerships



City of Portland Bureau of  
**Planning and Sustainability**  
Sam Adams, Mayor | Susan Anderson, Director

# 3

## CONSUMPTION AND SOLID WASTE

- Residential curbside food-waste pilot now underway
- Citywide roll-out in 2011



City of Portland Bureau of  
**Planning and Sustainability**  
Sam Adams, Mayor | Susan Anderson, Director



- Thoughtful consumption  
a key outreach message



City of Portland Bureau of  
**Planning and Sustainability**  
 Sam Adams, Mayor | Susan Anderson, Director

# 4

## URBAN FORESTRY AND NATURAL SYSTEMS



- Citywide tree project nearing completion
- 100,000 trees and shrubs planted in 09-10
- 169 new green street facilities completed in 09-10
- Challenges remain in establishing trees as capital investment



City of Portland Bureau of  
**Planning and Sustainability**  
Sam Adams, Mayor | Susan Anderson, Director



# FOOD AND AGRICULTURE

## Key actions:

- Zoning code project underway to address barriers to urban food production
- Food choice is a key component of public outreach

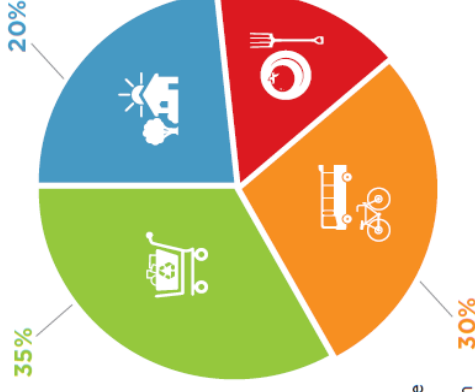
## TAKE ACTION TODAY!

### CLIMATE AND YOUR STUFF

**FACT:** About 35 percent of household carbon emissions come from the manufacturing, shipping and packaging of the stuff we buy; food adds another 16 percent.

### CLIMATE AND A HEALTHY HOME

**FACT:** The heating, cooling and powering of buildings is the single largest contributor to human-caused global warming, accounting for about a third of total carbon emissions. About 20 percent of all emissions come from our homes.



### CLIMATE AND GETTING AROUND

**FACT:** The transportation of people accounts for almost 30 percent of local carbon emissions in Multnomah County.

### CLIMATE AND FOOD CHOICES

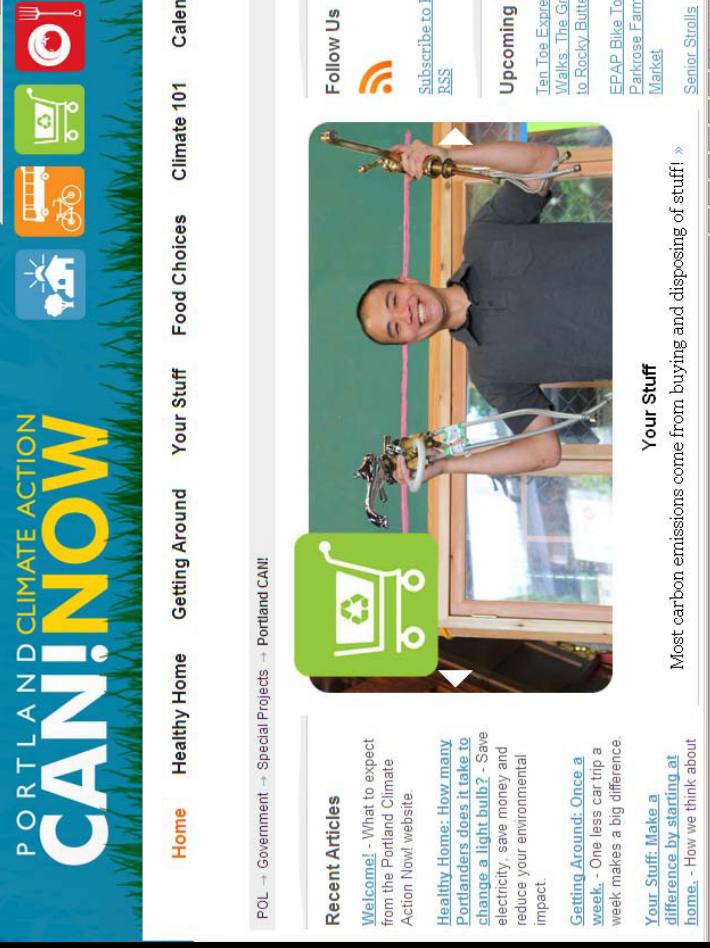
**FACT:** The global system for producing, distributing and landfiling of food accounts for at least 16 percent of household carbon emissions that cause global warming.



City of Portland Bureau of  
**Planning and Sustainability**  
Sam Adams, Mayor | Susan Anderson, Director



# COMMUNITY ENGAGEMENT



- Climate Action Now campaign launched to engage residents
- Continued coordination with government
  - Metro, State of Oregon
- Build on business leadership through Climate Prosperity Project



City of Portland Bureau of  
**Planning and Sustainability**  
Sam Adams, Mayor | Susan Anderson, Director

# 7

## CLIMATE CHANGE PREPARATION

- Water Bureau continues to be national leader in policy and analysis with Water Utility Climate Alliance
- Portland team participated in Climate Leadership Academy workshop in September
- Now in early stages of scoping a systematic assessment of vulnerabilities
- “Resilience” is emerging as one of four proposed principles in the Portland Plan

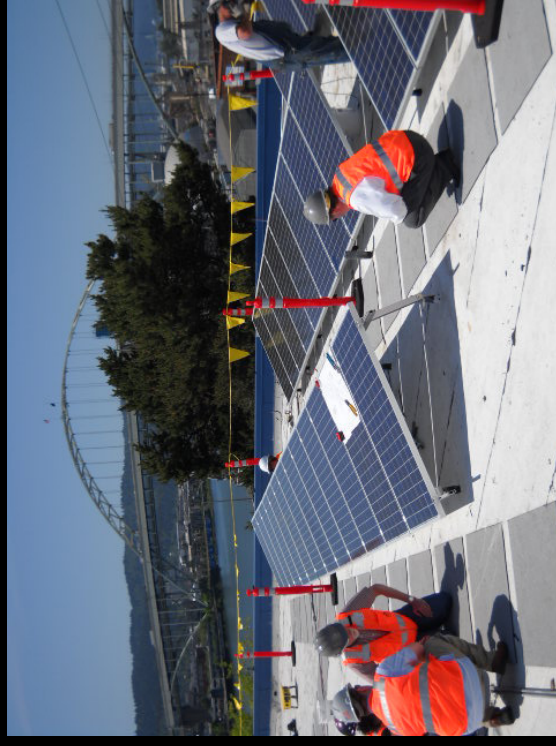


# 8

## LOCAL GOVERNMENT OPERATIONS

### Key actions:

- Convert to latest technologies:
  - 2<sup>nd</sup>-generation LED traffic signals installed
  - Now proceeding with new pilot of LED streetlights
- Renewable energy now 10% of City operations:
  - Biogas turbines at wastewater treatment plant
  - Solar installations on City buildings
- Energy retrofits:
  - Lighting retrofits at three community centers
  - Replacement windows at Peninsula Park





# Key actions for 2011

- Portland Plan
- Building energy policy
- Assess climate vulnerabilities and develop adaptation plan
- Progress on sustainable funding for transportation



City of Portland Bureau of  
**Planning and Sustainability**  
Sam Adams, Mayor | Susan Anderson, Director

# Portland Plan: Framework and strategic action



-  **arts & culture**  **connections & access**
-  **neighborhoods & housing**  **environmental health**
-  **educational opportunity**  **community design**
-  **civic life**  **human health**
-  **economic vitality**

A scenic view of the Portland, Oregon waterfront. The foreground shows a clear blue sky with several birds in flight. The middle ground features a body of water with a bridge and buildings. The background shows a cityscape with mountains in the distance.

[www.portlandonline.com/bps/climate](http://www.portlandonline.com/bps/climate)

*Michael Armstrong*      *michael.armstrong@portlandoregon.gov*  
*Portland Bureau of Planning and Sustainability*      *503.823.6053*