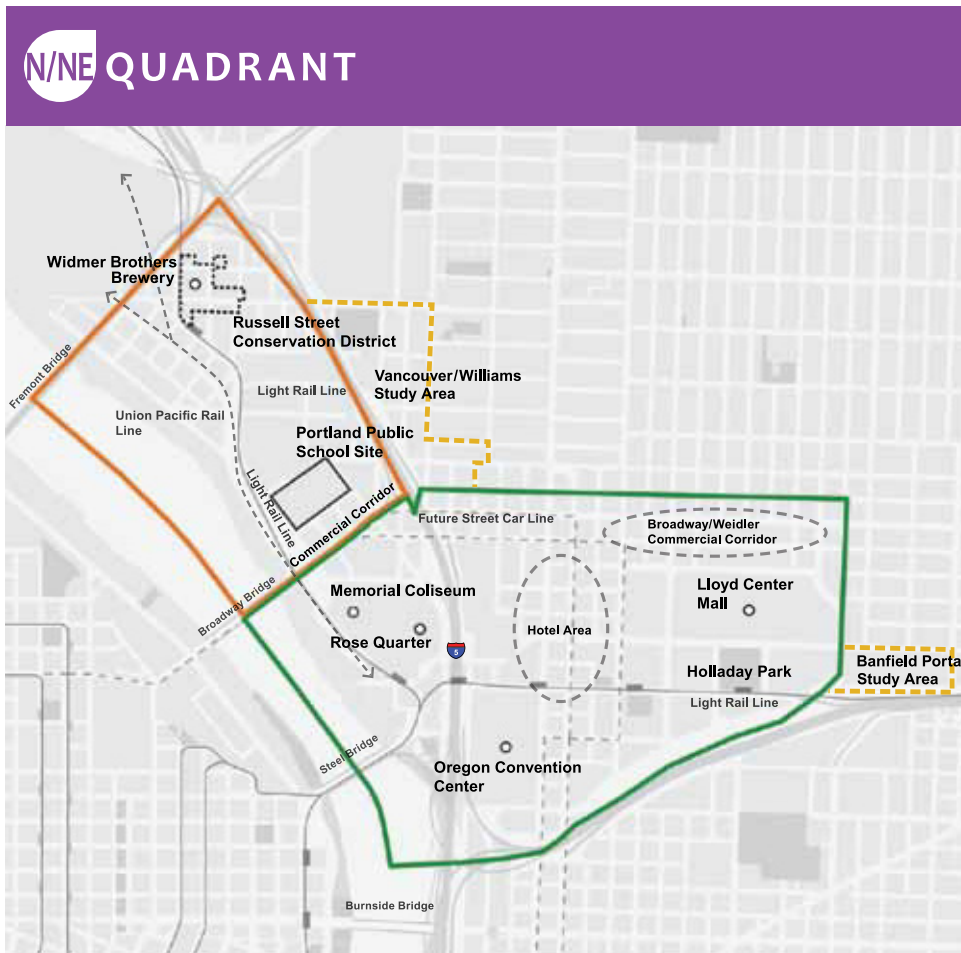
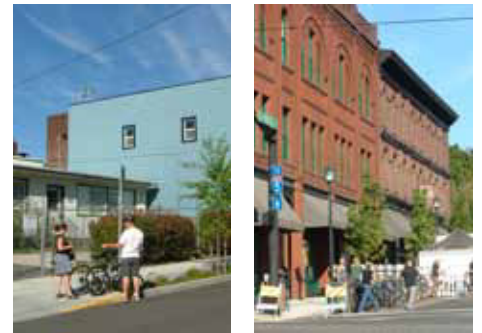


N/NE Quadrant and I-5 Broadway/Weidler Plans

The N/NE Quadrant and I-5 Broadway/Weidler Plans will act as a quadrant-level guide for implementation of city-wide goals to ensure a vibrant Central City at the heart of the metropolitan region. The project is a unique collaboration between the City of Portland and the Oregon Department of Transportation, to jointly develop a land use plan and plan for the I-5 Freeway in the vicinity of the Broadway/Weidler Interchange in a mutually beneficial way.

The N/NE Quadrant is a dynamic area with exciting potential that contains several facilities of state-wide and regional significance, including the Rose Garden, Oregon Convention Center, Lloyd Center Shopping Mall, Willamette Riverfront and freeway interchanges. This project will address challenges and opportunities related to land use, urban design, the Willamette River and multimodal transportation infrastructure. In addressing these challenges, the N/NE Quadrant Project will guide investment supporting the realization of this area's potential related to economic development, housing, the riverfront, entertainment, sustainability and mobility.



PROJECT WEBSITE:
WWW.PORTLANDONLINE.COM/BPS/CC2035/NNEQ

EMAIL:
NNEQUADRANT@PORTLANDOREGON.GOV

CALL: 503-823-7700

CONTACT:

KARL LISLE, BPS
KARL.LISLE@PORTLANDOREGON.GOV
503-823-4286

MAURICIO LECLERC, PBOT
MAURICIO.LECLERC@PORTLANDOREGON.GOV
503-823-7808

TODD JUHASZ, ODOT
TODD.JUHASZ@ODOT.STATE.OR.US
503-731-4753



City of Portland Bureau of
Planning and Sustainability
Sam Adams, Mayor | Susan Anderson, Director



OCTOBER 11, 2010

The N/NE Quadrant Project will address issues related to ...



PROJECT TIMELINE						
September 2010	Fall 2010	Winter 2010	Spring 2011	Summer 2011	Fall 2011	Winter 2012
Project Start-up	Background and Existing Conditions	Issues, Opportunities and Constraints	Concept Alternative	Preferred Concept	Recommended Quadrant Plan and Freeway Concepts	Legislative Hearings and Adoption