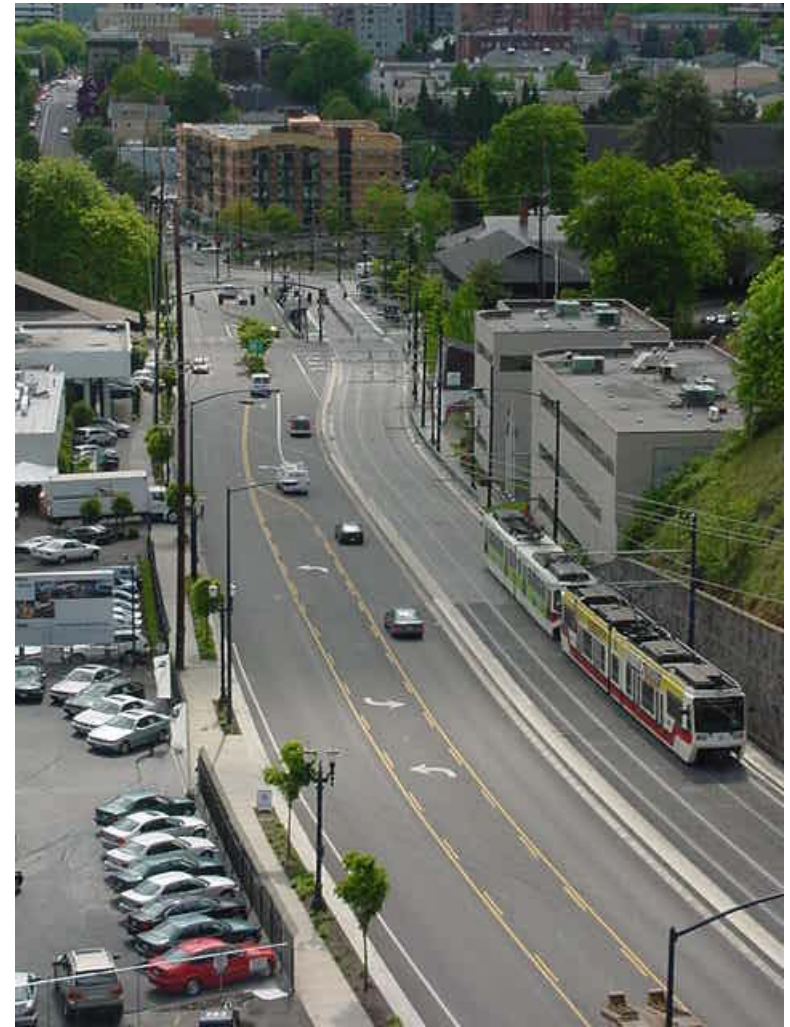


Watershed Management in Portland



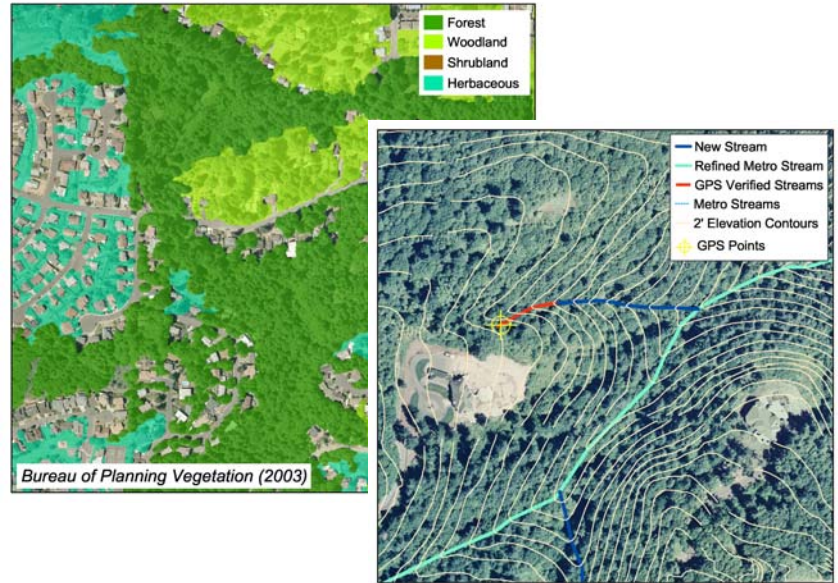
Watershed Health Goals



- Stream flow and hydrology
- Physical habitat
- Water quality
- Biological communities

The Watershed Plan provides context for other City programs

- Plan strategies rely on natural area acquisition, management and protection through zoning
- The plan integrates baseline information from other bureaus
- The City's Natural Resource Team (NRT) functions as a multi-bureau advisory and coordination group



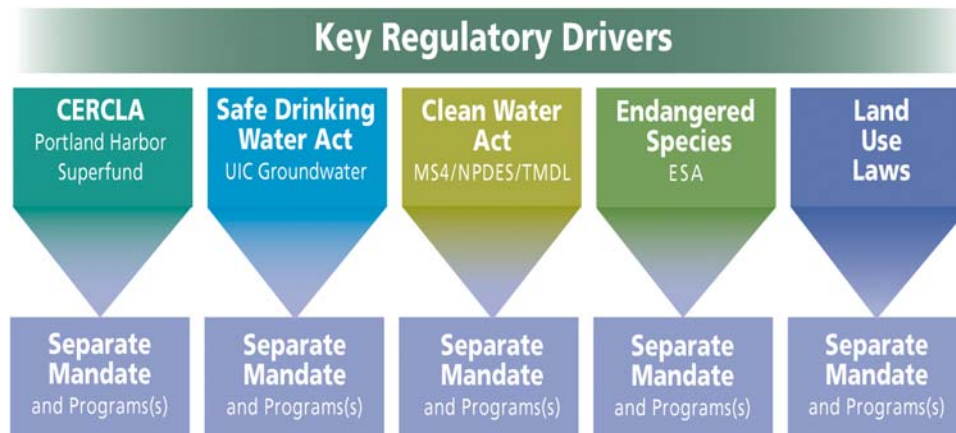
Bureau of Planning habitat inventories and environmental zoning inform and guide Watershed Plan strategies



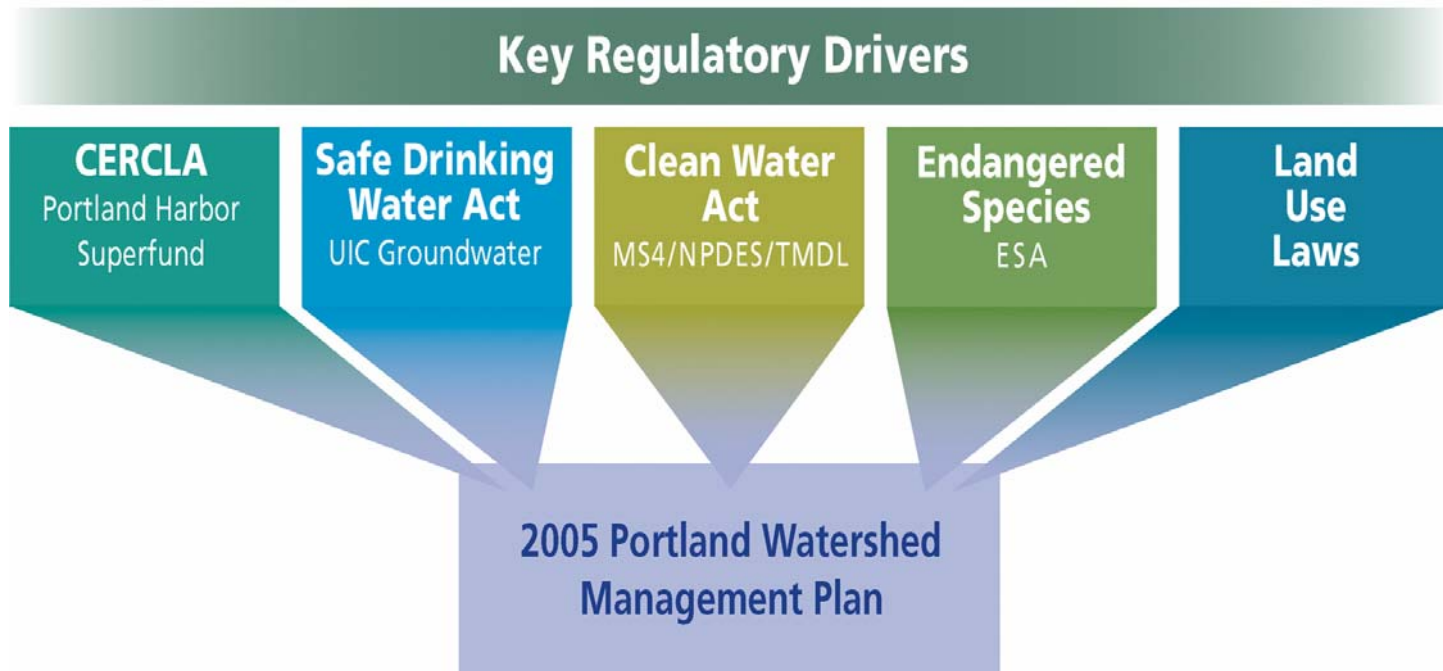
Parks natural area acquisition and management programs support Management Plan goals

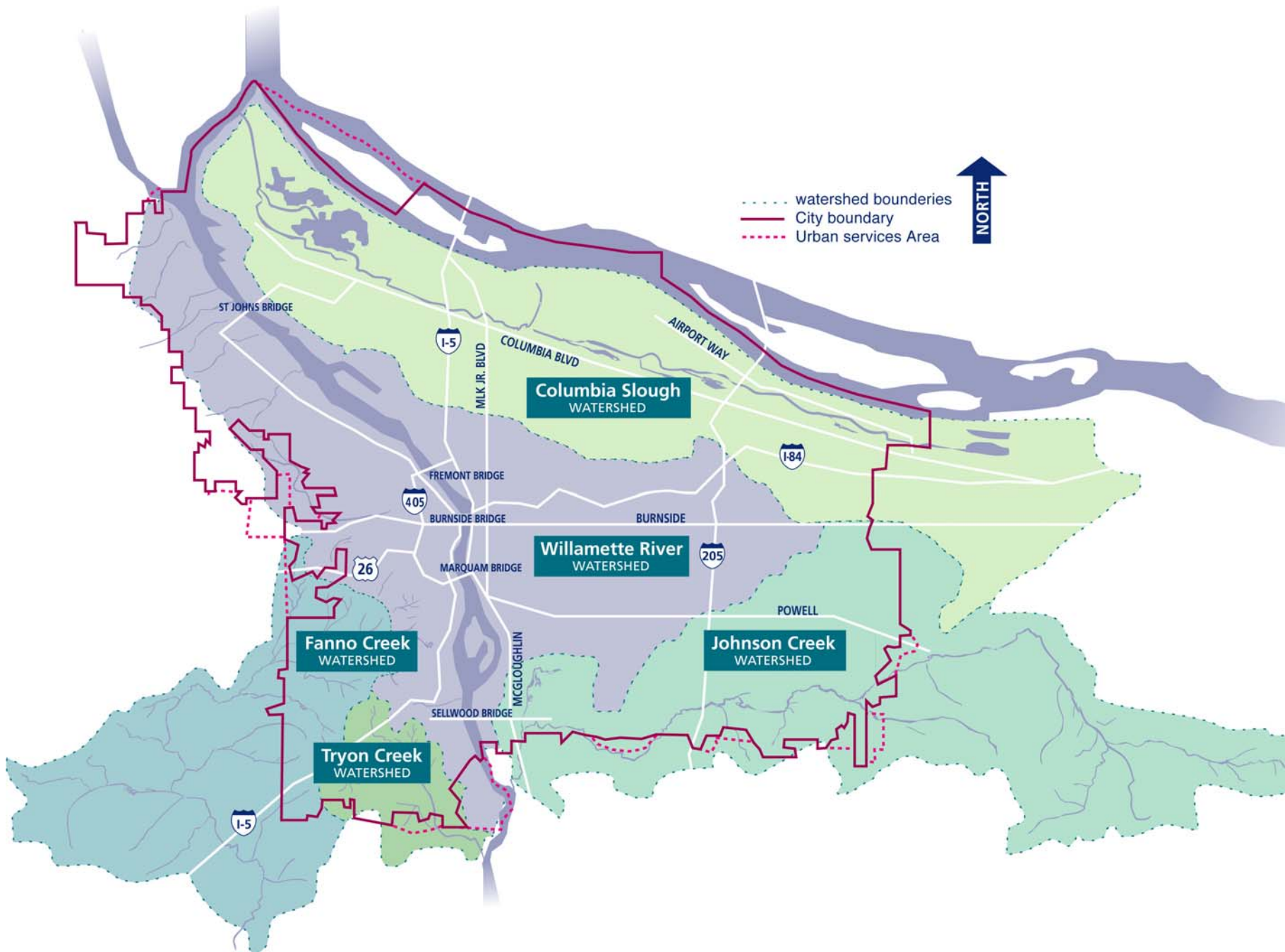
Moving our work out of Silos

Traditional Approach



Integrated Approach to Meeting Regulatory Mandates





- watershed boundaries
- City boundary
- Urban services Area



ST JOHNS BRIDGE

I-5

MILK JR. BLVD

COLUMBIA BLVD

AIRPORT WAY

Columbia Slough
WATERSHED

I-84

405

FREMONT BRIDGE

BURNSIDE BRIDGE

BURNSIDE

I-205

Willamette River
WATERSHED

26

MARQUAM BRIDGE

POWELL

Fanno Creek
WATERSHED

Johnson Creek
WATERSHED





MCGOUGHLIN

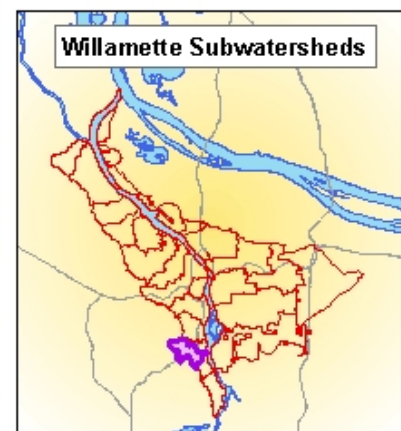
SELLWOOD BRIDGE

Tryon Creek
WATERSHED

I-5

Figure 7
Stephens
Improvement Strategies
Concept Plan
Legend

-  Willamette Subwatersheds
-  Open Channel
-  Roadside Ditch
-  Water Body
-  Stormwater Pipe or Culvert
-  Combined Stormwater/Sewer Pipe
- Project Type**
-  Maintenance
-  Outreach
-  Protection and Policy
-  Revegetation
-  Stormwater
-  Stream Enhancement
-  Taxlots



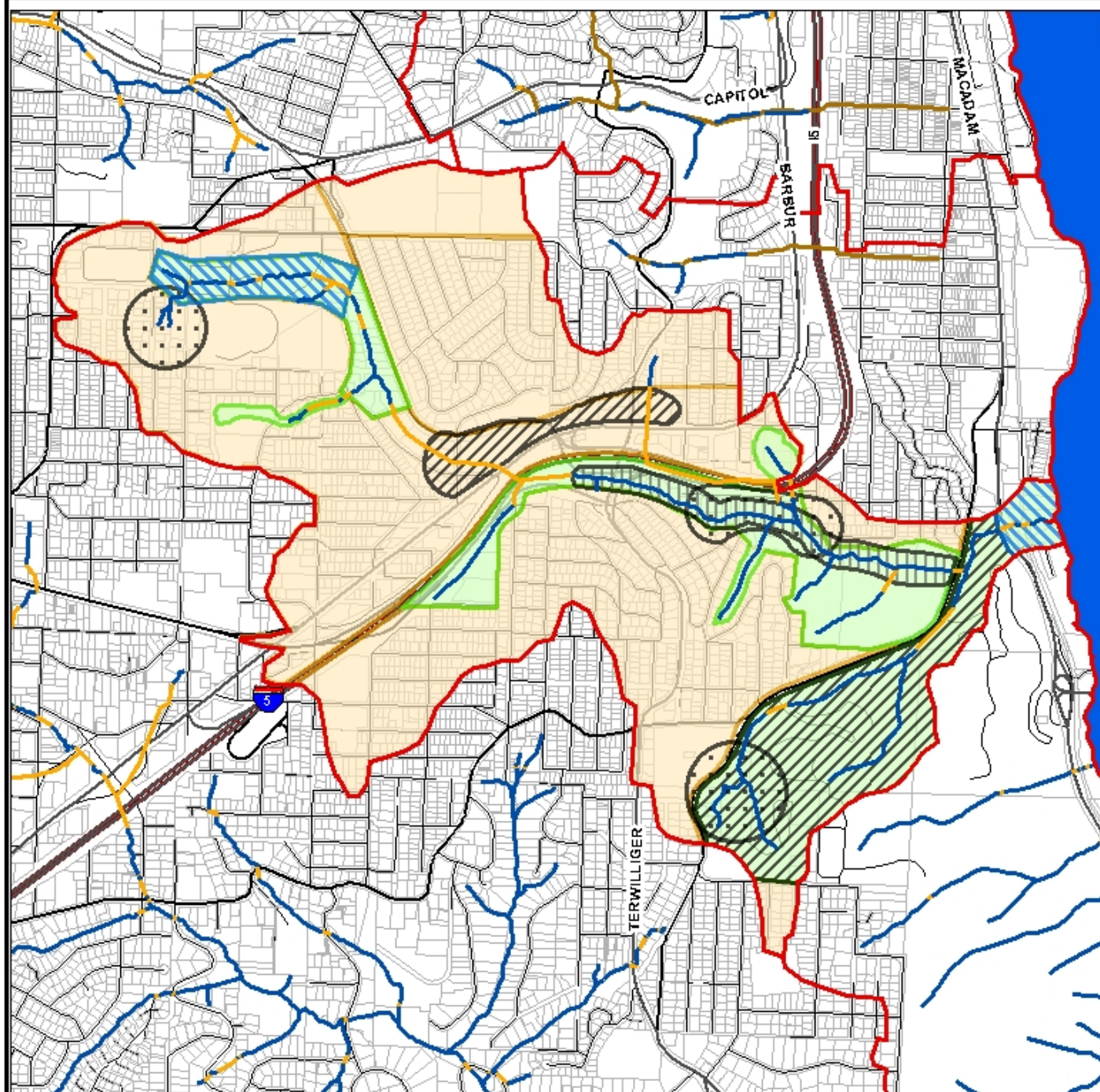
N



0 0.25 0.5

Miles

June 2004

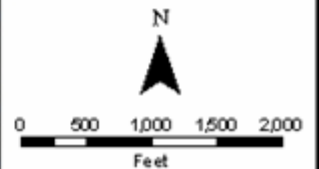


Stephens Subwatershed 2003 Aerial Photo

Legend

- Subwatershed Boundary
- City of Portland
- Neighborhoods
- Open Channel
- Culvert

Data Sources:
Subwatersheds - BES
Streams - City of Portland,
Bureau of Planning
Neighborhoods - City of
Portland, Office of
Neighborhood Involvement
Aerials - City of Portland

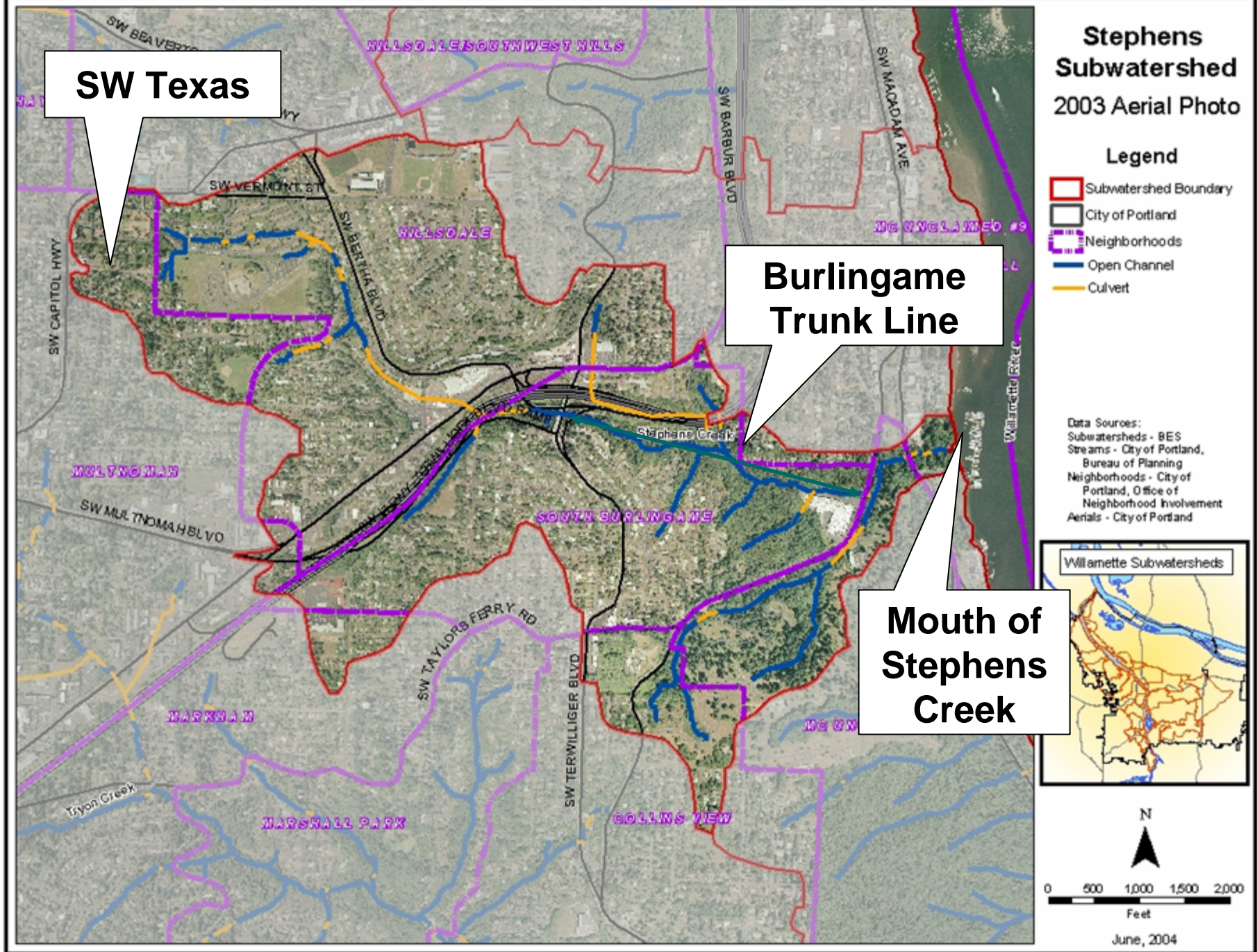


June, 2004

SW Texas

Burlingame
Trunk Line

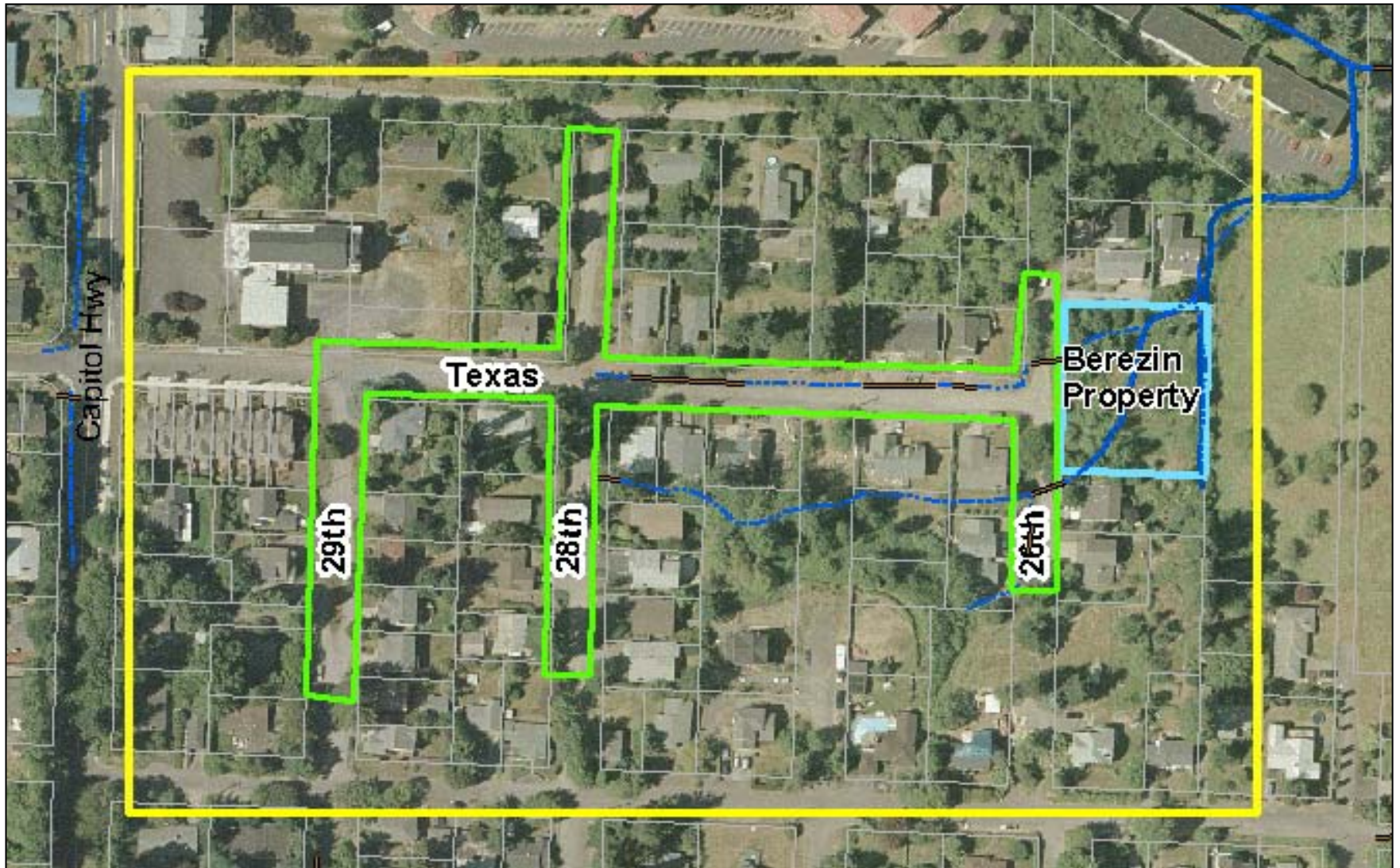
Mouth of
Stephens
Creek



SW Texas and 28th Ave looking east



SW Texas Project Area and wetland property acquisition



Burlingame Trunk Sanitary line exposed with channel erosion



Stephens Creek/Willamette Confluence



Oregon Department of Fish and Wildlife rated the mouth of Stephens Creek among the most valuable habitat areas in the City.

How the Watershed Plan was Constructed

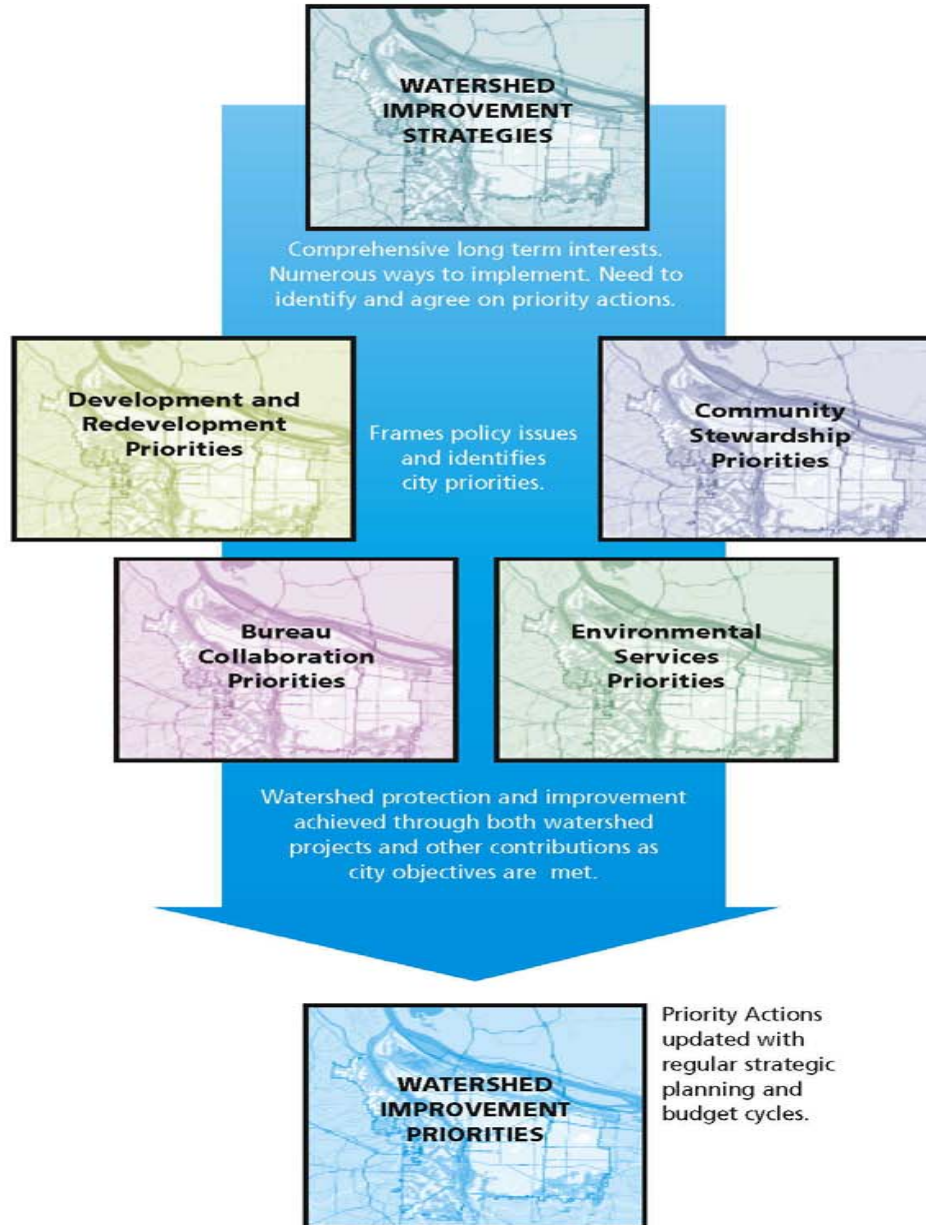


- Watershed Science Advisory Group, est. 2/04
 - Tribes, Feds, State, local gov'ts., Watershed Councils, Industry, Advocacy Groups, Other City Bureaus
- Stormwater Advisory Group
- City Bureau Directors, Council and Mayor

Watershed Improvement Strategies

- **Stormwater Management**
 - Vegetated swales
 - Ecoroofs
 - Ponds
- **Revegetation**
 - Removal of Invasives
 - Plant trees and other vegetative cover
- **Protection and Policy**
 - Manage erosion and pollutant discharge
 - Manage stormwater in new and redevelopment projects
 - Manage pollutant discharges
 - Protect sites with high watershed value
- **Aquatic and Terrestrial Enhancement**
 - Restore river and stream beds
 - Restore River Channels
- **Operation and Maintenance**
 - Maintain City infrastructure and facilities to enhance watershed health
 - Reduce non-stormwater discharges
 - Maintain and repair sewer system
- **Education, Involvement, and Stewardship**
 - Help City employees understand impacts of their work on watershed health
 - Show Portland residents and businesses how they can promote healthy watersheds
 - Increase community interest in volunteer activities that promote watershed health










Portland Watershed Improvement Priorities



Portland Watershed Management Plan

Watershed Priority Areas

Legend

-  City of Portland
-  Urban Services Boundary
-  Urban Services Area outside Portland
-  Major Waterbodies
-  Watershed Boundary
-  Major Arterials
-  Streams
-  Priority Areas
-  Freight Hub Districts*

*For non-City of Portland activities and development within freight hub districts, all strategies suggested by the Plan are voluntary and will be refined over time. Existing regulations will continue to apply.

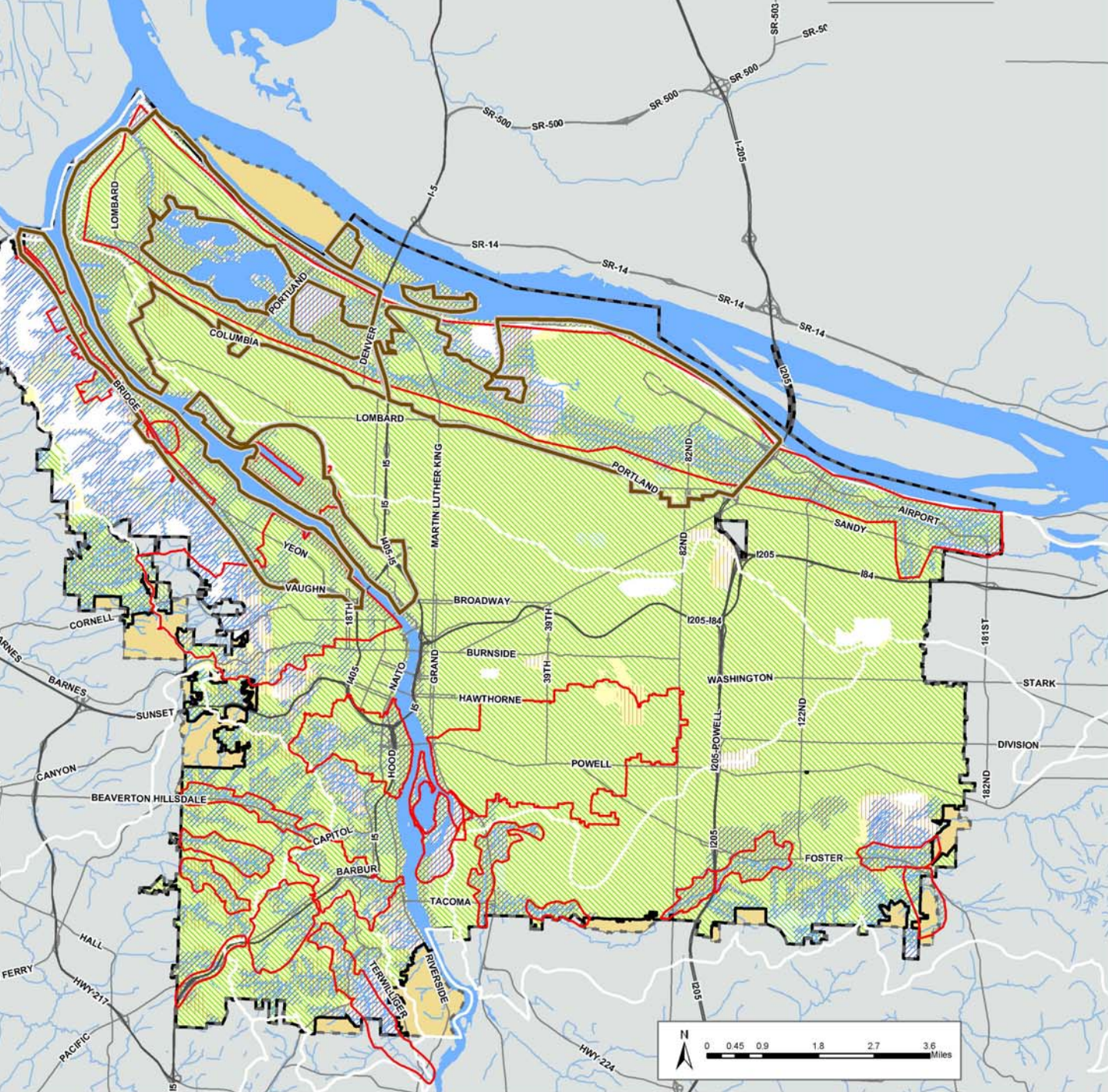
Strategy Categories

-  Stormwater
-  Revegetation
-  Aquatic and Terrestrial Enhancement
-  Protect Sites with High Watershed Value

The following strategy categories apply everywhere:

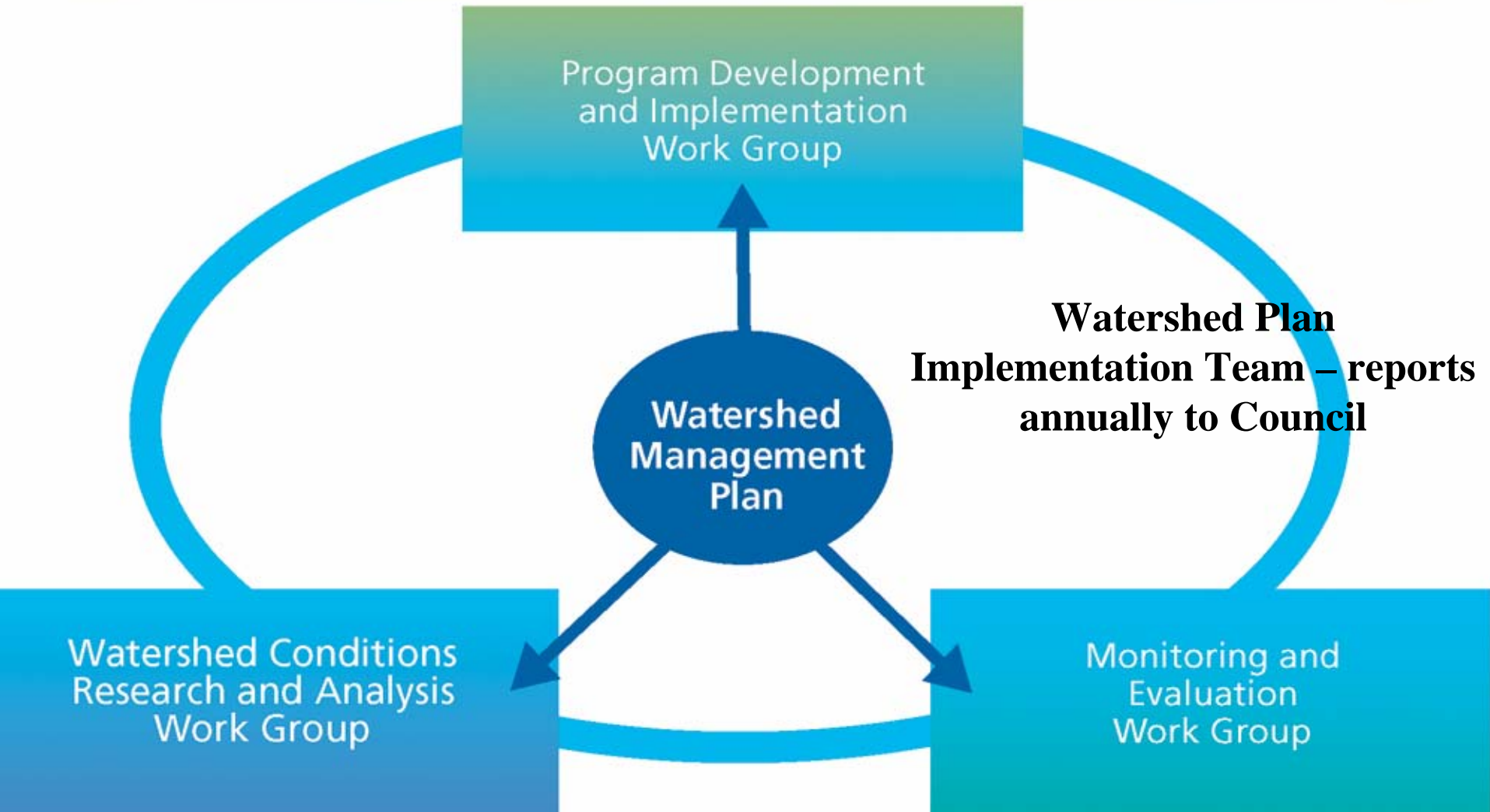
- Education
- Policy
- Operations and Maintenance

This map is based on the integration of the Watershed Improvement Strategies Map with the Implementation Opportunities Maps. The Watershed Priority Areas Map highlights areas where efforts could be effectively and efficiently focused over the next 2-5 years to improve watershed health. The information displayed on this map is dependent on many variables and will be refined over time. Please refer to TM 5.X for supporting technical documentation.



Environmental Services - Watershed Services Work Groups

Ongoing collaboration with other City Bureaus



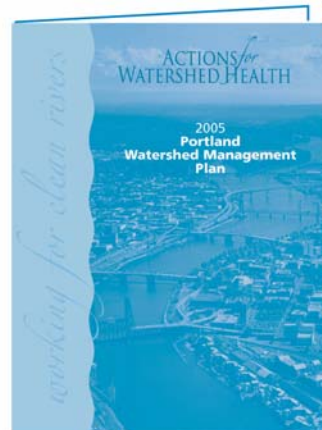
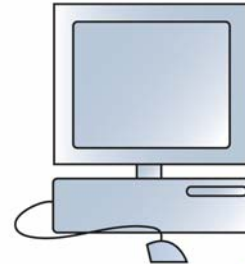
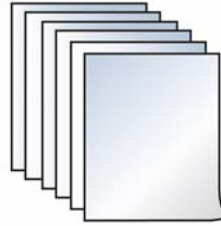
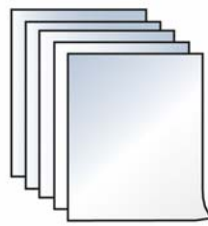
2005 Portland Watershed Management Plan

TECHNICAL APPENDICES

- Framework
- Characteristics
- Objectives and Measures
- Existing Watershed Plans

- Technical Memorandums

- Website
- Actions Database



ACTIONS

- Introduction and Background
- What We Know About Watersheds
- Watershed Improvement Strategies
- Path Forward

Update every 5 years

2005 Watershed Annual Report

REPORT

- Performance Measures
- 2004-05 Achievements
- Upcoming Implementation Priorities

Update every year