

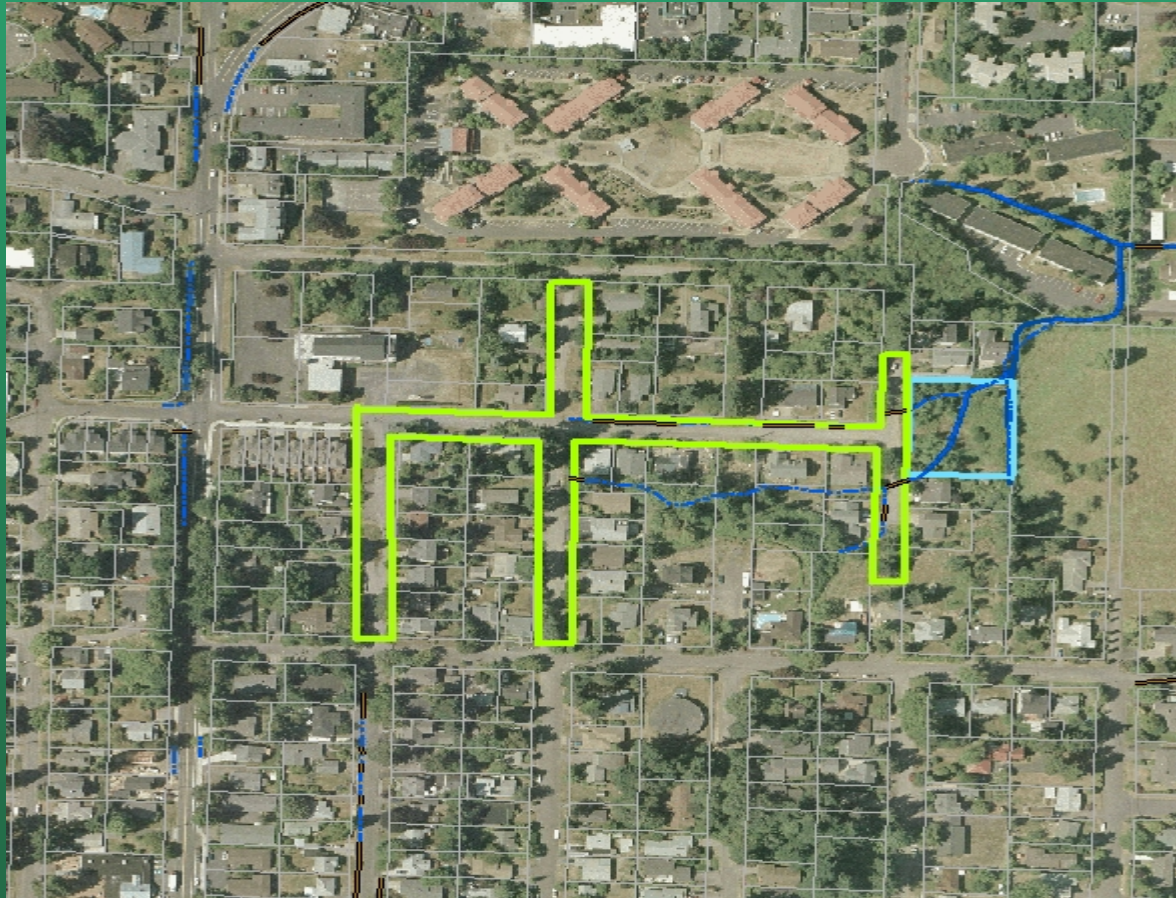
SW TEXAS GREEN STREET
Local Improvement District
Resolution of Intent Hearing

March 2, 2005

Andrew Aebi - Portland Office of Transportation
Carolyn Sharp - Bureau of Environmental Services
Dan Vizzini - Bureau of Environmental Services

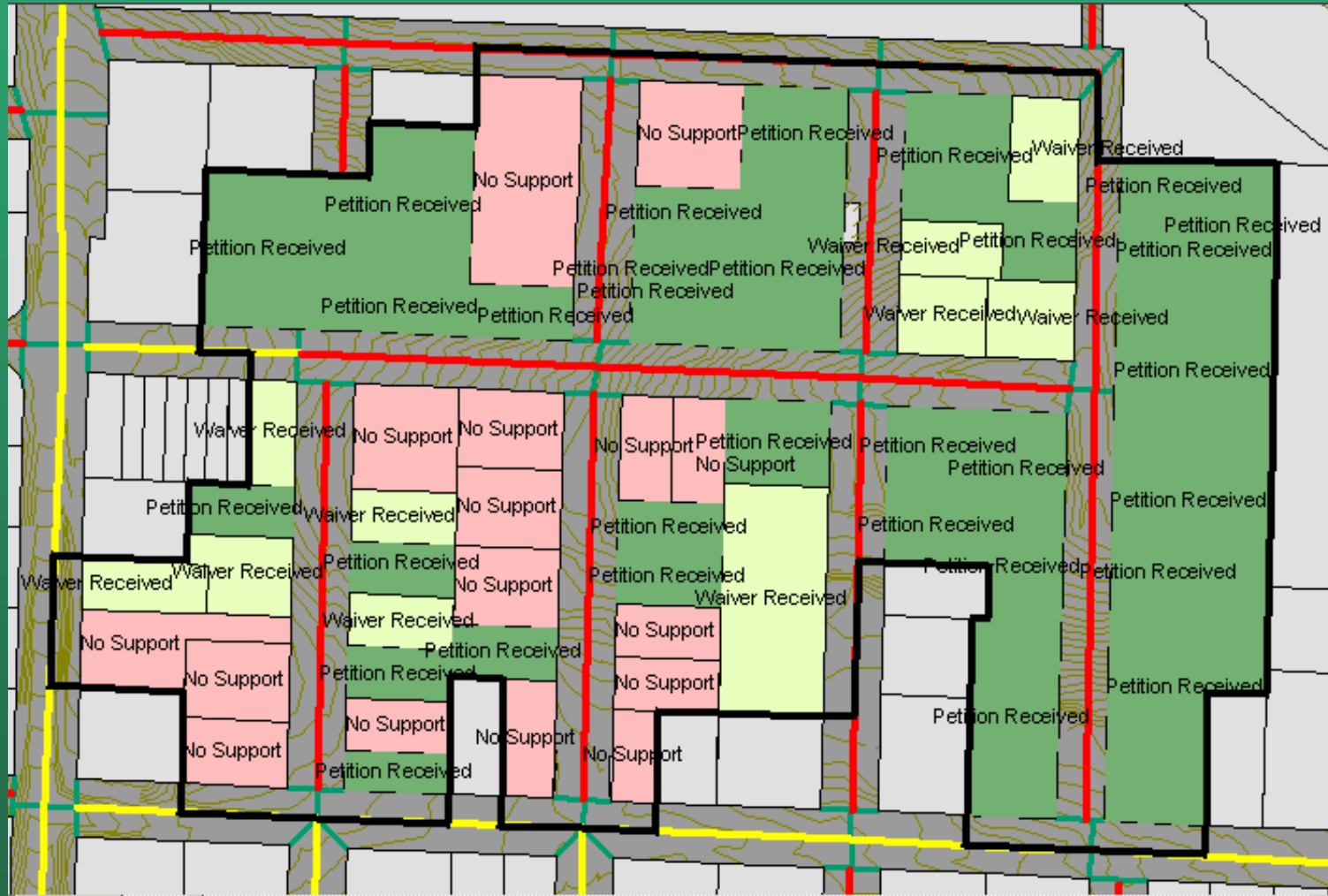
SW Texas Green Street LID Resolution of Intent Hearing

Proposed Street Improvements & Stormwater Treatment Facility



SW Texas Green Street LID Resolution of Intent Hearing

LID Map and Petition Support



Watershed Goals

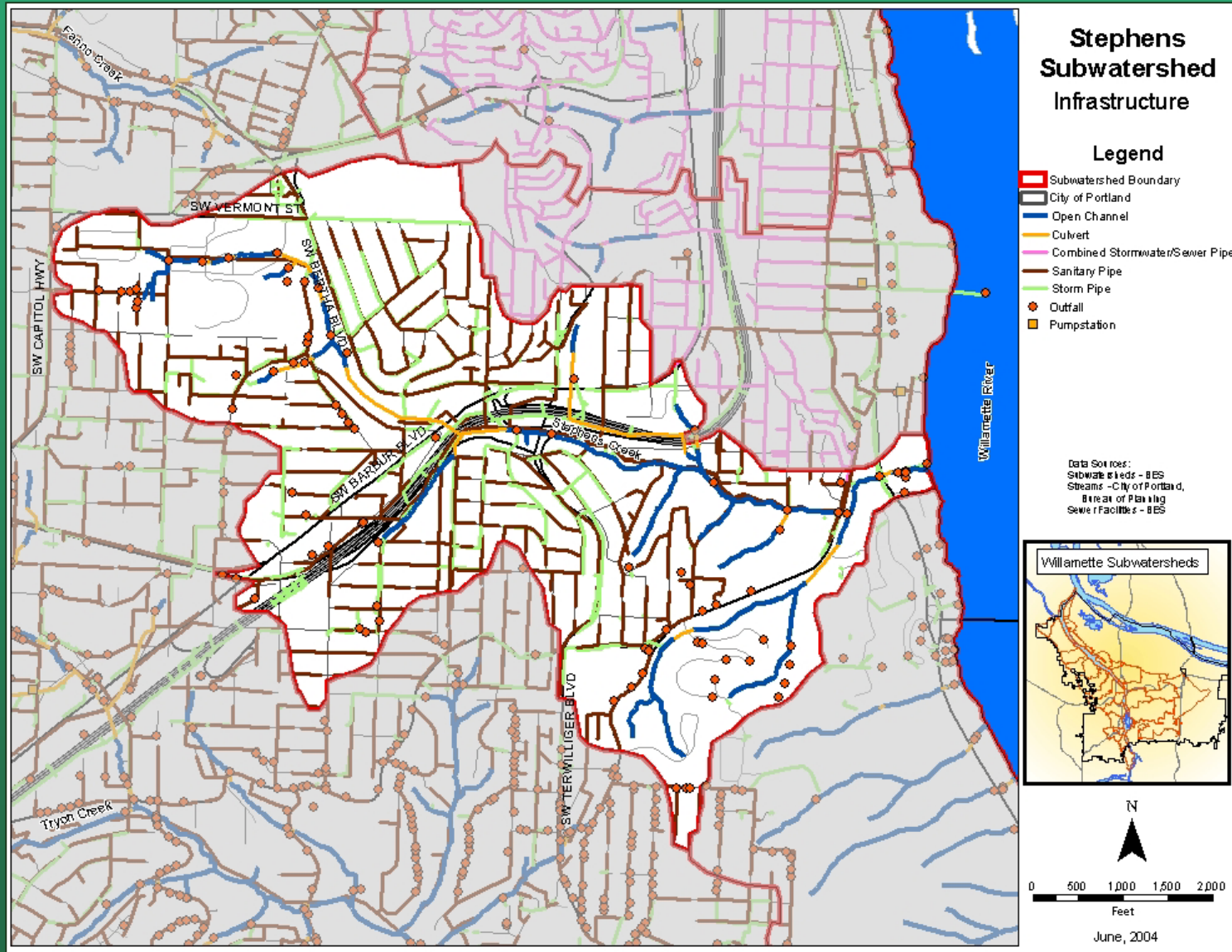
Manage stormwater in headwaters of Stephens Creek to:

- Protect failing infrastructure downstream
- Protect public health, safety and property
- Reduce sediment loads and severe channel erosion from unpaved streets
- Protect off-channel habitat at confluence with Willamette River

Watershed Protection Strategies

- Improve street to prevent erosion
- Use vegetated surface facilities to manage stormwater
- Acquire and restore wetland on SW 26th Avenue

SW Texas Green Street LID Resolution of Intent Hearing



SW Texas Green Street LID Resolution of Intent Hearing

LID Offers Solutions to these Local Stormwater Problems . . .



Unmanaged sheet flow across streets and in backyards



Drainage ditches clogged by eroded sediment

SW Texas Green Street LID Resolution of Intent Hearing

Wetland Property - 0.62 Acres
Acquire and Restore to Manage Stormwater Runoff



Looking east from Texas



On property, looking northwest
towards neighborhood

SW Texas Green Street LID Resolution of Intent Hearing



Burlingame line paralleling Stephens Creek,
exposed by stream erosion

SW Texas Green Street LID Resolution of Intent Hearing

Burlingame Sanitary Trunk Line



Sanitary pipe leaking directly into Stephens Creek

Joints spaced at 4' intervals in Burlingame trunk line; hundreds of joints are leaking

SW Texas Green Street LID Resolution of Intent Hearing

Mouth of Stephens Creek on the Willamette River Off-Channel Salmon Habitat



SW Texas Green Street LID Resolution of Intent Hearing

LIDs Improve Neighborhood Livability. . .



Street, sidewalk and stormwater improvements make a dramatic difference in neighborhood livability