



OUR STREET NUMBER SYSTEM

Provides only 20 numbers to the block, requiring 5 city blocks for 100 numbers—a fact well to bear in mind if you intend to save.

Even numbers on east and south sides of streets.
Odd numbers on west and north sides of streets.

The Diagram to the left divides Portland into 6 sections. Sections 1 and 2 comprise the west side.

Ankney Street, between sections 1 and 2, is the starting point for numbering streets running north and south on the west side, the number at Ankney being 1.

That part of 16th street in section 1 and south of Ankney is known as 16th street—no prefix or suffix being used.

That part of 16th street in section 2 and north of Ankney is known as East 16th street North, the prefix E. being added, but no suffix.

East Ankney street between sections 4 and 5 is the starting point for numbering streets running north and south on the east side, the number at East Ankney being 1.

That part of 16th street in section 5 and south of East Ankney is known as East 16th street North, the prefix E. being added, but no suffix.

The river is the starting point for numbering streets running east and west.

Streets running east and west in sections 1 and 2, comprising the West side, number beginning at the river west.

Streets running east and west in sections 4 and 5, comprising the East side, number beginning at the river east.

Observe in the diagram that the river bends to the left just above Ankney street, necessitating a new starting point for numbering streets running east and west in section 3 and most of section 4.

Fulton Avenue is the new starting point.

That part of Lombard street east of Patton in section 4 is known as Lombard street East, though usually the suffix E. is not used.

That part of Lombard street west of Patton in section 3 is known as Lombard street West, the suffix W. being used.

All streets in section 6, south of Division, running east and west are numbered Avenue S. E., as 25th Avenue S. E., 26th Avenue S. E., etc., with numbers to the block.

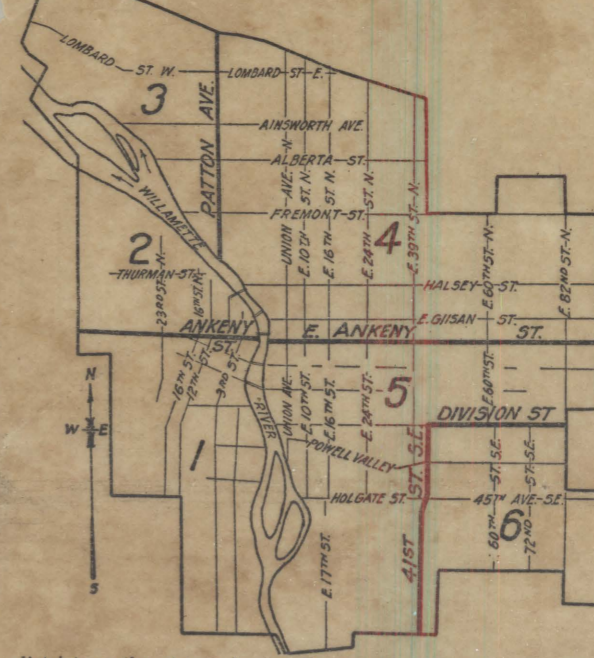
All streets in section 6 east of 41st running north and south are numbered streets S. E., as 41st Street S. E., 42d Street S. E., etc., with numbers to the block.

The addition of the suffix S. E. to either street or avenue, indicates that it is in section 6.

4500 50th Street S. E. would be at the intersection of 50th Avenue S. E. and 45th Street S. E.

The St. John district—our newly annexed territory north of the 5-mile circle in northwest corner of large map, has 100 numbers to the block. Extreme care must be exercised in this district as the streets having E. and W. prefixes are more nearly north and south. While streets having "N" and "S" prefixes are more nearly east and west.

Jersey street is the starting point for numbering streets running east and west (but in reality running nearer north and south. Burlington street is the starting point for numbering streets running north and south (but in reality running nearer east and west.



SAFETY FIRST

West side going south from Ankney in section 1.	Porter 735 Woods 755 Glover 775 Gibbs 795 Whitaker 815 Curry 835 Finnery 855 Gaines 875 Lane 895 Abern' 915 Thomas 935 Gibson 955 Baker 975 Hamil's 1055 Julia 1145 Edison 1265 Lee 1285 Rounly 1290 Hewer 1307 Pendlin 1340 Iowa 1360 Dakota 1435 Ohio 1455 Idaho 1475 Yernon 1495 Texas 1515 Nevada 1575 Michigan 1625 Illinois 1685 California 1715 Oregon 1735 Washington 1755 Maryland 1775 Virginia 1795 Kentucky 1815 Tennessee 1835 Alabama 1855 Louisiana 1875 Mississippi 1895 Arkansas 1915 Missouri 1935 Illinois 1955 Indiana 1975 Ohio 1995 Pennsylvania 2015	Flanders 95 Gillan 115 Hoyt 135 Irving 155 Johnson 175 Keamey 195 Marshall 235 Northrup 255 Overton 275 Pettygrove 295 Lovelock 315 Haleigh 335 Harrison 355 Thurman 375 Upshur 395 Yaucha 415 Wilson 435 Roosevelt 455 York 475 Stephens 555 Wasco 575 Lincoln 595 Grant 615 Sherman 635 Caruth 655 Division 675 Ivon 695 Clinton 715 Macadam 735 Moon 755 Kelly 775 Corbett 795 Water 815 Grant 835 Franklin 855 Stanton 875 Frederick 895 Hick 915 McL'n 935 Lafayette 955 Rhone 975 Bush 995 Cooter 1015 Constance 1035 Cora 1055 Bech 1075 Mallon 1095 Holtgate 1115 Cook 1135 Crampton 1155
---	---	--

PITTMON'S MAP OF PORTLAND

Copyright 1918, by ARMENA T. PITTMON

9th Park 855	Insley 1109	Prescott 947	E.35th 1041
10th Park 905	Harold 1117	Weyant 999	Marv's 1056
11th Park 955	Ellis 1137	Waggoner 1075	E.36th 1069
12th Park 1005	South 1197	Webster 1075	E.37th 1095
13th Park 1055	Yakov 1215	Clayton 1075	E.38th 1189
14th Park 1105	Marion 1235	Summer 1093	E.39th 1185
15th Park 1155	Martin 1255	Clayton 1075	E.40th 1215
16th Park 1205	Clayton 1075	Clayton 1075	E.41st 1215
17th Park 1255	Clayton 1075	Clayton 1075	E.42nd 1215
18th Park 1305	Clayton 1075	Clayton 1075	E.43rd 1215
19th Park 1355	Clayton 1075	Clayton 1075	E.44th 1279
20th Park 1405	Clayton 1075	Clayton 1075	E.45th 1279
21st Park 1455	Clayton 1075	Clayton 1075	E.46th 1315
22nd Park 1505	Clayton 1075	Clayton 1075	E.47th 1315
23rd Park 1555	Clayton 1075	Clayton 1075	E.48th 1315
24th Park 1605	Clayton 1075	Clayton 1075	E.49th 1389
25th Park 1655	Clayton 1075	Clayton 1075	E.50th 1389
26th Park 1705	Clayton 1075	Clayton 1075	E.51st 1412
27th Park 1755	Clayton 1075	Clayton 1075	E.52nd 1412
28th Park 1805	Clayton 1075	Clayton 1075	E.53rd 1458
29th Park 1855	Clayton 1075	Clayton 1075	E.54th 1487
30th Park 1905	Clayton 1075	Clayton 1075	E.55th 1487
31st Park 1955	Clayton 1075	Clayton 1075	E.56th 1507
32nd Park 2005	Clayton 1075	Clayton 1075	E.57th 1507
33rd Park 2055	Clayton 1075	Clayton 1075	E.58th 1507
34th Park 2105	Clayton 1075	Clayton 1075	E.59th 1507
35th Park 2155	Clayton 1075	Clayton 1075	E.60th 1507
36th Park 2205	Clayton 1075	Clayton 1075	E.61st 1507
37th Park 2255	Clayton 1075	Clayton 1075	E.62nd 1507
38th Park 2305	Clayton 1075	Clayton 1075	E.63rd 1507
39th Park 2355	Clayton 1075	Clayton 1075	E.64th 1507
40th Park 2405	Clayton 1075	Clayton 1075	E.65th 1507
41st Park 2455	Clayton 1075	Clayton 1075	E.66th 1507
42nd Park 2505	Clayton 1075	Clayton 1075	E.67th 1507
43rd Park 2555	Clayton 1075	Clayton 1075	E.68th 1507
44th Park 2605	Clayton 1075	Clayton 1075	E.69th 1507
45th Park 2655	Clayton 1075	Clayton 1075	E.70th 1507
46th Park 2705	Clayton 1075	Clayton 1075	E.71st 1507
47th Park 2755	Clayton 1075	Clayton 1075	E.72nd 1507
48th Park 2805	Clayton 1075	Clayton 1075	E.73rd 1507
49th Park 2855	Clayton 1075	Clayton 1075	E.74th 1507
50th Park 2905	Clayton 1075	Clayton 1075	E.75th 1507
51st Park 2955	Clayton 1075	Clayton 1075	E.76th 1507
52nd Park 3005	Clayton 1075	Clayton 1075	E.77th 1507
53rd Park 3055	Clayton 1075	Clayton 1075	E.78th 1507
54th Park 3105	Clayton 1075	Clayton 1075	E.79th 1507
55th Park 3155	Clayton 1075	Clayton 1075	E.80th 1507
56th Park 3205	Clayton 1075	Clayton 1075	E.81st 1507
57th Park 3255	Clayton 1075	Clayton 1075	E.82nd 1507
58th Park 3305	Clayton 1075	Clayton 1075	E.83rd 1507
59th Park 3355	Clayton 1075	Clayton 1075	E.84th 1507
60th Park 3405	Clayton 1075	Clayton 1075	E.85th 1507
61st Park 3455	Clayton 1075	Clayton 1075	E.86th 1507
62nd Park 3505	Clayton 1075	Clayton 1075	E.87th 1507
63rd Park 3555	Clayton 1075	Clayton 1075	E.88th 1507
64th Park 3605	Clayton 1075	Clayton 1075	E.89th 1507
65th Park 3655	Clayton 1075	Clayton 1075	E.90th 1507
66th Park 3705	Clayton 1075	Clayton 1075	E.91st 1507
67th Park 3755	Clayton 1075	Clayton 1075	E.92nd 1507
68th Park 3805	Clayton 1075	Clayton 1075	E.93rd 1507
69th Park 3855	Clayton 1075	Clayton 1075	E.94th 1507
70th Park 3905	Clayton 1075	Clayton 1075	E.95th 1507
71st Park 3955	Clayton 1075	Clayton 1075	E.96th 1507
72nd Park 4005	Clayton 1075	Clayton 1075	E.97th 1507
73rd Park 4055	Clayton 1075	Clayton 1075	E.98th 1507
74th Park 4105	Clayton 1075	Clayton 1075	E.99th 1507
75th Park 4155	Clayton 1075	Clayton 1075	E.100th 1507

The Car Line Diagram above shows at a glance the streets traversed by any car. Above the line appears the car sign letter, followed by the name, while below the line appears the name of the street on which car runs. This diagram used in conjunction with map will identify readily any car line on map.

Car Sign	Name	Down Town Terminal	Outer Terminal
A-B	Alberta Street	2d and Alder	East 80th and Ainsworth
A-H	Arlington Heights	2d and Washington	Fairview and View Place
B-W	Broadway Street	Broadway and Jefferson	East 29th and Mason
B-X	Brooklyn	2d and Yamhill	East 21st and Blumark
B-Y	Beaumont	5th and Washington	East 21st and Alameda
C-E	Bridge Transite	Broadway and Larrabee	East Lincoln and Grand
C-F	Council Crest	2d and Washington	East 18th and Belmont
C-H	Corral Heights	East 32d and Knapp	Anderson and Strowbridge
C-I	East Moreland	Dyke and Siltwankie	East 32d and Rex
F	Fulton	1st and Alder	Riverview Cemetery
H-A	Hawthorne Avenue	Jefferson and Slout	29th Ave and 74th St. S. E.
I-J	Irvining-Jefferson	1st and Alder	East 16th and Prescott
K	Kenon	Broadway and Washington	Darby and Kilpatrick
K-H	Kings Heights	2d and Washington	East 18th and Belmont
M-A	Mississippi Avenue	Broadway and Washington	Albina and Alaworth
N-R	Northrup Street	1st and Washington	23d and Lovelock
N-S	North and South Portland	1st and Alder	East 18th and Belmont
M-T	Mt. Tabor	11th and Yamhill	East 88th and East Yamhill
M-Y	Montavilla	3d and Yamhill	East 80th and East Stark
Oaks	Oaks	1st and Alder	East 82d and Sandy Blvd.
R-O	Rose City	5th and Washington	East 82d and Sandy Blvd.
R-S	Russell-Shaver	Capitol and Shaver	East Lincoln and Grand
R-T	Richmond	2d and Washington	East 18th and Belmont
R-U	Russell-Shaver	Capitol and Shaver	East Lincoln and Grand
S-S	Sunnyside	2d and Washington	East 48th and Belmont
S-W	Sidwell	Broadway and Washington	St. Johns
10th	Sixteenth Street	5th and Sherman	21st and Reed
13th	Thirteenth Street	1st and Alder	East 18th and Belmont
23d	Twenty-third Street	1st and Washington	24th and Nicola
V-O	Vancouver	2d and Alder	Union and Killingsworth
W-O	Westover	5th and Irving	Thurman and Gordon
W-L	Woodlawn	2d and Alder	East 18th and Belmont
R-M	Richmond	2d and Washington	East 18th and Belmont
W-S	Woodstock	1st and Alder	Woodstock Ave and 77th St. S. E.

TO LOCATE ANY STREET ON MAP
Find street in alphabetical street index in accompanying guide book. After street name in book will appear a letter and figure which refer to letter and figure in border of map, lines drawn from which would cross in vicinity of street.

Mile Circles on face of map are drawn with Broadway and Washington as the center.