

CITYWIDE

Sidewalk Completeness 2024

- Both sides missing
- One side missing
- Both sides considered complete

Portland Bureau of Transportation Transportation & Infrastructure Presentation



February 24, 2025

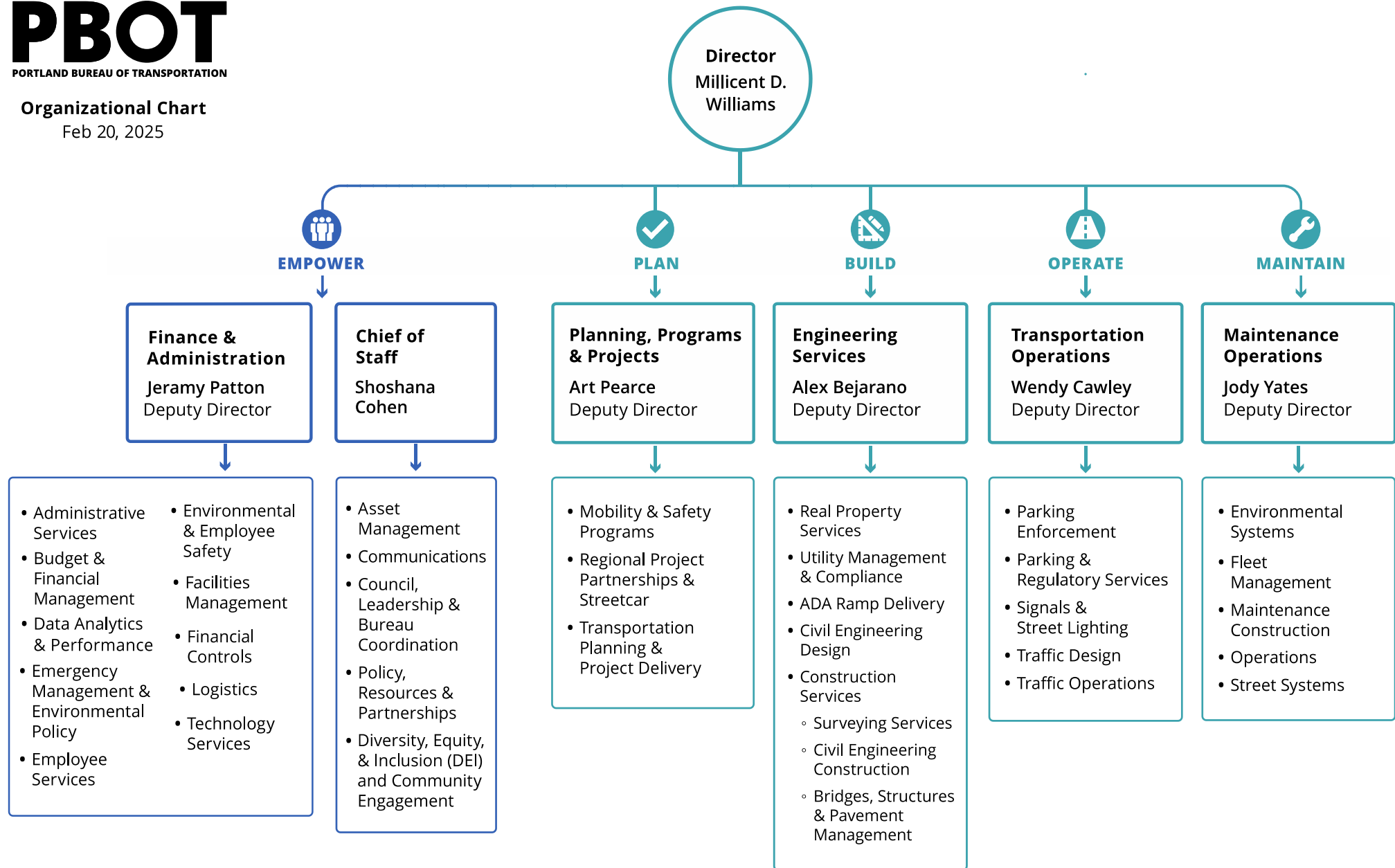


PUBLIC WORKS

PBOT
PORTLAND BUREAU OF TRANSPORTATION

Organizational Chart

Feb 20, 2025



Capital Project Delivery 19 FTE

Delivery oversight and management of capital projects

- Large Capital projects
- Central City mobility projects
- Quick Build projects
- Certified federal aid delivery

Transportation Planning and Project Development 31 FTE

Policy and System Planning

- System, modal and policy planning
- Regional and state policy coordination
- Parking Policy and Neighborhood Parking Planning
- Bicycle, Transit, Pedestrian, ADA Policy and Planning
- Bike, pedestrian and freight committees
- Support and coordination with PP&D
- Greenway planning and projects

Corridor and Project Planning

- High crash corridor plans
- Commercial streetscape plans
- Neighborhood "In Motion" Plans
- Project development and engagement
- Capital grant application development
- Integration of land use and transportation planning
- Priority redevelopment areas

Major Projects and Transit 35 FTE

Major Projects

- Interstate Bridge Replacement
- I-5 Rose Quarter
- Earthquake Ready Burnside Bridge
- 82nd Ave Transit
- Levee Ready Columbia

Transit

- Streetcar-TriMet Partnership
- Streetcar Operations & Maintenance
- Streetcar state & federal reporting
- Montgomery Park Extension Project
- Streetcar vehicle fleet procurement
- Aerial Tram



PLAN

136 Total FTE

Mobility Innovation and Public Realm 17 FTE

Public Realm Activation

- Public Realm Design
- Plaza Partnerships
- Community Use and Event permits
- Block Parties and play streets
- Public art and street painting

Mobility Innovation and Electrification

- Vehicle Electrification
- Freight decarbonization and partnerships
- Policy and pilots for new technologies (e.g. Autonomous Vehicles)
- Taxi, Uber and Lyft policy and regulations and engagement

Mobility and Safety Programs 33 FTE

Safe Systems

- Vision Zero
- Safe Routes to School

Shared Microbility

- Bike share and Scooter share
- BIKETOWN for All
- Adaptive BIKETOWN

Education and Encouragement

- Sunday Parkways
- Portland By Cycle
- Infrastructure Activation
- SmartTrips mobility information program

Transportation Demand Management Policy and Services

- Parking District Transportation Wallet
- Access for All Transportation Wallet
- New Movers Transportation Wallet
- Bike Parking
- Transportation Demand Management Development Review Support

ADA Curb Ramp Division - 22 FTE

Ramps By Request (RBR)

- Community members with mobility disabilities to request ADA curb ramps
- Manage the intake, scoping, designing of all RBR projects
- Construction Support- collaboration with Construction Services

Management of CREEC Settlement

- In collaboration with the City Attorney: manage the settlement agreement
- Provides oversight and tracks the City-wide requirement of 1500 ramps
- Fulfill all annual requirement

Grind & Pave (Fixing Our Streets) Engineering

- Scoping Fixing Our Streets (FOS) projects
- Field Design Team
- Manage the intake, scoping, designing of all ADA ramps built for FOS
- Construction Support
- In collaboration with MO Sidewalks, manage scope, budget and schedule

Compliance Inspection

- City-Wide Survey
- Final Compliance inspections
- Process collaboration with PBOT, partner bureaus, ODOT & private utilities

Public & Private Utility Ramps

- BES Ramp Designs
- Collaboration with UMC, provide ramp trigger reviews for public and private utilities
- Design reviews for all utilities
- Construction support for partner bureaus

Technical Advisory

- Technical Advisory Committee
- ADA Curb Ramp Design Guidance
- Collaboration with Civil Design and City Engineer on standards and policy

Civil Engineering & Drafting Division - 27 FTE

Project Estimation

- Initial Estimates for Proposals
- Revised Estimates in Design Phases

Project Design

- Capital & LID Projects
- Utility Coordination (Relocation)
- Review of Agency Permits
- Coordination with Interagency Bureaus (BES/PWB)

QuickBuild Program

- Project Estimation
- Coordination with Other Project Work
- Design Development
- Construction Management (MO or Contract)

Drafting Support

- Capital Projects
- ADA Division Projects

Construction Support

- Construction Managers as Needed
- Design Revisions when Needed

Standard Development

- Changes for PBOT Standard Drawings
- Changes to City Specifications

Utility Management and Compliance Division 34 FTE

Permit Issuance

- Utilities (City and Franchised/Licensed)
- Environmental Assessment (EA)
- Encroachments
- Sidewalk Repair - Mandatory

Relocation Directives Inspection Services

- MIP (Sidewalk/Driveway - Voluntary)
- Utility
- Environmental Assessments
- Encroachments

Sidewalk Repair - Mandatory

- Sidewalk Assessment - Complaint Driven
- Posting of Adjacent Properties
- Remonstrances
- Contractor Management - City Initiated Repairs

Plan Set Distribution

- Capital and Development Projects/Programs

Compliance

- Code Violations
- Permit Violations
- Fining/Abatement
- Code Hearings



BUILD
191 Total FTE

Construction Services - 85 FTE

Construction Engineering

- Capital Projects Construction
- Quick Builds Construction
- Constructability Reviews
- Federal Funds Documentation
- Contractor payments and change orders

Survey

- Topographic
- Mapping and Design
- Construction Staking and Control
- Survey for BES, Parks and others

Bridges and Structures

- Capital Projects
- Maintenance Repairs
- Permit Review of Structures in ROW
- Technical SME on all structures (bridges, walls, stairs, footings)

Pavement Management

- FOS Smooth Streets
- CIP Paving Projects
- Maintenance Paving Lists
- Asset Management
- StreetSaver Pavement Rating
- Technical SME on all pavements

Construction Inspection

- CIP Inspection
- Quick Build Inspection
- Developer Permit Inspection in ROW
- Constructability Reviews
- Field measurement for pay notes

Real Property Services - 23 FTE

Property Rights Acquisition (Eminent Domain)

- Capital Improvement Projects (PBOT & BES projects)
- Local Improvement District Projects (PBOT & BES)
- Development Exactions (requirement of permit)
- Jurisdictional Transfers (ODOT, TriMet, & Mult. Co.)
- Acquisition in support of Safe Rest Villages

Permitting

- Outdoor Dining Program (Sidewalk Cafes & Street Seats)
- Sidewalk Vending
- Food Trucks
- Bus Shelter/Bench Permitting & Advertising
- Co-located Publication Boxes

Property Rights Disposition

- Leasing Program (Surface, Sub-surface, Airspace)
- Surplus Property Sales
- Street Vacations
- Inter-bureau Transfers

Downtown Transit Mall

- Liaison for TriMet & Portland Mall Management, Inc.
- Manage IGA for 5th and 6th Avenues, SW Yamhill and Morrison Streets, and 1st Avenue

Support Services

- Research requests (CAO, PPB, Infrastructure bureaus, etc.)
- IGA Review
- Expert Witness Services

Parking Enforcement 88 FTE

- Enforcement - **150,000 parking citations/yr**
- Tag/tow abandoned autos & derelict RVs
- **Temp housing for 300+ individuals annually**
- **Demo 500 derelict RVs**
- Emergency towing – blockages of driveways, weather emergencies (ice storms)

Parking Regulatory & Operations 44 FTE

- Parking removal for **visibility clearance**
- Operate **2100 parking meters**
- **13,000 area parking permits**
- 3500 requests for parking signs
- Parking meter rates based on parking usage
- Ride share regulations, including accessibility
- **Safe Ride Home** program
- Towing and impound
- 36 Photo Enforcement safety cameras



Signals & Street Lighting 64 FTE

- Design, operate, and maintain **60,000 streetlights, 1,100 traffic signals, 380 ped beacons**, school speed beacons, and field networking equipment
- TriMet partnership to improve transit times and reliability with traffic signal timing
- **Vision Zero initiatives:** Rest in Red, signal timing for speed reduction, pedestrian head starts, No Turn on Red signage, protecting people walking and biking from turning cars

Traffic Operations 42 FTE

- **823-SAFE** responds to **1000+ community safety concerns** with quick fix safety projects
- **Fatal crash analysis** for safety measures, e.g. guardrails, stop signs, ped crossings, speed reductions
- **25,000+ temporary street use permits** for construction /events
- Traffic analysis and review for land use and PP&D permits
- Speed/volume data collection
- **Visibility:** overgrown vegetation or parking obstructions

Traffic Design 14 FTE

- Analyze traffic patterns & flow for CIP projects: # & type of lanes (bus, bike)
- **Traffic control strategies**, crosswalks, signals, stop signs
- Traffic design for complex local and regional projects, e.g. Interstate Bridge, I-5 Rose Quarter, light rail

Emergency Response

- Winter Weather
- Flooding (localized and riverine)
- Landslide
- Earthquake
- Volcanic Ash



MAINTAIN

384 Total FTE

Operations Division 79 FTE

- Long line striping
- Pavement markings
 - cross walk
 - green bike box
 - stop bars
- Sign installation and maintenance
- Graffiti Abatement (signs, structures, retaining walls, posts)
- Street sweeping
 - commercial routes
 - Arterials routes,
 - Central Business District
 - Bus mall
- Bike Lane maintenance
- Vegetation Management
 - Greenspaces
 - Brushcutting
 - Traffic islands
- Right of way hazard mitigation
- Anti-icing program
- Winter weather response
- Night shift emergency response
- Quick build project delivery
- Parking operations project delivery
- Sunderland Recycling Program
- Leaf collection program

Environmental Services Division 136 FTE

- Sewer pipe cleaning & investigation
- Storm pipe cleaning & investigation
- Storm ditch maintenance
- ADA inlet construction
- Sewer pipe repair
- Storm pipe repair
- Sewer pipe lining
- Utility locates – sewer & storm
- Sewage backups
- Drinking Water Aquifer Protection (underground injection well)
- Localized flooding response
- Winter weather response

Street Systems Division 95 FTE

- Grind and pave
- Potholes
- Base Repair
- ADA Corner Paving
- Utility Cut Restoration (ESD and Water Bureau)
- Gravel Street Program
- Landslide Response in public right of way
- Winter weather response

Maintenance Construction Division 72 FTE

- ADA Corner Reconstruction
- Curb Repair
- Concrete Street Restoration
- Bridge repair & maintenance
- Stair and retaining wall maintenance & repair
- Guardrail repair
- Traffic attenuator maintenance & repair
- Street furniture (bench, bollards, etc.)
- Winter weather response

Technology Services – 24 FTE

- Tech systems support and administration
- Custom application development & support
- Technology consulting
- Asset mapping
- Tech planning & project management

Safety & Emergency Mgmt – 10 FTE

- Safety & Training
- OSHA compliance
- Emergency Management
- Environmental Safety

Policy, Resources, Partnerships & Asset Management – 11 FTE

- Policy Coordination
- Council Coordination
- Resource Development
- System Development Charges
- Grants Coordination
- Fixing Our Streets program management
- PCEF program management
- Tram
- State, federal, regional legislation, committee tracking and support
- Asset Management

Data Analytics & Performance – 6 FTE

- Data analytics and modeling
- Data governance
- Strategic planning
- Performance measure management
- Process improvement & innovation

Financial Controls – 22 FTE

- Paying bills and recording revenue
- Contracts management
- Grants management
- Buying & distributing materials
- Asset accounting & depreciation

Budget & Financial Management – 8 FTE

- Budget development & monitoring
- Revenue forecasting
- Local improvement district financing
- Debt management
- Capital project controls

Employee Services – 14 FTE

- Payroll
- Recruitment support
- Position actions (reclasses, other)
- FMLA coordination
- Employee surveys
- Workforce data collection & analysis



Equity & Engagement – 4 FTE

- Diversity, Equity, Inclusion
- Community Engagement
- Community Sponsorships
- Workforce development
- Title VI reporting
- PBOT committee coordination

Communications – 9 FTE

- Traffic advisories/emergency communications
- News releases/press events
- Social media
- Media relations
- Map and graphic design
- Internal communications
- Public records & constituent services

Facilities & Logistics – 17 FTE

- Fleet management
- Tool room
- Smart Park garages (5) management
- Facility maintenance

Administrative Services – 10 FTE

- Group administrative support
- Interview process support
- P-card support
- Travel coordination
- Space & facility support
- New hire logistics

Asset Needs

Asset Class	Annual Investment for Fair or Better Condition
Pavement Arterial / Collector	\$250M
Pavement Local	\$210M
Bridges	\$51M
Signals & Streetlights	\$30M
Other*	\$59M
TOTAL**	\$600M

*Other assets include Aerial Tram, Parking Operations, PBOT Facilities, Sidewalk System, Streetcar Operations, and Traffic Signs & Markings

** Not including additional investment to add paved streets and sidewalks where they currently do not exist.

Broken



Portland road in poor pavement condition



Flood damaged SE 122nd Ave bridge



Toppled Terwilliger light pole

Fixed



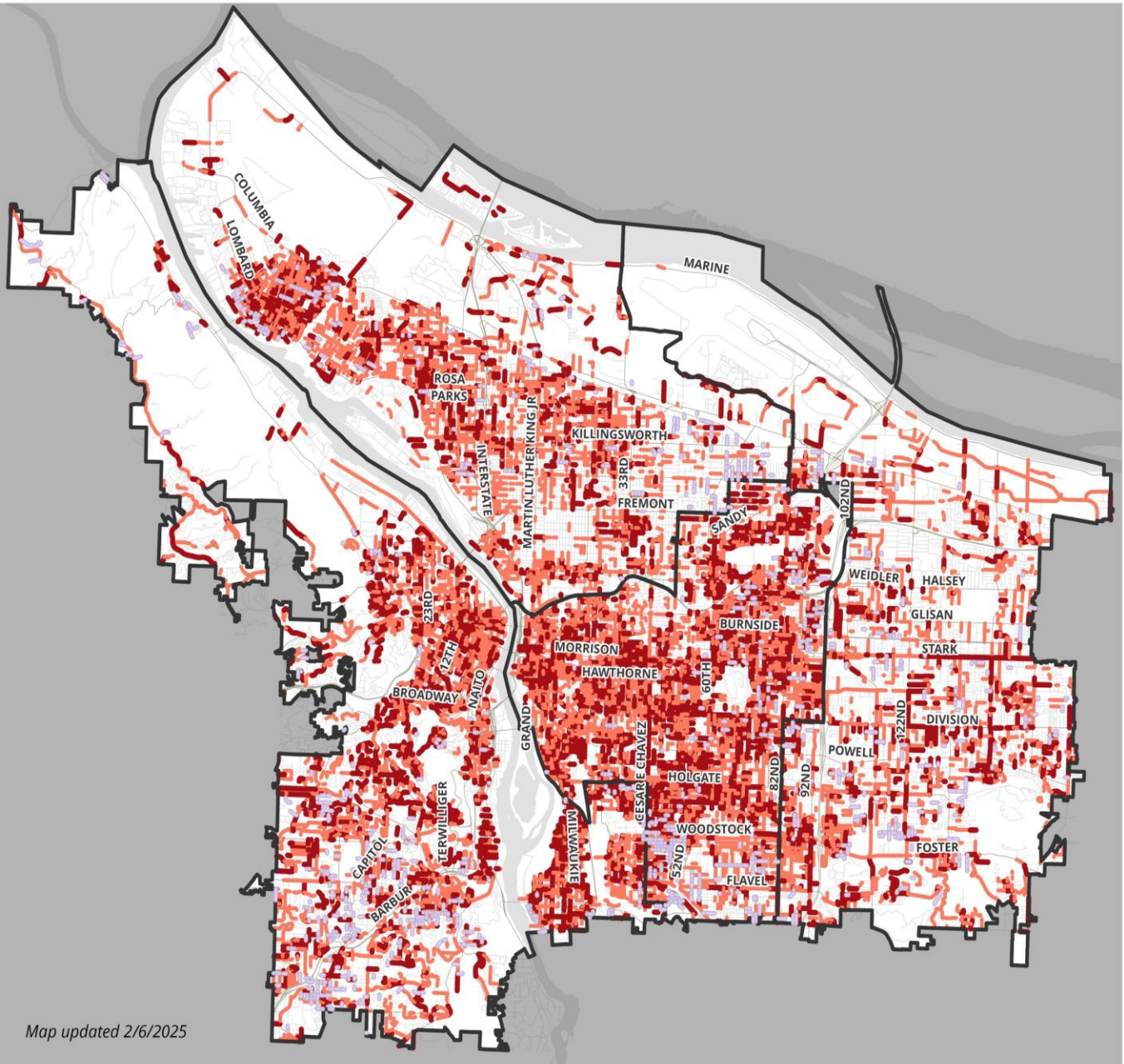
Fixing Our Streets road preservation



Reconstructed SE 122nd Ave bridge Creek



Vandalism repair of a streetlight



Map updated 2/6/2025

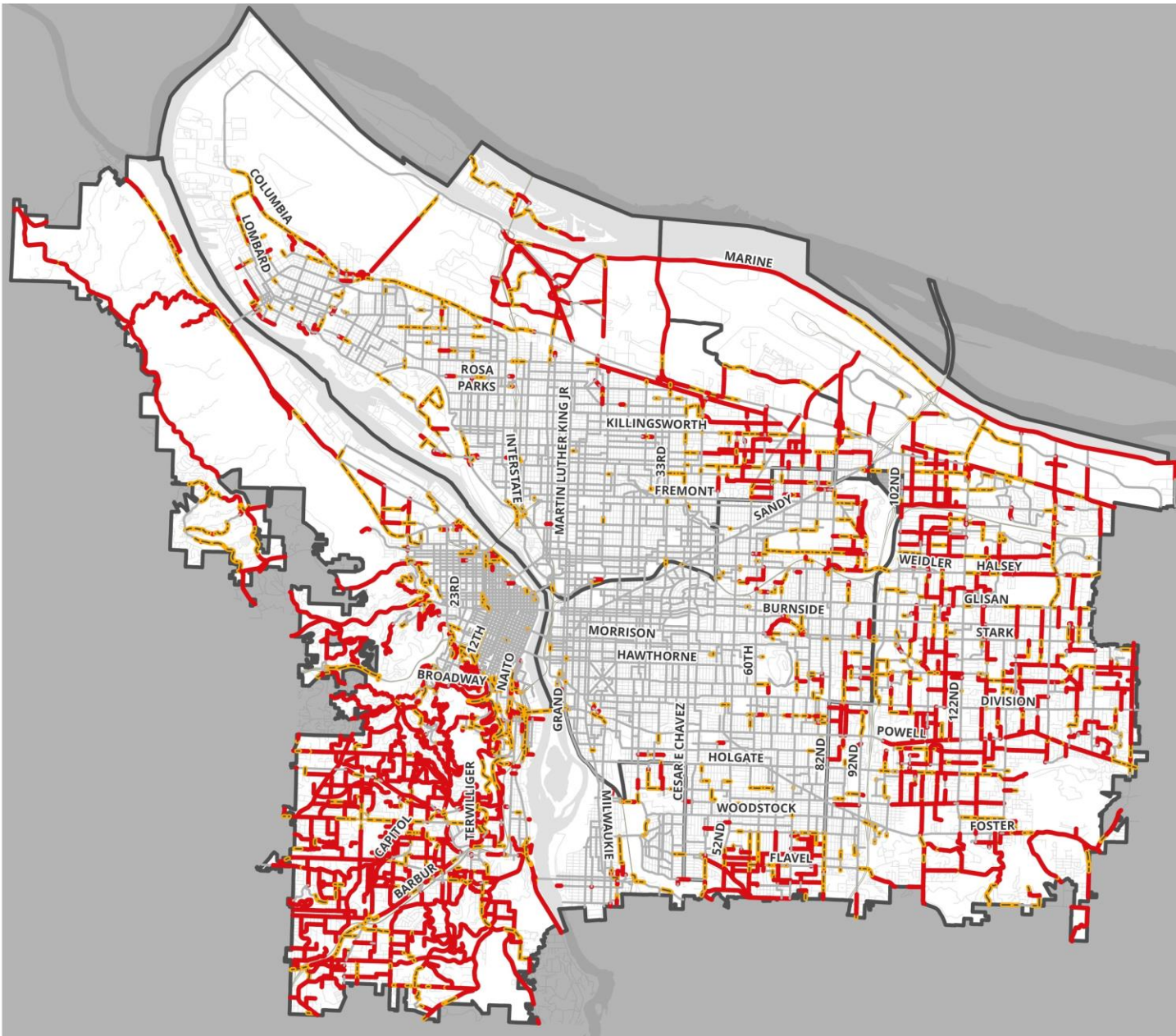
CITYWIDE

Pavement Condition 2024

Pavement Condition Index Score

- Very Poor (0 - 25)
- Poor (26 - 50)
- Gravel Streets

	TOTAL MILES	POOR	VERY POOR	% POOR/ VERY POOR
Busy streets	1,896	663.6	398.2	56%
Local streets	2,982	1,073.5	835	64%
Gravel streets	55.0			



CITYWIDE

Sidewalk Completeness 2024


- Both sides missing
- One side missing
- Both sides considered complete

Advisory Bodies

Modal Committees	Parking Committees	Regulatory Committees	Other Committees
Pedestrian Advisory Committee	NW Parking District Stakeholder Advisory Committee	Private-for-Hire Committee	Fixing our Streets Oversight Committee
Bicycle Advisory Committee	Central Eastside Parking Advisory Committee	Transportation Network Company (TNC) Drivers Committee (Uber/Lyft/Taxis)	Building a Better 82nd Ave Community Advisory Group
Portland Freight Committee	Eliot Parking Task Force	Towing Administration Advisory Committee	Central City Working Group
	Boise Parking Plan Stakeholder Committee		Transportation System Plan (TSP) Update Community Advisory Committee
			Coming in 2025


FY 2024-25 Adopted Budget

Where does the money come from?

General Transportation Revenue \$149.1M	State Highway Fund	\$87,214,217
	Parking Meters	\$34,403,406
	Parking Permits	\$15,203,000
	Parking Citations	\$7,820,000
	Loan Repayments	\$2,546,522
	Interest & Other	\$1,917,130
	Transfers from the General Fund	\$35,640
 Restricted Resources \$437.3M	Federal & Local Grants	\$79,982,552
	One-time balances for set-asides/carryover	\$60,687,722
	Permits & Other Fees	\$50,094,530
	Portland Clean Energy Fund	\$49,242,241
	Fixing Our Streets & HVUT	\$48,581,338
	Work for Other Bureaus/Jurisdictions	\$36,396,550
	Debt Proceeds	\$23,376,355
	System Development Charges	\$21,429,668
	Local Improvement Districts	\$19,324,368
	General Fund/Build Portland	\$13,813,925
	Transportation Reserve Fund	\$12,025,094
	Parking Garage Revenues	\$10,240,549
	Transit Mall Maintenance Set-Aside	\$6,840,440
	Bikeshare	\$3,925,812
	Recreational Marijuana Tax Fund	\$1,388,318

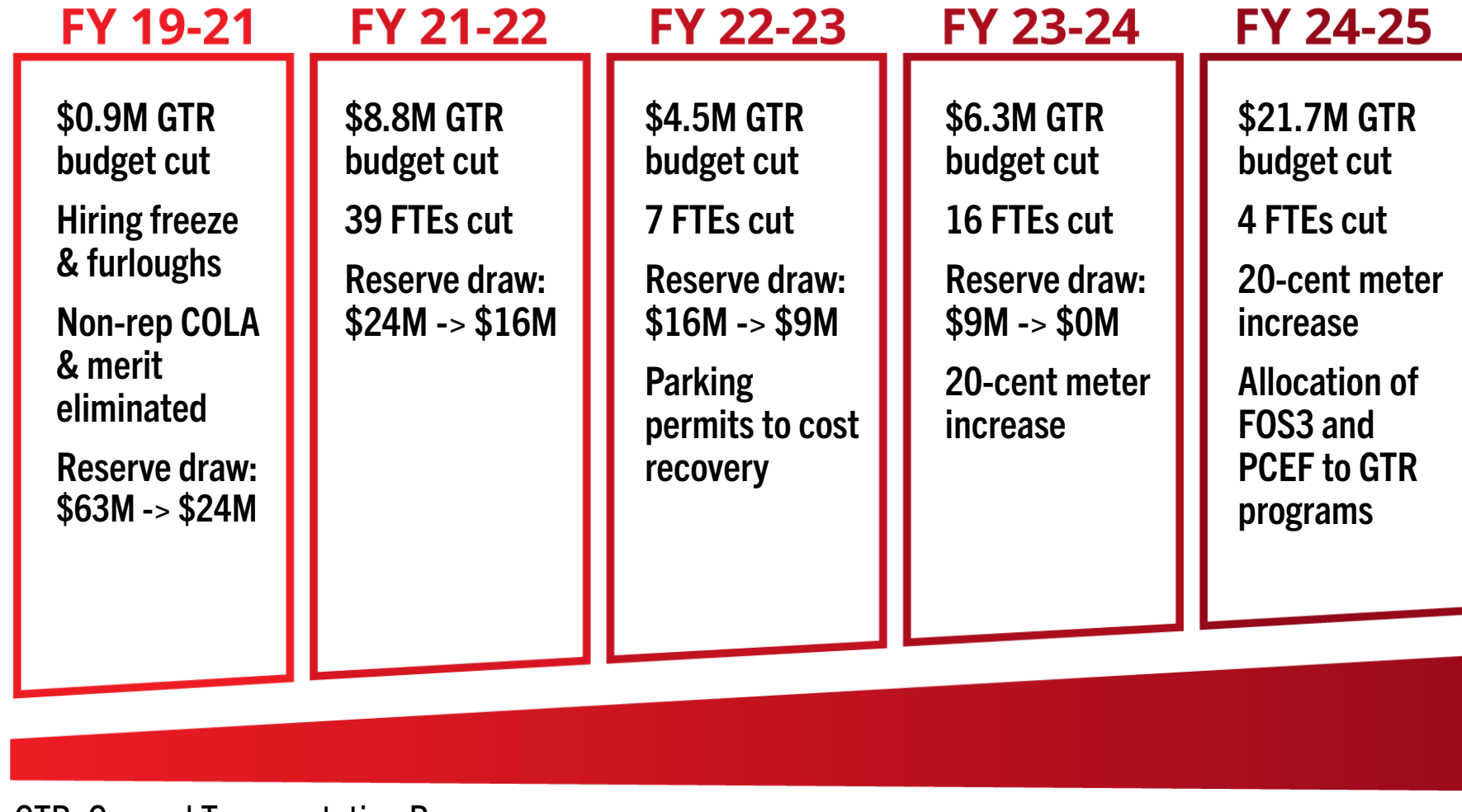
\$586.4
Million
Total
Resources

Where does the money go?

GTR Required \$77.8M	Payments for Citywide Services	\$21,251,941
	Project Carryovers & ADA Ramps	\$17,313,304
	Debt Repayment	\$16,896,741
	Parking Enforcement	\$14,240,319
	Reserves & Required Payments	\$8,078,924
	Asset Maintenance	\$33,506,374
GTR Flexible \$71.4M	Support Services	\$9,835,751
	Parking Ops & Derelict RV	\$8,333,891
	Capital Project Planning/Engineering	\$7,396,995
	Street Cleaning	\$6,955,832
	Traffic Operations & Safety	\$4,579,843
	General Contingency	\$750,000
 Restricted Expenses \$437.3M	Capital Project Planning/Engineering/Const	\$173,752,308
	Reserves & Required Payments	\$97,212,322
	Asset Maintenance	\$52,136,322
	ROW Use & Permitting	\$23,031,325
	Parking Ops & Derelict RV	\$22,655,437
	Traffic Operations & Safety	\$18,656,600
	Support Services	\$17,192,129
	Streetcar Operations	\$16,263,601
	Payments for Citywide Services	\$14,121,875
	Street Cleaning	\$2,327,543

\$586.4
Million
Total
Expenditures

Six years of reductions



- **Total cuts = \$42 million & 66 FTE**
- **Elimination of all reserves**

GTR: General Transportation Revenue

Investment creates opportunity

