



PUBLIC INFRASTRUCTURE ENVIRONMENTAL CODE PROJECT

Discussion Draft
May 2025

Daniel Soebbing

Environmental Planner, BPS

Jeff Caudill

Supervising Planner, BPS



THE BUREAU OF
**PLANNING &
SUSTAINABILITY**

What is the Public Infrastructure Environmental Code Project?

A set of amendments to Portland's environmental overlay zones to facilitate the maintenance, upgrade, and replacement of public infrastructure, and the management of vegetation on city property.





Why are Amendments for Public Infrastructure Needed?

Public infrastructure serves vital functions, including water delivery, waste treatment and flood protection.

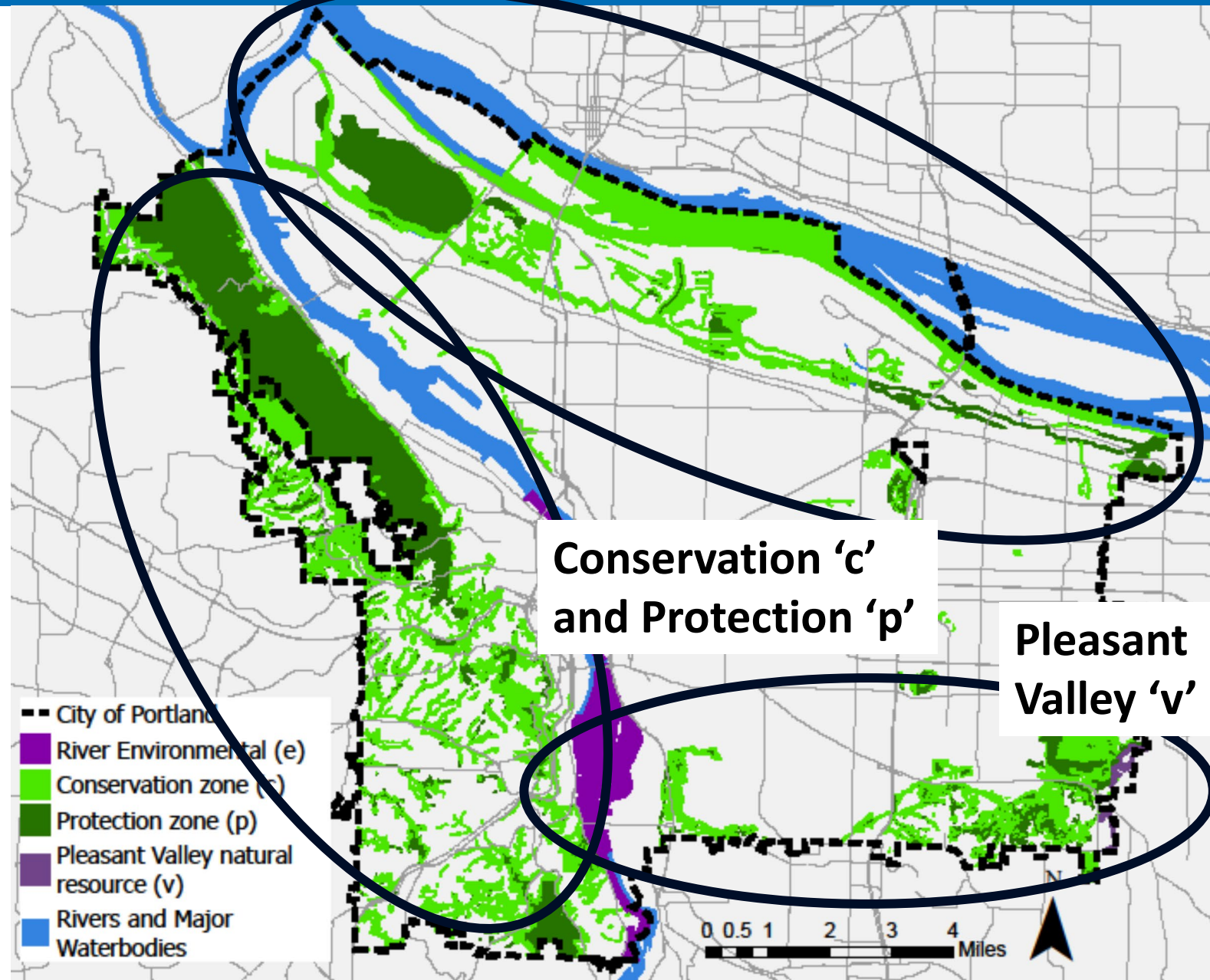
Many of these facilities are decades old and overdue for upgrades or replacement.

Levee Ready Columbia

Many Upcoming Pump Station Replacements

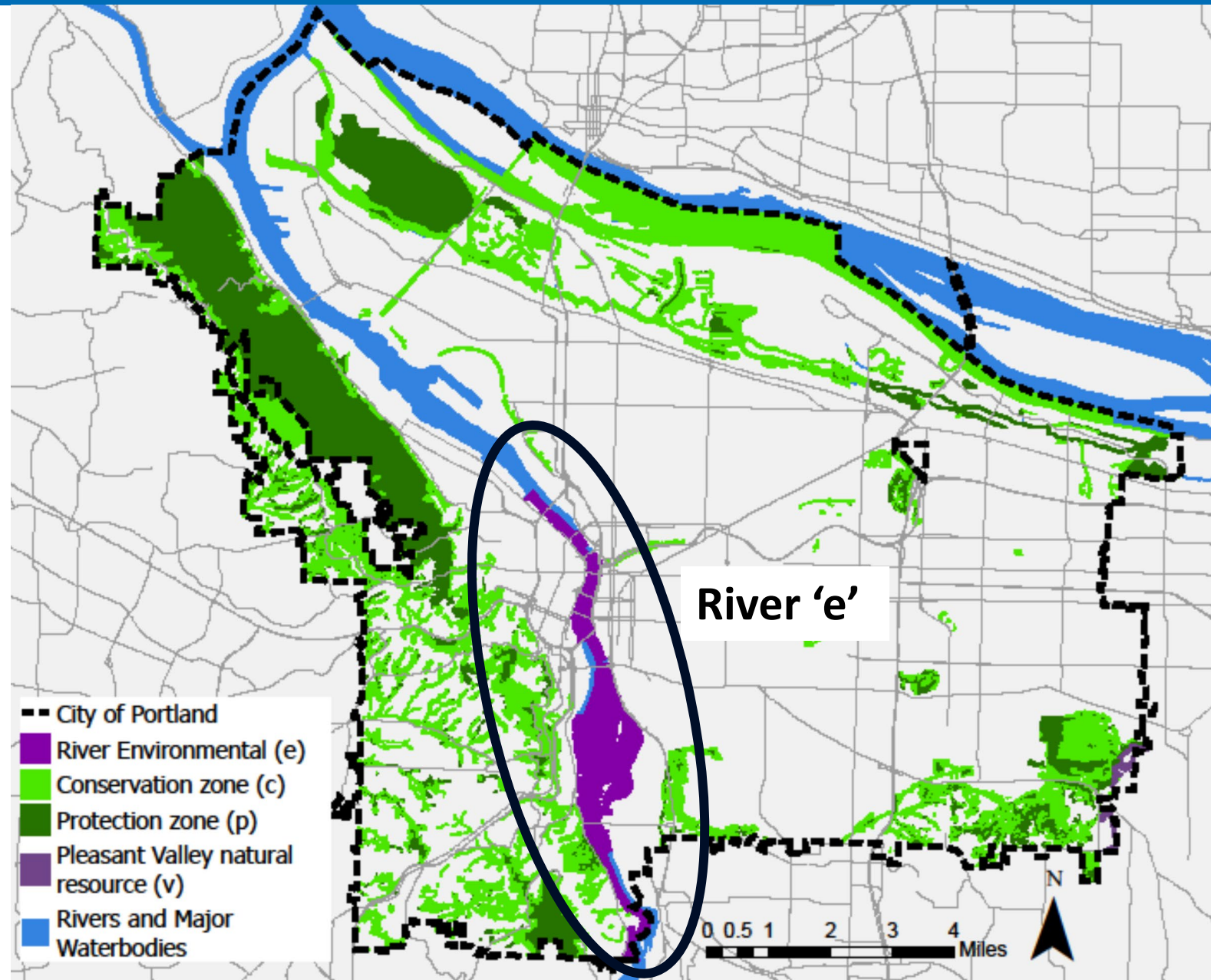
What are Environmental Zones?

- Different environmental overlay zones apply in different areas of the city
- To the extent possible, we aim for consistency across the city



What are Environmental Zones?

- Different environmental overlay zones apply in different areas of the city
- To the extent possible, we aim for consistency across the city



Project Proposals

Four bundles of amendments

1. Pump Station and Flood Control Structure Replacement
2. Natural Area Management
3. Tree Removal and Replacement
4. Miscellaneous Technical Amendments



Public Infrastructure Ezone Project Timeline

- Discussion Draft Released April 14
 - Public Comment Period (Apr 14-May 9)
- **Proposed Draft (Mid-June)**
- Planning Commission Hearing (July 22)
- City Council Hearings (Fall 2025)
- Implementation (March 2026)



Columbia Corridor and Industrial Lands (CCIL) Ezone Project

Columbia Corridor and Industrial Lands (CCIL) Ezone Project

	Conservation Zone	Protection Zone
Minimum Compliance Scenario	High Value Riparian Resources. 30' buffers around water features.	Streams, Sloughs, and most wetlands. No Buffers.
Climate Resilient Scenario	High- & Medium-ranked Riparian Resources. Wetlands >50' from streams.	All Streams, Sloughs. Wetlands within 50' of streams. 25' p zone buffers.
Maximum Resource Protection Scenario	High-, Medium-, and some Low-ranked Riparian Resources.	All Streams, Sloughs, and Wetlands. 50' Buffers.

CCIL vs Public Infrastructure Ezone Project

	CCIL Ezone Project	Public Infrastructure Ezone Code Project
Mapping	Primarily a <u>Zoning Map Project</u>	No changes to Zoning Maps
Code Amendments	Some Zoning Code amendments Possible changes to standards and prohibitions that apply to industrial uses.	Collection of <u>Zoning Code amendments</u> Most amendments apply to public infrastructure.
Impact on Industrial and employment land	<u>Some impact expected</u> Considering 3 alternatives Coordinated with EOA May be paired with economic incentives or investment	No expected impact on industrial or employment land.



Questions or Comments?



THE BUREAU OF
**PLANNING &
SUSTAINABILITY**