

Portland Urban Forest Plan



Planning Commission | April 8, 2025

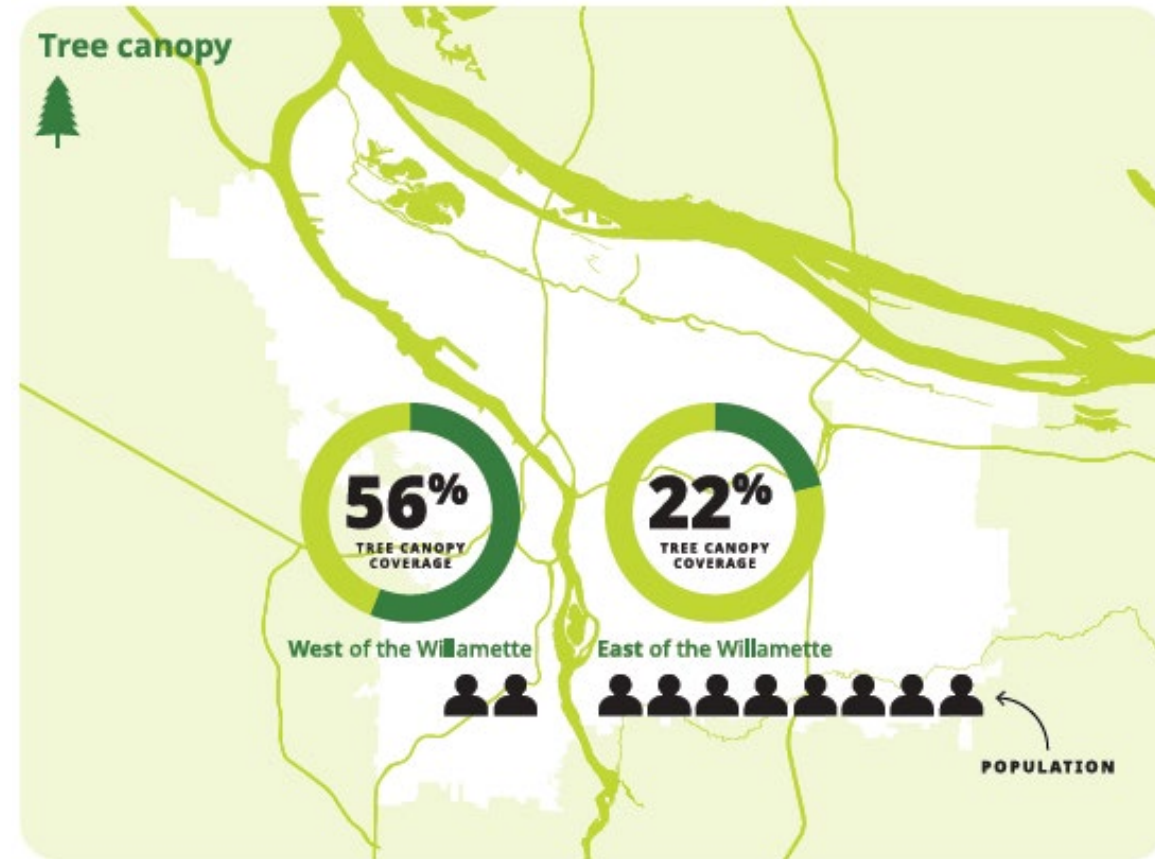


Agenda

1. Draft Plan Overview
2. Next Steps
3. Questions and Discussion

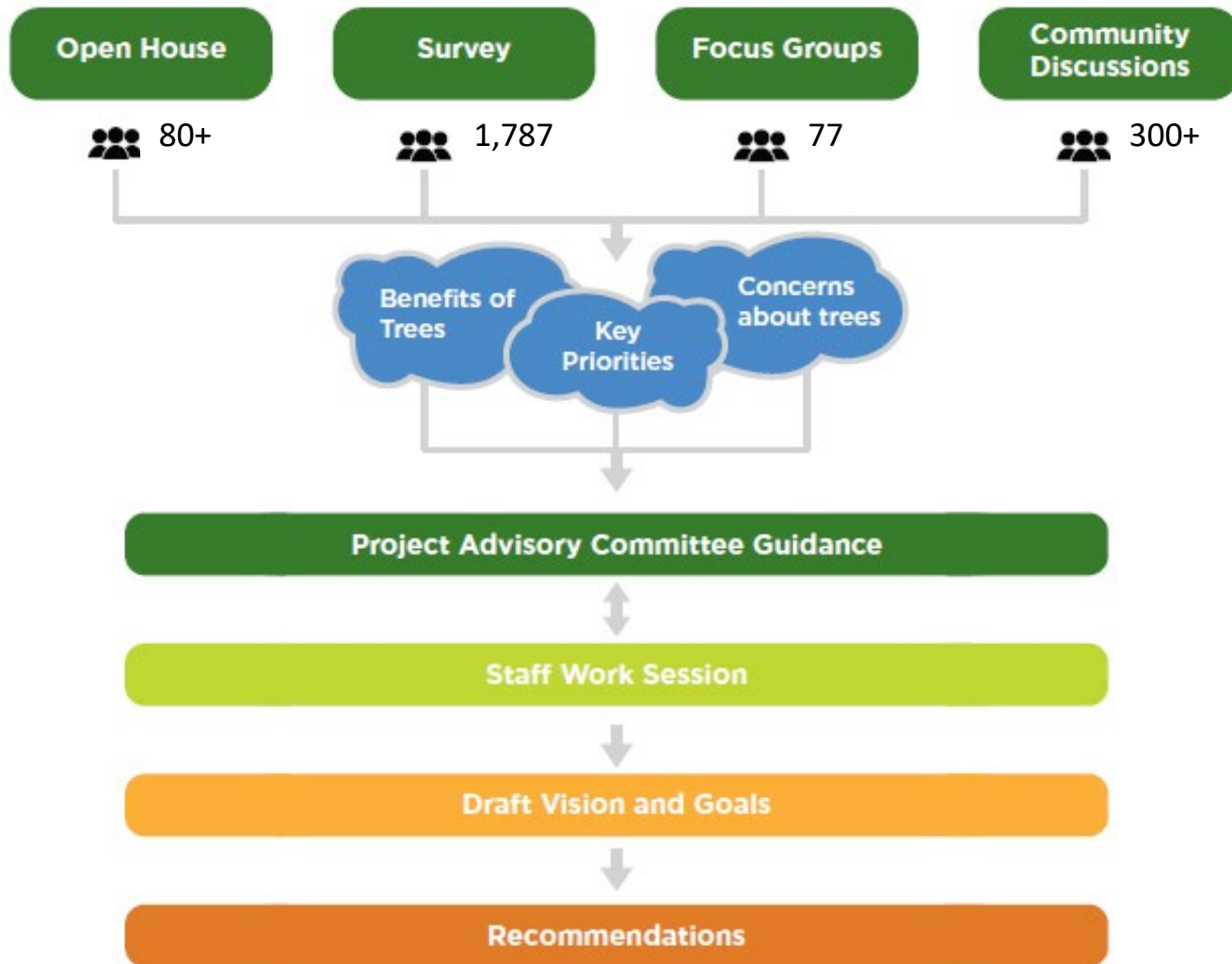
What is the Portland Urban Forest Plan?

- A roadmap for preserving, planting, and caring for trees equitably and sustainably
- A community vision and comprehensive set of goals, recommendations, and actions to guide City management activities and decisions



Draft Plan Overview


Plan Process*




*Before public draft release

Top Community Priorities


- Assistance with tree planting, care, and removal
- Equitable canopy distribution and expansion
- Community education, empowerment, and collaborative stewardship
- Tree preservation, including during development; protect our large trees
- Transparency and accountability



Put equity and equality at the front and center of everything



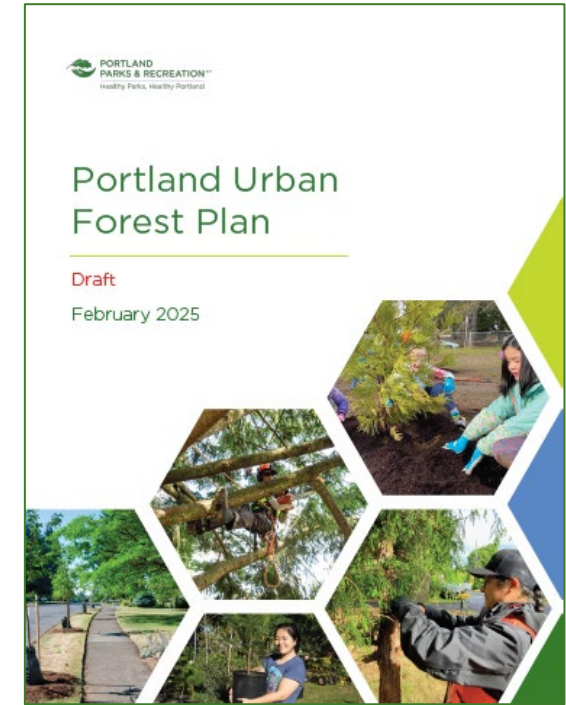
Education, training, and community partnership are critical to achieving our goals



Protect and care for the trees we have, especially large trees

Key Sections in the Plan

1. Background and Plan Purpose
2. Plan Process
3. Portland's Urban Forest Today
4. Vision, Goals, and Tree Canopy Goals
5. Recommendations and Implementation Strategy
6. Tracking Progress and Accountability



Vision for the Future

Portland's urban forest is a healthy and resilient ecosystem which serves as a living testament to our commitment to community health and climate action. As people living on this land, we value, preserve, and care for the health of the urban forest, including the trees, vegetation, and soil.

- The urban forest is healthy, biodiverse, and climate-resilient.
- City decisions are guided by racial and social equity.
- The City and community work collaboratively to share responsibility and care for the urban forest.
- Trees are integrated into urban design and planning to support healthy people and ecosystems.



Goals

Equitable Preservation, Care, and Expansion

- 1** Equitably protect, preserve, restore, and expand Portland's urban forest to support biodiversity and improve community health and safety.
- 2** Prioritize the needs of underserved communities in urban forest planning, programming, and services.
- 3** Implement a comprehensive, citywide, and City-managed street tree maintenance program.
- 4** Prioritize the preservation and planting of trees and creation of new spaces for trees and smaller vegetation in policies, plans, and projects to enhance the city's habitat connectivity, livability, and ecological resiliency.

Education, Outreach, and Partnership

- 5** Provide programs and education about trees and tree care that are responsive to community-identified needs, accessible to all Portlanders, and empower residents to be active stewards.
- 6** Improve coordination between local government, community organizations, and residents to expand and care for the urban forest.

Climate Action and Monitoring

- 7** Actively manage and evaluate the urban forest and adapt practices to maintain forest health, preserve habitat, and respond to the impacts of climate change.

Tree Canopy Goals

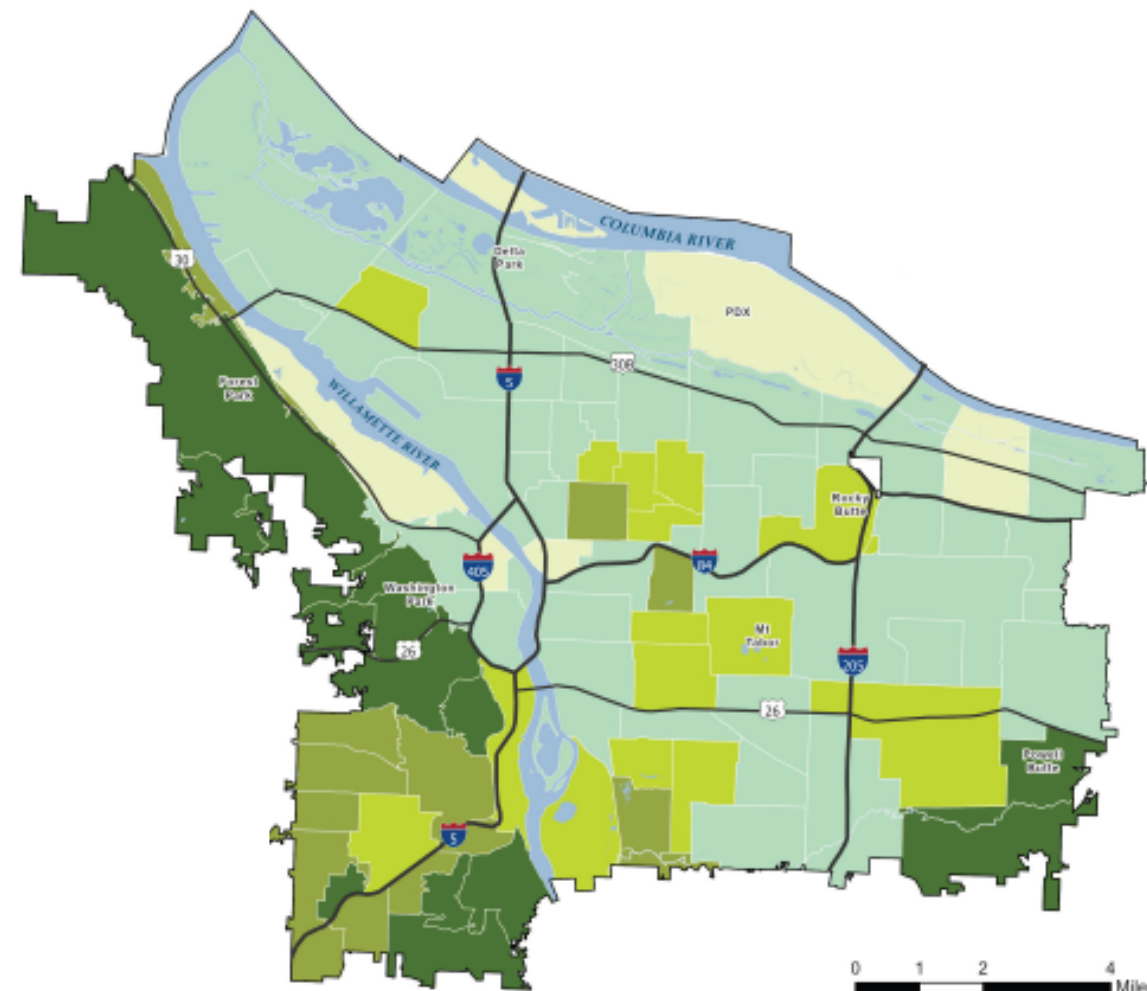
1. Neighborhood minimum
2. Streets
3. Citywide and pattern areas



Goal 1:

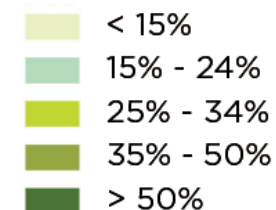
Every neighborhood will
have at least 25% tree
canopy cover

Where we are today	Goal	Estimated Number of Trees Needed
43 out of 94 neighborhoods	All 94 neighborhoods	160,000 trees



This map is derived from Oregon Metro's 2019 Canopy data.

Neighborhood Tree Canopy Cover



Goal 2:
Increase tree canopy cover
over our streets to at least
35% in 20 years

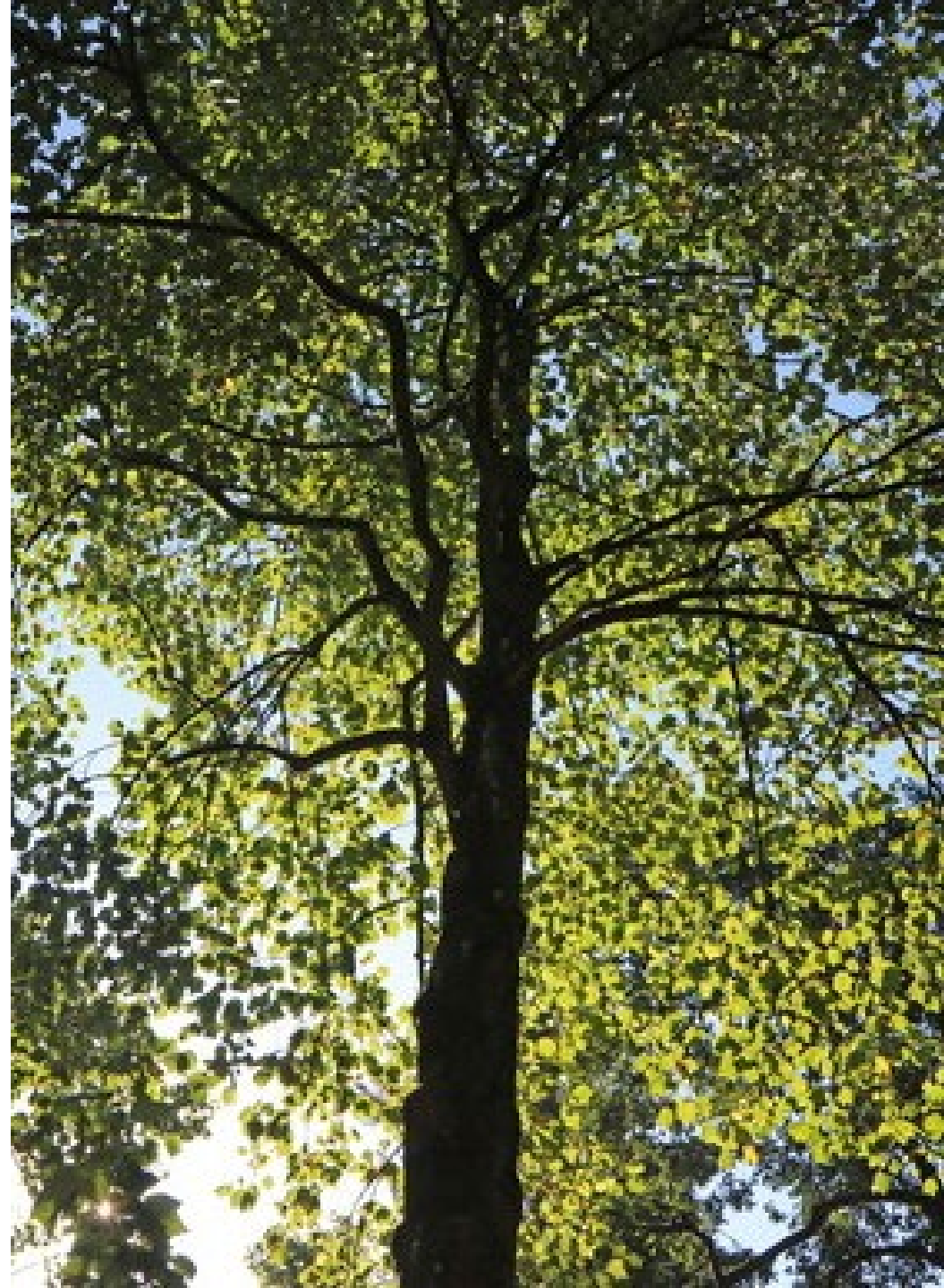
Where we are today	Goal	Estimated Number of Trees Needed
24%	35%	108,000 trees



Goal 3:

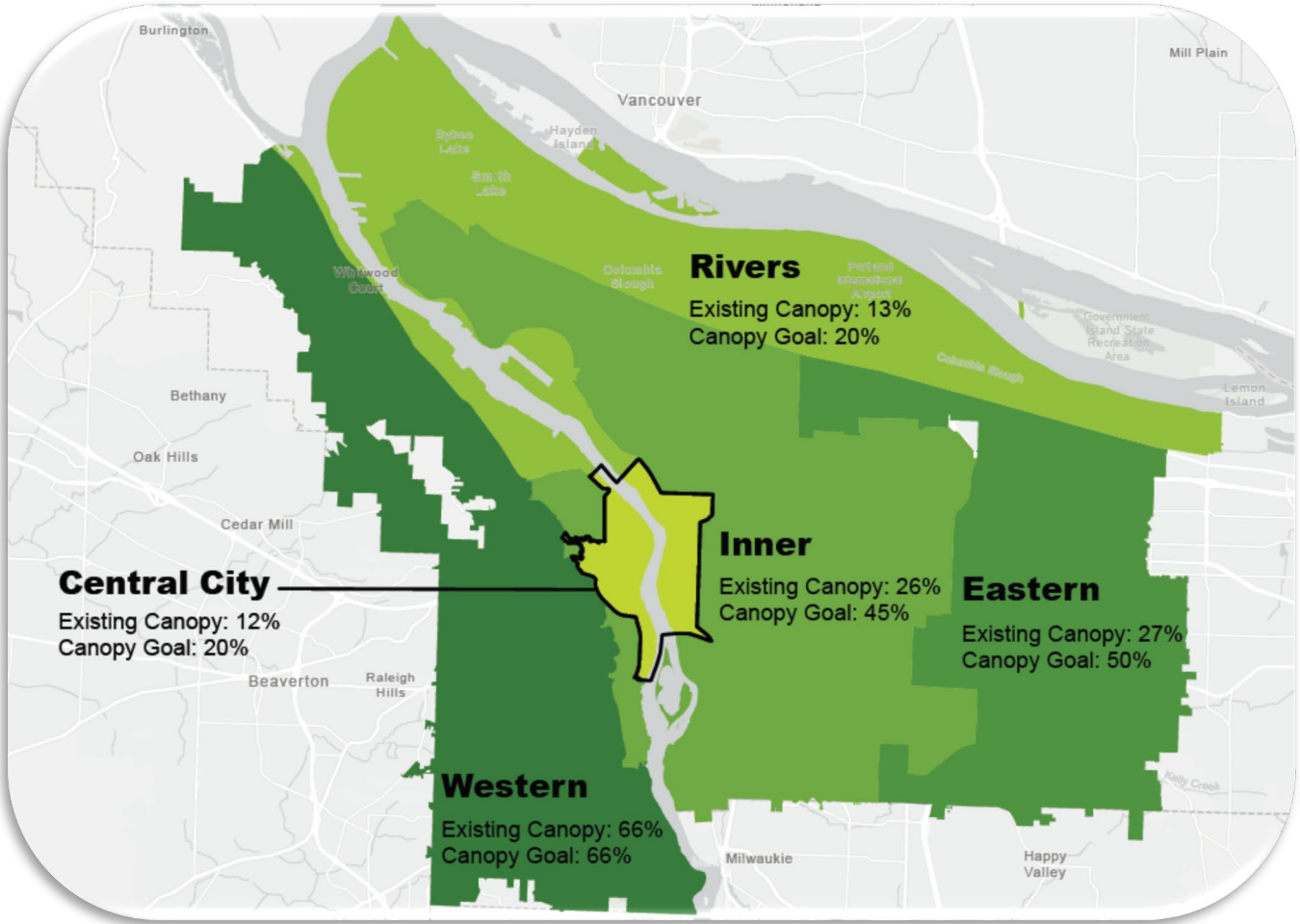
Increase tree canopy cover
citywide to 45% in 40 years

Where we are today	Goal	Estimated Number of Trees Needed
32%	45%	660,000 trees



Achieving Goal 3 Equitably

	Canopy Goal		Current Canopy
Citywide	45%		32%
Pattern Areas	Western	66%	66%
	Central City	20%	12%
	Inner	45%	26%
	Eastern	50%	27%
	Rivers	20%	13%



Seven Recommendations to Help Us Achieve Our Vision and Goals

1

Prioritize the preservation and care of the urban forest

2

Reduce the cost of tree care for Portlanders

3

Design and create new space for trees and other vegetation

4

Expand the urban forest through planting, stewardship, and collaboration

5

Provide inclusive communication, training, and education about the urban forest and tree care

6

Use data, tools, and monitoring to support climate adaptation, meet canopy goals, and equitably distribute canopy

7

Improve City codes, standards, and guidelines to support community resilience and urban forest health

Implementation Strategy

1 Prioritize the preservation and care of the urban forest

Relates to goals: **G1 G2 G3 G4 G5 G6 G7**

Action	Lead & Support	Timeline	Cost Estimate
1-1 Improve inter- and intra-bureau coordination to implement citywide best management practices for tree care in Portland's parks, natural areas, and rights-of-way.	Lead: PP&R and BES	Ongoing	\$
1-2 Preserve healthy trees through updated City policies, programs, and practices.	Lead: PP&R Support: BPS	Ongoing	\$
1-3 Improve compliance with the City's Tree Code (Title 11) to protect, preserve, and expand the urban forest on public and private property during development and non-development	Lead: PP&R and PP&D	Ongoing	\$\$\$

2 Reduce the cost of tree care for Portlanders

Relates to goals: **G1 G2 G3 G4 G5 G6 G7**

Action	Lead & Support	Timeline	Cost Estimate
2-1 Develop and implement a tree care program to provide financial assistance to Portlanders for planting and maintaining trees, as well as removing dead, dying, or dangerous trees on private property.*	Lead: PP&R and BPS (Portland Clean Energy Fund)	1 to 3 years	\$\$\$
2-2 Develop a street tree maintenance program including a pilot project to inform program and cost specifics prior to citywide implementation.	Lead: PP&R and BPS (Portland Clean Energy Fund)	1 to 3 years	\$
2-3 Sustainably fund and implement a comprehensive citywide	Lead: PP&R and	3 to 5	\$\$\$\$+

3 Design and create new space for trees and other vegetation

Relates to goals: **G1 G2 G3 G4 G5 G6 G7**

Action	Lead & Support	Timeline	Cost Estimate
3-1 Incorporate trees and vegetation into medians as part of roadway projects on wide streets where roadway reconfiguration is feasible.	Lead: PBOT Support: PP&R	Ongoing	\$\$\$\$
3-2 Create a permanent Trees in the Curb Zone program for streets without space for trees in the furnishing zone (i.e., planting strip).	Lead: PBOT Support: PP&R	1 to 3 years	\$\$\$
3-3 Develop standards and processes to allow the City or private property owners to widen narrow planting strips or depave parking spaces to create opportunities for trees in the right-of-way. Opportunities could include installing Trees in the Curb Zone	Lead: PBOT and PP&R	3 to 5 years	\$

4 Expand the urban forest through planting, stewardship, and collaboration

Relates to goals: **G1 G2 G3 G4 G5 G6 G7**

Action	Lead & Support	Timeline	Cost Estimate
4-1 Collaborate across City workgroups and with residents, businesses, and community organizations to plant trees on public and private property, including in schools, parks, natural areas, dining corridors, streets, and other public spaces.*	Lead: PP&R Support: PBOT, BES, PWB, BPS (BCEC)	Ongoing	\$\$

5 Provide inclusive communication, training, and education about the urban forest and tree care

Relates to goals: **G1 G2 G3 G4 G5 G6 G7**

Action	Lead & Support	Timeline	Cost Estimate
5-1 Educate the public about the values and benefits of trees and of natural areas for habitat, urban forest health, and water quality.*	Lead: PP&R and BES	Ongoing	\$\$\$
5-2 Provide financial and technical assistance to culturally specific	Lead: PP&R	Ongoing	\$\$

6 Use data, tools, and monitoring to support climate adaptation, meet canopy goals, and equitably distribute canopy

Relates to goals: **G1 G2 G3 G4 G5 G6 G7**

Action	Lead & Support	Timeline	Cost Estimate
6-1 Continue to inventory and assess street and park trees (quantity, type, condition) at regular intervals and partner with the U.S. Forest Service to assess the whole urban forest.	Lead: PP&R Support: Forest Service	Ongoing	\$\$\$

7 Improve City codes, standards, and guidelines to support community resilience and urban forest health

Relates to goals: **G1 G2 G3 G4 G5 G6 G7**

Action	Lead & Support	Timeline	Cost Estimate
7-1 On a five-year basis, continue to review and revise the current approved list of street trees, incorporating, where appropriate, additional large, evergreen, and native trees, climate-resilient species, and culturally significant trees	Lead: PP&R	Ongoing	\$

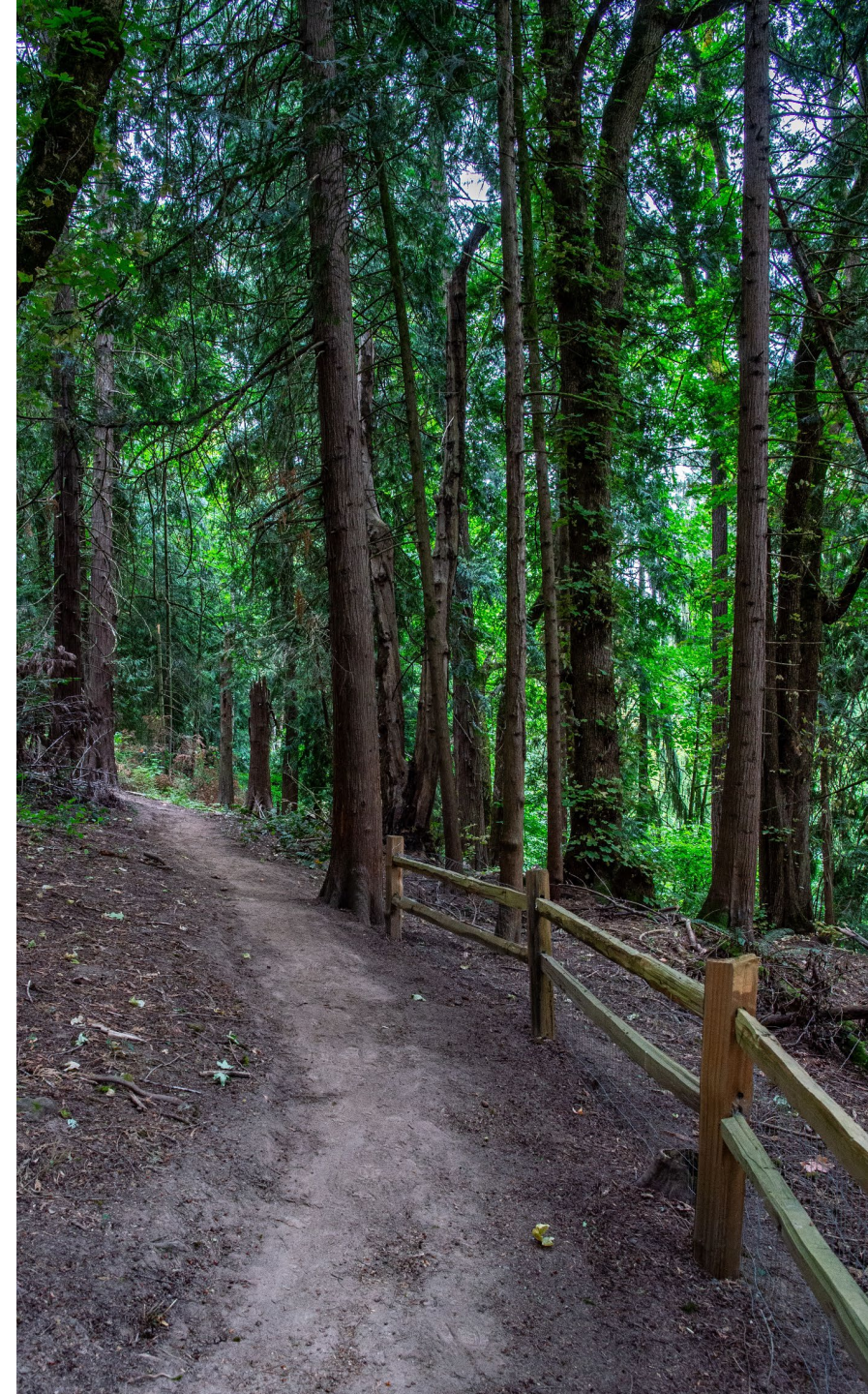
Key Actions from the Implementation Strategy

- Street tree maintenance
- Financial assistance for tree care on private property
- Expansion of the City's planting, education, and outreach programs
- Support for sustainable urban design (e.g., depaving, tree well expansion, Trees in the Curb Zone, and guidance to better integrate trees into development)
- Updates to policies and standards (e.g., Tree Code)



Tracking Progress and Accountability

- Every year we will track and share progress on 10 performance measures
- Every three years we will provide a status report for each action and summarize challenges and opportunities



Next Steps

Next Steps

- 50-day public comment period ending April 13th
- Council Committees and City Council adoption in summer 2025

Read the draft
Plan and submit
your comments
by April 13, 2025



Visit www.Portland.gov/Trees/Portland-Urban-Forest-Plan