

16 X 16 SQ. FT. MAXIMUM PROTECTION AREA FOR RESIDENTIAL SPRINKLERS

SCOPE OF WORK:

CONTRACTOR SHALL INSTALL A NEW WET PIPE FIRE SPRINKLER SYSTEM IN NEWLY CONSTRUCTED BUILDING OF COMBUSTIBLE UNOBSTRUCTED CONSTRUCTION.

FIRE SPRINKLER NOTES:

SYSTEM DESIGNED AS PER NFPA #13D 2021 EDITION

15 TOTAL SPRINKLER HEADS 1,400 SQ. FT. TOTAL AREA PROTECTED ON WET SYSTEM

CONTRACTOR SHALL:

PROVIDE REQUIRED SIGNS & FLUSHING CONNECTIONS

CONTRACTORS MATERIAL AND TEST CERTIFICATES FOR ABOVE GROUND AND UNDERGROUND  
SUBMITTED TO THE FIRE MARSHALL PRIOR TO APPROVAL OF THE INSTALLATION

PIPE MATERIAL:

BLAZEMASTER CPVC PIPE &amp; FITTINGS

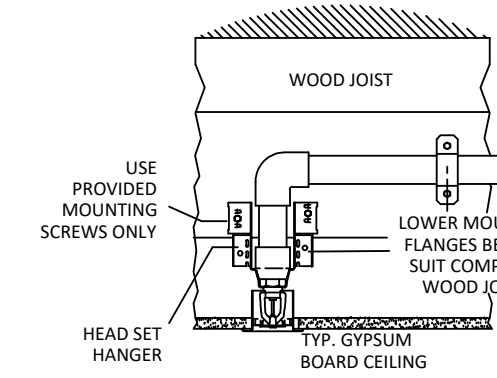
ALL DIMENSIONS & ELEVATIONS ARE CENTERLINE OF PIPE & STEEL UNLESS NOTED OTHERWISE

SPRINKLER HEAD SCHEDULE					
SYMBOL	COUNT	THREAD	K-FACTOR	DESCRIPTION	NOTE
	15	1/2"	4.9	TYCO LF II (TY2234) RECESSED PENDENT 155° F	

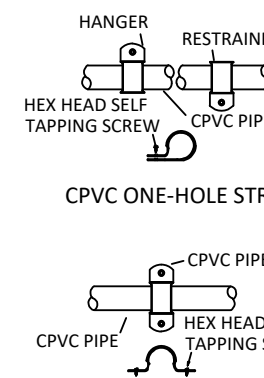
BLAZEMASTE PIPE SDR 13.5 (ASTM F442) HANGER SPACING			
NOMINAL SIZE		MAX SPACING	
inches	(mm)	feet	(m)
3/4"	(20.0)	5.5'	(1.7)
1"	(25.0)	6.0'	(1.8)
1 1/4"	(32.0)	6.5'	(2.0)
1 1/2"	(40.0)	7.0'	(2.1)
2"	(50.0)	8.0'	(2.4)
2 1/2"	(65.0)	9.0'	(2.7)
3"	(80.0)		(3.0)

TABLE 1 MAXIMUM SUPPORT SPACING FOR END LINE SPRINKLER HEADS			TABLE 2 MAXIMUM SUPPORT SPACING DISTANCE FOR END LINE SPRINKLER HEADS		
PIPE SIZE inches	SYSTEM PRESSURE <100 psi	> 100 psi	PIPE SIZE inches	SYSTEM PRESSURE <100 psi	> 100 psi
3/4"	9'		1"	5'	4'
1"	12"	9"	1 1/4"	6'	5'
1 1/4"	16"	12"	1 1/2" - 3"	7'	7'

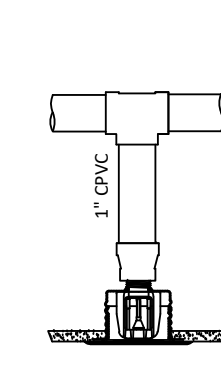
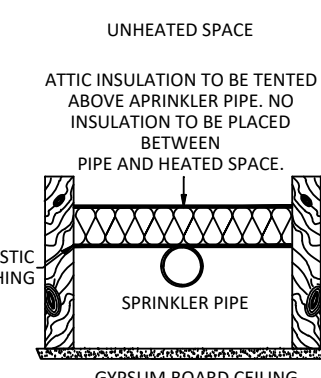
# BLAZEMASTER PIPE



CPVC HEADSET HANGER



.....

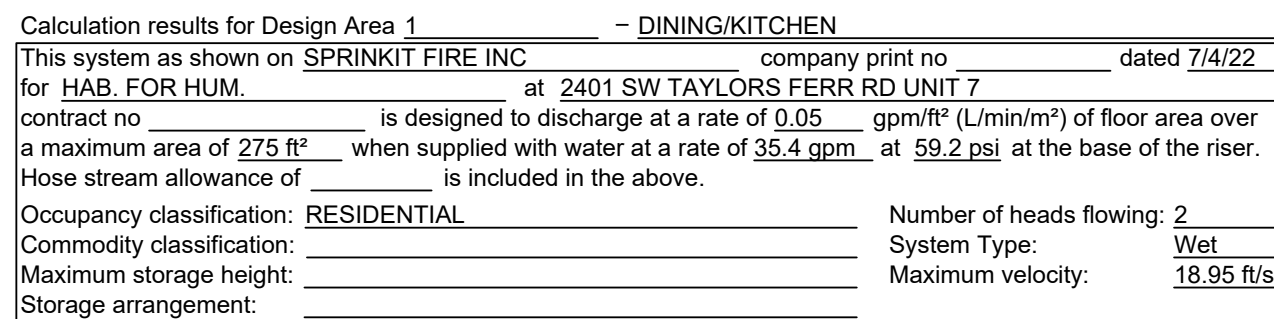


Pipe Size	Ambient Temperature During Cure		
	60 To 120 Deg. F	40 To 59 Deg. F	0 To 39 Deg. F
3/4"	1 HOUR	4 HOURS	48 HOURS
1"	1 1/2" HOUR	4 HOURS	48 HOURS
1 1/4" & 1 1/2"	3 HOURS	32 HOURS	10 DAYS
2"	8 HOURS	48 HOURS	*
2 1/2" & 3"	24 HOURS	96 HOURS	*

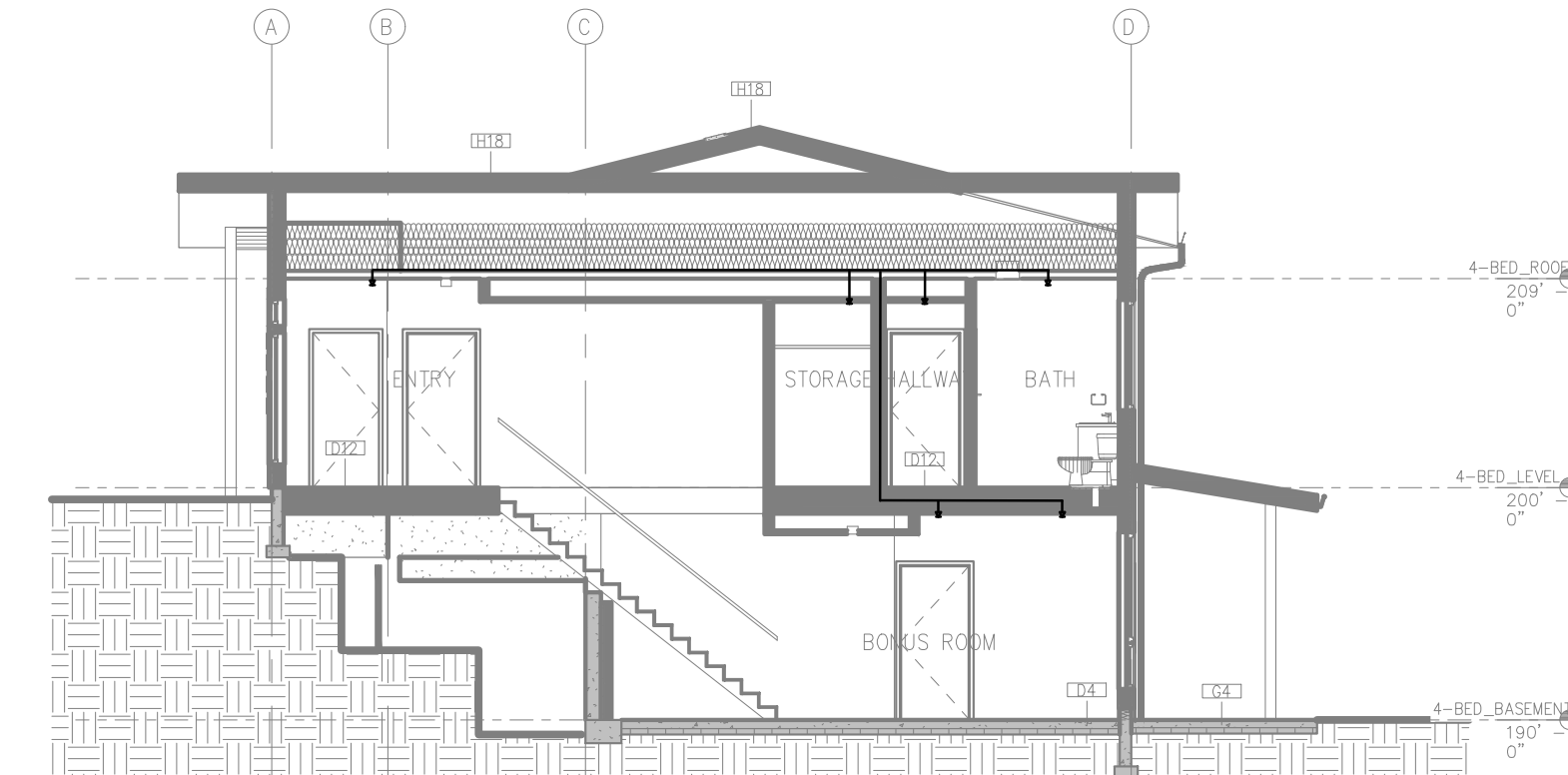
\* Solvent Cement can be applied at a temperature below 40 deg. F for 2" and larger, however if the temperature of the system must be raised to 40 deg. F or higher and allowed to cure per the recommendations prior to pressure testing. When bringing cement, pipe or fittings in from the cold, certain they are brought up to room temperature before using the 60 to 120 deg. F cure schedule.

## CPVC PIPE

- DO NOT support
- DO NOT support equipment, or hang flexible wire/cable, especially communications cable, or other material on the fire line
- ONLY use non-combustible materials including, but not limited to: solvents, cements, caulks, sealants, cutting oils and thread pastes as noted by the CPVC fire resistant piping system manufacturer's installation manual
- DO NOT expose CPVC products to incompatible substances, such as cutting oils, non-water based paints, packing oils, traditional pipe dope, pipe joint dope, liquid sealants, solvents, detergents, building cements, adhesive tapes, solder flux, flexible wire/cable (with special consideration for communications cabling), and non-approved spray foam insulations
- DO NOT expose CPVC products to edible oils, solvents, or glycol-based or freeze fluids
- DO NOT expose CPVC products to open flame, solder, or soldering flux
- DO NOT drop, distort, or impact CPVC products or allow objects to come in contact with them
- DO NOT handle CPVC products with gloves contaminated with oils (hydrocarbons) or other incompatible materials



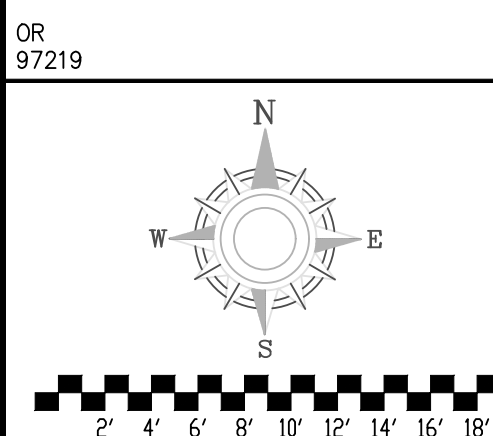
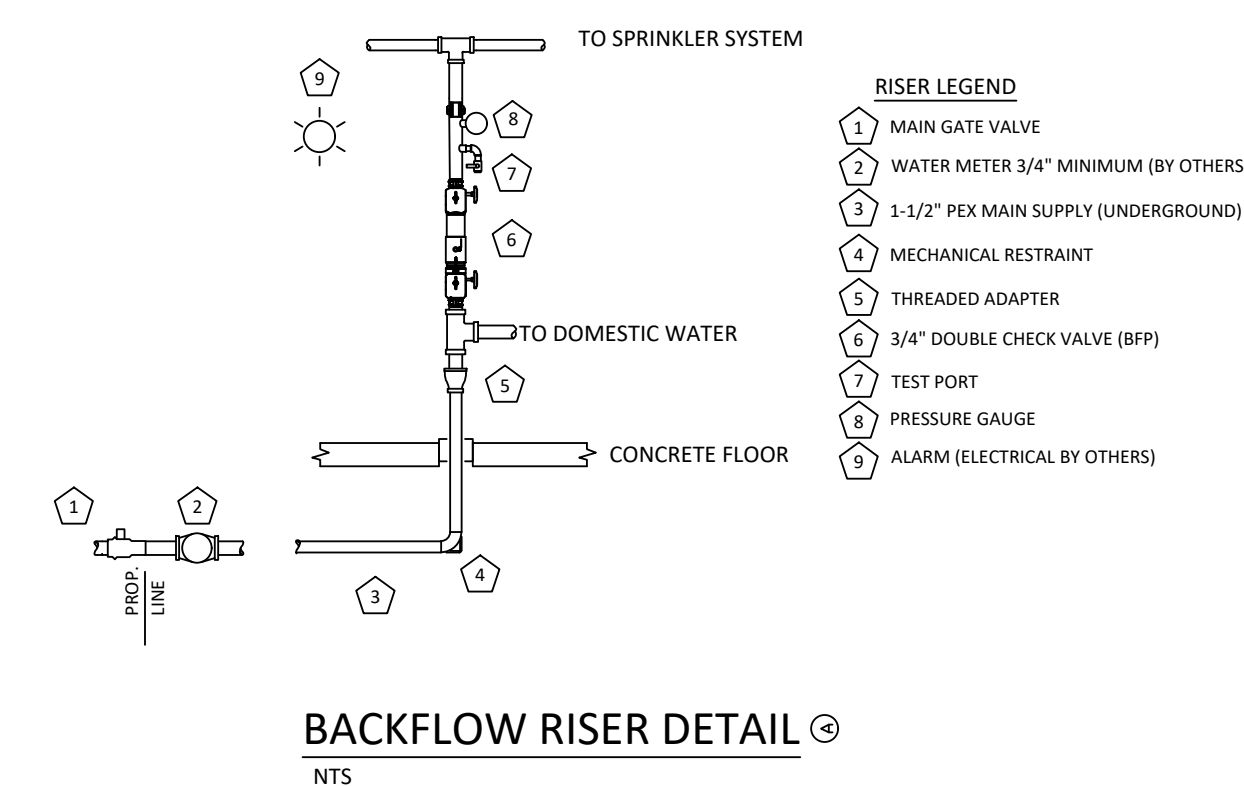
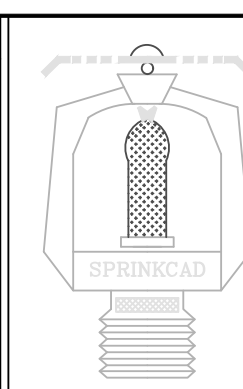
Flow from In-Rack sprinklers:	0 gpm	Pressure Required at Source:	59.2 psi
Flow from Overhead sprinklers:	35.4 gpm	Pressure Available at Source:	83 psi
Flow from Inside Hoses:	0 gpm	Surplus Pressure at Source:	23.8 psi
Flow from Outside Hoses:	0 gpm		
Other fixed flows:	0 gpm		
Total flow in system piping:	35.4 gpm		
Additional flow at/beyond source:	0 gpm		
Total of all flows:	35.4 gpm		



AREA: 850 SQFT SCALE: 1/8" = 1'

AREA 550 SQFT SCALE: 1/8" = 1'

SCALE: 1/8" = 1'

[illegible][illegible]

SPRINKIT FIRE INC  
PO BOX 2227  
OREGON CITY, OR 97045  
USA  
503-272-6650

TAYLORS FERRY HABITAT FOR HUMMANITY UNIT 7  
9198 SW 25th Ave  
PORTLAND, OR 97219

CONTRACTOR:

<b>FIRE SPRINK PLAN</b>	
<b>AREA 1</b>	
PERMIT NO.	
CONTRACT NO.	
APPROVAL	
DRAWN BY BHA	
SCALE 1/8" = 1'-0"	
DATE 6/20/22	
REVISED	<b>FP 1 of 1</b>
PLOTTED	