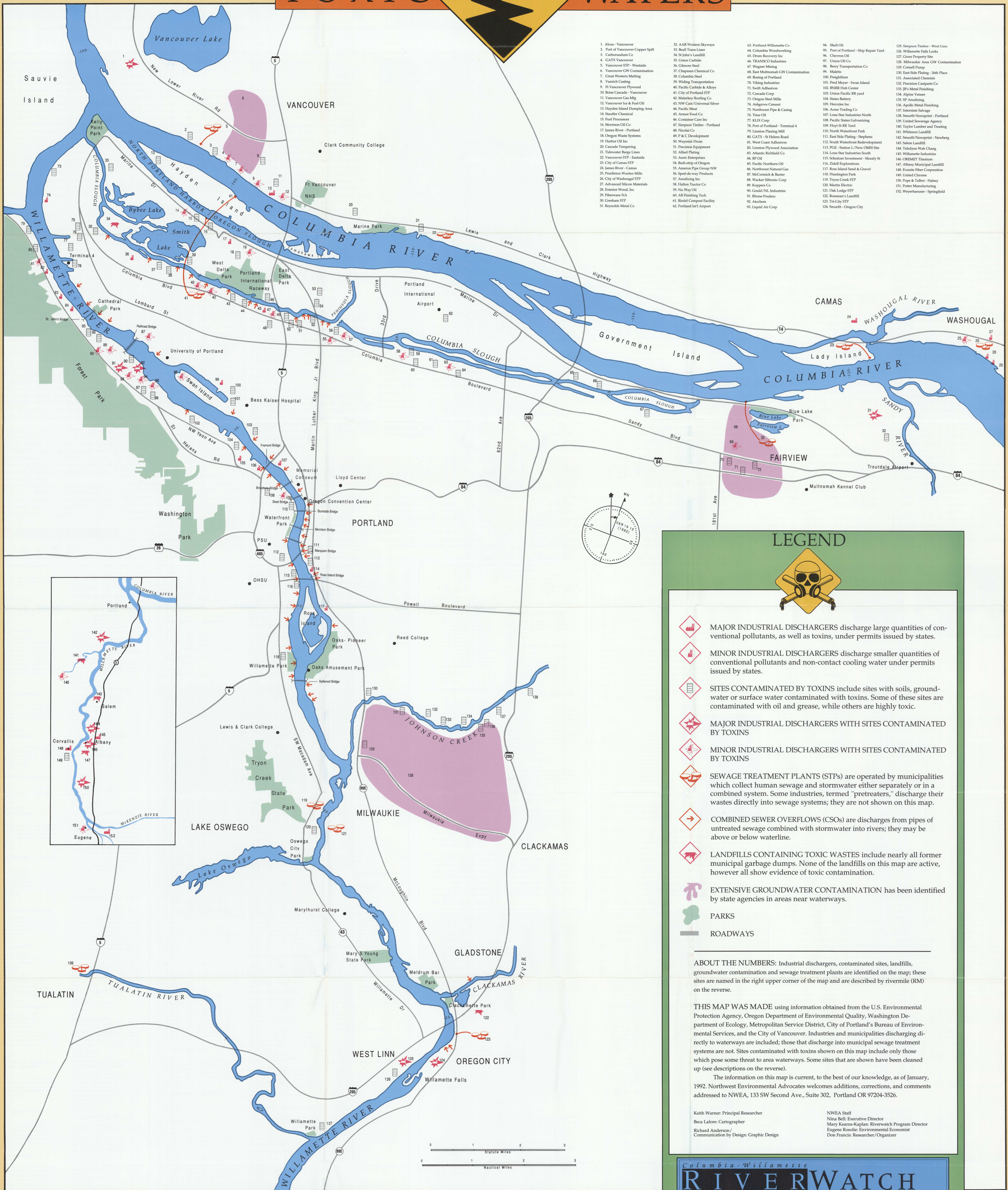
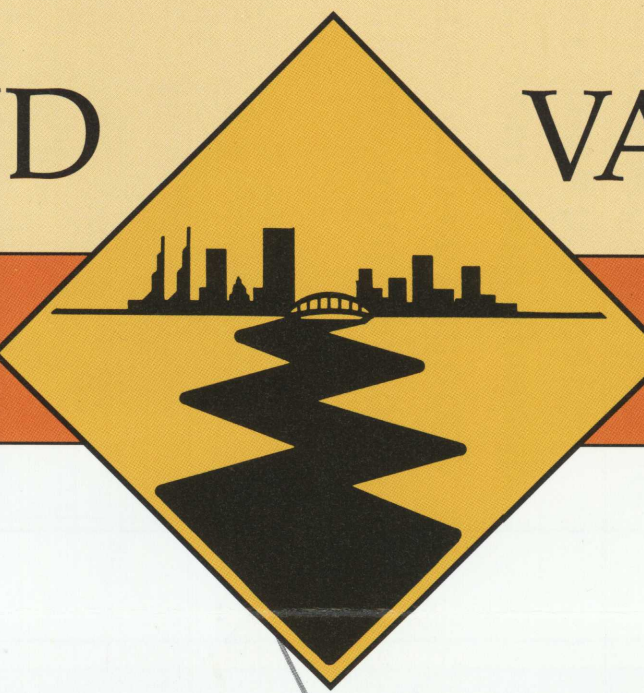


PORTLAND VANCOUVER TOXIC WATERS



SOURCES AND SYMPTOMS OF WATER POLLUTION... AND SOLUTIONS

POLLUTION can be as obvious as the styrofoam you see floating on the surface of the Willamette River. It is also as insidious as the toxins that are hidden at the bottom of the Columbia Slough. Water pollution can be as fleeting as an accidental burst of raw sewage that lingers overnight, or as persistent as DDT — banned in 1974, but still found in local fish and wildlife.

The sources of pollution are many and varied: pipes from factories and sewage treatment plants are the most conspicuous, but the chemicals washed into the run-off from city streets and farms pose as great a threat to the environment. From the water, pollution makes its way into fish, which are eaten by birds, animals and people.

The symptoms of water pollution in fish and wildlife are the inability to reproduce, diseases, genetic defects and death. These effects are measured by looking — not only in the water, the sediments, the fish and crayfish — but also at the health of the birds and animals that depend on water. The impacts of water pollution on people are similar, although more difficult to determine.

The solutions to the problems of water pollution rest first with the state and federal regulatory agencies. They are responsible for monitoring the levels and effects of chemicals, and for taking steps to restrict discharges of pollution to rivers, lakes, streams and groundwater. All of these agencies operate with inadequate funding, but political pressure also acts to prevent them from protecting the environment.

Solutions also lie with individuals — citizens who change their personal habits, who challenge the practices of businesses, and who pressure the government to do a better job protecting the environment.

We hope that this map provides you with some insight into the threats posed by water pollution. Each site is described by rivermile on the reverse, where there is more information on the dangers of water pollution and how you can be part of the solution.

**Columbia-Willamette
RIVERWATCH**
A Program of Northwest
Environmental Advocates