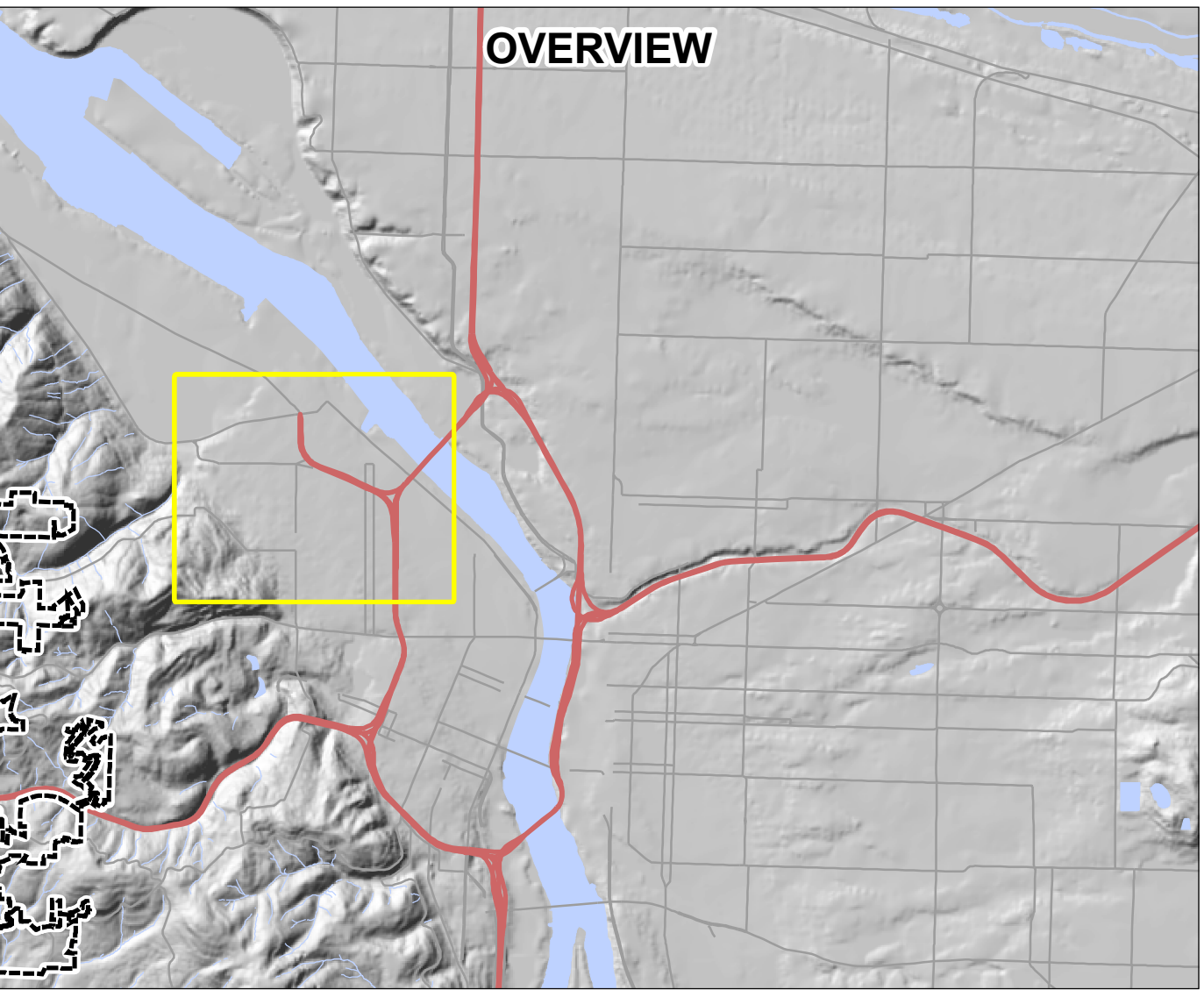
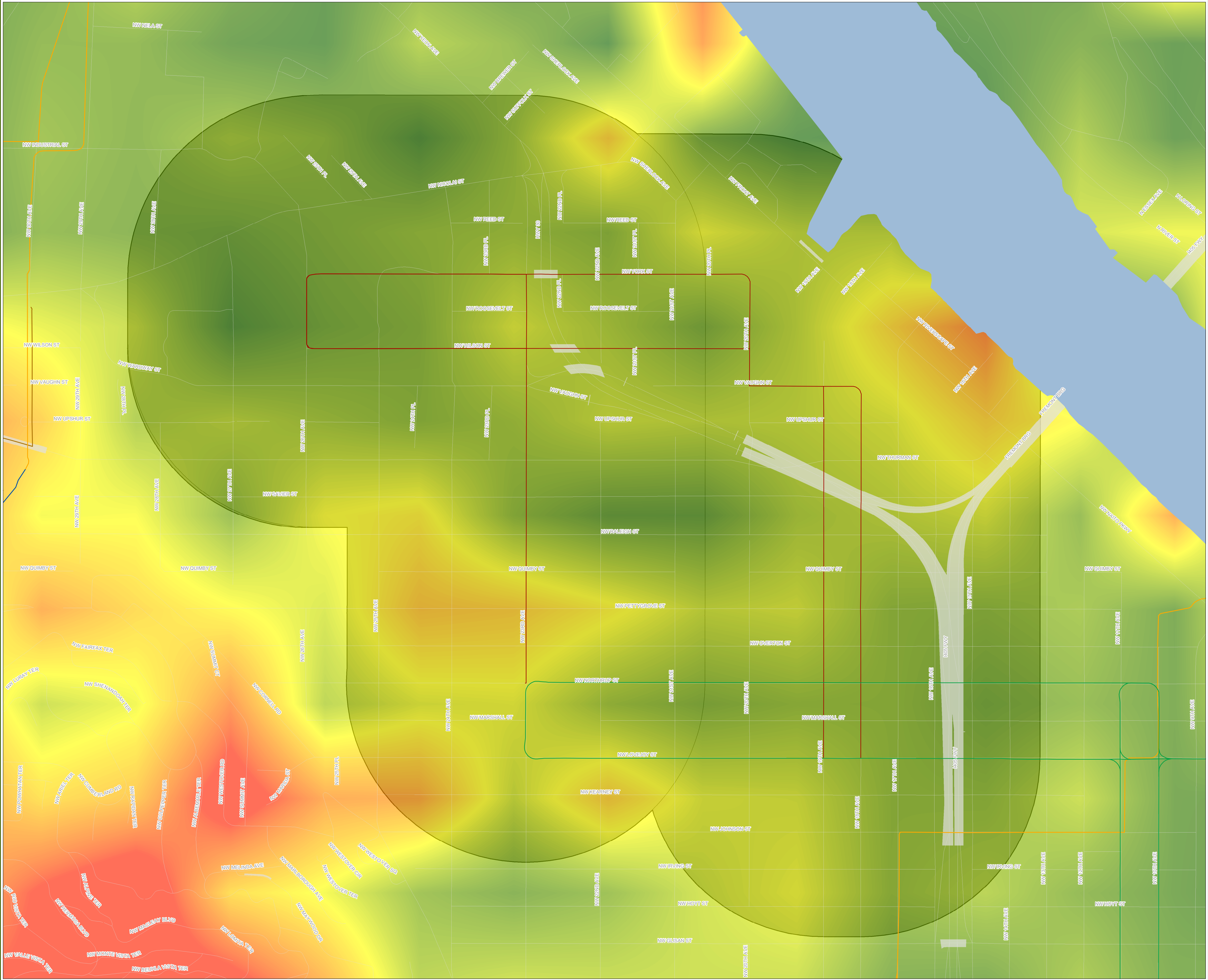





Produced by Asset Systems Management. Work Request ???? December 04, 2020 (MBURL(N) C:\Users\mburlin\Documents\ArcGIS\MP2H_SWSP_LandslideRP_West.mxd

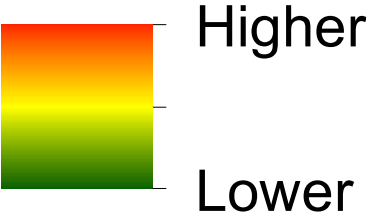


Legend

-  MP2H Study Area
-  ExistingStreetcar
-  StreetcarLines

Landslide Hazard

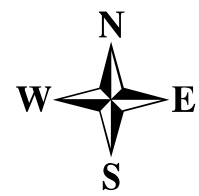
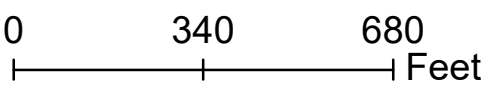
Risk Potential



The landslide hazard map examines the risk potential that unmanaged or ineffectively managed stormwater flows may exacerbate susceptible landslide conditions. The analysis is aggregated at a 10-acre scale and output values are relative to the city scale. This product is under development and part of the Bureau of Environmental Services Stormwater System Plan.

These maps are working drafts and for internal purposes only.

1 inch = 344 feet



MP2H Westside

Stormwater System Plan
Landslide Hazard Risk Potential
Working DRAFT



ENVIRONMENTAL SERVICES
CITY OF PORTLAND
working for clean rivers



Sheet No.

1 OF 1

Date Printed

12/4/2020