

## East Portland Workshop on Residential Outdoor Spaces – March 14<sup>th</sup>

East Portlanders are invited to join project staff in a discussion on March 14<sup>th</sup> on approaches to residential outdoor spaces in East Portland. This workshop will focus on discussing the merits of a proposal for deep rear setbacks in East Portland, intended to respond to community interest in keeping the centers of the area's large blocks greener and less built up (the centers of these blocks are sometimes the location of groves of Douglas fir trees). However, some community members have raised concerns that it is more important to have outdoor spaces located at the center of housing developments, surrounded by residential units, instead of being located at rear portions of multi-dwelling properties.

If you are interested in participating in this discussion and helping to shape the East Portland residential outdoor spaces proposals, please contact Bill Cunningham, project manager, using the contact information below. Event details:

### East Portland Workshop on Residential Outdoor Spaces

**Wednesday, March 14<sup>th</sup>, 6 to 8 p.m.**

16126 SE Stark Street (Rosewood Initiative Space)

TriMet: Bus #20, MAX Blue line

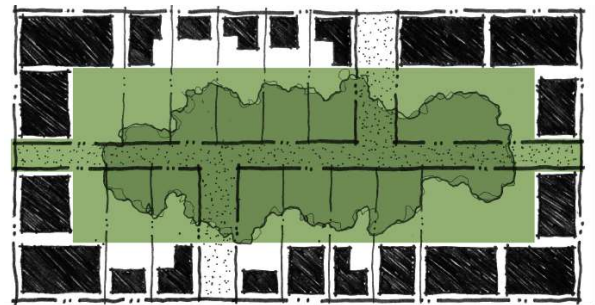
For more information on the Better Housing by Design project, see:

Project website: [www.portlandoregon.gov/bps/betterhousing](http://www.portlandoregon.gov/bps/betterhousing)

Contact: Bill Cunningham, 503-823-4203, [betterhousing@portlandoregon.gov](mailto:betterhousing@portlandoregon.gov)

### Proposal

**Continue East Portland mid-block open areas through requirements for deep rear setbacks.** This setback would be equivalent to 25% of site depth (50-foot setback on a 200-foot deep site) to keep the centers of blocks greener and less built up, providing space for trees and recreation.



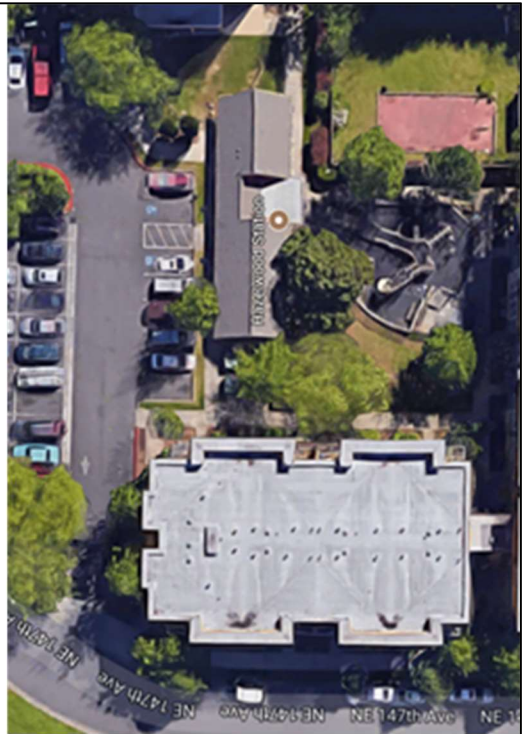
*Example of recent development*



*Example of 25% depth-of-site setback*

## Other Proposal Details

- *At least 50% of setback must be landscaped.*
- *Rest of setback can include buildings with indoor common area, or parking.*
- *Exemptions for tree preservation, corner sites, and sites less than 100' deep.*



See pages 36 – 37 of the Discussion Draft Staff Report for more information:

<https://www.portlandoregon.gov/bps/article/670123>