

# Portland Transit Mall IGA



*Right of Way Management & Permitting*

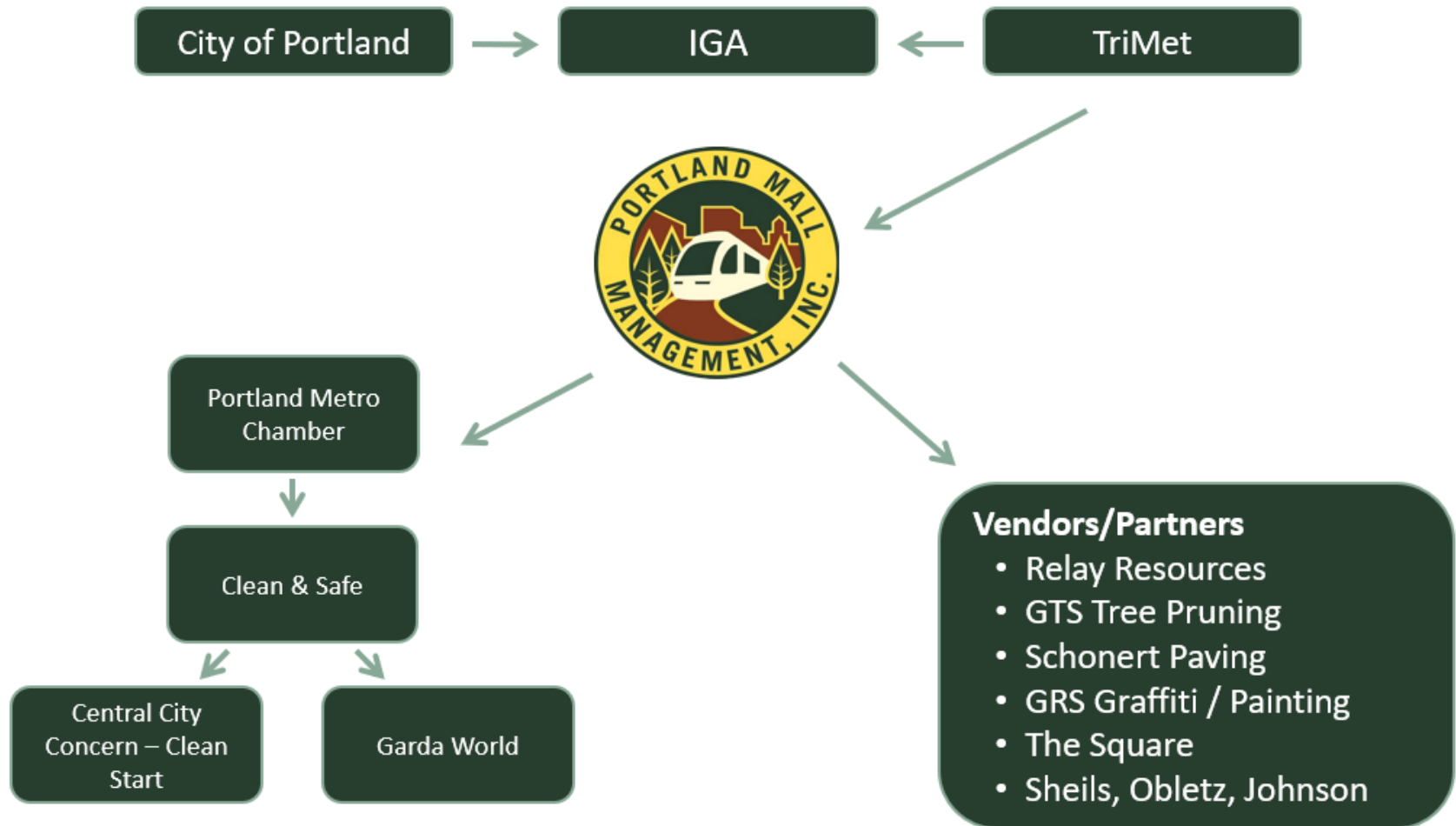


**PBOT**  
PORTLAND BUREAU OF TRANSPORTATION

[Portland.gov/transportation](http://Portland.gov/transportation)



# Organizational Relationships

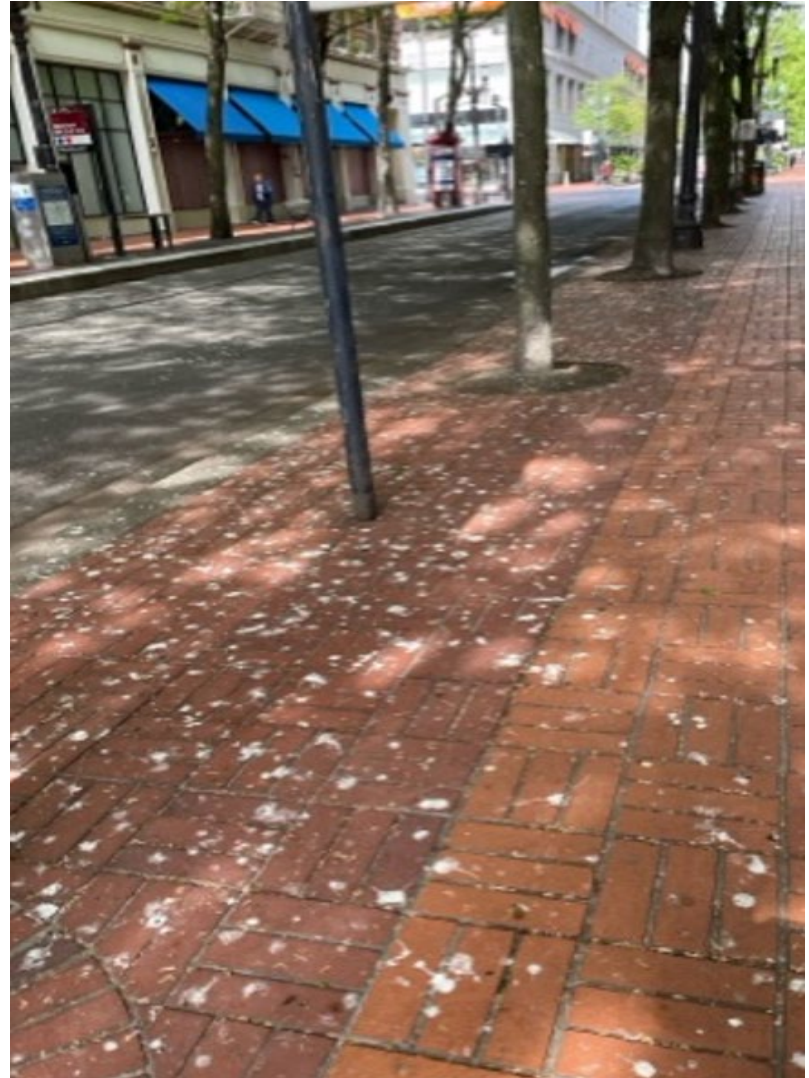




# Services Provided Through IGA with TriMet



**Crow Abatement and Cleaning**



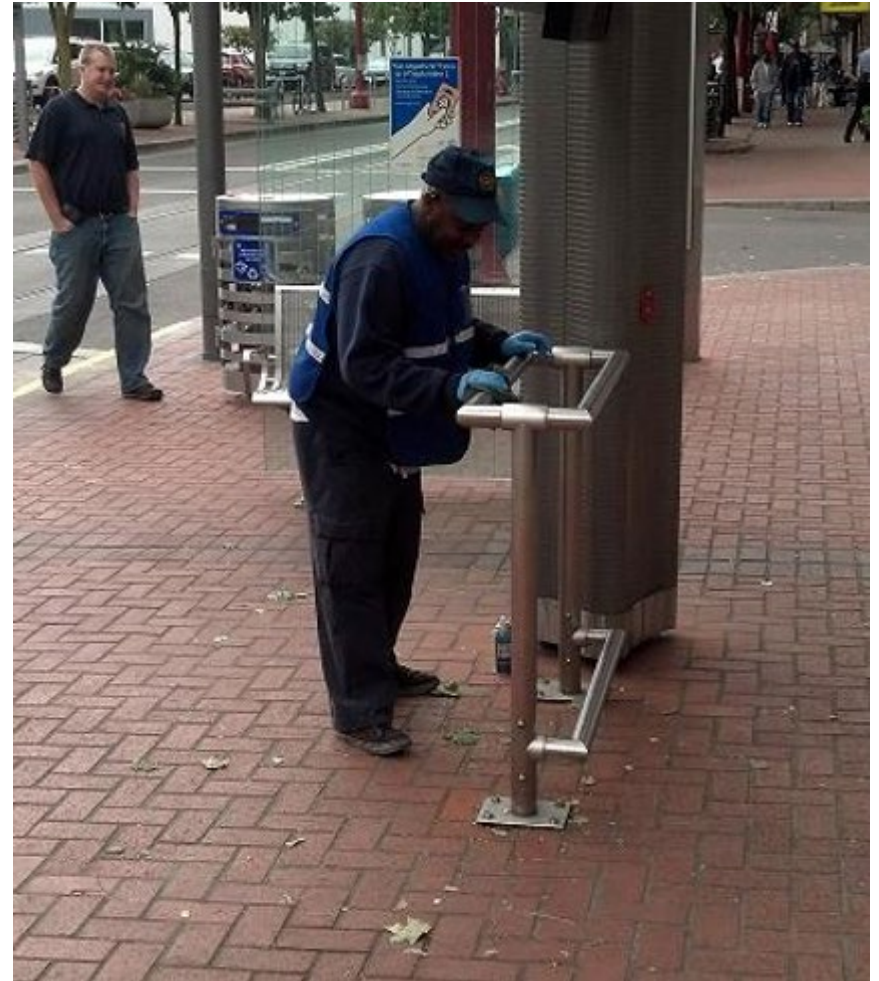
# Services Provided Through IGA with TriMet



## Intersection Paver Repair



# Services Provided Through IGA with TriMet



## Power Washing and Station Cleaning

# Services Provided Through IGA with TriMet



**Graffiti Removal**

# Funding Sources for PMMI

---

- TriMet:  $\cong$  \$10,001,000
- City  $\cong$  \$2,130,000
- Portland State  $\cong$  \$1,034,000
- Portland Metro Chamber  $\cong$  \$445,000
- Total 5-Year Contributions  $\cong$  \$13,610,000



# IGA Contributions by the City

---

- Enhanced In-Kind Services = \$5,931,235
- Major Maintenance Account = \$2,475,500
- Cash Payment to TriMet = \$2,129,506
- Total City Contributions = \$10,536,241