

working for clean rivers



BES On-Call Temporary Modeling Support Contracts

Ning Mao | BES Integrated Planning | Bureau of Environmental Services

May 8, 2024



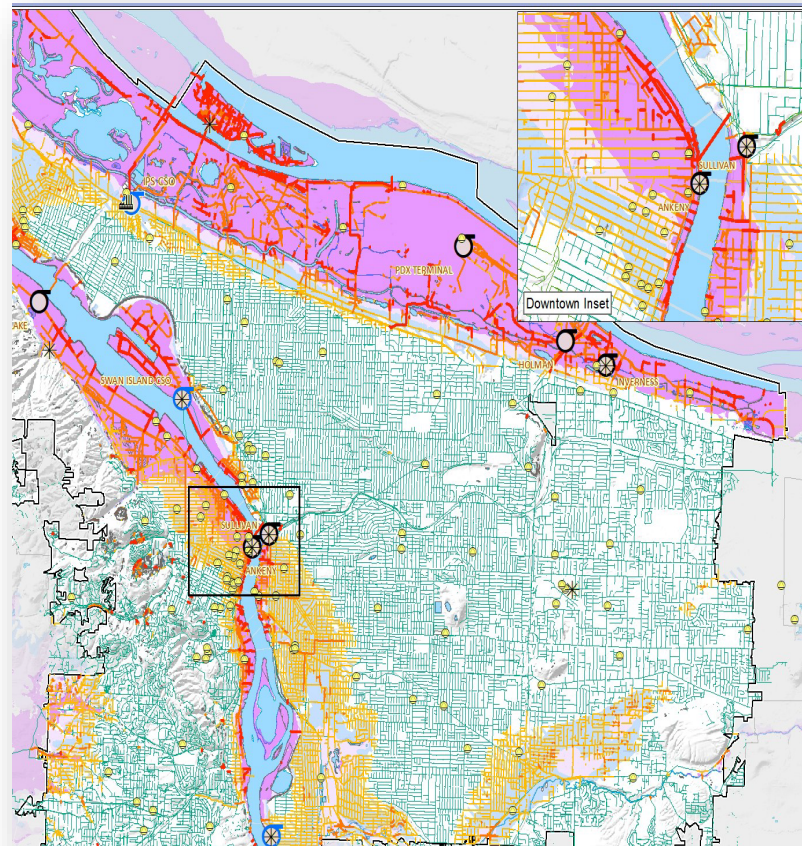
ENVIRONMENTAL SERVICES
CITY OF PORTLAND

MINGUS MAPPS, COMMISSIONER
DAWN UCHIYAMA, DIRECTOR



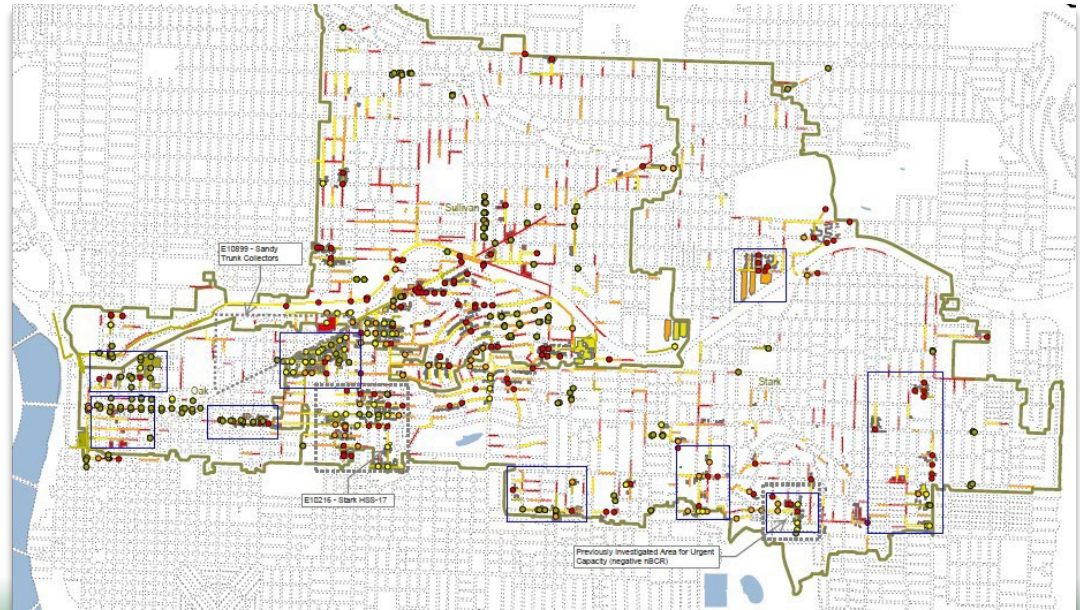
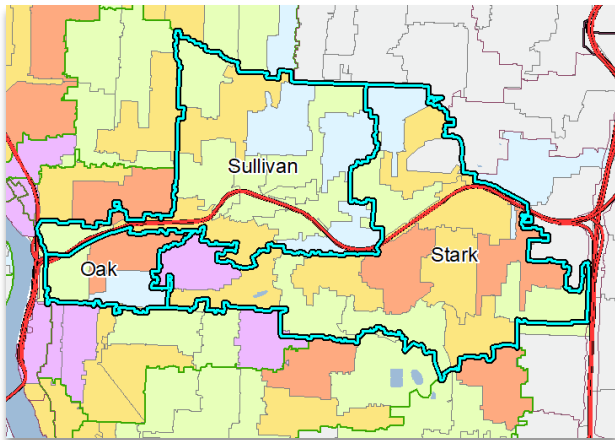
On-Call Temporary Modeling Staff to Deliver Work

- Supports collection system planning through to construction of capital projects
- Provides additional personnel during heavy and critical workload times for both CIP and non-CIP urgent modeling requests
- Supports City's sewer collection systems and treatment plants' maintenance and operations
- Supports risk assessments and development of long-term reinvestment needs for critical infrastructure
- Supports equity in contracting and workforce development recruitment and apprenticeships

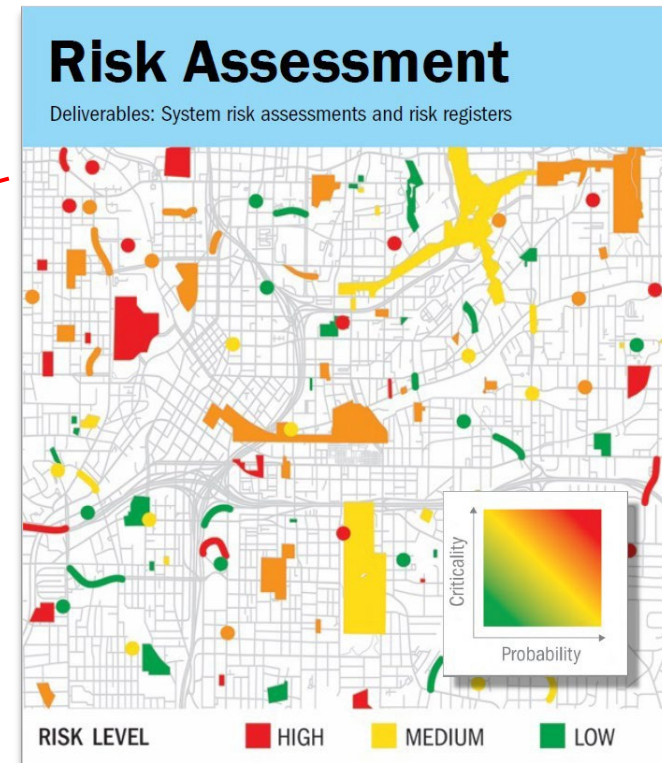
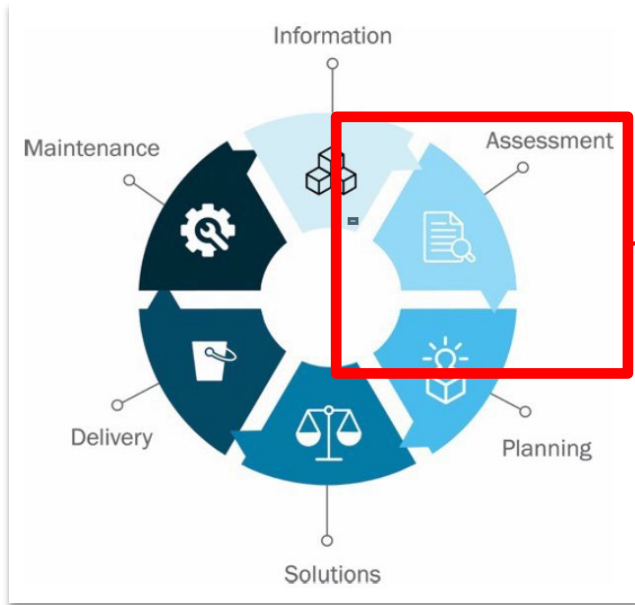


Contracts For On-Call Temporary Services

- Replace existing price agreements to continue needed temporary computer modeling and technical support
- \$11,250,000 over 5 years
- BUDGET: No Impact – currently adopted in CIP and Operating budgets
- Hydraulic & hydrologic modeling support for CIP and System Plan Development, Programmer and GIS Analyst support.



Context: Long-term Planning & Re-investment



Computer modeling informs:

- What and where the risks are in our systems
- If there are inequities in the risks in our systems
- Which risks are acceptable and which are not
- Recommend improvement strategies



Final Comments

- Consistent with past/ongoing scope and utilization
- Support BES computer modeling workloads for long-term planning, CIP project delivery, regulatory compliance needs, and various modeling service requests
- Avoids cost of delays and supports a proactive re-investment culture
- Enhanced workforce development, diversity and recruitment effort and opportunities

