

Portland Heights—800 feet High

This is the most famous street-car ride in America. These heights command a scenic prospect that is unrivaled, embracing a most wonderful view of lakes, islands, rivers, fertile valleys and virgin forests, high mountains and grand snow-capped peaks.

Take Portland Heights car on Washington Street. Transfer to and from any regular car.

PORTLAND

Is the principal city of the Northwest and has a population of 140,000. It is situated on the Willamette River, ten miles from that river's confluence with the Columbia, and 110 miles from the Pacific Ocean. It was founded in 1843 by the pioneers, Pettygrove and Lovejoy, and from the date of its birth has had a remarkable unchecked growth. The city is highly favored in location, being protected from winter storms by a range of high hills which skirts its western edge, while the summer heat is tempered by the cool breezes of the Pacific. Its climate is very pleasant, the temperature in winter hardly ever reaches freezing point, while in the summer it averages about seventy-five degrees. Roses and other flowers bloom practically all the year round.

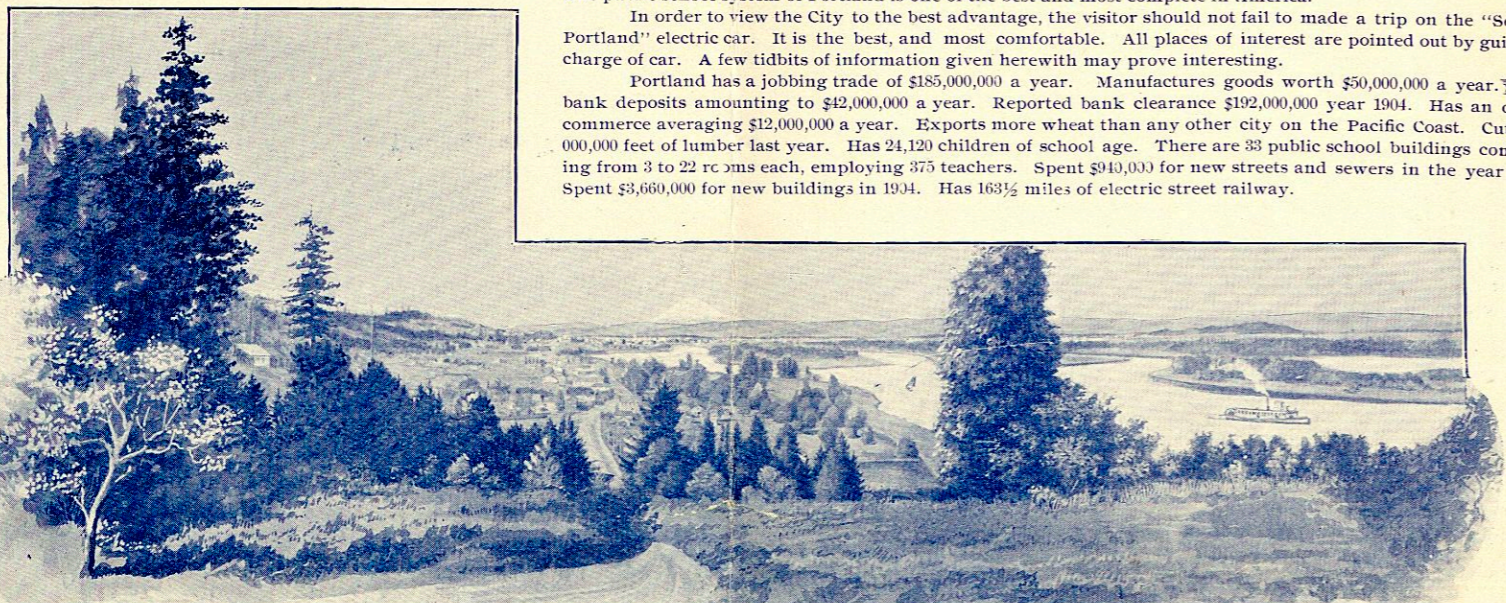
Portland is considered one of the healthiest cities in the Union, its death rate in 1904 being 9.5 per thousand of its population. One of the main factors in its healthfulness being the fact that it is supplied with the purest drinking water of any in the land, its water supply being piped from the base of Mount Hood, a distance of fifty miles. The City holds commercial intercourse with the whole world. Hundreds of vessels of all Nations, ranging in tonnage from 500 to 5,000, are annually loaded at the port. It is besides the terminal of the Northern Pacific, Union Pacific and Southern Pacific Railroads. The chief export commodities are lumber, flour and grain.

Portland has every social, educational and religious advantage which a modern city naturally enjoys. The public school system of Portland is one of the best and most complete in America. In order to view the City to the best advantage, the visitor should not fail to make a trip on the "Seeing Portland" electric car. It is the best, and most comfortable. All places of interest are pointed out by guide in charge of car. A few tidbits of information given herewith may prove interesting.

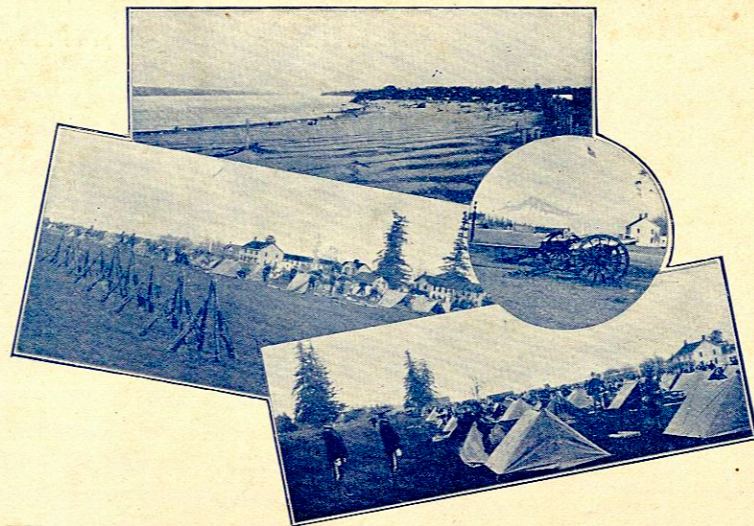
Portland has a jobbing trade of \$185,000,000 a year. Manufactures goods worth \$50,000,000 a year. Has bank deposits amounting to \$42,000,000 a year. Reported bank clearance \$192,000,000 year 1904. Has an ocean commerce averaging \$12,000,000 a year. Exports more wheat than any other city on the Pacific Coast. Cut 413,000,000 feet of lumber last year. Has 24,120 children of school age. There are 33 public school buildings containing from 3 to 22 rooms each, employing 375 teachers. Spent \$940,000 for new streets and sewers in the year 1904. Spent \$3,660,000 for new buildings in 1904. Has 163½ miles of electric street railway.

ELEVATION OF MOUNTAIN PEAKS AND THEIR DISTANCES FROM PORTLAND

	Elevation Feet	Distance Miles
Mount Hood	11,225	50.1
Mount Rainier.....	14,256	102.8
Mount St. Helens.	10,000	53.0
Mount Adams.....	12,470	75.0
Mount Jefferson...	10,200	60.2



RIVERVIEW ROAD AND CEMETERY.



A Trip to Fort and City of Vancouver, Wash.

This is one of the most delightful suburban trips imaginable; a ride of seven miles to the banks of the Imperial Columbia River; passing en route a fine residence section, fruit and stock farms, Columbia Beach and the famous Columbia Slough fishing grounds, and also a trip of one mile on the Columbia by steam ferry-boat to one of the very earliest settlements on the original Oregon Territory.

VANCOUVER was first established in 1792 by Lieutenant Vancouver, a British explorer, becoming in 1806 a Hudson Bay trading post under the noted McLoughlin. On the 13th of May, 1849, Vancouver was founded as a post of the United States, and the Stars and Stripes floated to the breeze for the first time on the banks of the Columbia. It was then named Columbia Barracks, but in 1853 it was again designated Fort Vancouver. Here many of the men who have carved their names in the annals of our country, Grant, Sherman, Sheridan and others passed their apprenticeship in the art of war.

It is well worth the trip to view the broad esplanades and parade grounds, which are beautifully kept, and the soldiers barracks and officers quarters. Visitors are always allowed. The soldiers go through their routine drill every evening except Saturdays, Sundays and Holidays, at 5:00 o'clock, weather permitting.

The town of Vancouver is also very interesting and abounds in historical interest. Don't fail to see the famous tree "Balm of Gilead," which is the starting point of all surveys in the State of Washington.

Cars Leave Portland, Corner Second and Washington Streets, FOR Vancouver as follows:

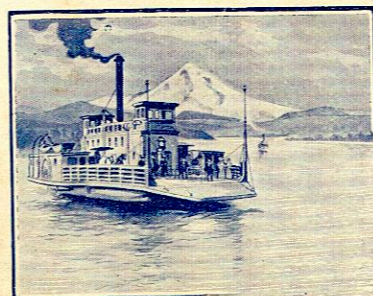
A. M.	*6.20	*7.00	7.40	8.20	9.00	9.40
	10.20	11.00	11.40			
P. M.	12.20	1.00	1.40	2.20	3.00	
	3.40	4.20	5.00	5.40	6.20	
	7.00	7.40	9.00	†10.30		
						†11.30

Ferry Leaves Vancouver to Connect With Cars FOR Portland as follows:

A. M.	*6.40	*7.20	8.00	8.40	9.20
	10.00	10.40	11.20	12.00	M
P. M.	12.40	1.20	2.00	2.40	3.20
	4.00	4.40	5.20	6.00	6.40
	7.20	8.00	9.30	†11.00	

and †12.00 midnight connecting with car to Woodlawn only.

On third Monday in each month last car from Portland leaves at 7:00 p. m., and last ferry-boat leaves Vancouver for Portland at 7:20 p. m.



One hour and forty minutes run for round trip. Round trip ticket 45 cents.

*Daily except Sundays. †Daily except Mondays. P. M. Black Figures.

PORTLAND CONSOLIDATED RAILWAY CO.'S

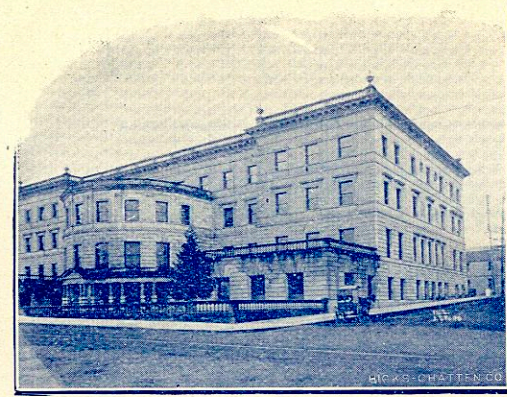
"Seeing Portland" Observation Cars



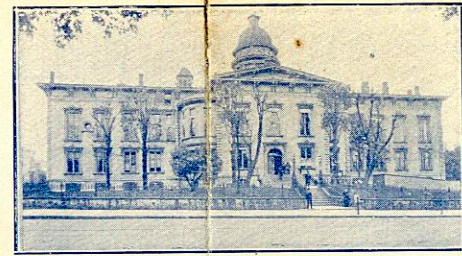
CAR STARTS DAILY FROM THIRD AND ALDER STREETS

10:00 A. M., 2:00 P. M.
2:30 P. M.

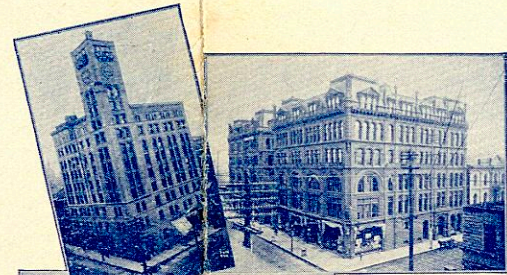
FARE 50 CENTS



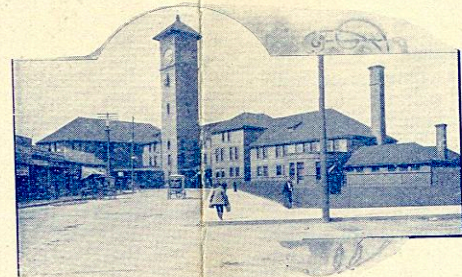
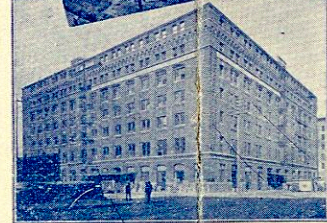
PORTLAND CITY HALL



MULTNOMAH COUNTY COURTHOUSE



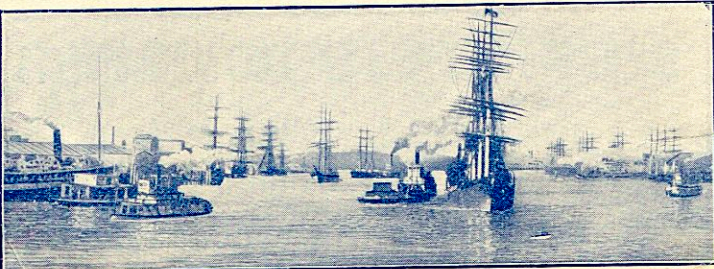
OFFICE BUILDINGS



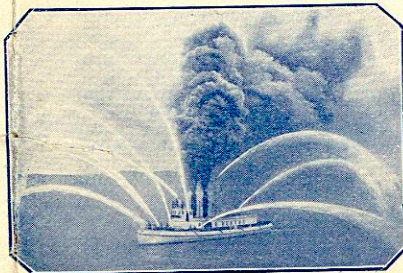
UNION DEPOT

Points of Interest and Suburban Trips on Lines of Portland Consolidated Railway Company

- Vancouver Barracks
 - Riverview Cemetery
 - Lewis and Clark Exposition
 - City Park
 - City Hall Museum
 - Public Library Building
 - Saw Mills
 - Portland Heights
 - Willamette Heights
 - Mount Tabor
 - St. Johns
 - Woodstock
 - Montavilla
 - Irvington
- All 5-Cent Fare
Except Vancouver Branch



PORTLAND HARBOR



FIREBOAT "GEO. H. WILLIAMS"

"SEEING PORTLAND" OBSERVATION CARS

DAILY AND SUNDAY TOURS

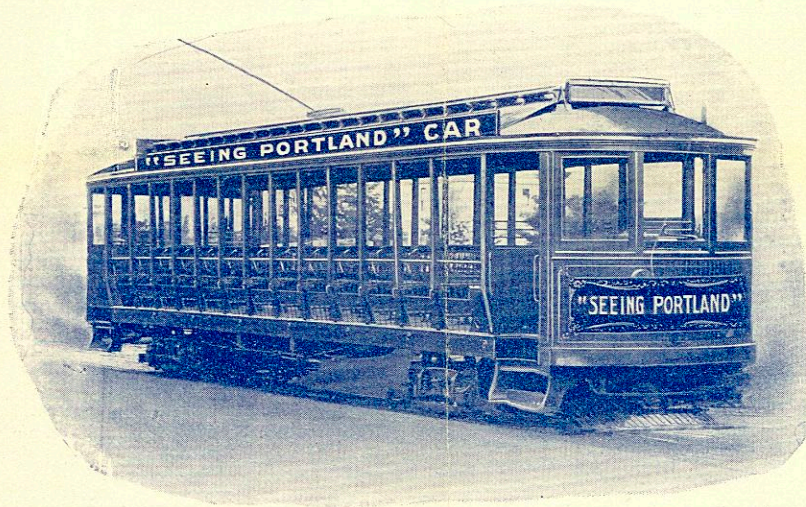
CAR LEAVES THIRD AND ALDER STREETS

10:00 A. M.
2:00 P. M.
2:30 P. M.

FARE 50 CENTS



VIEW FROM MT. TABOR

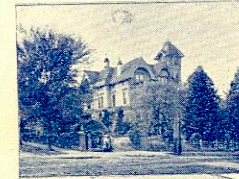


TOURISTS AND VISITORS

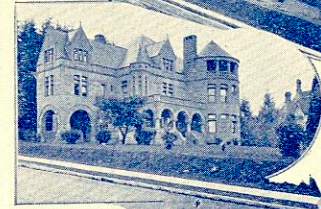
In order to view the City of Portland to best advantage should not fail to make a trip on the Portland Consolidated Ry. Co's. "Seeing Portland" Observation Car. It gives the stranger a quick, economical, instructive and comfortable means of viewing the city.

The routes traversed by these cars are through the best residence and business portion of Portland, including the Willamette Heights and the famous Portland Heights. It gives the passenger a fine opportunity to view the various manufacturing and commercial industries, Portland Harbor and its fleet of river steamers and large vessels of all nations, the wharves, docks and bridges along the Willamette River; different schools and colleges; numerous edifices of worship, palatial residences and cozy homes; principal hotels and theaters, Public Library, City Hall, Court House, Chamber of Commerce, in fact all public buildings which adorn the city; and in addition, from the various elevations reached by the car, marvelous and beautiful birds-eye views may be had of the snow-capped mountains, the city and its environs, and also of the Lewis and Clark Exposition Grounds.

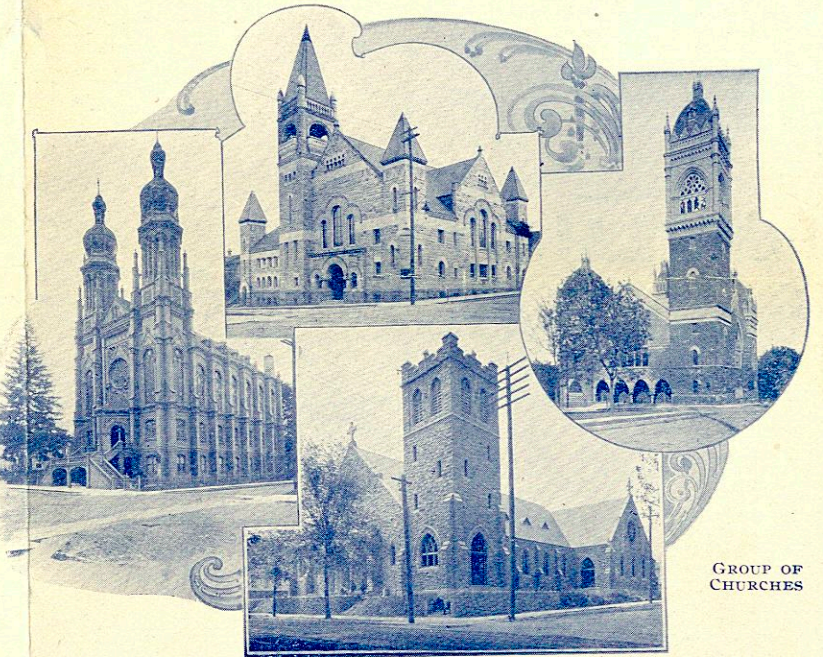
Principal places of interest along the route are pointed out and explained by the guide accompanying the car. The ride occupies about two and one half hours and the fare for the trip is 50 cents.



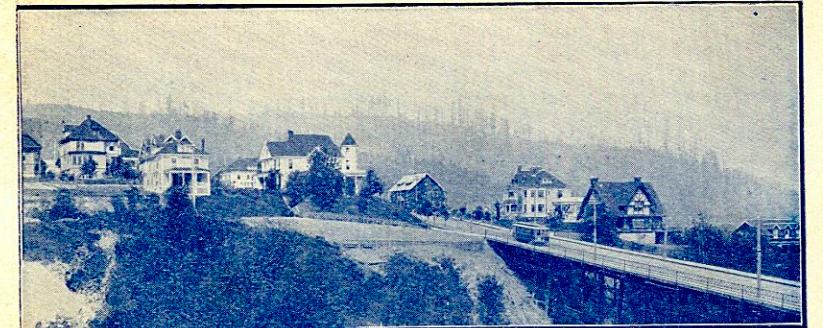
MODERN RESIDENCES



CHAMBER OF COMMERCE BUILDING

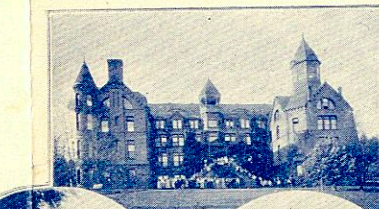


GROUP OF CHURCHES



WILLAMETTE HEIGHTS

Situated in the northern part of the city; overlooking the Willamette River and the Exposition Grounds, and affording a fine view of the snow-capped mountains.



ST. HELEN'S HALL. ARMORY. ST. VINCENT'S HOSPITAL.

