



# Portland HLC Informational Briefing

October 9, 2023

**Hayli Reff**

Cultural Resources Lead

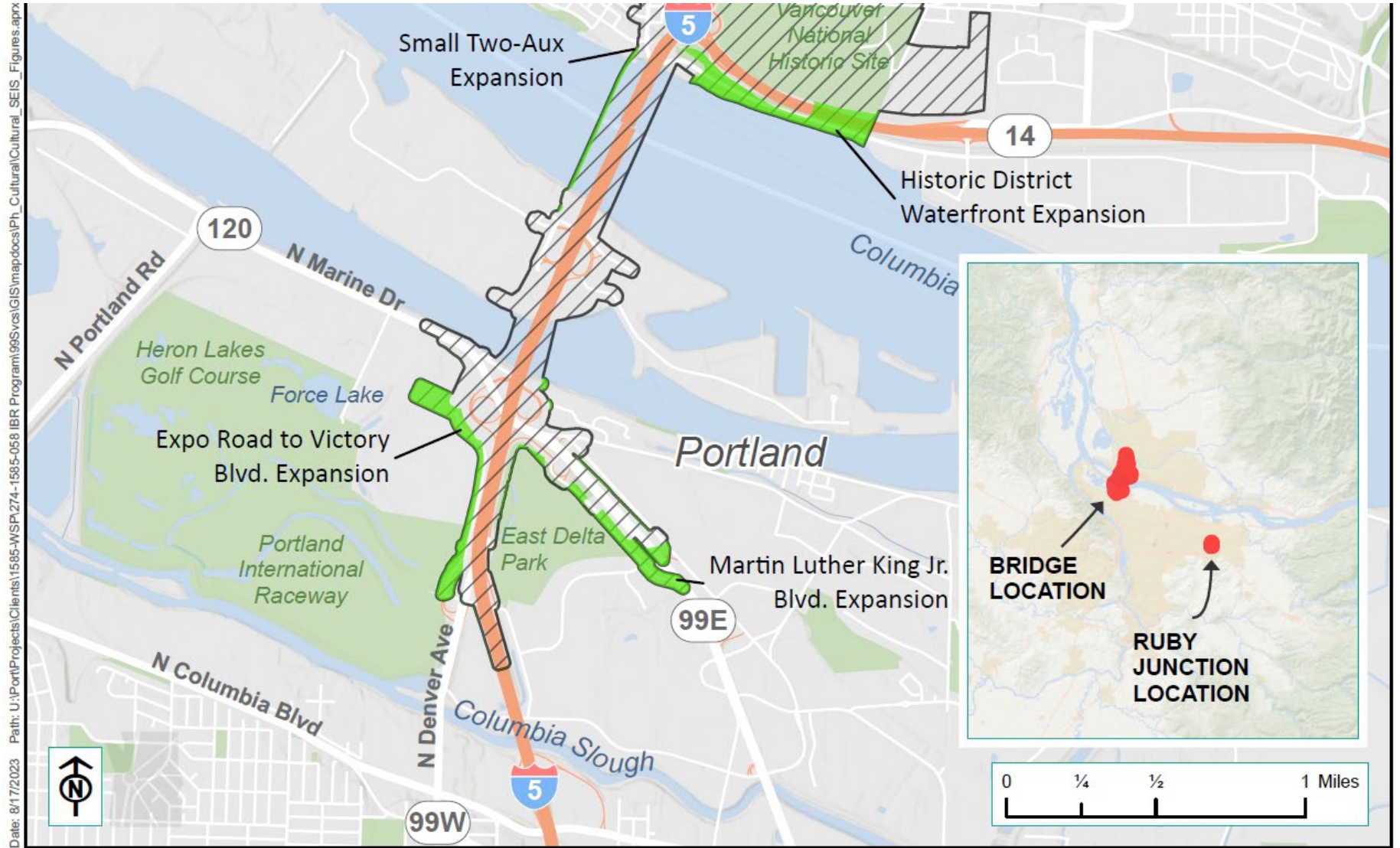
# Agenda

1. APE Overview
2. Section 106
3. Portland DOEs/FOEs
4. Schedule/Next Steps
5. Questions

# APE Overview



# APE Portland



Source: ODOT, WSDOT, Mapbox, OpenStreetMap



# Section 106 Overview

- ▶ National Historic Preservation Act of 1966
- ▶ Consulting Parties
- ▶ Role of the Consulting Parties

# Section 106 Documentation Updates

- ▶ **Historic Built Environment Baseline Survey Reports**
- ▶ **Section 106 Determinations of Eligibility (DOEs)**
  - Completed for:
    - Properties recommended potentially eligible in the Baseline
    - Properties determined eligible 10+ years previously
    - Properties that would be partially or completely removed by the IBR program
  - Not completed for:
    - Properties recommended not eligible in the Baseline
    - Properties with recent SHPO/DAHP determinations of eligibility
    - Properties listed in the National Register of Historic Places

# Section 106 Documentation Updates

- ▶ Historic Built Environment Baseline Survey Reports
- ▶ Section 106 Determinations of Eligibility (DOEs)

	Determined Eligible		Determined Not Eligible
	IBR Program	Previous Documentation	IBR Program
Oregon Properties	8	0	19
Washington Properties	13	9	33
Interstate Properties	1	2	0
Totals	22	11	52



# Section 106 Documentation Updates

- ▶ **Historic Built Environment Baseline Survey Reports**
- ▶ **Section 106 Determinations of Eligibility (DOEs)**
- ▶ **Section 106 Findings of Effect (FOEs)**
  - **Completed for:**
    - Properties determined eligible in DOEs prepared for the IBR Program
    - Properties with recent SHPO/DAHP determinations of eligibility
    - Properties listed in the National Register of Historic Places
  - **Possible findings:**
    - Adverse Effect
    - No Adverse Effect
    - No Effect

# Section 106 Documentation Updates

- ▶ Historic Built Environment Baseline Survey Reports
- ▶ Section 106 Determinations of Eligibility (DOEs)
- ▶ Section 106 Findings of Effect (FOEs)

	No Effect	No Adverse Effect	Adverse Effect	Totals
Oregon Properties	2	2	4	8
Washington Properties	6	9	3	18
Interstate Properties	0	1	2	3

# Portland Properties within the APE

## NRHP-listed Portland properties within the APE:

- ▶ Interstate Bridge (northbound) [adverse effect]

## NRHP-eligible Portland properties within the APE identified through Section 106 process:

- ▶ Interstate Bridge (southbound) [adverse effect]
- ▶ Harbor Shops (Anchor Bar and Dottys) [adverse effect]
- ▶ Jantzen Beach Moorage [adverse effect]
- ▶ Jantzen Beach Water Tank & Pump House [adverse effect]
- ▶ ODOT Permit Center [adverse effect]
- ▶ Columbia Slough Drainage Districts HD [no adverse effect]
- ▶ Portland Assembly Center [no adverse effect]
- ▶ East Vanport Commercial Center [no effect]
- ▶ Hayden Island Yacht Club Clubhouse [no effect]

# Interstate Bridge (NB)

- ▶ **Constructed 1917/1958**
- ▶ **Listed on NRHP in 1982**
- ▶ **Significant under Criteria A and C**
- ▶ **POS: 1917-1958**
- ▶ **Finding of Effect: adverse effect**



# Interstate Bridge (SB)

- ▶ Constructed 1958
- ▶ Significant under Criteria A and C
- ▶ POS: 1958-1966
- ▶ Finding of Effect: adverse effect



# Harbor Shops (Anchor Bar and Dottys)

- ▶ 11915 N Center Ave.
- ▶ Constructed 1978
- ▶ Significant under Criteria A and C
- ▶ POS: 1978
- ▶ FOE: adverse effect



# Jantzen Beach Moorage

- ▶ Constructed 1958
- ▶ Significant under Criterion A
- ▶ POS: 1958-1977
- ▶ FOE: adverse effect



# Jantzen Beach Moorage

- ▶ **Constructed 1958**
- ▶ **Significant under Criterion A**
- ▶ **POS: 1958-1977**
- ▶ **FOE: adverse effect**





# Jantzen Beach Water Tank & Pump House

- ▶ Constructed 1968
- ▶ Significant under Criteria A and C
- ▶ POS:  
1968-1980 (Crit. A)  
1968 (Crit. C.)
- ▶ FOE: adverse effect



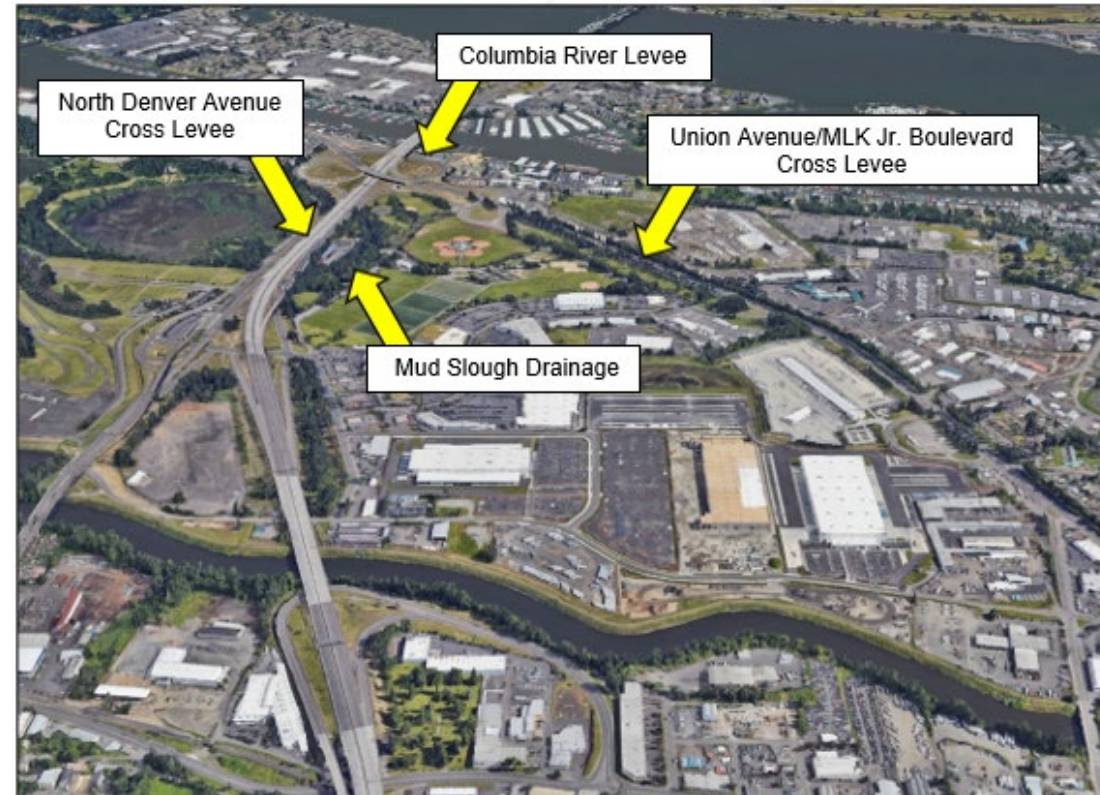
# ODOT Permit Center

- ▶ Constructed 1959
- ▶ Significant under Criteria A and C
- ▶ POS:  
1959-1966 (Crit. A)  
1959 (Crit. C)
- ▶ FOE: adverse effect



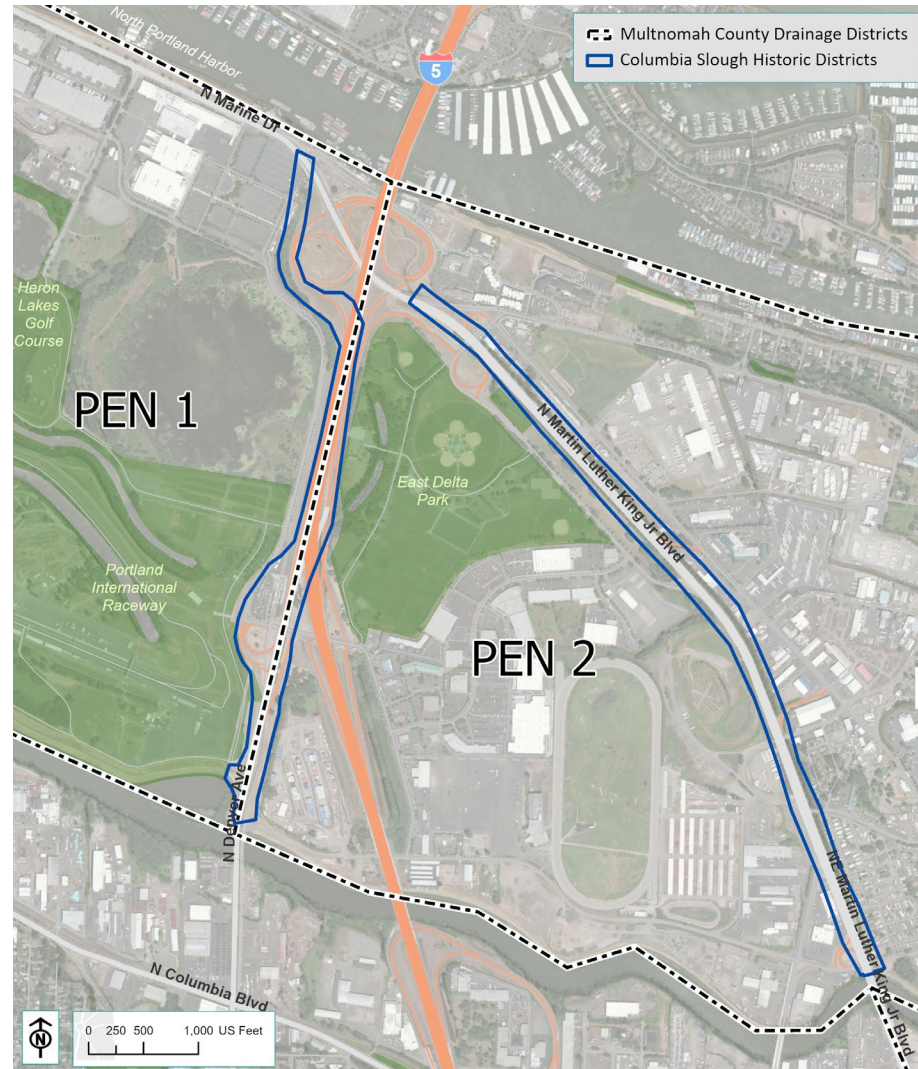
# Columbia Slough Drainage Districts HD

- ▶ Constructed 1916/1948
- ▶ Significant under Criteria A and C
- ▶ POS: 1916-1961
- ▶ FOE: no adverse effect



# Columbia Slough Drainage Districts HD

- ▶ Constructed 1916/1948
- ▶ Significant under Criteria A and C
- ▶ POS: 1916-1961
- ▶ FOE: no adverse effect



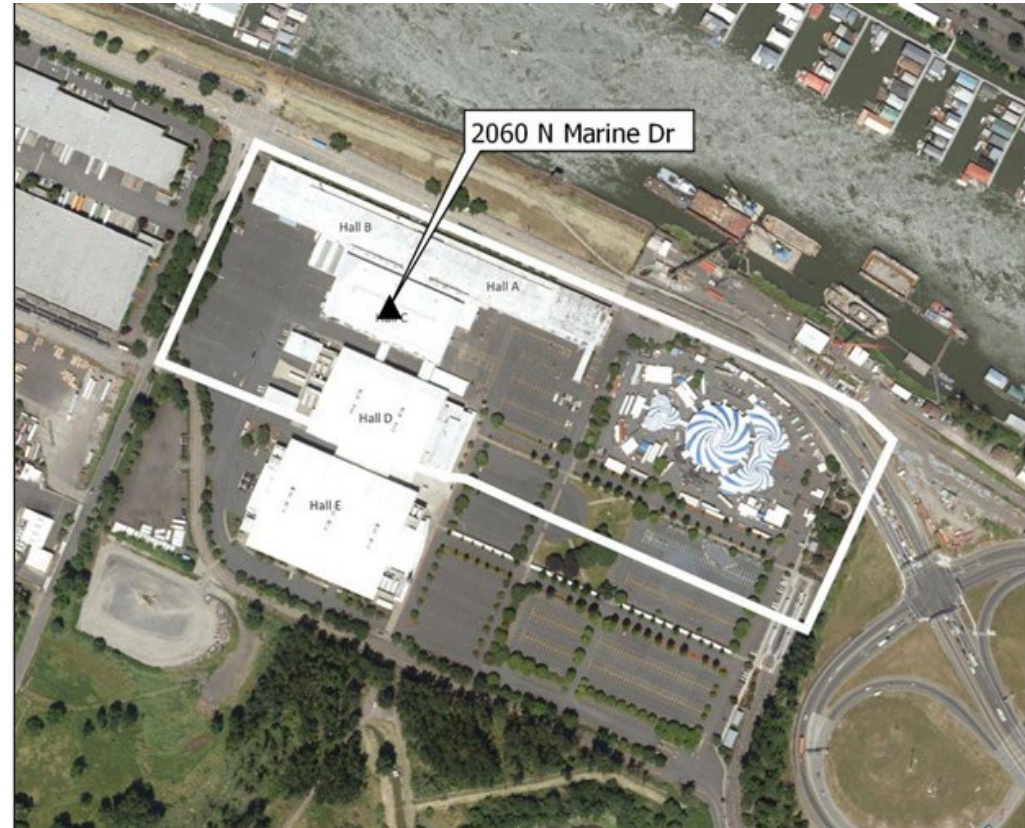
# Portland Assembly Center

- ▶ Constructed 1924-2001
- ▶ Significant under Criterion A
- ▶ POS: 1942
- ▶ FOE: no adverse effect



# Portland Assembly Center

- ▶ Constructed 1924-2001
- ▶ Significant under Criterion A
- ▶ POS: 1942
- ▶ FOE: no adverse effect



# East Vanport Commercial Center

- ▶ Constructed 1943
- ▶ Significant under Criterion A
- ▶ POS: 1943-1960
- ▶ FOE: no effect



# Hayden Island Yacht Club Clubhouse

- ▶ Constructed 1972
- ▶ Significant under Criteria A and C
- ▶ POS:  
1972-1973 (Crit. A)  
1972 (Crit. C)
- ▶ FOE: no effect





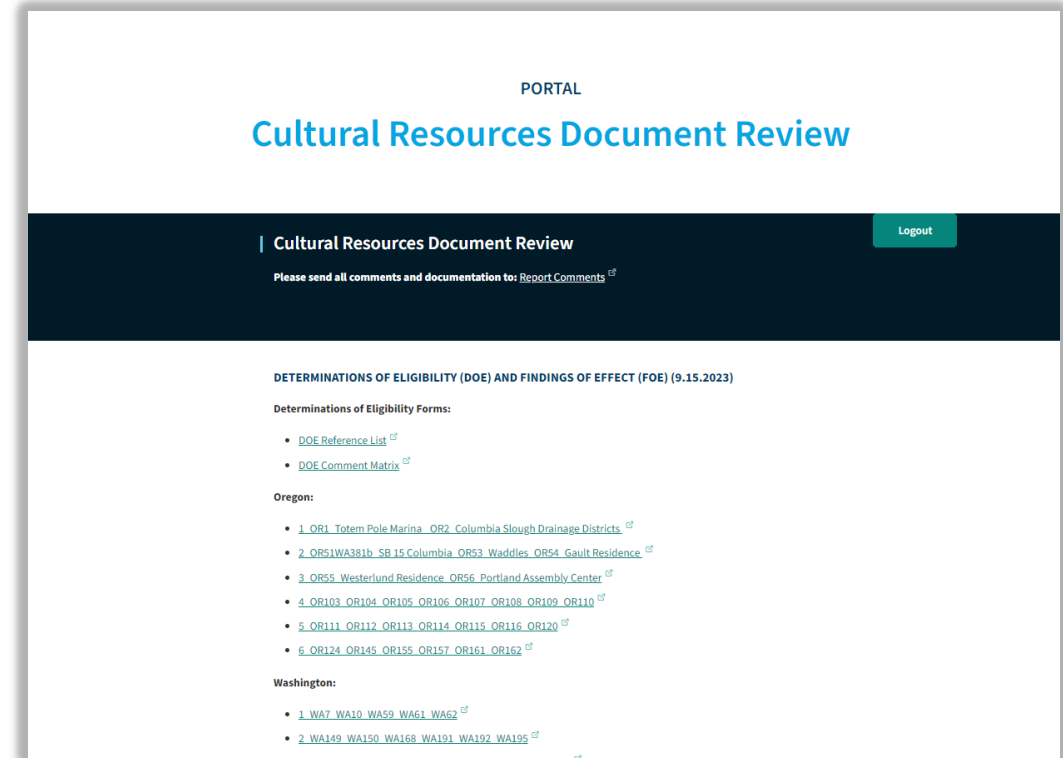
# Section 106 Documentation - Access

▶ IBR Portal (<https://www.interstatebridge.org/4392>)

- Username: IBRConsultingParty
- Password: Sect106Review!

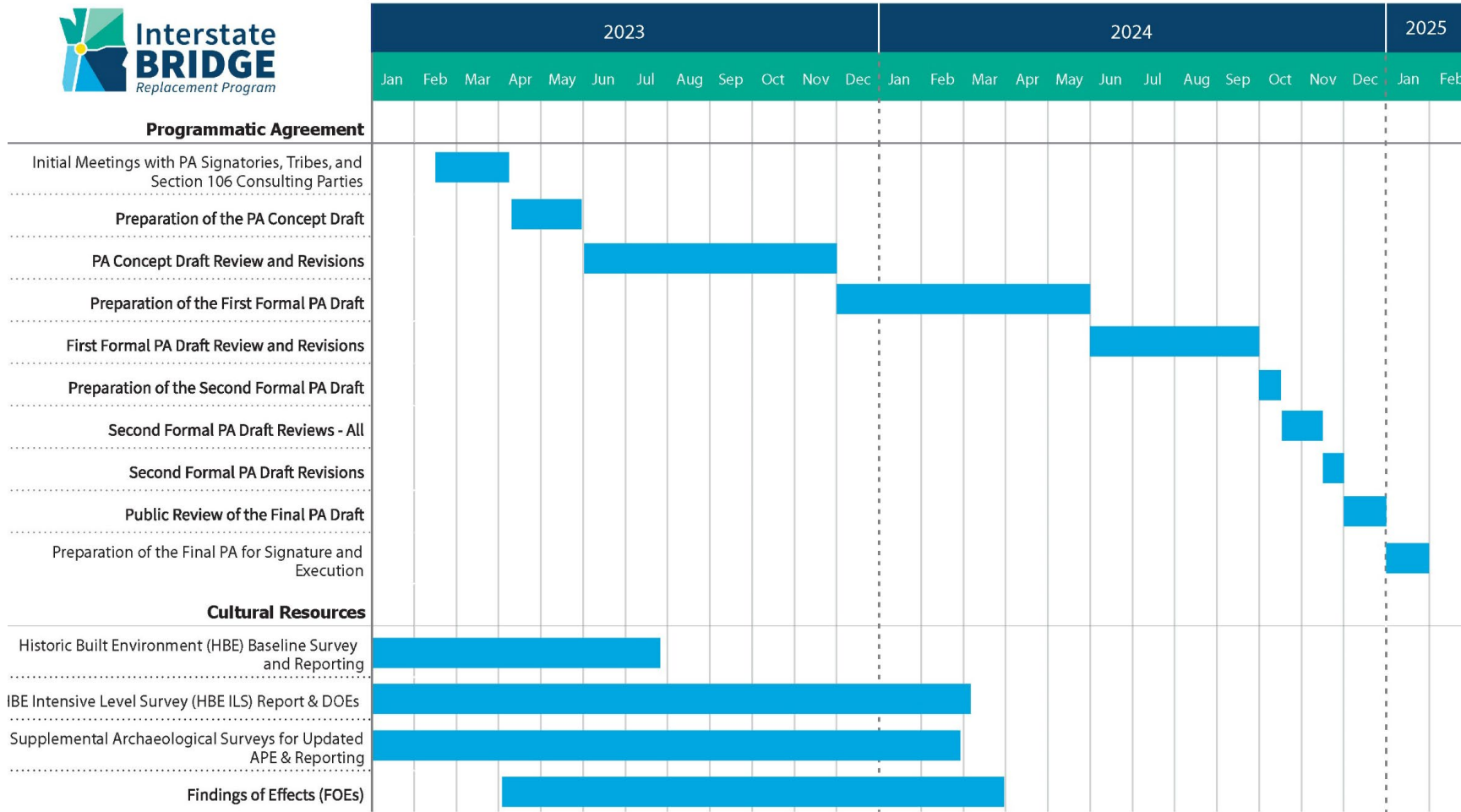
▶ Available documents:

- DOEs
- DOE comment matrix
- FOEs
- FOE comment matrix



Interstate Bridge Replacement Program Portal, <https://www.interstatebridge.org/4392>

# Schedule: PA and Cultural Resources



# Next Steps

- ▶ **Incorporate feedback on Determinations of Eligibility and Findings of Effect**
- ▶ **Publish Supplemental Draft Environmental Impact Statement (DSEIS)**
- ▶ **Begin discussions about resolving Adverse Effects to historic properties**
- ▶ **Ongoing PA consultation**



# Feedback and Discussion

- ▶ What questions or feedback do you have?



For more information contact:

[info@interstatebridge.org](mailto:info@interstatebridge.org)

360-859-0494 or 503-897-9218

888-503-6735

<https://www.interstatebridge.org>

Follow us on social: @IBRprogram



# Thank you!

[www.interstatebridge.org](http://www.interstatebridge.org)