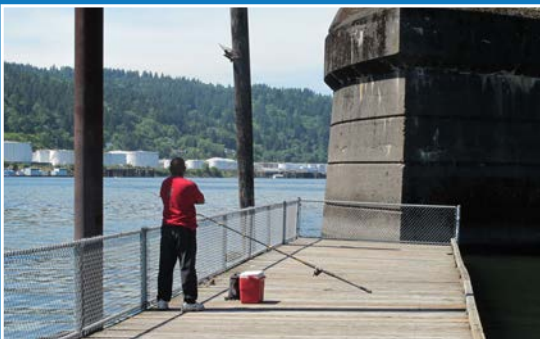




# Portland Harbor Program 2019 Year-End Report Updates and Accomplishments

January 2020



The City's Portland Harbor work in 2019 focused on setting the stage for the latest phase of the cleanup, remedy design.

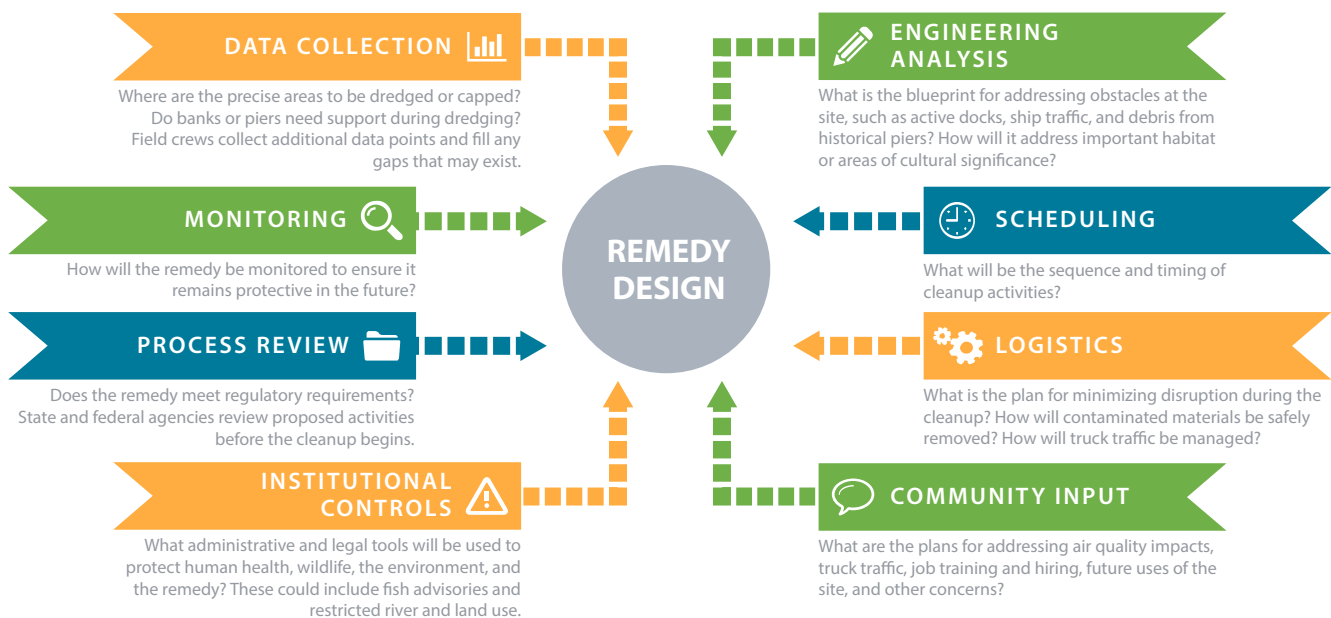
## TIMELINE FOR PORTLAND HARBOR CLEANUP



During remedy design, engineers determine how they will implement EPA's approved cleanup plan (also known as the Record of Decision). Critical details are nailed down in this phase to ensure the cleanup will be effective and can be completed with minimal impacts to neighbors, nearby businesses, and the environment.

## WHAT HAPPENS IN REMEDY DESIGN?

A lot of planning work happens during the remedy design phase as engineers determine how to implement EPA's approved cleanup plan. Critical details are nailed down to make sure the cleanup will be effective and can be completed with minimal impacts to neighbors, nearby businesses, and the environment. This step is vital to getting us to the goal of a healthy river.



# Portland Harbor at a Glance



NAIM HASAN PHOTOGRAPHY

The Portland Harbor Superfund Site is located in the lower Willamette River. Because of its key location on the Willamette River, the harbor has a long history of shipping, industrial, and commercial activity. This area of the river also has historical, natural, and cultural resource significance. It is a critical corridor for migrating animals including endangered salmon and steelhead and is a popular recreation area.



**10 MILES**  
Size of the site, which runs from south of Sauvie Island nearly to the Broadway Bridge

**Nearly 150**  
Potentially responsible parties

**64**  
Contaminants of concern to human health and the environment

**3 million\***  
cubic yards  
Contaminated material to be removed from the river bottom & banks

**30 Years\***  
Amount of time to reach cleanup goals

**\$1.05 Billion\***  
Cost to clean up Portland Harbor Superfund

\*According to EPA's 2017 Record of Decision

# Milestones and Updates

## City of Portland and State of Oregon Established Successful Innovative Approach to Expedite Remedy Design Sitewide

At the beginning of the year the City and State partnered to provide a funding opportunity of up to \$24 million to parties that committed to do remedy design work. This innovative approach allowed the City and State to pool resources to more efficiently use public dollars, gain joint legal protections, and support EPA in getting to cleanup action more quickly. EPA informed us at the end of the year that nearly 20 parties took advantage of the funding opportunity representing six areas. Several of those agreements are in the final stages of negotiations, which EPA estimates will be complete by the end of January. These new areas bring the total to just over half or 52% of the entire 10-mile site into active remedy design. This new and creative approach resulted in real progress and can be used as a model at other Superfund sites across the nation. It also demonstrates what public agencies can achieve when working together to accomplish many goals.



Willamette Cove

NAIM HASAN PHOTOGRAPHY

## Design Agreement Made for Willamette Cove In-Water Cleanup

The Willamette Cove area, located on the east side of the River between the St. John's and Railroad bridges, needs environmental cleanup in both the upland portion and the adjacent in-water portion of the Willamette River. The Port of Portland and Metro under Oregon Department of Environmental Quality (DEQ) oversight are conducting

the upland area cleanup. The in-water portion is a separate cleanup that will be overseen by EPA. Both areas are of great public interest.

The recent agreement between EPA and the City, State, and Port of Portland

allows forward motion on remedial design in the water at Willamette Cove. As public agencies committed to meaningful public involvement, the City, State, and Port collaborated with community groups to strengthen equity considerations in the selection process for the remedy design contractor. The agencies are also working with community to establish an advisory committee specific to this cleanup area to ensure the voices of communities affected by the Superfund are heard in the Willamette Cove cleanup design process.

# River Mile 11 East

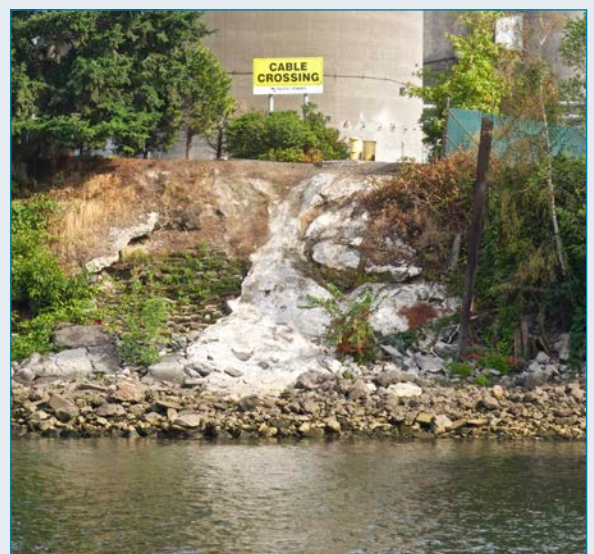
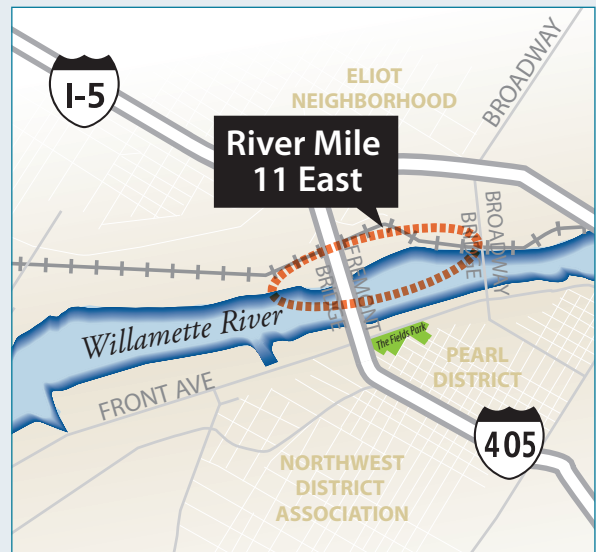


NAIM HASAN PHOTOGRAPHY

## More Progress at River Mile 11 East

Already in the remedy design phase, the City and its partners hit a significant milestone for the project area known as River Mile 11 East (RM11E). The RM11E group consists of the City of Portland, Cargill Inc., CBS Corporation, DIL Trust, Glacier Northwest, and PacifiCorp. The team successfully completed the basis of design for cleanup at this site. This process included setting the standards and design criteria that ensure the remedy is consistent with EPA's cleanup plan and will protect human health and the environment.

This site is one of the more complex remedial design areas in the Portland Harbor Superfund due to active marine-dependent businesses along the shoreline and engineering challenges like over steepened banks and buried utility cables. Completion of the basis of design means that the RM11E group can dive even deeper into important engineering, logistics, and scheduling questions.



# Community Engagement & Communications

## City Officially Launched Portland Harbor Community Involvement Program

In 2019, the City launched its community involvement program. The City worked with community members affected by the Portland Harbor Superfund cleanup to identify priorities and program goals. Communities engaged included residents who live near the Portland Harbor Superfund site or have historical or current connections to the area, such as tribal members; urban Native peoples; communities of color; immigrants; refugees; people who are houseless; people who are low-income; and people who eat resident fish caught in the lower Willamette River.

### Community priorities include:

1

Ensuring meaningful involvement of Superfund-affected communities in the cleanup process.

2

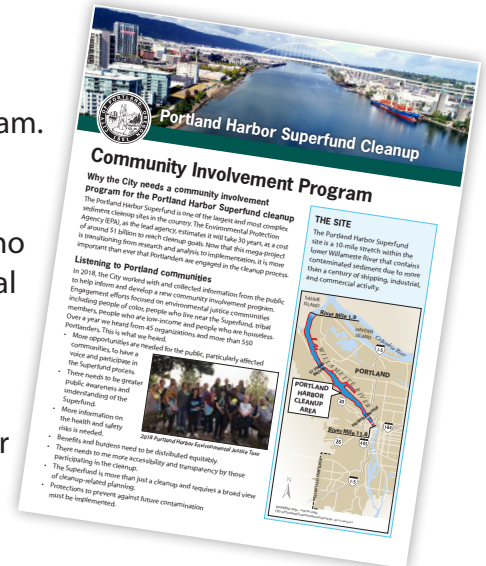
Improving Portlanders' understanding of the Superfund cleanup process.

3

Increasing transparency, ongoing communication, and collaboration among public entities and Superfund-affected communities.

4

Expanding the public's access to Portland Harbor Superfund-related information.



The City took significant steps in 2019 to address each of these priorities, including the efforts to make sitewide information accessibility a reality through partnering with the State, and the agreement for City, State, and Port performance on Willamette Cove remedy design. Portland Harbor program staff directly engaged and educated nearly 800 Portlanders through workshops, presentations, and community events in 2019. If you are interested in learning more or getting involved in the City's program, please contact [jessica.terlikowski@portlandoregon.gov](mailto:jessica.terlikowski@portlandoregon.gov).

## City Authorized \$300,000 to Support Public Involvement and Launched Community Grants

As part of our efforts to advance shared community-identified priorities, the City authorized \$300,000 over four years to support community involvement in the remedy design phase of the cleanup. A large portion of this support is dedicated to community grants that will start in 2020.

This fall the City invited community groups and organizations to apply for grants and help facilitate the first steps of remedy design. Specifically, grantees will partner with the City in 2020 to involve community members in developing recommendations to the EPA on how to make Superfund site information transparent and accessible; and to co-develop a structure and process that ensures communities affected by the Portland Harbor Superfund are heard in the design of the Willamette Cove in-water cleanup. The City is proud to share that the inaugural cohort of grantees includes Black Educational Achievement Movement, Blueprint Foundation, Portland Audubon, Portland Harbor Community Advisory Group, and Portland Harbor Community Coalition.

## Foundation Laid to Increase Accessibility and Transparency of Portland Harbor Information

The City and Oregon Department of State Lands signed an agreement with EPA in December to create plans for information management and institutional controls for the entire Portland Harbor Superfund site. EPA approves the policies and processes (known as “institutional controls”) that provide another layer of protection against contamination for people, wildlife, and the environment during the cleanup and into the future. Examples of institutional controls include fish advisories as well as restrictions of river or land use.

Recognizing the importance of stakeholder input for the project’s success, the City and State are actively engaging communities, agencies, tribes, businesses, and others to understand their information and data needs. The result of this effort will be stakeholder-informed recommendations to EPA for plans to coordinate institutional controls; manage harbor-wide data and information; and present information in an accessible way to the public. If you are interested in providing input on this project, please contact **Jessica Terlikowski** at [jessica.terlikowski@portlandoregon.gov](mailto:jessica.terlikowski@portlandoregon.gov).

# Fish Advisory Education

## Multnomah County Engaged Communities in Fish Advisory Education Program Development

With combined funding from the City, State, and Port, Multnomah County Health Department (MCHD) led 11 community workshops in 2019 where participants created language about the Lower Willamette fish advisory that was grounded in science and participants' community and cultural expertise. Through these workshops, community members shaped the form and content of what is communicated about the Oregon Health Authority's fish advisory and how best to reach community members.

In the workshops, MCHD Environmental Health staff explained the advisory to make sure it was fully understood. Participants were then asked to apply their cultural traditions, community knowledge and strengths in thinking about ways to communicate effectively with their communities. Workshops were focused on communities most likely eating fish from the river and included: East European, Latinx, Vietnamese, Somali, Native American, Pacific Islander, and others.

## Stay Connected!

With new paths forged in several areas of Portland Harbor, we will share how each of those areas of work are progressing as we hit relevant milestones. Keep an eye on the City's Portland Harbor website for project developments.

Contact the Portland Harbor team anytime with questions by emailing [jessica.terlikowski@portlandoregon.gov](mailto:jessica.terlikowski@portlandoregon.gov).











The City of Portland is committed to providing meaningful access. To request translation, interpretation, modifications, accommodations, or other auxiliary aids, please call 503-823-7740 or Oregon Relay Service 711.

Traducción e Interpretación | Biên Dịch và Thông Dịch | अनुवादन तथा व्याख्या | 口笔译服务 | Устный и письменный перевод | Turjumaad iyo Fasiraad | Письмовий і усний переклад | Traducere și interpretariat | Chiaku me Awewen Kapas


 503-823-7740

Printed on recycled paper. OD 1970 JAN20

### Know Before You Go! Which fish should I eat?

Safe to Eat	Coho Salmon	
	Shad	
	Steelhead	
Limited	Crappie*	
	Crayfish*	
	Mussels*	
Don't Eat	Bass	
	Catfish (Brown Bullhead)	
	Carp	
	Clams*	

\* Monthly limits for crappie-2, crayfish-2, and mussels-7. There are Tribal rights to harvest mussels. Otherwise, harvesting of mussels and clams is not allowed.

  
For more information, contact:  
**Beth Appert** - Multnomah County Environmental Health Services  
[beth.appert@multco.us](mailto:beth.appert@multco.us) / 503-988-7851 / [www.multco.us/fish](http://www.multco.us/fish)  
**Oregon Health Authority Statewide Fish and Shellfish Advisories** - [www.healthoregon.org/fishadv](http://www.healthoregon.org/fishadv)

Multnomah  
County  
Health Department

For more information, contact:

**Beth Appert** - Multnomah County Environmental Health Services  
[beth.appert@multco.us](mailto:beth.appert@multco.us) / 503-988-7851 / [www.multco.us/fish](http://www.multco.us/fish)

**Oregon Health Authority Statewide Fish and Shellfish Advisories** - [www.healthoregon.org/fishadv](http://www.healthoregon.org/fishadv)