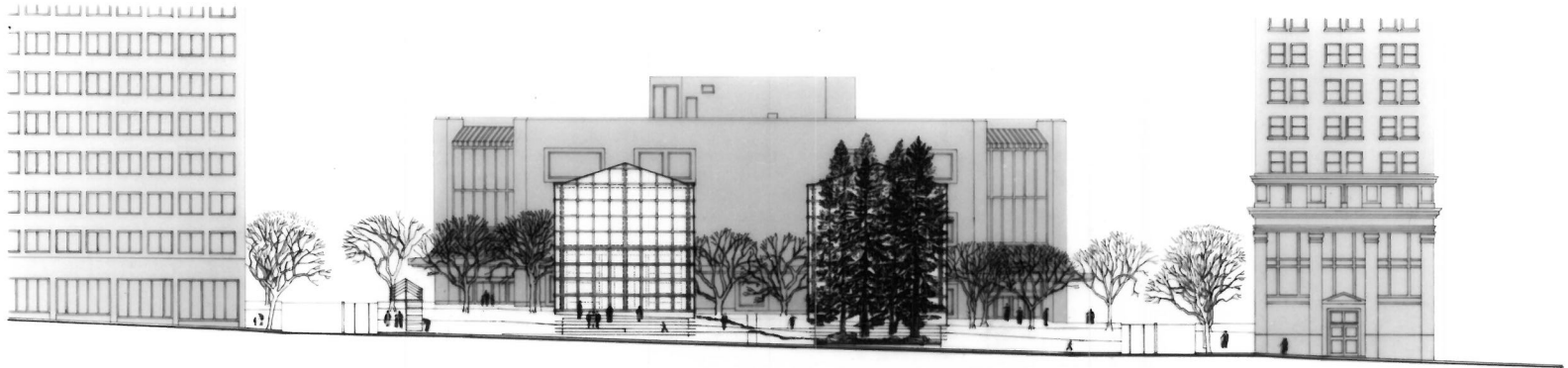


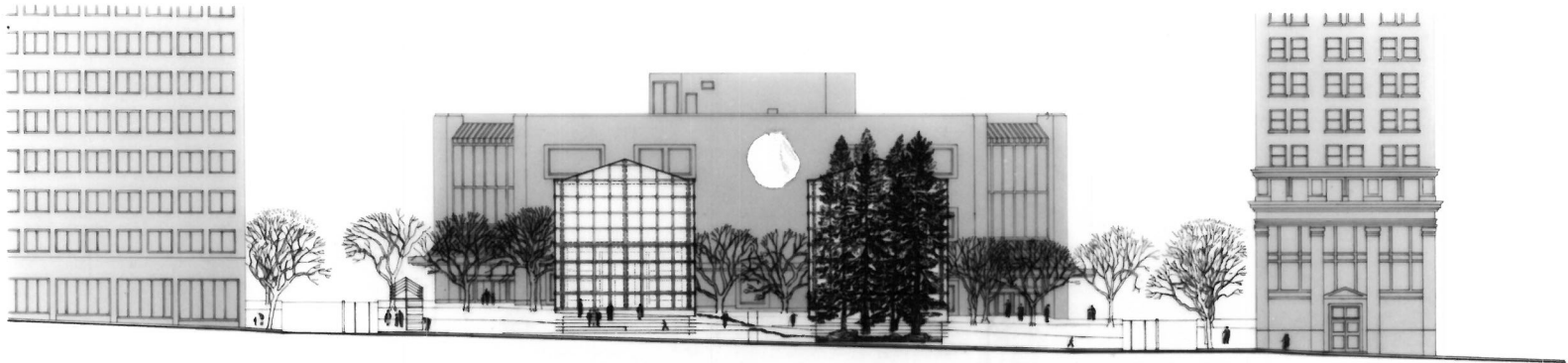


VIEW FROM SW SIXTH STREET



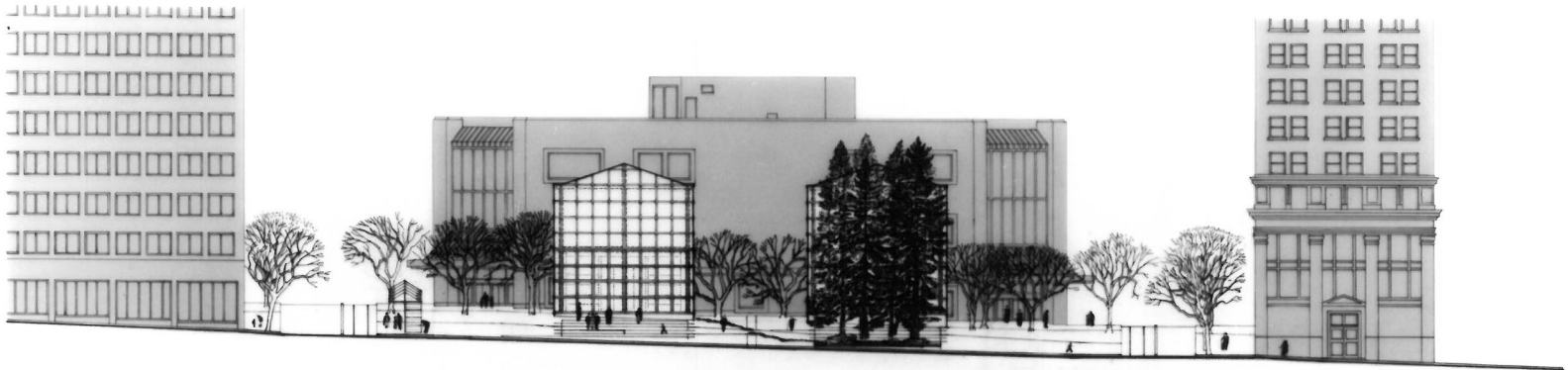
Pioneer Courthouse Square
City of Portland, Oregon

S.W. SIXTH AVENUE ELEVATION
YAMHILL STREET ELEVATION



Pioneer Courthouse Square
City of Portland, Oregon

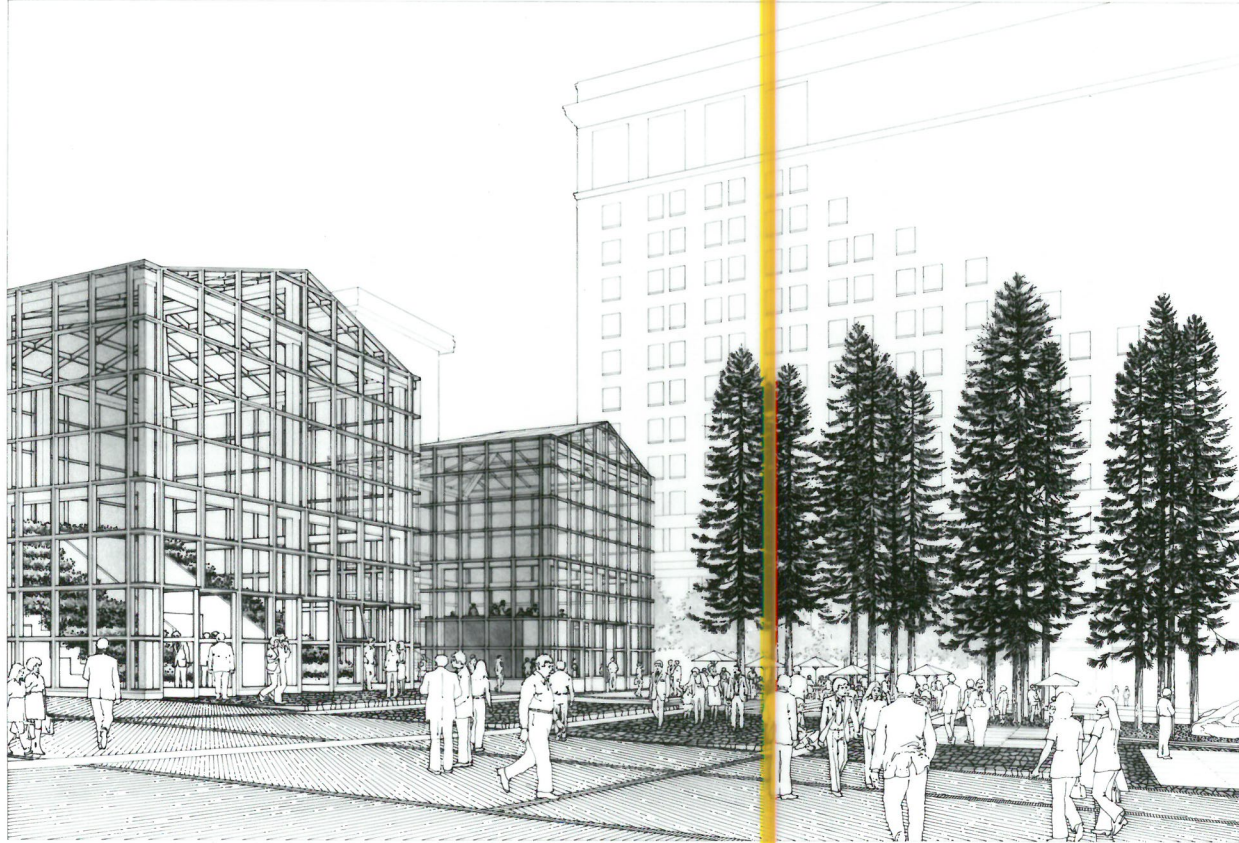
S.W. SIXTH AVENUE ELEVATION
YAMHILL STREET ELEVATION



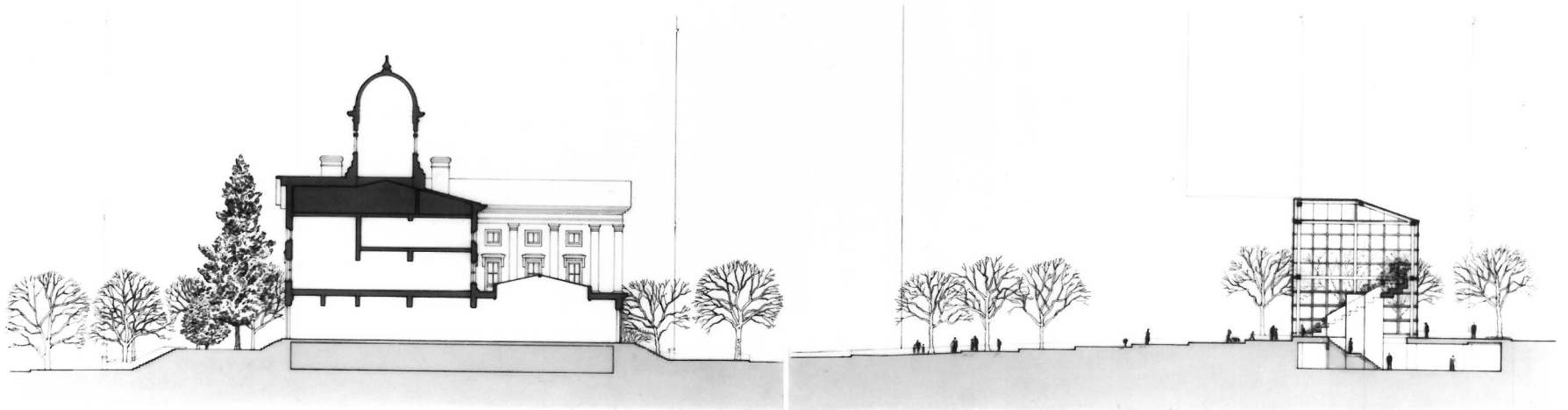
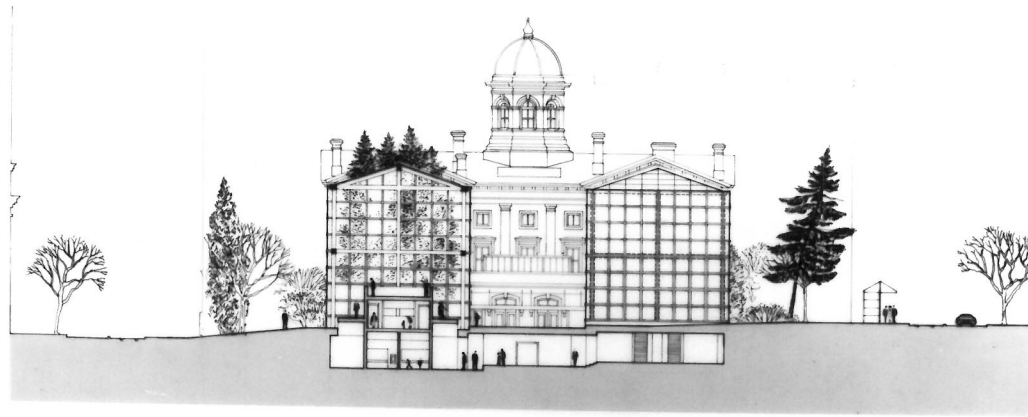
Pioneer Courthouse Square
City of Portland, Oregon

SW. SIXTH AVENUE ELEVATION
YAMHILL STREET ELEVATION

0 10 20 30 40 50

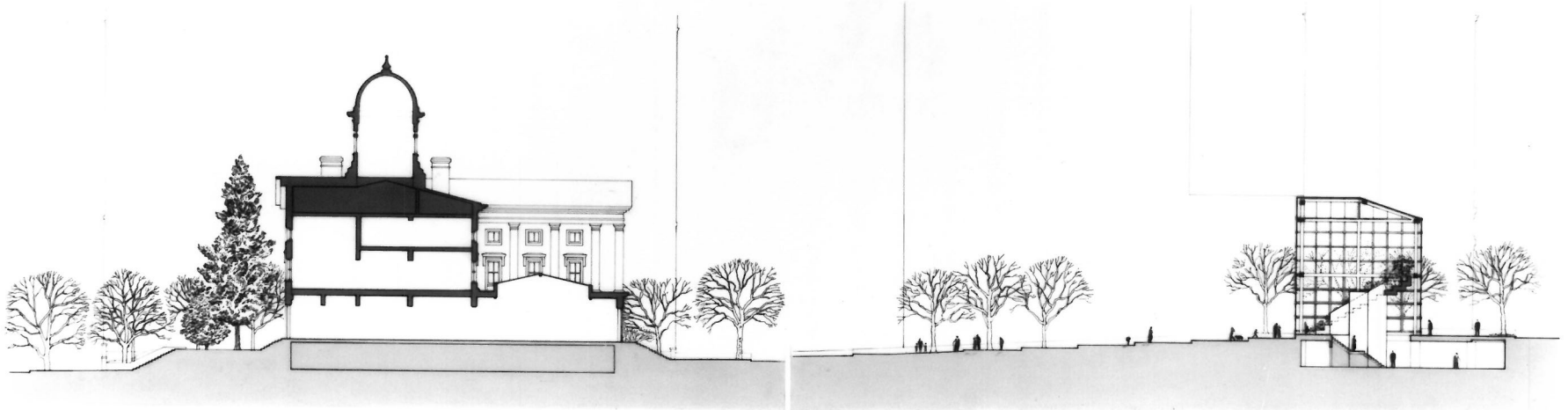
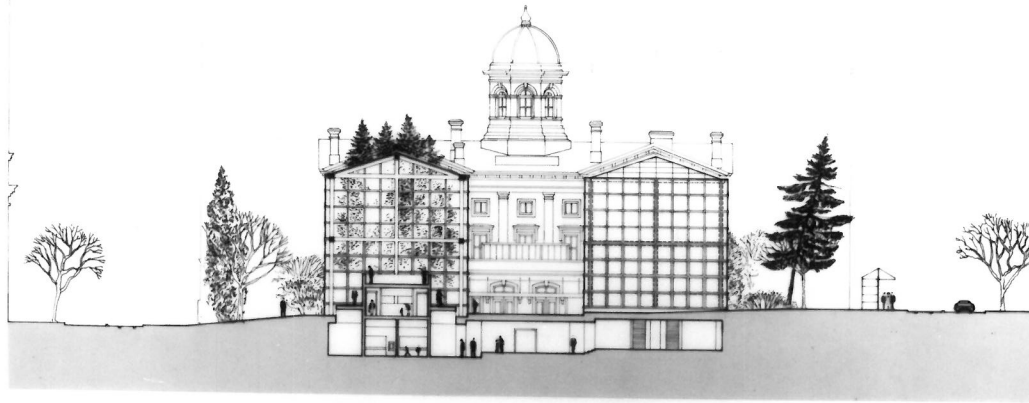


VIEW FROM YAM HILL STREET



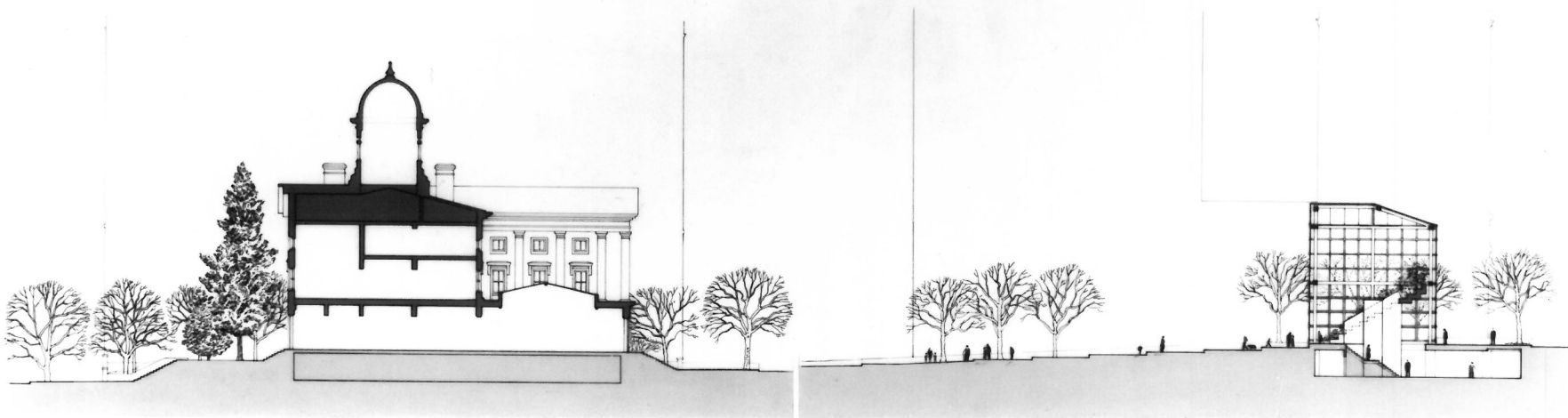
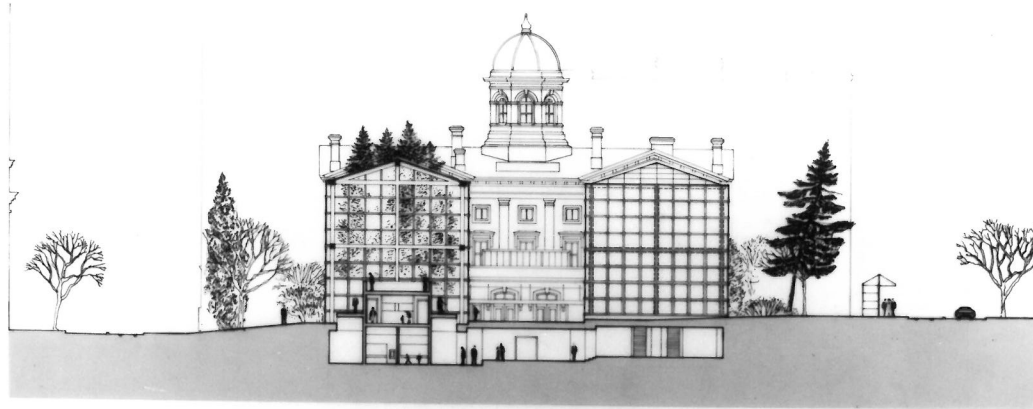
Pioneer Courthouse Square
City of Portland, Oregon

SECTION A
SECTION B



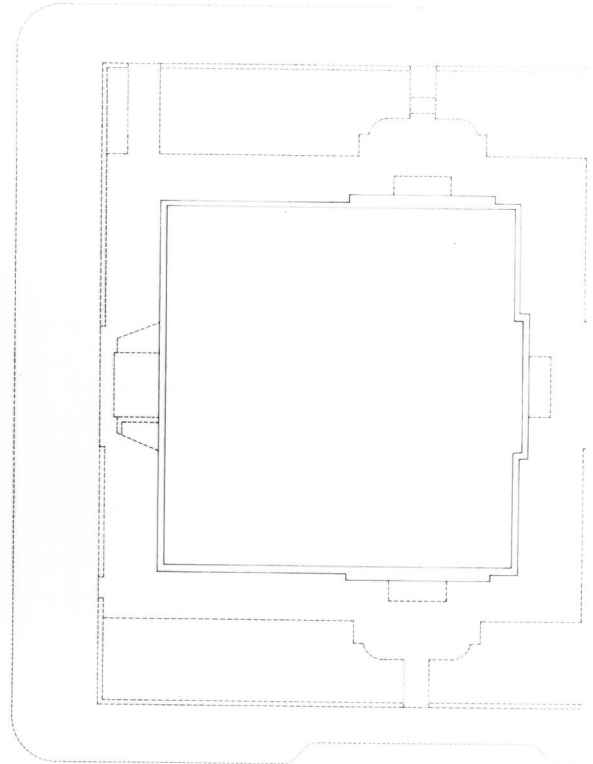
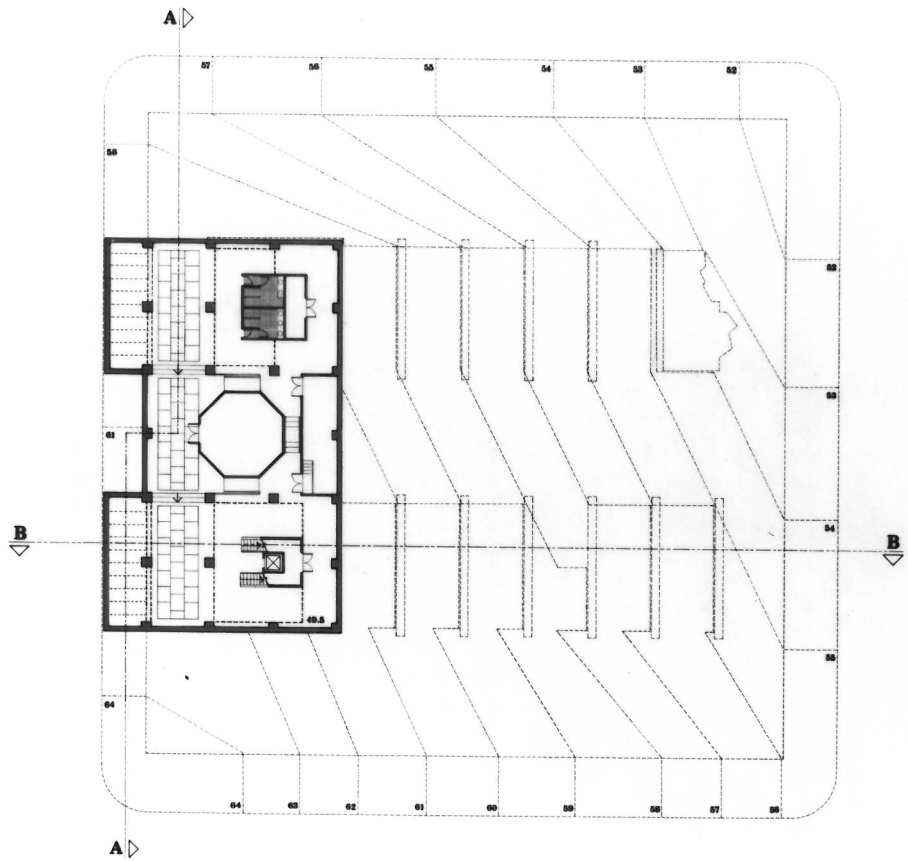
Pioneer Courthouse Square
City of Portland, Oregon

SECTION A
SECTION B



Pioneer Courthouse Square
City of Portland, Oregon

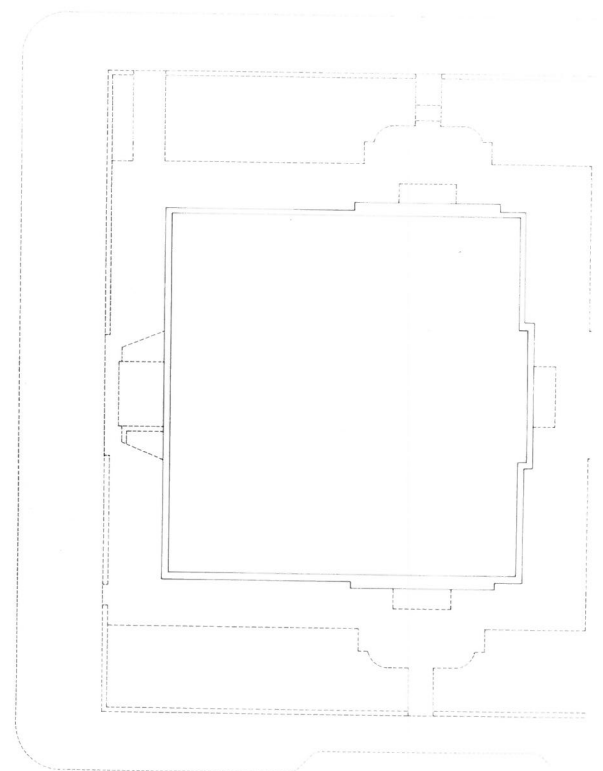
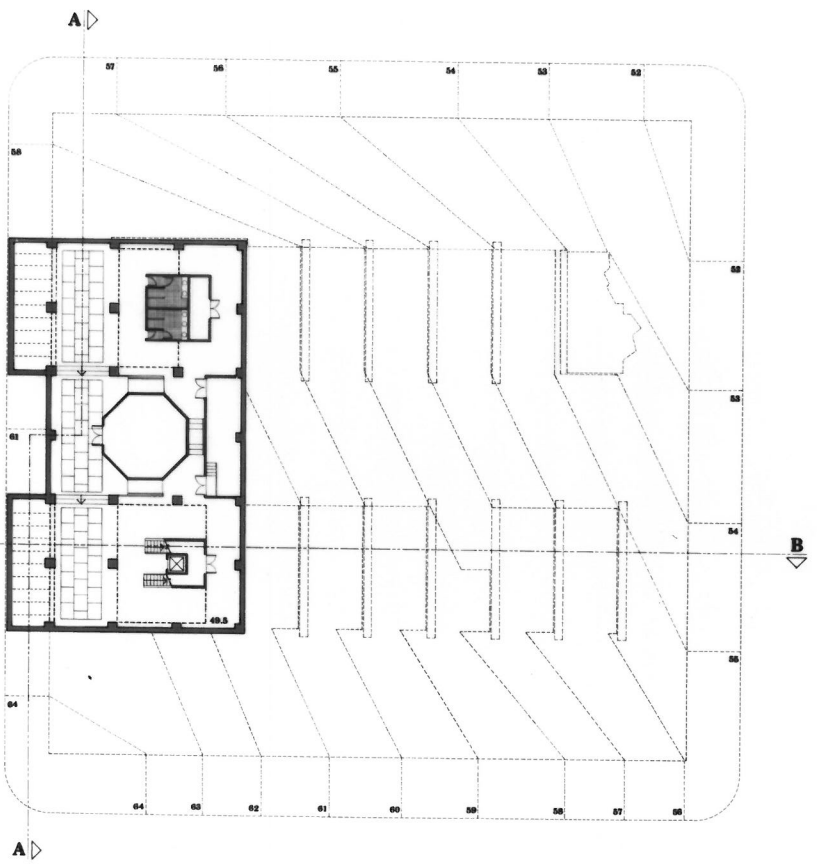
SECTION A
SECTION B



Pioneer Courthouse Square
City of Portland, Oregon

MUSEUM LEVEL PLAN

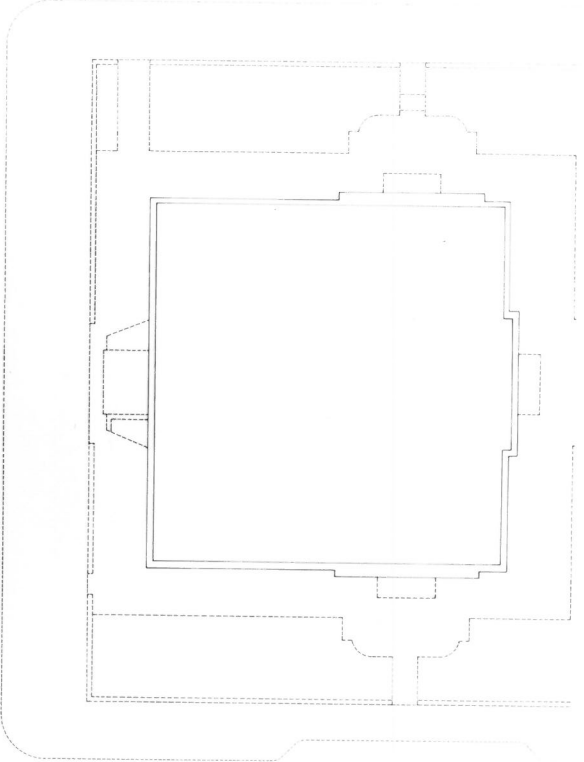
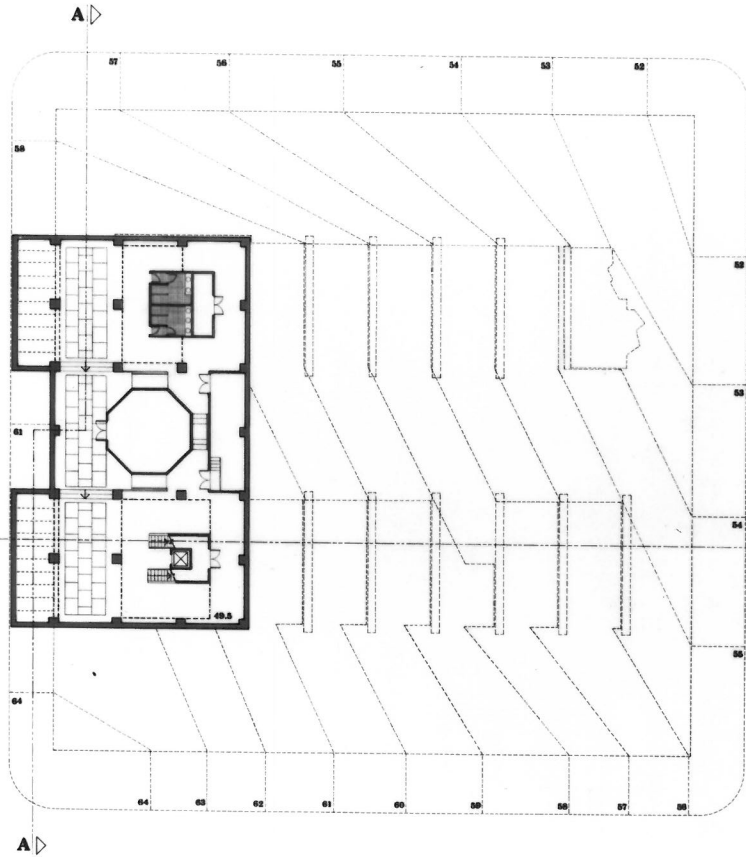




Pioneer Courthouse Square
 City of Portland, Oregon

MUSEUM LEVEL PLAN

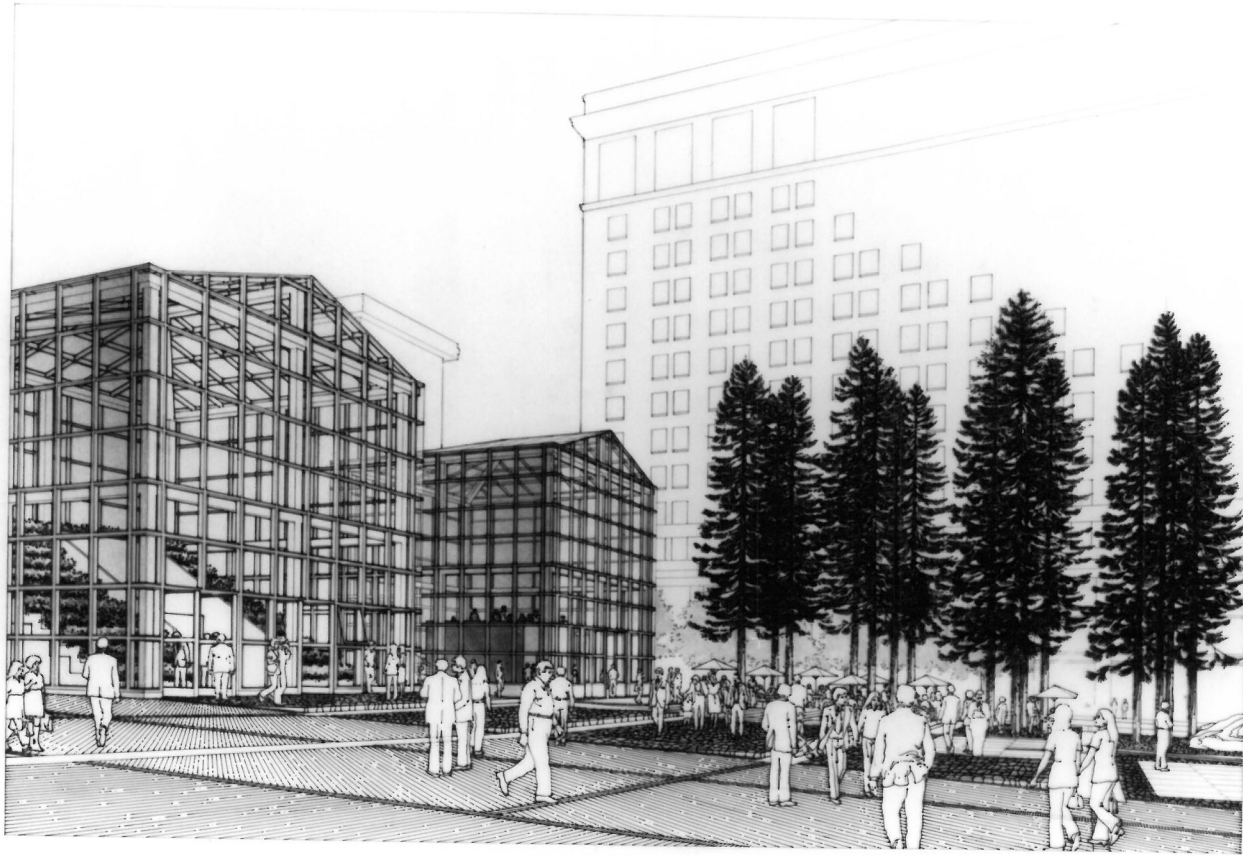




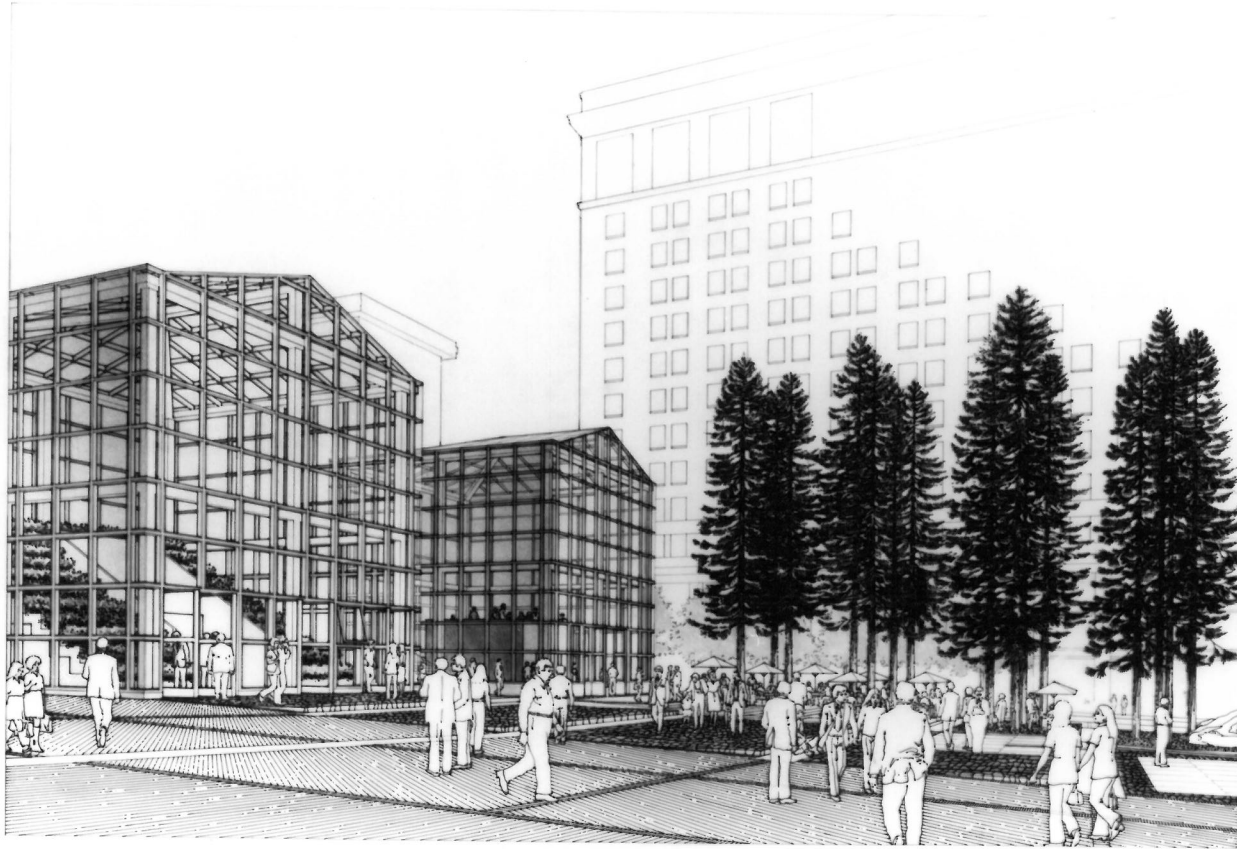
Pioneer Courthouse Square
 City of Portland, Oregon

MUSEUM LEVEL PLAN

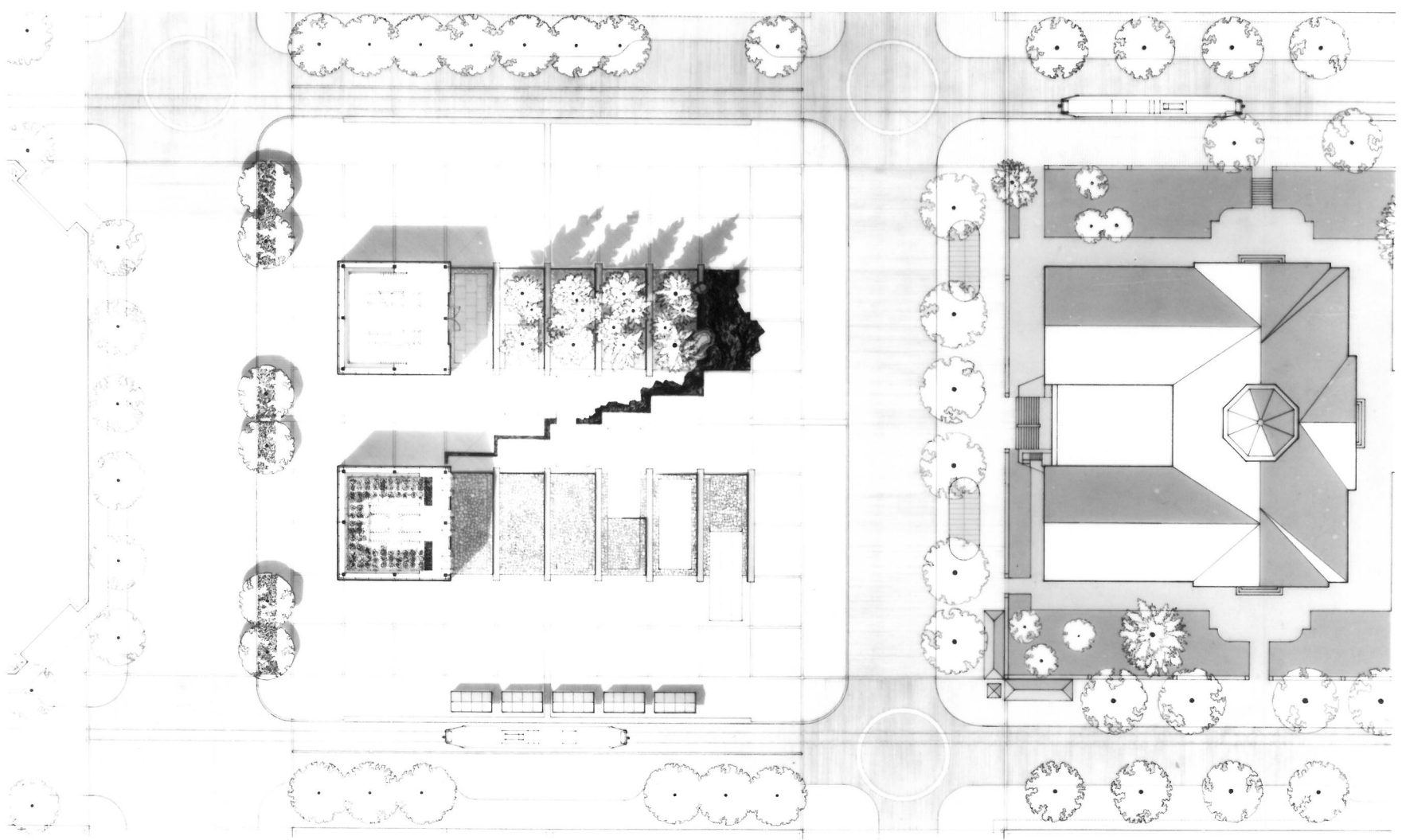




VIEW FROM YAM HILL STREET



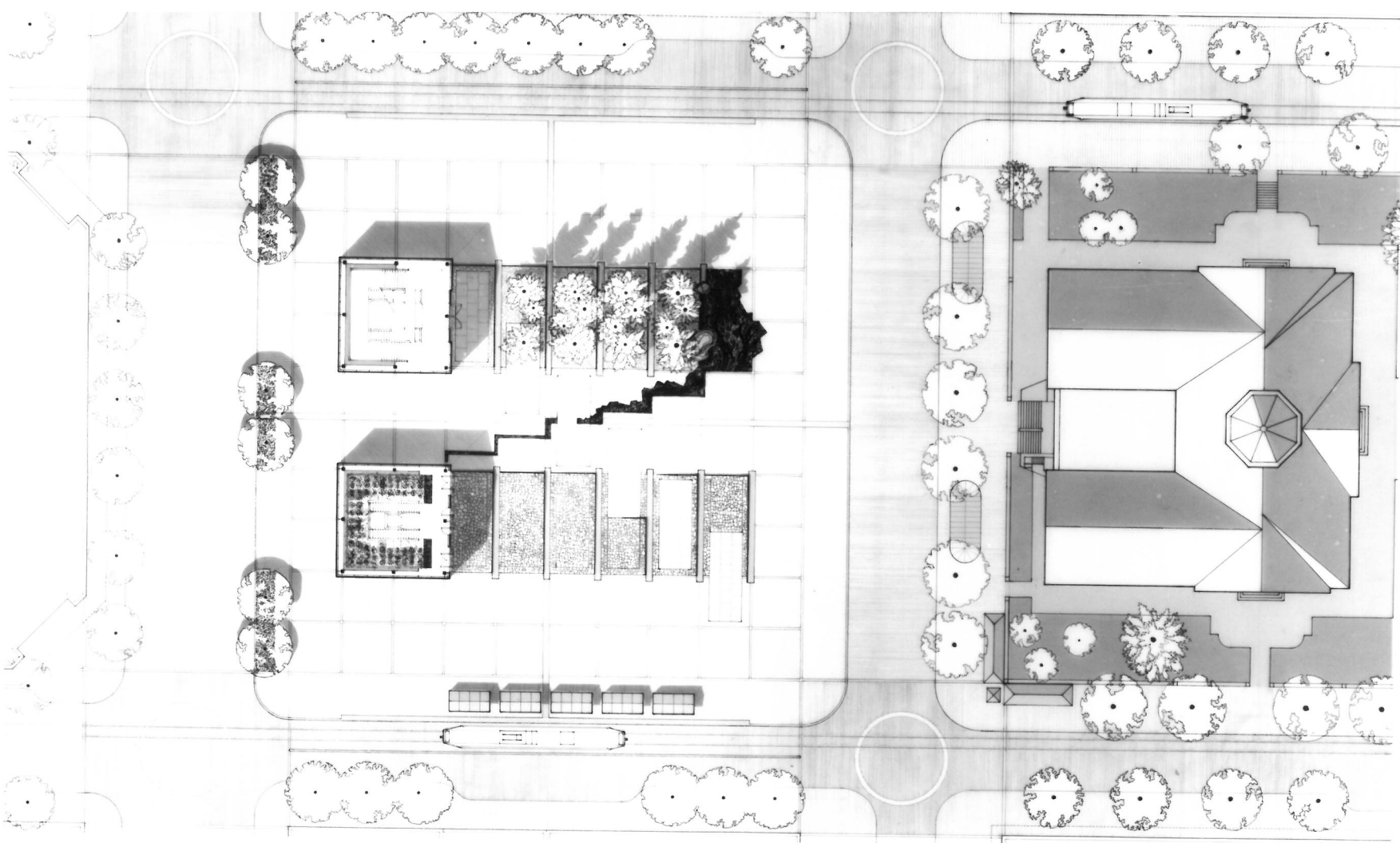
VIEW FROM YAM HILL STREET



Pioneer Courthouse Square
City of Portland, Oregon

PLAN

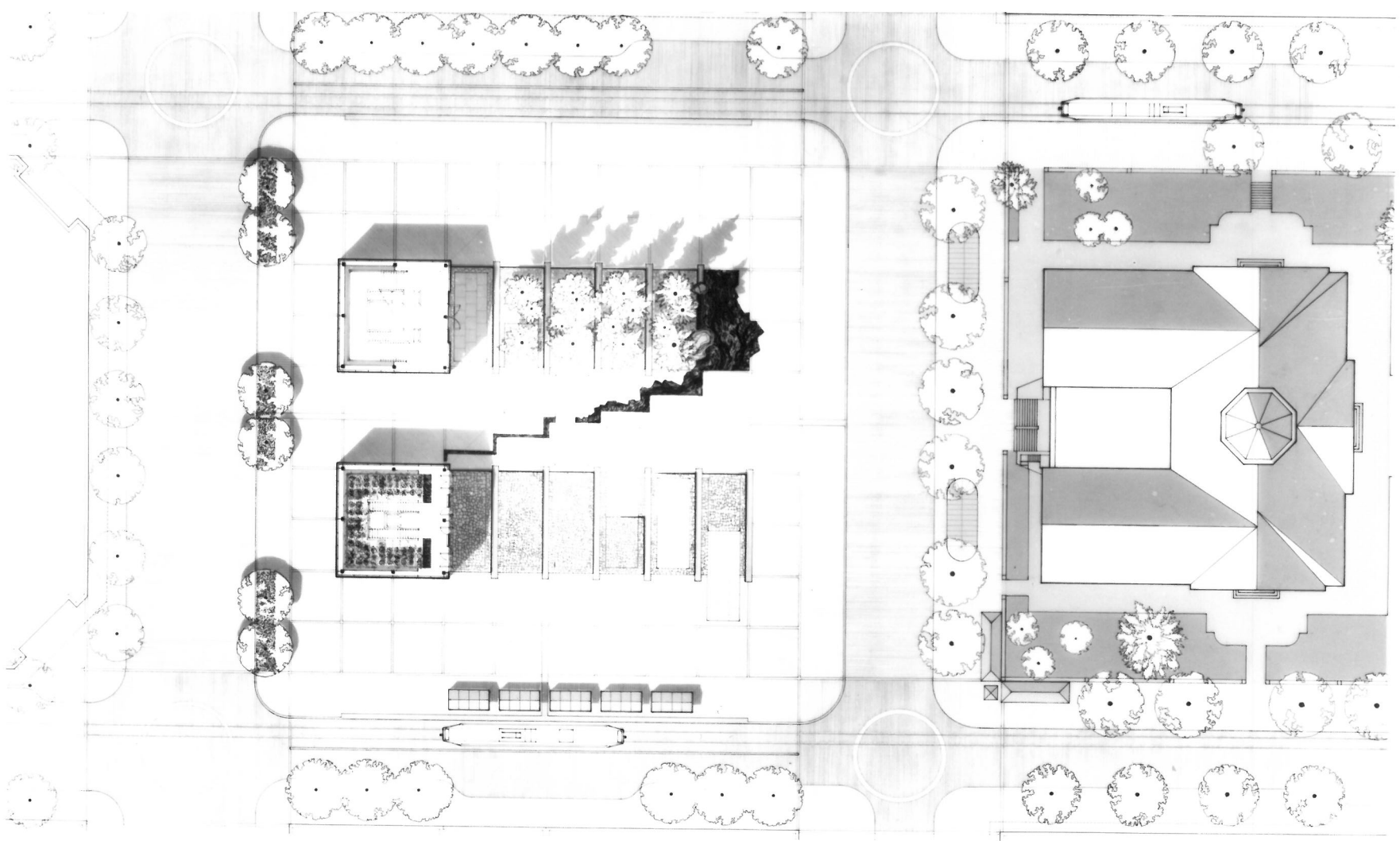




Pioneer Courthouse Square
City of Portland, Oregon

PLAN

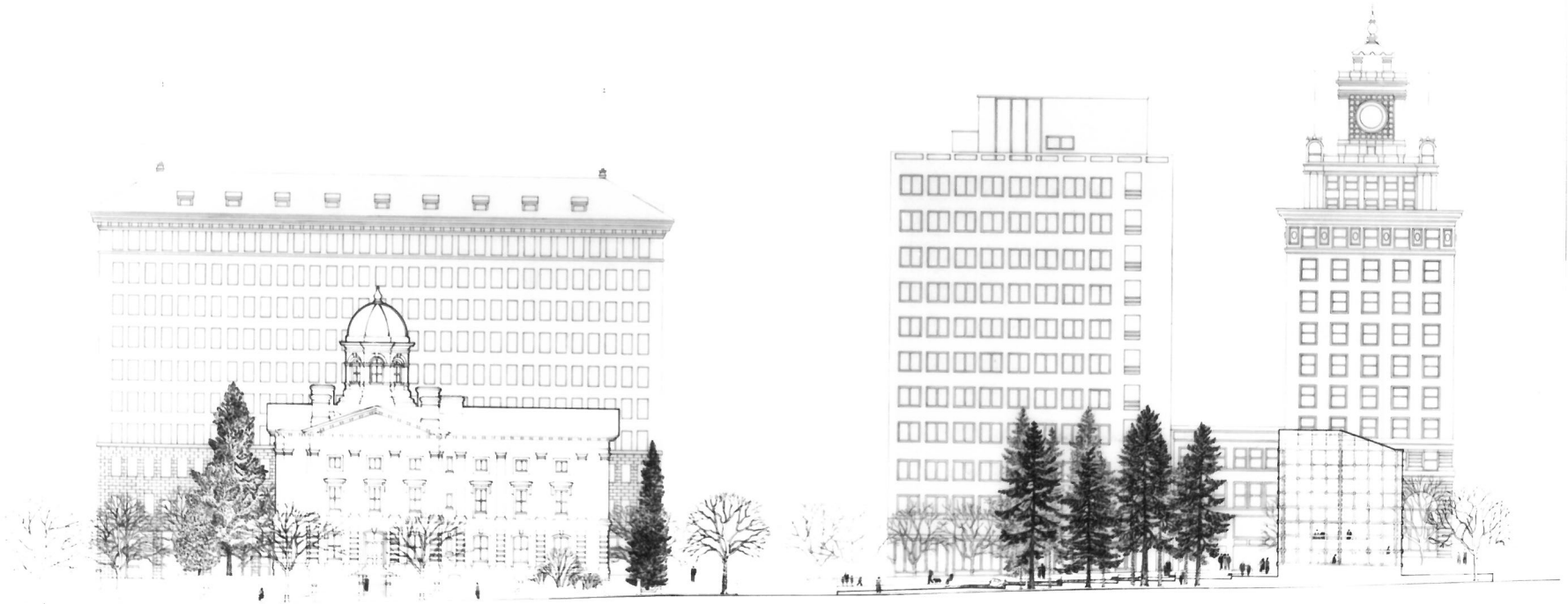




Pioneer Courthouse Square
City of Portland, Oregon

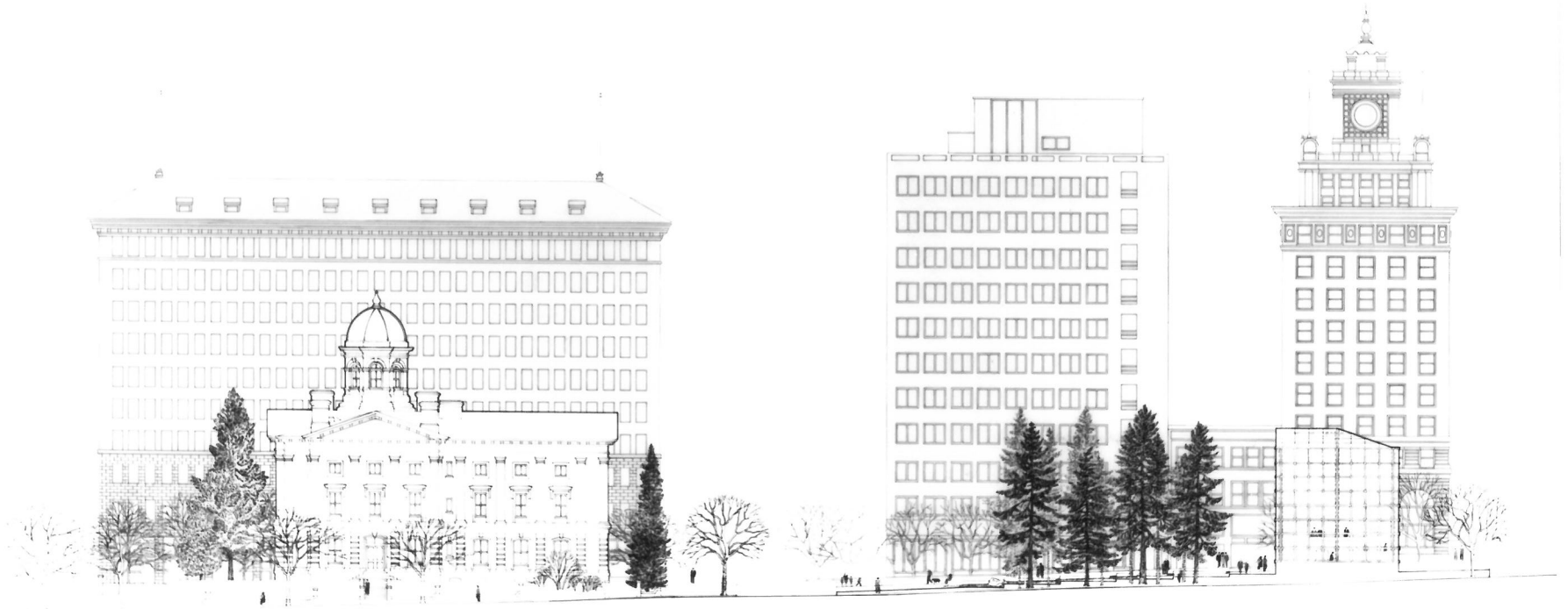
PLAN





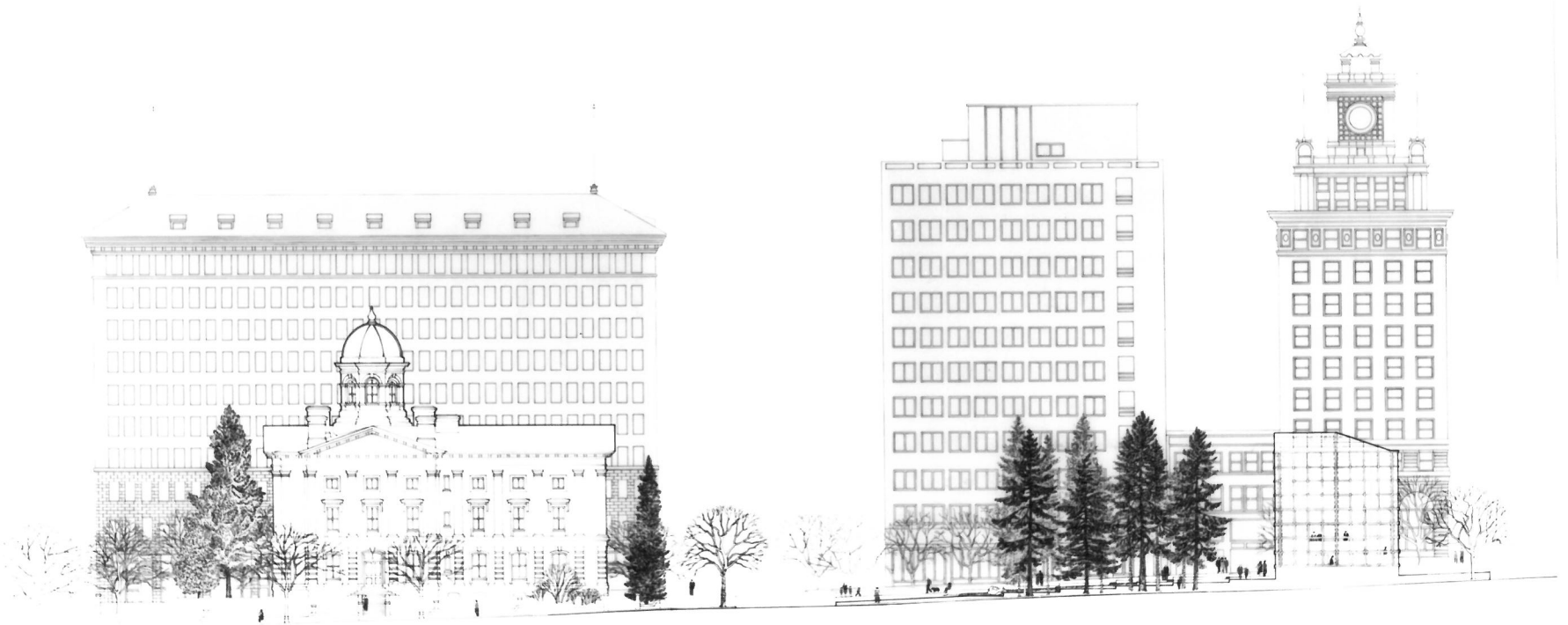
Pioneer Courthouse Square
City of Portland, Oregon

MORRISON STREET ELEVATION



Pioneer Courthouse Square
City of Portland, Oregon

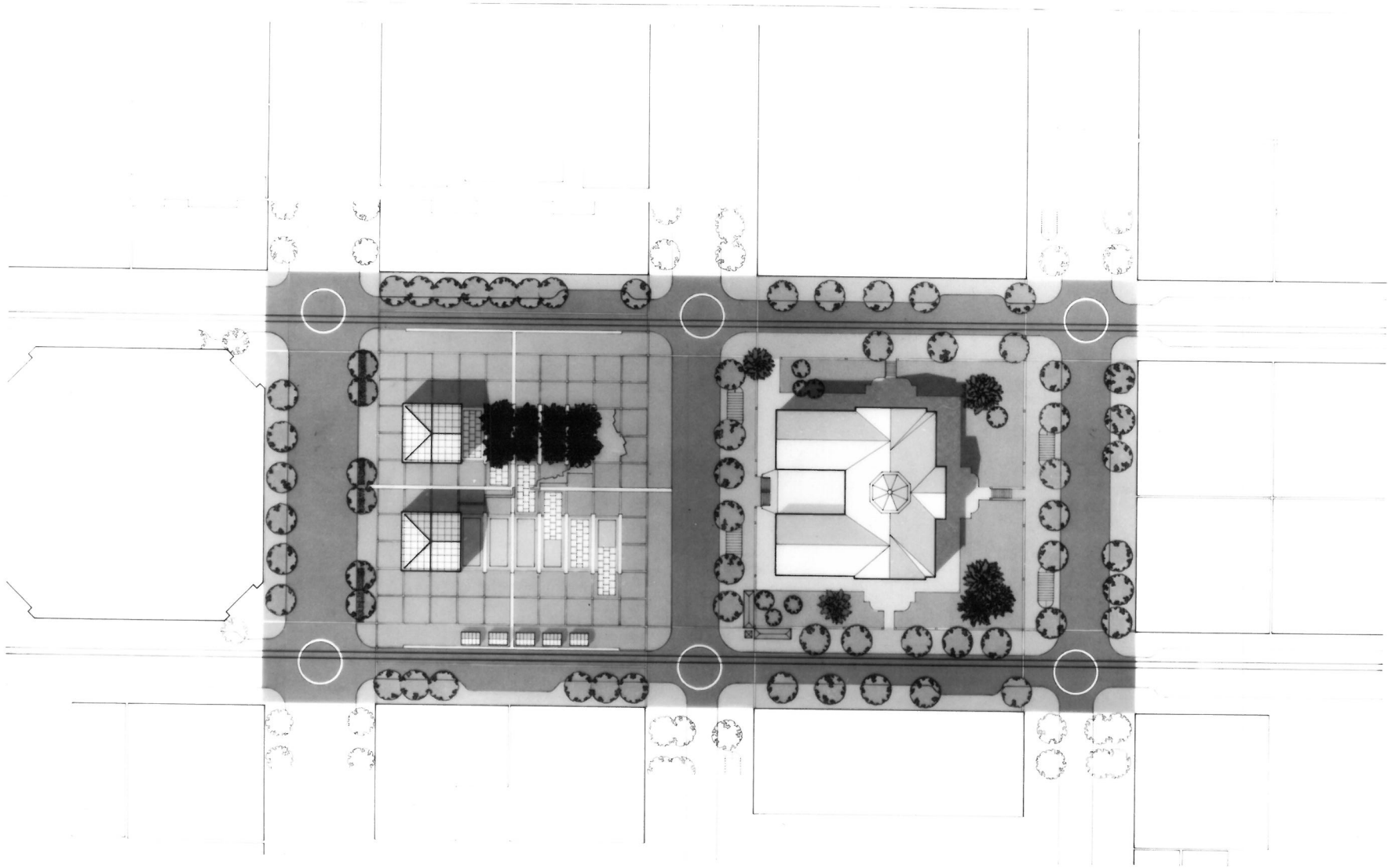
MORRISON STREET ELEVATION



Pioneer Courthouse Square
City of Portland, Oregon

MORRISON STREET ELEVATION

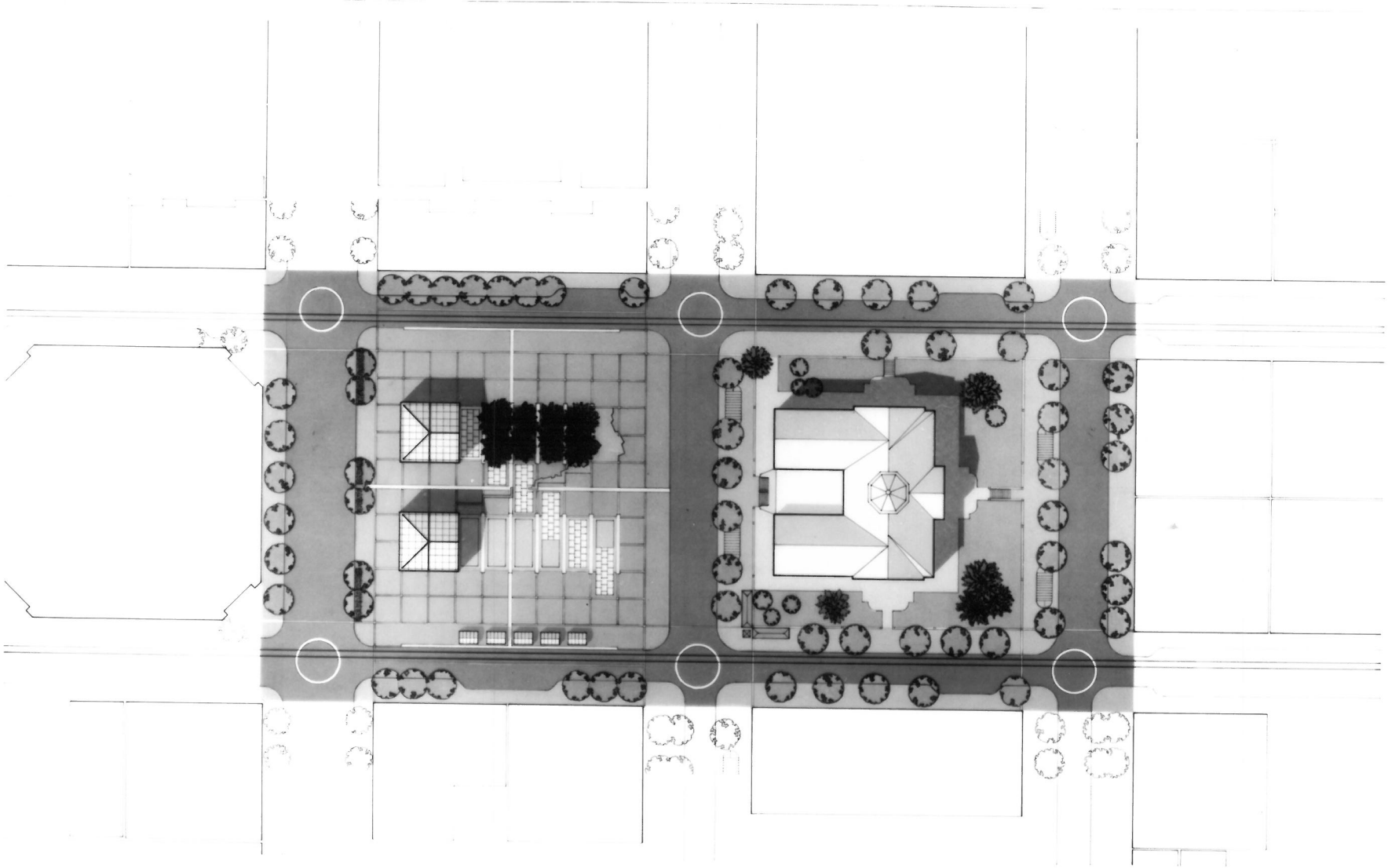
0 50'



Pioneer Courthouse Square
City of Portland, Oregon

SITE PLAN

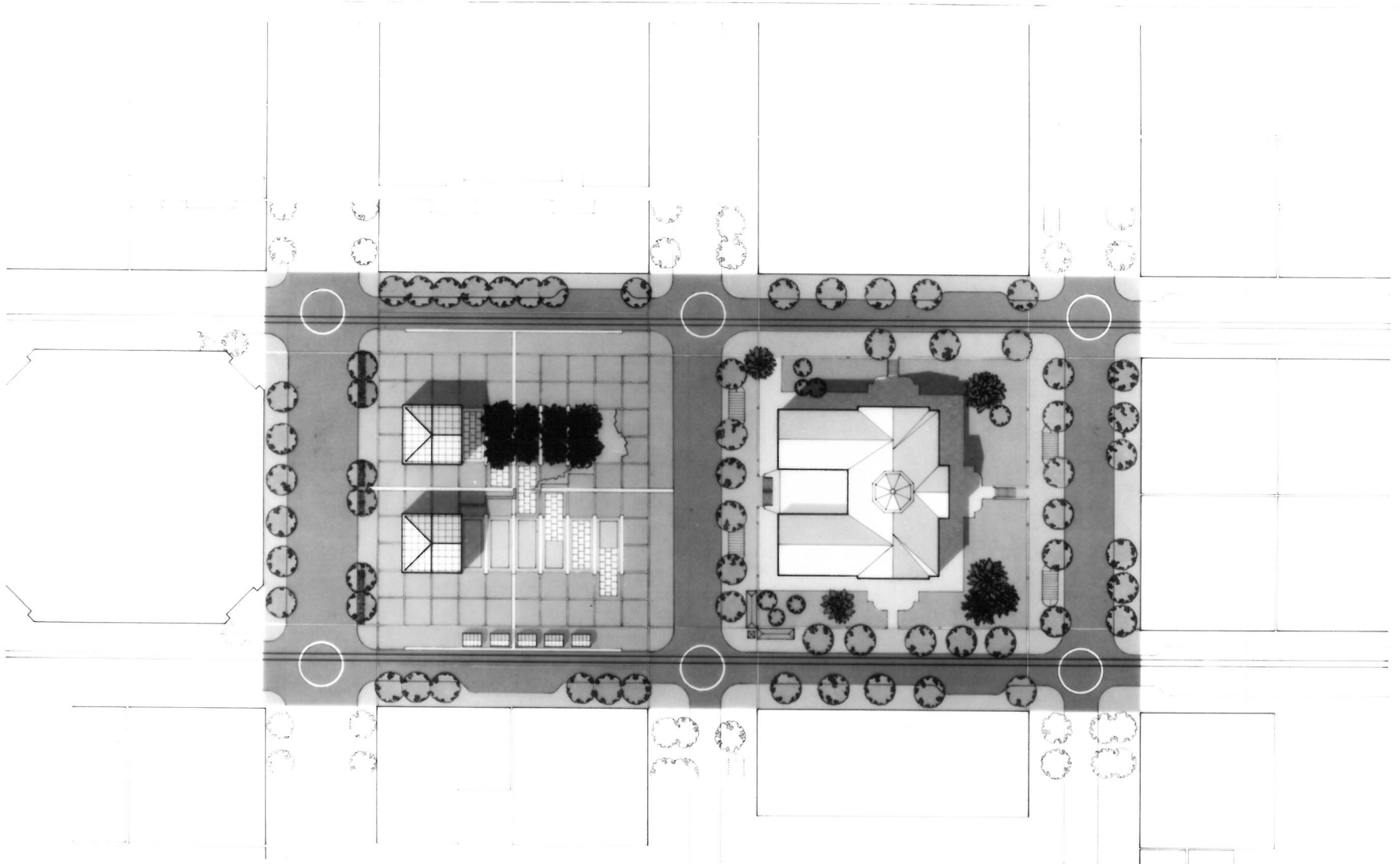




Pioneer Courthouse Square
City of Portland, Oregon

SITE PLAN





Pioneer Courthouse Square
City of Portland, Oregon

SITE PLAN





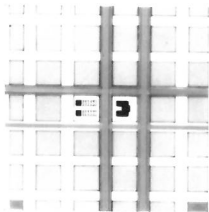
VIEW FROM SW SIXTH STREET



VIEW FROM SW SIXTH STREET



VIEW FROM SW SIXTH STREET



Location in Grid

I. Controlling Concept

Pioneer Courthouse Square will be the focus of cultural and urbane activity for downtown Portland. It will also be a symbolic place which comments on the City's special character, its setting and aspirations as well as on the *tradition of cities*—a statement about the possibilities of urban life and urban space today.

The design is intended as a response to four sets of factors:

- Portland's particular culture, climate, tradition, and character;
- the stated requirements of the Competition Program, including costs;
- the formal characteristics of the site within a highly structured and regular city grid system;
- and our ideas about urban spaces and historic places.

We believe the design is practical, responsive, and strong. It acknowledges history without nostalgia and accommodates function without disregarding symbolic need and the aura of the place.

It is at once a garden and an urban plaza.

At its core, it is a dialogue between nature and man—what existed and what was imposed. It suggests simple and complex relations between the natural and the manmade, between nature and man's art.

II. Elements of Design

1. Location in the Grid

Pioneer Courthouse Square is a major open space which stands at a unique intersection in the Portland grid. Its northeast corner is at the crossing of a proposed major east-west pedestrian light-rail street (Morrison) and one of a pair of existing north-south transit ways. The Square itself will then serve as a major interchange for the Portland Transit System.

2. The Double Square

The two blocks which contain the Courthouse and the new Square are brought together in the design to create a great "double square." The old Courthouse is left intact—the new Square responds to it—new space interlocks with old building.

This integration is achieved through the location of two pavilions on axis with, and opposite to, the two west-facing wings of the Courthouse, which both extend and counterpoint the older building. Together these three visually and geometrically linked objects define and are defined by the surrounding "room" of the two city blocks in which they are placed. A terraced garden between the new pavilions and the Courthouse further emphasizes, through landscaping, the spatial unity of the double square. A paved zone surrounding the terraced gardens is analogous to the landscaped berm surrounding the Courthouse but opposite in character. One is a soft, tranquil, green border; the other a hard, active, paved perimeter.

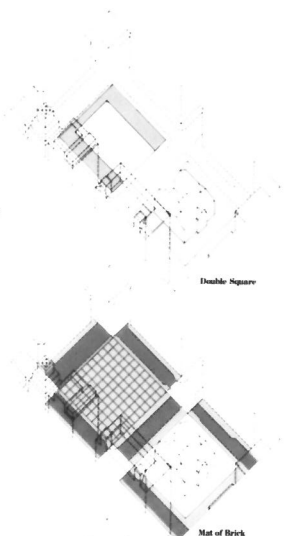
3. The New Square

To articulate the "natural" profile of the ground and the "imposed" patterns of use, the surface (ground plane) of the new Square follows the diagonal (southwest to northeast) *fall of the grade* within the orthogonal street grid. This is a forthright and preferable alternative to "synthetic" solutions such as building a podium or cutting a flat surface into the natural slope.

Following this grade creates a *natural flow of water* across the Square, a *diagonal path on flat grade* connecting the northwest and the southeast corners of the site, and a *clear articulation of the two major sets of organizing axes*—the orthogonal axis of the street and building grid and the diagonal axis of the land's natural contours. It also functionally connects the new ground plane to the existing street grades and sidewalks without slopes, berms, or stairways which impede pedestrian movement.

In order to accommodate its many and changing uses and to acknowledge its special character with respect to the Courthouse, the new Square has the following features:

- two pavilions, one a gigantic (conservatory) flower room, the other a terraced café;



Double Square

Mat of Brick

Natural Grade

Terraces

- a space for a *museum and orientation center* below the pavilions which utilizes the vaults under the sidewalk;

- an *elegant paved ground plane* of brick and stone, subdivided into a 20 x 20 foot grid, a microcosm of the larger 200 foot grid of the City. This patterned "floor" will extend across the existing streets to the face of the surrounding buildings to create the sense of unified space and to reduce the visual intrusion of the rights-of-way for light-rail, bus, and vehicles;

- an *inner terraced garden (a central landscaped core)* which offers a center of repose within the frame of greater activity that occurs at the perimeter of the Square. Stepped terraces with trees, flowers, formal and informal seating provide a natural amphitheater for concerts, plays, and performances. The southern terrace is an open place for sitting in the sun, for café tables, and for viewing performances. The northern terrace is a place of nature—a shaded grove of evergreens. Between and connecting the two is a watercourse and crossing it is a sequence of stone terraces connecting the northeast and southwest corners of the site in a level path.

- open paved areas, extended sidewalks on each side of the terraces to accommodate pedestrian movements and the loading and unloading of the light-rail transit vehicles, and for tents for the Rose Festival, Art Quake, and other activities;

- a series of *permanent shelters* for the transit system passengers;

- ancillary equipment* including the tents, awnings, a demountable performance "stage and shell," tables and seating to allow for flexible use of the Square and easy storage when not in use.

4. The Pavilions

Although the Square is designed to accommodate a wide variety of events, it has a "center," a permanent place of interest and character which gives life to the surrounding City, day and night, weekends as well as weekdays. This is provided by the two glass *Portland Pavilions*, which create a symbolic image of the City—expressing in their shape, function, placement, and materials the duality between man and nature which seems so strong in the Pacific Northwest.

The Pavilions become a "trace" of the old Courthouse, reflections of both the past and the present. During the day their glass skin reflects sky, Courthouse, and people. At night they glow with light from within, while the Courthouse and the evergreen trees are flood-lit from without. One pavilion is a café, the other a conservatory. Underneath both and connecting to the vaults below the Broadway sidewalk is a space for a museum for Historic Portland and an orientation center for Portland Today.

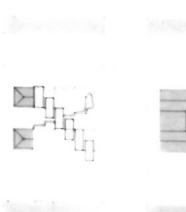
The Conservatory Pavilion is filled with a great bank of flowers—marigolds, petunias, geraniums, narcissus, tulips, roses, fuchsias, azaleas, carnations, rhododendrons, ferns—offering a dense, lush, scented, intimate environment—the City of Flowers "Garden Room." Here water trickles as in the nearby forests and then gathers force and moves out, from its source onto the plaza. It flows diagonally across the terrace in a torrent, icing the stone, and subsides in a great basin of pebbles at the foot of the tall, evergreen grove.

The Terrace Café Pavilion is occupied not by nature but by man. Here the passerby can sit, eat, and drink, taking in the activity and pageant of the passing City, in the midst of the urban world, yet in a sanctuary. In summer, tables and chairs will extend the café outside the enclosure onto the terraces.

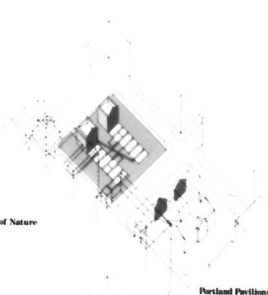
III. A Summary of Design Intentions

The elements of the design are responses to the functional and symbolic requirements of the Competition Program. Their underlying intentions can be summarized as follows:

- to emphasize the *unity of the Square and the Courthouse*;
- to establish a *separate character for the new Square* within the larger unity, in which aesthetic concerns reinforce the practical requirements;
- to maintain the *natural slope of the land*; and
- to create a *unique, yet compatible, image and symbol for Portland*, which can be a permanent focus of the City's life.



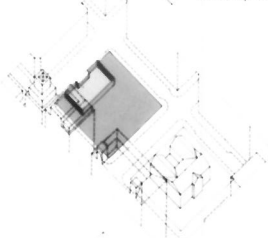
Path of Man and Path of Nature



Portland Pavilions



Conservatory and Terrace Café



Museum Space

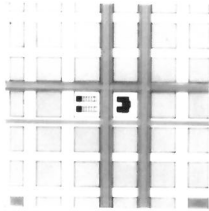


Terrace, Bus Shelters and Performance Shell

Pioneer Courthouse Square

City of Portland, Oregon

TEXT AND DIAGRAMS



Location in Grid

I. Controlling Concept

Pioneer Courthouse Square will be the focus of cultural and urbane activity for downtown Portland. It will also be a symbolic place which comments on the City's special character, its setting and aspirations as well as on the *tradition of cities*—a statement about the possibilities of urban life and urban space today.

The design is intended as a response to four sets of factors:

- Portland's particular culture, climate, tradition, and character;
- the stated requirements of the Competition Program, including costs;
- the formal characteristics of the site within a highly structured and regular city grid system;
- and our ideas about urban spaces and historic places.

We believe the design is practical, responsive, and strong. It acknowledges history without nostalgia and accommodates function without disregarding symbolic need and the aura of the place.

It is at once a garden and an urban plaza.

At its core, it is a dialogue between nature and man—what existed and what was imposed. It suggests simple and complex relations between the natural and the manmade, between nature and man's art.

II. Elements of Design

1. Location in the Grid

Pioneer Courthouse Square is a major open space which stands at a unique intersection in the Portland grid. Its northeast corner is at the crossing of a proposed major east-west pedestrian light-rail street (Morrison) and one of a pair of existing north-south transit ways. The Square itself will then serve as a major interchange for the Portland Transit System.

2. The Double Square

The two blocks which contain the Courthouse and the new Square are brought together in the design to create a great "double square." The old Courthouse is left intact—the new Square responds to it—new spaces interlock with old building.

This integration is achieved through the location of two pavilions on axis with, and opposite to, the two west-facing wings of the Courthouse, which both extend and counterpoint the older building. Together these three visually and geometrically linked objects define and are defined by the surrounding "room" of the two city blocks in which they are placed. A terraced garden between the new pavilions and the Courthouse further emphasizes, through landscaping, the spatial unity of the double square. A *priced zone surrounding the terraced gardens is analogous to the landscaped lawn* surrounding the Courthouse but opposite in character. One is a soft, tranquil, green lawn; the other a hard, active, paved perimeter.

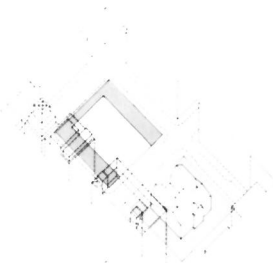
3. The New Square

To articulate the "natural" profile of the ground and the "imposed" patterns of use, the surface (ground plane) of the new Square follows the *diagonal* (southwest to northeast) *fall of the grade* within the orthogonal street grid. This is a forthright and preferable alternative to "synthetic" solutions such as building a podium or cutting a flat surface into the natural slope.

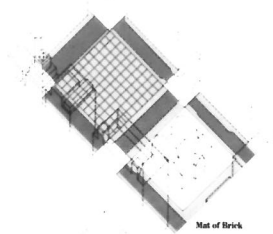
Following this grade creates a *natural flow of water across the Square, a diagonal path on that grade* connecting the northwest and the southeast corners of the site, and *active orientations of the lawn and sets of organizing axes*—the orthogonal axis of the street and building grid and the diagonal axis of the lawn's natural contours. It also functionally connects the new ground plane to the existing street grades and sidewalks without slopes, berms, or stairways which impede pedestrian movement.

In order to accommodate its many and changing uses and to acknowledge its special character with respect to the Courthouse, the new Square has the following features:

- two pavilions, one a gigantic (conservatory) flower room, the other a terraced cafe;



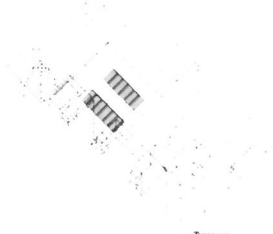
Double Square



Mat of Brick



Natural Grade



Terraces

- a space for a museum and orientation center below the pavilions which utilizes the vaults under the sidewalk;
- an elegant paved ground plane of brick and stone, subdivided into a 20 x 20 foot grid, a microcosm of the larger 200 foot grid of the City. This patterned "floor" will extend across the existing streets to the face of the surrounding buildings to create the sense of unified space and to reduce the visual intrusion of the rights-of-way for light-rail, bus, and vehicles;
- an inner terraced garden (a central landscaped cave) which offers a center of repose within the frame of greater activity that occurs at the perimeter of the Square. Stepped terraces with trees, flowers, formal and informal seating provide a natural amphitheater for concerts, plays, and performances. The southern terrace is an open place for sitting in the sun, for café tables, and for viewing performances. The northern terrace is a place of nature—shaded grove of evergreens. Between and connecting the two is a watercourse and crossing it is a sequence of stone terraces connecting the northeast and southwest corners of the site in a level path
- open paved areas, extended sidewalks on each side of the terraces to accommodate pedestrian movements and the loading and unloading of the light-rail transit vehicles, and for tests for the Rose Festival, Art Quake, and other activities;
- a series of permanent shelters on the southern perimeter for the transit system passengers;
- auxiliary equipment including the tents, awnings, a demountable performance "stage and shell," tables and seating to allow for flexible use of the Square and easy storage when not in use.

4. The Pavilions

Although the Square is designed to accommodate a wide variety of events, it has a "center," a permanent place of interest and character which gives life to the surrounding City: day and night, weekends as well as weekdays. This is provided by the two glass *Portland Pavilions*, which create a symbolic image of the City—expressing in their shape, function, placement, and materials the duality between man and nature which seems so strong in the Pacific Northwest.

The Pavilions become a "trace" of the old Courthouse, reflections of both the past and the present. During the day their glass skin reflects sky, Courthouse, and people. At night they glow with light from within, while the Courthouse and the evergreen trees are flood-lit from without. One pavilion is a cafe, the other a conservatory. Underneath both and connecting to the vaults below the Broadway sidewalk is a space for a museum for Historic Portland and an orientation center for Portland Today.

The Conservatory Pavilion is filled with a great bank of flowers—marigolds, petunias, geraniums, narcissus, tulips, roses, fuchsias, azaleas, camellias, rhododendrons, ferns—offering a dense, lush, scented, intimate environment—the City of Flowers "Garden Room." Here water trickles as in the nearby forests and then gathers force and moves out from its source onto the plaza. It flows diagonally across the terrace in a torrent, incising the stone, and subsides in a great basin of pebbles at the foot of the tall, evergreen grove.

The Terrace Cafe Pavilion is occupied not by nature but by man. Here the passersby can sit, eat, and drink, taking in the activity and pageant of the passing City, in the midst of the urban world, yet in a sanctuary. In summer, tables and chairs will extend the cafe outside the enclosure onto the terraces.

III. A Summary of Design Intentions

The elements of the design are responses to the functional and symbolic requirements of the Competition Program. Their underlying intentions can be summarized as follows:

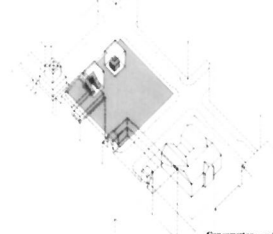
- to emphasize the unity of the Square and the Courthouse;
- to establish a separate character for the new Square within the larger unity, in which aesthetic concerns reinforce the practical requirements;
- to maintain the natural slope of the land; and
- to create a unique, yet compatible, image and symbol for Portland, which can be a permanent focus of the City's life.



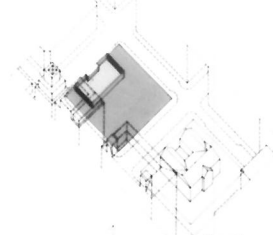
Path of Man and Path of Nature



Portland Pavilions



Conservatory and Terrace Cafe



Museum Space

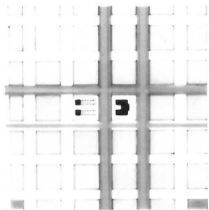


Tents, Bus Shelters and Performance Shell

Pioneer Courthouse Square

City of Portland, Oregon

TEXT AND DIAGRAMS



Location in Grid

I. Controlling Concept

Pioneer Courthouse Square will be the focus of cultured and urbane activity for downtown Portland. It will also be a symbolic place which comments on the City's special character, its setting and aspirations as well as on the *tradition of cities*—a statement about the possibilities of urban life and urban space today.

The design is intended as a response to four sets of factors:

- Portland's particular culture, climate, tradition, and character;
- the stated requirements of the Competition Program, including needs;
- the formal characteristics of the site within a highly structured and regular city grid system;
- and our ideas about urban spaces and historic places.

We believe the design is practical, responsive, and strong. It acknowledges history without nostalgia and accommodates function without disregarding symbolic need and the aura of the place.

It is at once a garden and an urban plaza.

At its core, it is a dialogue between nature and man—what existed and what was imposed. It suggests simple and complex relations between the natural and the manmade, between nature and man's art.

II. Elements of Design

1. Location in the Grid

Pioneer Courthouse Square is a major open space which stands at a unique intersection in the Portland grid. Its northeast corner is at the crossing of a proposed major east-west pedestrian light-rail street (Morrison) and one of a pair of existing north-south transit ways. The Square itself will then serve as a major interchange for the Portland Transit System.

2. The Double Square

The two blocks which contain the Courthouse and the new Square are brought together in the design to create a great "double square." The old Courthouse is left intact—the new Square responds to it—new space interlocks with old building.

This integration is achieved through the location of two pavilions on axis with, and opposite to, the two west-facing wings of the Courthouse, which both extend and counterpoint the older building. Together these three visually and geometrically linked objects define and are defined by the surrounding "room" of the two city blocks in which they are placed. A terraced garden between the new pavilions and the Courthouse further emphasizes, through landscaping, the spatial unity of the double square. A *parterre zone surrounding the terraced gardens is analogous to the landscaped berm* surrounding the Courthouse but opposite in character. One is a soft, tranquil, green border; the other a hard, active, paved perimeter.

3. The New Square

To articulate the "natural" profile of the ground and the "imposed" patterns of use, the surface (ground plane) of the new Square follows the *diagonal* (southwest to northeast) *fall of the grade* within the orthogonal street grid. This is a forthright and preferable alternative to "synthetic" solutions such as building a podium or cutting a flat surface into the natural slope.

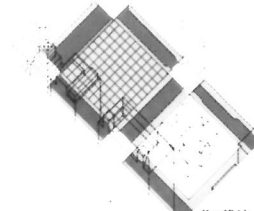
Following this grade creates a *natural flow of water across the Square, a diagonal path on the grade* connecting the northwest and the southeast corners of the site, and a *clear orientation of the two major sets of organizing axes*—the orthogonal axis of the street and building grid and the diagonal axis of the land's natural contours. It also functionally connects the new ground plane to the existing street grades and sidewalks without slopes, berms, or stairways which impede pedestrian movement.

In order to accommodate its many and changing uses and to acknowledge its special character with respect to the Courthouse, the new Square has the following features:

- two pavilions, one a gigantic (conservatory) flower room, the other a terraced café;



Double Square



Mat of Brick



Natural Grade



Terraces

- a space for a *museum and orientation center* below the pavilions which utilizes the vaults under the sidewalk;
- an *elegant paved ground plane* of brick and stone, subdivided into a 20 x 20 foot grid, a microcosm of the larger 200 foot grid of the City. This patterned "floor" will extend across the existing streets to the face of the surrounding buildings to create the sense of unified space and to reduce the visual intrusion of the rights-of-way for light-rail, bus, and vehicles;
- an *inner terraced garden* (a central landscaped core) which offers a center of repose within the frame of greater activity that occurs at the perimeter of the Square. Stepped terraces with trees, flowers, formal and informal seating provide a natural amphitheater for concerts, plays, and performances. The southern terrace is an open place for sitting in the sun, for café tables, and for viewing performances. The northern terrace is a place of nature—a shaded grove of evergreens. Between and connecting the two is a watercourse, and crossing it is a sequence of stone terraces connecting the northeast and southwest corners of the site in a level path
- open paved areas, extended sidewalks* on each side of the terraces to accommodate pedestrian movements and the loading and unloading of the light-rail transit vehicles, and for *trucks* for the Rose Festival, Art Quake, and other activities;
- a *series of permanent shelters* on the southern perimeter for the transit system passengers;
- auxiliary equipment* including the tents, awnings, a demountable performance "stage and shell," tables and seating to allow for flexible use of the Square and easy storage when not in use.

4. The Pavilions

Although the Square is designed to accommodate a wide variety of events, it has a "center," a permanent place of interest and character which gives life to the surrounding City, day and night, weekends as well as weekdays. This is provided by the two glass *Portland Pavilions*, which create a symbolic image of the City—expressing in their shape, function, placement, and materials the duality between man and nature which seems so strong in the Pacific Northwest.

The Pavilions become a "trace" of the old Courthouse, reflections of both the past and the present. During the day their glass skin reflects sky, Courthouse, and people. At night they glow with light from within, while the Courthouse and the evergreen trees are flood-lit from without. One pavilion is a café, the other a conservatory. Underneath both and connecting to the vaults below the Broadway sidewalk is a space for a museum for Historic Portland and an orientation center for Portland Today.

The Conservatory Pavilion is filled with a great bank of flowers—marginals, petunias, geraniums, narcissus, tulips, roses, fuchsias, azaleas, ranunculus, rhododendrons, ferns—offering a dense, lush, scented, intimate environment—the City of Flowers' "Garden Room." Here water trickles as in the nearby forests and then gathers force and moves out from its source onto the plaza. It flows diagonally across the terrace in a torrent, insides the stone, and subsides in a great basin of pebbles at the foot of the tall, evergreen grove.

The Terrace Café Pavilion is occupied not by nature but by man. Here the passerby can sit, eat, and drink, taking in the activity and pageant of the passing City in the midst of the urban world, yet in a sanctuary. In summer, tables and chairs will extend the café outside the enclosure onto the terraces.

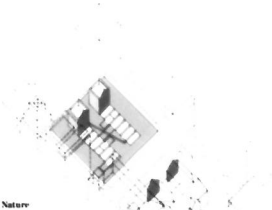
III. A Summary of Design Intentions

The elements of the design are responses to the functional and symbolic requirements of the Competition Program. Their underlying intentions can be summarized as follows:

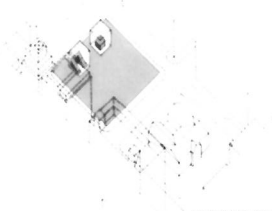
- to *emphasize the unity of the Square and the Courthouse*;
- to *establish a separate character for the new Square within the larger unity, in which aesthetic concerns reinforce the practical requirements*;
- to *maintain the natural slope of the land*; and
- to *create a unique, yet compatible, image and symbol for Portland, which can be a permanent focus of the City's life*.



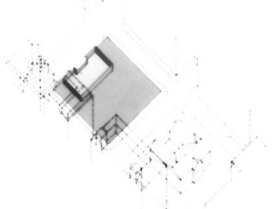
Path of Man and Path of Nature



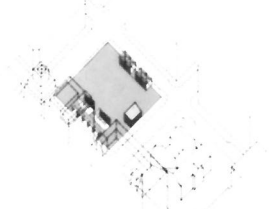
Portland Pavilions



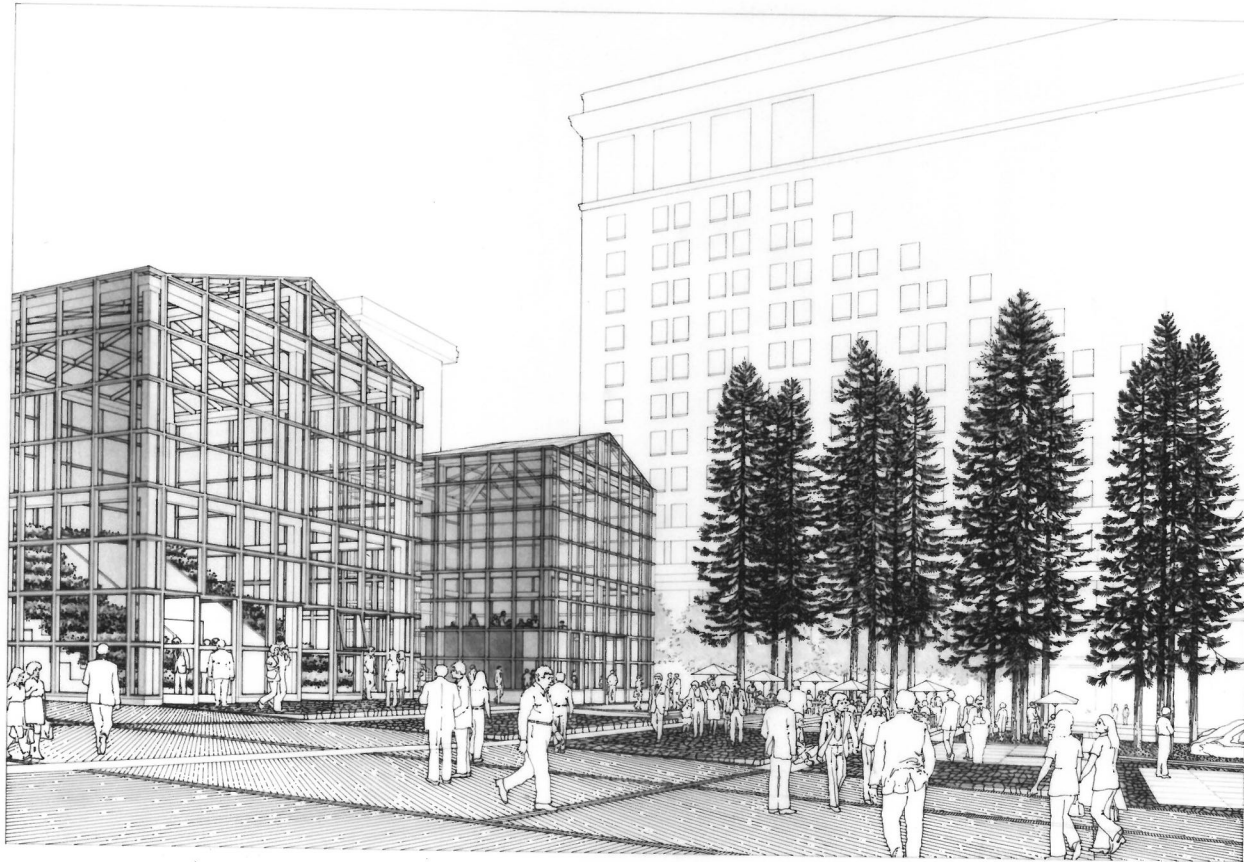
Conservatory and Terrace Café



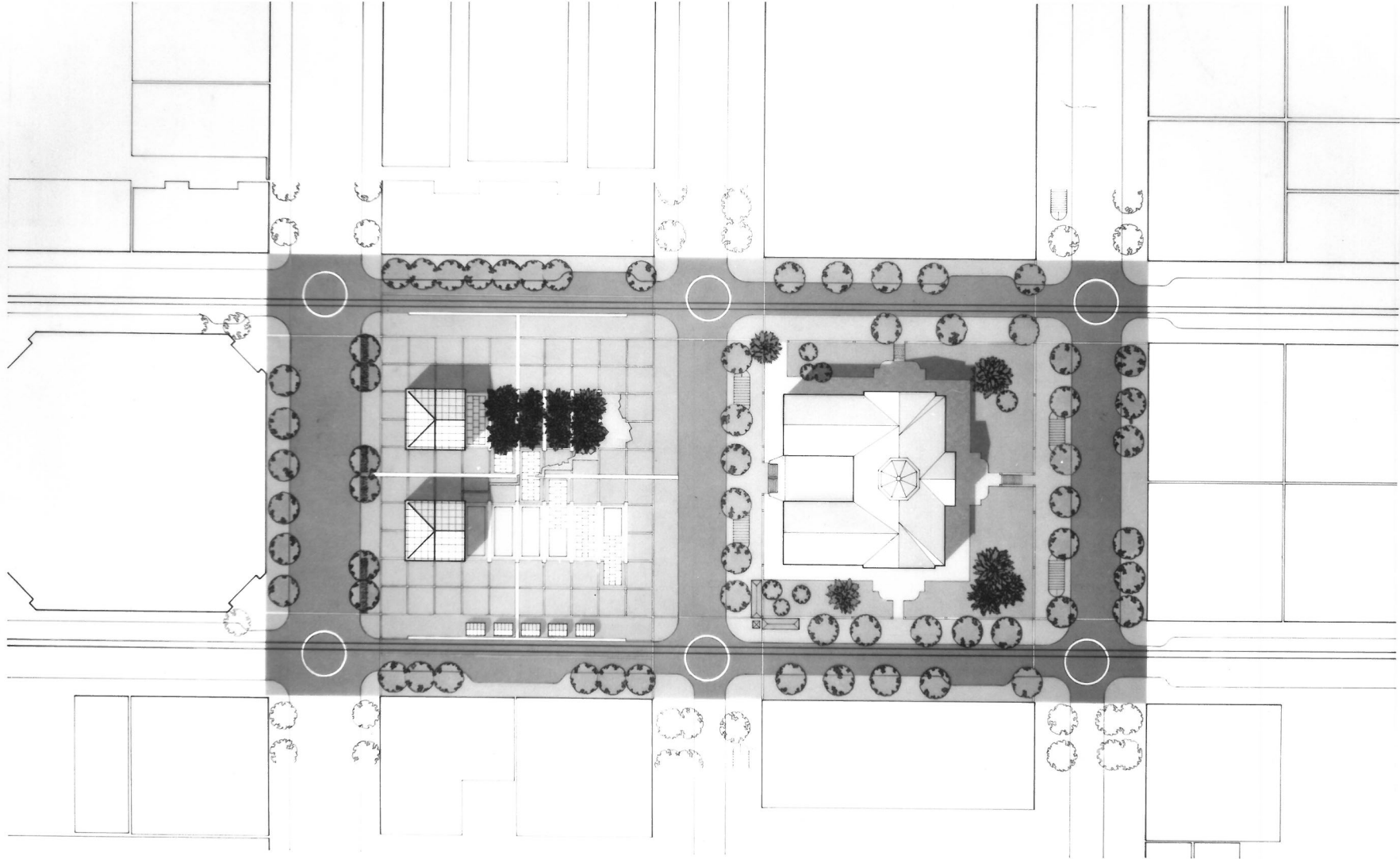
Museum Square



Tents, Bus Shelters and Performance Shell

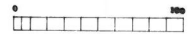


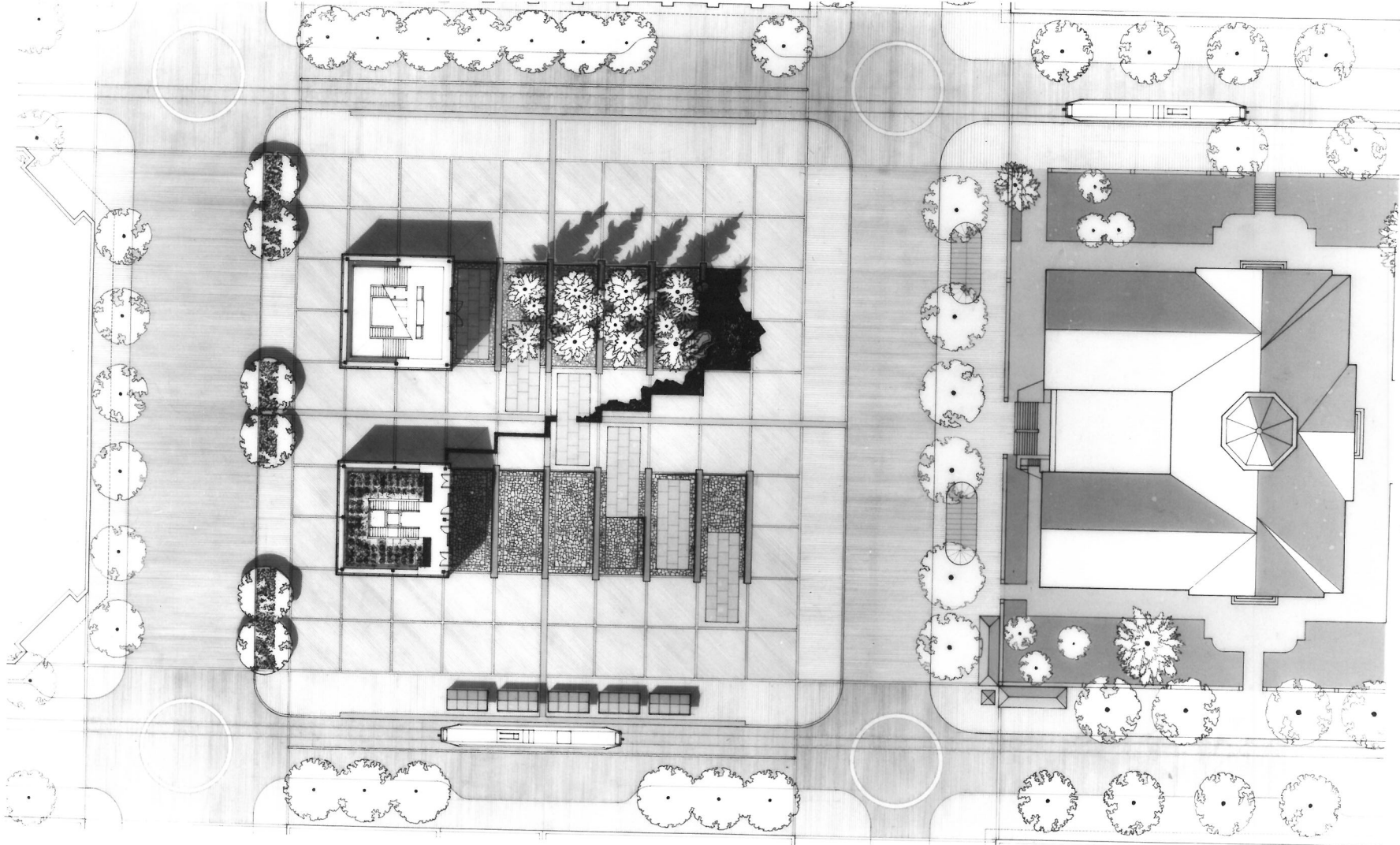
VIEW FROM YAM HILL STREET



Pioneer Courthouse Square
City of Portland, Oregon

SITE PLAN

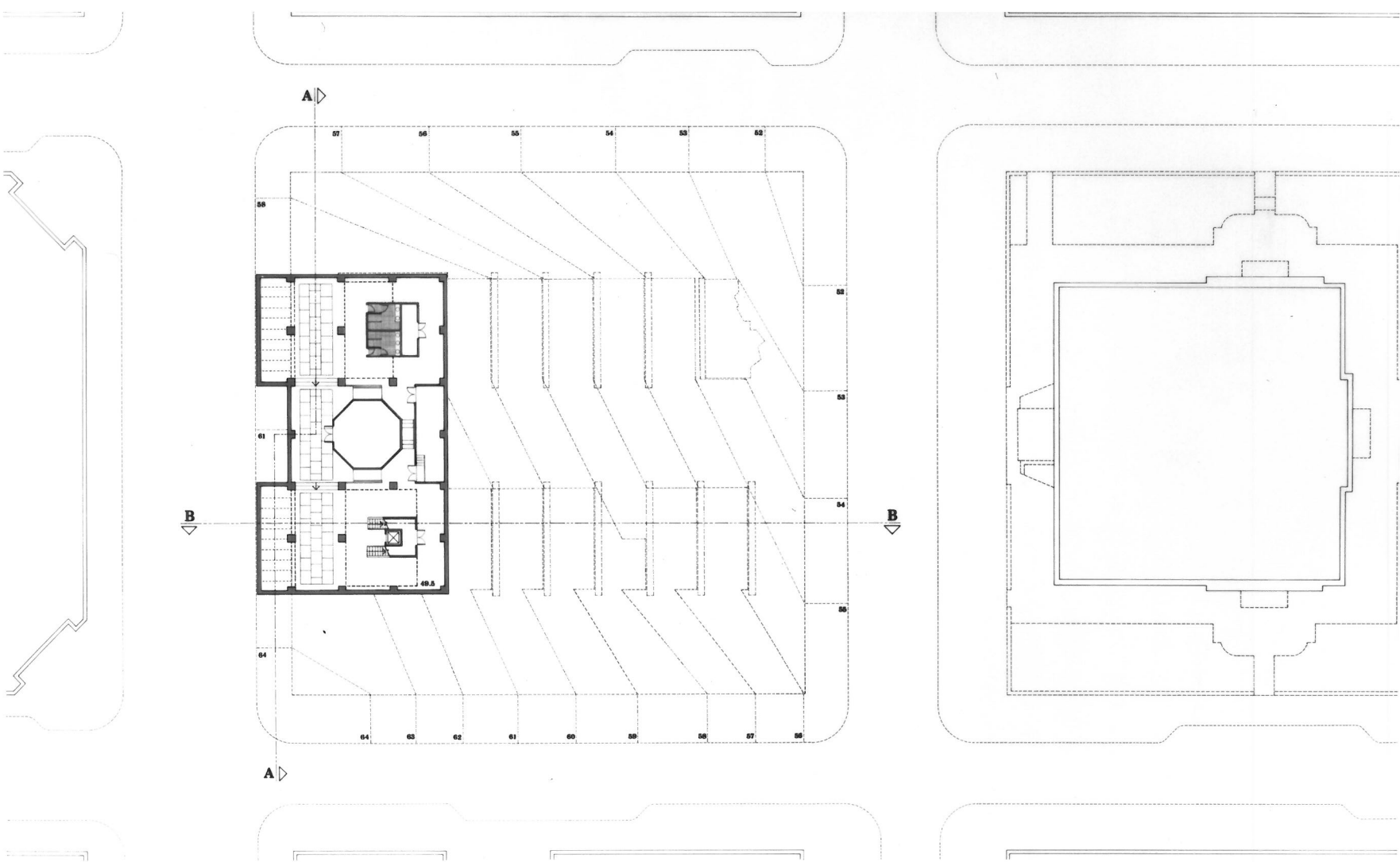




Pioneer Courthouse Square
City of Portland, Oregon

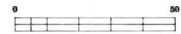
PLAN

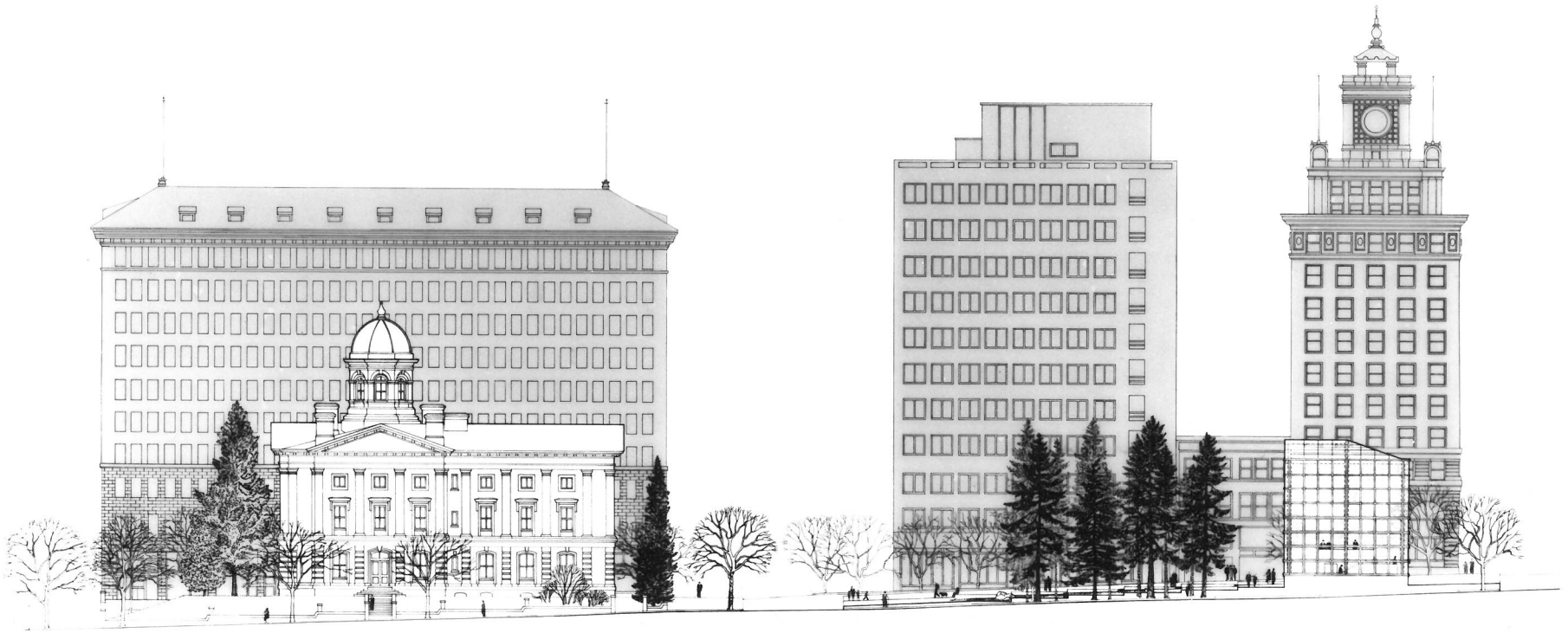




Pioneer Courthouse Square
 City of Portland, Oregon

MUSEUM LEVEL PLAN

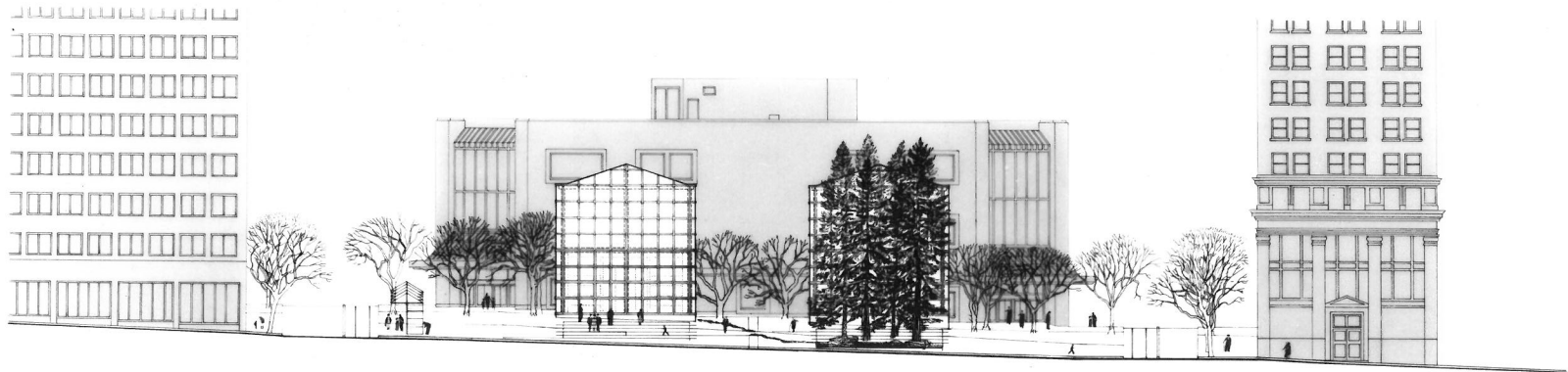




Pioneer Courthouse Square
City of Portland, Oregon

MORRISON STREET ELEVATION

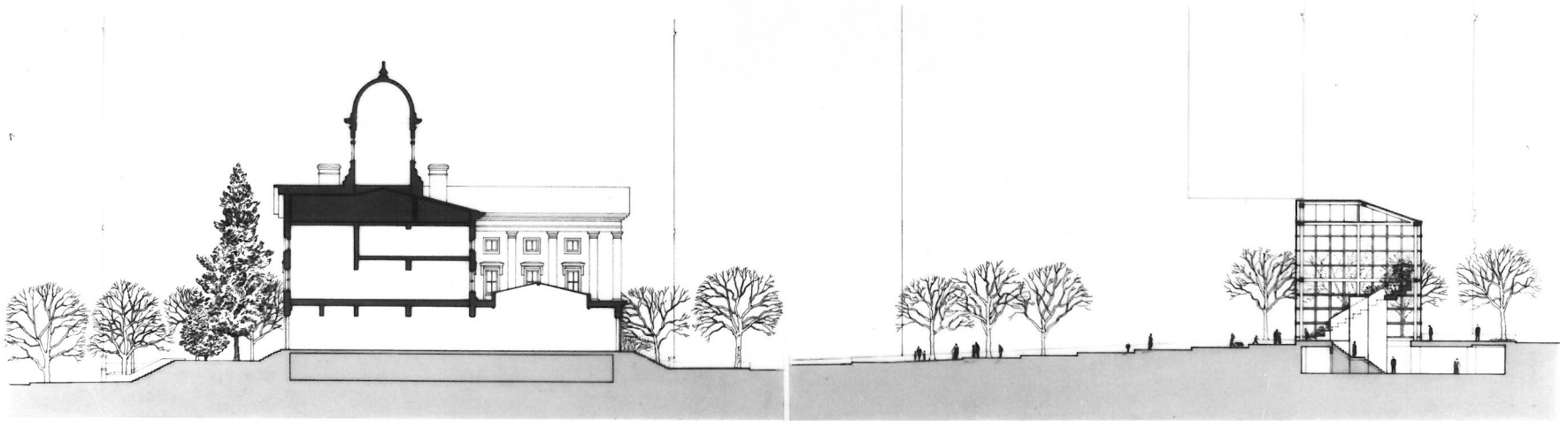
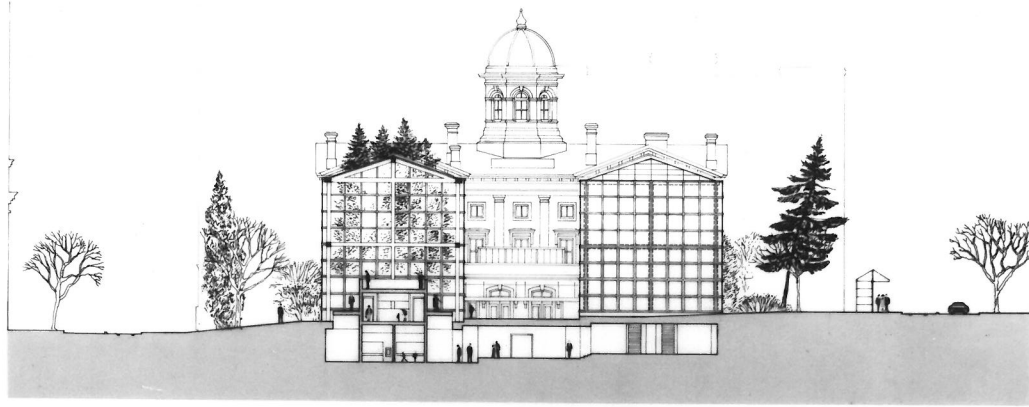




Pioneer Courthouse Square
 City of Portland, Oregon

SW. SIXTH AVENUE ELEVATION
YAMHILL STREET ELEVATION

0 50



Pioneer Courthouse Square
City of Portland, Oregon

SECTION A
SECTION B

