



TRAINING:

COMPREHENSIVE PLAN CHAPTER 8: PUBLIC FACILITIES AND SERVICES

August 8, 2023

Ludwig Salzmann

Infrastructure Investment Coordinator
Ludwig.salzmann@portlandoregon.gov

Barry Manning

Senior City Planner
Barry.manning@portlandoregon.gov



THE BUREAU OF
**PLANNING &
SUSTAINABILITY**



AGENDA

- Overview of Comp Plan Chapter 8: Public Facilities and Services (20 min.)
- Overview Citywide System Plan, CSP (10 min.)
- Discussion/Questions



THE BUREAU OF
**PLANNING &
SUSTAINABILITY**

COMPREHENSIVE PLAN CHAPTERS

CHAPTER 1: The Plan

CHAPTER 2: Community Involvement

CHAPTER 3: Urban Form

CHAPTER 4: Design and Development

CHAPTER 5: Housing

CHAPTER 6: Economic Development

CHAPTER 7: Environment and Watershed Health

CHAPTER 8: Public Facilities and Services

CHAPTER 9: Transportation

CHAPTER 10: Land Use Designation and Zoning

Infrastructure

What is infrastructure investment, and why is it important?



THE BUREAU OF
**PLANNING &
SUSTAINABILITY**

Infrastructure

What is infrastructure investment, and why is it important?



As Portland continues to grow up rather than out, maintaining existing infrastructure becomes increasingly important.

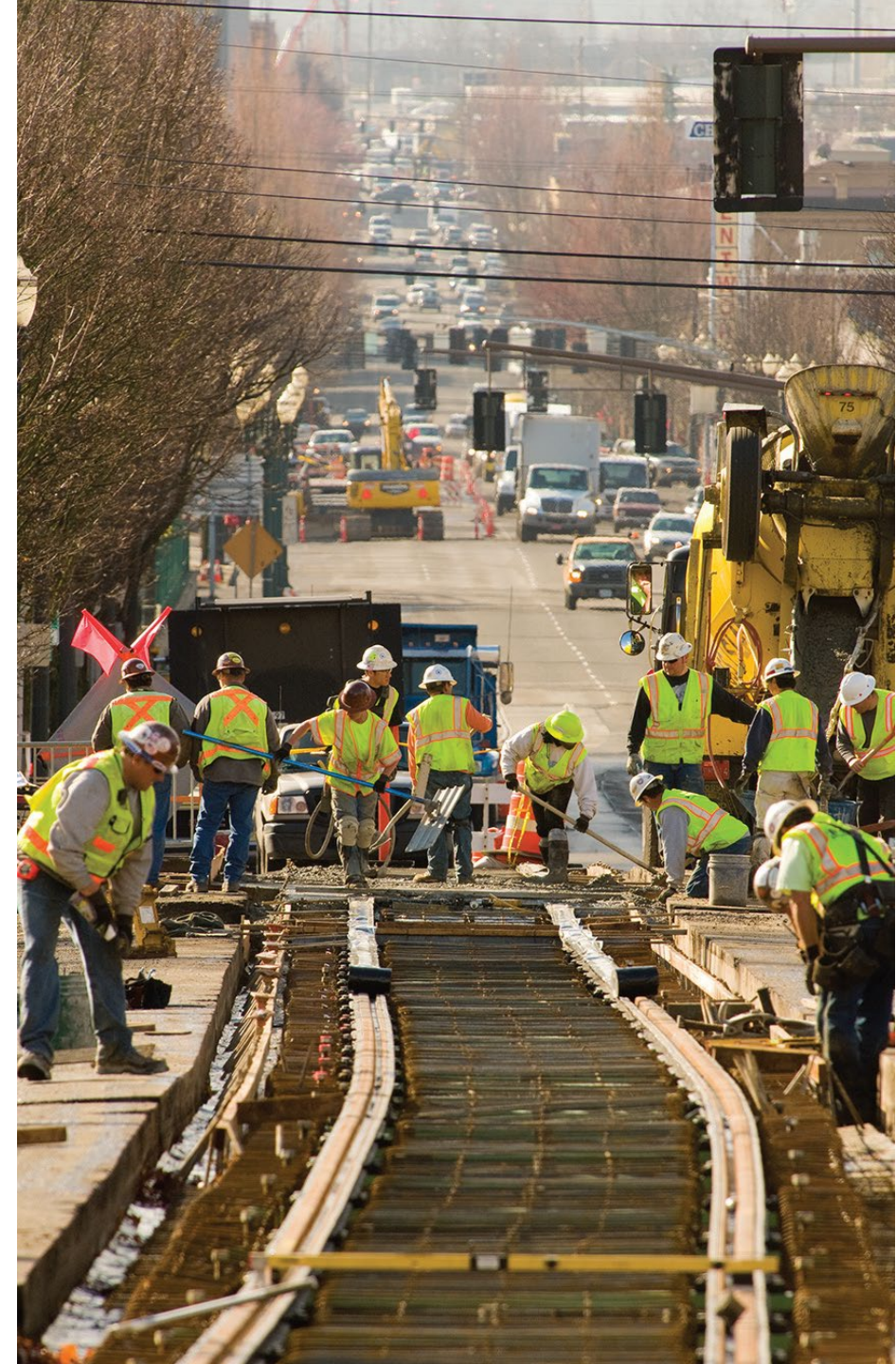


Caring for Portland's Infrastructure

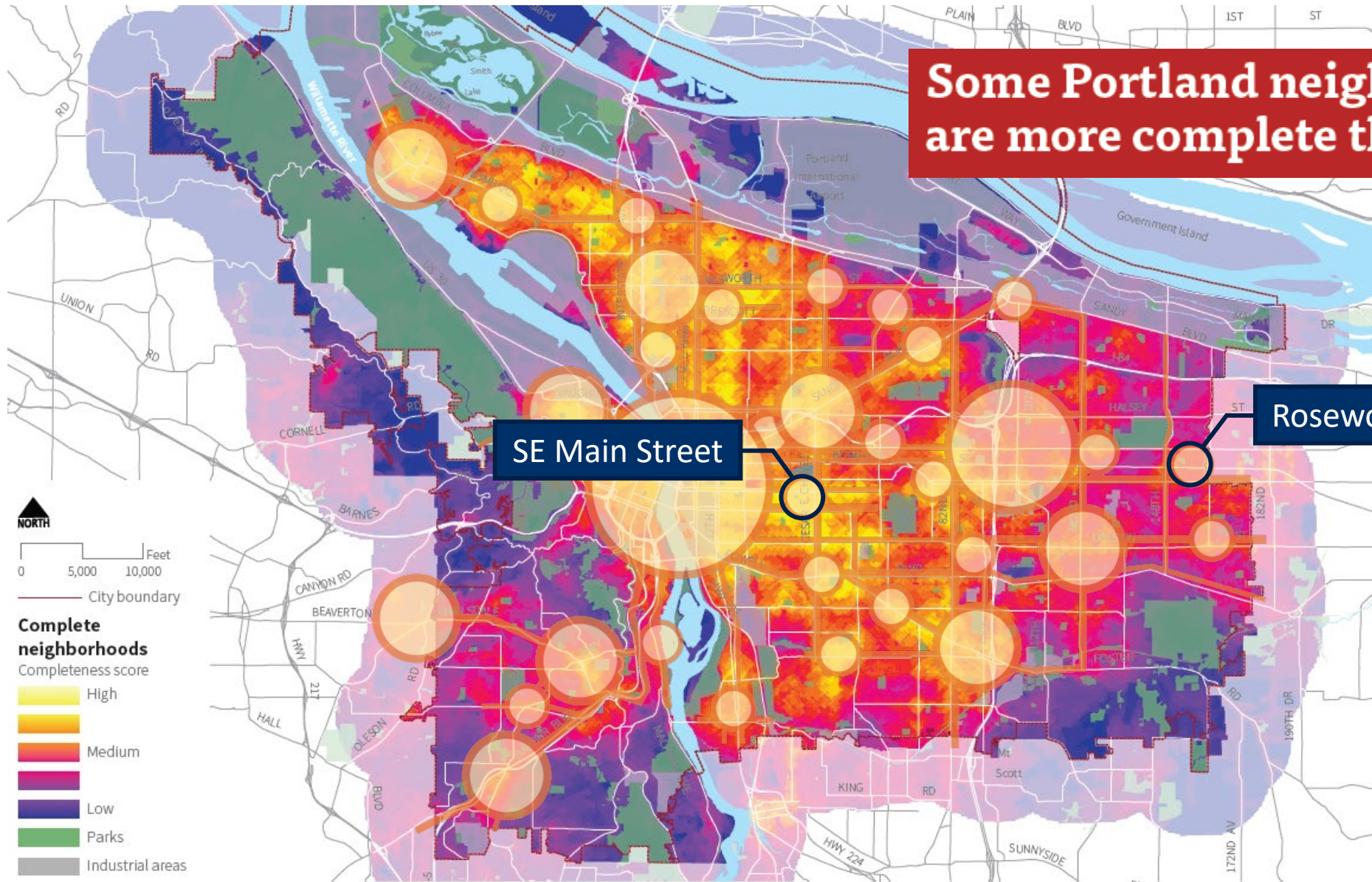
- 1. Maintenance**
- 2. Deficiencies**
- 3. Growth**



THE BUREAU OF
**PLANNING &
SUSTAINABILITY**



Some Portland neighborhoods are more complete than others



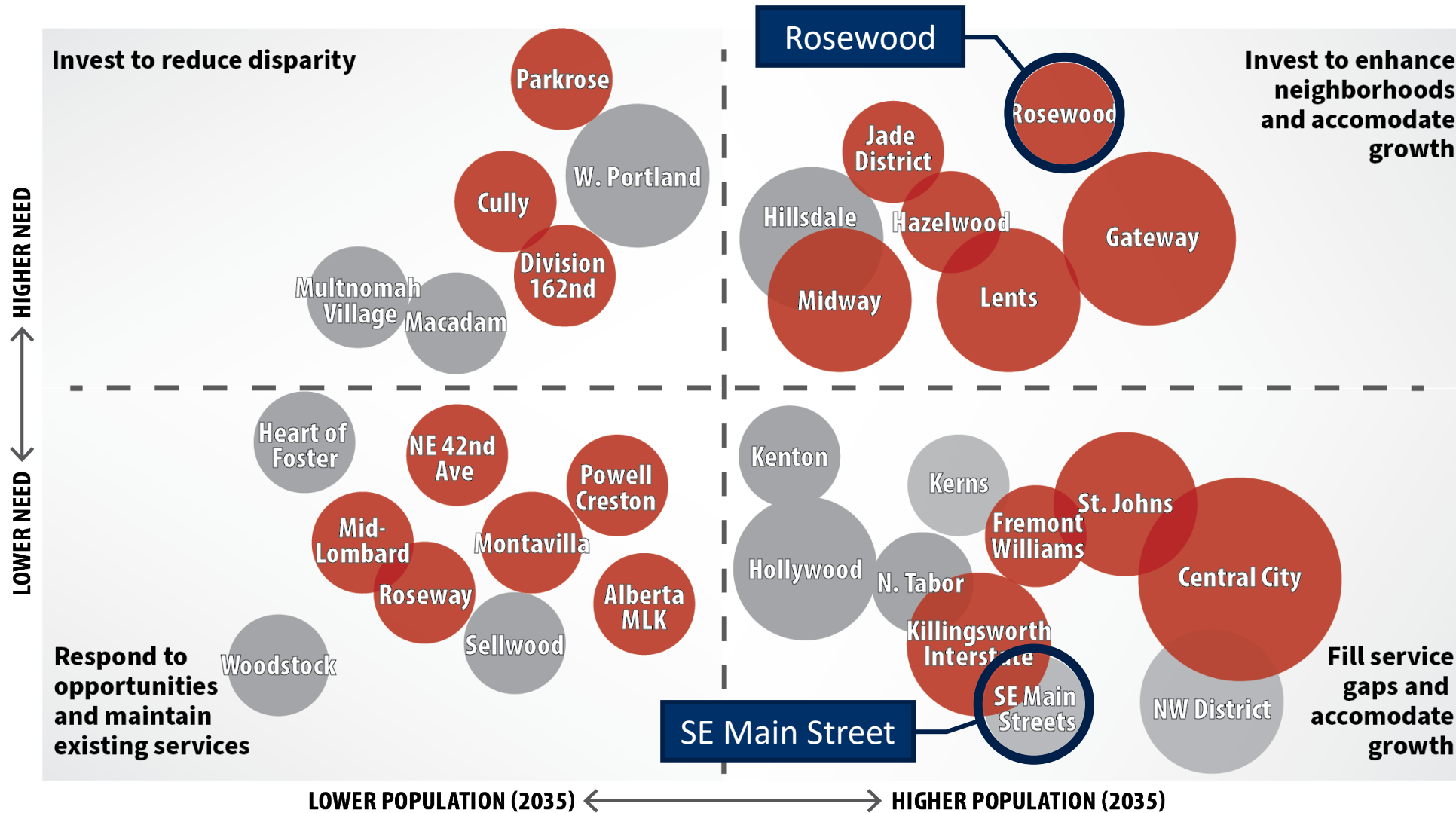
Rosewood

SE Main Street

The City developed the **20-minute neighborhood index** to measure access to community amenities, products and services.



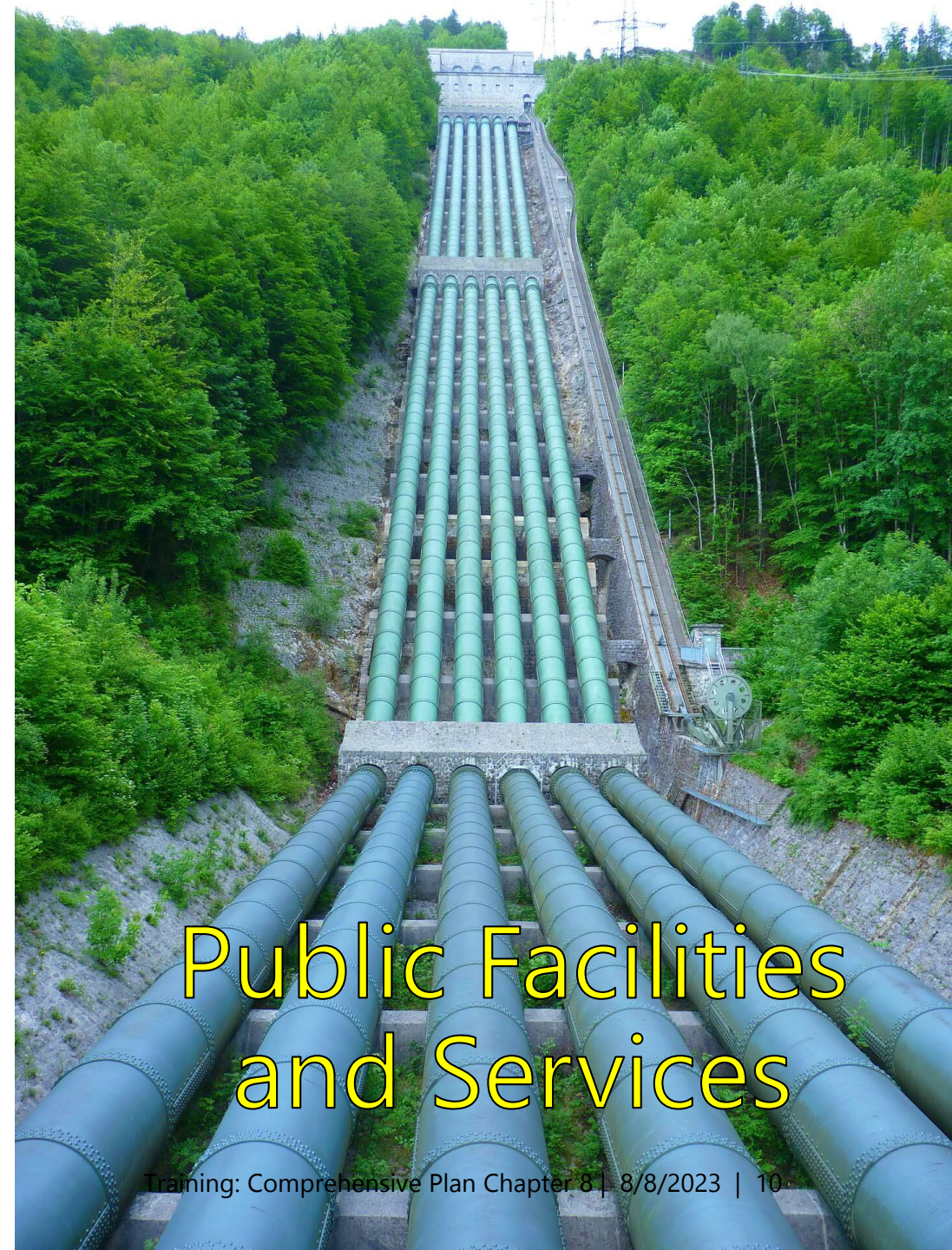
Investment Strategies for Complete Centers



CHAPTER 8: Public Facilities and Services

CHAPTER 8: Intent

- Set clear *standards for service delivery and system expansion* for public rights-of-way, sanitary and stormwater systems, water, parks and recreation, public safety and emergency response, solid waste management, school facilities, technology access, and energy infrastructure.
- Emphasize the *development of facilities that serve multiple goals.*
- Affirm methods for *interagency and intergovernmental coordination.*
- Advance an adaptive management approach to *improve reliability and resilience.*
- Provide more *equitable service delivery.*
- Reduce risks to *human and environmental health and safety.*



Public Facilities
and Services

CHAPTER 8: POLICIES

1. Service provision – 5 policies
2. Service coordination – 5 policies
3. Service extension – 9 policies
4. Public investment – 7 policies
5. Funding – 4 policies
6. Public benefits – 12 policies
7. Public rights-of-way – 14 policies
8. Transportation system – Chapter 9
9. Trails – 9 policies
10. Sanitary and stormwater systems – 15 policies
11. Flood management – 5 policies
12. Water systems – 11 policies
13. Parks and recreation – 12 policies
14. Public safety and emergency response – 8 policies
15. Solid waste management – 1 policies
16. School facilities – 10 policies
17. Technology and communications – 2 policies
18. Energy infrastructure – 2 policies



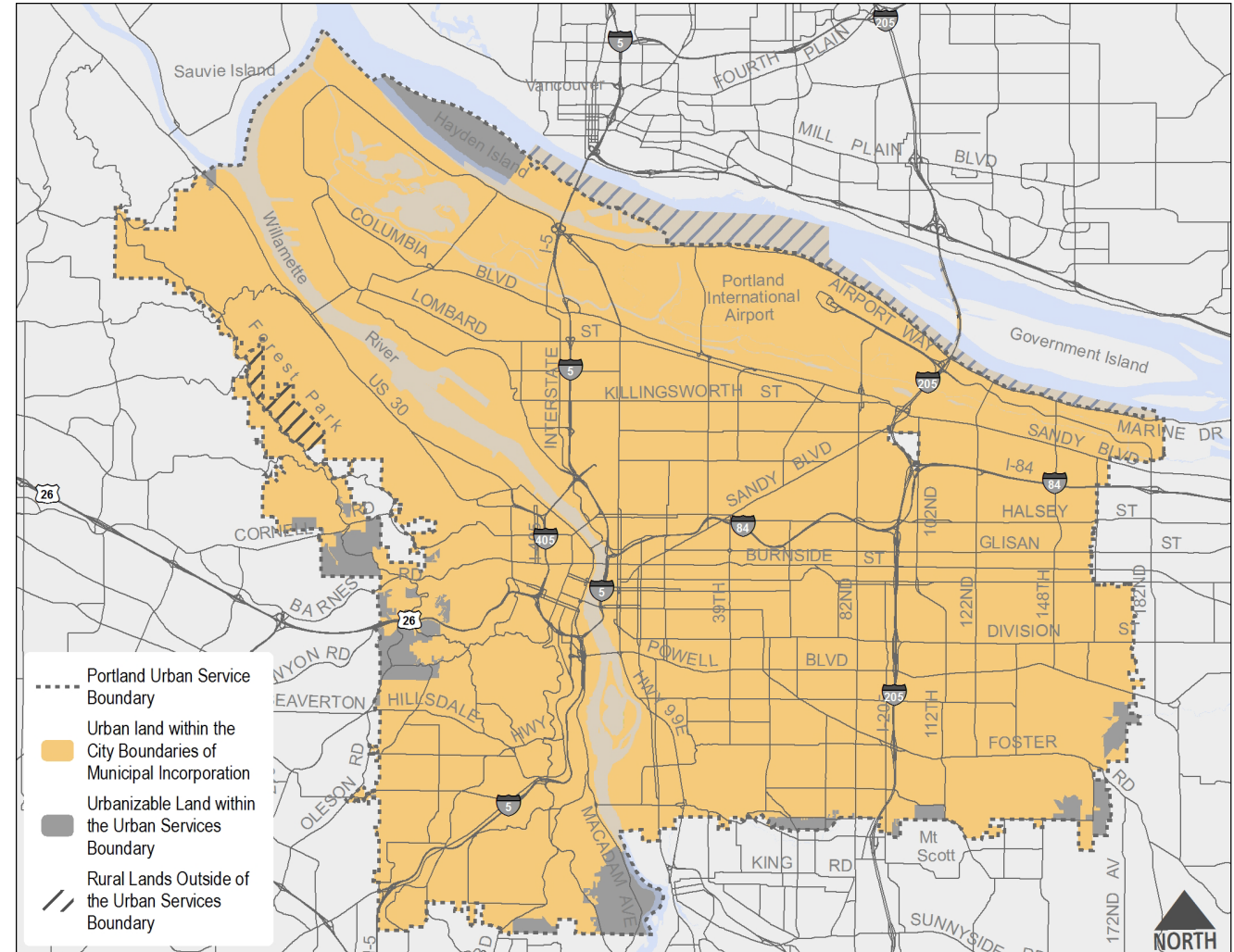
Service Provision and Urbanization

The policies support the maintenance of ***an urban services boundary to coordinate planning and provision of public facilities***, including to areas that are not currently in the City.

Policies also identify which urban facilities and services are and will be provided by the City of Portland within this boundary.

Policies

- Policy 8.1 Urban services boundary
- Policy 8.2 Rural, urbanizable, and urban public facility needs
- Policy 8.3 Urban service delivery
- Policy 8.4 Supporting facilities and systems
- Policy 8.5 Planning service delivery



Service Coordination; Service Extension

Service Coordination – Portland is the primary provider of many urban facilities and services within city limits, but *other public and private agencies also provide public facilities and services.*

Policies identify other public facility providers and encourage planning and service coordination — both within the city boundaries and between the City and partner agencies — to meet the needs of people and businesses

- Policies 8.6 – 8.10.

Service Extension – Policies in this section outline *the City's approach towards annexation and service extension to newly-incorporated areas.*

- Policies 8.11-8.19

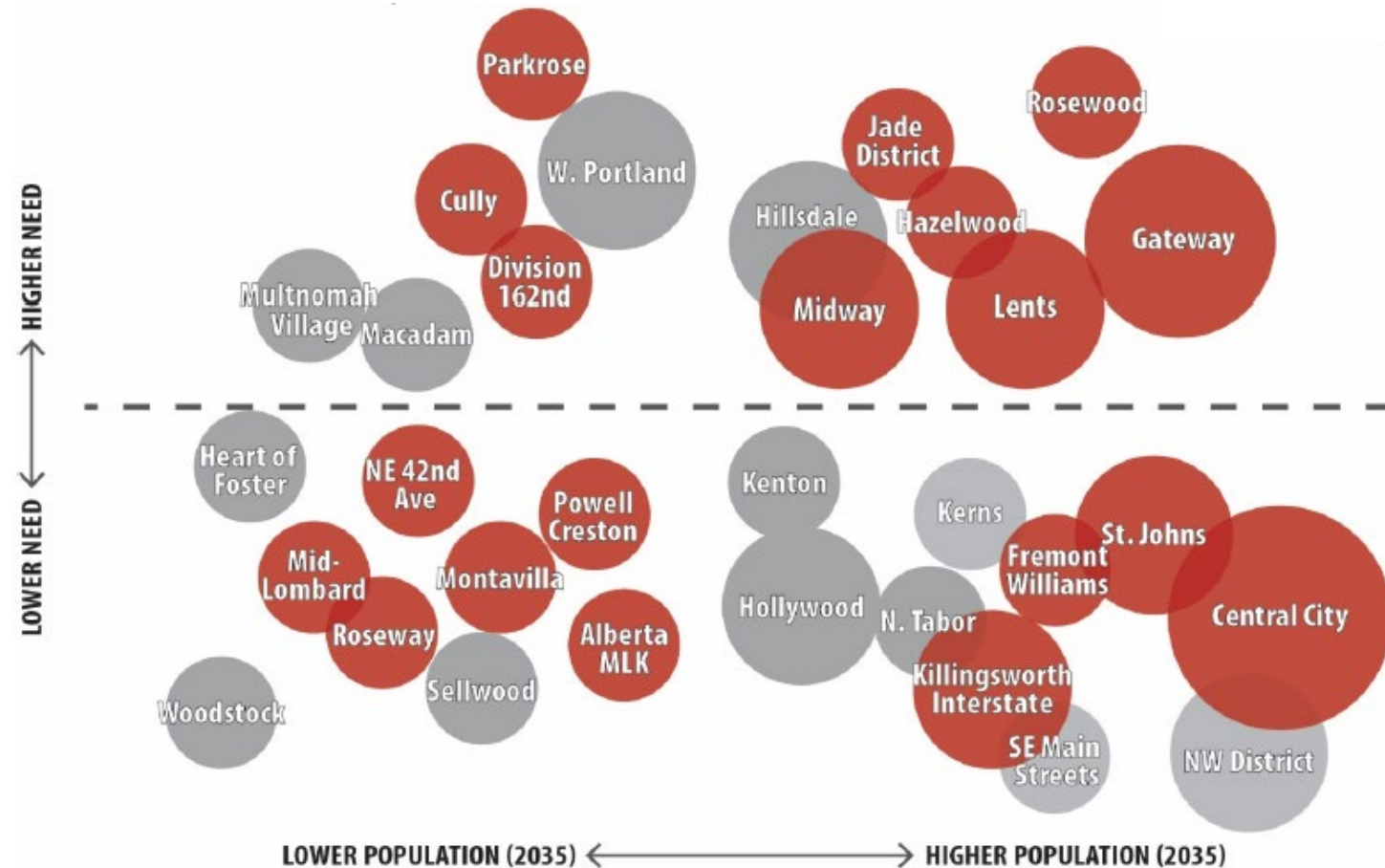


Public Investment

Policies support investments in Portland's public facility systems to maintain and improve system capacity, resolve service deficiencies, and properly manage assets.

Policies

- Policy 8.20 Regulatory compliance
- Policy 8.21 System capacity
- Policy 8.22 Equitable service
- Policy 8.23 Asset management
- Policy 8.24 Risk management
- Policy 8.25 Critical infrastructure
- Policy 8.26 Capital programming



Funding

Portland's investments in the public facility systems necessary to serve designated land uses are funded through a variety of mechanisms, including taxes, user rates and fees, system development charges, and partnerships.

Policies

- Policy 8.27 Cost-effectiveness
- Policy 8.28 Shared costs
- Policy 8.29 System development
- Policy 8.30 Partnerships



Public Benefits

The policies support investments to improve equity, economic prosperity, human and watershed health, and resiliency while minimizing negative impacts. They also recognize that the public facility and service needs, and the appropriate approaches to meeting those needs, vary throughout the city.

Policies

- Policy 8.31 Application of Guiding Principles
- Policy 8.32 Community benefits
- Policy 8.33 Community knowledge and experience
- Policy 8.34 Resource efficiency
- Policy 8.35 Natural systems
- Policy 8.36 Context-sensitive infrastructure
- Policy 8.37 Site- and area-specific needs
- Policy 8.38 Age-friendly public facilities



Public Right of Way

The policies support the role of public rights-of-way in providing **multiple public services**, including multimodal transportation access and movement, stormwater management, water distribution, private utilities, tree canopy, and community use, among others. Current practices and the Portland Plan regard public rights-of-way as a coordinated and interconnected network that provides a place for these multiple public facilities and functions.

Policies

Policy 8.39 Interconnected network

Policy 8.40 Transportation function

Policy 8.41 Utility function

Policy 8.42 Stormwater management function

Policy 8.43 Trees in rights-of-way

Policy 8.44 Community uses.

Policy 8.45 Pedestrian amenities

Policy 8.46 Commercial uses

Policy 8.47 Flexible design

Policy 8.48 Corridors and City Greenways

Policy 8.50 Undergrounding

Policy 8.51 Right-of-way vacations

Policy 8.52 Rail rights-of-way

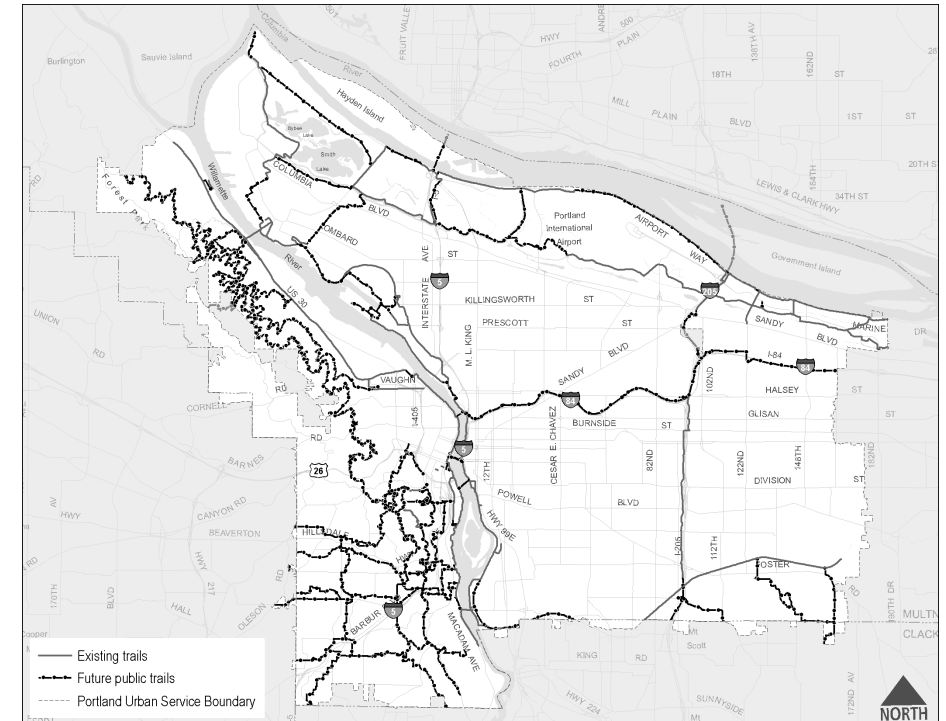


Trails

The City of Portland's trail system is ***a key part of both the City's multi-modal transportation system and its recreation system***. Trails within this system take many different forms and are located within the right-of-way and on public and private property. Trails provide Portlanders with ***local and regional pedestrian and bicycle connections*** and access to many key destinations within the city. They also provide a place to ***recreate and allow Portlanders to experience the city's parks and natural areas***. Trails play a particularly important role in meeting pedestrian and bicyclist ***mobility and connectivity needs in western neighborhoods***. The policies in this section support continued improvement, management, and coordination of the trail system.

Policies

- Policy 8.53 Public trails
- Policy 8.54 Trail system connectivity
- Policy 8.55 Trail coordination
- Policy 8.56 Trail diversity
- Policy 8.57 Public access requirements
- Policy 8.58 Trail and City Greenway coordination
- Policy 8.59 Trail and Habitat Corridor coordination
- Policy 8.60 Intertwine coordination



Sanitary and stormwater systems, flood management and water systems

The City's sewer and drainage system accommodates **Portland's current and future needs**. It also **protects public health, water quality, and the environment**.

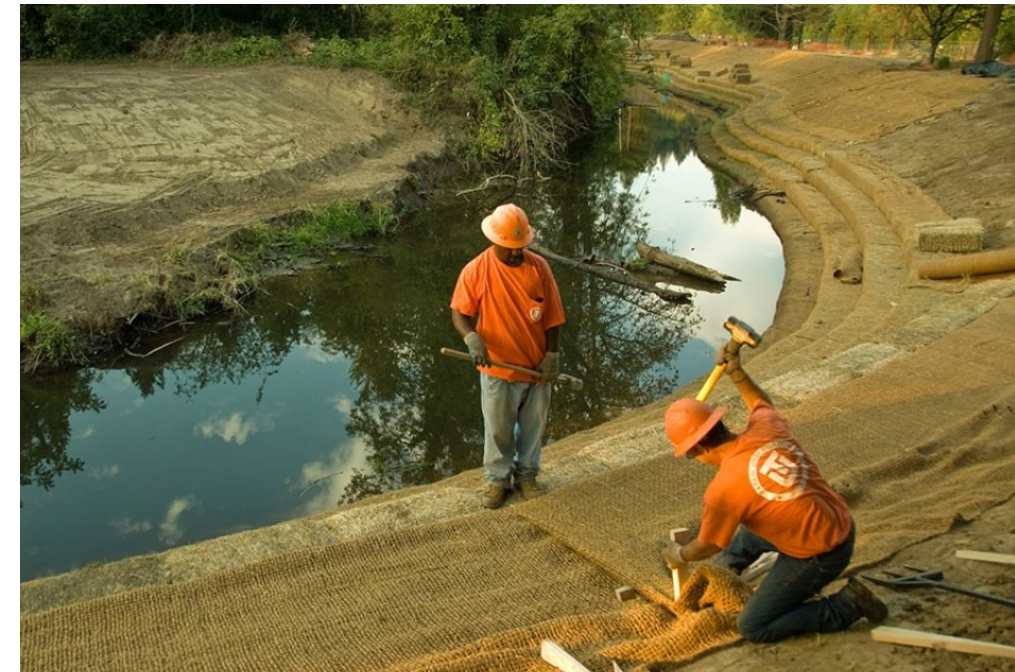
- **Policies 8.61 – 8.75**

Portland's **floodplain areas** are primarily along the Columbia River, Willamette River, Columbia Slough, Johnson Creek, and low elevation areas along smaller tributary streams.

- **Policies 8.76 – 8.80**

The City works to provide **reliable water service** that meets or exceeds both customer and regulatory (...).

- **Policies 8.81 – 8.91**



Parks and recreation

The City of Portland manages more than 11,000 acres of **developed parks** and **natural areas**, as well as local and **regional trails**, the urban **tree canopy**, and the City of Portland’s **community gardens**. It offers thousands of programs for people of all ages at its community centers, swimming pools, and other recreational facilities.

Policies

- Policy 8.92 Acquisition, development, and maintenance
- Policy 8.93 Service equity
- Policy 8.94 Capital programming
- Policy 8.95 Park planning
- Policy 8.96 Recreational trails
- Policy 8.97 Natural resources

- Policy 8.98 Urban forest management
- Policy 8.99 Recreational facilities
- Policy 8.100 Self-sustaining Portland International Raceway (PIR)
- Policy 8.101 Self-sustaining and inclusive golf facilities
- Policy 8.102 Specialized recreational facilities
- Policy 8.103 Public-private partnerships



Public safety and emergency response

Coordinated, effective, and efficient public safety and emergency response services are essential for a safe and resilient city.

Policies

- Policy 8.104 Emergency preparedness, response, and recovery coordination
- Policy 8.105 Emergency management facilities
- Policy 8.106 Police facilities
- Policy 8.107 Community safety centers
- Policy 8.108 Fire facilities
- Policy 8.109 Mutual aid
- Policy 8.110 Community preparedness
- Policy 8.111 Continuity of operations



THE BUREAU OF
**PLANNING &
SUSTAINABILITY**



Solid Waste Management; School Facilities

Solid Waste Management – Solid waste, composting, and recycling facilities and services are *regulated and provided through a partnership between the City of Portland, Metro, franchised haulers and private companies*. The policy supports *sustainable waste reduction, recovery, and management, and the use and reuse of materials prior to disposal*.

- **Policy 8.112**

School Facilities - Public education *is provided by six public school districts, as well as by colleges and universities*. The City partners with school districts on school facility planning and siting. By encouraging school facilities to be *multi-functional neighborhood anchors, designed and programmed to serve community members of all generations and abilities*, these policies also help implement the concept of Portland as an age-friendly city.

- **Policies 8.113 – 8.122**



Technology & Communications; Energy Infrastructure

Technology and Communications – *Private utilities and companies are the primary providers of technology and communication facilities* and services to the general public. The City also provides services to support City and partner agency service delivery. The policies encourage innovation in emerging technologies and systems that have the *potential to make Portland a cleaner, safer, and more efficient, resilient, and affordable city.*

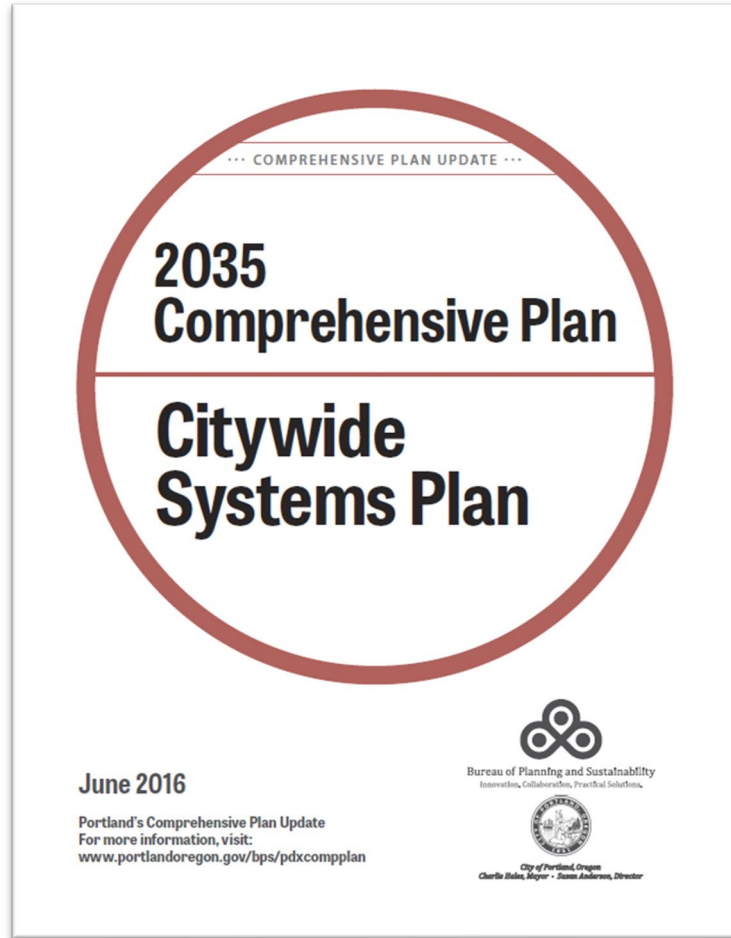
- Policies 8.123-8.124

Energy Infrastructure - *Energy facilities and services are primarily provided by private utilities and companies.* The City of Portland promotes efficient, sustainable, and resilient energy resources, production, distribution, and consumption. The policies ... support Oregon’s Statewide Planning Goal 13 – Energy Conservation... They ensure that *as the City makes land use decisions, it removes barriers to promoting efficient and sustainable energy practices.*

- Policies 8.125 – 8.126



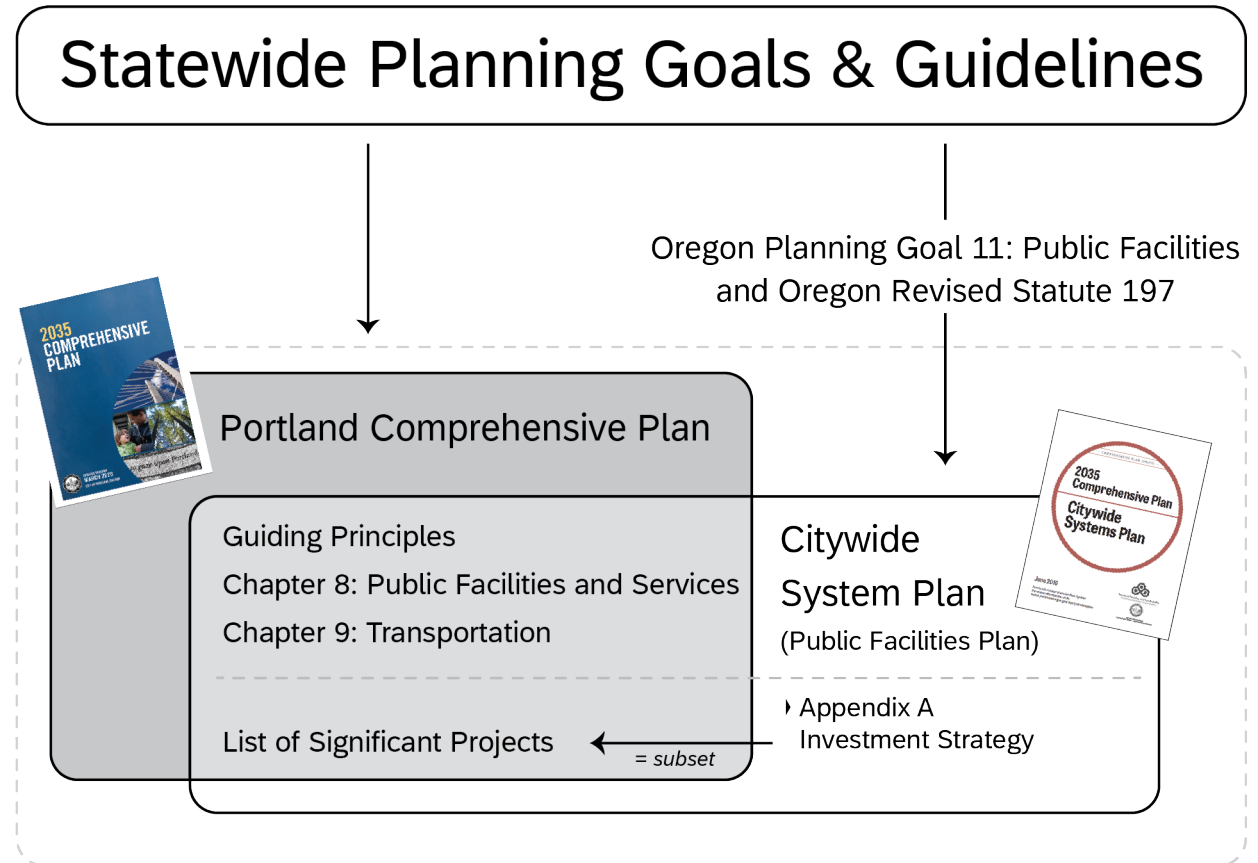
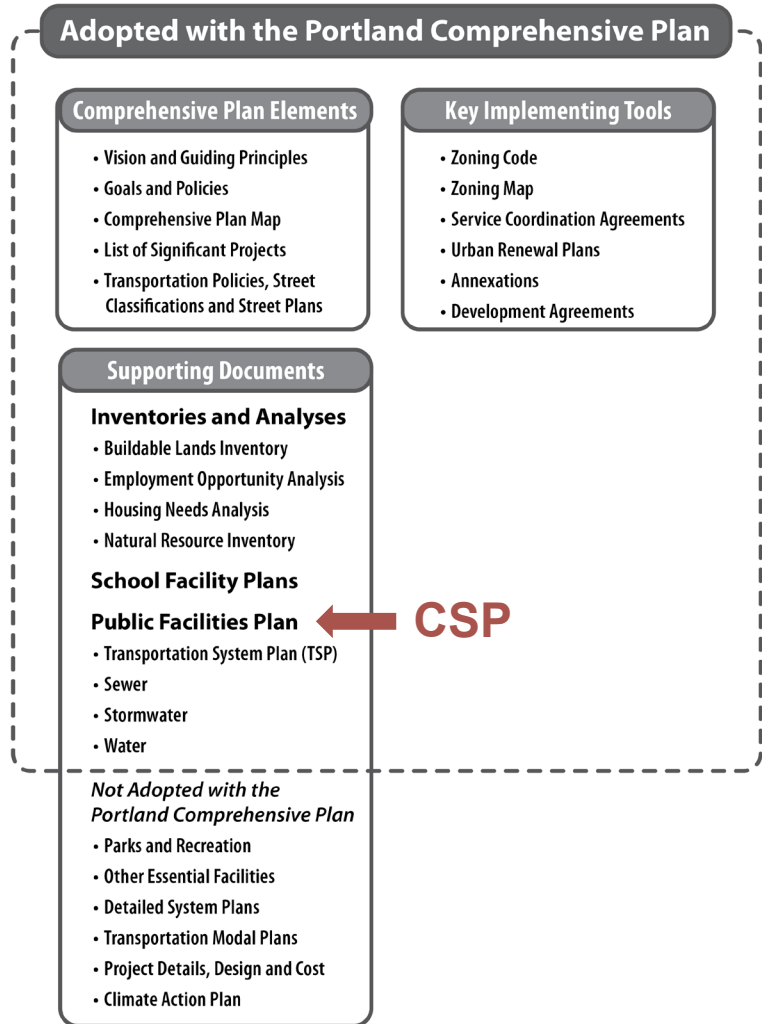
Citywide Systems Plan (CSP)



The Citywide Systems Plan is a **20-year** (2013-2033), coordinated municipal infrastructure plan for areas within the City of Portland's **urban service boundary**.

The State of Oregon requires cities to develop and implement a **public facilities plans** (Planning Goal 11: Public Facilities and Oregon Revised Statute 197). Part of the CSP serve as Portland's public facilities plan.

Citywide Systems Plan (CSP)



CHAPTER 8 Key Takeaways:

- Infrastructure and other services
 - City and other providers
- Coordination w/ multiple agencies
- Maintenance, deficiencies, and growth
- Consider as part of planning process

QUESTIONS & DISCUSSION

