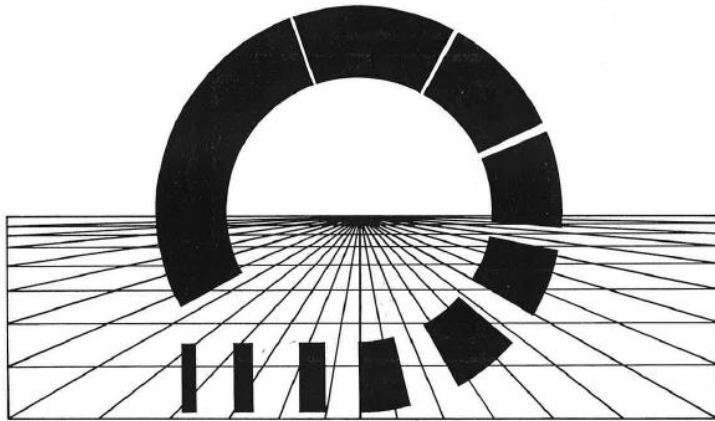


# 40 MILE LOOP

40<sup>TH</sup> ANNIVERSARY

1983 - 2023

The *40 Mile Loop Master Plan* is the planning document that lead to the incorporation of trail alignments in local government plans.

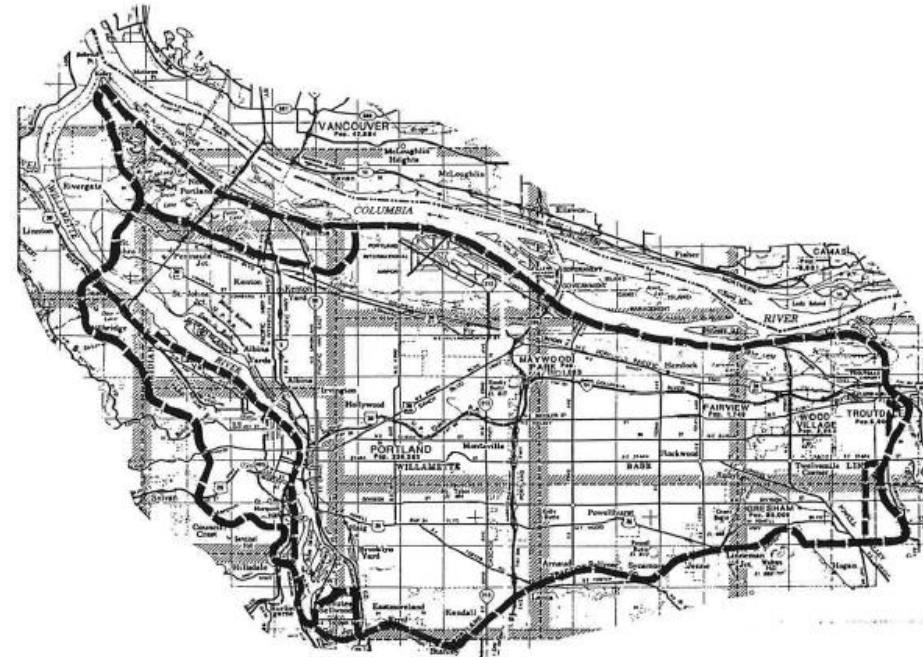


# 40 MILE LOOP MASTER PLAN

MAY 1983

PREPARED FOR: 40 MILE LOOP LAND TRUST

PREPARED BY: DAVID EVANS and ASSOCIATES, INC.



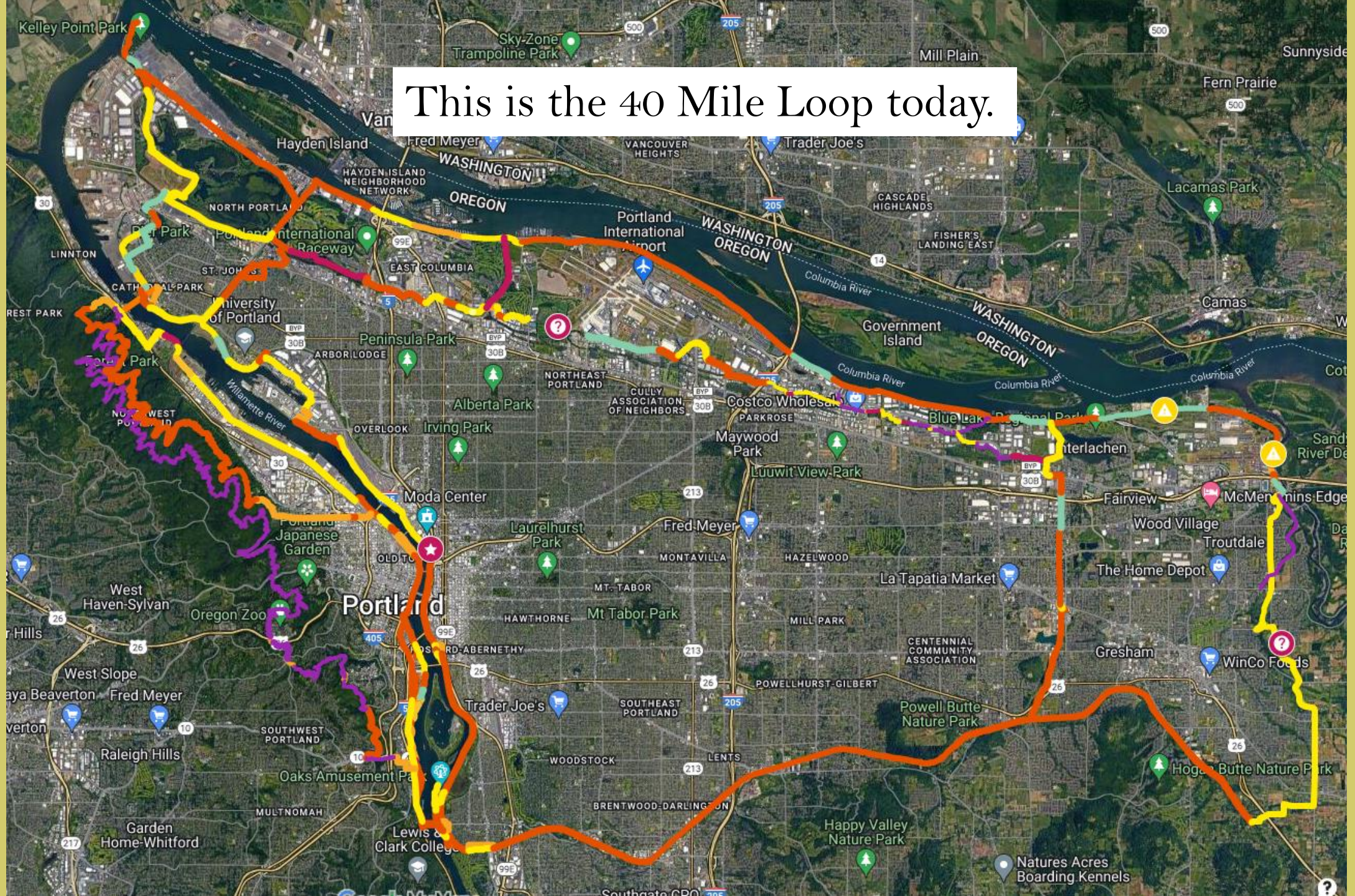
——— Hiking and or Bicycle Trail  
——— Bicycle Trail Only



40 Mile Loop Trail Route



This is the 40 Mile Loop today.





The 40 Mile Loop is an assemblage of named trails.

Peninsula Crossing

Marine Drive Trail

North Portland Greenway

Columbia Slough

Sandy River Greenway

Leif Erickson

Eastbank Esplanade

Gresham Fairview

Wildwood

Springwater Corridor

Troutdale to Springwater

Marquam Trail

Willamette Greenway



The 40 Mile Loop does not include the much talked about Green Loop.

Peninsula Crossing

Marine Drive Trail

Wabun Trail

North Portland Greenway

Columbia Slough

Sandy River Greenway

Leif Erickson

Eastbank Esplanade

Gresham Fairview

Wildwood

Green Loop

Springwater Corridor

Troutdale to Springwater

Marquam Trail

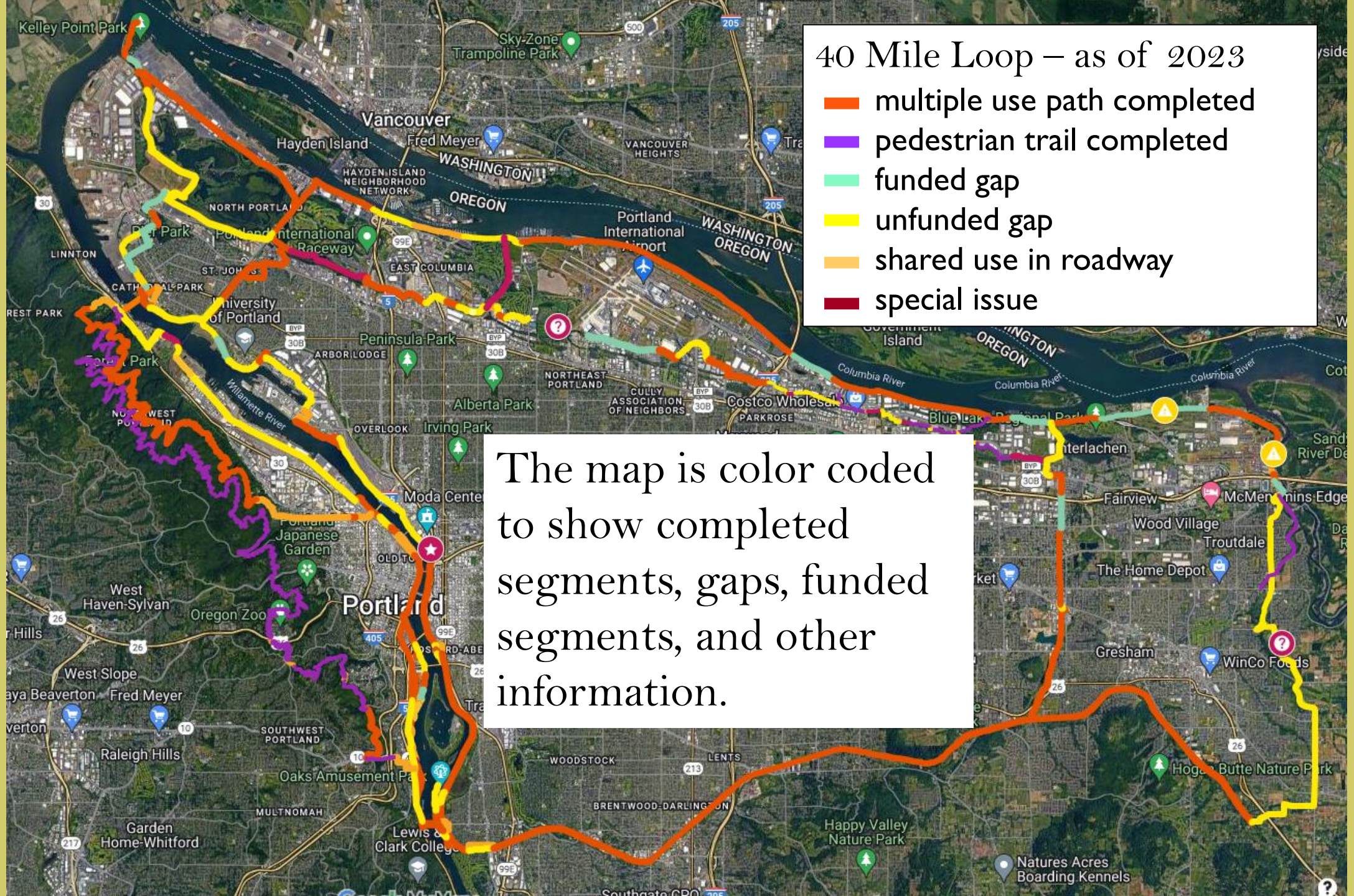
Willamette Greenway



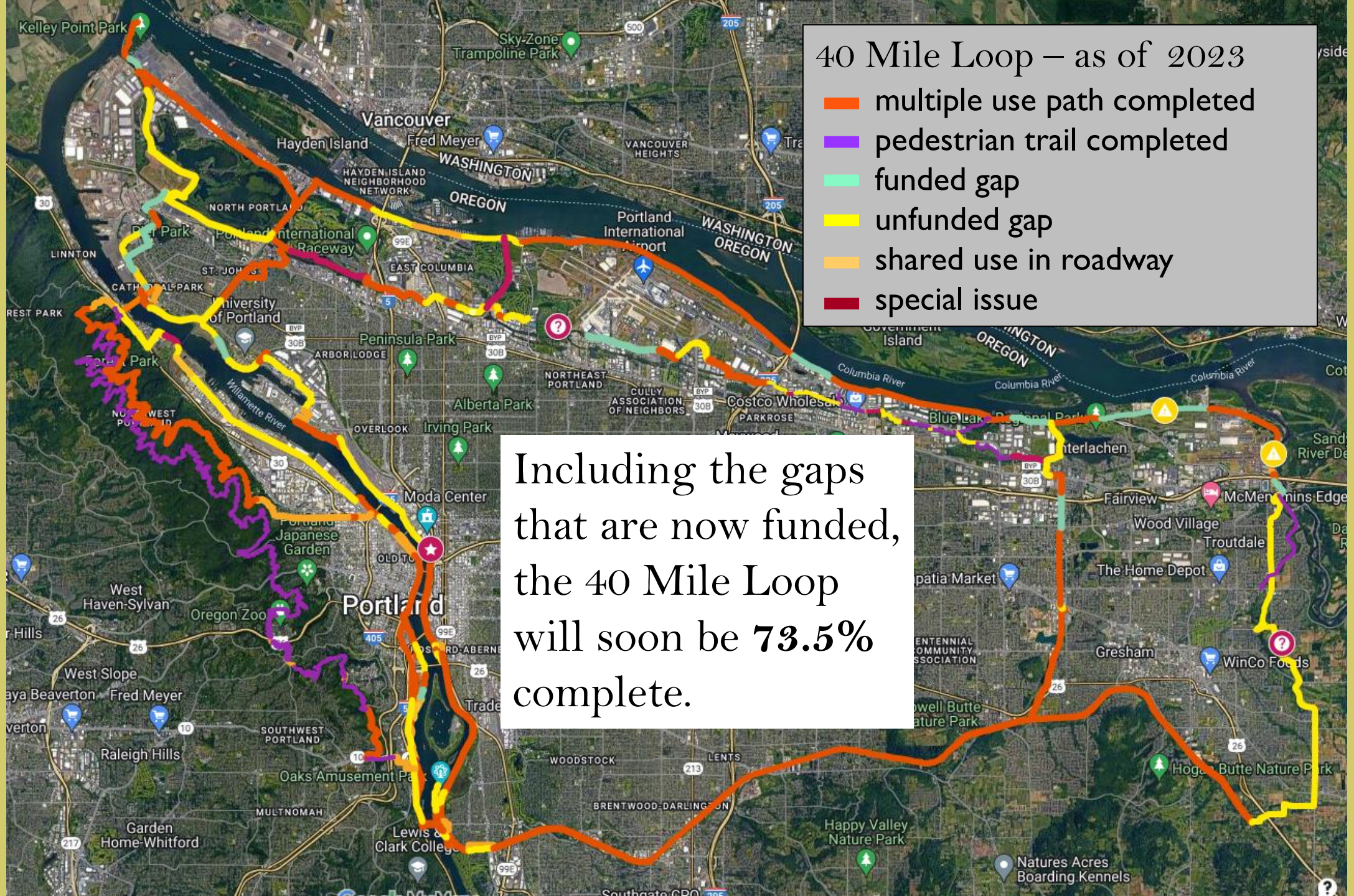


The overall length  
of the 40 Mile Loop  
is actually 150 miles.









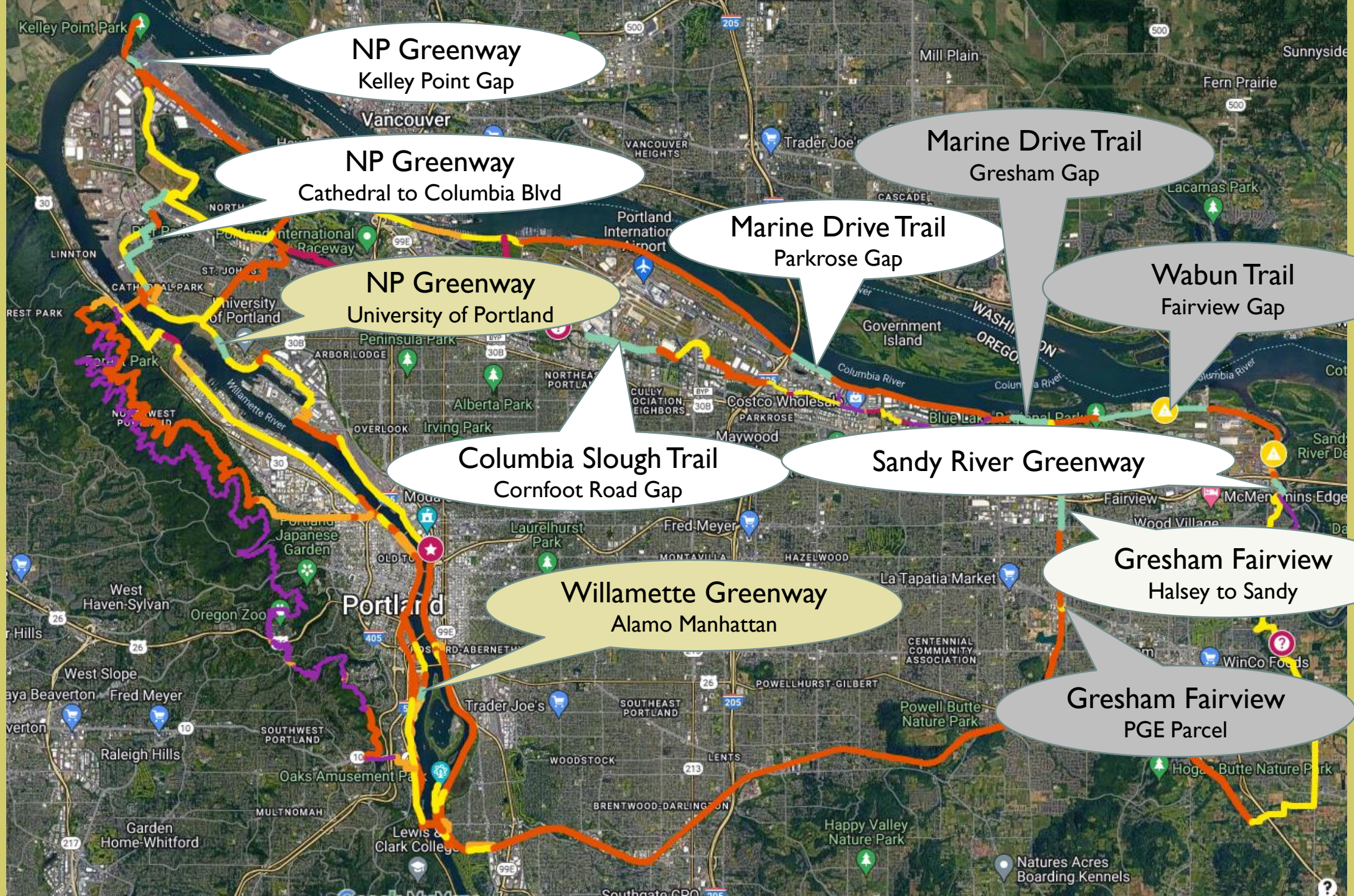


**2022 was the most successful funding year for the 40 Mile Loop since the Vera Katz Eastbank Esplanade was completed in 2001.**

Thanks to the availability of funds from and through Metro, and thanks to strong proposals from our local partners, 6 projects on the 40 Mile Loop were funded in the total amount of \$20,082,079.

Marine Drive Trail	Portland PP&R	\$2,261,645
North Portland Greenway, Kelley Point	Portland PP&R	\$1,881,008
North Portland Greenway, Cathedral/Columbia Blvd	Portland PP&R	\$4,860,647
Columbia Slough Trail, Cornfoot Road	PBOT & Port	\$4,900,000
Gresham Fairview Trail, Halsey/Sandy	Gresham	\$4,232,979
Sandy River Greenway	Troutdale	\$1,945,800





NP Greenway  
Kelley Point Gap

NP Greenway  
Cathedral to Columbia Blvd

NP Greenway  
University of Portland

Marine Drive Trail  
Gresham Gap

Marine Drive Trail  
Parkrose Gap

Wabun Trail  
Fairview Gap

Columbia Slough Trail  
Cornfoot Road Gap

Sandy River Greenway

Willamette Greenway  
Alamo Manhattan

Gresham Fairview  
Halsey to Sandy

Gresham Fairview  
PGE Parcel

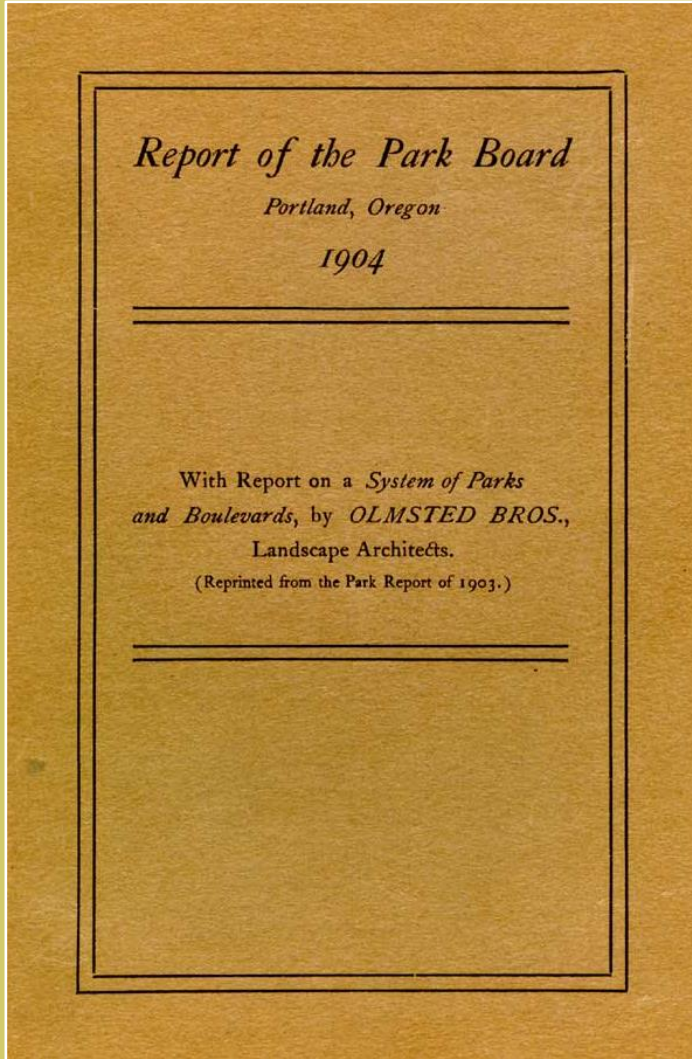


# 40 Mile Loop challenges and opportunities for 2023-2024.

The 40 Mile Loop has work to do. We ask that the City of Portland help us take on the following:

- **Camping on and adjacent to trails.** Our #1 Public Safety issue.
- **North Portland Greenway advocacy.** Our most ambitious goal is to connect the Vera Katz Eastbank Esplanade to Kelley Point Park!
- **Marine Drive Trail & Interstate Bridge Replacement & Levee Raise.**
- **Columbia Slough Trail.** There are so many challenges literally from one end to the other. There's also opportunity with *Safe Routes to the Slough*.
- **Funding Strategy + Shovel Readiness.** Work with us to identify future funding and get ready to compete for it.
- **Railroads.** Please remember the 40 Mile Loop if a major railroad ever wants or needs anything from the City. We have a very long list of needs that go the other way.



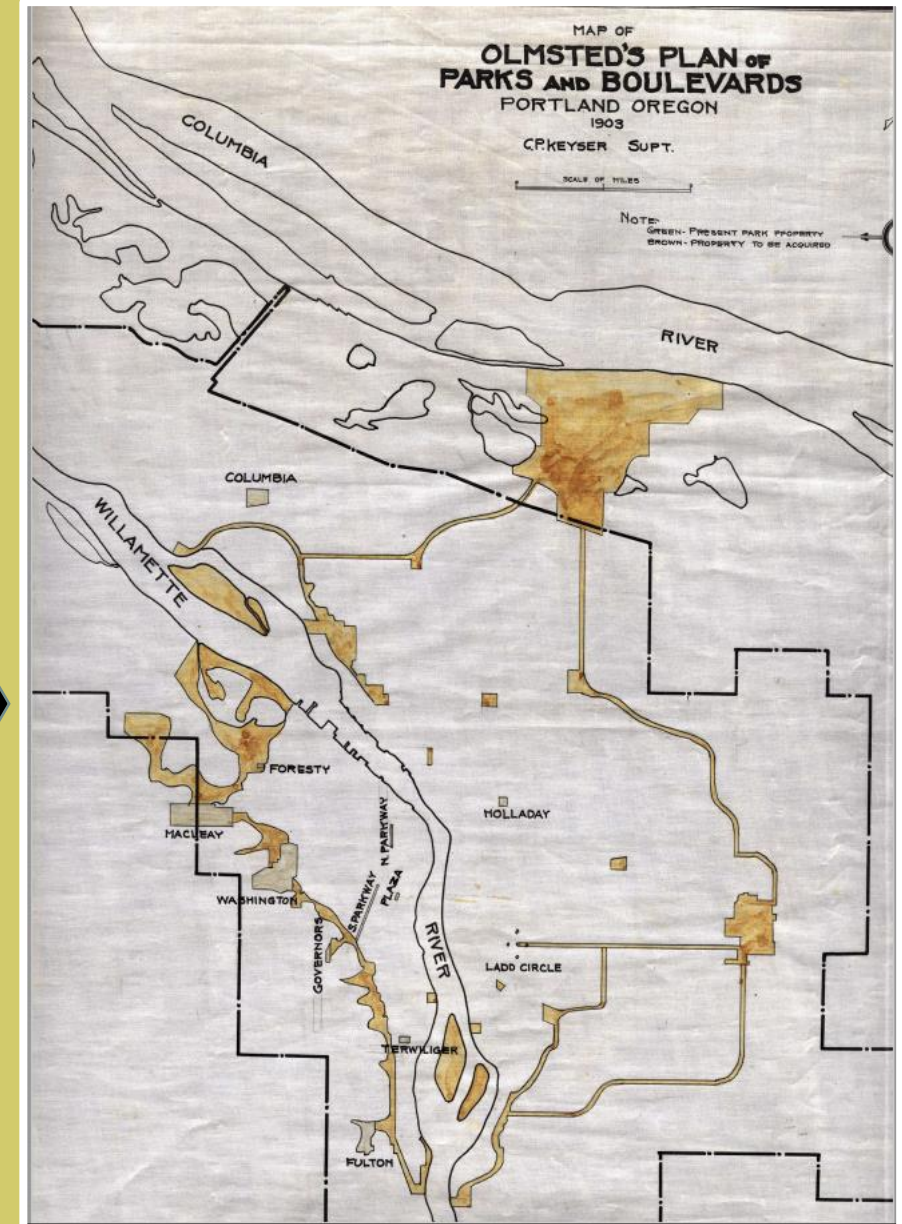


## The Olmsted Report

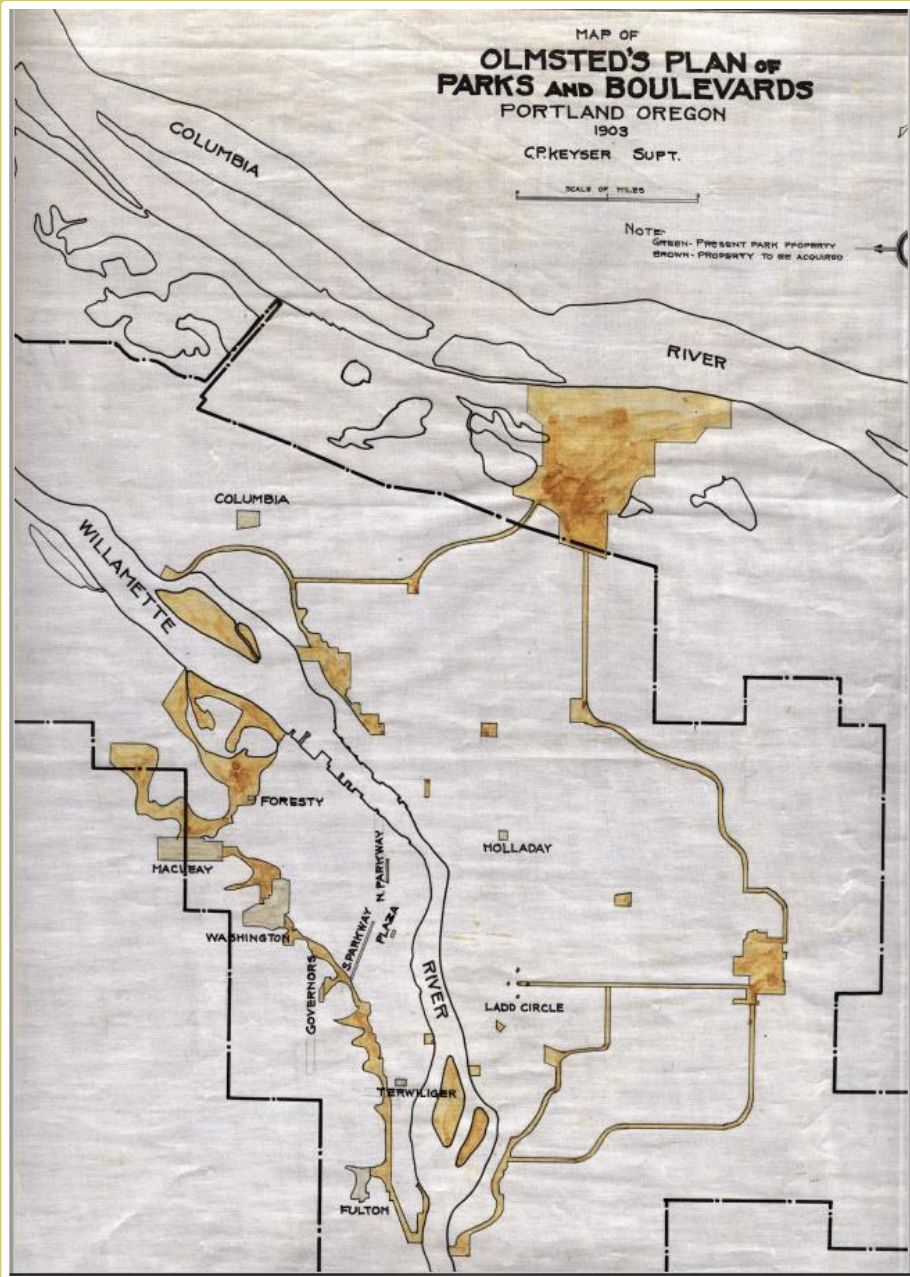
In 1903-04 this first comprehensive vision for parks in Portland called for system of parks connected by boulevards and parkways.

Years later, this interpretation of the Olmsted vision was developed by Portland Parks Superintendent C. P. Keyser (1919-1949).

It clearly shows a system of boulevards connecting parks, forming a great loop around the City of Portland, as had been described by Olmsted.







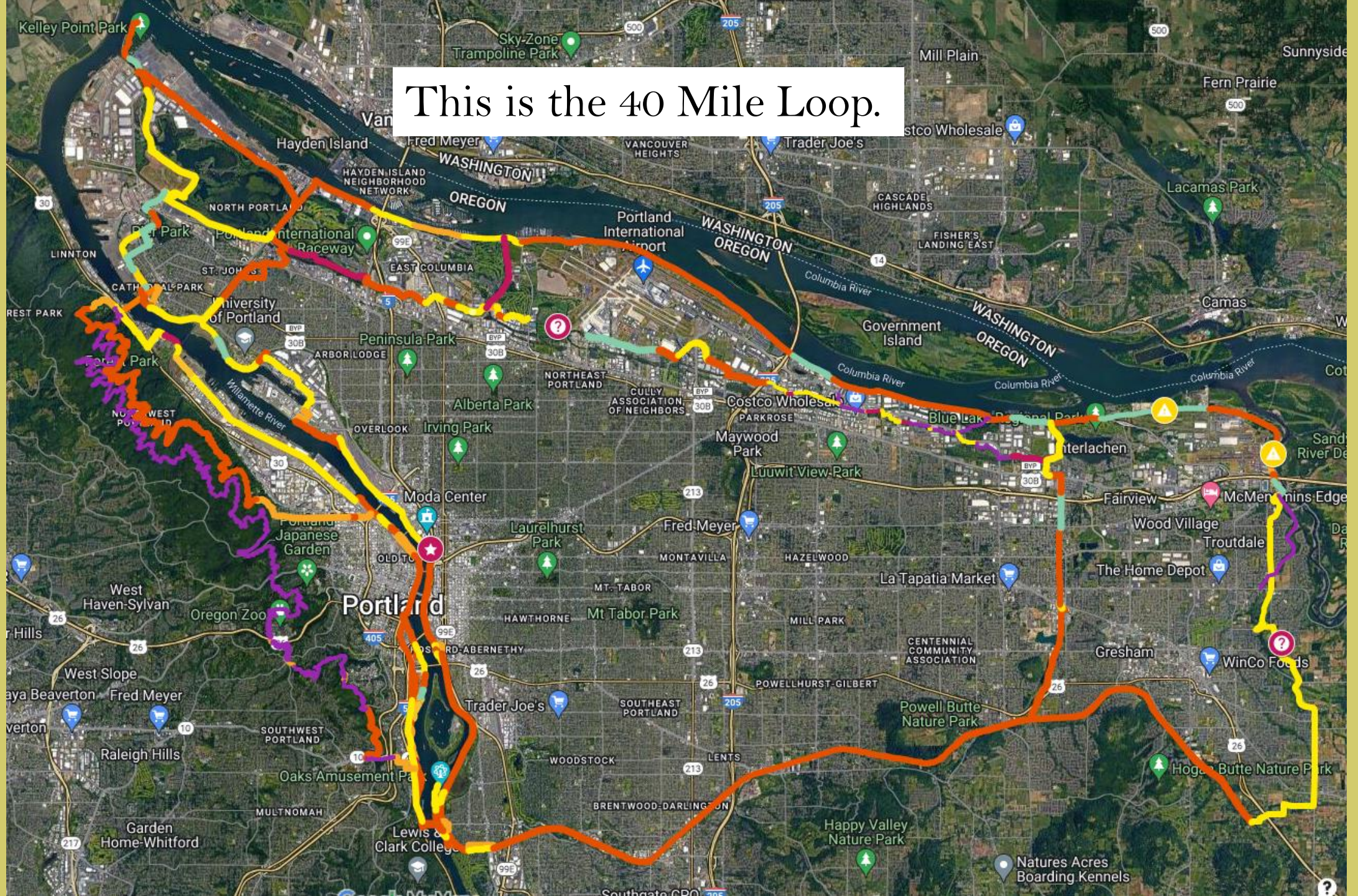
(op i som' e ter)

The Olmsted Report and the Keyser maps reemerged in the 1970's. When Keyser's park and parkway system was measured with an opisometer, the result was about 40 miles.

Hence, the name **40 Mile Loop** came into being.



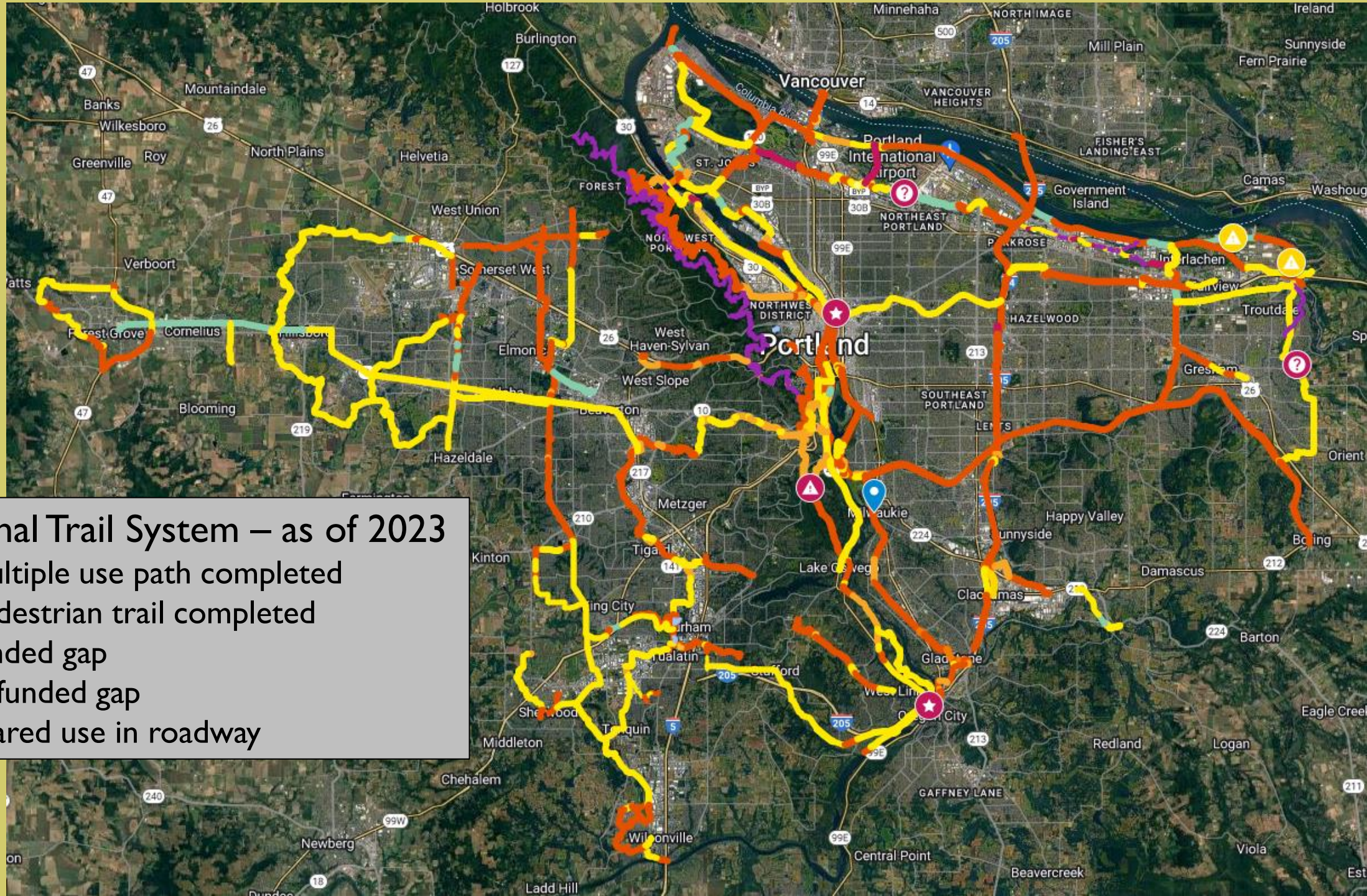
This is the 40 Mile Loop.



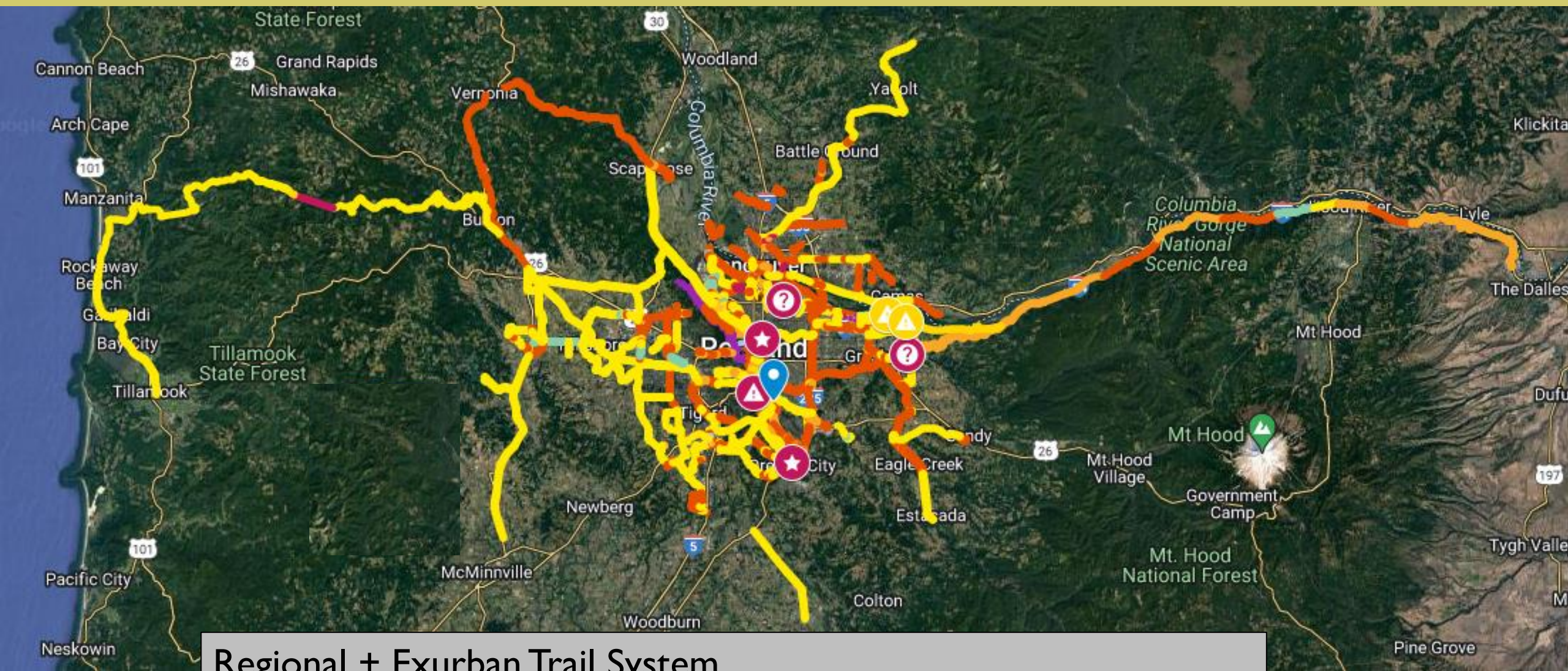


## Regional Trail System – as of 2023

- multiple use path completed
- pedestrian trail completed
- funded gap
- unfunded gap
- shared use in roadway







## Regional + Exurban Trail System

Includes **Vancouver & Clark County Trails**, the **Salmonberry Trail** to Tillamook, the **Historic Columbia River Highway State Trail**, the **Yamhelis Westsider Trail** to McMinnville, and other foreseeable future trails