



## Community Involvement Committee Meeting Minutes November 4, 2009

**Committee Members Present:** Paula Amato, Judy BlueHorse Skelton, Liz Gatti, Anyeley Hallova, Brian Heron, Shirley Nacoste, Linda Nettekoven, Stanley Penkin, Ryan Schera, Howard Shapiro, Peter Stark, Alison Stoll

**Absent:** Judith Gonzalez Plascencia, Jason Long, Lai-Lani Ovalles, Rahul Rastogi, Angie Thompson

**Staff (BPS):** Tom Armstrong, Kristin Belz, Emerald Bogue (Mayor's Ofc.), Eden Dabbs, Eric Engstrom, Joan Frederiksen, Heidi Guenin, Kate McQuillian, Marty Stockton, Matt Wickstrom,

**Visitors:** David Brandt (ONI), Kathy Fong Stephens (Barney & Worth), Clark Worth (Barney & Worth)

---

### Welcome – Howard Shapiro, *Chair*

Howard asked the visiting guests at the meeting to introduce themselves. Howard also welcomed Peter Stark to the committee.

### Announcements and Updates – Howard Shapiro

There are many planning projects in the pipeline that affect the Portland Plan. Brownbag presentations will be held on these projects to bring people up to speed, but there are also links to information on these projects in an email sent by Marty. Please submit brownbag presentation requests also to Marty.

### Executive Subcommittee Report – Howard Shapiro

Howard pointed out that the bylaws have provisions for absences. He asked that the members make a personal and emotional commitment to the committee and to please show up to the meetings. At the last meeting, not enough members attended to have a quorum, so there was some question as to whether or not the vote to approve the bylaws was valid. Howard asked if the committee could vote again today to approve the bylaws. Stan Penkin made a motion to approve the bylaws. A majority of members voted to approve the bylaws. The meeting minutes from the last meeting were corrected and approved. It was noted that "sit-in's" were welcome to attend meetings, but were not allowed to participate.

A conversation ensued on the naming convention of the Portland Plan and how the plan's scope should be explained. It was suggested that it should be called the Portland Strategic Plan. Staff noted how the scope of the Portland Plan has changed from being a concept plan intended solely for directing the new Comprehensive Plan, to a strategic plan that can set direction for the entire City and not just BPS and the City's land use policies. While this strategic plan will still help guide the Comprehensive Plan, the Portland Plan name has been used so as not to confuse it with all the other specific plans out there.

Marty noted that she was working to get a consistent meeting time for the CIC Committee. The group agreed that the third Wednesday of each month at 8-10 am would work. It was suggested that a Survey Monkey be repeated to see what time works for the members that were not present at the

meeting today. An evening time, starting at 6 or 6:30 pm, could also be considered. The committee will tentatively plan to meet at the agreed upon time until feedback is received from absent members.

### **Portland Plan Community Workshop Dry Run – Eric Engstrom and Tom Armstrong**

Marty noted that an evaluation sheet has been provided for committee members so that they can both provide staff with feedback on the presentation and so that the presentation can be completed with only minor interruptions.

Lisa Libby informed the committee that the Mayor will be attending all the workshops.

On Friday, November 20<sup>th</sup>, at 10 am there will be a debriefing on the first two workshops. CIC members are welcome and encouraged to attend. Even if unable to attend, staff would welcome comments and feedback by email.

A Facebook page has been created and is up and running at [www.facebook.com/pdxplan](http://www.facebook.com/pdxplan). Works is still being done on a new website, but look for it soon at [www.pdxplan.com](http://www.pdxplan.com).

Eric noted that the rhythm of the presentation is still being discussed and staff would appreciate feedback on whether the polling should occur after or before a discussion of the issues.

During the presentation, the following comments were made:

- Sometimes the numbers being read were also displayed in the presentation and sometimes they were not. I like to see the comments as you're talking about them.
- For green jobs, the number of jobs does not mean much. I would rather see it as a percentage of the total jobs within the City.
- For the amount Portland spends on the Arts, it might be more useful to show us compared to cities of similar size such as Austin.
- The presentation relies too much on numbers and jargon. Many people won't know what per capita means and people won't recognize that the picture of the solar cell is representative of our green economy.
- The Horace Mann quote was not particularly engaging.
- The term, "benchmark", can be confusing. Maybe the word, "goals", would work better.
- The presentation had too much emphasis on numbers and didn't seem engaging.
- During the polling, it should be explained that we are only trying to gauge people's gut reaction on their top priorities.
- It is helpful to read the number that corresponds with the polling answers.
- It might be helpful to ask, "What does equity mean to you?" at the first workshop to judge the public's perception of this concept.
- At the tree canopy slide, it may be helpful to explain why the City has a goal to increase the tree canopy.
- Some of the numbers, such as the percentage of people who feel safe walking in Portland at night and the percentage of people who live within a ½ mile of a grocery store, might be more effective if stated inversely. Such as the percentage of people

who don't feel safe walking in Portland at night and the percentage of people who don't live within a ½ mile of a grocery store.

- The slide on fossil fuels should have a negative image of fossil fuels to match with the negative connotation of the text on the slide.
- In the question on factors of choosing where to live, attractiveness of neighborhood does not seem to fit in with the question or the other responses.
- It should be explained how the walkability score is calculated.
- It was asked if staff would tie-in the results of these polls with the various plans that will address these questions.
- Before asking the question about the most important issue in Portland, tell participants that the same question will be asked about the most important issue in 25 years.
- It should be clarified the question is asking about the most important issue within the next 25 years or after 25 years from now.
- It was noted that choosing one answer was often difficult. This could make the results less useful as a general consensus of the participants. Staff responded that multiple formats of the survey will be distributed and participants will have more opportunity to explain their responses in other formats.

In response to feedback on the issue of having the discussion before or after the polling questions, the group generally felt it was better to have the discussion after the questions and that this might prevent any bias in the responses. But there should be some discussion or explanation of the questions so that they are interpreted consistently.

Finally, Howard noted that the content of the presentation should be explained at the beginning so that everyone will know why they are there and what they are trying to accomplish.

### **Next Step(s)**

A reminder that CIC members are encouraged to attend the workshops as evaluators, as well as participants. Also, CIC members are encouraged to attend a debriefing of the first two workshops on Friday, November 20, 10 a.m. in Conference Room 7a, or submit their feedback to Marty Stockton at [marty.stockton@ci.portland.or.us](mailto:marty.stockton@ci.portland.or.us). The next CIC meeting is as follows:

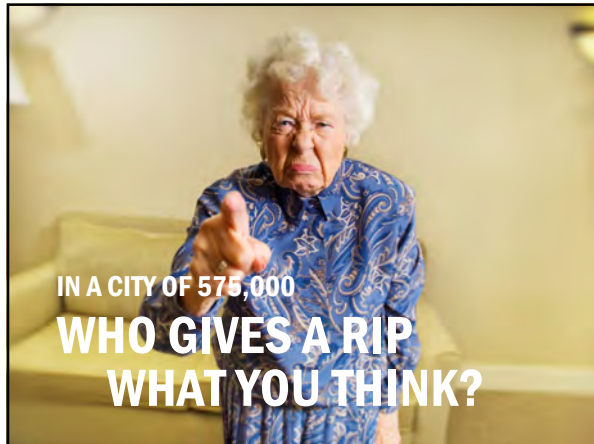
- **Meet as full committee on Wednesday, December 16, 8:00-10:00 a.m., Rm. 7A (7<sup>th</sup> Floor, 1900 Bldg.)**

Meeting adjourned.

### **Attachments**

The following documents should be considered part of the minutes for this meeting:

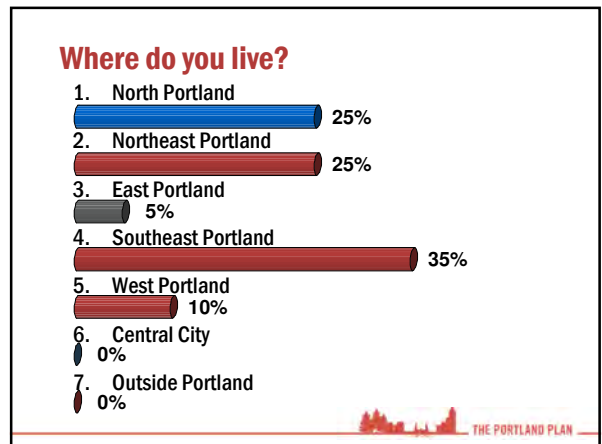
Workshop Power Point Presentation  
27 Things You Need to Know About Portland  
Round 1 Workshop (Nov/Dec 2009) Format  
Coordination List  
Projects Underway



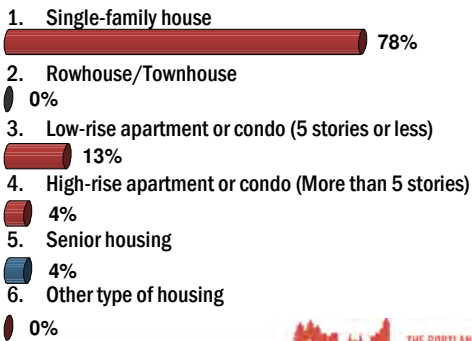
**THE PORTLAND PLAN  
WILL BE OUR STRATEGIC PLAN  
FOR THE NEXT 25 YEARS**

City of Portland | Metro | Multnomah County  
Portland State University  
Portland Public Schools | Parkrose School District  
Centennial School District | David Douglas School District  
Reynolds School District | Oregon Health & Science University  
Portland Community College | TriMet  
Portland Development Commission | Housing Authority of Portland  
East Multnomah Soil & Water Conservation District  
West Multnomah Soil & Water Conservation District

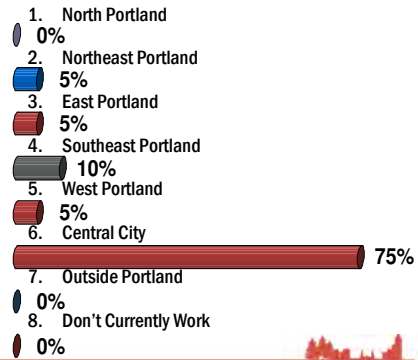
THE PORTLAND PLAN



### Where do you live?



### Where do you work?



### How old will you be in 2035?

1. Less than 18 years old
2. 18-34 years old
3. 35-64 years old
4. 65+ years old
5. I hope am here in 2035.



#### SUCCESS

Portland continues to capture a large share of the region's new housing



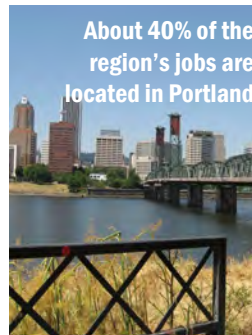
#### CHALLENGE

A median-priced home is out of reach of those earning the area's median income

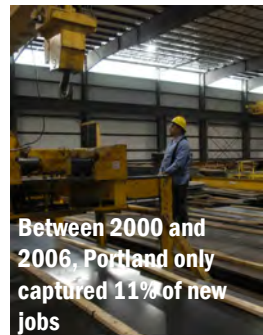


#### SUCCESS

About 40% of the region's jobs are located in Portland



#### CHALLENGE



Between 2000 and 2006, Portland only captured 11% of new jobs

SUCCESS	CHALLENGE
 <p>Water quality in the Willamette River is improving</p>	 <p>But the contaminated sediment in the Portland Harbor is a Superfund cleanup site</p>
 THE PORTLAND PLAN	

SUCCESS	CHALLENGE
 <p>Portland has reduced greenhouse gas emissions 1% below 1990 levels</p>	 <p>However, current practices and policies will not meet our reduction goals.</p>
 THE PORTLAND PLAN	

SUCCESS	CHALLENGE
 <p>We have a world-class transit system</p>	 <p>We do not have the funds to maintain or replace all of our aging infrastructure</p>
 THE PORTLAND PLAN	



**HALF OF PORTLANDERS WHO LIVE HERE TODAY WERE NOT HERE IN 1980**



THEN & NOW

 THE PORTLAND PLAN

**WE HAVE ADDED MORE THAN ONE-THIRD OF OUR LAND AREA SINCE 1980**



 THE PORTLAND PLAN

## WE'VE MADE CHOICES BEFORE



Work as if you were living in  
the early days of  
a better nation.

Alasdair Gray

## INCORPORATING PORTLANDERS' VALUES...

equity and access

environmental,  
economic and social sustainability

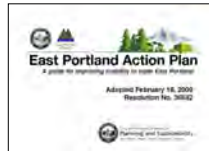
community connectedness and  
distinctiveness



WE WOULD LIKE TO BE...  
A THRIVING AND SUSTAINABLE CITY  
...NOW AND IN THE FUTURE



*prosperous, healthy, rich in opportunity*



## TODAY'S MEETING FORMAT

- 1) FACTS ABOUT PORTLAND
- 2) GROUP DISCUSSION
- 3) POLLING QUESTIONS



## NINE ACTION AREAS



- prosperity & business success
- sustainability & the natural environment
- design, planning & public spaces
- neighborhoods & housing
- transportation, technology & access
- education & skill development
- human health, food & public safety
- quality of life, civic engagement & equity
- arts, culture & innovation

## GROUP 1



**prosperity & business success**



**education & skill development**

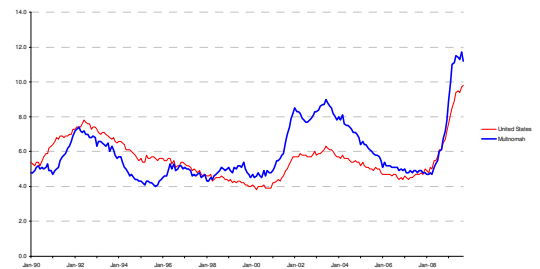


**arts, culture & innovation**



**PROSPERITY and BUSINESS SUCCESS**

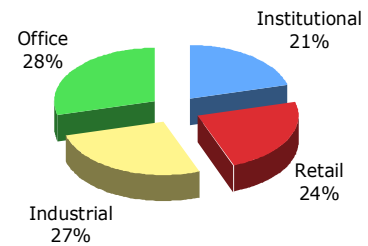
## THE UNEMPLOYMENT RATE IS TOO HIGH



**THE REGIONAL ECONOMY IS GROWING, BUT PORTLAND'S SHARE OF JOB GROWTH IS LAGGING**



## PORTLAND'S EMPLOYMENT





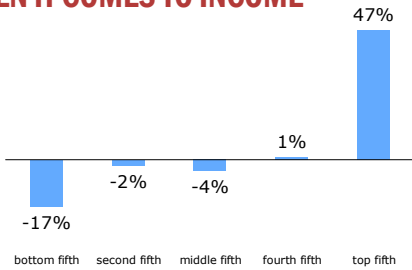
**41% OF PORTLANDERS LIVE WITHIN A HALF MILE OF A NEIGHBORHOOD COMMERCIAL DISTRICT**



**PORTLAND HAS 19,000 JOBS IN CLEAN TECH AND SUSTAINABLE INDUSTRIES**



**EQUITY: MOST HOUSEHOLDS ARE LOSING GROUND WHEN IT COMES TO INCOME**



**EDUCATION and SKILL DEVELOPMENT**

**ONLY 63% OF OUR HIGH SCHOOL STUDENTS GRADUATE ON TIME**



**80% OF PORTLAND'S SCHOOL BUILDINGS WERE BUILT BEFORE 1960**



## 39% OF PORTLAND'S WORKFORCE HAS A BACHELOR'S DEGREE OR HIGHER



## ARTS, CULTURE and INNOVATION

## PORTLAND'S PER CAPITA ART SPENDING IS LOW



## THE ARTS EMPLOY MORE THAN 18,000 PEOPLE IN THE METRO REGION

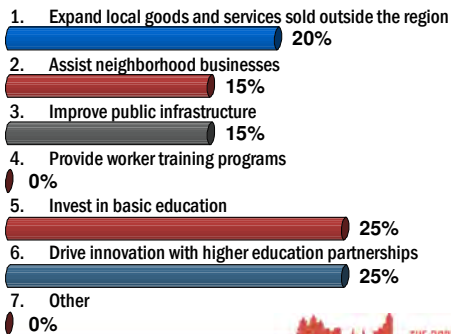


## WE LOVE OUR LIBRARIES

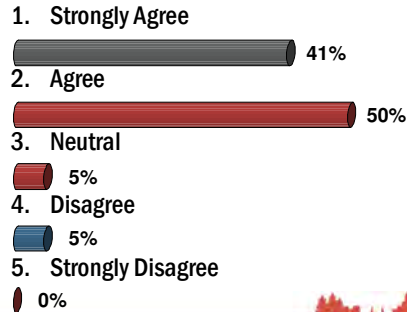


## DISCUSSION

### What should Portland's priority be for creating jobs over the next 25 years?



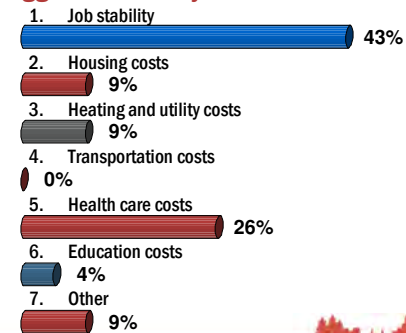
### Portland should invest public funds to achieve long-range job growth.



### What should Portland's priority be to improve neighborhood business districts?



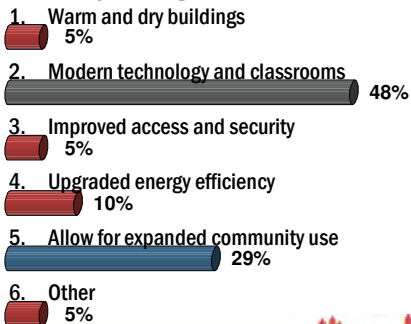
### Over the next 25 years, what do you see as the biggest threat to your household budget?



### What is the most important action Portland can take to improve high school graduation rates?



### Many schools will need to be renovated or rebuilt. What does your neighborhood school need the most?



### What is your most important arts and culture need?

1. More space to practice and perform  
0%
2. More activities for children  
5%
3. More public art and activities in my neighborhood  
65%
4. More places for exhibitions and performances  
5%
5. More world-class events  
20%
6. Other  
5%



THE PORTLAND PLAN

### GROUP 2



sustainability & the natural environment



human health, food & public safety



quality of life, civic engagement & equity



THE PORTLAND PLAN

### SUSTAINABILITY and the ENVIRONMENT

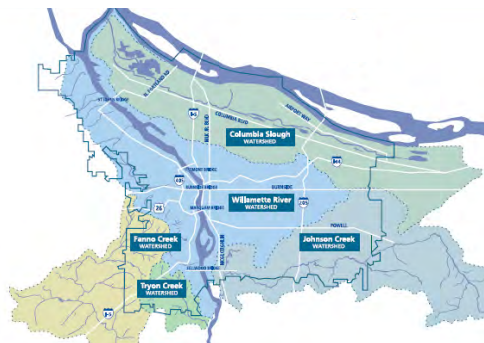


### PORTLAND HAS ALMOST 27,000 ACRES OF ENVIRONMENTALLY SENSITIVE NATURAL AREAS



THE PORTLAND PLAN

### PORTLAND'S WATERSHEDS



THE PORTLAND PLAN



22% OF PORTLAND IS WITHIN 300 FEET OF A RIVER OR STREAM

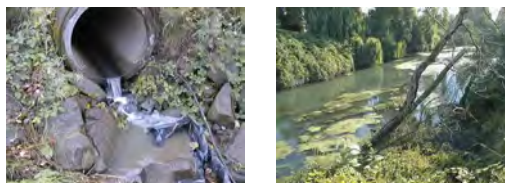


THE PORTLAND PLAN

**THE WILLAMETTE IS GETTING CLEANER,  
BUT IT'S NOT AS CLEAN AS IT SHOULD BE**



**WATER QUALITY IN MANY OF PORTLAND'S  
URBAN STREAMS IS EITHER  
POOR OR VERY POOR**



**26% OF THE CITY IS UNDER TREE CANOPY**



**ALMOST 70% OF PORTLAND'S ELECTRICITY  
COMES FROM FOSSIL FUELS**



**HUMAN HEALTH, FOOD  
and PUBLIC SAFETY**



**LIFE EXPECTANCY IS LOWER**

	Average	Males	Females
Multnomah Co	77.3	75.0	79.5
Oregon	78.1	75.8	80.4
Vancouver, BC	81.1	79.2	85.2

**MORE THAN 50%  
OF MULTNOMAH  
COUNTY ADULTS  
ARE OVERWEIGHT  
OR OBESE**



**THE PORTLAND PLAN**

**76% OF PORTLANDERS LIVE WITHIN  
A HALF MILE OF A PARK OR NATURAL AREA**



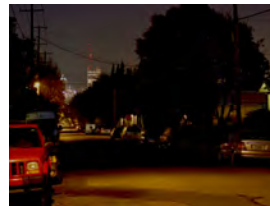
**THE PORTLAND PLAN**

**60% OF PORTLANDERS LIVE WITHIN  
A HALF MILE OF A FULL SERVICE  
GROCERY STORE**



**THE PORTLAND PLAN**

**NOT EVERYONE FEELS SAFE WALKING  
ALONE IN PORTLAND AT NIGHT**



**THE PORTLAND PLAN**

**QUALITY OF LIFE, CIVIC ENGAGEMENT  
and EQUITY**



**WE VOLUNTEER**



**THE PORTLAND PLAN**

## WE VOTE



## DISCUSSION

### What one aspect of Portland's natural areas do you care about most?

1. Access to nature 48%
2. Attractiveness of neighborhood 5%
3. Flood and landslide protection 0%
4. Healthy watersheds: rivers, streams and habitat 48%
5. Other 0%

### What should be local government's primary role in protecting the environment?

1. Acquire and restore natural areas 24%
2. Regulate to protect streams and trees 33%
3. Help people to restore their own land 14%
4. Educate about the value of natural resources 29%
5. Other 0%

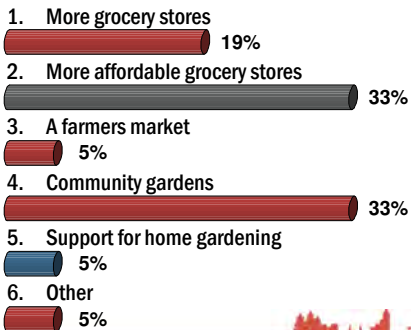
### What is one new thing you are most willing to do to help combat climate change?

1. Buy "green power" from utilities or install solar panels 11%
2. Weatherize and improve home energy efficiency 33%
3. Walk, bike and take transit for more daily trips 17%
4. Eat more home grown fruits and vegetables 11%
5. Use long-lasting goods rather than disposable ones 17%
6. Other 11%

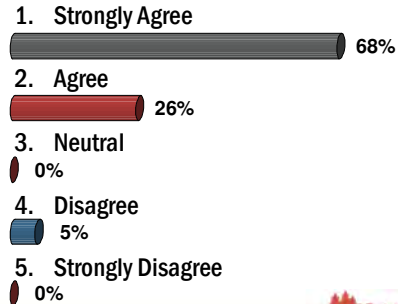
### What part of Portland's park system do you value most?

1. Natural areas 15%
2. Playing fields, courts and pools 10%
3. Playgrounds 0%
4. Trails and greenways 50%
5. Community centers, programs and classes 15%
6. Plazas 10%
7. Other 0%

**What does your community need most to increase access to healthy food?**



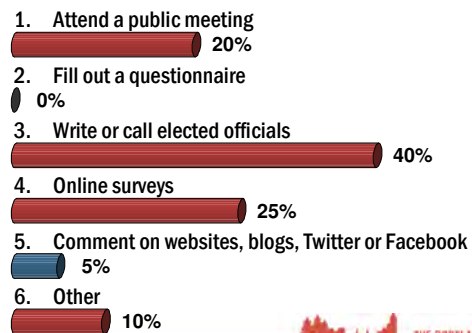
**Local governments should factor in health impacts when making investment decisions.**



**With which of these community groups are you most involved?**



**What is your most preferred way to comment on public issues?**



**GROUP 3**



**design, planning & public spaces**



**neighborhoods & housing**



**transportation, technology & access**



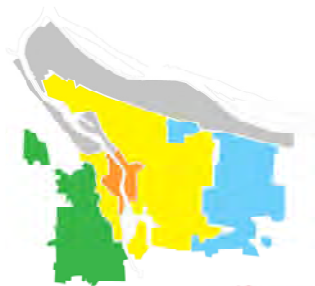
**DESIGN, PLANNING and PUBLIC SPACES**



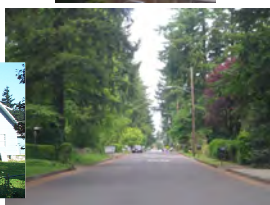
## PORTLAND IS A WALKABLE CITY, BUT NOT EVERYWHERE



## PORTLAND HAS (AT LEAST) FIVE DISTINCT NEIGHBORHOOD PATTERNS



## EASTERN NEIGHBORHOODS



## INNER NEIGHBORHOODS



## WESTERN NEIGHBORHOODS



## INDUSTRIAL DISTRICTS



## CENTRAL CITY

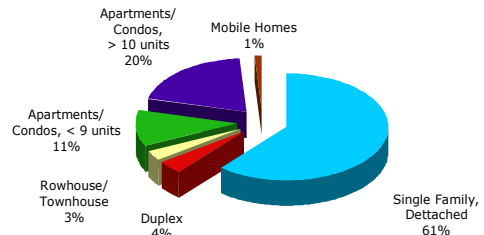


## NEIGHBORHOODS AND HOUSING

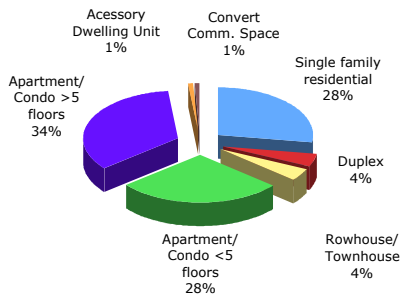
## THE NUMBER OF ONE-PERSON HOUSEHOLDS IS RISING



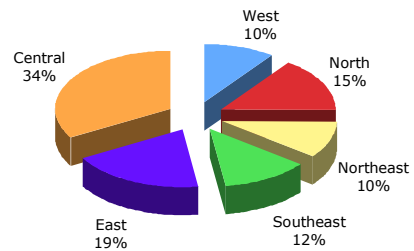
## OUR EXISTING HOUSING STOCK



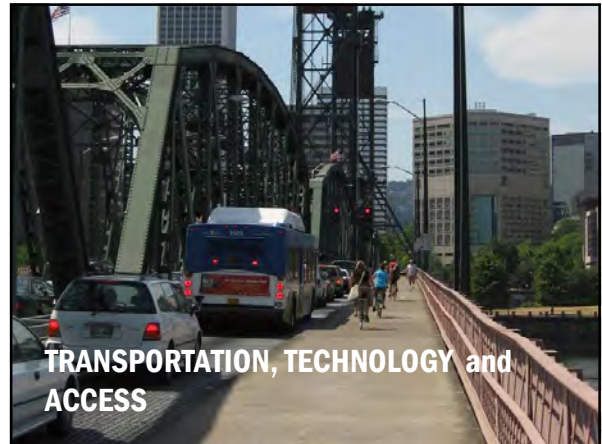
## 18,000 NEW DWELLINGS WERE BUILT IN THE LAST FIVE YEARS



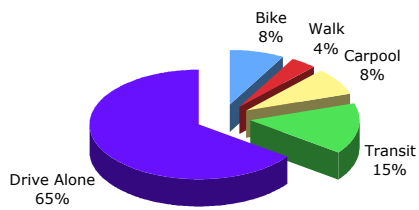
## SOME PARTS OF PORTLAND HAVE SEEN MORE DEVELOPMENT THAN OTHERS



## WE SPEND 49% OF OUR INCOME ON THE COMBINED COSTS OF HOUSING AND TRANSPORTATION



## HOW WE GET TO WORK



## MORE PORTLANDERS ARE GOING BY BIKE OR TRANSIT



## PORTLANDERS DRIVE ABOUT 20 MILES A DAY



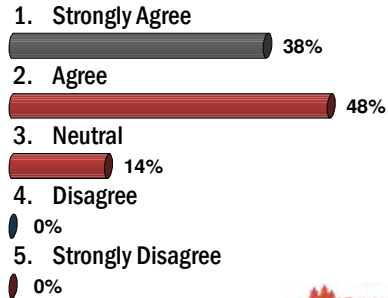
## MANY OF US HAVE INTERNET ACCESS, BUT NOT EVERYONE



## DISCUSSION



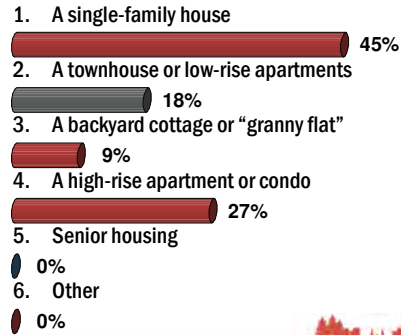
### All neighborhoods should have a range of housing choices – types, sizes and affordability.



### In deciding where to live during the next 25 years, which factor is most important to you?



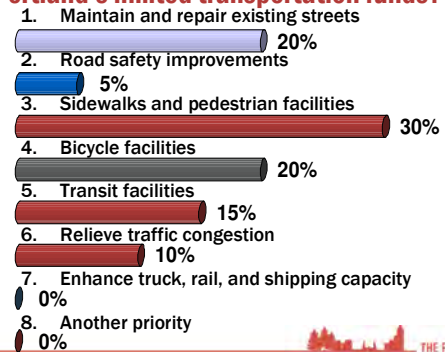
### Where do you think you will be living in 25 years?

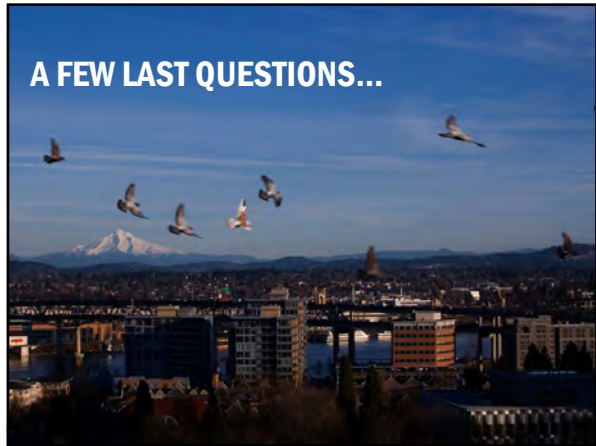


### Other than changing your commute, what would make it easier to meet your daily needs without having to drive?



### What is your top spending priority for Portland's limited transportation funds?





## Today, what is the most important issue facing Portland?

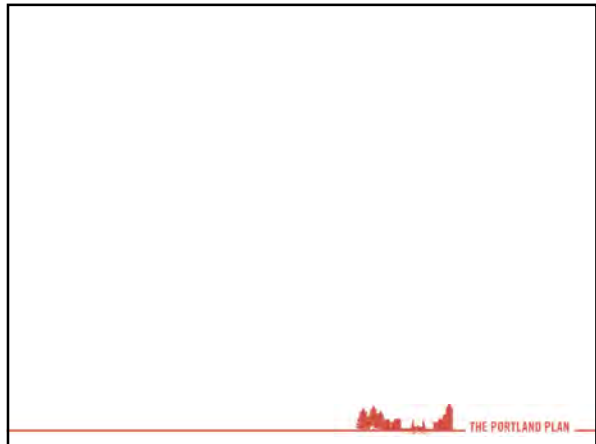
1. Prosperity and Business Success
2. Education and Skill Development
3. Arts, Culture and Innovation
4. Sustainability and the Environment
5. Human Health, Food and Nutrition
6. Quality of Life, Civic Engagement
7. Design, Planning and Urban Form
8. Neighborhoods and Housing
9. Transportation, Technology and Innovation

Issue	Percentage
1. Prosperity and Business Success	36%
2. Education and Skill Development	23%
3. Arts, Culture and Innovation	0%
4. Sustainability and the Environment	14%
5. Human Health, Food and Nutrition	9%
6. Quality of Life, Civic Engagement	18%
7. Design, Planning and Urban Form	0%
8. Neighborhoods and Housing	0%
9. Transportation, Technology and Innovation	0%

## Over the next 25 years, what will be the most important issue facing Portland?

1. Prosperity and Business Success
2. Education and Skill Development
3. Arts, Culture and Innovation
4. Sustainability and the Environment
5. Human Health, Food and Nutrition
6. Quality of Life, Civic Engagement
7. Design, Planning and Urban Form
8. Neighborhoods and Housing
9. Transportation, Technology and Innovation

Issue	Percentage
1. Prosperity and Business Success	15%
2. Education and Skill Development	20%
3. Arts, Culture and Innovation	0%
4. Sustainability and the Environment	45%
5. Human Health, Food and Nutrition	0%
6. Quality of Life, Civic Engagement	15%
7. Design, Planning and Urban Form	0%
8. Neighborhoods and Housing	0%
9. Transportation, Technology and Innovation	5%

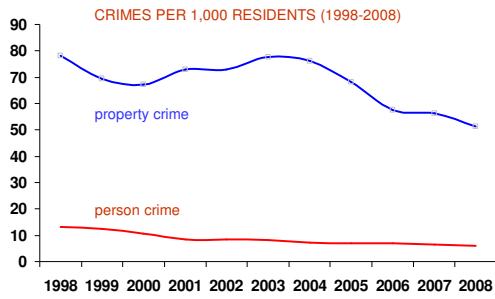


**“A DIFFERENT WORLD CANNOT BE BUILT BY INDIFFERENT PEOPLE.”**

**-HORACE MANN**

THE PORTLAND PLAN

## CRIME RATES HAVE BEEN FALLING



THE PORTLAND PLAN

## PORTLANDERS SUFFER FROM DANGEROUSLY HIGH LEVELS OF BENZENE IN OUR AIR



THE PORTLAND PLAN

## HALF OF PORTLANDERS WHO LIVE HERE TODAY WERE NOT HERE IN 1980



THE PORTLAND PLAN

# PORTLAND PLAN

## 27 THINGS YOU NEED TO KNOW ABOUT PORTLAND

### Prosperity & Business Success

1. **Unemployment Rate:** In September 2009, Multnomah County's unemployment rate topped 11.2%.
2. **Job Growth:** While the regional economy continued to grow, the growth of new jobs in Portland was lagging. Between 1980 and 2000, Portland captured 27% of new regional jobs, but between 2000 and 2006, Portland captured only 11% of new regional jobs.
3. **Neighborhood Business District Access:** 41% of Portland households live within a half mile of a neighborhood business district. Neighborhood businesses provide jobs and offer residents needed goods and services within walking distance of where they live.

### Education & Skill Development

4. **High School Graduation Rate:** Only 63% of our students graduate on time.
5. **Adult Education Attainment:** 39% of Portlanders (age 25 and older) have at least a bachelor's degree.
6. **Agging Schools:** 80% of Portland school buildings were built before 1960. Only six out of 137 schools have been built since 1980.

### Arts, Culture & Innovation

7. **Arts Funding:** The Portland region spends \$2.47 per capita on the arts. For comparison, Seattle spends more than \$7.50 per capita.
8. **Library Circulation:** Multnomah County Library ranks first in annual circulation of books and other materials among U.S. libraries serving fewer than 1 million residents.

### Sustainability & the Natural Environment

9. **Natural Areas and Watersheds:** Portland has 26,825 acres of environmentally sensitive natural areas – about 31% of the land area of Portland. Currently, about one-third of these areas are not protected.
10. **Water Quality:** While the Willamette River's water quality is rated "fair" to "good," the water quality of Portland's major streams that flow into the Willamette is either "poor" or "very poor."
11. **Tree Canopy:** Portland's tree canopy covers 26% of the city, which helps preserve watershed health and reduce runoff while improving the livability of our neighborhoods.
12. **Energy Use:** 69% of Portland's electricity comes from fossil fuels such as coal and natural gas.

### Human Health, Food & Public Safety

13. **Life Expectancy:** A newborn infant in Multnomah County is expected to live an average of 77.3 years, which is less than the statewide average of 78.1 years.
14. **Obesity:** 53% of Multnomah County's adults and 10% of its youth are overweight or obese. An additional 10-15% of youth are at risk of becoming obese or overweight.

## Human Health, Food & Public Safety

15. **Access to Parks:** Approximately 76% of Portland's population lives within a half mile of a park or natural area.
16. **Access to Healthy Food:** Only 60% of Portlanders are within a half mile of a full-service grocery store.
17. **Sense of Safety:** Only 31% of Portlanders said they feel safe walking alone downtown at night. 59% feel safe walking alone in their neighborhood at night.
18. **Crime Rate:** Since 1998, Portland's per capita crime rate has decreased by 55% for person crimes and 34% for property crimes.

## Quality of Life, Civic Engagement & Equity

19. **Volunteerism:** Of the 51 largest cities in the country, the Portland metro area ranks second in its rate of volunteerism. Nearly 39% of Portland adults participated in a volunteer activity and contributed more 75 million hours of service in 2008.
20. **Voter Turnout:** In Multnomah County, 86% of registered voters participated in the 2008 General Election.

## Design, Planning & Public Spaces

21. **Walkability:** Portland's citywide walkscore is 66 out of a possible 100. Some neighborhoods, like Irvington (83), have very high walkscores, while other neighborhoods like Bridlemile (46), have lower walkscores. ([www.walkscore.com](http://www.walkscore.com))
22. **Community Character:** Portland has five major neighborhood types, each with a distinct character: 1) Central City; 2) Western Neighborhoods; 3) Inner Neighborhoods; 4) Eastern Neighborhoods; and 5) Industrial Districts.

## Neighborhoods & Housing

23. **Neighborhood Affordability - Combined Housing and Transportation Costs:** On average Portlanders spend about 49% of their income on housing and transportation, while lower income families spend as much as 79%.
24. **Range of Housing Options:** Between 2004 and 2008, 62% of new housing units in Portland were apartments or condos. However, single family homes still make up 61% of the total housing stock in Portland.

## Transportation, Technology & Access

25. **How Portlanders Get To Work:**
  - 65% of Portlanders drive alone to work
  - 15% take transit
  - 8% bike
  - 8% carpool
  - 4% walk
26. **Vehicle Use:** Portlanders travel an average of 16 miles per day by car, which is less than the national average of 23 miles per day.
27. **Internet Access:** As of 2007, about 72% of Oregon individuals over age three were living in households with Internet access, placing Oregon 13<sup>th</sup> out of the 50 states.





## Portland Plan Round 1 Workshops (Nov/Dec 2009)

**Purpose:** Build a shared understanding of what will be accomplished through the Portland Plan and how.

Share what we have learned from the background reports.

Start the community discussion about the challenges we face.

**Approach:** Present an overview of the facts and issues that is complemented by the workbook.

Hold small group discussions on the Action Areas. Discussions will be grouped so that we can cover nine topics in three rounds of discussions. Each topic group will include a presentation of facts, a facilitated discussion, and will conclude with electronic polling on specific questions related to the topics. Everyone gets a chance to make their point and listen to their neighbors before answering polling questions. A discussion guide that includes a summary fact sheet and the polling questions will be provided to participants.

	<b>Introduction</b>
10min	Welcome and initial polling question (Who is here tonight?) to orient attendees, introduce them to the electronic polling process and make sure the key pads are working; workshop agenda
10min	Issue Corral – Mayor gathers initial comments, issues and questions (Why are you here tonight?)
5min	Introductory presentation on the Portland Plan process and products
5min	<b>Storyline: Vision/Values/Challenges</b>
	<b>Action Areas: Things You Need To Know About Portland</b>
30min	Group 1 – Prosperity & Business Success; Education & Skill Development; Arts, Culture and Innovation
	6min Presentation: Define/Conditions/Trends
	20min Discussion – Define Issues <ul style="list-style-type: none"> <li>• Do any of these things surprise you?</li> <li>• Have any of these things affected your life? Your family? Your community?</li> </ul>
	4min Polling – Set Direction <ul style="list-style-type: none"> <li>• Individual/Personal Choices</li> <li>• Community Needs</li> <li>• City of Portland Actions</li> </ul>
30min	Group 2 – Sustainability & the Natural Environment; Human Health, Food & Public Safety; Quality of Life, Civic Engagement & Equity
30min	Group 3 – Design, Planning & Public Spaces; Neighborhoods & Housing; Transportation, Technology & Access
5min	<b>Most Important Issue Polling</b> <ul style="list-style-type: none"> <li>• What is the most important issue?</li> <li>• What is the second most important issue?</li> </ul>
5min	<b>Wrap-Up and Next Steps</b>
2hr10min	

## Workshop Schedule

November 17 6:30-9pm (3 <sup>rd</sup> Tues)	NE	<b>Beaumont Middle School Cafeteria</b> 4043 NE Fremont St Portland, OR 97212-1999
November 19 6:30-9pm (3 <sup>rd</sup> Thurs)	East	<b>David Douglas High School Cafeteria (North)</b> 1001 SE 135th Ave Portland, OR 97233-1924
December 1 6:30-9pm (1 <sup>st</sup> Tues)	North	<b>St. Johns Community Center Auditorium</b> 8427 N Central St Portland, OR 97203-3704
December 3 8-9:30am (1 <sup>st</sup> Thur)	Downtown	<b>World Trade Center</b>
December 5 10am -1pm (1 <sup>st</sup> Sat)	SE	<b>Mt. Scott Community Center Auditorium</b> 5530 SE 72nd Ave Portland, OR 97255
December 7 6:30-9pm (1 <sup>st</sup> Mon)	SW	<b>Wilson High School Cafeteria</b> 1151 SW Vermont St Portland, OR 97219-2199
December 15 6:30-9pm (3 <sup>rd</sup> Tues)	Central	<b>University of Oregon Old Town: Event Room (rooms 142 &amp; 144)</b>

The Portland Plan will coordinate with several agencies and jurisdictions, including the State, Metro, Multnomah County, school districts and others. Heightened coordination is required between the City of Portland and its planning partners as both Metro and the State update their plans.

Ongoing citywide planning efforts will also be considered, including:

	Project Description	Key Decision Dates	Public Involvement Forum
Climate Action Plan	40-year roadmap for institutional and individual change needed to reach ambitious climate protection goals in Portland and Multnomah County	Draft plan delivered to City Council for consideration in late October 2009	Climate Action Plan Steering Committee
<a href="#">The City's new Economic Development Strategy</a>	This program of the Bureau of Planning and Sustainability conducts research, analyzes data, fosters community collaboration, and administers legislative projects that support the city's business and industrial districts and long-range economic development goals.	None scheduled	None
<a href="#">The River Plan</a>	A comprehensive update of Portland's Willamette Greenway Plan, code, and design guidelines to reflect the River Renaissance Vision and Strategy.	North Reach briefing for Planning Commission on October 13, 2009 (tentative). North Reach hearing on November 18, 2009 (tentative)	River Plan Committee and other task groups
<a href="#">Citywide Tree Project</a>	A multi-bureau effort to clarify, simplify and provide a consistent and effective regulatory framework for trees in the City of Portland.	Planning Commission briefing on November 24, 2009 (tentative). Planning Commission hearing on December 8, 2009 (tentative)	Stakeholder Discussion Group
<a href="#">Streetcar System Plan</a>	A big picture look at the City of Portland's transportation network and how the streetcar can fit into the future system.	Public hearings process completed on September 9, 2009	Public involvement process has ended
Bicycle Master Plan	The draft Portland Bicycle Plan for 2030 provides a blueprint for making Portland a world-class bicycling city and functions as an update to the original Bicycle Master Plan adopted in 1996.	Planning Commission hearing on October 27, 2009. City Council hearing on December 2, 2009 (tentative)	Bicycle Advisory Committee

Ongoing regional or state planning efforts will also be considered, including:

	Project Description	Key Decision Dates	Public Involvement Forum
Metro's 2040 Plan Update (Making the Greatest Place)	Updates to the 2040 Growth Concept including the Regional Transportation Plan, the urban and rural reserves designations and development of an urban growth report	Metro Council will hold public hearings and make decisions in Fall 2009 and throughout 2010	Metro Policy Advisory Committee
State Big Look Task Force	Task force charged with studying and making recommendations on Oregon's land use planning program, respective roles and responsibilities of state and local governments in land use planning and land use issues specific to areas inside and outside urban growth boundaries	The latest version of the Big Look bill passed the Oregon House of Representatives and the Oregon Senate Environment and Natural Resources Committee	Public involvement process has ended

**Projects Underway  
November, 2009**

<b>Project name</b>	<b>Description</b>	<b>Planning Commission dates</b>	<b>City Council dates</b>	<b>Public involvement forum</b>
Airport Futures	Long-range development plan for Portland International Airport	Adoption of PDX Master Plan and City Land Use Plan November 2009-April 2010		Planning Advisory Group
Barbur Boulevard High Capacity Transit Corridor	Analysis of high capacity transit options for Barbur Boulevard corridor	Not scheduled		
Bicycle Master Plan	2030 blueprint to improve Portland's bicycle network	Planning Commission hearing on Tuesday, October 27, 2009	December 2, 2009 (tentative)	Bicycle Advisory Committee
City-wide Tree Project	A multi-bureau effort to clarify, simplify and provide a consistent and effective regulatory framework for trees	November 24, 2009 briefing; December 8, 2009 hearing (both tentative)		Stakeholder Discussion Group
Climate Action Plan	40-year roadmap for institutional and individual change needed to reach ambitious climate protection goals in Portland and Multnomah County	Adopted by City Council in October 2009		Climate Action Plan Steering Committee
Columbia Crossing	Bridge, transit and highway improvement project between Portland and Vancouver	Not scheduled		Community and Environmental Justice Group
Creative Advocacy Network: Act for Art	Provides an overview of several strategies to strengthen our cultural infrastructure, improve access to the arts and arts education, and invest in creative talent.			
Division Streetscape and Reconstruction	Streetscape and traffic improvements along SE Division between SE 6 <sup>th</sup> and SE 39 <sup>th</sup> with a focus on improving stormwater management	Funded project will not require approval through Planning Commission or City Council. Construction is expected to begin in January 2011.		Community Working Group

**Projects Underway  
November, 2009**

<b>Project name</b>	<b>Description</b>	<b>Planning Commission dates</b>	<b>City Council dates</b>	<b>Public involvement forum</b>
Eastside MAX station area plan	Land use, building design and transportation analysis and recommendations for stations along Eastside MAX	Not scheduled		
Future of Urban Renewal	PDC update to the urban renewal plans for many of the Urban Renewal Areas in the City including two new studies the North/Northeast Economic Development Initiative and the Central City Study	Winter 2009/Spring 2010 PDC Board, Planning Commission and City Council will be presented with Urban Renewal Amendments		Community Advisory Committee for North/Northeast Economic Development Initiative and Evaluation Committee for the Central City Study
Lake Oswego/Portland Streetcar	Analysis of a streetcar line linking Portland and Lake Oswego	Not scheduled		
Metro's 2040 Plan Update	Updates to the 2040 Growth Concept including the Regional Transportation Plan	Metro Council will hold public hearings and make decisions in Spring-Winter 2010.		Metro Policy Advisory Committee and Metro Committee for Citizen Involvement
Northwest high speed rail				
Portland Public Schools – Educational Facilities Long-Range Plan for Smart Sustainable Schools	Comprehensive plan to renovate and rebuild PPS's portfolio of more than 89 school facilities throughout the city.	PPS Board of Education will review the Draft Long-Range Plan including recommendations for Phase 1 in Spring 2010		Superintendent Advisory Committee; stakeholder group discussions; public workshops <a href="http://www.pps.k12.or.us/departments/schoolmodernization">www.pps.k12.or.us/departments/schoolmodernization</a>
Portland Public School – High School System Redesign	Major initiative to redesign PPS high school system to increase student engagement, achievement and graduation	PPS Board of Education to review High School Plan draft in Spring 2010		Stakeholder group discussions, public workshops <a href="http://www.pps.k12.or.us/departments/high-school-system/797.htm">www.pps.k12.or.us/departments/high-school-system/797.htm</a>

**Projects Underway  
November, 2009**

<b>Project name</b>	<b>Description</b>	<b>Planning Commission dates</b>	<b>City Council dates</b>	<b>Public involvement forum</b>
Portland to Milwaukie light rail	Planning and engineering for 7.3 mile Portland to Milwaukie light rail line	Record of decision expected 2010		Citizens Advisory Committee
Regulatory Improvement Project	Process which seeks to improve the City's development code regulations and procedures, lower costs, and enhance customer service	October 13, 2009	Not scheduled	Regulatory Improvement Stakeholder Advisory Team
River Plan	A multi-objective plan for the land along the Willamette River including an update to the Willamette Greenway Plan, zoning regulations and design guidelines	North Reach briefing November 24, 2009	North Reach hearing December 16, 2009	River Plan Committee and other task groups

**Projects Underway  
November, 2009**

Schools and Parks Conditional Use Code Project	Explore zoning code changes to address concerns about activities on school sites and in parks.	November 10, 2009 at 12:30 PM	Fall/Winter 2009 (pending Planning Commission approval)	
SE 122 <sup>nd</sup> Avenue Pilot Project	A Portland Plan pilot study exploring opportunities to create a healthy, sustainable, and viable "20-minute neighborhood" along SE 122nd Avenue.	Not scheduled		Community Working Group application deadline extended to October 15, 2009.
Sellwood Bridge	New bridge to replace current Sellwood Bridge	City of Portland Hearings Officer decision, appealable to City Council. Also requires approval through Multnomah County, Metro and other affected government agencies. No hearings scheduled at this time. Approval expected in 2009.		Community Task Force
Streetcar System Plan	Project to identify transit corridors in Portland with highest potential for streetcars	Completed	Scheduled for September 9, 2009 at 2:30 PM	System Advisory Committee
Washington High School Community Center	Parks and Recreation project for new community center at Washington High School site	Proposed design expected to be finalized in September 2009. Requires approval through City budget process.		Project Advisory Committee
West Hayden Island	A public process to evaluate alternative long-term uses for West Hayden Island	Planning & Sustainability will report to City Council the final study findings and concept plan alternatives		Community Working Group