



PORTLAND PARKS & RECREATIONSM

Healthy Parks, Healthy Portland

Mt. Scott Community Center Seismic Retrofit and Expansion

May 17, 2023

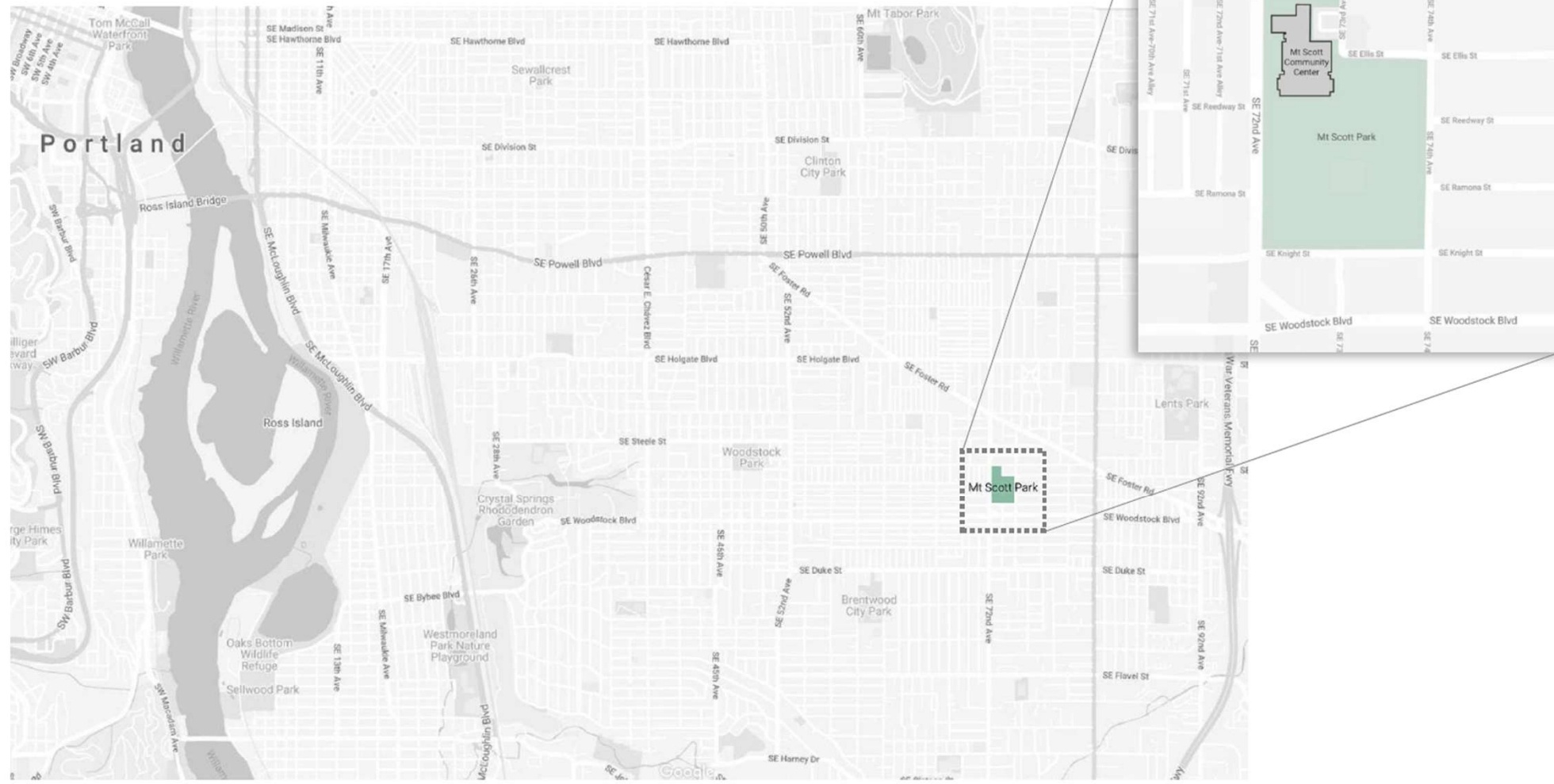
Robin Laughlin, Capital Renovation Program Manager



PORTLAND PARKS & RECREATION SM

Healthy Parks, Healthy Portland

Project Location

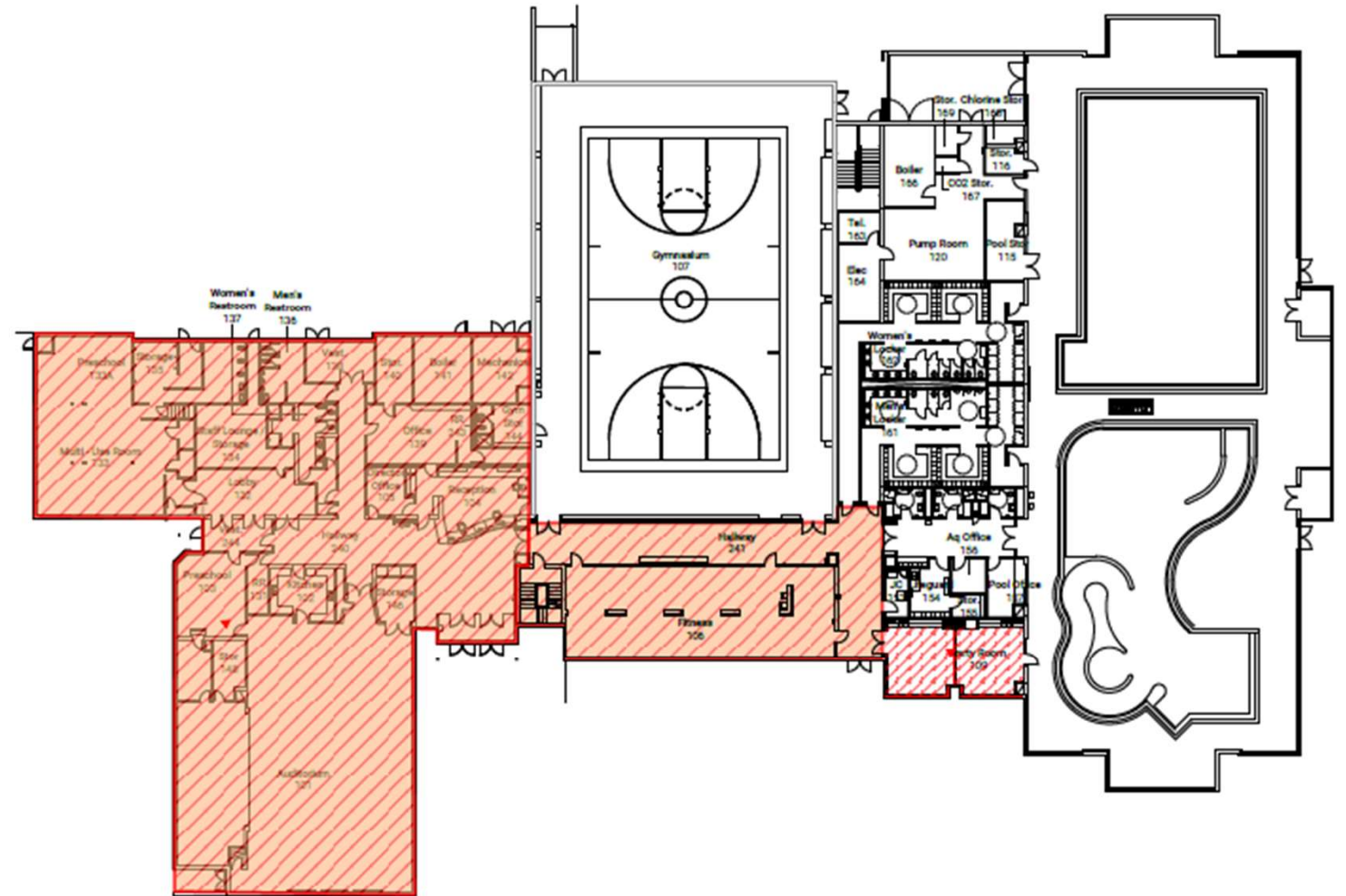




PORTLAND PARKS & RECREATIONSM

Healthy Parks, Healthy Portland

Background



DEMOLITION AREA

Background



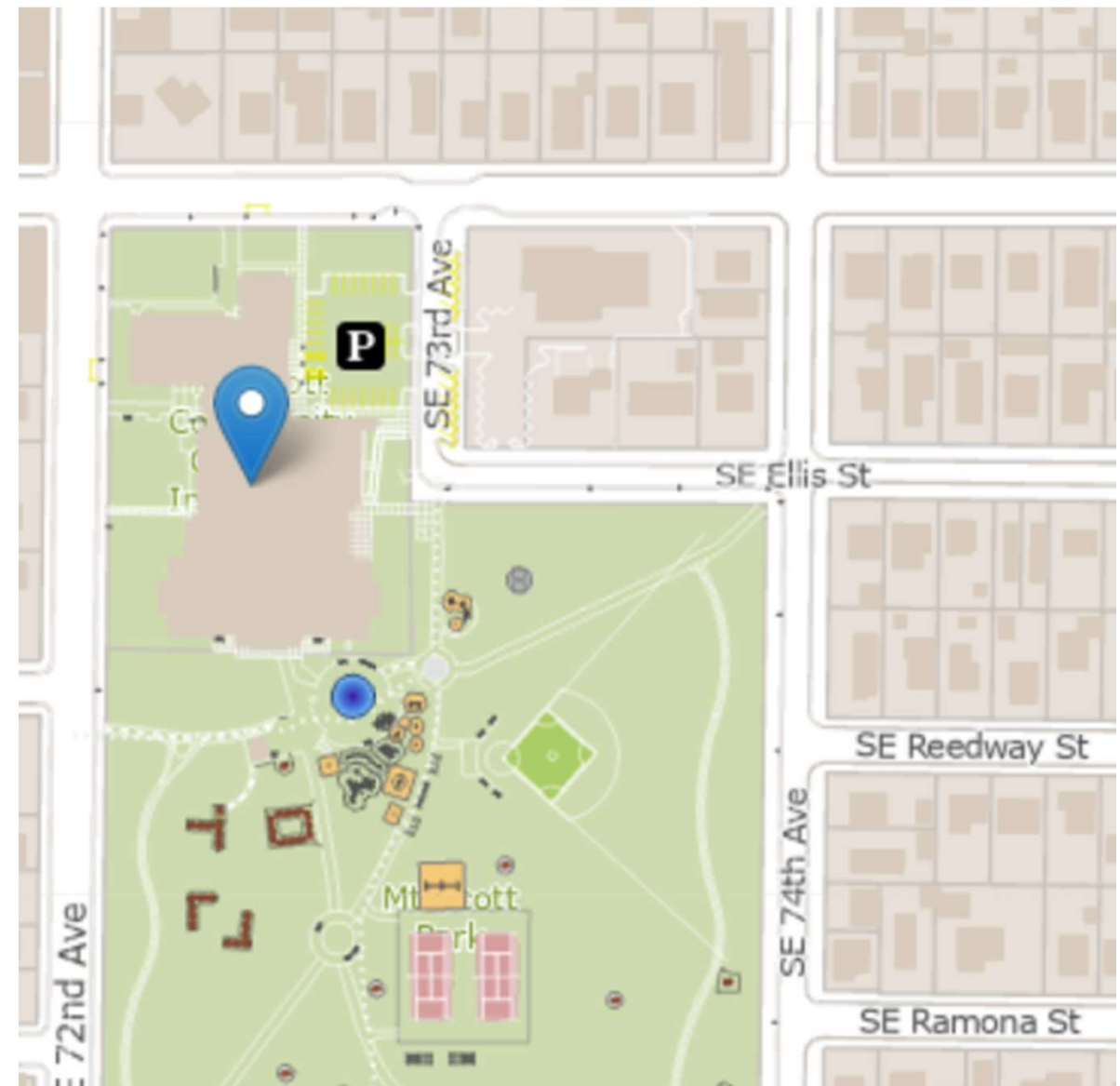


PORTLAND PARKS & RECREATIONSM

Healthy Parks, Healthy Portland

Project History and Public Process

- 2018 – Facility assessment begins
- 2020 - Project recommendations made
- July 2021 – Schematic Design begins
- October 2021 – On-line community survey influences design concepts
- September 2022 - Open House meeting and online survey
- School outreach
- Neighborhood Association presentations



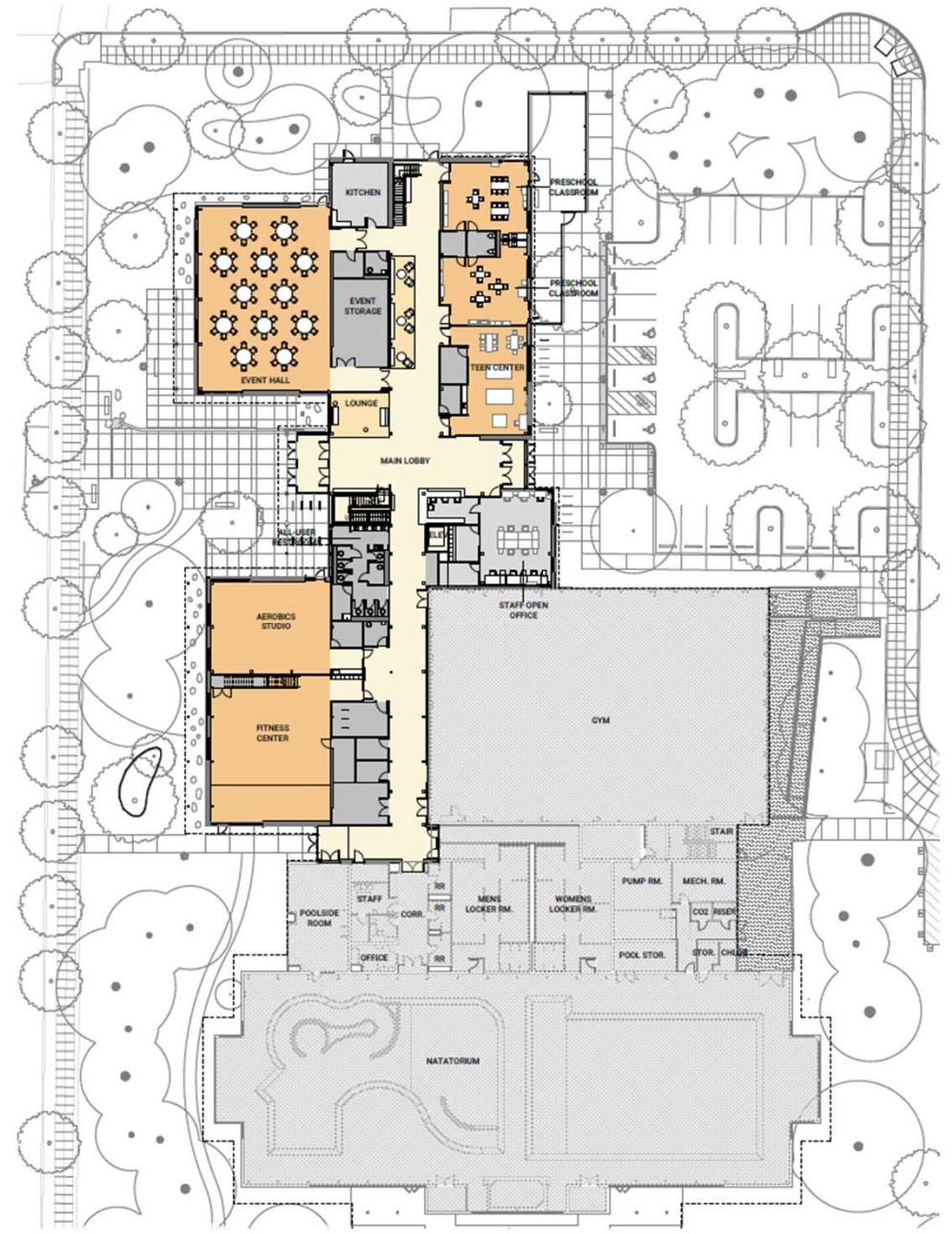


PORTLAND PARKS & RECREATIONSM

Healthy Parks, Healthy Portland

Proposed Improvements

- Demolition of portions of the facility
- 31,131 SF 2-story new construction
- New fitness rooms, rental and event space, classroom space, offices



Proposed Improvements

- Maintenance backlog
- Roofing, HVAC, roof, fire sprinklers
- Seismic upgrades
- Exterior improvements
- Shelter





Funding

- \$34,514,882 Total Funding
 - \$15,000,000 Build Portland Initiative
 - \$12,189,064 System Development Charge funds
 - \$245,700 Major Maintenance, General funds
 - \$7,000,000 Mayor's Livability Emergency funds
 - \$80,118 Capital Set-Aside funds





PORTLAND PARKS & RECREATION SM

Healthy Parks, Healthy Portland

Procurement Approach

- 2018 Project design begins
- Traditional Low-bid contracting was desired
- COBID outreach
- Participation reporting





PORTLAND PARKS & RECREATION

Healthy Parks, Healthy Portland

Requested Council Action:

- **Authorize competitive solicitation and contract with the lowest responsible bidder for construction of the Mt. Scott Community Center Seismic Retrofit and Expansion Project for an estimated cost of \$28,300,000 (Ordinance)*

