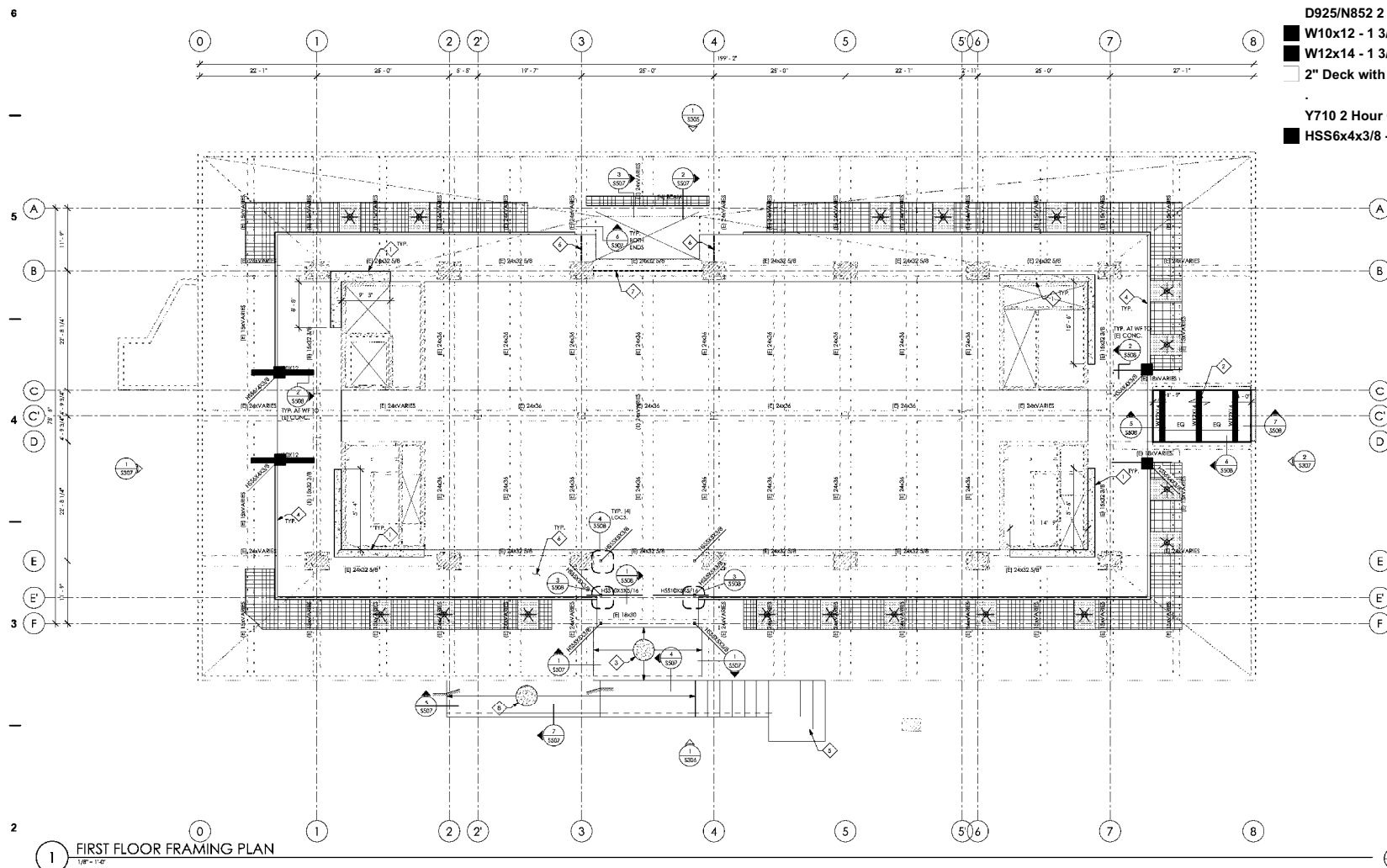
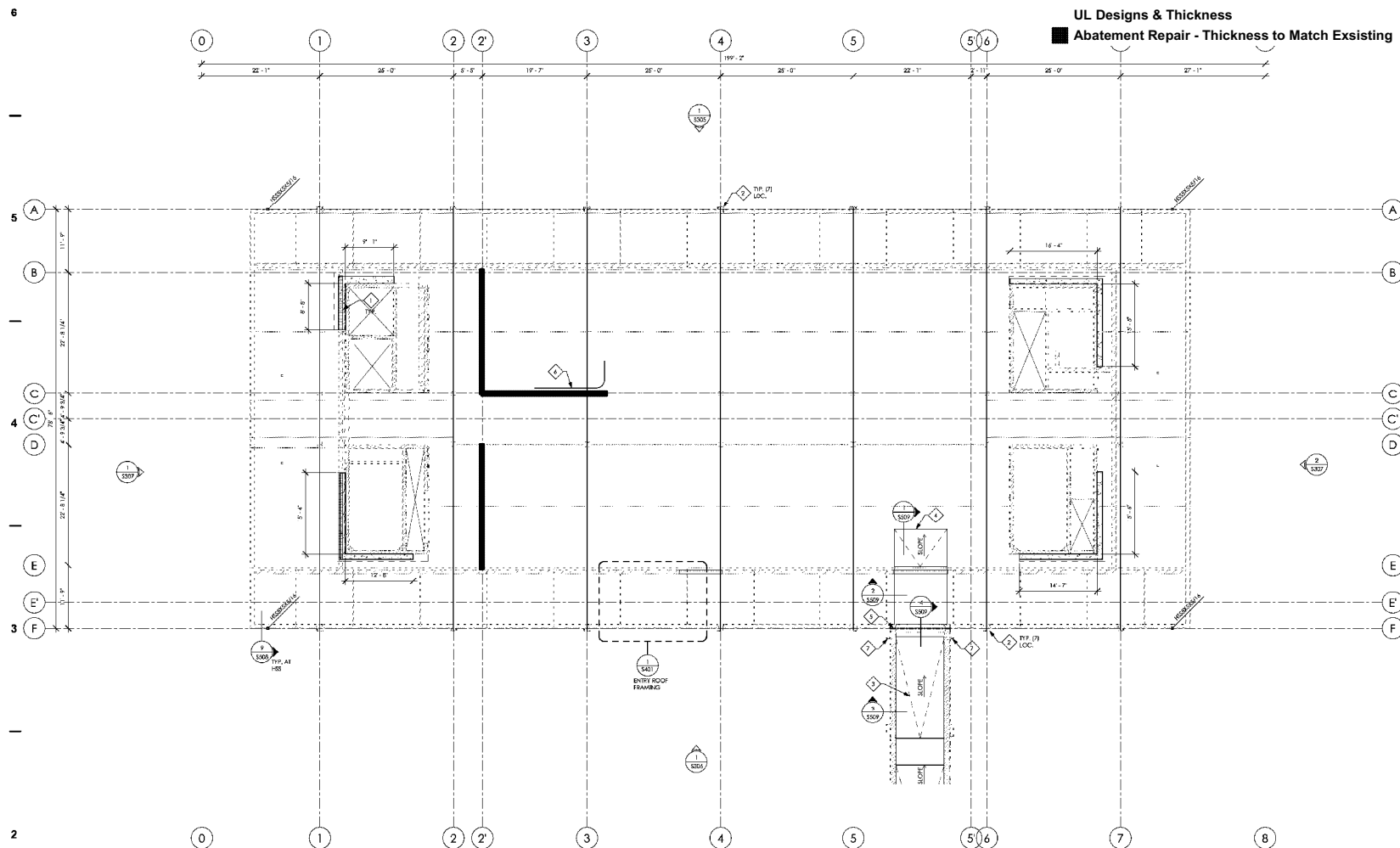


Project







1 SECOND FLOOR FRAMING PLAN  
1/8" = 1'-0"

BORA ARCHITECTS, INC.  
Reviewed for Conformance With  
Design Concept  
By:

*Lina Waven*  
06/09/2023

No Exceptions Taken  
Make Corrections Noted  
Nonconforming - Resubmit

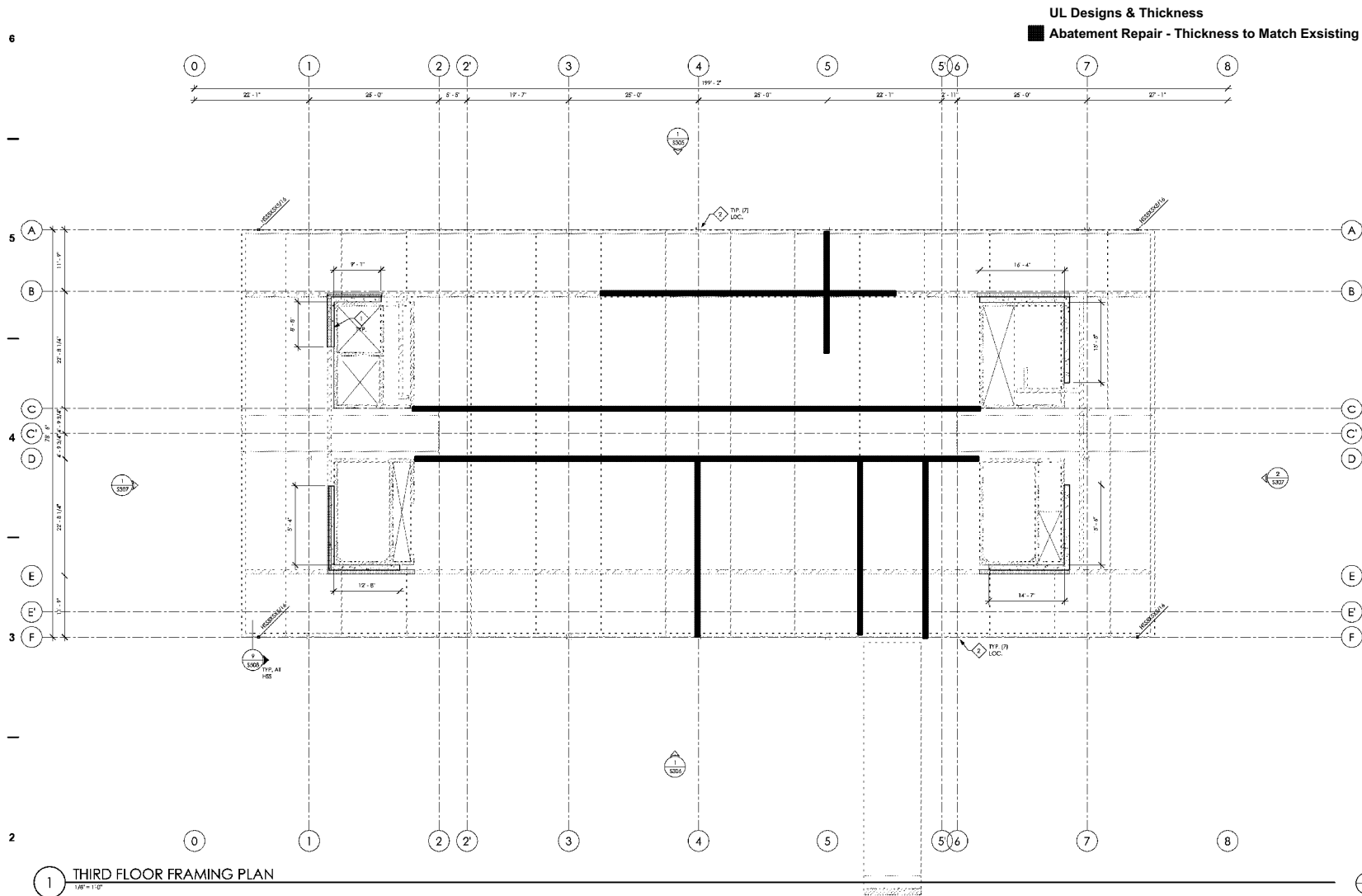


Phone: 503-226-1575

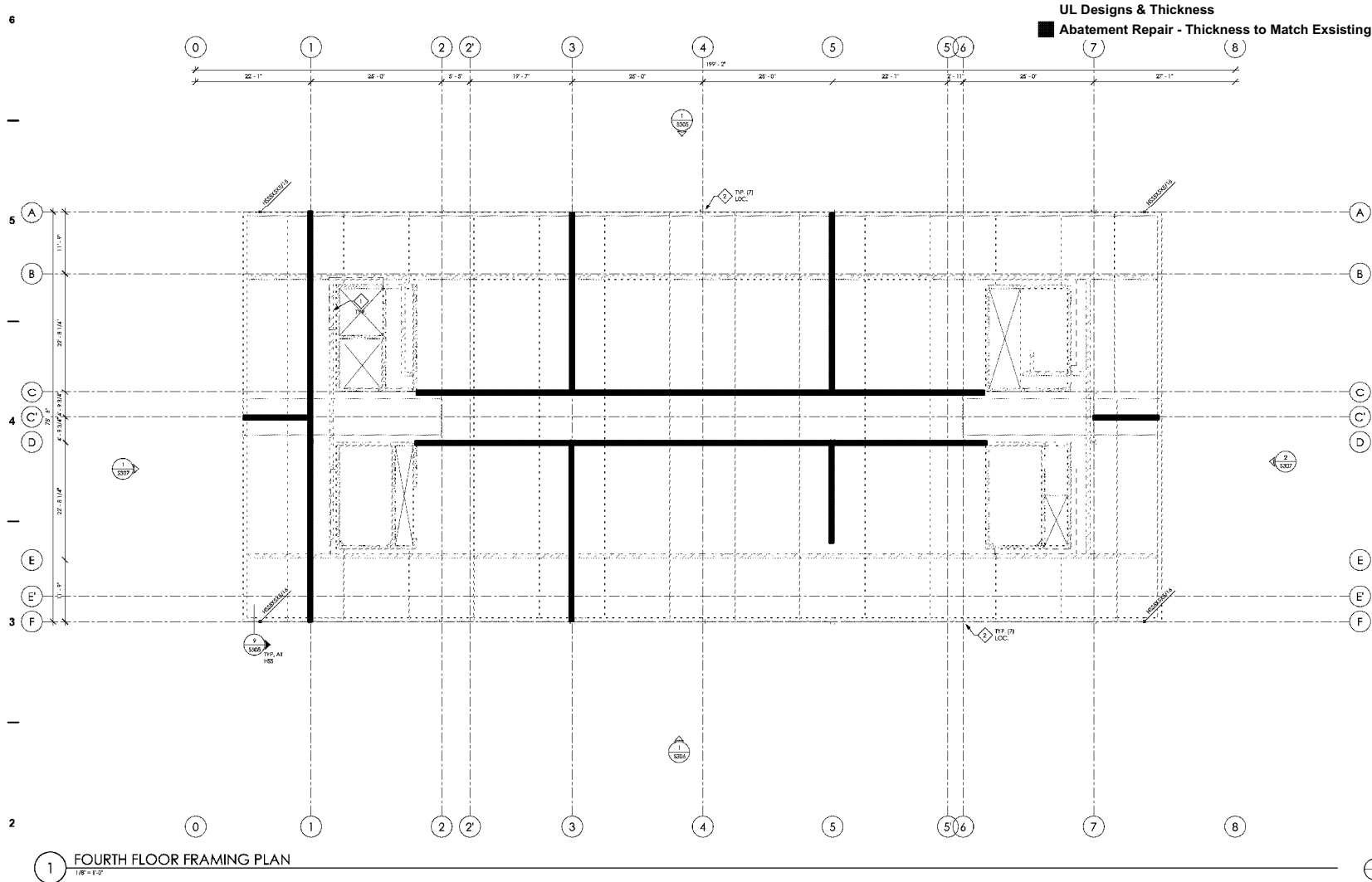
PERMIT SET

SECOND FLOOR  
FRAMING PLAN

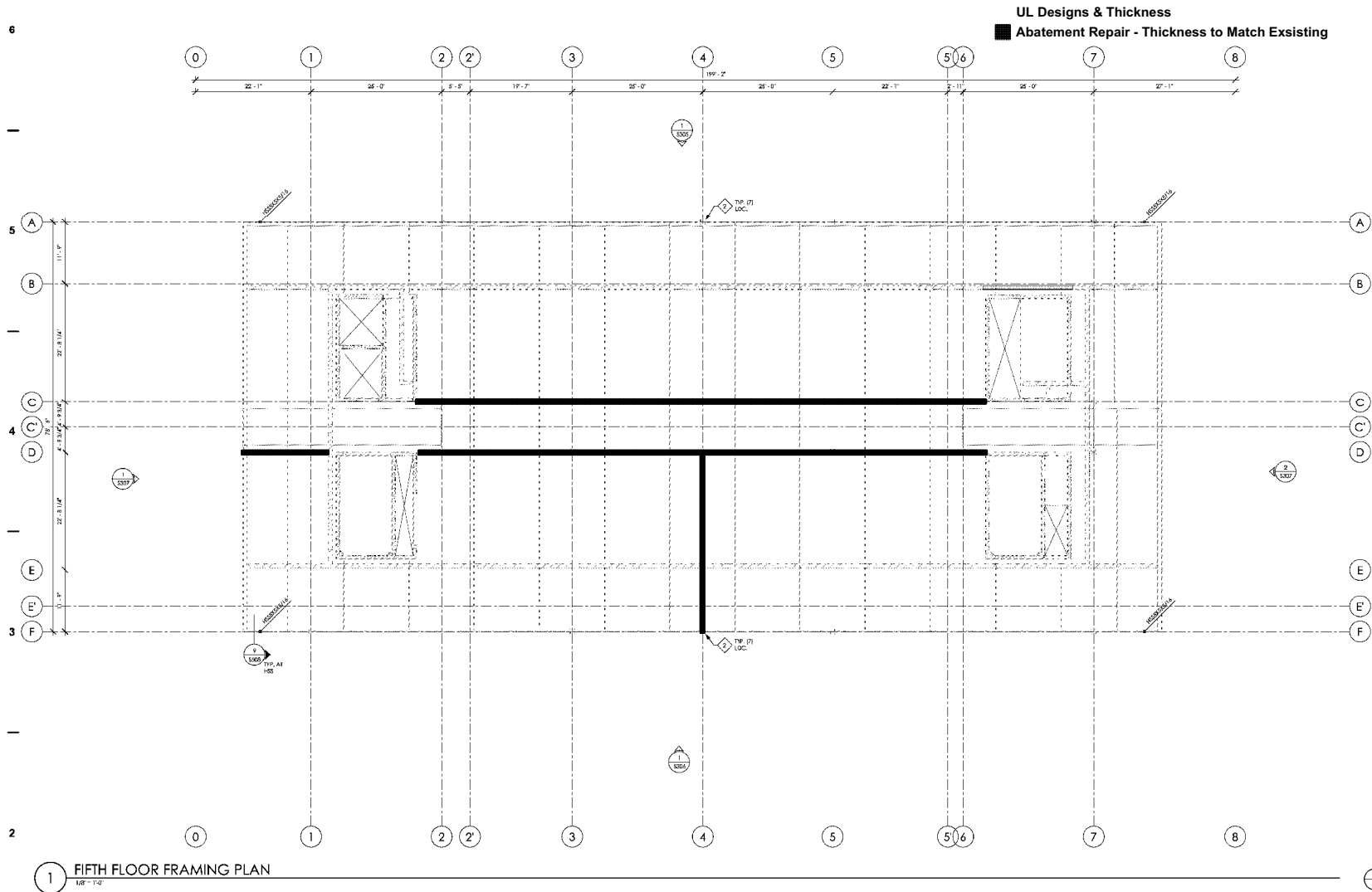
S102



BORA ARCHITECTS, INC.  
Reviewed for Conformance With  
Design Concept  
By:  
  
06/09/2023  
No Exceptions Taken  
Make Corrections Noted  
Nonconforming - Resubmit  
Phone: 503-226-1575



BORA ARCHITECTS, INC.  
Reviewed for Conformance With  
Design Concept  
By:  
*Leina Waven*  
06/09/2023  
No Exceptions Taken  
Make Corrections Noted  
Nonconforming - Resubmit  
Phone: 503-226-1575



1 FIFTH FLOOR FRAMING PLAN  
1/8" = 1'-0"

BORA ARCHITECTS, INC.  
Reviewed for Conformance With  
Design Concept  
By:  
*Lina Waven*  
06/09/2023  
No Exceptions Taken  
Make Corrections Noted  
Nonconforming - Resubmit  
Phone: 503-226-1575

☒  
☐  
☐

**S106**



100

Diagram illustrating the components of a wall assembly, numbered 1 through 10:

- NOT USED
- WALL MOUNTED LAG ARREST ANCHOR BY OTHERS
- CONCRETE CMIR, COORDINATE LOCATION W/ MEP
- CONCRETE WALL, COORDINATE LOCATION W/ ARCH
- INRILL EXISTING PENETRATIONS W/ #4 CONCRETE SLAB W/ #5 @ 12" O.C. CENTERED IN SLAB, DRILL AND EPOXY FILL IN EXISTING SLAB USING 1/2" H. BIT 500 W. #4 WALL, EXIST
- ROOF MOUNTED LAG ARREST ANCHOR BY OTHERS
- REMOVE/ROOF: INSTALL W/ BEAM PRIOR TO CUTTING OPENING
- NEW FLOOR PENETRATION, REF. MEP FOR EXACT LOCATION, INSTALL W/ BEAM PROTECTING EXISTING CONCRETE
- CONCRETE W/ METAL DECK W/ 1" F. CONCRETE TOPPING W/ #4 @ 12" O.C. CENTERED IN SLAB
- EXISTING CONCRETE WALL