



[Home](#) / [Council Documents](#)

338-2023

Communication

Request of Elizabeth Durant to address Council regarding Parkrose warehouse development opportunity

Placed on File

A brief description of Communication: Parkrose Warehouse Development Opportunity

Agenda Items

338 Communications in [May 3, 2023 Council Agenda](#)

Placed on File

Requested Agenda Type

Communications

Date and Time Information

Requested Council Date

May 3, 2023

NO PROLOGIS

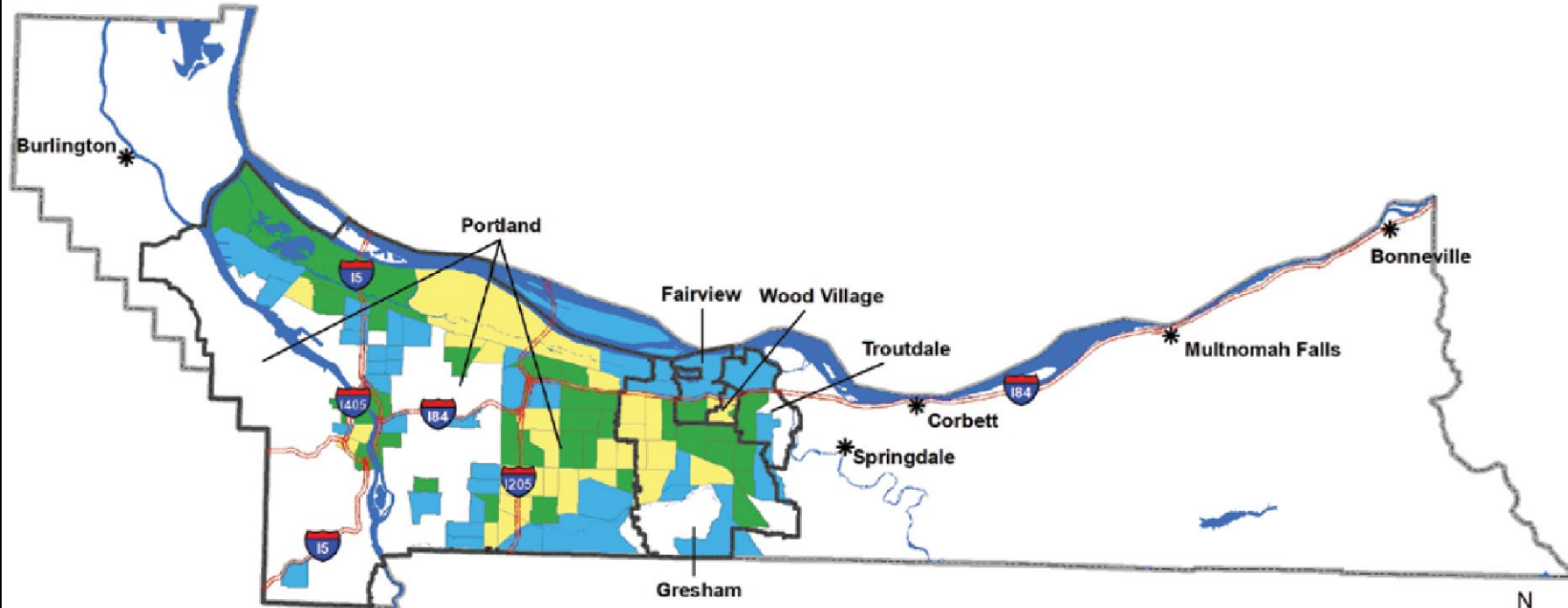


IN PARKROSE-ARGAY

2035 Comprehensive Plan: Policy 7.2



- Environmental Equity
- **“Prevent or reduce adverse environment-related disparities affecting under-served and under-represented communities through plans and investments”**

Multnomah County Census Tracts Most Vulnerable to Climate Change

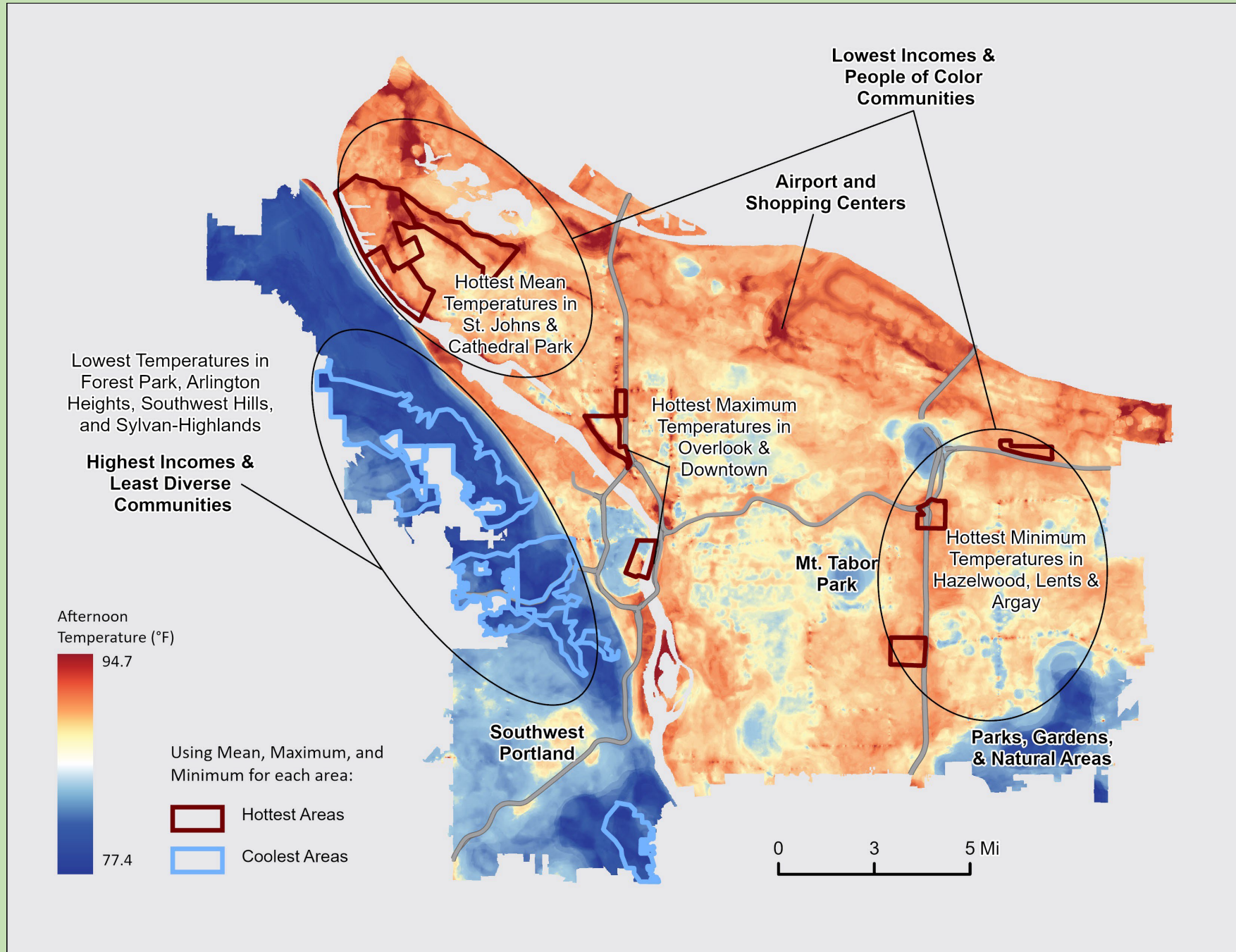


Legend

Top 10%, 25% & 50% of Census Tracts Most Vulnerable to Climate Change (Portland Metropolitan Area)

- | | |
|---|---|
|  Top 10% of Tracts |  Multnomah County |
|  Top 25% of Tracts |  City Boundaries |
|  Top 50% of Tracts |  Cities (outside Metro region) |
| |  Freeways |

Data Source: US Census Bureau and State of Oregon. Index scores are based on data from the American Community Survey (ACS) 2011-2015 5-year estimates and the National Air Toxics Assessments (NATA) 2011 (Zapata, M., J. Liu & M. Harris, 2017).



Source: PSU Professor Vivek Shandas

Please note: Territory data (except Puerto Rico) is not available as comparable to the US. It is only comparable to the territory itself by using the 'Compare to State' functionality. Likewise, some of the indicators may not be available for territories.



Compare to US Compare to State

Environmental Justice Indexes

Supplemental Indexes

Pollution and Sources

Particulate Matter 2.5

Ozone

Diesel Particulate Matter

Air Toxics Cancer Risk

Air Toxics Respiratory HI

Traffic Proximity

Lead Paint

Superfund Proximity

RMP Facility Proximity

Hazardous Waste Proximity

Underground Storage Tanks

Wastewater Discharge

Socioeconomic Indicators

Health Disparities

Climate Change Data

Critical Service Gaps

Additional Demographics

Threshold Map

Find address or place



Map Contents

Pollution and Sources

Diesel Particulate Matter (National Percentiles)

95 - 100 percentile

90 - 95 percentile

80 - 90 percentile

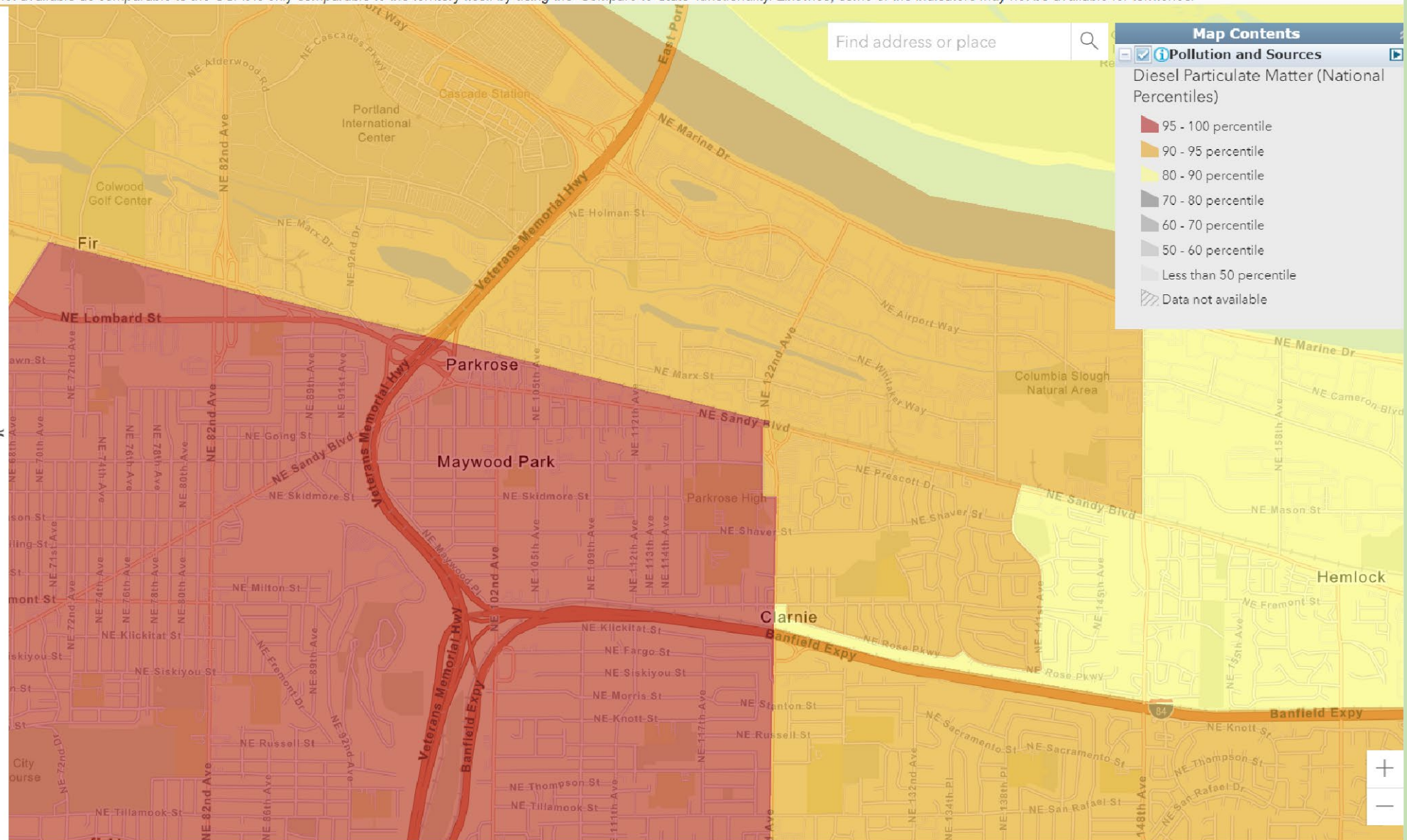
70 - 80 percentile

60 - 70 percentile

50 - 60 percentile

Less than 50 percentile

Data not available



Appendix A – Race Demographics Surrounding Project Intersection

Block Group	BIPOC	White Alone	Black Alone	American Indian or Alaskan Native Alone	Asian Alone	Native Hawaiian and Other Pacific Islander Alone	Some Other Race Alone	Two or More Races Alone	Hispanic or Latino Alone	N
Block Group 3, Census Tract 95.02	0.62	0.38	0.16	0.02	0.03	0.00	0.00	0.11	0.29	1602
Block Group 1, Census Tract 95.02	0.15	0.85	0.11	0.00	0.02	0.00	0.00	0.00	0.02	965
Block Group 2, Census Tract 79	0.39	0.61	0.07	0.02	0.18	0.00	0.00	0.04	0.08	2884
Block Group 1, Census Tract 79	0.43	0.57	0.07	0.00	0.07	0.02	0.00	0.10	0.18	1414
Block Group 2, Census Tract 104.07	0.37	0.63	0.01	0.00	0.00	0.02	0.00	0.03	0.31	1617
Block Group 1, Census Tract 95.01	0.36	0.64	0.11	0.00	0.14	0.03	0.00	0.06	0.03	1694
City of Portland	0.30	0.70	0.06	0.01	0.09	0.01	0.00	0.05	0.10	650380

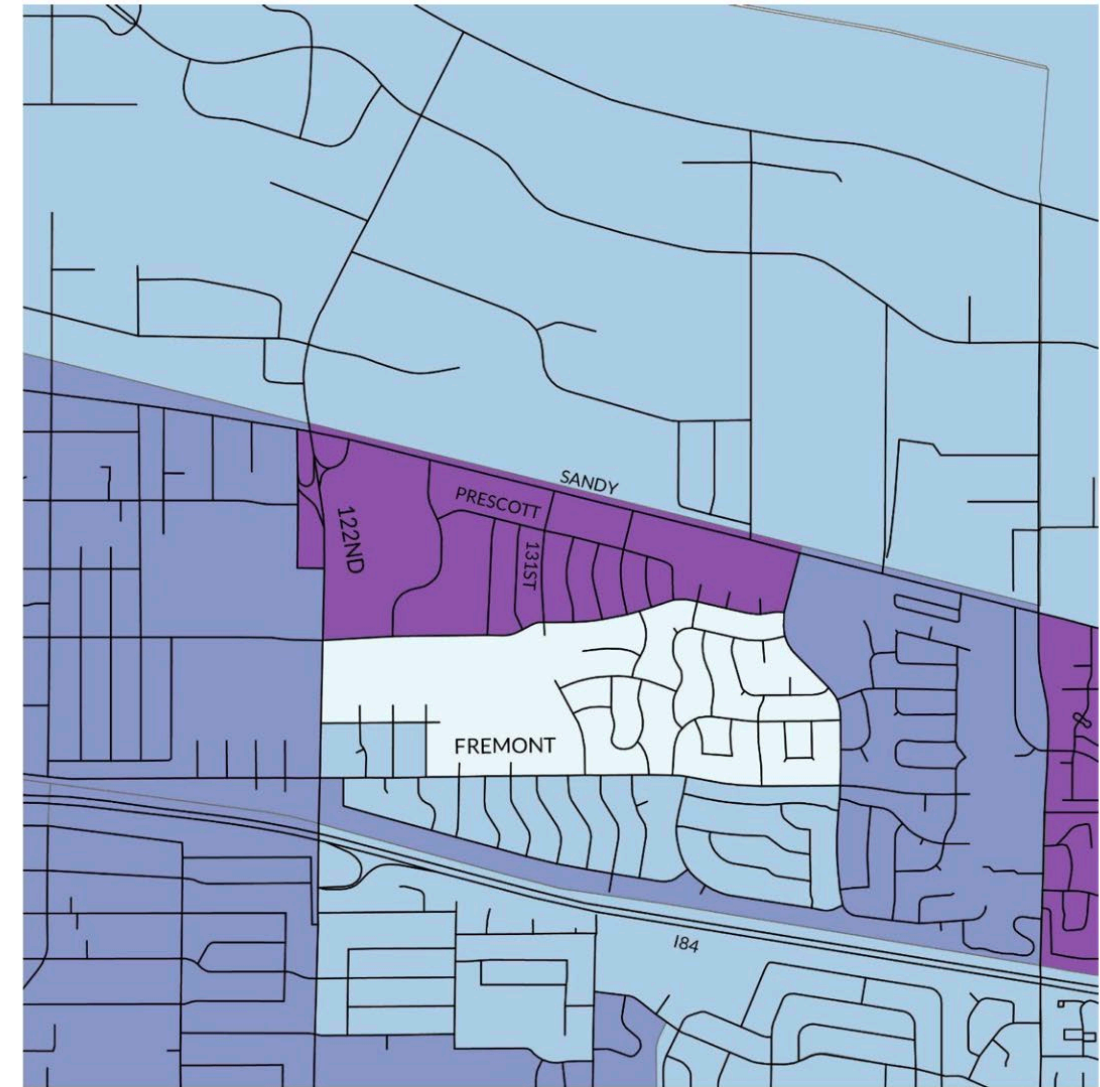
Source: ASC 2015-2020 5 Year Estimates

Notes: BIPOC calculated by project team accounts for all non-white residents

Column N represents the total population in each block group

Source: Bennett, C., Susuras, C., Hack-Davidson, K. (2022, April 28). PSU Memorandum for Argay Terrace Better Blocks Grant. Data taken from 2020 US Census.

Appendix B - Block Group BIPOC Population (%)



Legend

City Streets

Census Block Groups

% BIPOC

0.00-0.17

0.17-0.34

0.34-0.51

0.51-0.68

0.68-0.85

0 0.13 0.25 0.5 Miles N





Source: City of Portland

Oregon

Recipient	Project Name	Funding	Project Type	Project Summary
City of Portland	Portland, leading by example: A Technology-enabled Zero Emission Zone	\$1,999,384	Curb Management	Use data and sensors to establish a zero emissions delivery zone in Portland.

Source: US Department of Transportation

Congressman Earl Blumenauer and Commissioner Mingus Mapps talk 122nd Ave plan

February 17, 2023 by [Taylor Griggs \(Staff Writer\)](#)



Commissioner Mingus Mapps and Congressman Earl Blumenauer at a press conference on 122nd Ave this morning. (Photo: Taylor Griggs/BikePortland)

The sidewalk on 122nd Avenue is not necessarily the ideal place to hold a press conference, what with the high volume of loud car traffic zooming down the street a few feet away. But that's exactly what made it important for U.S. Representative Earl Blumenauer, Commissioner Mingus Mapps and Portland Bureau of Transportation staff to meet there this morning.

Straining to hear each other talk over the noise on the street, it was clear to everyone in attendance how much this corridor needs a transformation — and they hope that change is coming thanks to \$20 million in federal funding the city received at the beginning of February.

“122nd Avenue runs through some of our most diverse and dynamic neighborhoods, but it’s one of the most dangerous roads in the metro area. With this grant, that’s about to change.”

-Commissioner Mingus Mapps

90 Bay Freight
Warehouse two
blocks from Argay
Residence (NE 138th)





+



PROLOGIS



Environmental Equity for
Parkrose and Argay Terrace.

Pro-livability, Pro-economic change,
no Prologis.

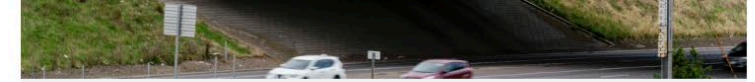
The board's student representatives have been there every step of the way.



Parkrose school board student representatives Justin Santos, Bemnet "Beni" Berhe, and Julius Hunter Napa'a at Parkrose High School, April 17, 2023. There are four students on the Parkrose school board.

Elizabeth Miller / OPB

They've signed the [petition](#) created by a community member opposing Prologis's plan. It has more than 5,000 signatures.



A Portland glass recycling plant has 18 months to halt its air pollution

The Department of Environmental Quality issued Owens-Brockway a construction permit to prevent air contaminants from reaching nearby neighborhoods.

Nov. 15, 2022



Oregon youth demand action on climate change

From drought and floods to wildfires and extreme heat, climate change is now inescapable. Young climate activists say: enough. They're organizing for action and working to get policymakers to pay attention to them. We're gathering some of these

