



7462

COMMUNITY TROPHY
PRESENTED BY
PORTLAND 1921 ROSE FESTIVAL
ASSOCIATION
TO
COMMUNITY AWARDED FIRST PRIZE
IN FLORAL PARADE
FOR
MOST BEAUTIFUL ENTRY
DECORATED BY THE RESIDENTS
TO BE COMPETED FOR
ANNUALLY

PORTLAND
ROSE
FESTIVAL

OFFICIAL
PROGRAM
Price Ten Cents

PORTLAND
JUNE 20-21-22-23

OREGON
PRESENTS ITS
FIFTEENTH
Annual Floral
Fete
NINETEEN TWENTY-TWO

Summary of Rose Festival Events



Coronation Day

TUESDAY, JUNE TWENTIETH

	Page
Arrival of Princess and Coronation of Queen . . .	7
Rose Show—Official opening	20
Festival Center—Official opening	21
Sportsman's Tourists Show—Official Opening . . .	19

Regatta Day

WEDNESDAY, JUNE TWENTY-FIRST

The Regatta	9
Mass Meeting of Oregon Women, honoring Miss Alice Robertson, President Warren G. Harding's Personal Representative	22
Admiral's Ball	9
Festival Center	21
Sportsman's Tourist Show	19
Rose Show	20

Army and Navy Day

THURSDAY, JUNE TWENTY-SECOND

Gymkana	10
Fireworks Display	11
Rosarian Ball	12
Festival Center	21
Sportsman's Tourist Show	19
Rose Show	20

Floral Pageant Day

FRIDAY, JUNE TWENTY-THIRD

Grand Floral Parade	13
Festival Center	21
Grand Carnival Ball	21
Whitney Boys' Chorus, featuring Bobby Murray .	23

(Friday, Saturday, Sunday)



PORTLAND'S Rose Festival, celebrated each year in June, when the gentle spring sunshine of the Oregon country unfolds myriads of swelling buds into dainty, fragrant bloom, has carried the fame of Portland and the Portland rose all over the world. Through her unbroken series of 15 annual Rose Festivals, each one a memorable marvel of prolific loveliness and beauty, to throngs of tourists and visitors, Portland has become known to the far corners of the earth as "The Rose City."

¶ The growing of roses out of doors, with practically no protection necessary to the shrubs during the mild winters, is one of the numerous blessings bestowed upon the great Oregon country.

¶ Noted as a city of homes, and with the home-making, hospitable, beauty-loving spirit an outstanding characteristic of her people, Portland in June is a delight to the eye, a city of loveliness and charm, to visitors from less favored lands and climes. Roses bloom with prodigal beauty and in prolific numbers, not only in the wonderful rose gardens of Portland's wealthy homes, but with strict impartiality, may be seen adorning modest door yards everywhere, and clamboring in gay and fragrant profusion over the cottage roofs and verandas of the suburban districts.

¶ Because of rare endowments of climate, soil and other natural conditions, Portland was selected a few years ago by the American Rose Society as the site for the International Rose Test Gardens. These great test gardens, which are the mecca for rose culturists from all over the world, have already grown beyond the limits of their present premises, and in the near future will be moved to the Washington City Park where a location of ample space has been secured. One of the dominating sections of the International Test Garden is that assigned to the Royal Rosarians. In this section, where practically every known variety of rose is flourishing under personal care and attention, each member of the Royal Rosarian organization is sponsor to one or more rose plants assigned to him by the Royal Keeper of the Rosarian garden. The technical development, official records and other data incident to the cultivation of the many hundreds of new blooms under test are in charge of the Portland Rose Society, whose membership includes many internationally noted rose culturists. The latter fact, coupled with the rare natural advantages of Portland for rose culture, was influential in securing for this city the International Rose Gardens.

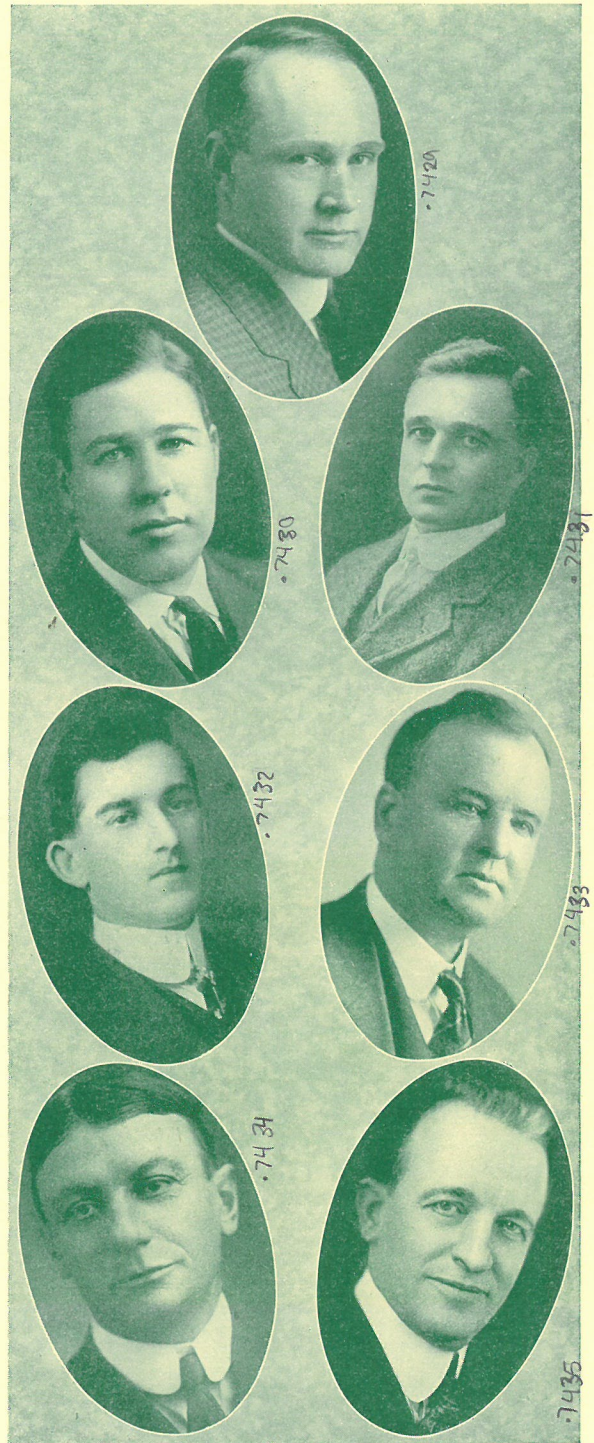
¶ The production of the annual Rose Festival is under the management of a board of governors, comprising twelve prominent citizens who are each year elected to office at an assembly of delegations from all the leading civic clubs, business and trades organizations, community societies and other representative bodies. These twelve men serve without compensation, devoting their time, energies and trained business ability to the work for several months each year.

¶ The Rose Festival is financed each year through private subscriptions from business firms and citizens of the city. The soliciting of these subscriptions has, for many years past, been the voluntary service of the Royal Rosarians, assisted by a number of prominent business and professional men working with them.



1922 ROSE FESTIVAL GOVERNORS

WM. F. WOODWARD	
Alternate for Louis G. Clarke	
MRS. FRANK McCRILLIS	CLAY S. MORSE
Second Vice-President	First Vice-President
ERIC V. HAUSER, President	
WM. P. MERRY	HENRY W. KENT
Secretary	Executive Secretary
LOUIS G. CLARKE, Treasurer	



1922 ROSE FESTIVAL GOVERNORS

PERCY G. ALLEN	
M. E. CRUMPACKER	FRED W. GERMAN
MATT J. SLATKY (Sec. to the Pres.)	JAMES FORBES
FRED W. VOGLER	W. C. CULBERTSON



Center: MISS HARRIET GRIFFITH, Queen of Rosaria.

Attendants (left to right): Misses Alice Bowman, Mary Helen Spaulding, Doris Henningsen, Pauline Titus, Edith Ottenheimer, Elizabeth Ettinger, Janet House, Margaret Cook.

Coronation Day

TUESDAY, JUNE 20, 1922

Directors in Charge
 MRS. FRANK McCRILLIS
 MR. W. C. CULBERTSON



11:30 A. M.—Arrival by Royal Barge of Harriet, Queen elect of Rosaria, and Royal Party, escorted by the Fleet of Her Domain. Presentation of Princess Harriet by Prime Minister Dundore to Governor Olcott, Mayor Baker and President Hauser of the Rose Festival Governors, who will welcome her in the name of The Commonwealth, Municipality and the Realm of Rosaria. Landing and reception ceremonies, Belmont Street Quay.

12:00 M.—Entry Royal to the City under escort of Rosarians, Military and Naval Staff, soldiery and citizenry, officials of state.

12:15 P. M.—Official luncheon—Gold room, Multnomah Hotel.

2:30 P. M.—Coronation ceremonies at Laurelhurst Park, followed by celebration festivities staged in a pastoral setting of surpassing beauty—allegorical dancing by groups of children—direction of Professor Robert Krohn.

4:15 P. M.—Official opening of Rose Show at Armory by Queen Harriet.

4:30 P. M.—Official opening of Sportsman-Tourist Exposition at Armory.

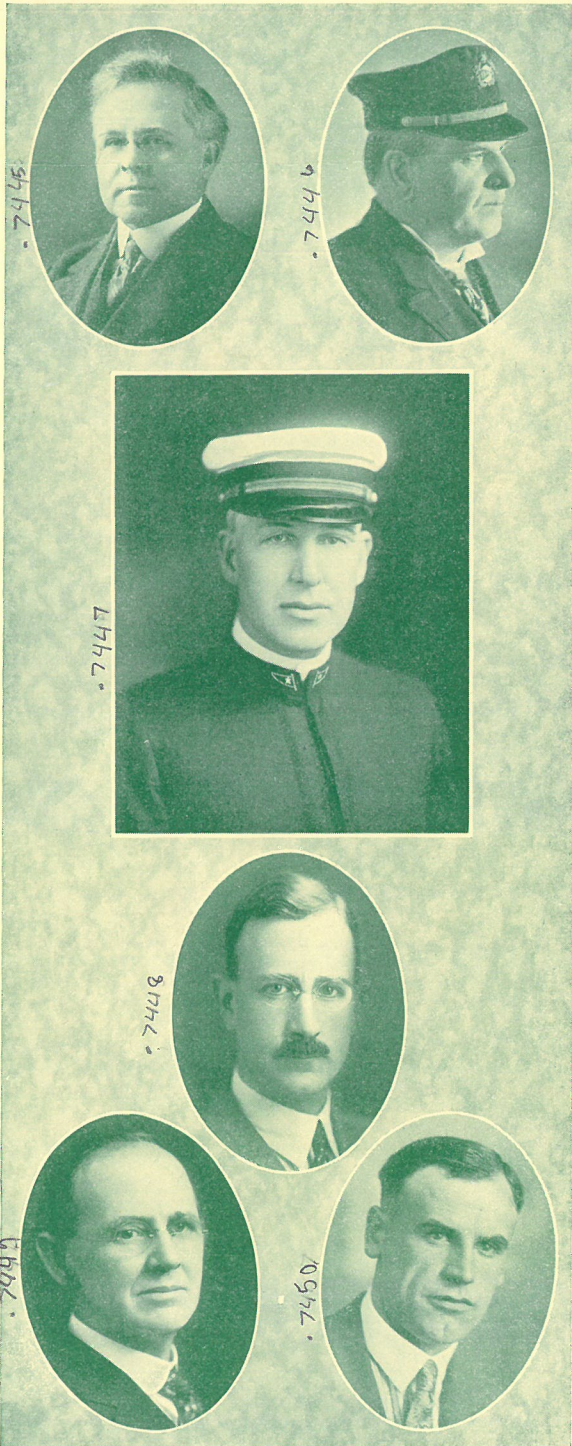
5:00 P. M.—Queen Harriet officially opens Festival Center.

LOCATIONS

LAURELHURST—East 39th and Stark. Take Ankeny and Sunnyside cars.

ARMORY—Tenth and Couch.

FESTIVAL CENTER—(South Park Blocks), Salmon to Jefferson, Park to West Park.



ADMIRAL OF REGATTA AND STAFF

DR. CHAS. B. HILL COMMODORE C. W. BOOST
 ROY T. BISHOP, Admiral
 KENNETH BEEBE, Secretary
 A. A. HOOVER ORTH MATHIOT

The Regatta

WEDNESDAY, JUNE 21, 1:30 P. M.
 On the Willamette River

COURSE—Start and finish of all races between Morrison and Hawthorne Bridges

Official Reviewing Stand—Belmont Street Quay

FRED W. VOGLER, Director in Charge
 ROY T. BISHOP, Admiral of the Regatta
 RALPH STAEHLJ, Chief Aide

General Committee

COMMODORE C. W. BOOST
 KENNETH BEEBE, Secretary

DR. CHARLES E. HILL	SAM SMOOT
A. A. HOOVER	W. H. CURTIS
F. E. NEWELL	JACK CODY
F. W. VOGLER	F. G. EPTON
GEORGE SHEPPARD	ED PIERE
CAPT. E. W. SPENCER	WM. PARHAM
J. M. KLIPPEL	FRANK BUTLER
R. H. NEWBERGER	L. N. MEYERS

Regatta Judges

H. E. JUDGE	R. C. HART
HAL ROACH	DANIEL PRATT

THE PROGRAM

SUGGESTIVE of a three-ring circus in liveliness and variety of action, the Rose Festival Regatta, staged on the Willamette River between the Hawthorne and Burnside Bridges, will provide 3 hours and 25 minutes of thrills, laughter and entertainment. Racing boats and outstanding water sports talent from all over the Pacific Coast will participate in the events scheduled on the program. Among the speediest water craft in the world will compete for valuable cups, trophies and utility prizes.

Viewing locations for the regatta can be had on the Burnside and Hawthorne bridges, the docks on both sides of the river, and streets fronting on the course.

- 1:30 P. M.—Sixteen-foot race boats—1st heat.
- 1:45 P. M.—Evenrude powered canoe race.
- 2:00 P. M.—Cruiser handicap race.
- 2:30 P. M.—Sixteen-foot race boats—2nd heat.
- 2:45 P. M.—Fancy diving—men and women entrants from Multnomah Athletic Club.
- 2:50 P. M.—Evenrude rowboat motor race.
- 3:00 P. M.—Runabout handicap race.
- 3:20 P. M.—Ships' rowing race—entries open to crews from all vessels in harbor.
- 3:20 P. M.—Surfboard riding exhibition.
- 3:35 P. M.—Fifty-yard swimming race.
- 3:45 P. M.—Free-for-all race boats—the fastest boats on the Pacific Coast will compete in this event.
- 4:00 P. M.—Canoe tilting contest.
- 4:15 P. M.—Canoe race—Peterborough—men's singles.
- 4:25 P. M.—Canoe race—canvas—men's singles
- 4:40 P. M.—Single shell rowing race—entrants from Portland Rowing Club.
- 4:55 P. M.—Canoe race—men's doubles.
- 5:10 P. M.—Double shell rowing race—entrants from Portland Rowing Club.
- 5:25 P. M.—Canoe race—mixed doubles.
- 5:40 P. M.—Four-paddle canoe race.
- 5:55 P. M.—Four-oared shell race—entrants from Portland Rowing Club.

Admiral's Ball

WEDNESDAY, JUNE 21, 1922, 9 P. M.
 Grand Ball Room, Multnomah Hotel

ROY T. BISHOP, Admiral of the Regatta
 Assisted by His Staff

The Admiral's Ball is one of the major social events of the festival week. On this occasion the Admiral and his staff in the regalia of their respective official rank do honor to Her Majesty Harriett, Queen of Rosaria, and officers of the visiting fleet. Formal, by invitation.

Army and Navy Day

THURSDAY, JUNE 22

Multnomah Field—Nineteenth and Morrison Streets

CLAY S. MORSE, Director in Charge
Assisted by ROBERT E. WELLS

General Committee

PHIL METSCHAN	W. C. CULBERTSON
DOW. V. WALKER	FRED CARLTON
OSWALD WEST	JOSEPH RIEG
FLETCHER LINN	MRS. D. B. KELLY
WALTER LONG	VERE WINDNAGLE
H. M. KERRON	LIONEL MACKAY
JAS. E. BROCKWAY	C. P. KEYSER
ROBERT KROHN	THOMAS LENNARD
COLONEL WILLIAM JORDAN, U. S. A.	
LIEUTENANT R. E. KERR, U. S. N.	
CAPTAIN J. P. SCHWERIN, U. S. M. C.	



Gymkana

3000 IN THE CAST

- 1:30 P. M.—Military review and parade. Line of march, south on Sixth Street from Burnside to Alder Street, west on Alder to Multnomah Field.
- 2:00 P. M.—Pageant of Flowers, 1000 children participating.
- 2:30 P. M.—Field Events, Army vs. Navy. 100-yard dash, 220-yard dash, 440-yard dash, relay race, tug-of-war, regimental drill, Navy rifle drill.
- 2:45 P. M.—Death-defying aeroplane acrobatics.
- 3:00 P. M.—Hunt Club Special Program.
- 3:30 P. M.—Drill teams of Fraternal Organizations in competition.
- 4:00 P. M.—Selected program by Boy Scouts of America.

Motion Pictures in the Making

During the entire program a motion picture company, composed of artists from Los Angeles, will produce a feature comedy on the grounds.

Page ten

Spectacular Fireworks Program

THURSDAY, JUNE 22, 8:15 P. M.

Baseball Park—24th and Vaughn Streets

FRED W. GERMAN, Director in Charge

Aides

CITY COMMISSIONER C. A. BIGELOW
FIRE CHIEF JOHN E. YOUNG
FIRE MARSHAL ED GRENFELL
P. P. FISHER

Great Sachem, Improved Order of Redmen, of Oregon

PRECEDED by parade through downtown district of several hundred blood-thirsty Redskins in war paint and full war costume, who will stage an attack on Pale Face Immigrant Train in Premier Spectacle of the Fireworks Program.

This big event will comprise 53 set pieces and brilliant specialties, together with thrilling sham battles, colorful historic spectacles, a realistic reproduction of an Oregon forest afire and other special features.

1—**Unique Display of Daylight Fireworks**, consisting of 20 12-inch and 20 18-inch daylight bombs, bursting in the air at a height of 400 feet and releasing inflated paper animals and other figures, parachutes, flags, smokes, comical specialties, etc.

2—**Illuminated Airplane Battle**. Realistic spectacular feature showing two war planes battling in the clouds, amidst spurting flames, bursting bombs, mimic hand grenades and machine gun fire.

3—**Spectacular reproduction** of a great Oregon forest fire. More than 100 lbs. of red fire will be ignited simultaneously to produce this thrilling effect.

4—**Brilliant Aerial Display**, comprising 50 15-inch bombs, 30 20-inch bombs and 30 25-inch bombs. These pyrotechnics will be of exceptional brilliancy, comprising such novelties as octopus, weeping willow, magnesium, national color and government signal bombs.

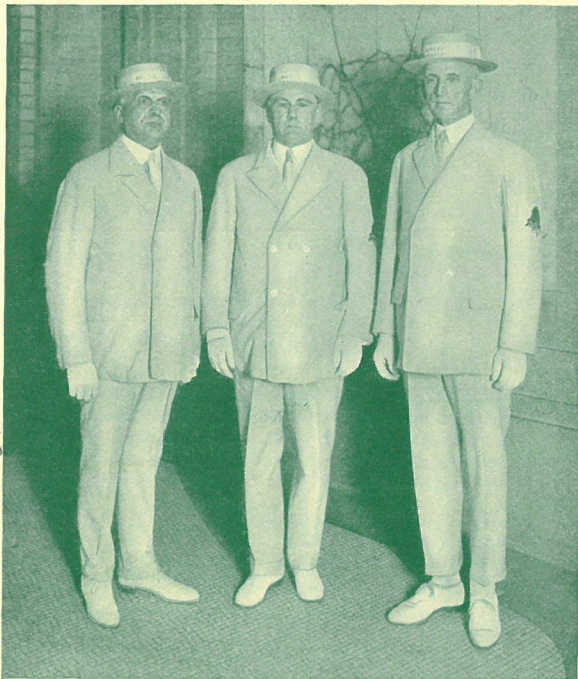
5—**Spectacular Sham Battle**, showing reproduction of an active sector in France. A detachment of American Legionnaires will assist in staging this brilliant spectacle, in which exact effects of hand grenades, maroons, smoke-pots, machine guns, shrapnel, flares, signal lights, secret signals and other deadly devices and modern illuminations used by the American doughboys in France will be reproduced with fidelity to detail and thrilling effect.

6—**Pyrotechnic Novelties**, interspersed between other numbers, will include portraits in fire of President Eric V. Hauser of the Rose Festival and Queen Harriet; brilliant set pieces portraying the Caroline Testout, official rose of Portland; patriotic designs and scenic effects in fire; a series of "comical cuss wheels," imaginative solar system, revolving whirligigs, etc.

Grand Premier Special Feature—Between 400 and 500 members of the Improved Order of Redmen, from Oregon and Washington tribes, in war paint, feathered head-dresses and full Indian costume, will stage a hair-raising historic spectacle, portraying an attack by hostile savages upon an immigrant train of pioneer covered wagons. Redmen from more than a score of northwest tribes have answered the call to war sent out by Great Sachem P. P. Fisher. Howling, blood-thirsty savages, attired in war bonnets and full regalia, will attack the little fleet of "prairie schooners," to the accompaniment of beating tom-toms and savage war cries.

Following this great historic spectacle, the Redmen, assisted by the ladies of their auxiliary organizations, will stage a big **Indian War Dance** and a series of allegorical ceremonials centering about the romance of a **Dying Indian Princess**.

Page eleven



7451

ROSARIAN BALL

THURSDAY, JUNE 22, 1922, 9 P. M.

Official ball to Her Majesty, Queen Harriet of Rosaria at Cotillion Hall, 14th and Washington. Formal by invitation.

DUKES OF THE REALM

DEAN VINCENT FRANK E. SMITH E. J. JAEGER
C. C. COLT W. J. HOFFMAN

FRANK McCRILLIS, Crown Prince

EXECUTIVE

JOHN H. DUNDORE, Prime Minister
E. A. PIERCE, Lord High Chancellor
O. C. BORTZMEYER, Secretary of State

PRIVY COUNCILORS

ROBERT KROHN C. J. MATHIS W. D. WHITCOMB
JOHN SAARA R. A. STEWART OTTO MIELKE
JOHN C. BOYER FRANK V. SMITH

THIS organization is the body guard of her Majesty the Queen of Rosaria, and is the official entertaining body of the Portland Rose Festival. Organized early in 1912, it has grown steadily in favor and is now known not only in Oregon, but throughout the entire country.

“The object of the organization shall be to promote the best interests of the Portland Rose Festival,” so reads the Edict, a compilation of rules under which the Royal Rosarians operate. The members are well known, active business men of Portland. The membership is limited, and includes a drill team and a band of 40 musicians. Its white uniform of cream serge is a common sight on our streets and is well known throughout the entire Pacific Coast.

The Rosarians have made pilgrimages to many cities in Oregon; also to Tacoma, Seattle and Spokane in Washington; and to San Francisco, Oakland, Los Angeles, Pasadena and San Diego in California; all in the interests of the Portland Rose Festival. On all occasions the members pay their own expenses, including railroad fare.

The titular head of the Order is the Queen of Rosaria, the social head is the Crown Prince; the executive head the Prime Minister. The ruling body is a Privy Council of eleven, who are elected by the entire membership.

Page twelve

Grand Floral Parade

FRIDAY, JUNE 23, 1922—1:30 P. M.

Director in Charge
PERCY G. ALLEN

Grand Marshal
ADMIRAL HENRY T. MAYO, U. S. N., Retired

Aides
MAJOR GEORGE MAYO
CAPT. JAMES PARKER SCHWERIN
LIEUT. R. E. KERR, U. S. N.
LIEUT. JOHN A. BECKWITH, U. S. N.
CAPT. FREDERICK S. COOK, U. S. Eng.



PARADE will form on east side, starting from Grand Avenue and proceed along the following route: North on Grand to Oregon, west on Oregon over the Steel Bridge to Glisan, west on Glisan to Sixth Street, south on Sixth to Burnside, west on Burnside to Tenth Street, south on Tenth to Alder Street, east on Alder to Broadway, north on Broadway to Oak Street, east on Oak to Sixth Street, south on Sixth to Alder, east on Alder to Fifth Street, north on Fifth to Pine, east on Pine to Fourth, south on Fourth to Morrison, west on Morrison to Broadway, south on Broadway to Madison and disband.

SECTION ONE

C. A. BIGELOW, Chairman

(All entries in this section numbered 100 to 199)

FIRE DEPARTMENT—Class A—Best Decorated Motor-Drawn Apparatus—

First Prize, Blue Ribbon.....	\$60.00
Second Prize, Red Ribbon.....	40.00
Third Prize, White Ribbon.....	30.00
Fourth Prize, Pink Ribbon.....	20.00
Fifth Prize, Orange Ribbon.....	
Sixth Prize, Green Ribbon.....	
Honorable Mention, Yellow Ribbon.....	

NOTE—In every class in each section listed herewith seven ribbon prizes will be awarded, denoted by colors specified in above class. Only cash prizes are printed, however, in the following list.

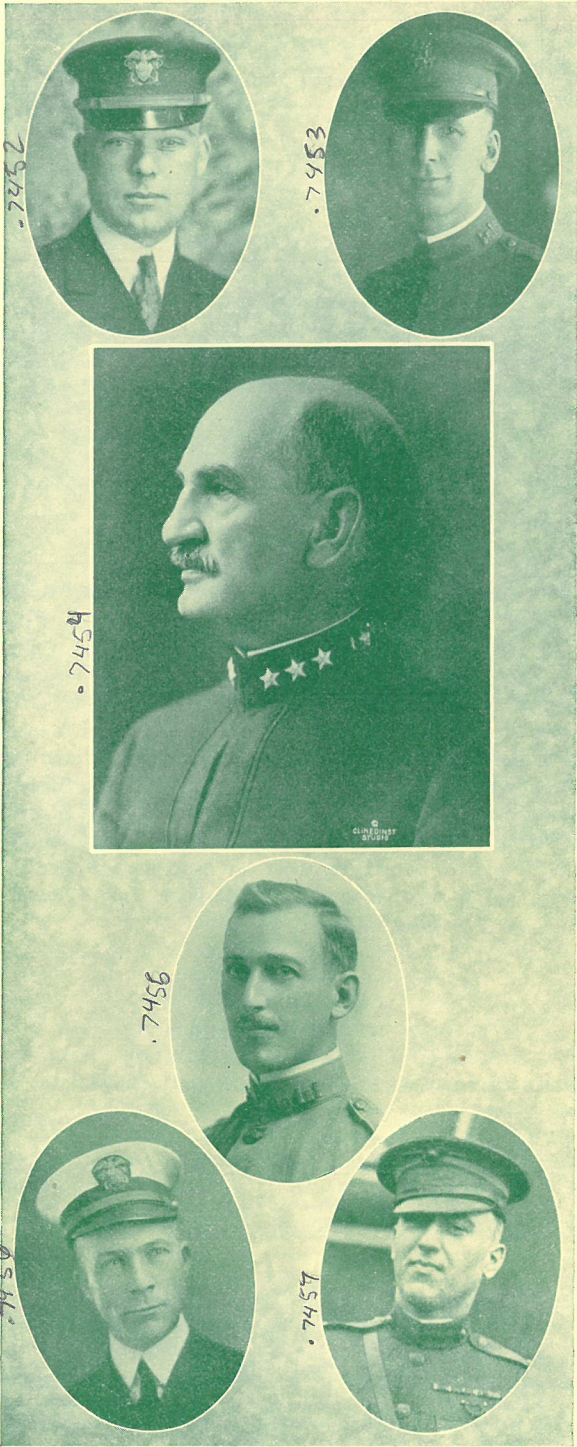
ALL OTHER CITY OF PORTLAND DEPARTMENTS—Class B—Best Decorated Motor-Drawn Entry—

First Prize \$60, Second Prize \$40, Third Prize \$30, Fourth Prize \$20, Fifth Prize \$10.

ALL OTHER CITY OF PORTLAND DEPARTMENTS—Class C—Best Decorated Horse-Drawn Entry—

First Prize \$60.

Page thirteen



GRAND MARSHAL AND AIDES

LIEUT. J. A. BECKWITH CAPT. FREDK. S. COOK
 U. S. N. U. S. A.
 ADMIRAL HENRY T. MAYO, U. S. N. Retired
 MAJOR GEORGE MAYO
 LIEUT. R. E. KERR CAPT. JAS. P. SCHWERIN
 U. S. N. U. S. A.

SECTION TWO

CLAY S. MORSE, Chairman

(All entries in this section numbered 200 to 299)

**FRATERNAL SOCIETIES AND ORGANIZATIONS—
 OUTSIDE OF PORTLAND—Class A—**Best Uniformed Marching Club with Band and Decorated Car—
 First Prize \$100, Second Prize \$75, Third Prize \$50, Fourth Prize Trophy.

**FRATERNAL SOCIETIES AND ORGANIZATIONS—
 OUTSIDE OF PORTLAND—Class B—**Best Uniformed Marching Club with Float—
 First Prize \$75, Second Prize \$50, Third Prize Trophy.

**FRATERNAL SOCIETIES AND ORGANIZATIONS—
 OUTSIDE OF PORTLAND—Class C—**Best Decorated Car or Float—
 First Prize \$50, Second Prize \$30, Third Prize Trophy.

SECTION THREE

WM. P. MERRY, Chairman

(All entries in this section numbered 300 to 399)

OUTSIDE CITIES AND MUNICIPALITIES—Class A—Best Decorated Entry—from All Cities of 50,000 Population or More—
 First Prize \$100, Second Prize \$50, Third Prize Trophy.

OUTSIDE CITIES AND MUNICIPALITIES—Class B—Best Decorated Entry—From Cities under 50,000 Population—
 First Prize \$100, Second Prize \$50, Third Prize Trophy.

OUTSIDE CITIES AND MUNICIPALITIES—Class C—Booster Clubs and Civic Organizations—
 First Prize \$100, Second Prize \$50, Third Prize Trophy.

OUTSIDE CITIES AND MUNICIPALITIES—Class D—Hotels and Transportation Lines—
 First Prize \$100, Second Prize \$50, Third Prize Trophy.

SECTION FOUR

MRS. G. J. FRANKEL, Chairman

(All entries in this section numbered 400 to 499)

SCHOOLS—Class A—Best Public Grade School Entry, Decorated by Pupils—
 First Prize \$75, Second Prize \$50.

SCHOOLS—Class B—Best High School Entry, Decorated by Pupils—
 First Prize \$75, Second Prize \$50.

SCHOOLS—Class C—Best High School Entry, Decorated by Florists—
 First Prize \$75, Second Prize \$50.

SECTION FIVE

R. E. CLOSE, Chairman

(All entries in this section numbered 500 to 599)

SUNDAY SCHOOL—Class A—Best Sunday School Entry, Decorated by Pupils—
 First Prize \$75, Second Prize, \$50.

SUNDAY SCHOOL—Class B—Best Sunday School Entry, Decorated by Florists—
 First Prize \$75, Second Prize \$50.

SECTION SIX

MRS. FLETCHER LINN, Chairman

(All entries in this section numbered 600 to 699)

PRIVATE SCHOOLS AND COLLEGES—Class A—Best Private School or College Entry, Decorated by Students—
 First Prize \$75, Second Prize \$50.

PRIVATE SCHOOLS AND COLLEGES—Class B—Decorated by Florists—
 First Prize \$75, Second Prize \$50.

SECTION SEVEN

GEORGE ARTHUR BROWN, Chairman

(All entries in this section numbered 700 to 799)

CLUBS, CIVIC ORGANIZATIONS AND FRATERNAL SOCIETIES OF PORTLAND—Class A—Best Decorated Civic Club Entry, Consisting of Four or More Cars—

First Prize \$100

CLUBS, CIVIC ORGANIZATIONS AND FRATERNAL SOCIETIES OF PORTLAND—Class B—Best Decorated Civic Club Entry—

First Prize \$75, Second Prize \$50.

CLUBS, CIVIC ORGANIZATIONS AND FRATERNAL SOCIETIES OF PORTLAND—Class C—Best Decorated Fraternal Society Entry—

First Prize \$75, Second Prize \$50.

CLUBS, CIVIC ORGANIZATIONS AND FRATERNAL SOCIETIES OF PORTLAND—Class D—Best Decorated Patriotic Society Entry—

First Prize \$75, Second Prize \$50.

CLUBS, CIVIC ORGANIZATIONS AND FRATERNAL SOCIETIES OF PORTLAND—Class E—Best Decorated Foreign Society Entry—

First Prize \$75, Second Prize \$50.

CLUBS, CIVIC ORGANIZATIONS AND FRATERNAL SOCIETIES OF PORTLAND—Class F—Best Decorated Entry from Charitable Organizations or Hospitals—

First Prize \$75, Second Prize \$50.

SECTION EIGHT

MRS. PERCY ALLEN, Chairman

(All entries in this section numbered 800 to 899)

NEIGHBORHOOD AND COMMUNITY CLUBS—Class A—Best Decorated Entry by Neighborhood or Community Club—Decorated by Professional Decorator or Florist—

First Prize \$75, Second Prize \$50, Third Prize \$30.

NEIGHBORHOOD AND COMMUNITY CLUBS—Class B—Best Decorated Entry by Neighborhood or Community Club—Decorated by Non-Professionals—

First Prize \$75, Second Prize \$50.

SPECIAL CUP PRIZES—To Division having best combination of Floats—

First Prize Rose Festival Cup, Second Prize Meier & Frank Co. Cup, Third Prize Rose Festival Cup—Contended for yearly.

SECTION NINE

MISS CORNELIA COOK, Chairman

(All entries in this section numbered 900 to 999)

PRIVATE CARS—Class A—Best Decorated Privately Owned Touring Car, Entered and Decorated by Individuals—

First Prize \$100, Second Prize \$50, Third Prize \$30.

PRIVATE CARS—Class B—Best Decorated Privately Owned Touring Car—Decorated by Florists—

First Prize \$100, Second Prize \$50, Third Prize \$30.

PRIVATE CARS—Class C—Best Decorated Touring Car, Privately Owned and Decorated by Individuals, the Retail Price of which is less than \$1500—

First Prize \$75, Second Prize \$50.

PRIVATE CARS—Class D—Best Decorated Privately Owned Roadster or Two-Passenger Car—Decorated by Individuals—

First Prize \$50, Second Prize \$30, Third Prize \$20.

PRIVATE CARS—Class E—Best Decorated Privately Owned Roadster or Two-Passenger Car—Decorated by Florists—

First Prize \$50, Second Prize \$30, Third Prize \$20.

Page sixteen

SECTION TEN

C. H. MCGIRR, Chairman

(All entries in this section numbered 1000 to 1099)

DEALERS, ACCESSORY HOUSES AND GARAGES—Class A—Best Decorated New Car or Cars Entered by any Dealer in Portland—Value of Car to be \$2000—

First Prize \$75, Second Prize \$50.

DEALERS, ACCESSORY HOUSES AND GARAGES—Class B—Best Decorated New Car or Cars Entered by any Dealer in Portland—Value of Car to be Less than \$2000—

First Prize \$75, Second Prize \$50.

DEALERS, ACCESSORY HOUSES AND GARAGES—Class C—Best Decorated Entry by Auto Accessory House—

First Prize \$75, Second Prize \$50.

DEALERS, ACCESSORY HOUSES AND GARAGES—Class D—Best Decorated Entry by Public Garage Owners—

First Prize \$75, Second Prize \$50.

SECTION ELEVEN

FLETCHER LINN, Chairman

(All entries in this section numbered 1100 to 1199)

INDUSTRIAL, BUSINESS FIRMS, BANKS, ETC.—Class A—Best Decorated Entry by Banks, Bond Houses or Financial Institutions—Decorated by Florist—

First Prize \$75, Second Prize \$50.

INDUSTRIAL, BUSINESS FIRMS, BANKS, ETC.—Class B—Best Decorated Entry by Banks, Bond Houses or Financial Institutions—Decorated by Employees—

First Prize \$75, Second Prize \$50.

INDUSTRIAL, BUSINESS FIRMS, BANKS, ETC.—Class C—Best Decorated Entry by Manufacturers—

First Prize \$75, Second Prize \$50.

INDUSTRIAL, BUSINESS FIRMS, BANKS, ETC.—Class D—Best Decorated Entry by Farmers, Gardeners, Granges, Etc.—

First Prize \$75, Second Prize \$50.

INDUSTRIAL, BUSINESS FIRMS, BANKS, ETC.—Class E—Best Decorated Personal Entry by Florists—

First Prize \$75, Second Prize \$50.

INDUSTRIAL, BUSINESS FIRMS, BANKS, ETC.—Class F—Best Decorated Entry by Department Stores—Decorated by Professionals—

First Prize \$75, Second Prize \$50.

INDUSTRIAL, BUSINESS FIRMS, BANKS, ETC.—Class G—Best Decorated Entry by Department Stores—Decorated by Employees—

First Prize \$75, Second Prize \$50.

INDUSTRIAL, BUSINESS FIRMS, BANKS, ETC.—Class H—Best Decorated Entry by Retail Merchants—Decorated by Professionals—

First Prize \$75, Second Prize \$50.

INDUSTRIAL, BUSINESS FIRMS, BANKS, ETC.—Class I—Best Decorated Entry by Retail Merchants—Non-Professionally Decorated—

First Prize \$75, Second Prize \$50.

SECTION TWELVE

B. F. BOYNTON, Chairman

(All entries in this section numbered 1200 to 1299)

GENERAL SERVICE—Class A—Best Decorated Entry by General Public Service Companies—

First Prize \$75, Second Prize \$50.

GENERAL SERVICE—Class B—Best Entry by Hotels and Eating Houses—

First Prize \$75, Second Prize \$50.

Page seventeen

SECTION THIRTEEN

J. R. STUART, Chairman

(All entries in this section numbered 1300 to 1399)

HOME SERVICE—Class A—Best Decorated Entry by Home Service Companies—
First Prize \$75, Second Prize \$50.

SECTION FOURTEEN

F. A. MARTIN, Chairman

(All entries in this section numbered 1400 to 1499)

MOUNTED AND DRIVING ENTRIES—Class A—Best Club or Organization, from City of Portland, Consisting of 24 or More Uniformed and Decorated Mounted Persons—
First Prize \$200.

MOUNTED AND DRIVING ENTRIES—Class B—Best Decorated Horse-Drawn Vehicle and Driver—
First Prize \$50, Second Prize \$30, Third Prize \$20.

MOUNTED AND DRIVING ENTRIES—Class C—Best Decorated Saddle Horse or Pony, with Boy or Girl Rider Under 16 Years of Age—
First Prize \$30, Second Prize \$20, Third Prize \$10.

MOUNTED AND DRIVING ENTRIES—Class D—Best Decorated Saddle Horse with Rider Over 16 Years of Age—
First Prize \$25, Second Prize \$15, Third Prize \$10.

MOUNTED AND DRIVING ENTRIES—Class E—Best Decorated 6-Horse-Drawn Entry—
First Prize \$100, Second Prize \$50, Third Prize \$30.

SECTION FIFTEEN

P. M. DIEDERICH, Chairman

L. W. KEENAN, Associate Chairman

(All entries in this section numbered 1500 to 1599)

MOTORCYCLES AND BICYCLES—Grand Prize Donated by Cycle Trades of America as School Trophy Cup—Permanent Ownership When Won Twice.

MOTORCYCLES AND BICYCLES—Class A—Best Decorated Bicycle Entry by Bicycle Club, Consisting of 12 or More Riders Under 15 Years of Age—All Prize Money to go to the school under whose banner the entry is made—
First Prize \$50, Second Prize \$25, Third Prize \$15, Fourth Prize \$10.

Points Governing—Largest entry 50 points, and best decorated unit 50 points.

MOTORCYCLES AND BICYCLES—Class B—Best Decorated Motorcycle with Side Car—
First Prize \$50, Second Prize \$25, Third Prize \$15.

MOTORCYCLES AND BICYCLES—Class C—Best Decorated Motorcycle (Solo)—
First Prize \$50, Second Prize \$25, Third Prize \$15.

MOTORCYCLES AND BICYCLES—Class D—Best Decorated Bicycle—
First Prize \$25, Second Prize \$15, Third Prize \$10.

SECTION SIXTEEN

MRS. D. B. KELLY, Chairman

(All entries in this section numbered 1600 to 1699)

SPECIAL ENTRY FOR CHILDREN—Class A—Combination Entry for Children Under 12 Years of Age—Entry to consist of decorated cart or wagon, containing a child under 8 years of age, and drawn by two or more decorated bicycles or tricycles (special car will follow this entry with attendants to care for children)—
First Prize \$25, Second Prize \$20, Third Prize \$15, Fourth Prize \$10, Fifth Prize \$5.

Sportsmen-Tourist Exhibit

Armory—10th and Couch Streets

Officially Opened Tuesday Afternoon at 4:30 P. M.

TUESDAY—4:30 P. M., 7 P. M.

WEDNESDAY—10 A. M., 2 P. M., 7 P. M.

THURSDAY—10 A. M., 2 P. M., 7 P. M.

FRIDAY—10 A. M.



OREGON'S first annual Sportsmen and Tourist Exposition will be held during the Rose Festival Week. The Rose Show will be housed in the same building. The purpose of the Sportsmen-Tourist exhibit is to portray a comprehensive exhibition of the unequalled facilities for outdoor recreation and the scenic grandeur of the Oregon country, and to acquaint the people of Portland and our visitors with America's greatest playground. Commercial bodies and organizations representing municipalities of Oregon and the Northwestern country are arranging exhibits typical of their own surroundings and setting forth the attractions of the locality.

There is no admission charge. Among the special displays pledged in connection with the show are: Elaborate reproduction by the United States Forestry Service; films and colored slides through the cooperation of Mr. Finley; special National Park exhibits; the United States Biological Survey; and State Game Commission, which will include the showing of live animals; the Y. M. C. A. will have an exhibit of Spirit Lake camp and will also demonstrate Oregon's winter sports.

An information booth will be maintained and it will be the purpose of the committee in charge to supply information to our visitors about Oregon and the Northwest, its many beautiful recreation points and scenic attractions.

The Oregon Sportsmen Show is in charge of the Portland Chamber of Commerce, with Henry J. Ottenheimer as General Chairman, assisted by the following committee:

CAMERON SQUIRES
W. J. BOYD
S. C. PIER
P. HETHERTON, Secy.
MAJOR JOHN GUTHRIE
R. W. PRICE
PAUL FARRENS
R. J. KIRKWOOD

The Rose Show

Armory—Tenth and Couch Streets

TUESDAY—4:30 P. M., 7 P. M.
WEDNESDAY—10 A. M., 2 P. M., 7 P. M.
THURSDAY—10 A. M., 2 P. M., 7 P. M.

JAMES FORBES
Director in Charge

(Under the auspices of the Portland Rose Society)

GUY W. TALBOT, President
J. A. CURREY, First Vice President
O. W. MIELKE, Second Vice President
R. G. JUBITZ, Treasurer
C. H. GUEFFROY, Secretary



GUY W. TALBOT

THE Portland Rose Society, which will have charge of the display of cut roses at the Armory, is the oldest rose organization in the United States, having annually held exhibitions of roses grown by amateurs for the past thirty-three years. The display this year promises to exceed any previous effort of this organization, as it is presented at a time when the flowers are at their best.

¶ In this show will be not only displays by individual gardens, but there will also be exhibitions of roses from various districts of the city, the different communities competing against each other to show the finest

roses from the gardens of their section. There will also be displays from various cities of the Northwest.

¶ There is no admission to this wonderful show, and everyone should avail himself of the opportunity to see an exhibition of choicest roses.

Festival Center

South Park Blocks—Salmon to Jefferson Streets

JAMES FORBES, Director in Charge



C. P. KEYSER

A NOTABLE display of roses and other flowers during the Rose Festival will be exhibited in the South Park Blocks, extending from Salmon to Jefferson Streets, under the direction of Oregon Florists' Club and the Park Bureau of the City of Portland.

¶ The Festival Center will be open Tuesday, June 20, and will remain open daily during the entire period of the Rose Festival, closing Friday evening, June 23.

¶ On this occasion the South Park Blocks are landscaped into a beautiful garden, elaborately decorated, in addition to the floral display, with clusters and streamers of richly

colored electric lights. For months the members of the Oregon Florists' Club have been making great preparations to bring to perfection at Festival time their choicest flowers.

¶ The Park Bureau, under the direction of City Commissioner S. C. Pier and Park Superintendent C. P. Keyser, has prepared a great collection of plants and flowering shrubs. Under the personal supervision of E. T. Mische, landscape architect of national reputation and on plans prepared by him, the Florists and Park Bureau will produce a gorgeous and colorful picture, not only of bright flowering plants of our city but also displays of shrubs and trees native to this section of the country in which nature has so abundantly endowed Portland.

Grand Carnival Ball

Directors in Charge
W. C. CULBERTSON
FRED W. GERMAN
MATT. J. SLATKY

¶ The grand finale of the Rose Festival will be the Carnival Ball at the Armory, 7 o'clock P. M., Friday, June 23, 1922. The entire Armory, profusely decorated, will be turned over to this festivity. Continuous music in the several halls from 7 P. M. to 12 M.

¶ Don't miss this great event. Nominal admission charge.

The President's Representative

WEDNESDAY, 3 P. M.
Municipal Auditorium—Third and Clay Sts.

MISS ALICE ROBERTSON, Congresswoman from Oklahoma, and the only woman Representative in our National Congress at Washington, will address the women of Oregon. Her subject will be "Woman's Opportunity in National Readjustment."

Miss Robertson has been delegated by President Harding to officially and personally represent him at our Rose Festival.

Many functions have been arranged for Miss Robertson, and she will be an honored guest at every festivity during the Rose Festival week.

The people of Portland and Oregon are appreciative of this personal representation of our President.



7460
PROF. H. E. K. WHITNEY
Director of Chorus

7461
BOBBY MURRAY

Page twenty-two

Whitney Boys' Chorus

Multnomah Field—Nineteenth and Morrison Streets

THREE PERFORMANCES

FRIDAY—8 P. M.
SATURDAY—8 P. M.
SUNDAY—3 P. M.

W. C. CULBERTSON
Director in Charge

PROFESSOR H. E. K. WHITNEY
Director of the Chorus



THE Whitney Boys' Chorus had the most remarkable growth of chorus singing in the annals of musical history. From two boys who met for rehearsal in February, 1915, in Spokane, it grew in one year to the largest, exclusively boys' chorus in the world, numbering over one thousand members. Its membership has continued to increase until it covers both Washington and Oregon.

The chorus first attracted national attention at the World's Fair in San Francisco. Since then they have been personally honored by two Presidents of the United States, several Senators, Congressmen, Governors and many other notables. The boys have traveled over 8000 miles by rail, and 6000 miles by automobile. They have sung to over 2,000,000 people and their picture has entered 3,000,000 homes.

The assembling of 2000 boys for three mammoth concerts in Multnomah Field, June 23, 24 and 25, makes a new record of world-wide significance. Master Bobbie Murray is the twelve-year-old boy from Tacoma, Wash., who went to New York and climbed a pinnacle of achievement never before attained by any musical artist in the world's history. Every few centuries some singer has appeared who has been able to produce a tone one complete octave above high C. Ellen Beach Yau is the most recent of these phenomena. Bobbie Murray is the first person to ever pass this stellar note of music. He not only passes, but produces a perfect tone fourteen notes (almost two complete octaves) above it. He sings phenomenally high and almost equally low. Commencing an octave below Middle C, he ascends the scale until he reaches six notes above the piano. He lacks only two notes of singing six complete octaves—a range never before dreamed of by mankind.

THE PROGRAM

Two thousand boys in white shirts, red ties and blue pants, banked many tiers into the air, will produce a spectacle of splendor seldom, if ever, surpassed. The harmonious blending of the high angelic sopranos, with the melodiously powerful altos, supported by a rich tenor and ponderous bass section, will render one of the most thrilling and spectacular program ever produced in America. This exceptional aggregation of boys' talent includes Scotch dancers, elocutionists, humorists, burlesque directors, instrumental and glee clubs.

Perhaps the most sensational moment of the evening will be when this mammoth chorus sings some of the stirring patriotic numbers, accompanied by spectacular and illustrative fireworks.

The music from the Flower of Oregon's Boyhood will enhance the fragrance of the roses which bloom in Portland.

Page twenty-three



. 7462

COMMUNITY TROPHY
PRESENTED BY
PORTLAND 1921 ROSE FESTIVAL
ASSOCIATION
TO
COMMUNITY AWARDED FIRST PRIZE
IN FLORAL PARADE
FOR
MOST BEAUTIFUL ENTRY
DECORATED BY THE RESIDENTS
TO BE COMPETED FOR
ANNUALLY